









## Express Fixed Front Conveyor



Model	Axle	Tyres	Front Conveyor Height
9,11,13 & 15m	Single	305/55 R22.5 355/50 R22.5	860mm (2' 10")
9,11,13 & 15m	Single	385/55 R22.5	930mm (3' 2")
16 & 19m	Single	435/50 R19.5	870mm (2' 11")
16 & 19m	Single	18 R22.5	1080mm (3' 7")
16,19,22 & 25m	Tandem Sprung	385/55 R22.5 435/50 R19.5	970mm (3' 3")

All conveyor height measurements taken from the ground to the top of the conveyor web.

## Mineral Chute

An optional low level mineral chute is available for the safe and easy introduction of low volume ingredients into the tub.



## Axle Risers



*15m<sup>3</sup> Popular with  
Super Single Tyre &  
Axle Riser Blocks*



Axle risers and super single tyres can be fitted when a higher discharge height is required.



*Standard  
Electric  
Control*

*Electric Control  
with Conveyor  
Speed Adjustment*

## Direct Tractor, Manual or Electric Controls

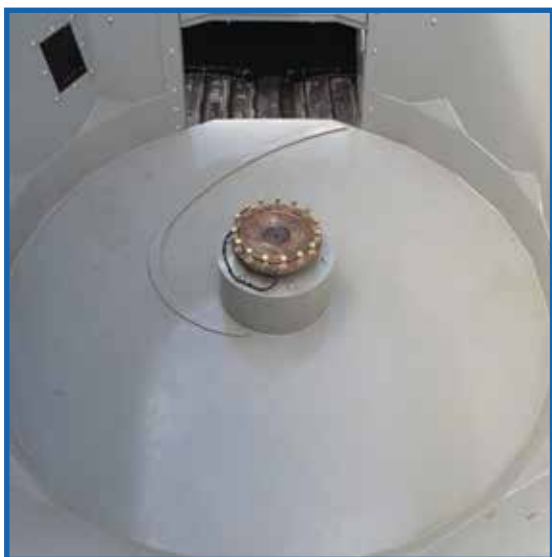
The simplest way of operating the Powermix's hydraulic functions is to connect each function directly to a spool valve on the tractor. This is easy on Popular models where only 1 or 2 functions are necessary.

The Express conveyor system requires 3 tractor hydraulic outlets, if these are not available then one of the following options must be used. The manual control option uses a lever operated valve block mounted on an adjustable arm fitted to the top link mounting point on the tractor or the front of the mixer.

The most convenient way of operating the hydraulic functions is to use the electric control option, here the operator controls the mixer using switches mounted in a hand-held joystick.

Electronic controls are also now available with the addition of conveyor speed adjustment.

## Gearbox Drive System



The heavy duty planetary gearbox is mounted within a sub-frame which also links the load cells to the tub, this provides exceptional strength as the tub floor is not relied upon for structural purposes. The gearbox sits within a fully welded and sealed chamber within the tub base. The gearbox top bearings can be externally greased.

---

**Shelbourne Reynolds Engineering Ltd.** Shepherds Grove, Stanton,  
Bury St. Edmunds, Suffolk IP31 2AR T: 01359 250415 F: 01359 250464

[www.shelbourne.com](http://www.shelbourne.com)