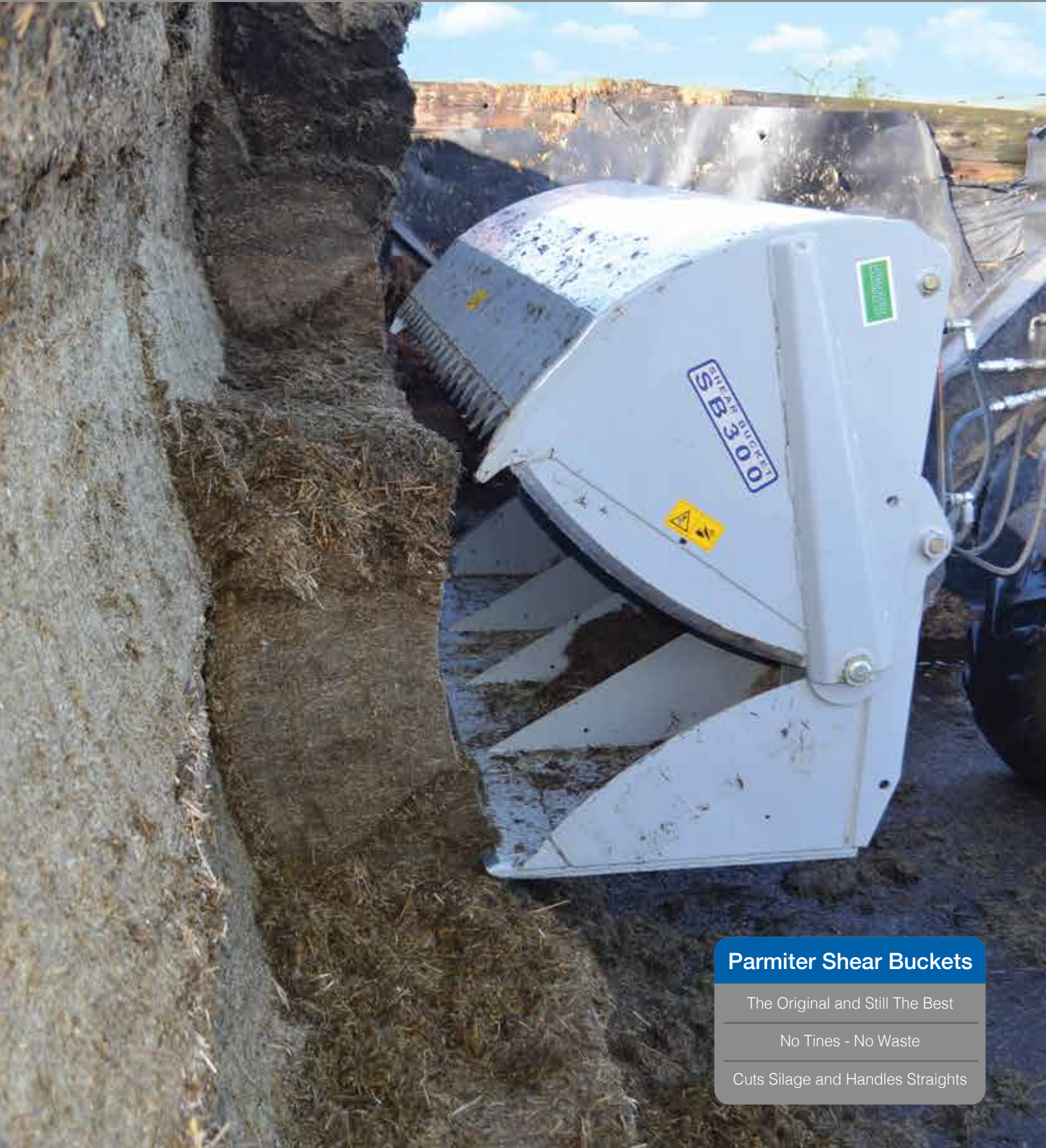


Shelbourne

REYNOLDS



Parmiter Shear Buckets

The Original and Still The Best

No Tines - No Waste

Cuts Silage and Handles Straights

Shelbourne

Parmiter Shear Buckets



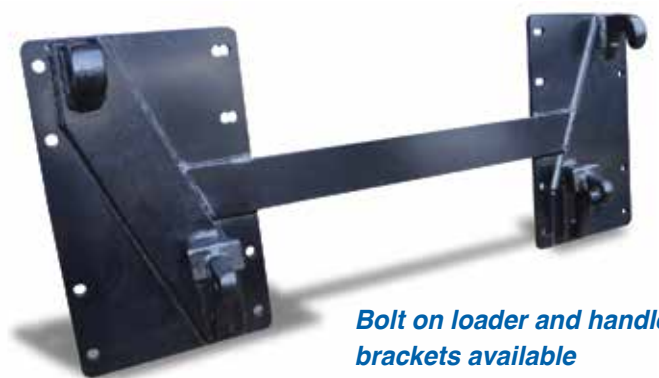
The Parmiter Shear Bucket is the most versatile machine that you will ever own!

It has the unique ability to neatly cut silage blocks leaving a sealed face yet retains the versatile characteristics of a normal bucket for handling loose feedstuffs.

All of these functions and operations are possible with no adjustments and without leaving the seat of the tractor.

The Parmiter Shear Bucket effectively replaces both a conventional silage grab and bucket with one machine. Heavy duty hydraulic cylinders power the front blade and two side blades down through the silage, while the bucket complete with bladed edges holds the block stable.

There is only one moving part so wear and adjustment is minimised. Four greasing points reduce maintenance to a minimum. Rugged construction and simple design including wear strips on the underside of the bucket ensure a reliable durable machine.



Bolt on loader and handler brackets available

The Parmiter Shear Bucket is the most v



versatile machine that you will ever own.

Shelbourne

Parmiter Shear Buckets

Technical Data

Shear Bucket SB300



Model	Unladen Weight	Width	Depth	Height	Opening Height	Capacity	Volume	Oil Flow	Min Oil Pressure
SB250	680 kg	1.844 m	1.045 m	0.975 m	0.845 m	664 kg	1.08 m ³	40 l/min	140-210 bar
SB300	760 kg	2.163 m	1.045 m	0.975 m	0.845 m	787 kg	1.28 m ³	40 l/min	140-210 bar
SB400	1835 kg	2.578 m	1.353 m	1.020 m	1.22 m	1230 kg	2.0 m ³	40 l/min	140-210 bar

NOTE: Capacity and volume is based on silage 615kilos/m 30% dry volume.

Shelbourne Reynolds Engineering Ltd. Shepherds Grove, Stanton,
Bury St. Edmunds, Suffolk, IP31 2AR **T:** 01359 250415 **F:** 01359 250464

www.shelbourne.com