

# ***Shelbourne Header***

## ***Rsd 18***

**PARTS MANUAL**  
**2009 AND ONWARDS**



**Shelbourne Reynolds Inc.**  
**Colby PO box 607**  
**1250 S Country Club Drive**  
**Colby , Kansas 67701**  
**U.S.A.**

**Telephone: (785) 462 6299**  
**Fax: (785) 462 6761**

**Shelbourne Reynolds Engineering Ltd**  
**Stanton**  
**Bury St Edmunds**  
**Suffolk IP31 2AR**  
**England**

**Telephone: (01359) 250415**  
**Fax: (01359) 250464**

**(Stores direct (01359) 251231)**  
**(Stores direct (01359) 252031)**

**ISSUE...3**  
**18.11.2011**

visit our website [www.shelbourne.com](http://www.shelbourne.com)

## SHELBOURNE HEADER PARTS MANUAL

### MACHINE IDENTIFICATION

Your Shelbourne Header is designed to fit many different types of combine

For this reason the machine number index is broken down into sections for identification. Your serial and machine numbers are listed below:

**SHELBOURNE HEADER SERIAL NUMBER**

\_\_\_\_\_

**SHELBOURNE HEADER MACHINE NUMBER**

\_\_\_\_\_

**ADAPTOR PLATE ASSEMBLY**

\_\_\_\_\_

**DRIVE KIT**

\_\_\_\_\_

**HYDRAULIC FITTING KIT**

\_\_\_\_\_

KIT OPTION	KIT OPTION	KIT OPTION
KIT OPTION	KIT OPTION	KIT OPTION
KIT OPTION	KIT OPTION	KIT OPTION

### ORDERING SPARE PARTS

To ensure that you order the correct part from your SRE dealer please use the following procedure.

#### **ALWAYS QUOTE THE MACHINE AND SERIAL NUMBERS WHEN ORDERING.**

Refer to the front page of this parts list section (machine assemblies), listing all the sub assemblies.

Use the following sub assembly numbers and descriptions to find the area of the machine that your part is required, i.e. if you need a part which is fitted to the auger, your part will be in the auger sub assembly parts list.

Having decided which sub-assembly your part should be under, use the number beside that sub-assembly description which will begin with 1960-- -- to find the parts listing of the sub-assembly further on in the manual. The number will be printed in the top left-hand corner; the sub-assemblies are in numerical order.

Having found the correct parts list, you will find the corresponding drawing by either looking at the facing page or progressing through the manual to the next drawing.

The drawings indicate the components by item numbers, which you will find, are repeated in the left-hand side of your parts listing, and therefore referring to the correct part.

**LIST OF KIT NUMBERS**  
**FOR 18 Rsd MACHINES**

**Rsd 18 HEADER**

1. 196567 09	Rsd 18 Shelbourne Header
2. 196143 36	Header Lights Sub
3. 196173 01	Stripping Rotor Assembly (RH) 2.4m
4. 196192 16	Auger Mounting (welded paddle) Sub Assembly
5. 196193 09	Hydraulic Circuit Sub
6. 196194 29	Top Door Cowl Assembly
7. 196195 39	Adjustable Crop Deflector Sub Assembly
8. 196198 02	Divider Sub Assembly (2009 & on)
9. 196228 02	Stripping Rotor Assembly (LH) 3.0m
10. 196247 09	Bolt On Paddle Auger Assembly 5.4m
11. 196248 19	Frame And Parts Sub
12. 196249 02	Emblems And Guards Sub (2009 & on)
13. 196250 01	Input/Drive Mounting Sub Assy Upto Rsd24
14. 196252 02	Rotor Mounting Sub
15. GEA-0057	Input Rsd Gear Dropbox Assembly
16. KIT-00121	Auger Drive Sprocket/8 Spring Splined Clutch Assembly
17. KIT-00976	Ball Joint Coupling
18. KIT-01310	Universal Belly/Wear Plate Kit
19. KIT-01336	Spare Pulley Mounting Bracket Kit
20. KIT-01394	CE Area Kit
21. RDS-0002	Tacho Kit (2009 Only)
22. RDS-0003	Tacho Kit (2010 & On)
23. RDS-0005	Tacho Kit (2009 Only)
24. RDS-0007	Tacho Kit (2010 & On)

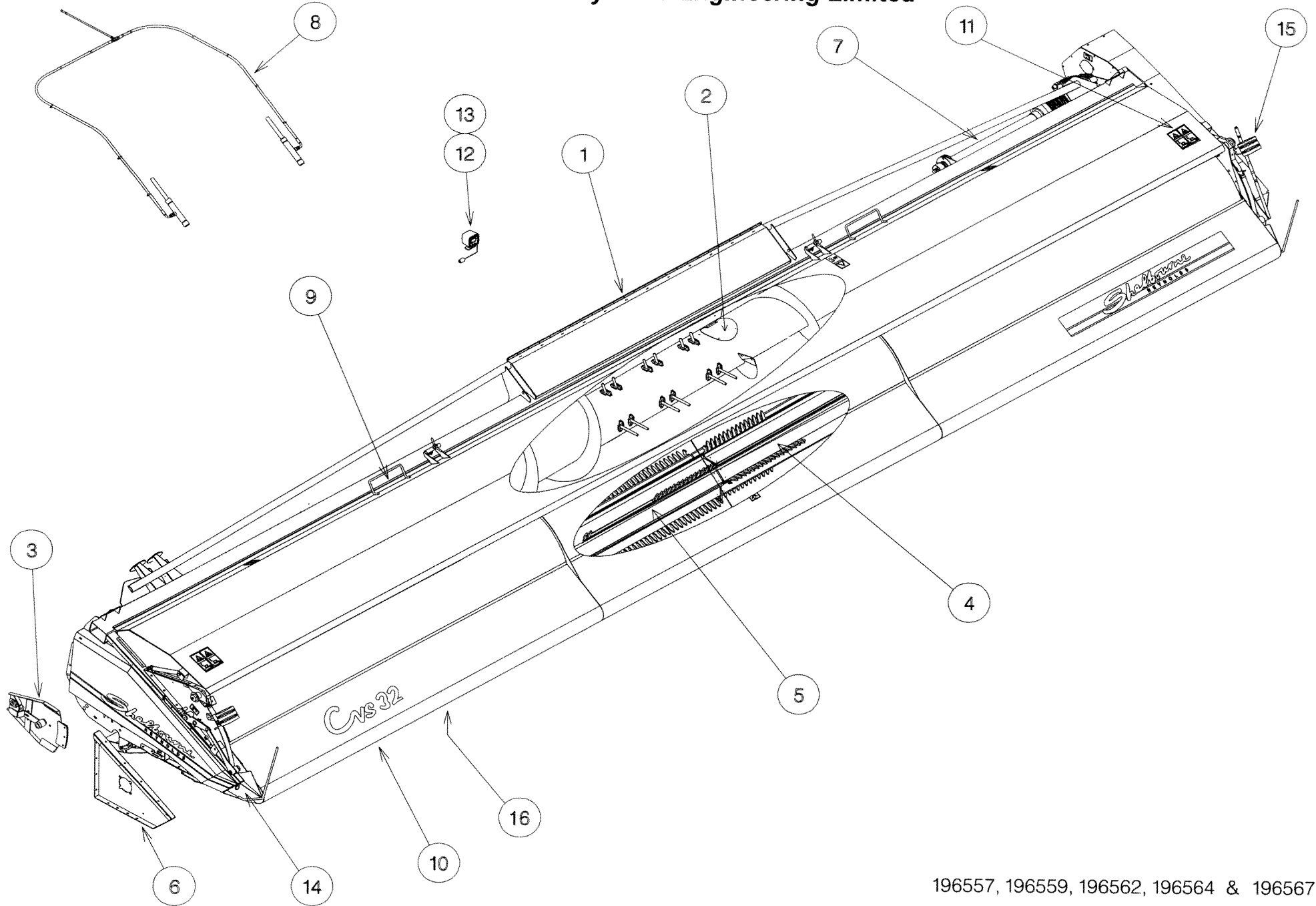
**KIT OPTION**

25 KIT-01340	Steel Skid Cover Kit (hardox)
26 KIT-01382	1.2m Spill Plate Extension Kit (Rsd 2009)
27 KIT-01383	0.6m Spill Plate Extension Kit (Rsd 2009)
28 KIT-01384	Anti-Wrap Plate Kit

## Shelbourne Reynolds Engineering Limited

ASSY NUMBER: 196567 09				ASSY DESCRIPTION: Rsd18 SHELBOURNE HEADER			
ITEM	PART NO	DESCRIPTION	QTY	ITEM	PART NO	DESCRIPTION	QTY
1	196248 19	FRAME & PARTS SUB	1				
2	196247 09	PADDLE AUGER ASSY	1				
3	196192 16	AUGER MTG SUB ASSY	1				
4	196228 02	STRIPPING ROTOR ASSY LH 3.0m	1				
5	196173 01	STRIPPING ROTOR ASSY RH 2.4m	1				
6	196252 02	ROTOR MTG SUB ASSY	1				
7	196250 01	INPUT/DRIVE MTG SUB ASSY	1				
8	196193 09	HYDRAULICS	1				
9	196194 29	TOP DOOR COWL SUB ASSY	1				
10	196195 39	ADJ. CROP DEFLECTOR SUB	1				
11	196249 02	EMBLEMS & GUARDS	1				
12	RDS-0007	HEADER MON' KIT (2010 & ON)	1				
OR	RSD-0005	HEADER MON' KIT (2009 ONLY)	1				
13	RDS-0003	COMBINE MON' KIT (2010 & ON) RSDPACK2	1				
OR	RSD-0002	COMBINE MON' KIT (2009 ONLY) RSDPACK2	1				
14	196198 02	DIVIDER SUB RSDPACK2	1				
15	196143 36	HEADER LIGHTS SUB (USA ONLY)	1				
16	KIT-01310	UNIVERSAL BELLY/WEAR KIT	1				

**Shelbourne Reynolds Engineering Limited**

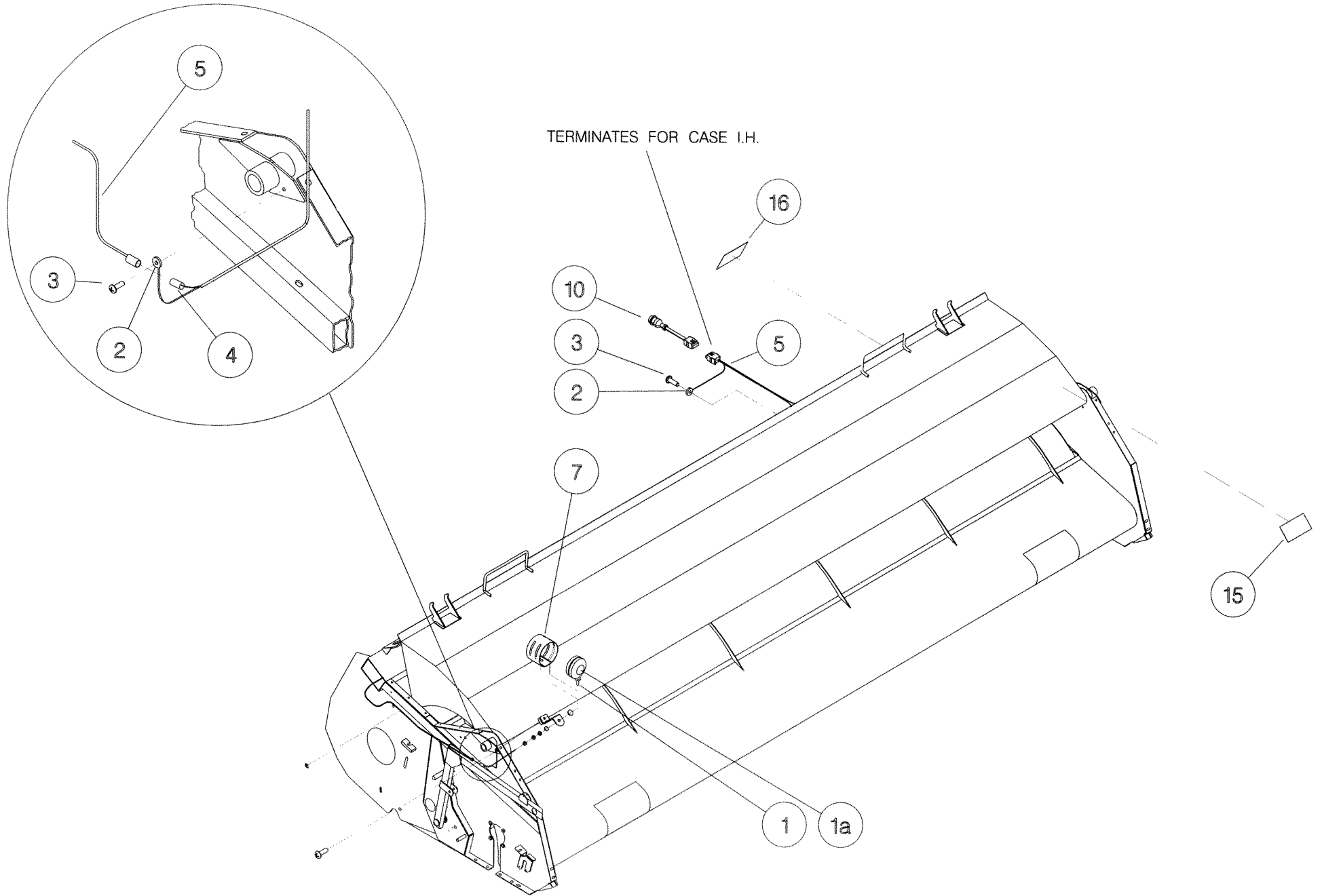


196557, 196559, 196562, 196564 & 196567

## Shelbourne Reynolds Engineering Limited

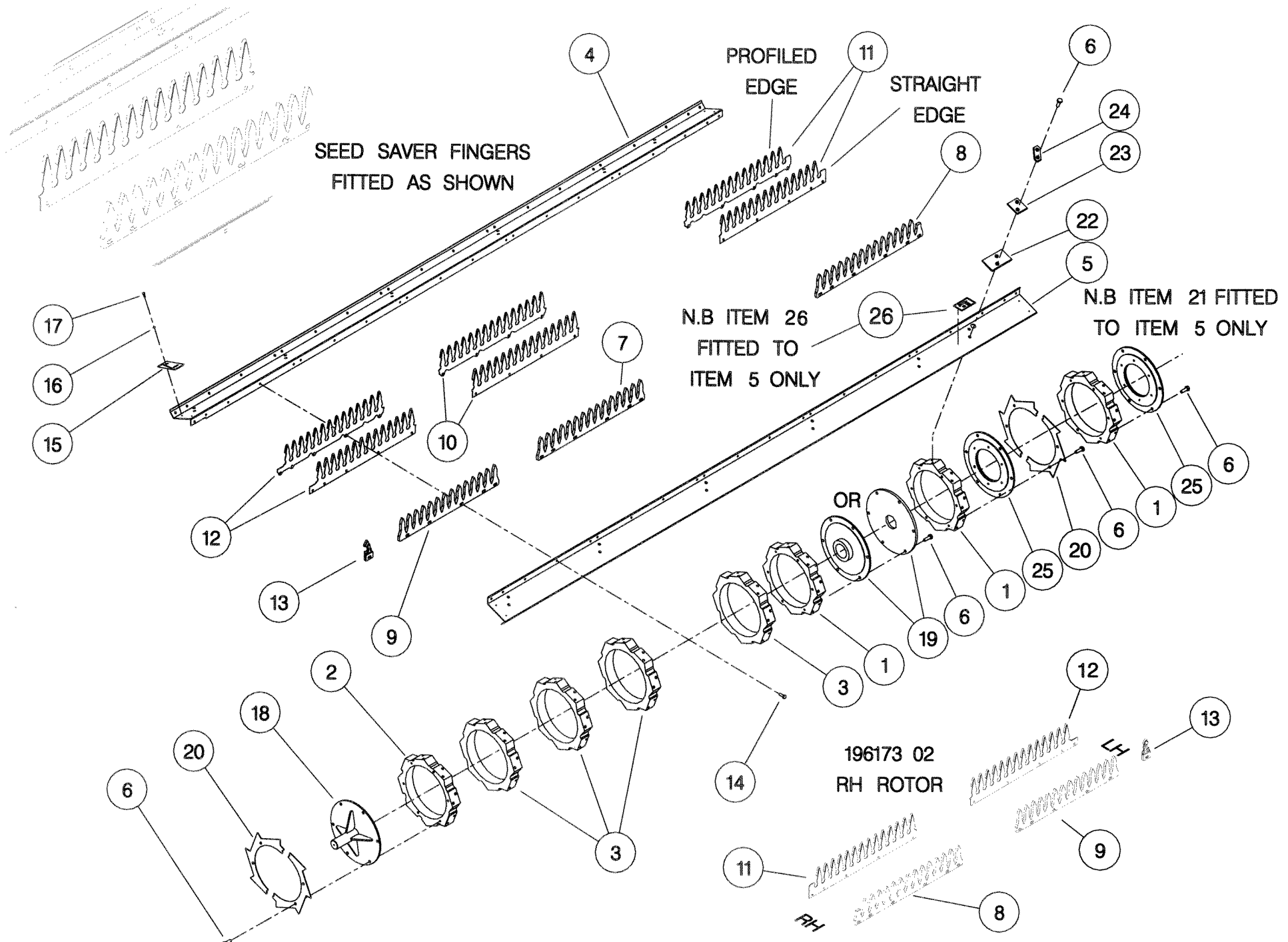
ASSY NUMBER: 196143 36				ASSY DESCRIPTION: HEADER LIGHTS SUB Cvs32 & DOWN			
ITEM	PART NO	DESCRIPTION	QTY	ITEM	PART NO	DESCRIPTION	QTY
1	LMP-10504	INDICATOR LAMP(GROTE) (2012 &ON)	2				
1a	BLB-0075	BULB					
1b	LMP-10006	SPARE LENS (GROTE)					
OR	LMP-10501	INDICATOR LAMP(PMG) (UPTO 2012)	2				
1a	BLB-0075	BULB	2				
1b	LMP-10000	SPARE LENS FRONT (PMG)					
1c	LMP-10001	SPARE LENS REAR (PMG)					
2	ETM-00440	LOOP TERMINAL	2				
3	SCW-5180	SELF TAP SCREW	3				
4	ETM-00560	MALE BULLET TERMINAL	2				
5	194530 01	WIRE LOOM & PLUG ASSY	1				
6	WSH-0025	PLAIN WASHER	2				
7	193567 01	INDICATOR GUARD	2				
8	WSH-0018	PLAIN WASHER	2				
9							
10	193516 01	LIGHT PLUG ASSY(JD PRE 50 5ER)	1				
OR	195207 01	LIGHT PLUG ASSY(JD 50 SERIES)	1				
OR	SEE HYD KIT	LIGHT PLUG ASSY(JD 60&70 SER)	1				
OR	197040 01	LIGHT PLUG ASSY (CASE IH 8010)	1				
OR	197147 01	LIGHT PLUG ASSY (NH CX/CR)	1				
OR	198732 01	LIGHT PLUG ASSY (NH TR)	1				
OR	SEE HYD KIT	LIGHT PLUG ASSY (AGCO MULTI)	1				
11							
12							
13							
14							
15	TPE-00250	REFLECTIVE TAPE - YELLOW	0.1				
15	TPE-00250	REFLECTIVE TAPE - YELLOW	0.1				
16	TPE-00251	REFLECTIVE TAPE - RED	0.1				
16	TPE-00251	REFLECTIVE TAPE - RED	0.1				

**Shelbourne Reynolds Engineering Limited**



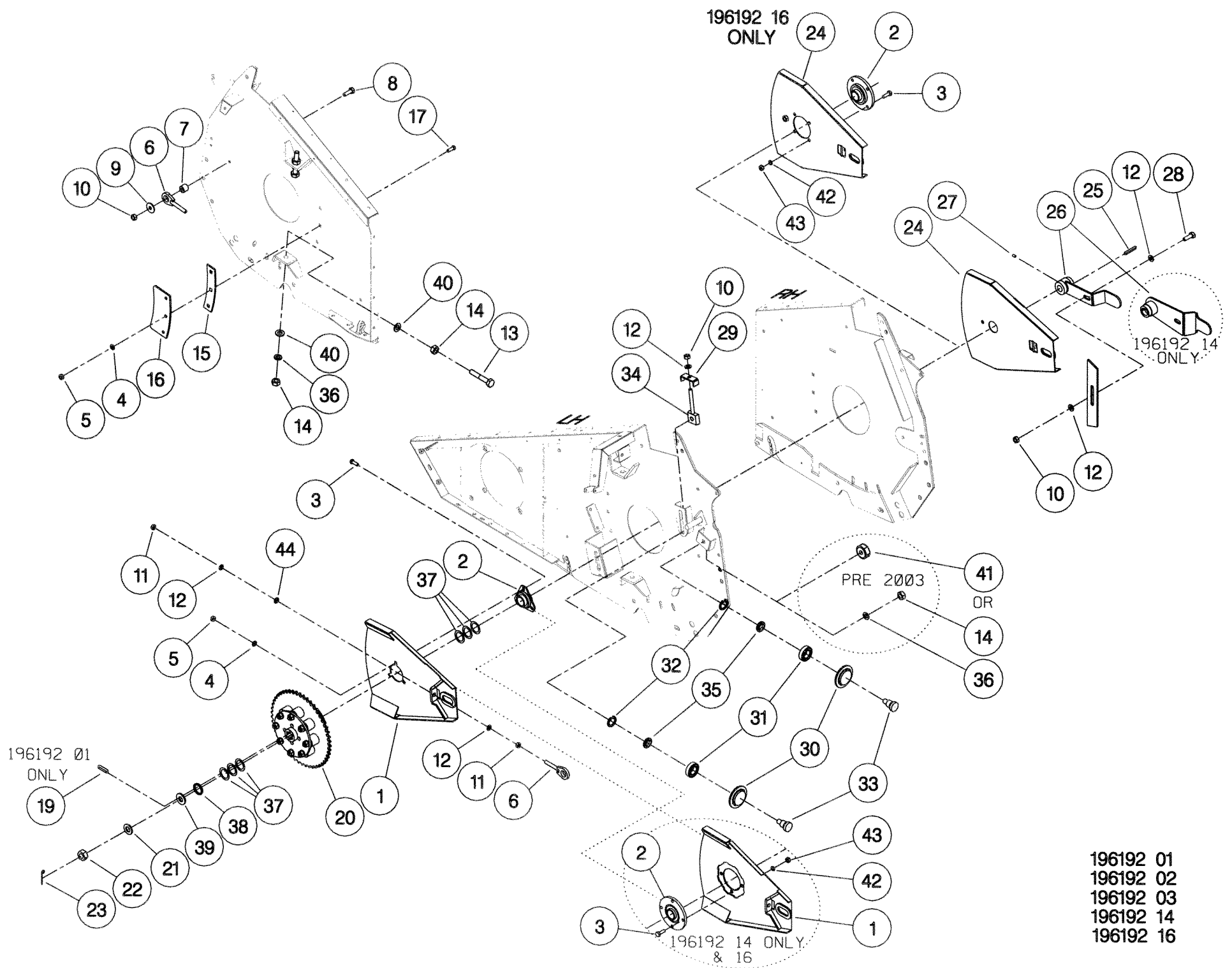
**Shelbourne Reynolds Engineering Limited**

ASSY NUMBER:		196173 01		ASSY DESCRIPTION:STRIPPING ROTOR ASSY (R/H) 2.4m				
ITEM	PART NO	DESCRIPTION	QTY	ITEM	PART NO	DESCRIPTION	QTY	
1	192892 01	OUTER HUB CASTING L.H.	1					
2	192892 02	OUTER HUB CASTING R.H.	1					
3	192892 03	INNER HUB CASTING	3					
4	192890 01	ROTOR SECTION 2.4M	7					
5	193117 01	ROTOR SECTION 2.4M(HOLE)	1					
6	HSSG10204	SET SCREW	96					
7	193558 01	STANDARD ELEMENT	16					
8	193558 02	END HOLE ELEMENT	8					
9	193558 03	CENTRE END HOLE ELEMENT	8					
10	197717 01	SEED SAVER CTR. (PROFILED EDGE)	16			<b>NOTE.</b> <b>ITEMS 10, 11 &amp; 12.</b> <b>BOTH TYPES OF SEED SAVERS ARE</b> <b>INTERCHAGEABLE BUT FOR BALANCE</b> <b>REASONS IF MIXING TYPES ON A</b> <b>ROTOR FIT AS OPPOSITE PAIRS</b>		
OR	193780 01	SEED SAVER CTR. (STRAIGHT EDGE)	16					
11	197719 02	SEED SAVER RH END (PROFILED EDGE)	8					
OR	193782 02	SEED SAVER RH END (STRAIGHT EDGE)	8					
12	197718 01	SEED SAVER RH CTR (PROFILED EDGE)	8					
OR	193781 01	RH CTR STEEL FINGER (STRAIGHT EDGE)	8					
13	194109 02	CTR FINGER RH	8				<b>NOTE.</b> <b>ITEMS 11 AND 12 ARE CORRECT</b> <b>PARTS WHEN FINGERS SET WITH</b> <b>FLANGES UP -IE. AGGRESSIVE.</b> <b>SEE LH ROTOR ASSY PARTS WHEN</b> <b>FLANGES ARE REQUIRED DOWN.</b>	
14	HSSF08174	SET SCREW	144					
15	192679 01	ANTI WRAP PLATE	8					
16	WSH-1034	PENNY WASHER	16					
17	SCW-5180	SELF TAP.SCREW	16					
18	192899 01	IDLE SHAFT W/A	1					
19	KIT-00976	BALL COUPLING KIT	1					
20	192959 01	OUTER CLAMP RING	4					
21	BPG-00200	BODY PLUG	1					
22	193118 01	BALANCE WEIGHT	6					
23	193118 02	BALANCE WEIGHT	2					
24	193382 01	BALANCE WEIGHT	1					



**Shelbourne Reynolds Engineering Limited**

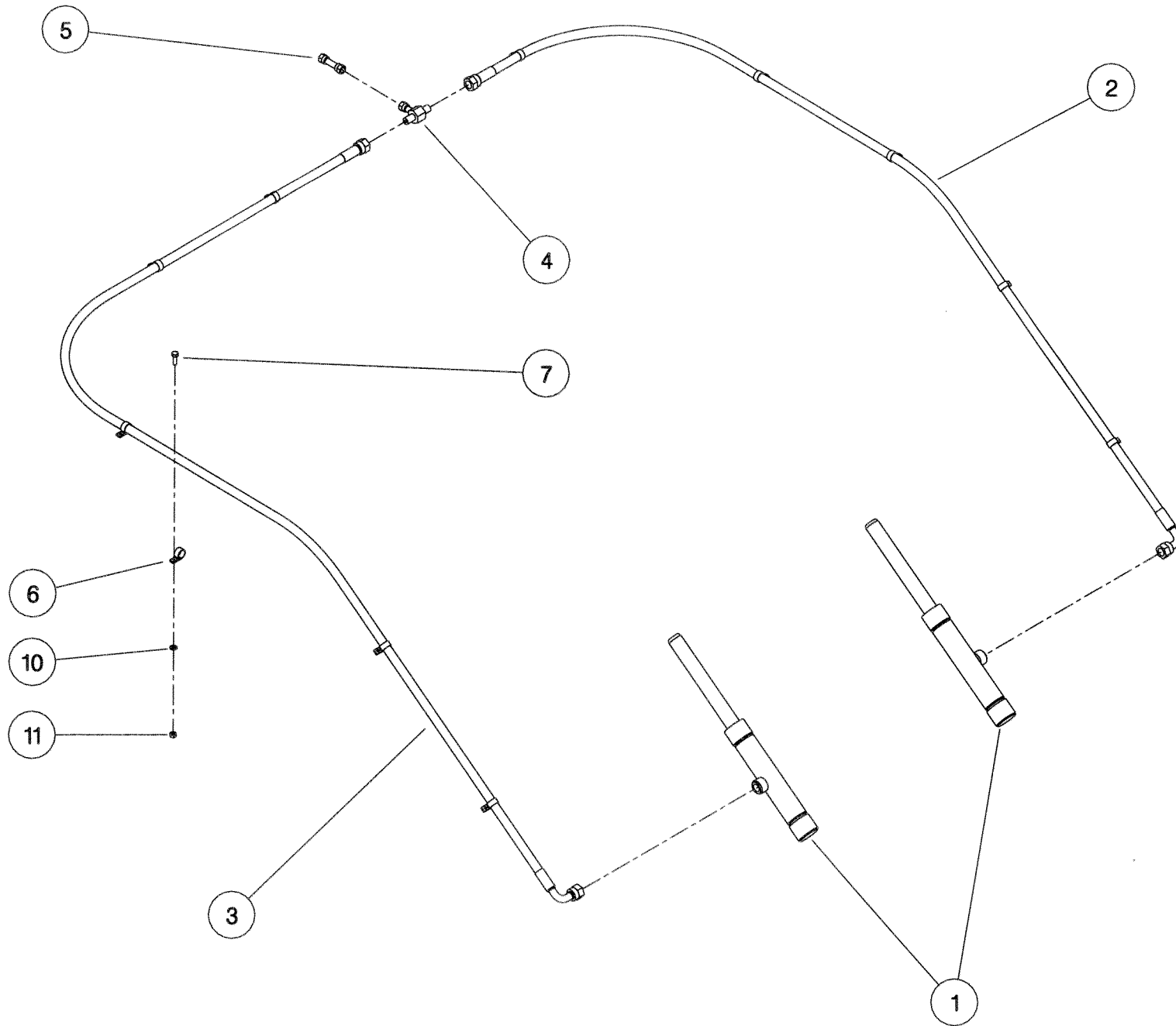
ASSY NUMBER: 196192 16		ASSY DESCRIPTION: AUGER MTG(WELDED PADDLE) SUB ASSY					
ITEM	PART NO	DESCRIPTION	QTY	ITEM	PART NO	DESCRIPTION	QTY
1	197342 01	ADJUSTER PLATE LH	1	38	190119 82	WASHER	1
2	BRG-23560	BEARING	2	39	190119 47	WASHER	1
3	HSS-0191	SETSCREW	8	40	WSH-0024	PLAIN WASHER	8
4	WSH-0015	PLAIN WASHER	6	41			
5	NUT-0265	NYLOC NUT	6	42	WSH-0061	SPRING WASHER	8
6	200405 01	ADJUSTER	2	43	NUT-0167	NUT	8
7	200499 01	SPACER	2	44	WSH-0065	SPRING WASHER	2
8	BLTA12350	BOLT	2				
9	190119 26	WASHER	2				
10	NUT-0269	NYLOC NUT	3				
11	NUT-0170	NUT	4				
12	WSH-0018	PLAIN WASHER	5				
13	HSS-0330	SET SCREW	4				
14	NUT-0180	PLAIN NUT	8				
15	200407 01	SUPPORT PLATE	2				
16	200408 01	OVERLAP PLATE	2				
17	BLT-3750	COACH BOLT	6				
18							
19							
20	KIT-00121	AUGER SLIP CLUTCH (SEE PARTS LIST KIT-00121)	1				
21	WSH-0030	PLAIN WASHER	1				
22	NUT-0580	CASTLE NUT	1				
23	PIN-1150	SPLIT PIN	1				
24	197711 01	ADJUSTER PLATE RH	1				
25							
26							
27							
28							
29							
30	131041 01	SPROCKET IDLER	2				
31	BRG-1995	BEARING	2				
32	CIR-0470	CIRCLIP	2				
33	190060 06	IDLER SPINDLE	2				
34	191777 01	IDLER ADJ.SCREW	1				
35	191040 01	IDLER SPACER	2				
36	WSH-0070	SPRING WASHER	4				
37	190119 95	WASHER	6				



- 196192 01
- 196192 02
- 196192 03
- 196192 14
- 196192 16

**Shelbourne Reynolds Engineering Limited**

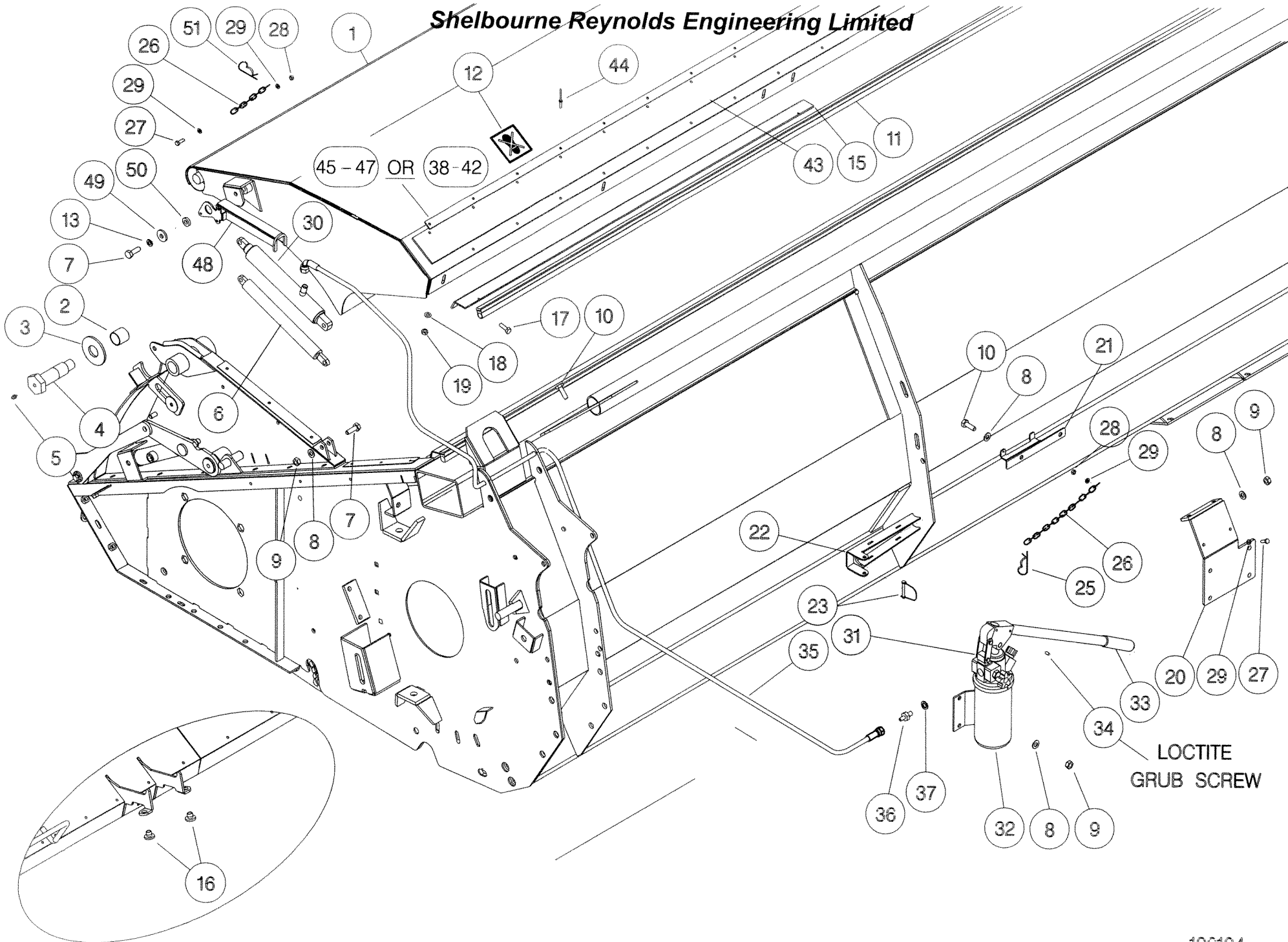
ASSY NUMBER: 196193 09		ASSY DESCRIPTION: HYDRAULIC CIRCUIT SUB Cvs18					
ITEM	PART NO	DESCRIPTION	QTY	ITEM	PART NO	DESCRIPTION	QTY
1	REF	HYDRAULIC RAM	2				
2	HHBC26510	HYDRAULIC HOSE LH	1				
3	HHBC52610	HYDRAULIC HOSE RH	1				
4	HPPD07100	HYD.TEE FITTING	1				
5	FIT-0213	HYD.BULKHEAD FITT	1				
6	CLP-01012	P CLIP	8				
7	SCW-4960	BUTT.SCK.HD SCREW	4				
8							
9							
10	WSH-0009	PLAIN WASHER	4				
11	NUT-0260	NYLOC NUT	4				



## Shelbourne Reynolds Engineering Limited

ASSY NUMBER: 196194 29				ASSY DESCRIPTION: TOP DOOR COWL ASSY 5.4(18')Rvs			
ITEM	PART NO	DESCRIPTION	QTY	ITEM	PART NO	DESCRIPTION	QTY
1	197307 24	COWL ASSY (2010 & ON)	1	35	HHCC11505	HYD HOSE ASSY (2007 & ON)	1
OR	197307 21	COWL ASSY(2005-2009)	1	36	HAPAA0305	HYD REST (2007&ON)	1
OR	194999 21	COWL ASSY (UPTO 2004)	1	37	WSH-1010	DOWTY WASHER (2007 & ON)	1
2	BSHK03056	BUSH	2	38	197615 06	CLAMP STRIP END (2007-2009)	2
3	192813 01	LARGE WASHER	2	39	197615 10	CLAMP STRIP HANDLE (2007-2009)	2
4	192812 01	HOOD PIVOT PIN	2	40	197615 11	CLAMP STRIP INNER (2007-2009)	2
5	NIP-0001	GREASE ZERK (UPTO 2009)	2	41	197615 13	CLAMP STRIP SMALL (2007-2009)	2
6	GSTA14404	GAS STRUTT (UPTO 2007)	2	42	197615 08	CLAMP STRIP CENTRE (2007-2009)	2
7	BLTA10350	BOLT (2010 & ON)	1	43	198066 03	SEALING STRIP 18' (2010 & ON)	1
OR	BLTA10290	BOLT (UPTO 2009)	2	OR	197602 01	SEALING STRIP 18' (2007-2009)	1
8	WSH-0015	PLAIN WASHER (2007 & ON)	14	44	POP-0006	POP RIVET (2010 & ON)	28
OR	WSH-0015	PLAIN WASHER (UPTO 2007)	2	OR	POP-0006	POP RIVET (2007-2009)	48
9	NUT-0265	NYLOC NUT (2007 & ON)	8	45	198067 04	CLAMP STRIP (704mm) (2010 & ON)	1
OR	NUT-0265	NYLOC NUT (UPTO 2007)	2	46	198067 02	CLAMP STRIP (1194mm) (2010& ON)	3
10	HSS-0194	SET SCREW (2007 & ON)	6	47	198067 03	CLAMP STRIP (1104mm) (2010& ON)	1
11	EDS-11660	SEAL STRIP (UPTO 2007)	1	48	198311 01	RAM STOP (2010 & ON)	1
12	192718 01	TRANSFER(NO STEP)	2	49	190119 75	WASHER (2010 & ON)	1
13	WSH-0061	SPRING WASHER	1	50	190119 79	WASHER (2010 & ON)	1
14	197289 01	SEAL CLAMP PLATE (UPTO 2007)	1				
15	197289 02	SEAL CLAMP PLATE (UPTO 2007)					
16	197810 01	BUMP STOP	4				
17	HSS-0140	SET SCREW (UPTO 2007)	14				
18	WSH-1038	WASHER (UPTO 2007)	14				
19	NUT-0263	NYLOC NUT (UPTO 2007)	14				
20	197607 01	HAND PUMP BRACKET (2007 & ON)	1				
21	197606 01	STORAGE BRACKET (2007 - 2009)	1				
22	197605 01	RAM STOP (2007 - 2009)	1				
23	PIN-1720	SPRING D PIN (2007 - 2009)	1				
24							
25	CLP-00103	R CLIP (2007 & ON)	1				
26	CHN-0145	CHAIN (2007 & ON)	0.17				
27	HSS-0086	SET SCREW (2007 & ON)	1				
28	NUT-0260	NYLOC NUT (2007 7 ON)	1				
29	WSH-0009	PLAIN WASHER (2007 & ON)	2				
30	197601 01	HYDRAULIC CYLINDER (2007 & ON)	1				
30a	RMSK00030	RAM SEAL KIT					
31	JAC-00226	HYD HAND PUMP (2007 & ON)	1				
32	JAC-00221	HYD RESEVOIR (2007 & ON)	1				
33	JAC-00230	JACK HANDLE (2007 & ON)	1				
34	SCW-4530	GRUBSCREW (2007 & ON)	1				

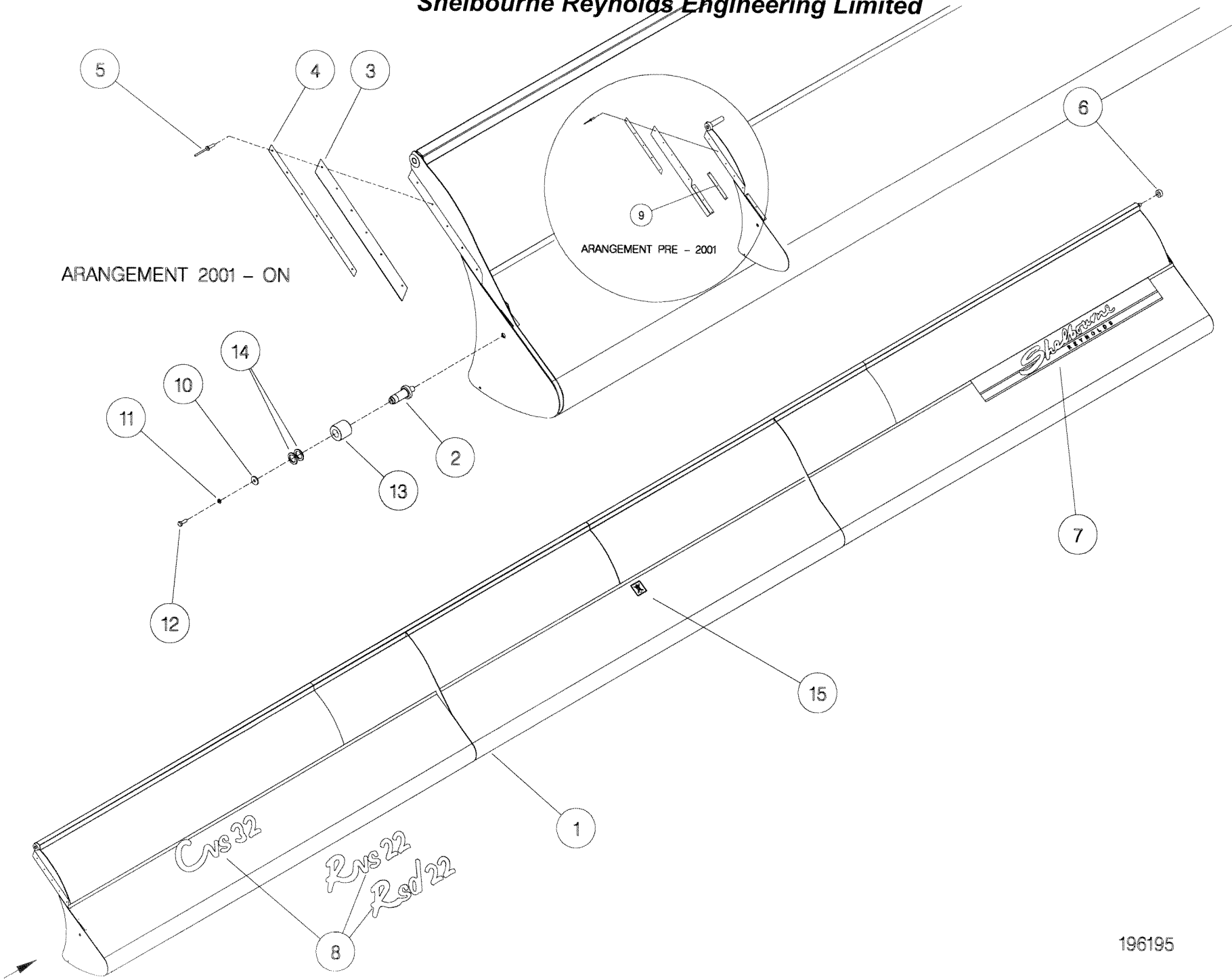
**Shelbourne Reynolds Engineering Limited**



## Shelbourne Reynolds Engineering Limited

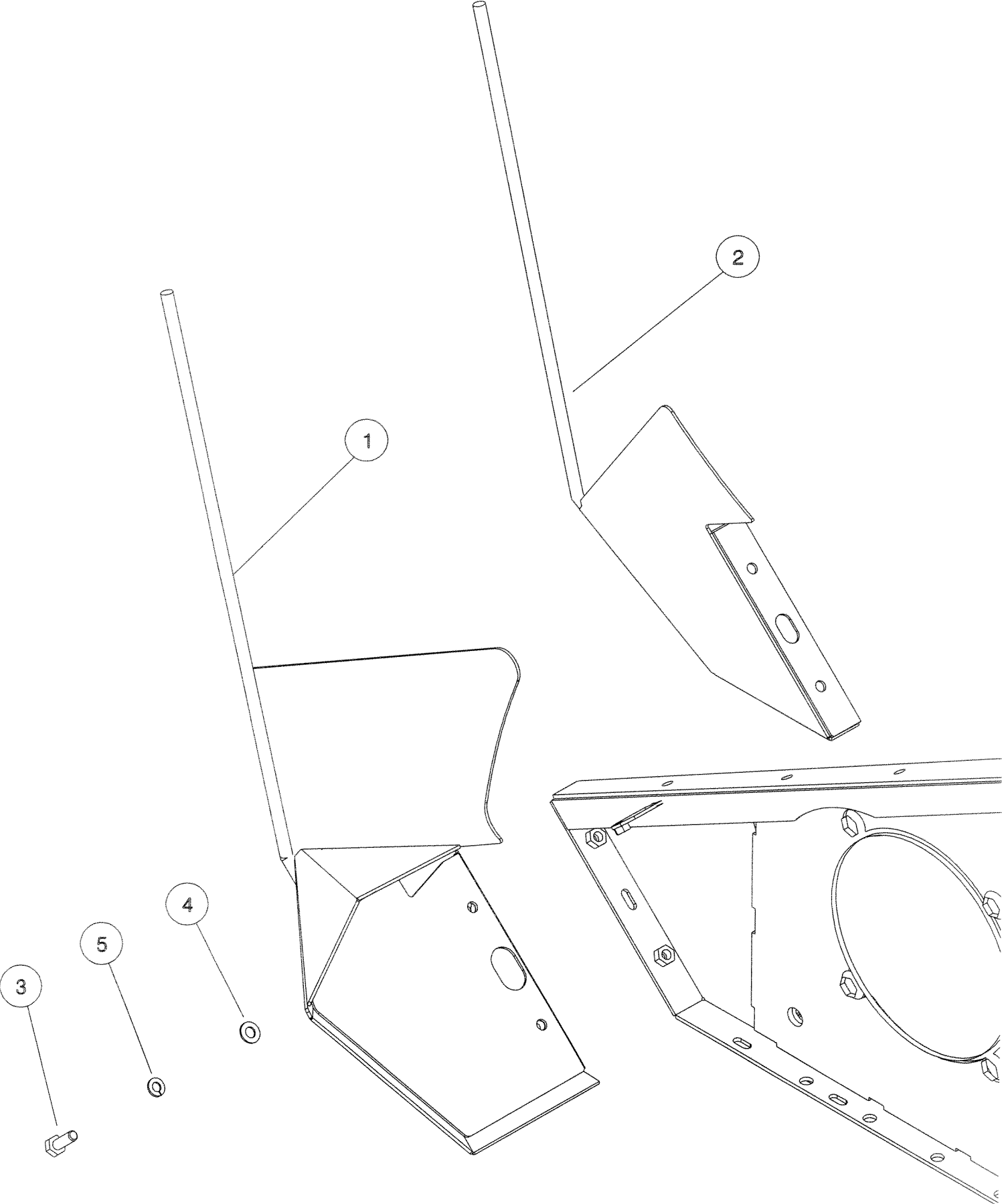
ASSY NUMBER: 196195 39				ASSY DESCRIPTION: ADJ. CROP DEFLECTOR SUB			
ITEM	PART NO	DESCRIPTION	QTY	ITEM	PART NO	DESCRIPTION	QTY
1	194902 15	ADJ CROP DEFLECTOR	1				
2	195379 01	SPINDLE	2				
3	195432 01	SEAL STRIP	2				
4	195433 01	CLAMP STRIP	2				
5	POP-0006	POP RIVET	12				
6	191642 01	NYLON ROLLER	2				
7	198763 01	EMBLEM	1				
8	199016 01	EMBLEM (RSD18) WHITE	1				
OR	197136 01	EMBLEM (RSD18) RED	1				
10	190119 08	WASHER	2				
11	WSH-0058	SPRING WASHER	2				
12	HSS-0140	SET SCREW	2				
13	192688 01	NYLON ROLLER	2				
14	190119 20	WASHER	2				
15	192718 01	TRANSFER	1				

**Shelbourne Reynolds Engineering Limited**



## Shelbourne Reynolds Engineering Limited

ASSY NUMBER: 196198 02				ASSY DESCRIPTION: DIVIDER SUB ASSY (PIVOTING GEARBOX)			
ITEM	PART NO	DESCRIPTION	QTY	ITEM	PART NO	DESCRIPTION	QTY
1	198314 01	DIVIDER W/A LH (2010 & ON)	1				
2	194501 02	DIVIDER ASSY RH	1				
3	HSS-0188	SETSCREW	4				
4	WSH-0015	PLAIN WASHER	4				
5	WSH-0061	SPRING WASHER	4				

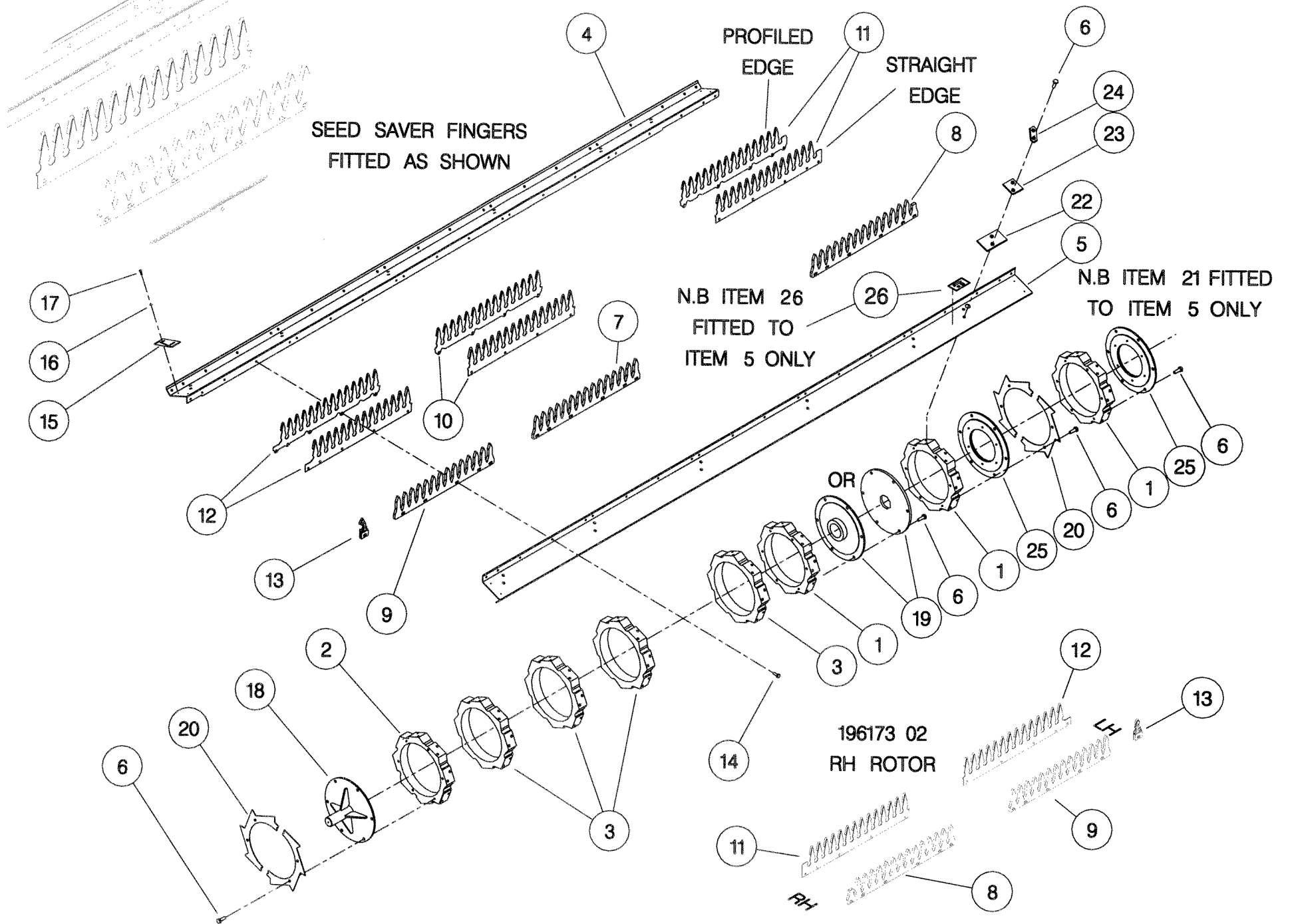


**Shelbourne Reynolds Engineering Limited**

ASSY NUMBER:		196228 02		ASSY DESCRIPTION:STRIPPING ROTOR ASSY (L/H) 3.0m			
ITEM	PART NO	DESCRIPTION	QTY	ITEM	PART NO	DESCRIPTION	QTY
1	192892 01	OUTER HUB CASTING L.H.	2				
2	192892 02	OUTER HUB CASTING R.H.	1				
3	192892 03	INNER HUB CASTING	4				
4	193883 02	ROTOR SECTION (2009 & ON ONLY)	8				
OR	193883 02	ROTOR SECTION (UP TO & INCLUDING 2008)	7				
5	193884 02	ROTOR SECTION (UP TO & INCLUDING 2008)	1				
6	HSSG10204	SET SCREW	130				
7	193558 01	STANDARD ELEMENT	24				
8	193558 02	END HOLE ELEMENT	8				
9	193558 03	CENTRE END HOLE ELEMENT	8				
10	197717 01	SEED SAVER CTR (PROFILED EDGE)	24				
OR	193780 01	SEED SAVER CTR (STRAIGHT EDGE)	24				
11	197719 01	SEED SAVER LH END (PROFILED EDGE)	8				
OR	193782 01	SEED SAVER LH END (STRAIGHT EDGE)	8				
12	197718 02	SEED SAVER LH CTR (PROFILED EDGE)	8				
OR	193781 02	SEED SAVER LH CTR (STRAIGHT EDGE)	8				
13	194109 01	CTR FINGER LH	8				
14	HSSF08174	SET SCREW	176				
15	192679 01	ANTI WRAP PLATE	8				
16	WSH-1034	PENNY WASHER	16				
17	SCW-5180	SELF TAP.SCREW	16				
18	193103 01	CENTRE SHAFT W/A	1				
19	198117 01	ROTOR DRIVE DISC	1				
20	192959 01	OUTER CLAMP RING	4				
21	BPG-00200	BODY PLUG (UP TO & INCLUDING 2008)	1				
22	193118 01	BALANCE WEIGHT	6				
23	193118 02	BALANCE WEIGHT	2				
24	193382 01	BALANCE WEIGHT	1				
25	197111 01	ROTOR DRIVE DISC	1				

**NOTE.**  
**ITEMS 10, 11 AND 12.**  
**BOTH TYPES OF SEED SAVER ARE**  
**INTERCHANGEABLE BUT FOR BALANCE**  
**REASONS IF MIXING TYPES ON A**  
**ROTOR FIT AS OPPOSITE PAIRS.**

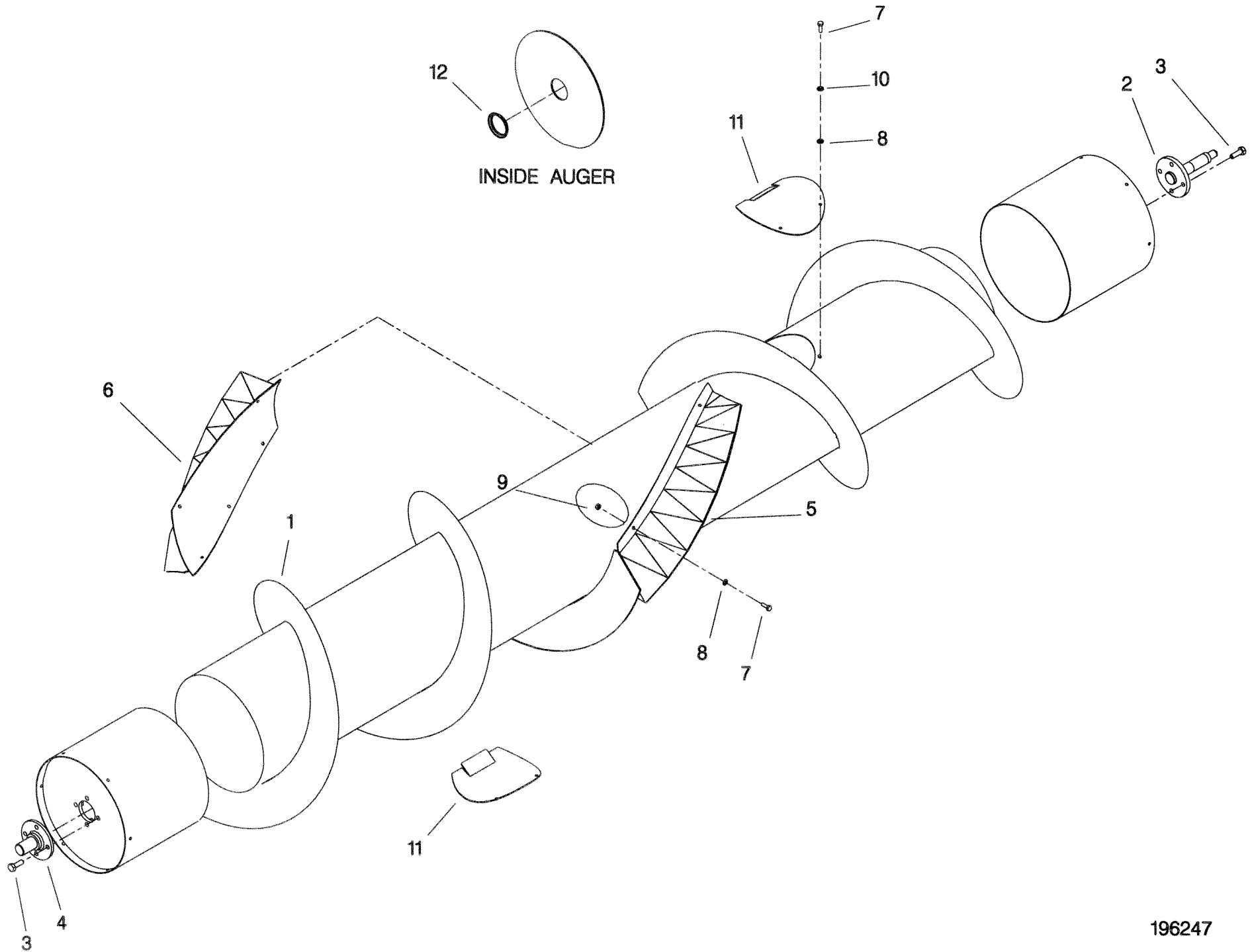
**NOTE.**  
**ITEMS 11 AND 12 ARE CORRECT**  
**PARTS WHEN FINGERS SET WITH**  
**FLANGES UP - IE. AGGRESSIVE.**  
**SEE RH ROTOR ASSY PARTS WHEN**  
**FLANGES ARE REQUIRED DOWN.**



3.0m LH ROTOR ILLUSTRATED 196174 02

**Shelbourne Reynolds Engineering Limited**

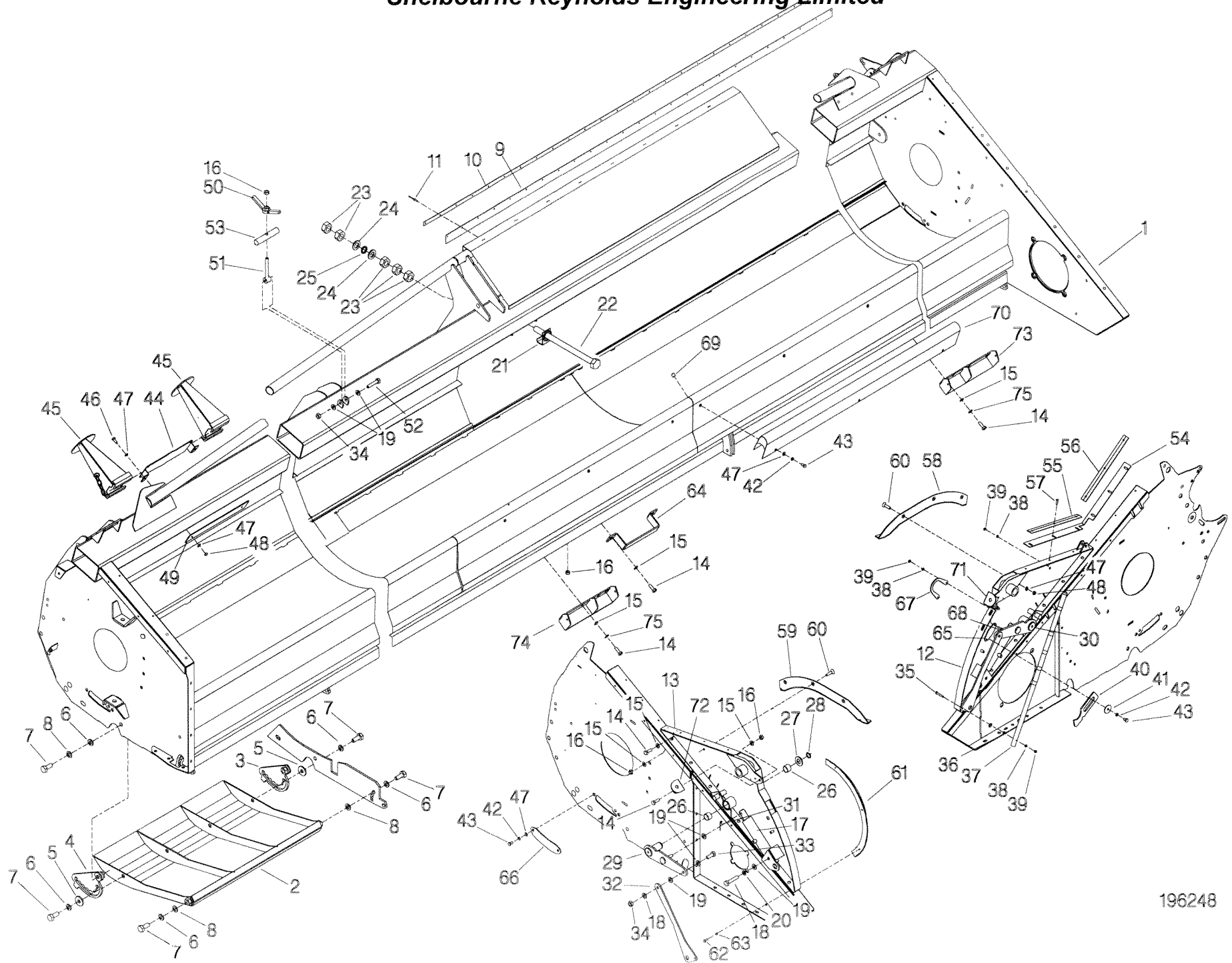
ASSY NUMBER:		196247 09		ASSY DESCRIPTION: 5.4mt BOLT ON PADDLE AUGER ASSY			
ITEM	PART NO	DESCRIPTION	QTY	ITEM	PART NO	DESCRIPTION	QTY
1	198133 01	AUGER WELD ASSY.	1				
2	195848 01	AUGER DRIVE SHAFT	1				
3	HSSF12204	SET SCREW	8				
4	197704 02	IDLER SHAFT	1				
5	197620 01	LH SPIRAL PADDLE	1				
6	197620 02	RH SPIRAL PADDLE	1				
7	HSS-0145	HEX HD SCREW	18				
8	WSH-0012	PLAIN WASHER	18				
9	NUT-0263	NUT	10				
10	WSH-0058	SPRING WASHER	8				
11	194472 01	INSPECTION COVER	2				
12	21709036	TUBE PLUG (PLASTIC)	2				



## Shelbourne Reynolds Engineering Limited

ASSY NUMBER: 196248 19				ASSY DESCRIPTION: FRAME & PARTS SUB RSD18			
ITEM	PART NO	DESCRIPTION	QTY	ITEM	PART NO	DESCRIPTION	QTY
1	198204 01	Rsd18 MAINFRAME	1	40	192809 01	NOSE STOP LATCH	1
2	194395 01	SKID ASSY	2	41	190119 05	WASHER	1
3	193828 01	SKID ADJUSTER PLATE LH	2	42	WSH-0058	SPRING WASHER	5
4	193828 02	SKID ADJUSTER PLATE RH	2	43	HSS-0135	SETSCREW	5
5	190119 07	WASHER	4	44	193221 01	HEADER STAND BRACKET	1
6	WSH-0070	SPRING WASHER	12	45	193222 01	HEADER FRONT STAND	2
7	HSS-0316	SETSCREW	12	46	HSS-0140	SET SCREW	2
8	WSH-0024	PLAIN WASHER	8	47	WSH-0012	PLAIN WASHER	14
9	194545 01	RUBBER SEAL	1	48	NUT-0263	NYLOC NUT	8
10	194493 01	CLAMP STRIP	1	49	195541 01	BACKING PLATE	1
11	POP-0006	POP RIVET	25	50	193244 01	RETAINING NUT	2
12	194913 01	TOP SIDE PLATE LH	1	51	193248 01	RETAINING SCREW	2
13	194913 02	TOP SIDE PLATE RH	1	52	BLTA12380	BOLT	2
14	HSS-0191	SET SCREW	22	53	193251 01	RETAINING BAR	2
15	WSH-0015	PLAIN WASHER	34	54	194000 01	RUBBER SEAL	2
16	NUT-0265	NYLOC NUT	18	55	193233 02	SEAL CLAMP(C/RVS)	2
17	195075 01	HYDRAULIC RAM	2	56	193229 01	SEAL CLAMP LONG	2
17a	RMSK00030	RAM SEAL KIT		57	SCW-4960	BUTTON SKT.HD SCREW	12
18	BLTA12410	BOLT	2	58	194385 01	NOSE RUNNER LH	1
19	WSH-0018	PLAIN WASHER	14	59	194385 02	NOSE RUNNER RH	1
20	WSH-0065	SPRING WASHER	2	60	SCW-1735	CSK SOCKET HD SCW	6
21	194987 01	LOCKING ASSY	2	61	193363 01	ROTOR DEFLECTOR	2
22	HSSA24994	SET SCREW	2	62	HSS-0084	SET SCREW	6
23	NUT-0190	PLAIN NUT	10	63	WSH-0056	SPRING WASHER	6
24	WSH-0036	PLAIN WASHER	4	64	195126 01	FORK LIFT SHOE PLATE	2
25	190548 62	WASHER	2	65	197309 01	PLATE	2
26	BSHK03047	BUSH	4	66	195844 01	COVER PLATE	2
27	WSH-1547	PLAIN WSH	2	67	197308 01	HORSE SHOE PLATE	2
28	CIR-1150	CIRCLIP	2	68	HSS-0086	SET SCREW	4
29	194538 06	LIFT ARM LH	1				
30	194538 07	LIFT ARM RH	1	71	198958 01	LIGHT BRACKET LH (2012 & ON)	1
31	PIN-1150	SPLIT PIN	2	OR	194381 01	LIGHT BRACKET LH (UPTO 2012)	1
32	194537 01	LINK ARM	2	72	198958 02	LIGHT BRACKET RH (2012 & ON)	1
33	HSS-0241	SET SCREW	2	OR	194381 02	LIGHT BRACKET RH (UPTO 2012)	1
34	NUT-0269	NYLOC NUT	4	73	195125 01	FORK LIFT STOP PLATE LH	1
35	HSSA06290	SET SCREW	1	74	195125 02	FORK LIFT STOP PLATE RH	1
36	NUT-0160	PLAIN NUT	1	75	WSH-0061	SPRING WASHER	4
37	192494 01	NOSE HEIGHT INDICATOR ROD	1				
38	WSH-0009	PLAIN WASHER	17				
39	NUT-0260	NYLOC NUT	17				

**Shelbourne Reynolds Engineering Limited**



196248

## Shelbourne Reynolds Engineering Limited

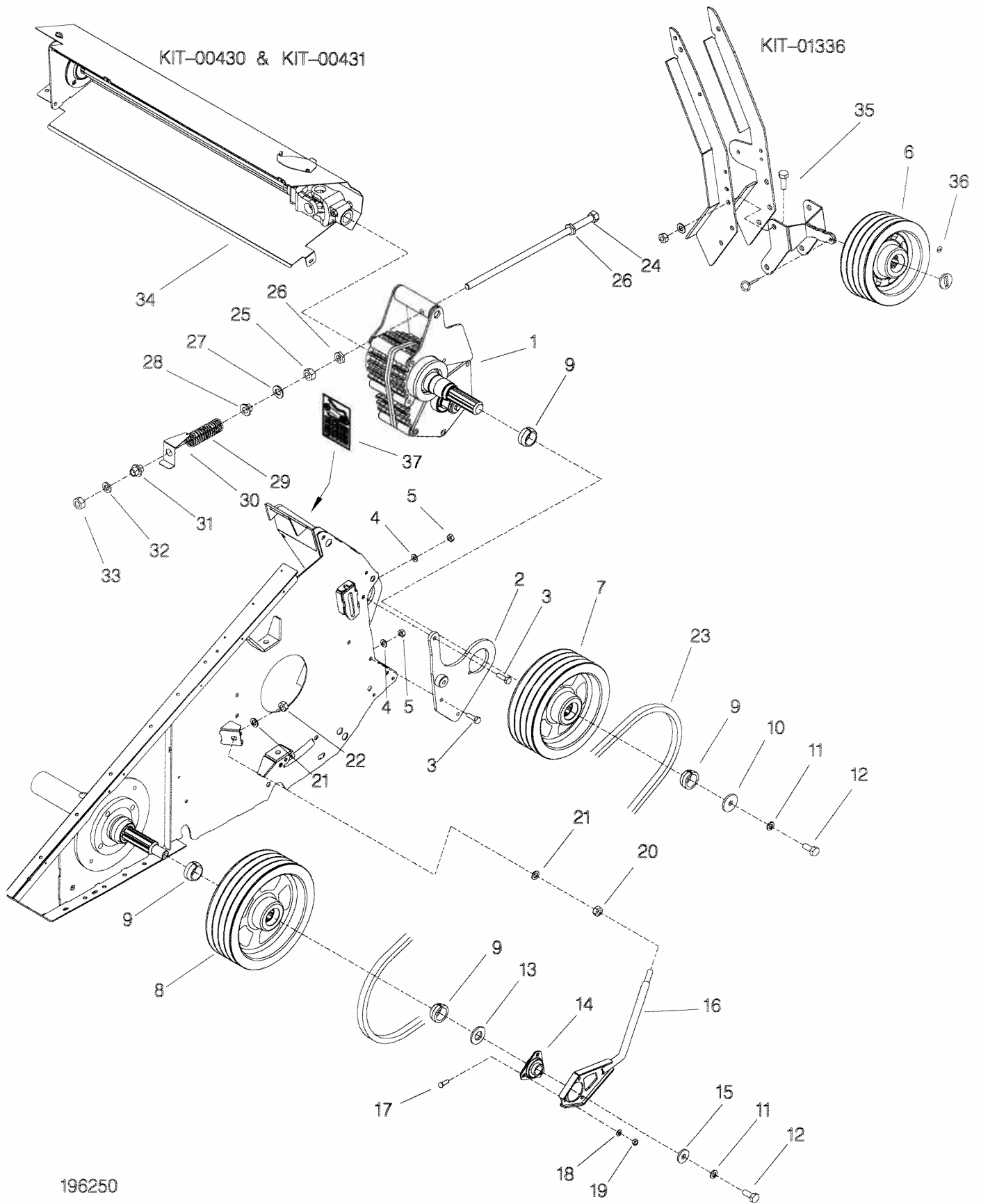
ASSY NUMBER: 196249 02				ASSY DESCRIPTION: EMBLEMS & GUARDS SUB RSD			
ITEM	PART NO	DESCRIPTION	QTY	ITEM	PART NO	DESCRIPTION	QTY
1	198297 01	NOSE GUARD W/A (2010 & ON)	1	39	198322 01	OIL LEVEL VIEWER	1
OR	197970 01	FRONT LH GUARD (2009 ONLY)	1	40	PIN-01950	LYNCH PIN	2
2	HSS-0140	SET SCREW	8	41	198086 01	LATCH PLATE (2010 & ON)	2
3	WSH-0058	SPRING WASHER	5	OR	198281 01	STIFFN'R LATCH PLT (2009 ONLY)	1
4	WSH-0012	PLAIN WASHER	10	42	191841 03	SHEARBOLT HOLDER	1
5	198030 01	LH SIDE GUARD	1	43	HSS-0096	SET SCREW	2
6	HSS-0086	SET SCREW	14	44			
7	NUT-0263	NYLOC NUT	5	45			
8	WSH-0009	PLAIN WASHER	26	46			
9	NUT-0260	NYLOC NUT	16	47	198288 01	GEARBOX COVER PLT	1
10				48	HSS-0145	SET SCREW	2
11	198013 01	LH REAR BACK PLATE ASSY	1	49	198221 01	INNER SHIELD	1
12	HSS-0198	SET SCREW	5				
13	WSH-0015	PLAIN WASHER	10				
14	NUT-0265	NYLOC NUT	10				
15	BLTA10384	SHEARBOLT	5				
16	194873 01	RH SIDE GUARD ASSY	1				
17	194364 01	CANNISTER BRACKET	1				
18	198289 01	GUARD SUPPORT BRACKET	1				
19	197861 01	EMBLEM (PATENTS)	1				
20							
21	198764 01	EMBLEM (SHELBOURNE REYNOLDS)	2				
22	800215 01	EMBLEM (HAND CRUSH)	1				
23	TNF-0011	EMBLEM (READ MANUAL)	1				
24							
25	TNF-0010	EMBLEM (BLOCK)	2				
26	198105 01	EMBLEM (HEADER MAINTENANCE)	1				
27	190702 04	EMBLEM (SLING POINT)	4				
28	613205 01	EMBLEM (SHEARBOLT PART NO)	1				
29	193392 01	EMBLEM (STOP ENG BEFORE)	1				
30	193393 01	EMBLEM (STOP ENG BEFORE)	1				
31	TNF-0012	EMBLEM (CHAIN, AUGER & PTO)	1				
32							
33	HSS-0084	SET SCREW	2				
34	CHN-0145	CHAIN	0.17				
35	CHN-0145	CHAIN	0.17				
35	CHN-0145	CHAIN	0.17				
36	CLP-00103	R CLIP	1				
37							
38	HND-0000	BLACK PLASTIC HANDLE	2				



## Shelbourne Reynolds Engineering Limited

ASSY NUMBER: 196250 01				ASSY DESCRIPTION: INPUT/DRIVE MTG SUB ASSY (UPTO RSD24)			
ITEM	PART NO	DESCRIPTION	QTY	ITEM	PART NO	DESCRIPTION	QTY
1	GEA-0057	INPUT GEARBOX ASSY	1				
2	198018 01	GEARBOX SUPPORT PLT W/ASSY	1				
3	BLTA12290	BOLT	3				
4	WSH-0012	PLAIN WASHER	3				
5	NUT-0269	NYLOC NUT	3				
6	195927 01	PULLEY DRIVER	1				
7	195928 01	PULLEY DRIVER	1				
8	195929 01	PULLEY DRIVER	1				
9	195935 01	COLLAR	4				
10	190548 79	WASHER	1				
11	WSHA30161	WASHER	2				
12	HSS-0315	SET SCREW	2				
13	190548 36	WASHER	1				
14	BRG-0240	BEARING	1				
15	190119 99	WASHER	1				
16	198142 01	TIE BAR W/ASSY	1				
17	BLT-3745	COACHBOLT	3				
18	WSH-0015	PLAIN WASHER	3				
19	NUT-0265	NYLOC NUT	3				
20	NUT-0180	PLAIN NUT PLATED	1				
21	WSH-0024	PLAIN WASHER	2				
22	NUT-0271	NYLOC NUT	1				
23	BEL-05355	BELT	4				
24	198029 01	GEARBOX ADJUSTER ROD	1				
25	NUT-0185	PLAIN NUT	1				
26	NUT-0385	HALF NUT	2				
27	WSH-0030	PLAIN WASHER	1				
28	198028 01	REAR SPRING BOSS	1				
29	SPGE02530	DIE SPRING	1				
30	198218 01	SPRING TENSION GUIDE	1				
31	198027 01	FRONT SPRING BOSS	1				
32	190119 30	WASHER	1				
33	NUTA02200	NYLOC NUT	1				
34							
35	KIT-01336	SPARE PULLEY MOUNTING KIT	1				
36	197244 01	PULLEY IDENTIFICATION DECAL	1				
37	198220 01	SPEED SELECTION DECAL	1				
38	198943 01	SPRING SPACER (40mm)	1				

# Shelbourne Reynolds Engineering Limited

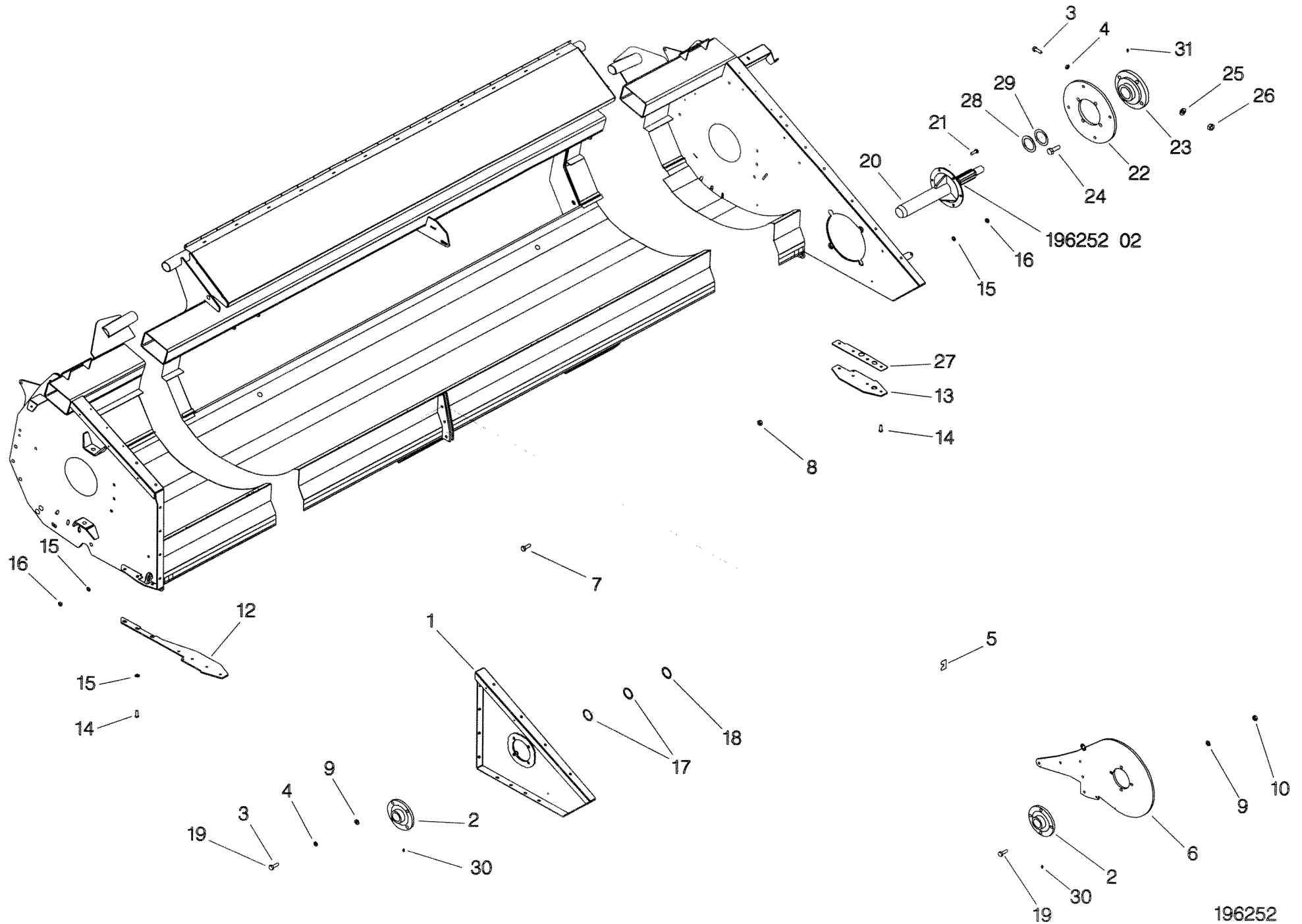


196250

## Shelbourne Reynolds Engineering Limited

ASSY NUMBER: 196252 02				ASSY DESCRIPTION: ROTOR MTG SUB ASSY RSD (70mm SHAFT)			
ITEM	PART NO	DESCRIPTION	QTY	ITEM	PART NO	DESCRIPTION	QTY
1	194915 01	RH SIDE PLATE ASSY	1				
2	BRG-3275	BEARING	2				
3	HSS-0235	SET SCREW	7				
4	WSH-0065	SPRING WASHER	8				
5	194401 01	SHIM	3				
6	194400 01	DIVISION PLATE	1				
7	BLTA12290	BOLT	5				
8	NUTA07120	AERO-TIGHT NUT	5				
9	WSH-0018	PLAIN WASHER	8				
10	NUT-0269	NYLOC NUT	4				
12	194404 01	DIVIDING PLATE RH	1				
13	198991 01	DIVIDING PLATE LH	1				
14	SCW-0516	SCREW	10				
15	WSH-0015	PLAIN WASHER	13				
16	NUT-0265	NYLOC NUT	10				
17	192876 01	SHIM (1mm)	5				
18	192876 02	SHIM (2mm)	5				
19	HSS-0250	SET SCREW	5				
20	198138 01	DRIVE SHAFT W/ASSY	1				
21	HSSG10204	SET SCREW	6				
22	198122 01	BEARING SUPPORT	1				
23	BRG-27040	BEARING	1				
24	HSS-0319	SET SCREW	4				
25	WSH-0024	PLAIN WASHER	4				
26	NUT-0271	NYLOC NUT	4				
27	198141 01	FOOT PACKER PLATE	1				
28	190548 73	WASHER	2				
29	190548 74	WASHER	2				
30	NIP-00600	GREASE NIPPLE	2				
31	NIP-0001	GREASE NIPPLE	1				

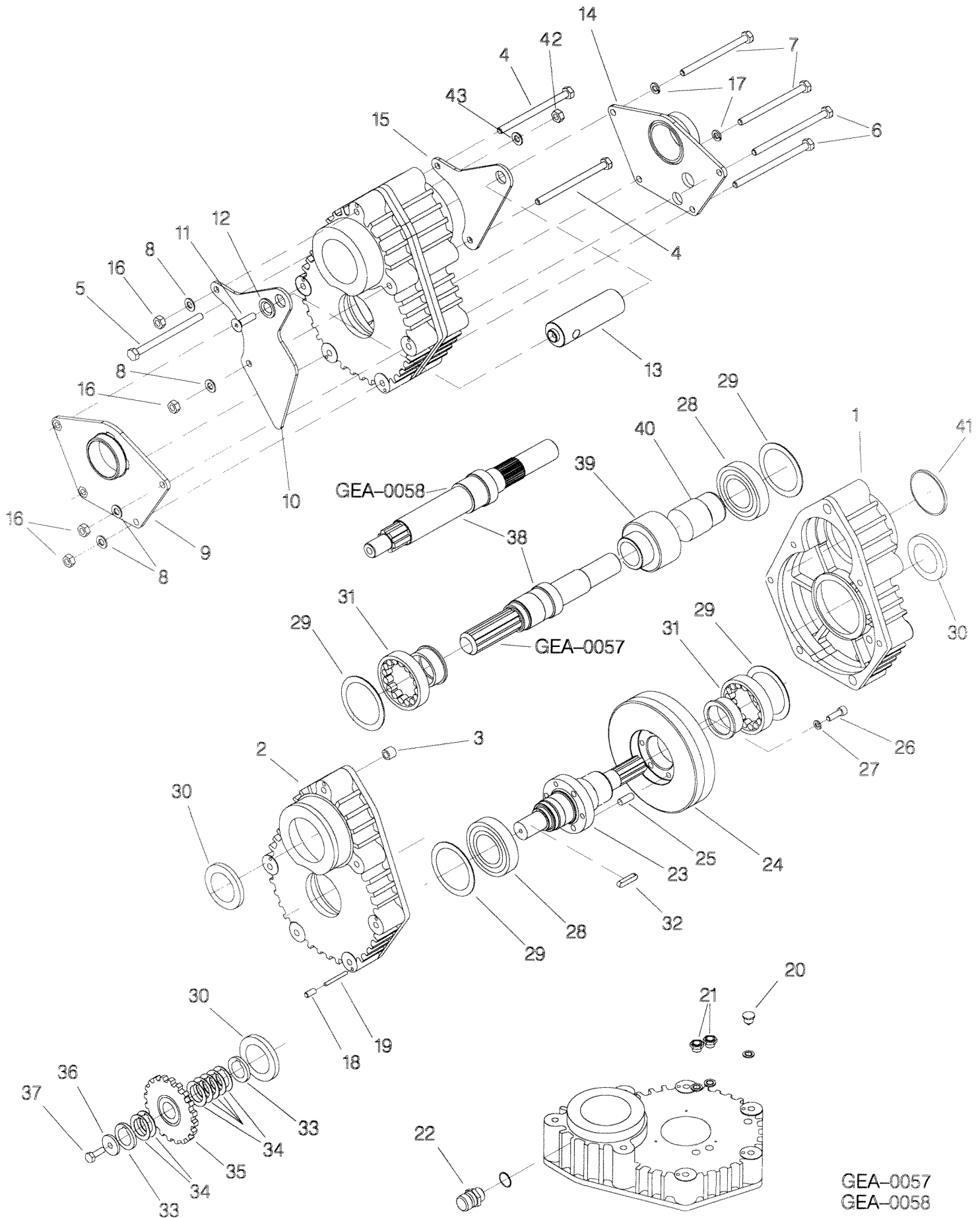
**Shelbourne Reynolds Engineering Limited**



## Shelbourne Reynolds Engineering Limited

ASSY NUMBER: GEA-0057				ASSY DESCRIPTION: INPUT GEARBOX , RSD HEADER			
ITEM	PART NO	DESCRIPTION	QTY	ITEM	PART NO	DESCRIPTION	QTY
1	197619 03	CASE HALF	1	41	SEAZ09000	PLUG SEAL	1
2	197619 02	CASE HALF	1	42	NUT-0270	NYLOC NUT (THIN)	1
3	192598 01	DOWEL	3	43	WSH-0019	PLAIN WASHER (FORM B)	1
4	BLTA12810	HEX HEAD BOLT	2				
5							
6	BLTA12750	HEX HEAD BOLT	3				
7	BLT-2276	HEX.HEAD BOLT	2				
8	WSH-0018	PLAIN WASHER	4				
9	198021 01	G/BOX MOUNTING PLT LH	1				
10	198026 01	G/BOX ADJ PLT LH	1				
11	SCW-1930	CSK SKT HD SCREW	2				
12	198024 01	CSK WASHER	2				
13	198023 01	GEARBOX ADJUSTER	1				
14	198022 01	G/BOX MOUNTING PLT RH	1				
15	198025 01	G/BOX ADJ PLT RH	1				
16	NUT-0269	NYLOC NUT	4				
17	WSHA20121	SHAKEPROOF WASHER	2				
18	SCW-4535	SOCKET GRUBSCREW	3				
19	192597 01	JACKING ROD VS	3				
20	FIT-0253	PLUG	1				
21	FITD00005	SIGHT GLASS/SEAL	2				
22	FIT-0255	BREATHER	1				
23	192591 01	INPUT SHAFT	1				
24	REF	GEAR (192592)					
25	PIN-61217	DOWEL PIN	3				
26	SCW-0196	CAP HEAD SCREW	3				
27	WSH-0061	SPRING WASHER	3				
28	BRG-7040	BEARING	2				
29	192596 01	RING	4				
30	SEA-0590	SHAFT SEAL	3				
31	BRG-16080	BEARING	2				
32	K1008045	KEY	1				
33	191692 01	SPACER	2				
34	191692 02	SPACER	7				
35	REF	SPROCKET SLEEVE					
36	190548 01	RETAINING WASHER	1				
37	HSSF10174	SET SCREW	1				
38	198137 01	PINION SHAFT	1				
39	REF	PINION (193599)					
40	195526 01	SLEEVE	1				

# Shelbourne Reynolds Engineering Limited

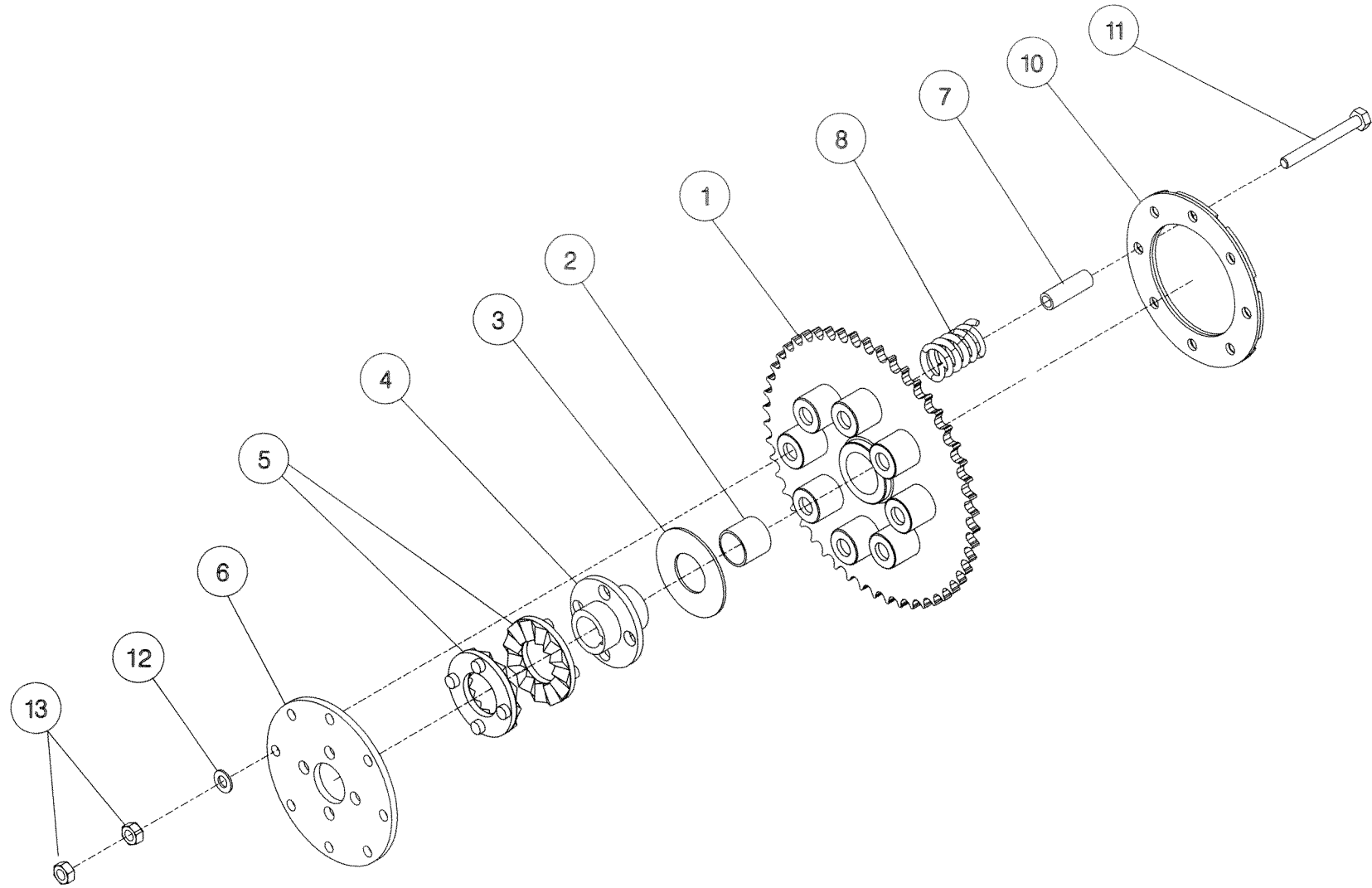


GEA-0057  
GEA-0058

## Shelbourne Reynolds Engineering Limited

ASSY NUMBER: KIT-00121				ASSY DESCRIPTION: AUGER DRV/SPRKT CLUTCH			
ITEM	PART NO	DESCRIPTION	QTY	ITEM	PART NO	DESCRIPTION	QTY
1	195420 01	50T SPROCKET ASSY	1				
2	BSHK05056	BUSH	1				
3	192008 02	THRUST WASHER	1				
4	195850 01	SPLINED CLUTCH HUB	1				
5	131005	CLUTCH PLATE	2				
6	195429 01	DRIVE DISC	1				
7	131073 04	SPACER	8				
8	131063	SPRING	8				
10	195427 01	LOCKING RING	1				
11	BLT-2270	BOLT	8				
12	WSH-0018	PLAIN WASHER	8				
13	NUT-0170	PLAIN NUT	16				

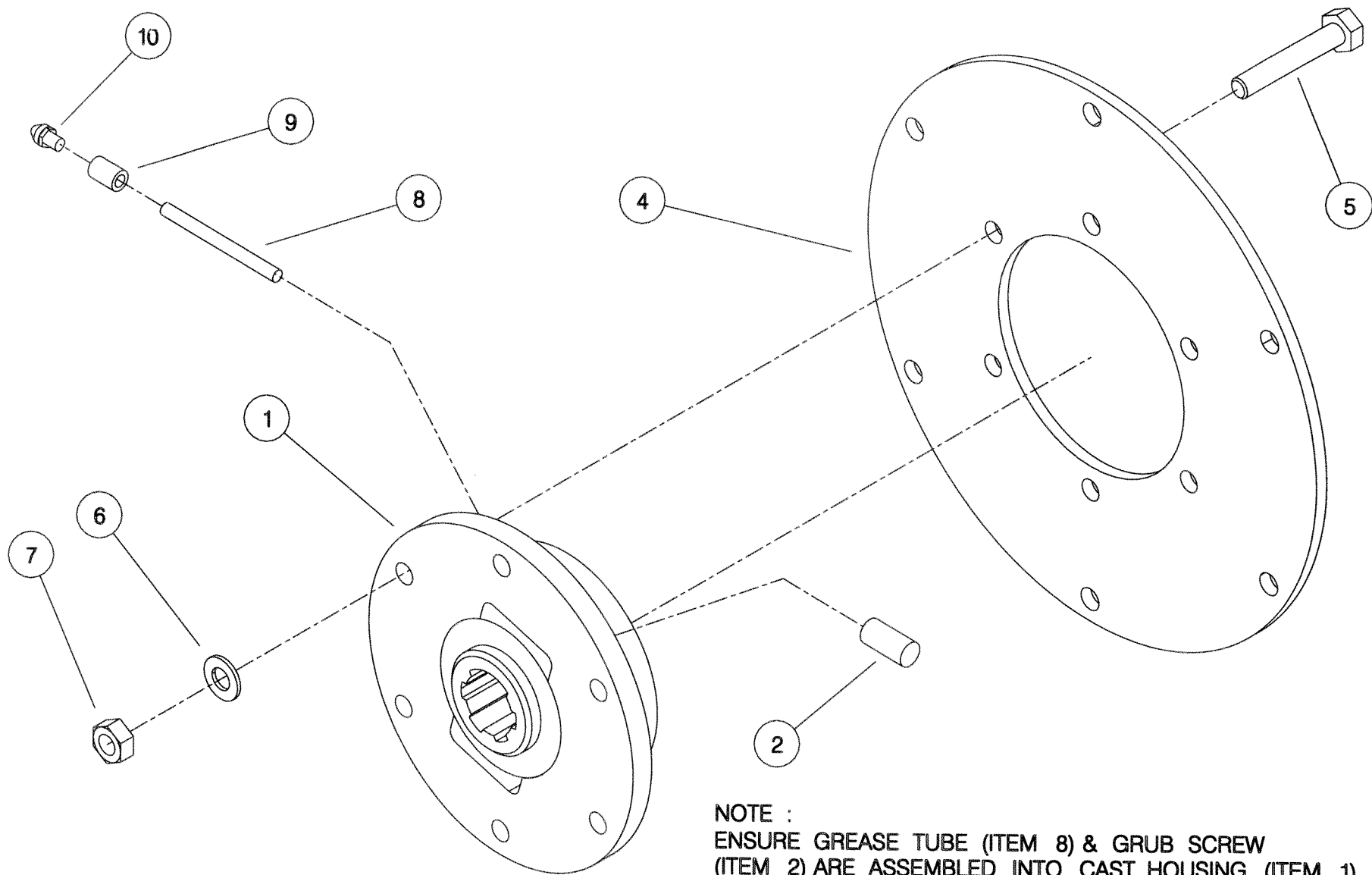
**Shelbourne Reynolds Engineering Limited**



KIT - 00119  
KIT - 00121

**Shelbourne Reynolds Engineering Limited**

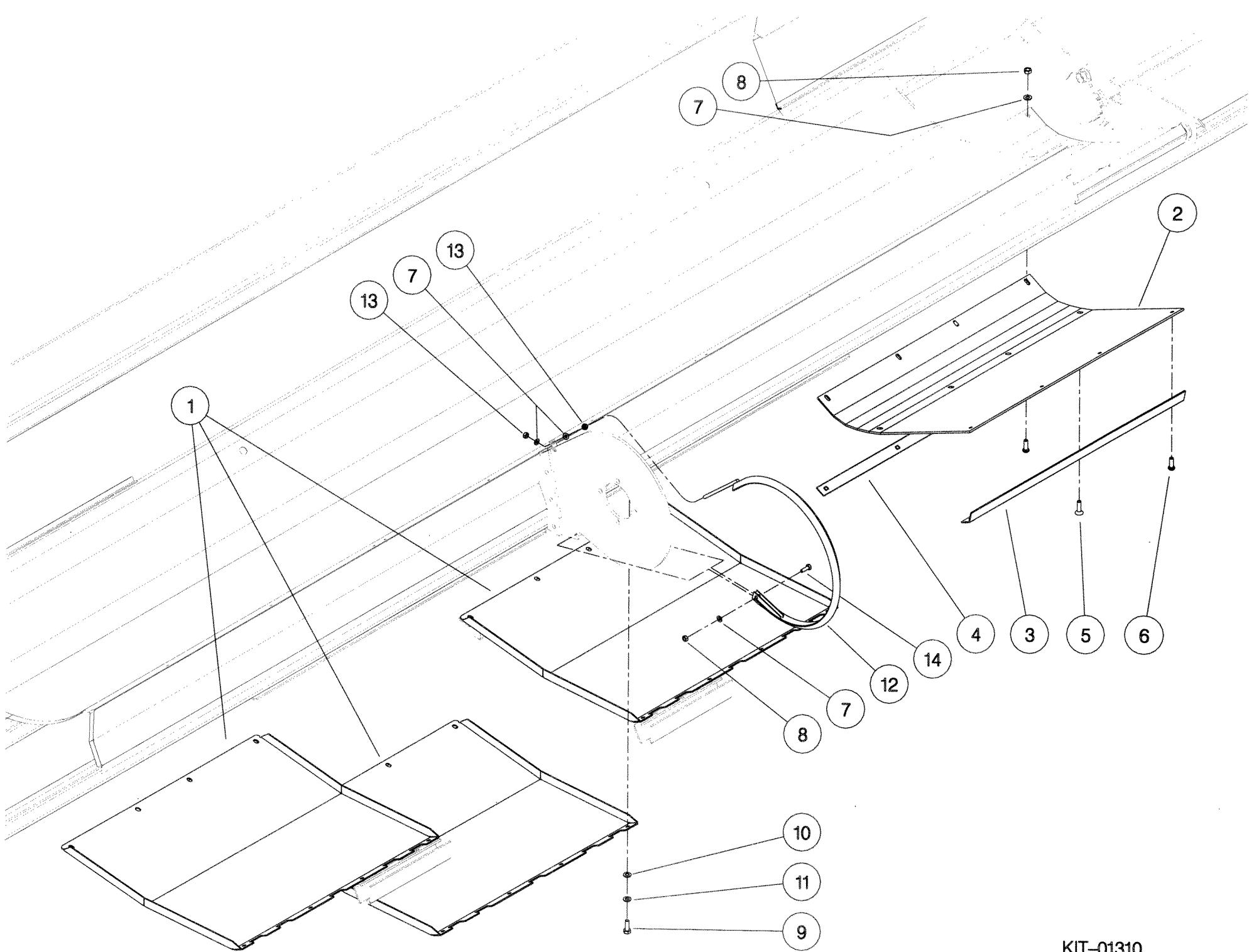
ASSY NUMBER:		KIT-00976		SUB ASSY DESCRIPTION: BALL JOINT COUPLING			
ITEM	PART NO	DESCRIPTION	QTY	ITEM	PART NO	DESCRIPTION	QTY
1	193114 01	SPLINED BALL	1				
2	SCW-4530	GRUB SCREW	1				
3							
4	193106 01	DRIVE RING PLATE	1				
5	HSS-0198	SETSCREW	6				
6	WSH-0015	WASHER	6				
7	NUT-0265	NUT	6				
8	193077 01	GREASE TUBE	1				
9	193078 01	GREASE TUBE ADAPTOR	1				
10	NIP-00600	GREASE NIPPLE	1				



**NOTE :**  
 ENSURE GREASE TUBE (ITEM 8) & GRUB SCREW  
 (ITEM 2) ARE ASSEMBLED INTO CAST HOUSING (ITEM 1)  
 THE ORIENTATION SHOWN IS FOR A R.H. ROTOR  
 OPPOSITE ORIENTATION FOR L.H. ROTOR.

**Shelbourne Reynolds Engineering Limited**

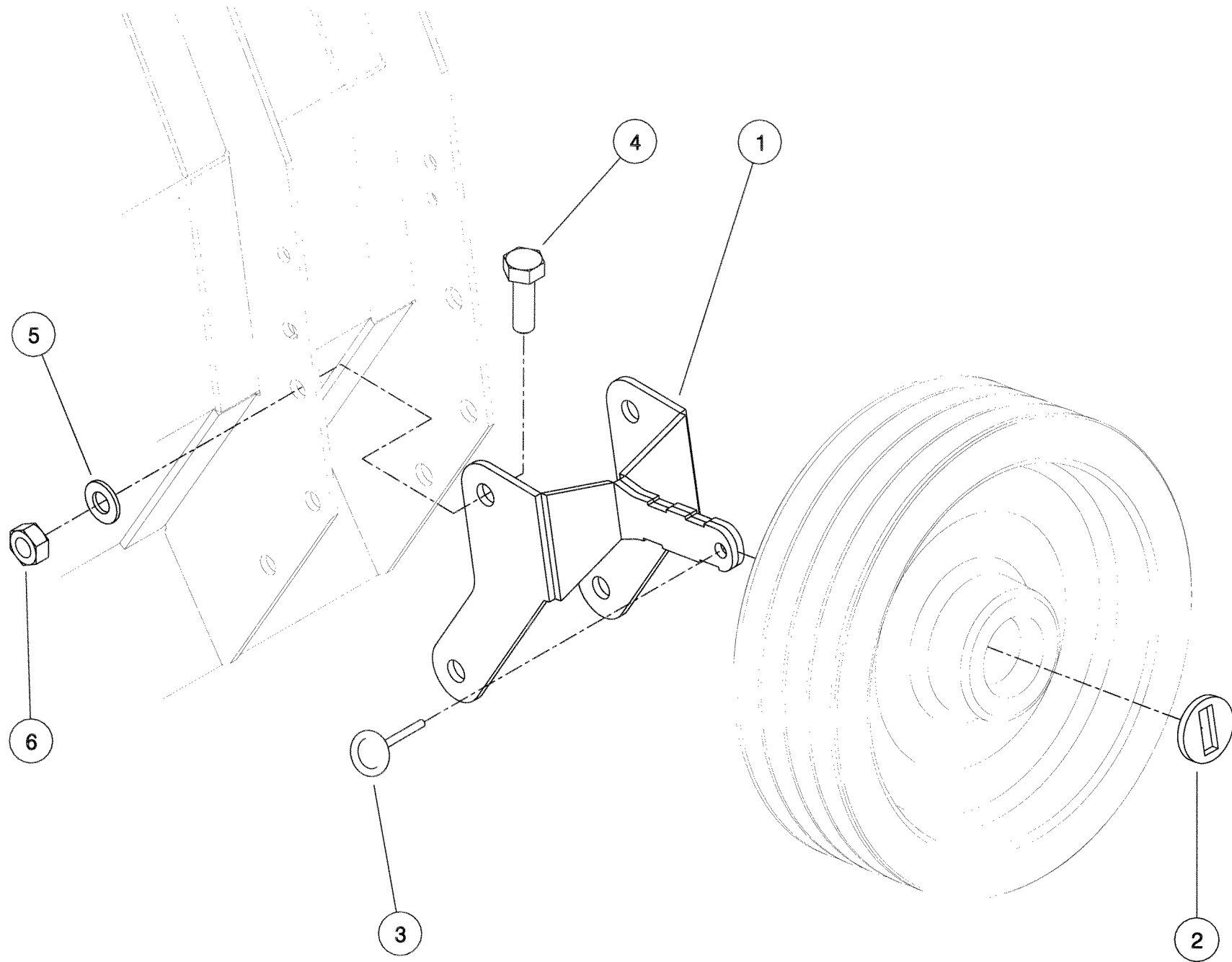
ASSEMBLY NO:		KIT-01310		ASSEMBLY DESCRIPTION:		UNIVERSAL BELLY/WEAR PLATE KIT	
ITEM	PART NO	DESCRIPTION	QTY	ITEM	PART NO	DESCRIPTION	QTY
1	195866 01	BELLY PAN	3				
2	195111 01	SKID WEAR PLATE	2				
3	195142 01	FIXING PLATE	2				
4	195144 01	FIXING PLATE	2				
5	SCW-1740	SCREW	8				
6	BLT-2700	COACH BOLT	16				
7	WSH-0012	WASHER	27				
8	NUT-0263	NUT	25				
9	HSS-0191	BOLT	8				
10	WSH-0015	PLAIN WASHER	4				
11	WSH-0061	WASHER	8				
12	192502 01	V STRIP	1				
13	NUT-0164	NUT	2				
14	HSS-0140	SET SCREW	1				



KIT-01310

**Shelbourne Reynolds Engineering Limited**

ASSY NUMBER:		KIT-01336		SUB ASSY DESCRIPTION: SPARE PULLEY MOUNTING BRACKET KIT			
ITEM	PART NO	DESCRIPTION	QTY	ITEM	PART NO	DESCRIPTION	QTY
1	197210 01	PULLEY MOUNTING BRACKET	1				
2	197212 01	WASHER	1				
3	PIN-01950	LYNCH PIN	1				
4	HSS-0317	SETSCREW	4				
5	WSH-0024	WASHER	4				
6	NUT-0271	NYLOC NUT	4				

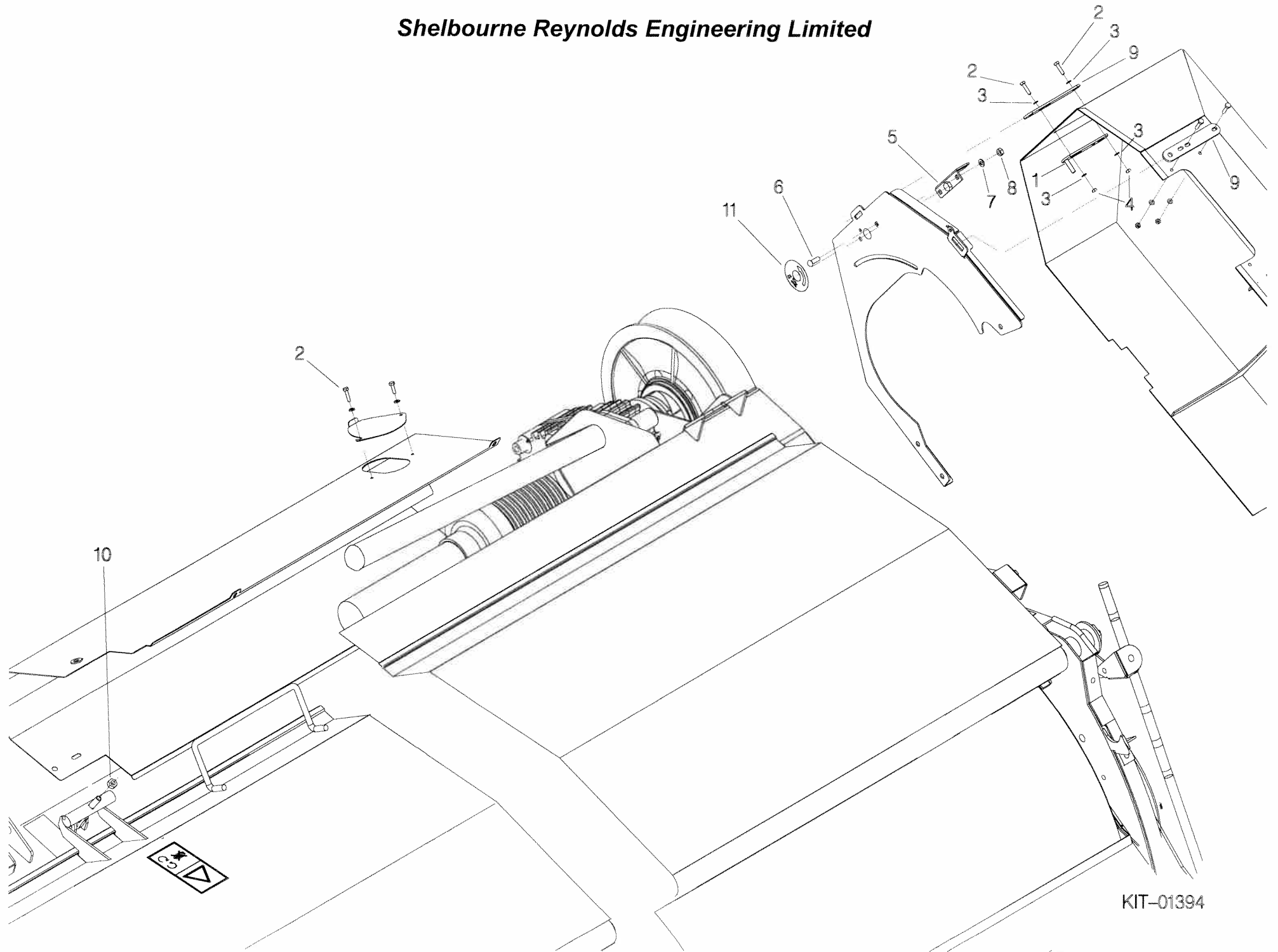


KIT - 01336

## Shelbourne Reynolds Engineering Limited

ASSY NUMBER: KIT-01394				ASSY DESCRIPTION: CE AREA KIT (RSD)			
ITEM	PART NO	DESCRIPTION	QTY	ITEM	PART NO	DESCRIPTION	QTY
1	198318 01	LATCH W/A	1				2
2	HSS-0088	SET SCREW	3				
3	WSH-0009	PLAIN WASHER	4				
4	NUT-0260	NYLOC NUT	2				
5	LTC-00040	SLAM LATCH	1				
6	BLT-4710	COACH BOLT	2				
7	WSH-0012	PLAIN WASHER	2				
8	NUT-0263	NYLOC NUT	2				
9	198086 02	LATCH PLATE	2				
10	NUT-0170	PLAIN NUT	2				
11	192953 01	TRANSFER (1/4 TURN)	1				
		REMOVE STANDARD GUARD LATCHES 02 VERSION WITHOUT HOLES					
		FIT SLAM LATCH AND LATCH					
		REMOVE THUMB SCREW AND FIT ITEM 2					
		REMOVE WING NUTS FROM HOOD & FIT ITEM 10					

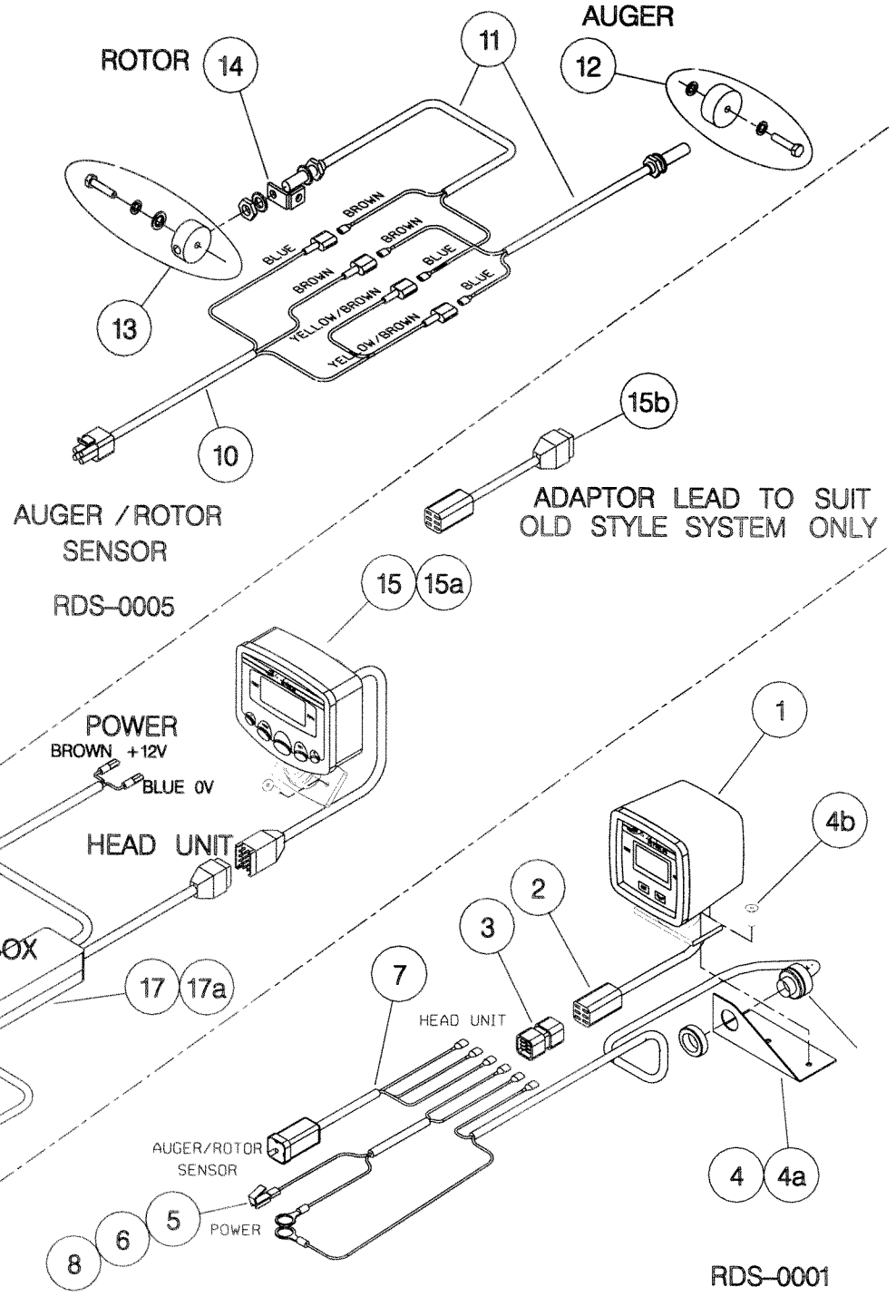
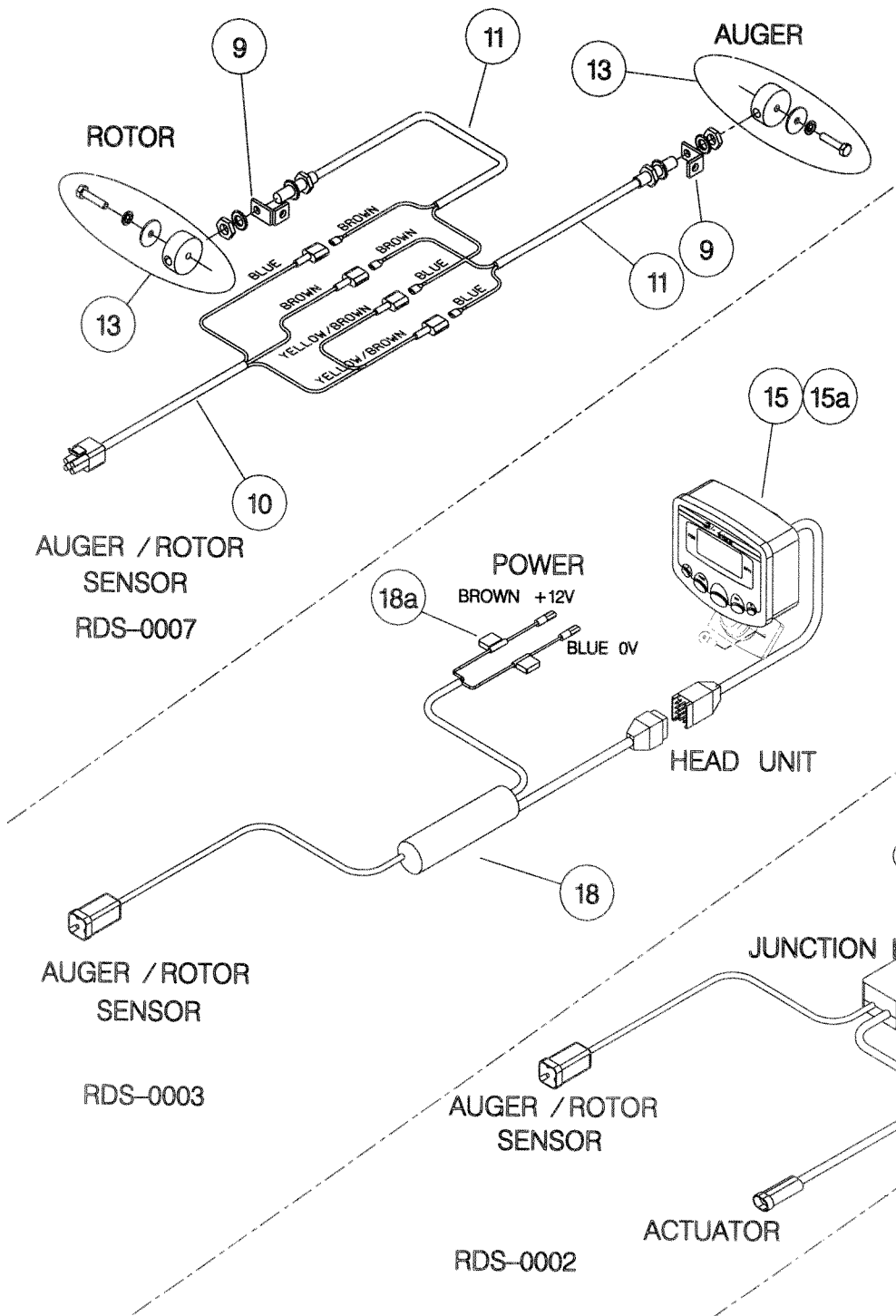
**Shelbourne Reynolds Engineering Limited**



KIT-01394

## Shelbourne Reynolds Engineering Limited

ASSY NUMBER: RDS-0001/RDS-0002/RDS-0003 & RDS-0005/RDS-0007				ASSY DESCRIPTION: RDS EQUIPMENT ALL YEARS			
ITEM	PART NO	DESCRIPTION	QTY	ITEM	PART NO	DESCRIPTION	QTY
1	RDS-0010	TACHO HEAD COMPLETE	1	12	RDS-0019	MAGNET	1
1a	RDS-0022	PLASTIC LOCK NUT & BALL	1	12a	HSS-0088	SETSCREW	1
1b	RDS-0024	POD FOOT	1	12b	WSH-0056	SPRING WASHER	1
2	RDS-0011	TACHO HEAD PLUG AND ARMS	1	12c		FIBRE WASHER	2
3	RDS-0012	HARTING CONNECTOR	1	13	RDS-0020	MAGNET CARRIER	1or2
3a		STICKER	1	13a	HSS-0088	SET SCREW	1
4	RDS-0013	AUDIBLE ALARM	1	13b	WSH-0056	SPRING WASHER	1
4a		FIXING BRACKET	1	13c	WSH-1036	PENNY WASHER	1
4b		SELF TAP.SCREWS	2	14	RDS-0021	ROTOR SENSOR BRACKET	1
5	RDS-0014	POWER CONNECTION LEAD	1	15	RDS-0027	TACHO HEAD COMPLETE	1
6	FUS-0022	FUSE (2 AMP BLADE)	1	15a	RDS-0029	TACHO HEAD FIX.ARM KIT	1
7	RDS-0015	COMBINE LEAD	1	15c	RDS-0006	CONNECTOR LEAD (SPARES ONLY)	1
8	RDS-0016	24V-12V CONVERTER KIT (SPARE PART ONLY)	1	16			
9	198323 01	SENSOR BRACKET (SLOTTED)	2	17	RDS-0028	JUNCTION BOX/COMBINE LEAD	1
10	RDS-0017	HEADER LEAD	1	17a	FUS-00026	FUSE (15 AMP BLADE)	1
11	RDS-0018	SHAFT SENSOR C/W FITTINGS	2	18	RDS-0030	COMBINE LEAD (RSD ONLY)	1
11a	RDS-0018A	PLAIN NUT	2	18a	FUS-0022	FUSE (2 AMP BLADE)	1
11b	WSHA20121	SHAKEPROOF WASHER	2				



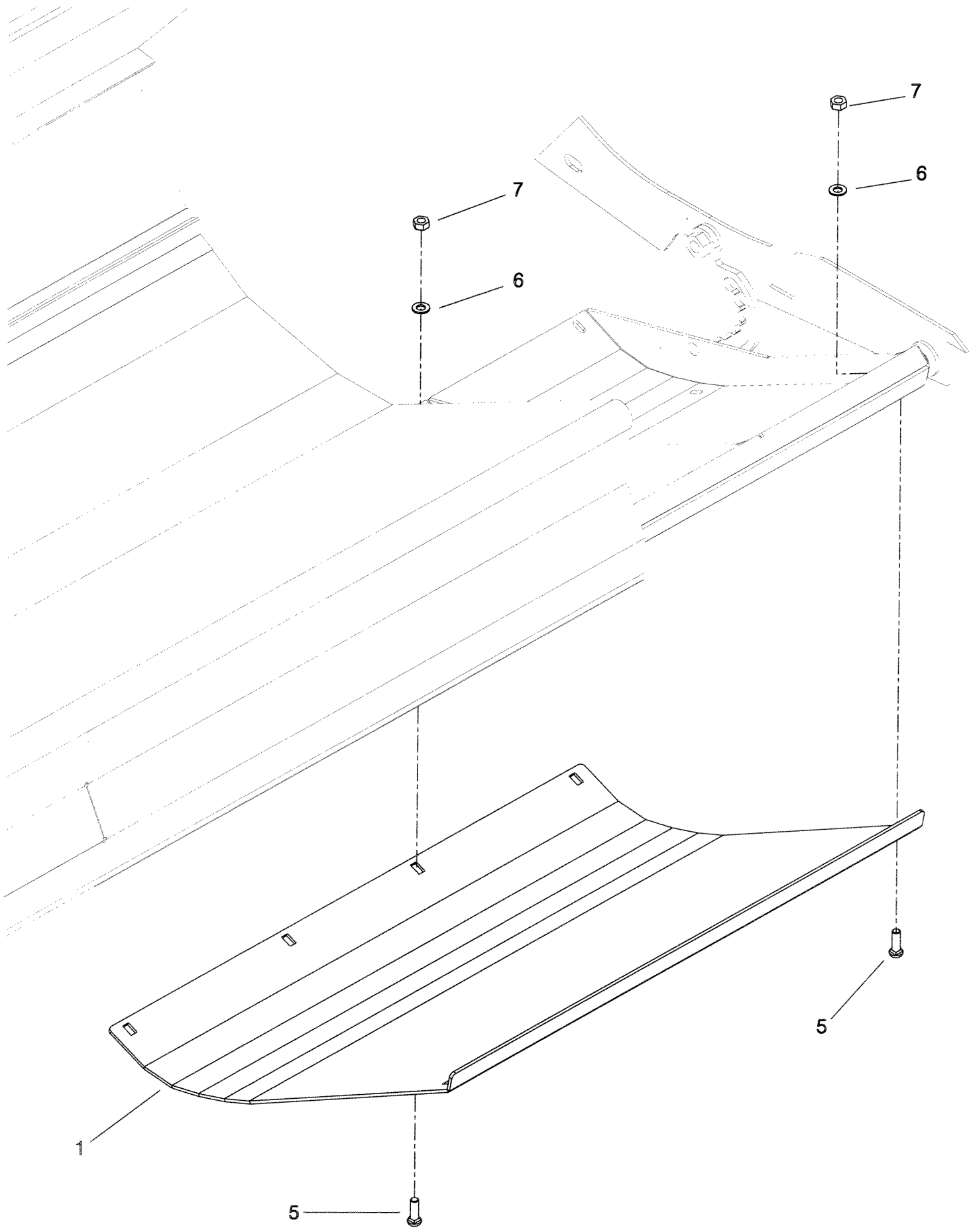


# **Shelbourne Header Rsd Range**

**Kit Option**

**Shelbourne Reynolds Engineering Limited**

ASSY NUMBER:		KIT-01340		SUB ASSY DESCRIPTION: STEEL SKID COVER KIT (HARDOX)			
ITEM	PART NO	DESCRIPTION	QTY	ITEM	PART NO	DESCRIPTION	QTY
1	197369 01	STEEL SKID COVER (HARDOX)	2				
2							
3							
4							
5	BLT-2700	COACHBOLT	16				
6	WSH-0012	WASHER	16				
7	NUT-0263	NYLOC NUT	16				



KIT-01340

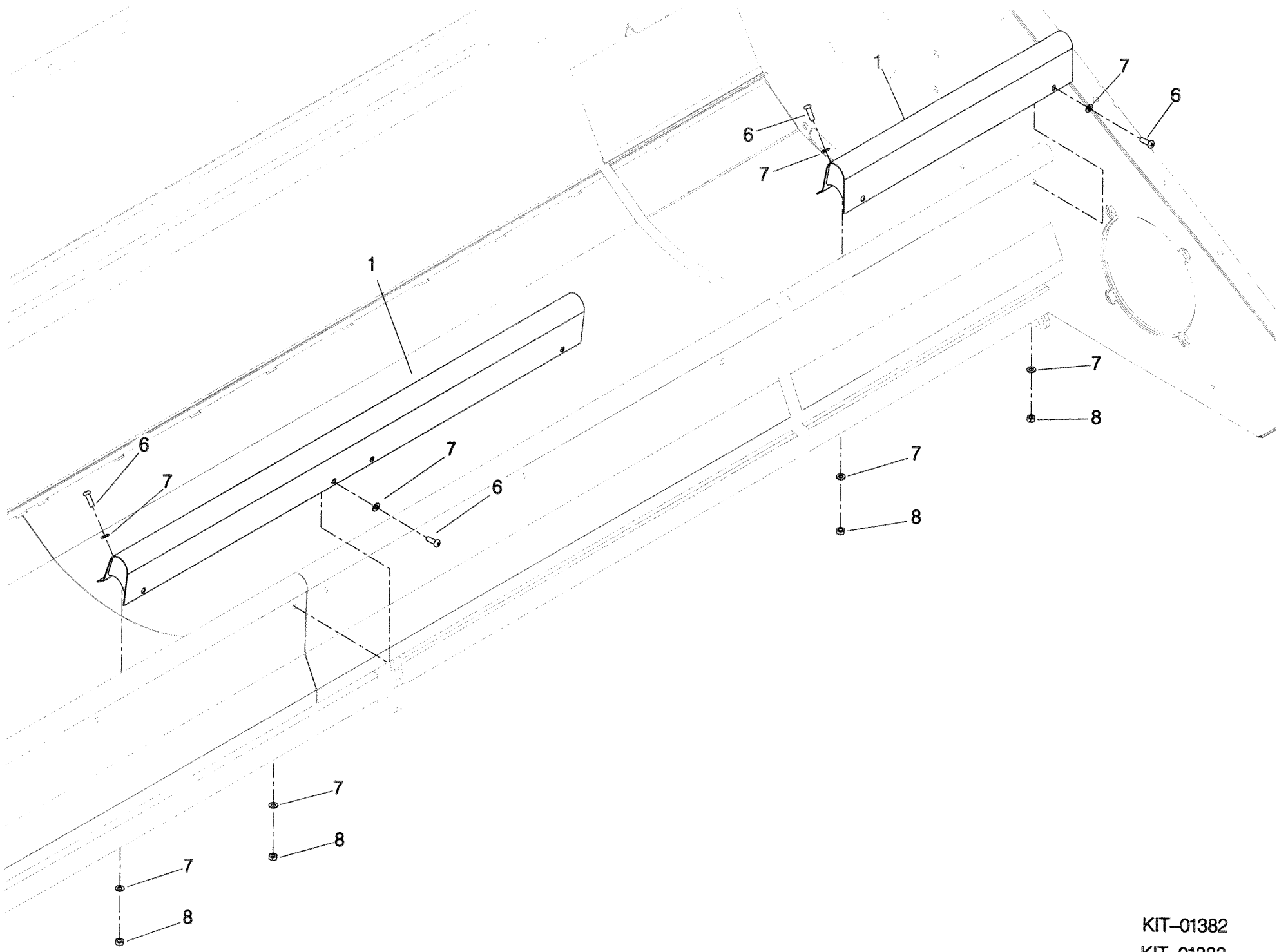


**Shelbourne Reynolds Engineering Limited**

ASSEMBLY NO:		KIT-01382		ASSEMBLY DESCRIPTION:		2009 RSD 1.2mt SPILL PLT EXT KIT	
ITEM	PART NO	DESCRIPTION	QTY	ITEM	PART NO	DESCRIPTION	QTY
1	198215 01	1.2mt SPILL PLT EXT	1				
2							
3							
4							
5							
6	SCW-0525	BUTT. HD SCREW	8				
7	WSH-0012	PLAIN WASHER	16				
8	NUT-0263	NYLOC NUT	8				
<p>FITTING INSTRUCTIONS</p> <p>THIS IS A 2 MAN JOB.</p> <p>ALWAYS WEAR THE APPROPRIATE SAFETY EQUIPMENT.</p> <p>PLACE THE SPILL PLATE EXTENSION ONTO THE FRONT OF THE GRAINSTRIPPER.</p> <p>THE HOLES IN THE SPILL PLATES SHOULD LINE UP WITH THOSE IN THE FRONT OF THE GRAINSTRIPPER.</p> <p>BOLT TOGETHER LOOSELY.</p> <p>MARK OUT WHERE THE HOLES NEED TO BE DRILLED TO ENABLE YOU TO BOLT THE SPILL PLATES ONTO THE GRAINSTRIPPER PAN.</p> <p>DRILL OUT THE HOLES.</p> <p>BOLT TOGETHER LOOSELY.</p> <p>ONCE ALL THE SPILL PLATES ARE IN PLACE YOU CAN TIGHTEN ALL BOLTS.</p>							

**Shelbourne Reynolds Engineering Limited**

ASSEMBLY NO:		KIT-01383		ASSEMBLY DESCRIPTION:		2009 RSD 0.6mt SPILL PLT EXT KIT	
ITEM	PART NO	DESCRIPTION	QTY	ITEM	PART NO	DESCRIPTION	QTY
1	198215 02	0.6mt SPILL PLT EXT	1				
2							
3							
4							
5							
6	SCW-0525	BUTT. HD SCREW	4				
7	WSH-0012	PLAIN WASHER	8				
8	NUT-0263	NYLOC NUT	4				
<p>FITTING INSTRUCTIONS</p> <p>THIS IS A 2 MAN JOB.            ALWAYS WEAR THE APPROPRIATE SAFETY EQUIPMENT.            PLACE THE SPILL PLATE EXTENSION ONTO THE FRONT OF THE GRAINSTRIPPER.            THE HOLES IN THE SPILL PLATES SHOULD LINE UP WITH THOSE IN THE FRONT OF THE GRAINSTRIPPER.            BOLT TOGETHER LOOSELY.            MARK OUT WHERE THE HOLES NEED TO BE DRILLED TO ENABLE YOU TO BOLT THE SPILL PLATES ONTO THE            GRAINSTRIPPER PAN.            DRILL OUT THE HOLES.            BOLT TOGETHER LOOSELY.            ONCE ALL THE SPILL PLATES ARE IN PLACE YOU CAN TIGHTEN ALL BOLTS.</p>							



KIT-01382  
KIT-01383

**Shelbourne Reynolds Engineering Limited**

ASSEMBLY NO: KIT-01384 ASSEMBLY DESCRIPTION: ANTI-WRAP PLATE KIT

ITEM	PART NO	DESCRIPTION	QTY	ITEM	PART NO	DESCRIPTION	QTY
1	192679 01	ANTI-WRAP PLATE	8				
2	WSH-1034	PENNT WASHER	16				
3	SCW-5180	SELF TAP.SCREW	16				

ON BOTH ENDS  
OF ROTOR

3  
2

1

ON BOTH ENDS  
OF ROTOR

2

3

KIT-01384

