

Shelbourne Header

MF/DRON 30-40 SERIES AUTO LEVEL

DRIVE & ADAPTOR PLATE PARTS MANUAL



**Shelbourne Reynolds Inc.
Colby PO box 607
1250 S Country Club Drive
Colby , Kansas 67701
U.S.A.
Telephone: (785) 462 6299
Fax: (785) 462 6761**



INVESTOR IN PEOPLE

**Shelbourne Reynolds Engineering Ltd
Stanton
Bury St Edmunds
Suffolk IP31 2AR
England**

**Telephone: (01359) 250415
Fax: (01359) 250464**

**(Stores direct (01359) 251231)
(Stores direct (01359) 252031)**

**ISSUE...6
09.09.2009**

LIST OF KIT NUMBERS
FOR C/Rvs & Rsd MF/DRON 30-40 (Auto Level) Machines

ADAPTOR PLATE

- | | | |
|----|-----------|--|
| 1. | 196555 02 | ADAPTOR PLATE ASSY MF/DRON 30-40 Auto Level |
| 2. | 196555 17 | ADAPTOR PLATE ASSY AGCO |
| 3. | 196555 18 | ADAPTOR PLATE ASSY MF WORLDWIDE PICKUP ERPEN |
| 4. | KIT-00631 | ADAPTOR PLATE MF-30-40(AUTO,1996) |
| 5. | KIT-00643 | ADAPTOR PLATE AGCO (C/RVS RSD) |
| 6. | KIT-00812 | FILL IN KIT MF WORLDWIDE PICKUP ERPEN |

DRIVE OPTION

- | | | |
|----|-------------|--|
| 1. | 196549 115B | DRIVE KIT ASSY MF/DRON 30-40 (Auto Level)
C/Rvs & Rsd 16/18'
(Without Rotor Gearbox) |
| 2. | 196549 165 | DRIVE KIT DEUTZ-ALLIS C/RVS(18')
(With rotor gearbox) |
| 3. | 196549 165B | DRIVE KIT DEUTZ-ALLIS C/RVS(18')
(Without rotor gearbox) |
| 4. | 196549 166 | DRIVE KIT DEUTZ-ALLIS C/RVS(20')
(With rotor gearbox) |
| 5. | 196549 166B | DRIVE KIT DEUTZ-ALLIS C/RVS(20')
(Without rotor gearbox) |
| 6. | 196549 168 | DRIVE KIT DEUTZ-ALLISC/RVS(22-32')
(With rotor gearbox) |
| 7. | 196549 168B | DRIVE KIT DEUTZ-ALLIS C/RVS(22-32')
(Without rotor gearbox) |
| 8. | KIT-00931 | PTO SUPPORT KIT |

HYDRAULIC KIT

- | | | |
|----|-----------|--|
| 1. | KIT-01707 | HYDRAULIC CONNECTOR MF/DRON 30-40 (Auto Level) |
| 2. | KIT-01720 | HYDRAULIC KIT DEUTZ-ALLIS/GLEANER |
| 3. | KIT-01731 | HYDRAULIC KIT AGCO MULTICOUPLER |

Shelbourne Header C/Rvs & Rsd Range

Adaptor Plate

Shelbourne Reynolds Engineering Limited

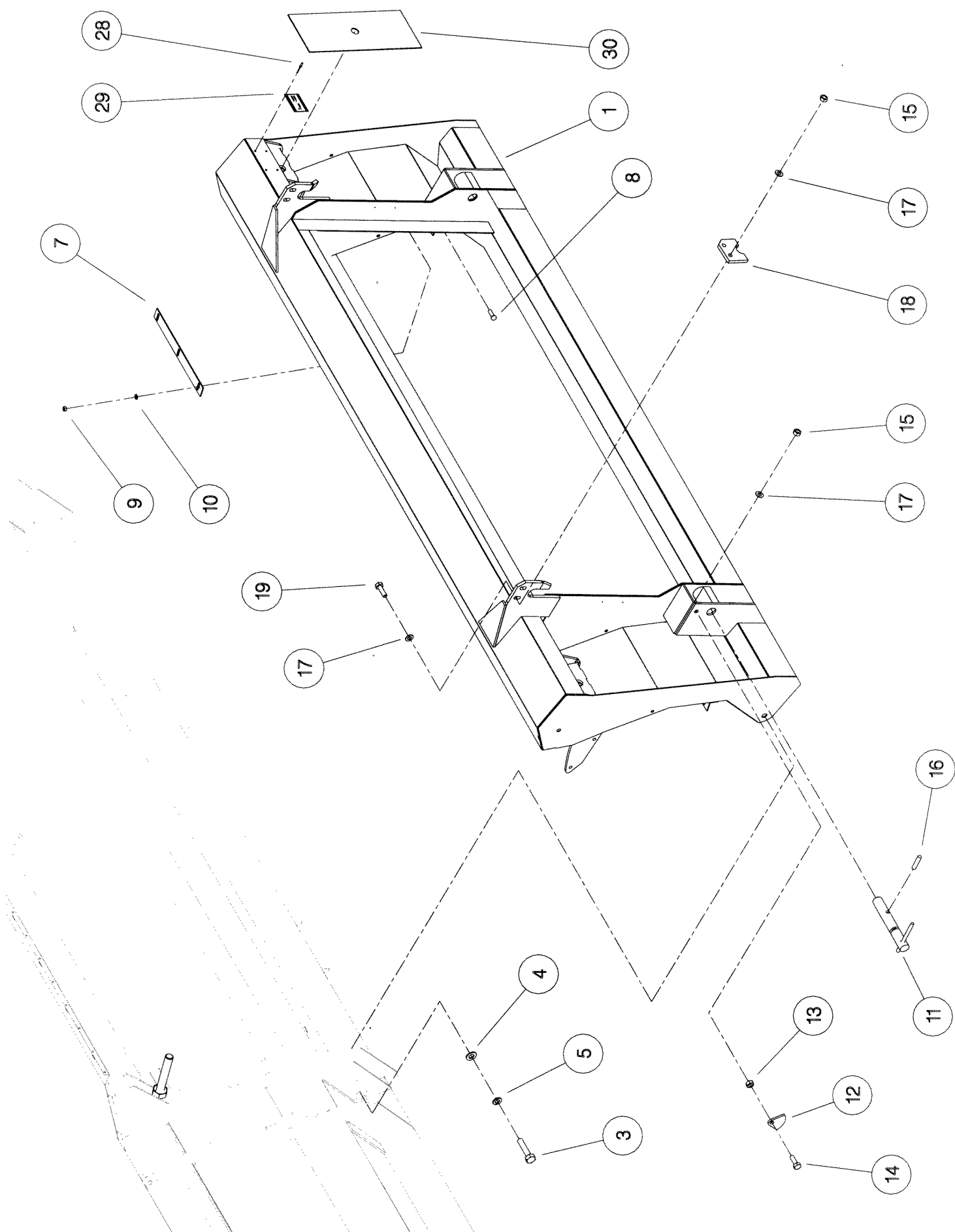
ASSY NUMBER: 196555 02		ASSY DESCRIPTION: ADAPTOR PLATE ASSY MF DRON (AUTO LEVEL)					
ITEM	PART NO	DESCRIPTION	QTY	ITEM	PART NO	DESCRIPTION	QTY
	KIT-00631	ADAPTOR PLATE SUB	1				

Shelbourne Reynolds Engineering Limited

ASSY NUMBER: 196555 18		ASSY DESCRIPTION: ADAPT.PLT.ASSY MF WORLDWIDE PICKUP ERPN					
ITEM	PART NO	DESCRIPTION	QTY	ITEM	PART NO	DESCRIPTION	QTY
	KIT-00643	ADAPTOR PLATE SUB	1				
	KIT-00812	FILL IN KIT	1				

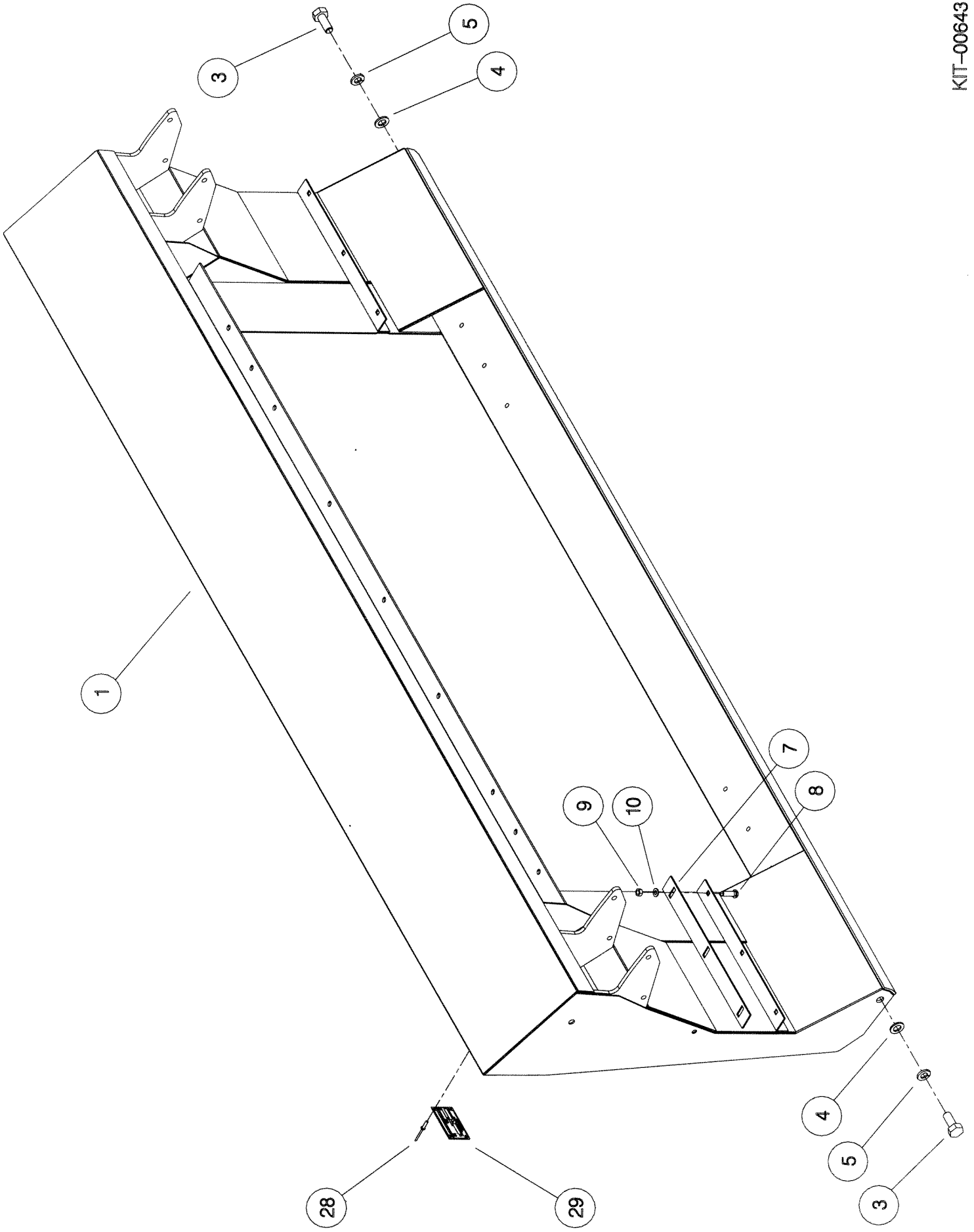
Shelbourne Reynolds Engineering Limited

ASSY NUMBER: KIT-00631		SUB ASSY DESCRIPTION: ADAPTOR PLATE MF-30-40 (AUTO, 1996)					
ITEM	PART NO	DESCRIPTION	QTY	ITEM	PART NO	DESCRIPTION	QTY
1	194262 01	FRAME WELD ASSY	1				
2							
3	HSS-0315	SET SCREW	2				
4	WSH-0024	PLAIN WASHER	2				
5	WSH-0070	SPRING WASHER	2				
6							
7	194261 02	SCRAPER (UPTO 2009)	2				
8	BLT-4710	COACH BOLT (UPTO 2009)	6				
9	NUT-0263	NYLOC NUT (UPTO 2009)	6				
10	WSH-0012	PLAIN WASHER (UPTO 2009)	6				
11	130088 01	LOCKING HANDLE	2				
12	210125 01	LOCKING CAM	2				
13	NUT-0170	PLAIN NUT	2				
14	HSS-0250	SET SCREW	2				
15	NUT-0269	NYLOC NUT	4				
16	PIN-1935	ROLL PIN	2				
17	WSH-0018	PLAIN WASHER	6				
18	191459 01	ADJUSTER PLATE	1				
19	BLTA12290	BOLT	2				
20							
21							
22							
23							
24							
25							
26							
27							
28	POP-0006	POP RIVET	4				
29	134024 05	IDENTIFICATION PLATE	1				
30	195093 01	DUST COVER	2				



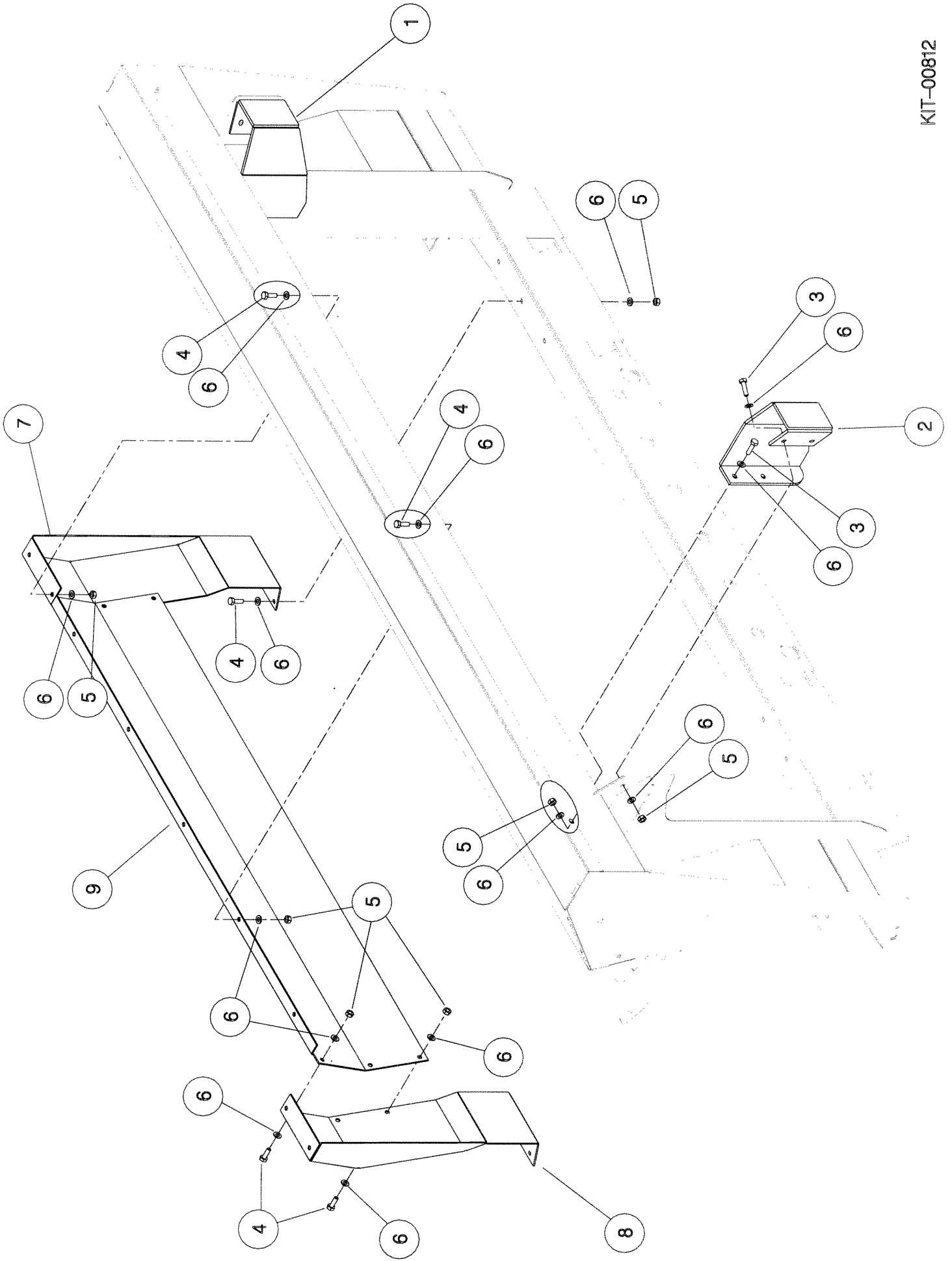
Shelbourne Reynolds Engineering Limited

ASSY NUMBER: KIT-00643		SUB ASSY DESCRIPTION: ADAPTOR PLATE AGCO (R/CVS RSD)					
ITEM	PART NO	DESCRIPTION	QTY	ITEM	PART NO	DESCRIPTION	QTY
1	197657 01	FRAME WELD ASSY	1				
2							
3	HSS-0315	SET SCREW	2				
4	WSH-0024	PLAIN WASHER	2				
5	WSH-0070	SPRING WASHER	2				
6							
7	197658 01	SCRAPER (UPTO 2009)	2				
8	BLT-4710	COACH BOLT (UPTO 2009)	6				
9	NUT-0263	NYLOC NUT (UPTO 2009)	6				
10	WSH-0012	PLAIN WASHER (UPTO 2009)	6				
11							
12							
13							
14							
15							
16							
17							
18							
19							
20							
21							
22							
23							
24							
25							
26							
27							
28	POP-0006	POP RIVET (UPTO 2009)	4				
29	194565 01	IDENTIFICATION PLATE (UPTO 2009)	1				



Shelbourne Reynolds Engineering Limited

ASSY NUMBER: KIT-00812		SUB ASSY DESCRIPTION: FILL IN KIT MF WORLD WIDE PICK UP					
ITEM	PART NO	DESCRIPTION	QTY	ITEM	PART NO	DESCRIPTION	QTY
1	197667 01	LH GUIDE PLATE	1				
2	197667 02	RH GUIDE PLATE	1				
3	HSS-0150	BOLT	4				
4	HSS-0145	BOLT	23				
5	NUT-0263	NYLOC NUT	27				
6	WSH-0012	PLAIN WASHER	54				
7	197665 01	LH FILL IN PLATE	1				
8	197665 02	RH FILL IN PLATE	1				
9	197666 01	UPPER FILL IN PLATE	1				



Shelbourne Header C/Rvs & Rsd Range

Drive Option

Shelbourne Reynolds Engineering Limited

ASSY NUMBER: 196549 115		ASSY DESCRIPTION:DRIVE KIT MF DRON/JD(BR)C/RVs/Rsd 16/18'					
ITEM	PART NO	DESCRIPTION	QTY	ITEM	PART NO	DESCRIPTION	QTY
1a OR 1b	192592 01	INPUT GEAR (42t) WITHOUT ROTOR GEARBOX	1				
2a OR 2b	193599 01	PINION (27t) WITHOUT ROTOR GEARBOX	1				
3	PTO-26013	PTO	1				
3A	PTO-00080	PTO YOKE-COMBINE (SPARES)	1				
3B	PTO-00083	PTO CROSS BEARING (SPARES)	A/R				
3C	PTO-00119	PTO CLUTCH-HEADER (SPARES)	1				
3D	PTO-00093	PTO GUARD ASSY (SPARES)	1				
3E	BLTA10380	SHEARBOLT	A/R				
3F	NUT-0265	NYLOC NUT	A/R				
4	192768 10	SPROCKET	1				
5	CHN-01920	CHAIN (FIXED GEARBOX MACHINES)	105				
OR	CHN-01920	CHAIN (PIVOTING GEARBOX MACHINES)	111				
6	CHN-01901	JOINING LINK	1				
7	KIT-00931	PTO SUPPORT KIT	1				

Shelbourne Reynolds Engineering Limited

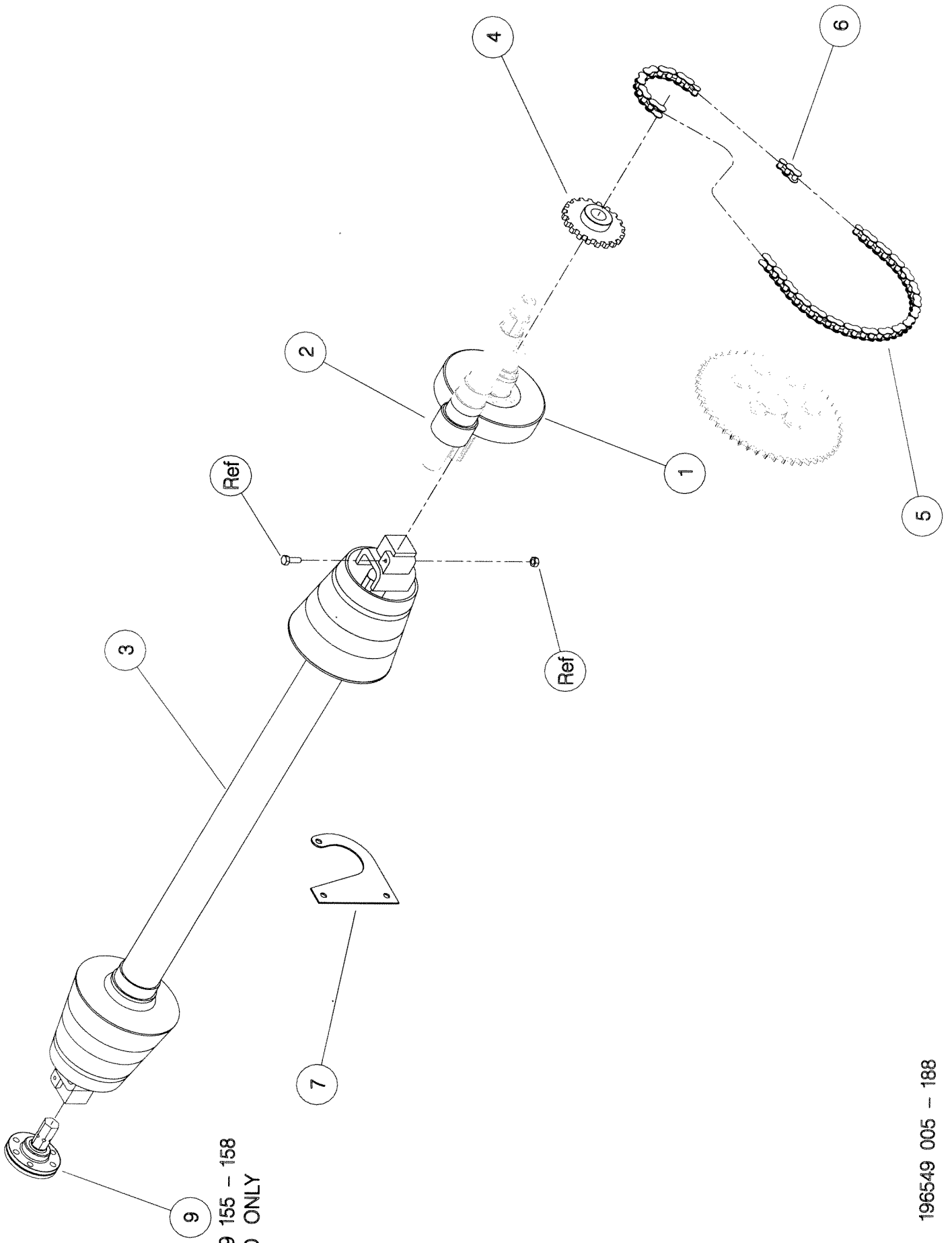
ASSY NUMBER: 196549 165		ASSY DESCRIPTION: DRIVE KIT DEUTZ-ALLIS C/RVs (18')					
ITEM	PART NO	DESCRIPTION	QTY	ITEM	PART NO	DESCRIPTION	QTY
1a OR 1b	192592 07 192592 11	INPUT GEAR (45t) WITH ROTOR GEARBOX INPUT GEAR (35t) WITHOUT ROTOR GEARBOX	1 1				
2a OR 2b	193599 07 193599 11	PINION (24t) WITH ROTOR GEARBOX PINION (34t) WITHOUT ROTOR GEARBOX	1 1				
3	PTO-26009	PTO	1				
3A 3B 3C 3D 3E 3F 4 5	PTO-00082 PTO-00083 PTO-00119 PTO-00093 BLTA10380 NUT-0265 192768 16 CHN-01920	PTO YOKE-COMBINE (SPARES) PTO CROSS BEARING (SPARES) PTO CLUTCH-HEADER (SPARES) PTO GUARD ASSY (SPARES) SHEARBOLT NYLOC NUT SPROCKET CHAIN (FIXED GEARBOX MACHINES)	1 A/R 1 1 A/R A/R 1 93				
OR 6 7	CHN-01920 KIT-00931	CHAIN (PIVOTING GEARBOX MACHINES) PTO SUPPORT KIT	101 1				

Shelbourne Reynolds Engineering Limited

ASSY NUMBER: 196549 166		ASSY DESCRIPTION: DRIVE KIT DEUTZ-ALLIS C/RVs (20')					
ITEM	PART NO	DESCRIPTION	QTY	ITEM	PART NO	DESCRIPTION	QTY
1a OR 1b	192592 07 192592 11	INPUT GEAR (45t) WITH ROTOR GEARBOX INPUT GEAR (35t) WITHOUT ROTOR GEARBOX	1 1				
2a OR 2b	193599 07 193599 11	PINION (24t) WITH ROTOR GEARBOX PINION (34t) WITHOUT ROTOR GEARBOX	1 1				
3	PTO-26010	PTO	1				
3A 3B 3C 3D 3E 3F	PTO-00082 PTO-00083 PTO-00119 PTO-00093 BLTA10380 NUT-0265	PTO YOKE-COMBINE (SPARES) PTO CROSS BEARING (SPARES) PTO CLUTCH-HEADER (SPARES) PTO GUARD ASSY (SPARES) SHEARBOLT NYLOC NUT	1 A/R 1 1 A/R A/R				
4 5	192768 16 CHN-01920	SPROCKET CHAIN (FIXED GEARBOX MACHINES)	1 93				
OR	CHN-01920	CHAIN (PIVOTING GEARBOX MACHINES)	101				
6 7	KIT-00931	PTO SUPPORT KIT	1				

Shelbourne Reynolds Engineering Limited

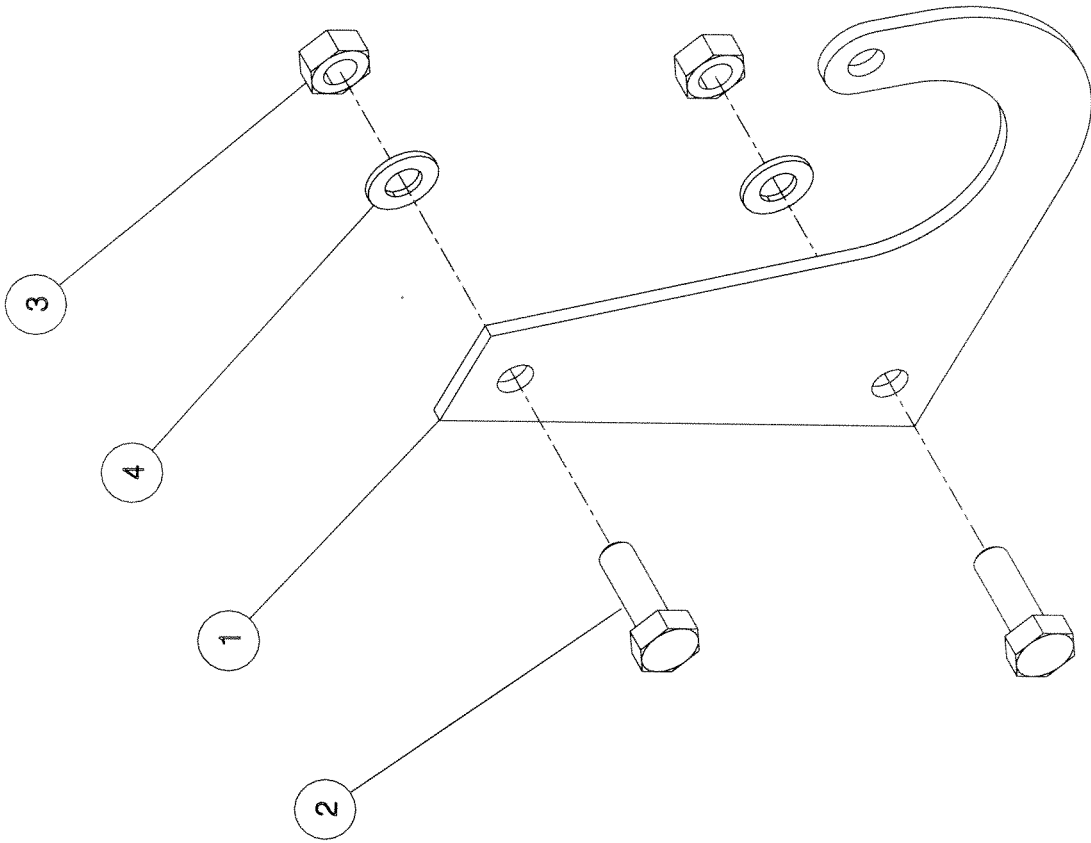
ASSY NUMBER: 196549 168		ASSY DESCRIPTION: DRIVE KIT DEUTZ-ALLIS C/RVs (22-32')					
ITEM	PART NO	DESCRIPTION	QTY	ITEM	PART NO	DESCRIPTION	QTY
1a OR 1b	192592 07 192592 11	INPUT GEAR (45t) WITH ROTOR GEARBOX INPUT GEAR (35t) WITHOUT ROTOR GEARBOX	1 1				
2a OR 2b	193599 07 193599 11	PINION (24t) WITH ROTOR GEARBOX PINION (34t) WITHOUT ROTOR GEARBOX	1 1				
3	PTO-26001	PTO	1				
3A 3B 3C 3D 3E 3F 4 5	PTO-00082 PTO-00083 PTO-00119 PTO-00093 BLTA10380 NUT-0265 192768 16 CHN-01920	PTO YOKE-COMBINE (SPARES) PTO CROSS BEARING (SPARES) PTO CLUTCH-HEADER (SPARES) PTO GUARD ASSY (SPARES) SHEARBOLT NYLOC NUT SPROCKET CHAIN (FIXED GEARBOX MACHINES)	1 A/R 1 1 A/R A/R 1 93				
OR	CHN-01920	CHAIN (PIVOTING GEARBOX MACHINES)	101				
6 7	KIT-00931	PTO SUPPORT KIT	1				



196549 155 - 158
JD ONLY

Shelbourne Reynolds Engineering Limited

KIT-00931		ASSY DESCRIPTION: PTO SUPPORT KIT					
ASSY NUMBER:							
ITEM	PART NO	DESCRIPTION	QTY	ITEM	PART NO	DESCRIPTION	QTY
1	191945 01	PTO SUPPORT	1				
2	HSS-0238	SET SCREW	2				
3	NUT-0269	NYLOC NUT	2				
4	WSH-0018	PLAIN WASHER	2				

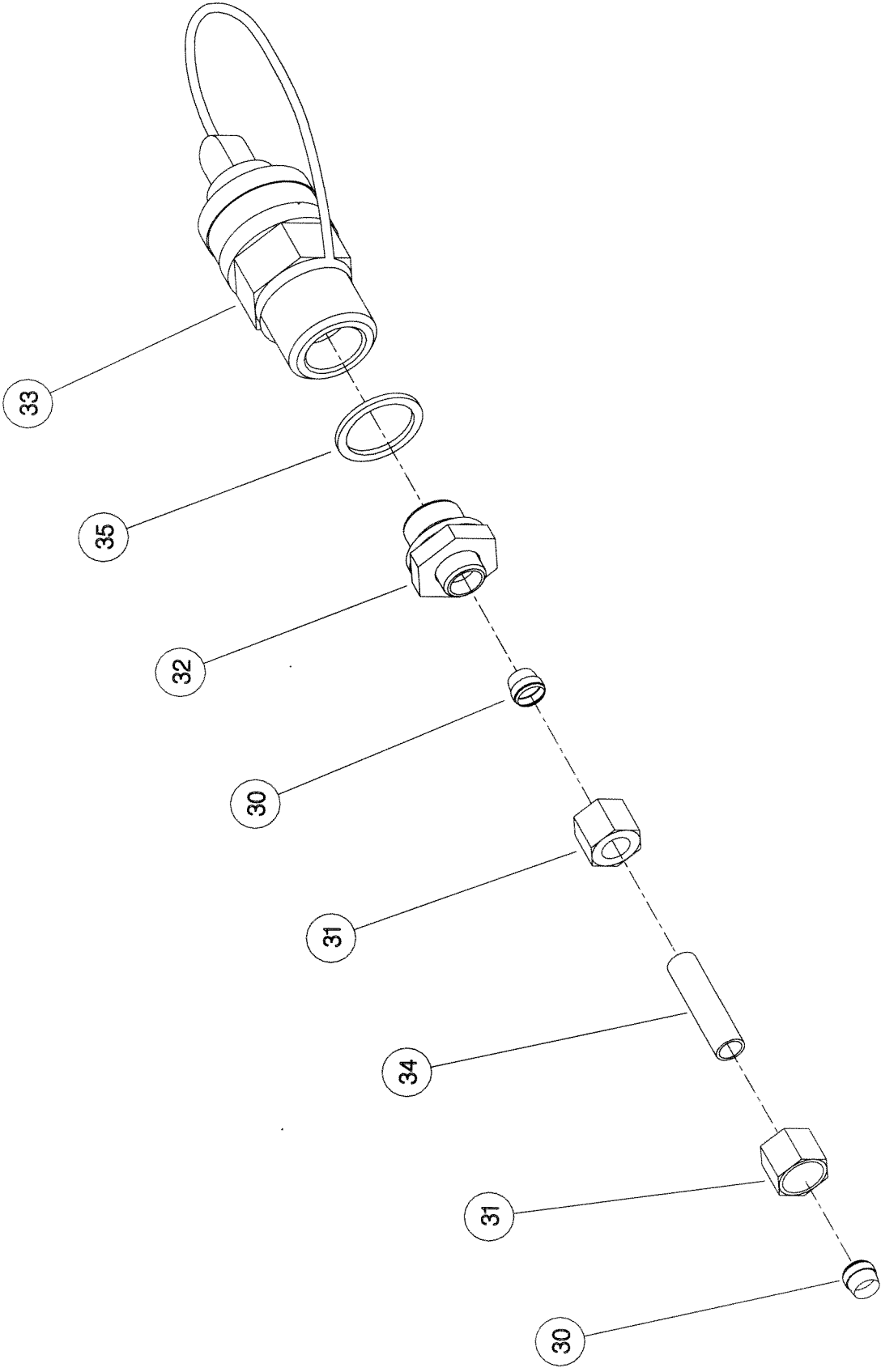


Shelbourne Header C/Rvs & Rsd Range

Hydraulic Kit

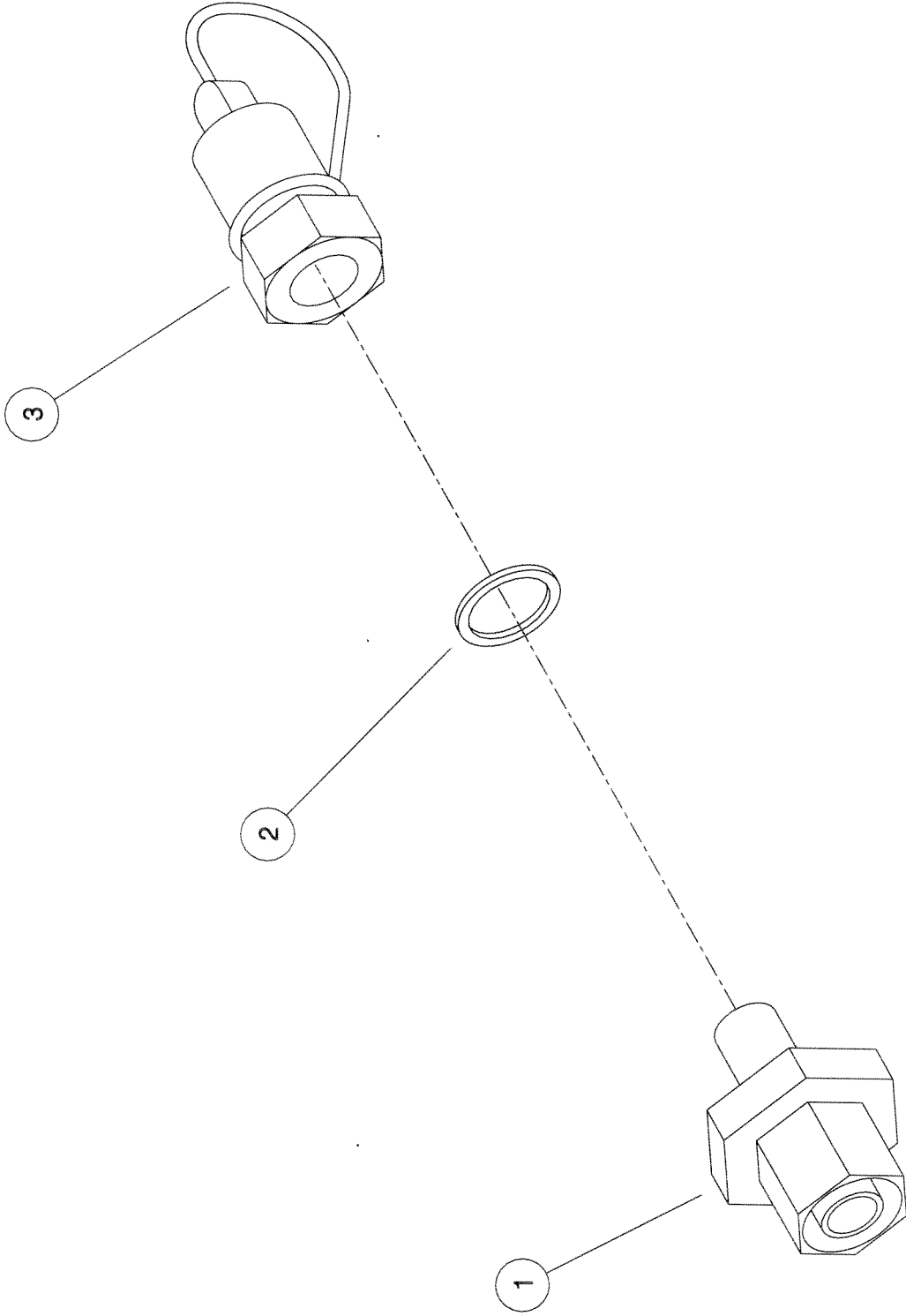
Shelbourne Reynolds Engineering Limited

ASSY NUMBER: KIT-01707		SUB ASSY DESCRIPTION: HYDRAULIC PROBE ADAPTOR					
ITEM	PART NO	DESCRIPTION	QTY	ITEM	PART NO	DESCRIPTION	QTY
30	FIT-0056	OLIVE	2				
31	FIT-0051	NUT	2				
32	FIT-0046	COUPLING	1				
33	COU-0128	PULL BRAKE COUPLING	1				
34	RP-100040	PIPE	1				
35	WSH-1015	DOWTY WASHER	1				



Shelbourne Reynolds Engineering Limited

ASSY NUMBER: KIT-01720		SUB ASSY DESCRIPTION: HYDRAULIC KIT (DEUTZ-ALLIS, GLEANER)					
ITEM	PART NO	DESCRIPTION	QTY	ITEM	PART NO	DESCRIPTION	QTY
1	FIT-0518	ADAPTOR	1				
2	WSH-1005	DOWTY WASHER	1				
3	HQR-00503	PROBE COUPLING	1				



Shelbourne Reynolds Engineering Limited

ASSY NUMBER:		KIT-01731				SUB ASSY DESCRIPTION: HYDRAULIC KIT AGCO MULTICOUPLER		
ITEM	PART NO	DESCRIPTION	QTY	ITEM	PART NO	DESCRIPTION	QTY	
1	197812 01	ELECTRICAL/HYD ADAPTOR	1					
2	198278 01	LOOM & PLUG ASSY	1					
3	CIR-0450	CIRCLIP	1					
4	HQR-13026	COUPLING	1					
5	CLP-00230	SNAP RING	1					
6	HAAAK0327	HYD ADAPTOR	1					
7	HHAC12010	HYD HOSE ASSY	1					
8	197766 01	PARKING BRACKET	1					
9	HSS-0238	SETSCREW	2					
10	WSH-0018	WASHER	2					
11	NUT-0269	NYLOC NUT	2					
12	197248 01	LOCATING BOSS	2					
13	SCW-0190	SCREW CAP HEAD	2					
14								

