

Fitting Instructions

ISSUE	DATE	CHANGES
1	20/05/2025	Fitting instructions created

This kit will fit to all non-rotor gearbox CVS & RVS machines from 2001 to 2017. They must already have been fitted with bolt in hub front and rear pulleys, except a limited number of pre-production CVS machines in 2009 & 2010 which had a pivoting gearbox.



Safety Warning

These Fitting Instructions are for informational purposes only. Shelbourne Reynolds makes no representation or warranty, express or implied, regarding the information provided herein. Under no circumstances will Shelbourne Reynolds have any liability to you for any loss or damage resulting from the use of these instructions or reliance on any information provided. It is extremely dangerous to carry out any work on a machine while it is under power. Never remove or reattach any parts unless the machine is fully turned off and disengaged.

Please read all safety instructions contained in your operators manual and observe all safety signs attached to the Stripper Header. Your use of these instructions is solely at your own risk. Please use proper safety equipment at all times.



Refer to the Operators Manual for additional information and Safety Procedures. If you don't have an operators manual they are available to download from the support section of our website.

These instructions are worded if the kit was being installed while the header is mounted on a combine, to have the stripping rotor set in the slowest position and implement the safe stop procedure.

If not the pulley drive and actuator may need rotating and cycling to assist.

Recommended Tools List

Sockets And Wrench

10mm, 13mm,
15mm, 17mm, &
19mm Socket/wrench
24mm Socket (for ½" Impact)
30mm Socket/wrench

Drill & Drill Bits

4.5mm or 3/16"
9mm or 11/32"
9.5mm or 3/8"
12.5mm or 31/64"
13mm or 1/2"

Grinder & Discs

Sanding discs
Grinding discs
Cutting discs

Other Tools

3mm & 6mm Allen key
Punch
Hammer
Pliers

Scan QR
for online
instructions



Consumables

Tie wraps
Anti seize grease
Threadlocker
Blue (Shelbourne) touch up paint
Molybdenum grease (black grease)

1. Remove entire LH end guard and LH divider but retain LH divider as it will be reused. Remove VS pulleys, tie rod, actuator and cams. Retain only the pulley hubs.



Take care when removing the pulleys from the shafts, as they weigh 40KG (88lbs).



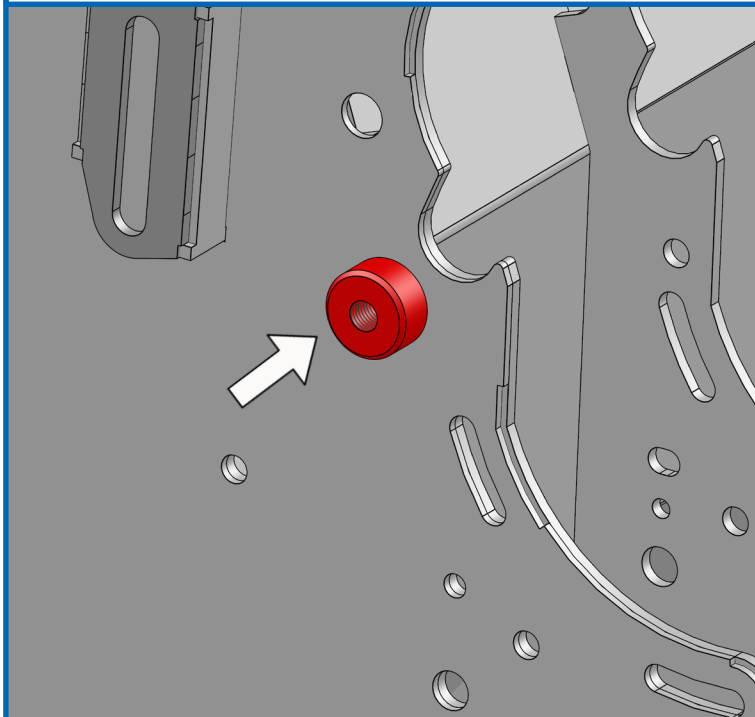
Take care when removing the gearbox.

2. Remove the rear drive shaft and guard along with the gearbox and retain these.

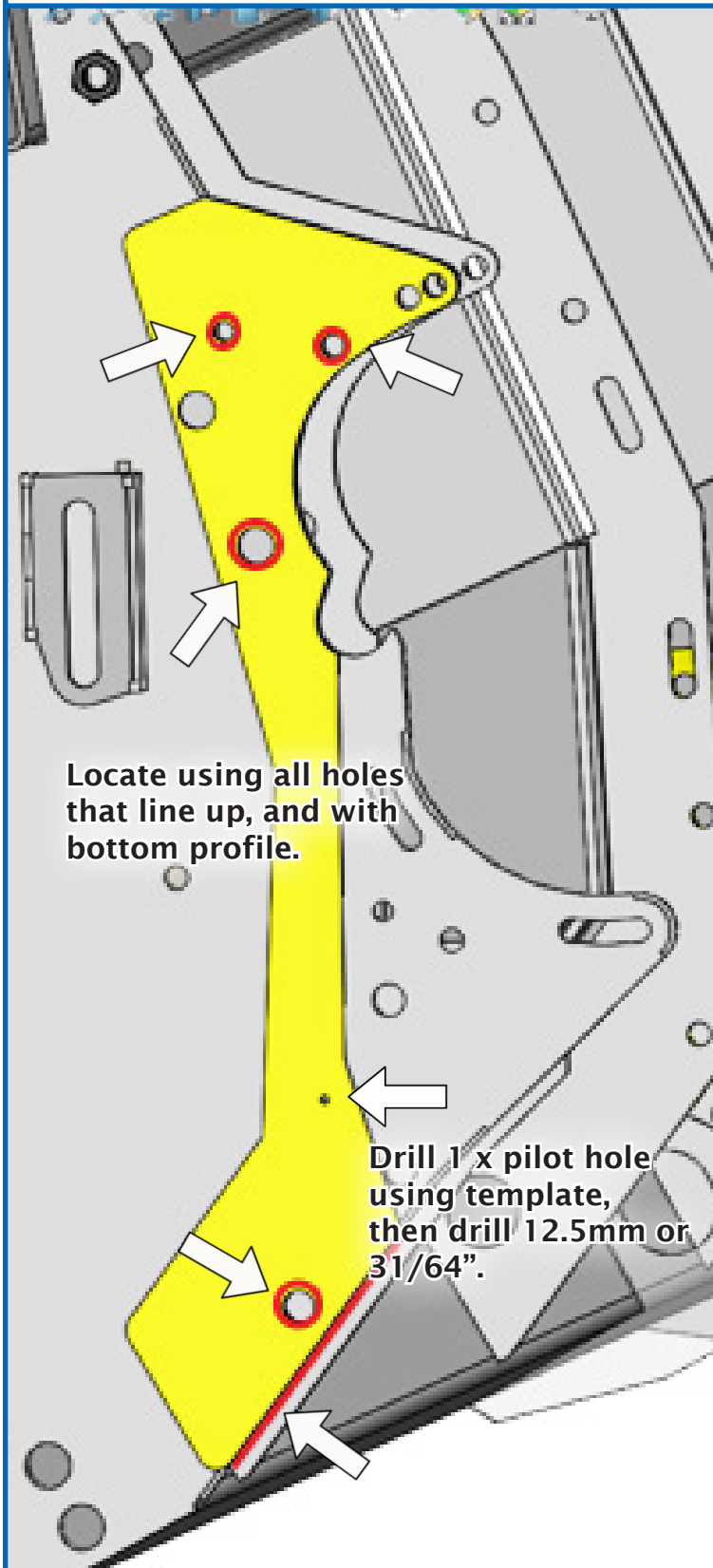


Stripper Header CVS & RVS

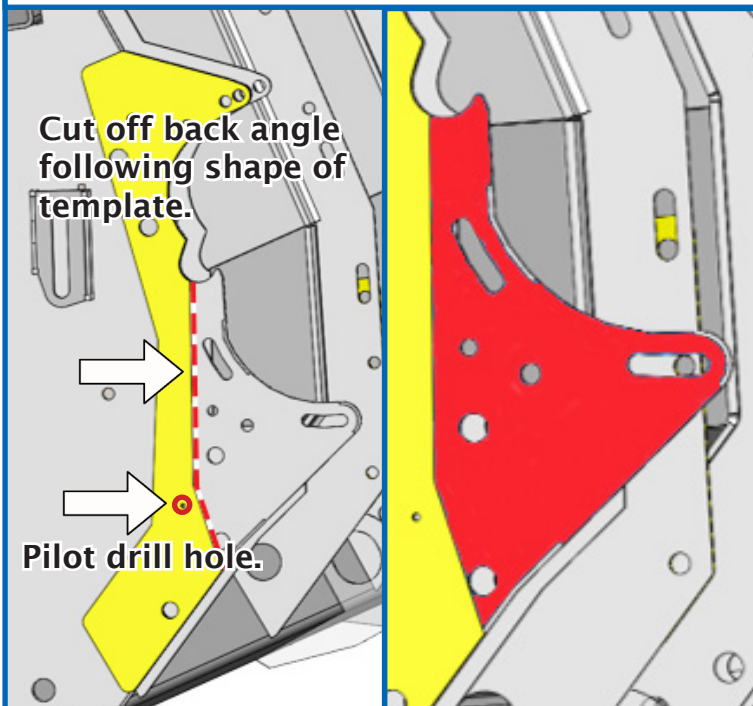
3. Remove the fixed chain idler and retain as this will be reused. Cut off the fixed idler boss and discard. Touch up the paint prior to reassembly.



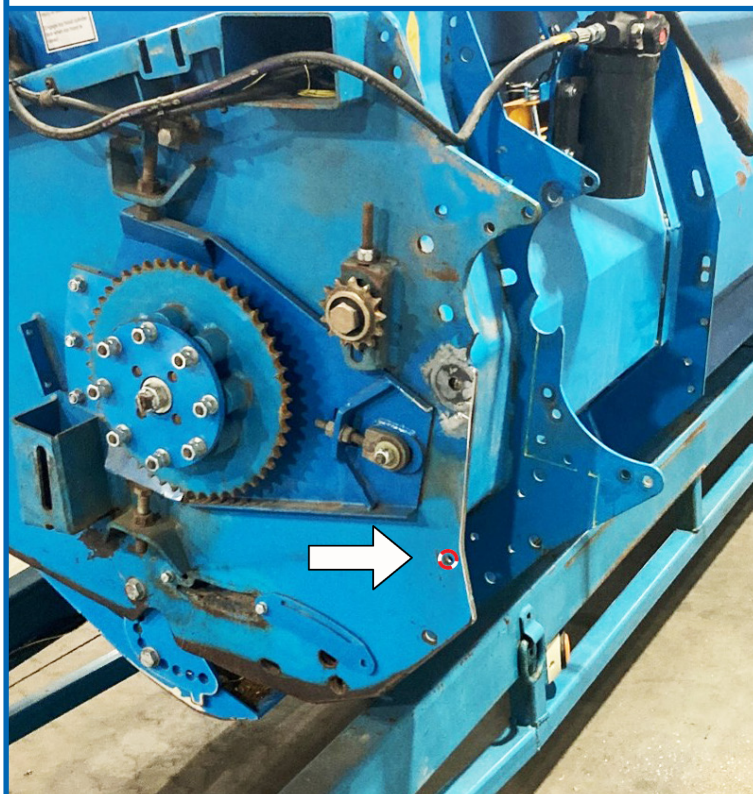
4. Bolt on template 290332 01 using as many fixings as will fit (10, 12 and 16mm fasteners.) Pilot drill the marked hole with a close-fitting drill bit.



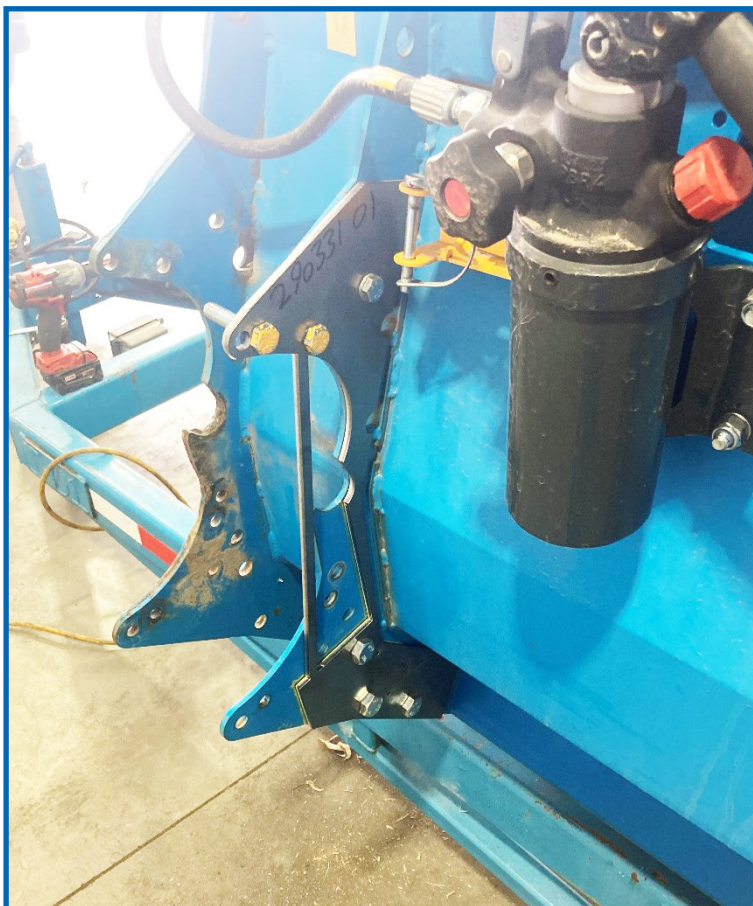
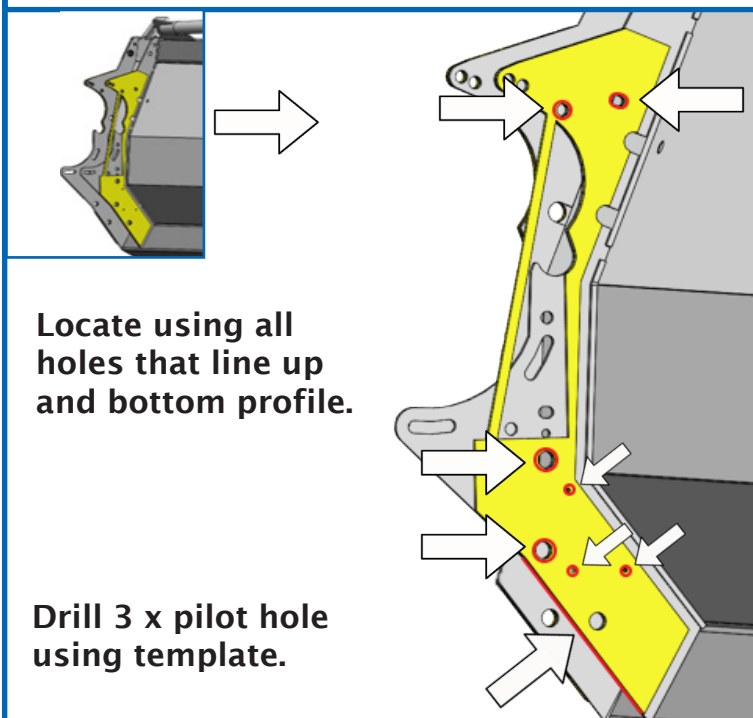
5. Using the template, mark along the back edge and remove the rear outer profile as shown, dressing the edges and painting prior to reassembly. Pilot drill hole.



6. When the template is removed expand the pilot-drilled hole to 12.5mm or 31/64".



7. Bolt template 290331 01, onto the second rear inner profile similar to the previous steps, using as many fixings as possible. As before, pilot drill the marked locations.

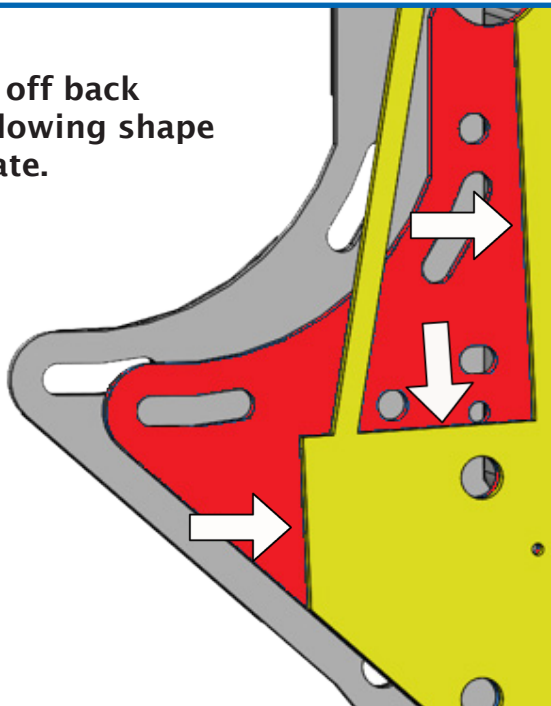


Stripper Header CVS & RVS

KIT-01488, KIT-01489, KIT-01490 &
KIT-01491 (2004 to 2017)

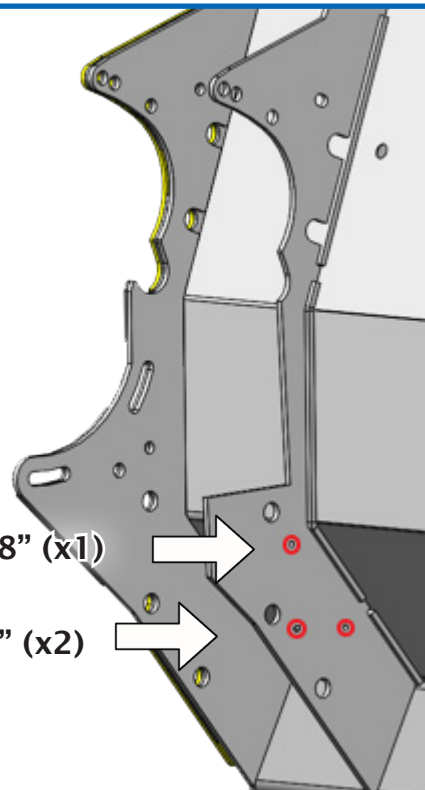
8. Using the template, mark along the back edge and remove the rear profile, as shown, dressing the edges and painting prior to reassembly.

Then cut off back angle following shape of template.



9. When the template is removed expand the pilot drilled holes to 12.5mm or 31/64".

9.5mm or 3/8" (x1)
12.5mm or 31/64" (x2)



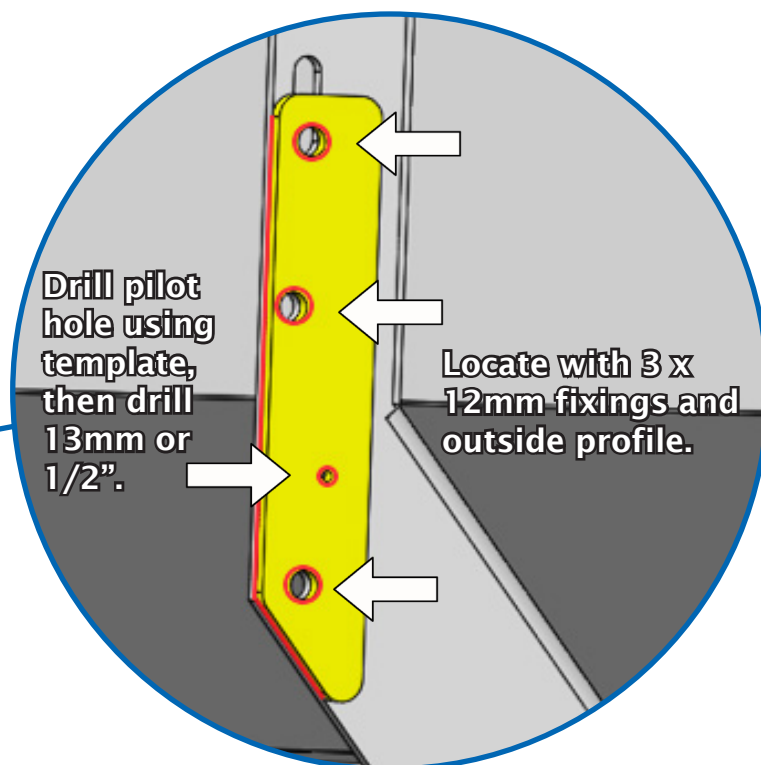
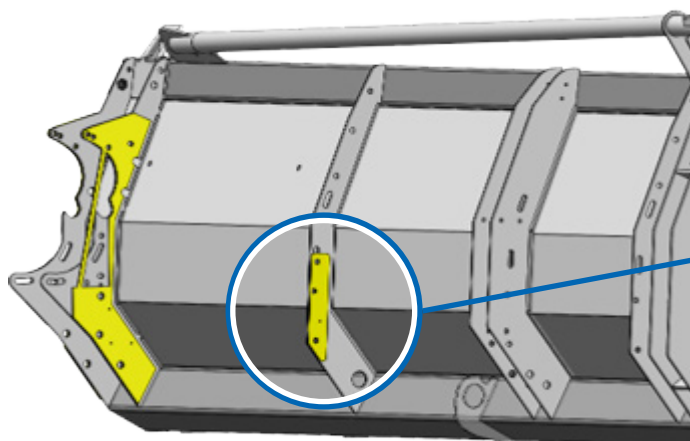
Note: Rear back angles after modifications have been made.



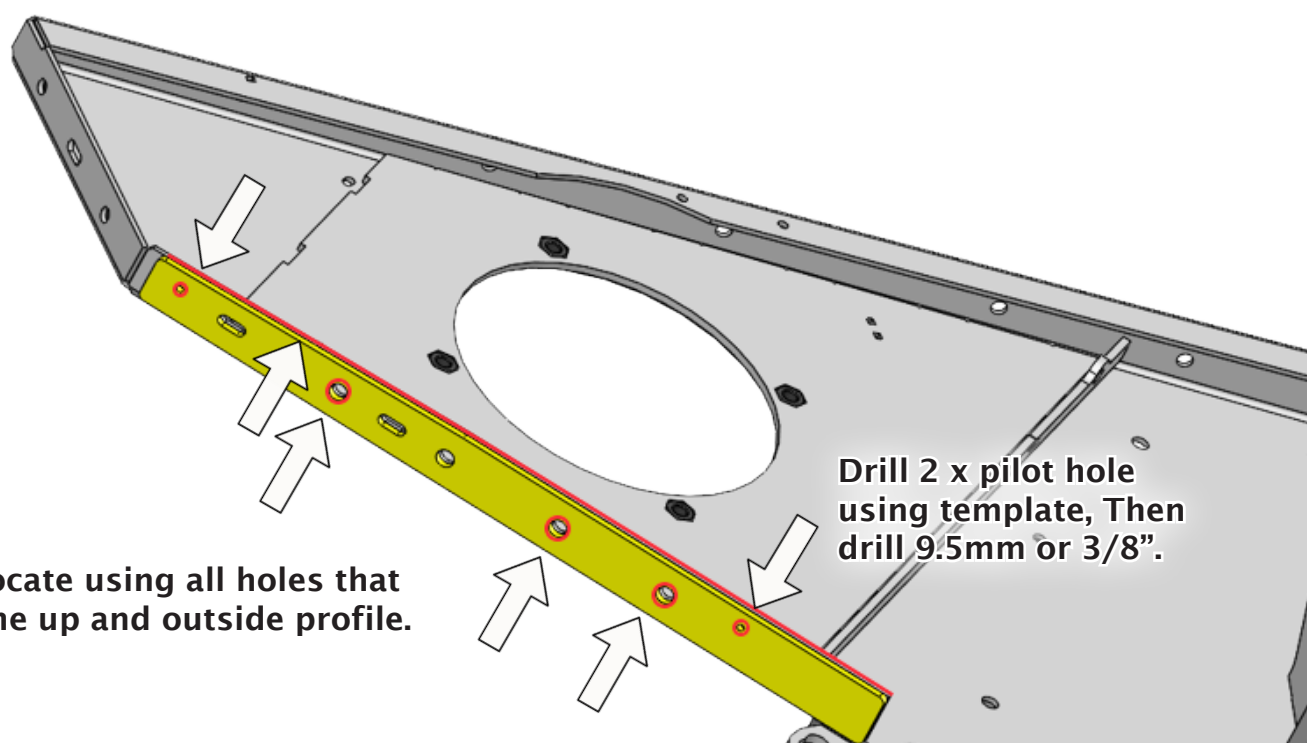
Note: Rear back angles after modifications have been made.



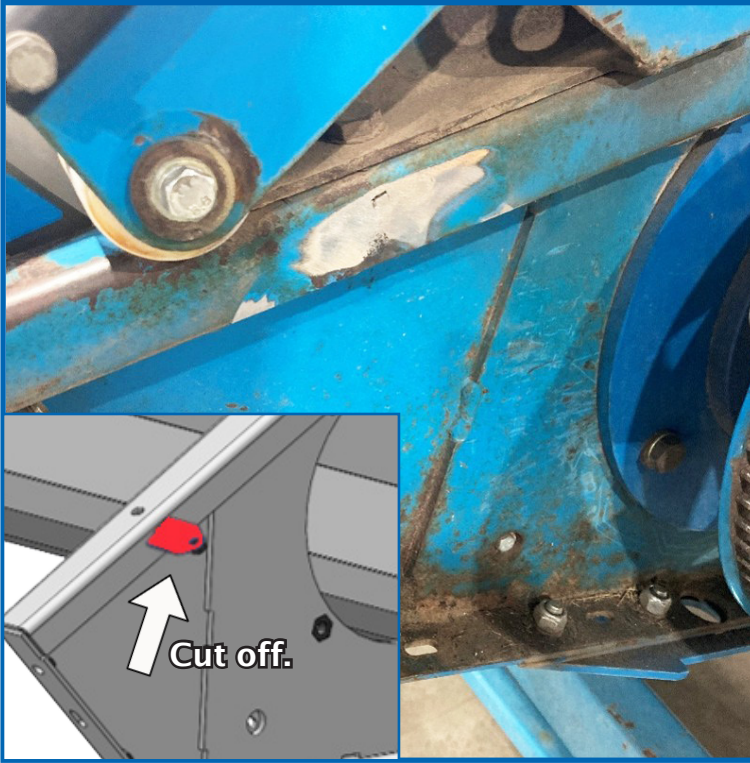
10. Using template 293012 01, drill a 13mm or ½" hole as shown below to relocate the drive shaft support bearing into the lower position.



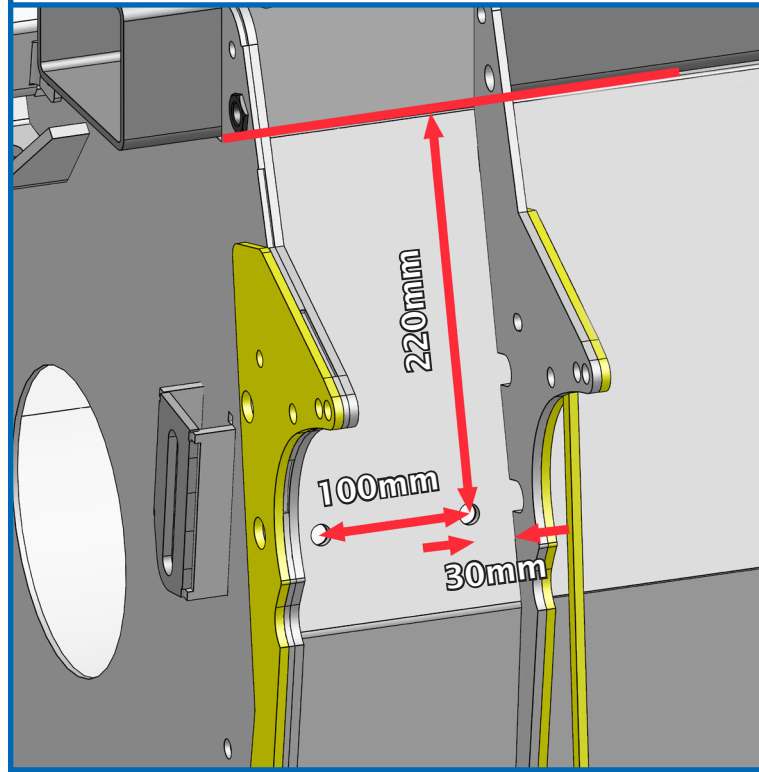
11. Remove the header stand mount from the underside and fit template 291993 01 in its place using as many fixings as possible. Drill the holes as shown below, then remove the template and refit the removed stand mount.



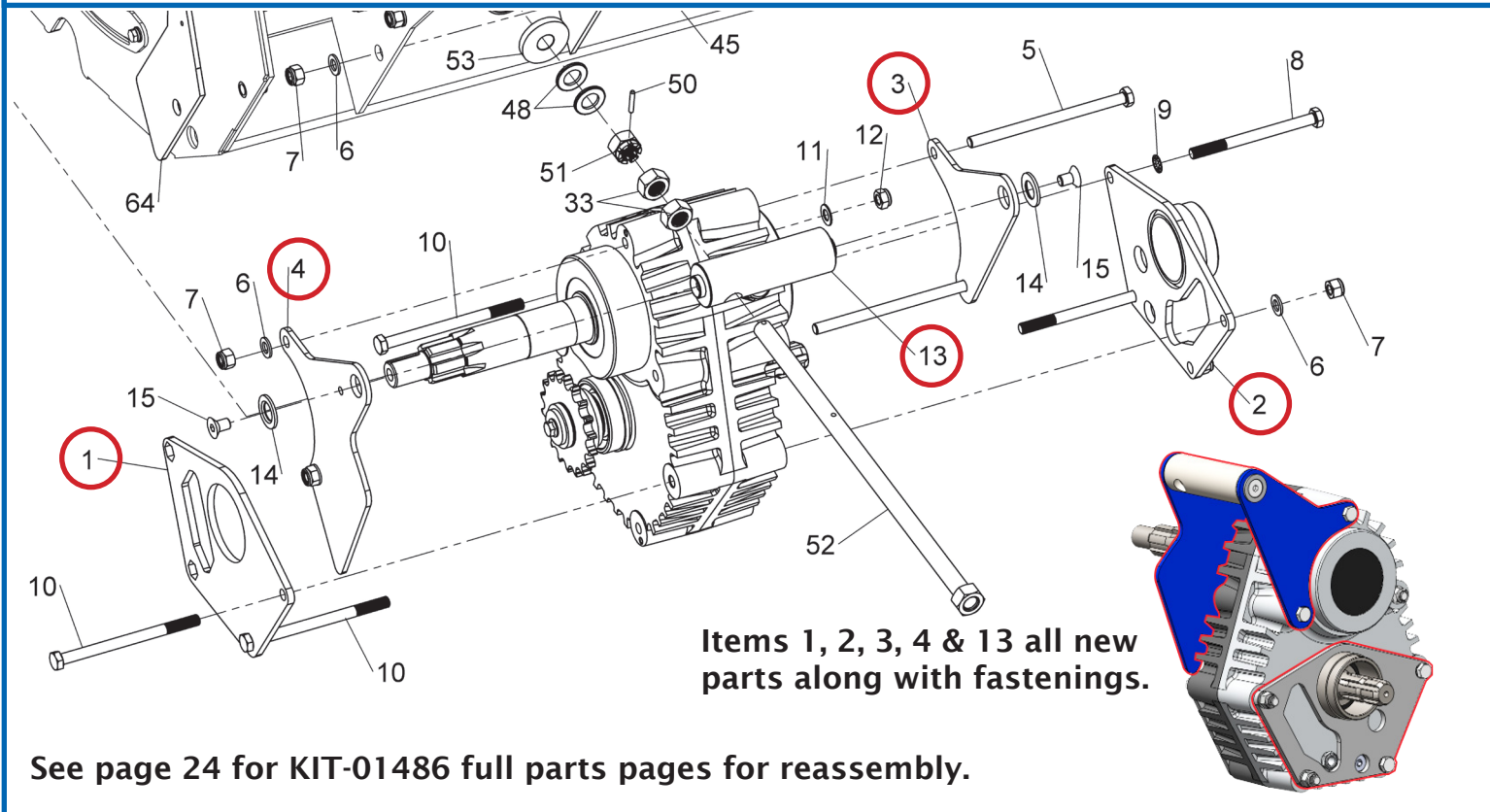
12. Prior to reassembly the lug for mounting the guard and welded nut must be cut off, ground flush, and painted prior to reassembly.



13. 2 x 9mm or 11/32" holes need to be drilled to accommodate the infill plate above the gearbox.



14. To allow the gearbox to pivot, new bolts and bracketry must be fitted as shown below.

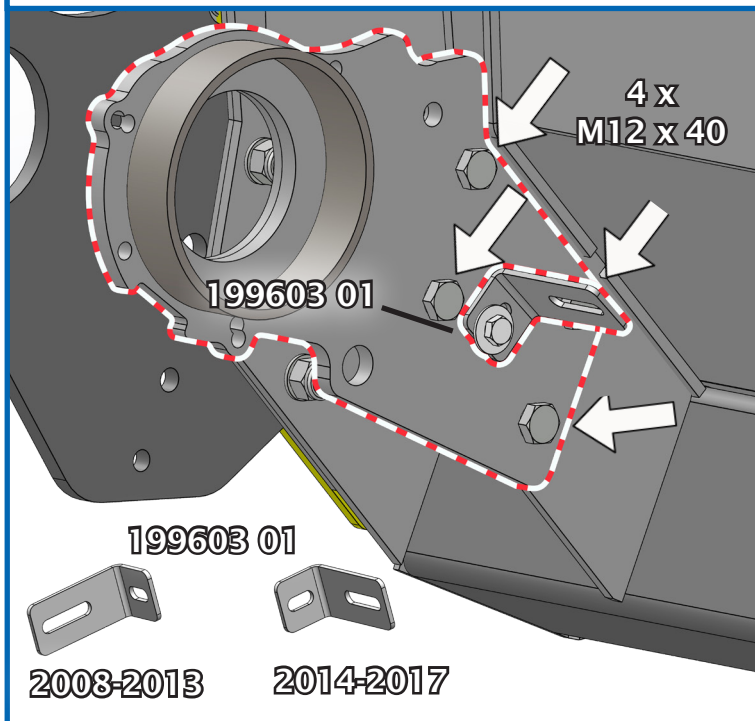


See page 24 for KIT-01486 full parts pages for reassembly.

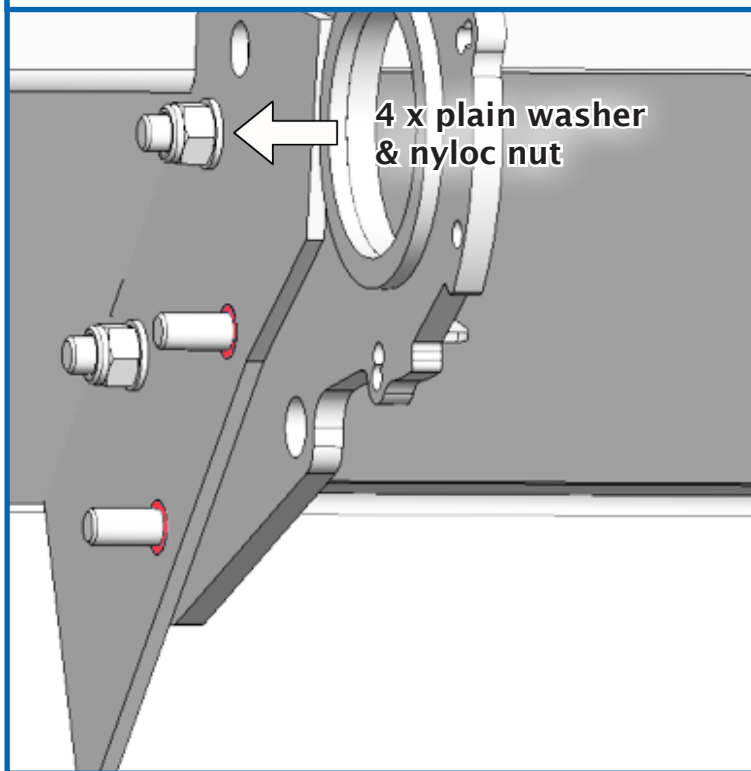
Stripper Header CVS & RVS

KIT-01488, KIT-01489, KIT-01490 &
KIT-01491 (2004 to 2017)

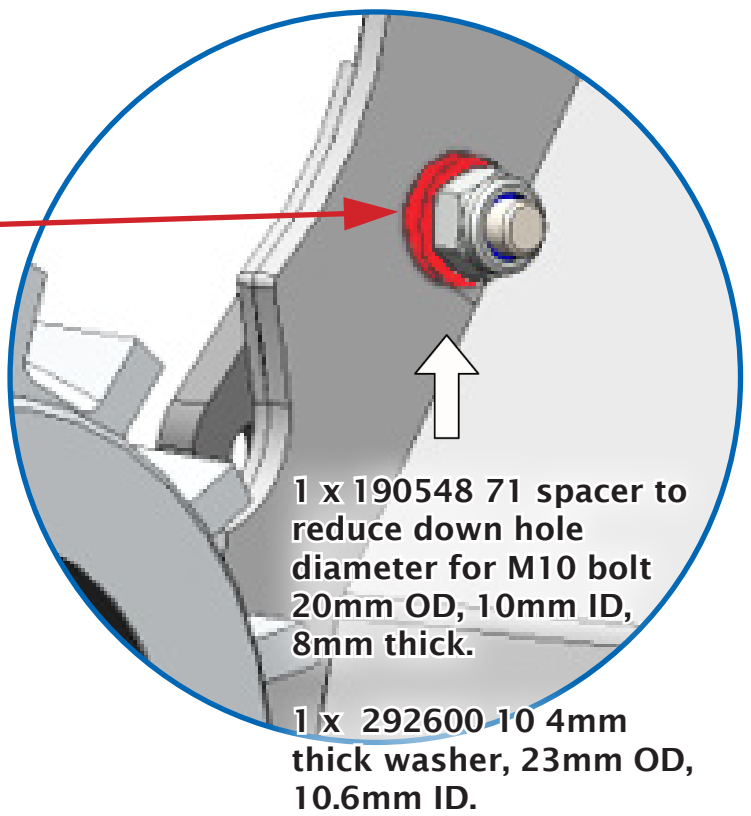
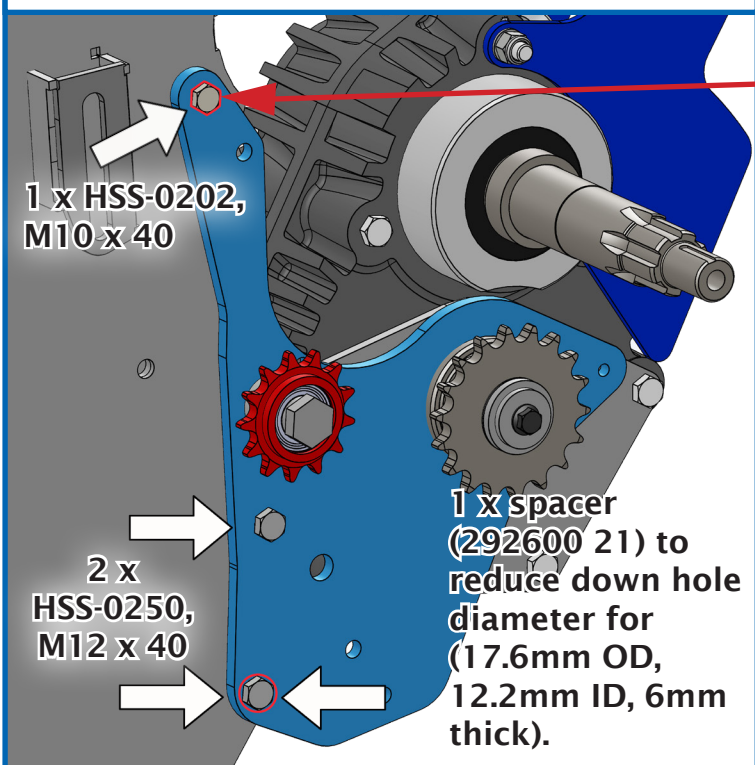
15. Fit new pivot plate 293842 01, to inner back angle using 4 x M12 x 40 bolts (HSS-0250). Fit L bracket 199603 01 (2008-2017), to new pivot plate.



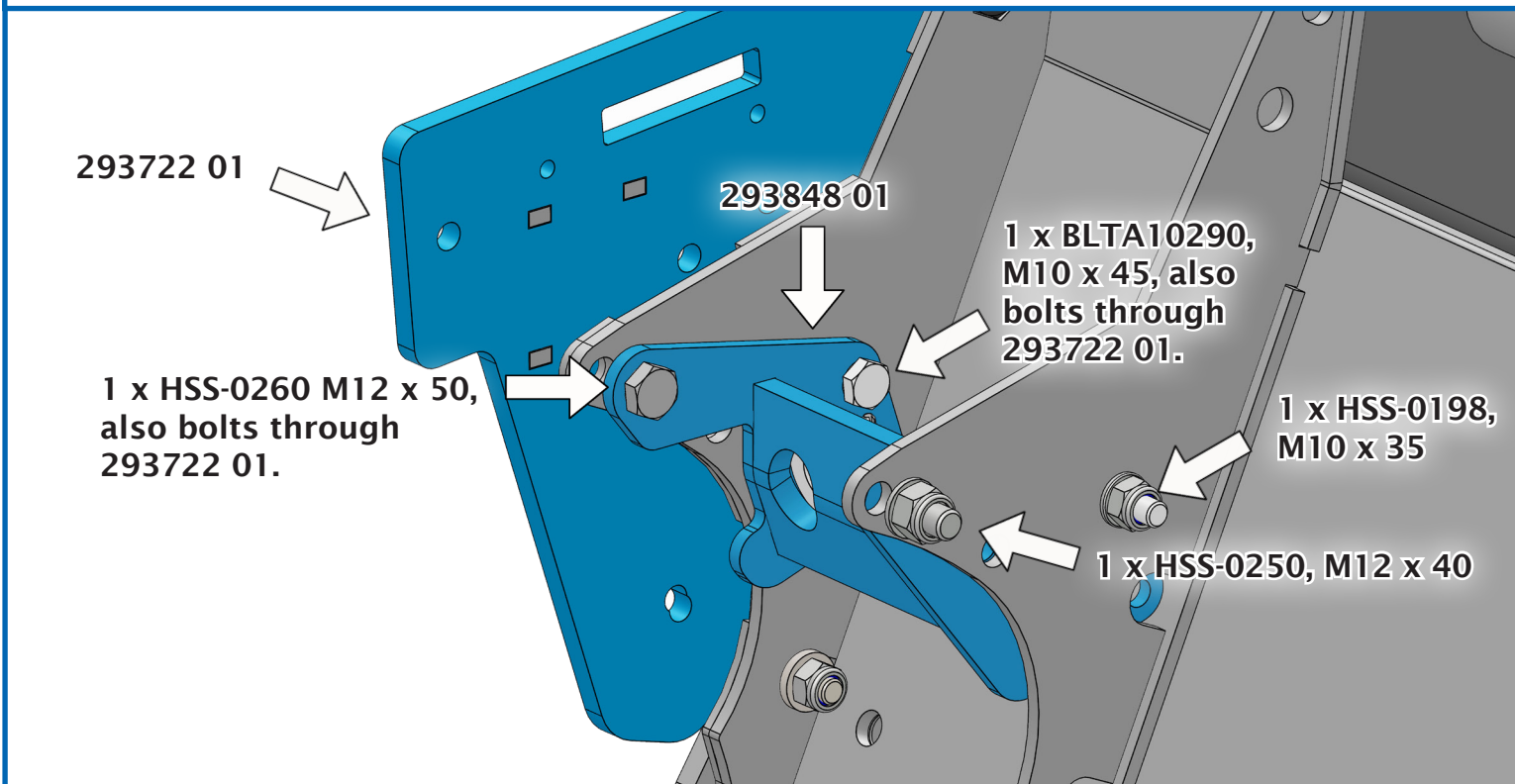
16. 2 x 292600 21, spacers to reduce down hole diameter for M12 bolt 17.6mm OD, 12.2mm ID, 6mm thick.



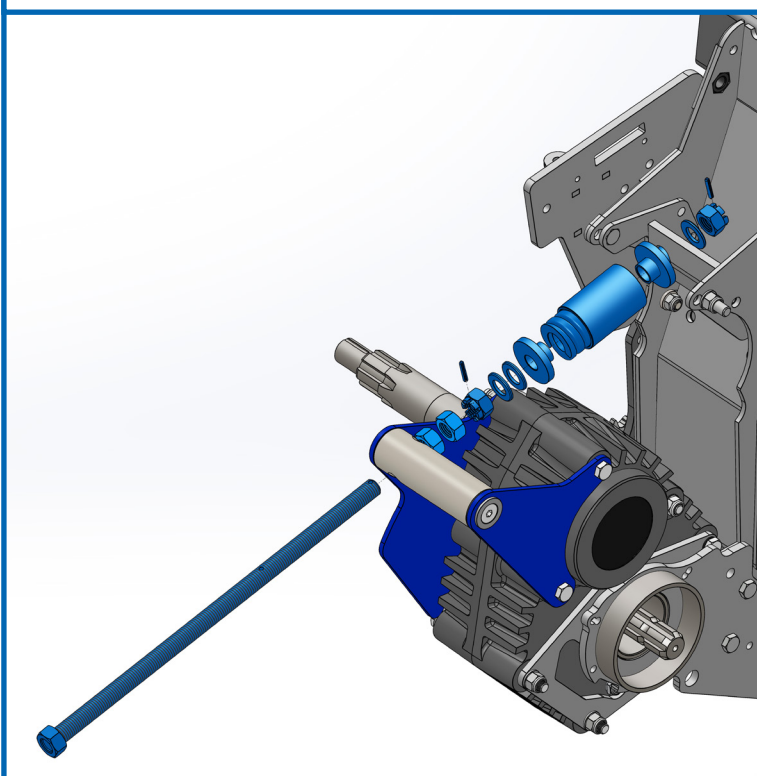
17. Refit gearbox and secure with new part 293844 01, to outer back angle. Refit idler sprocket.



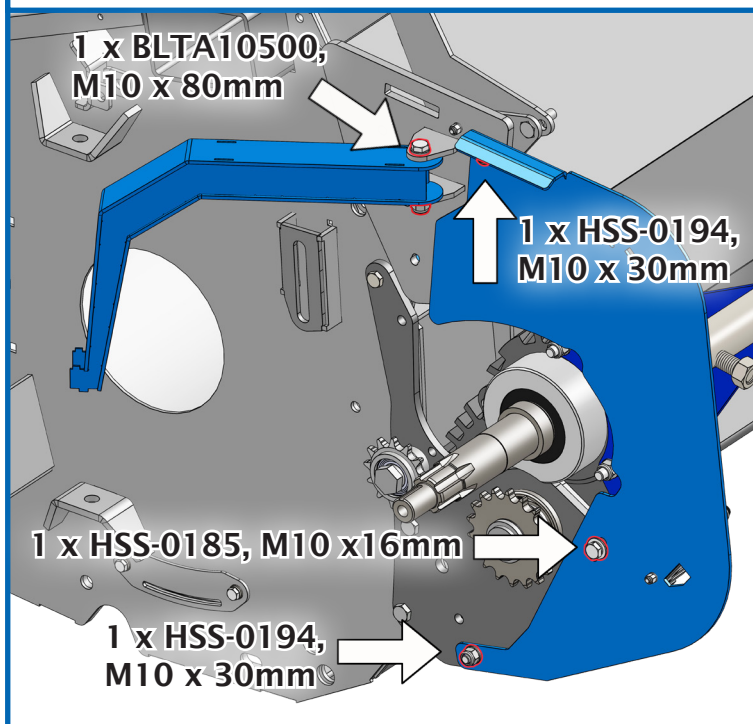
18. Fit new part 293722 01 (from KIT-01487), to top of outer back angle. Fit new part 293848 01 between inner and outer back angles.



19. Secure gearbox from rotating by fitting the gearbox adjuster and spring tensioner.



20. Fit the guard mounting plate and arm, using 2 x HSS-0194 (M10 x 30mm), 1 x BLTA10500 (M10 x 80mm), and 1 x HSS-0185 (M10 x 16mm).

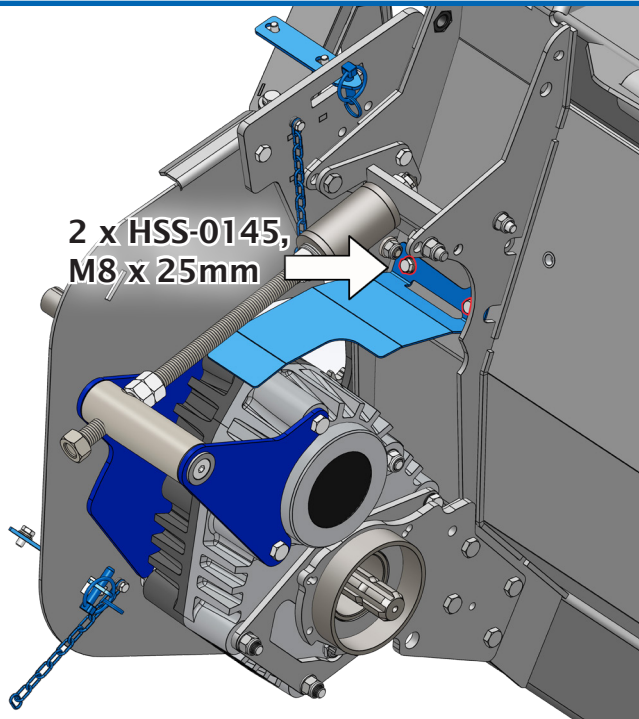


Stripper Header CVS & RVS

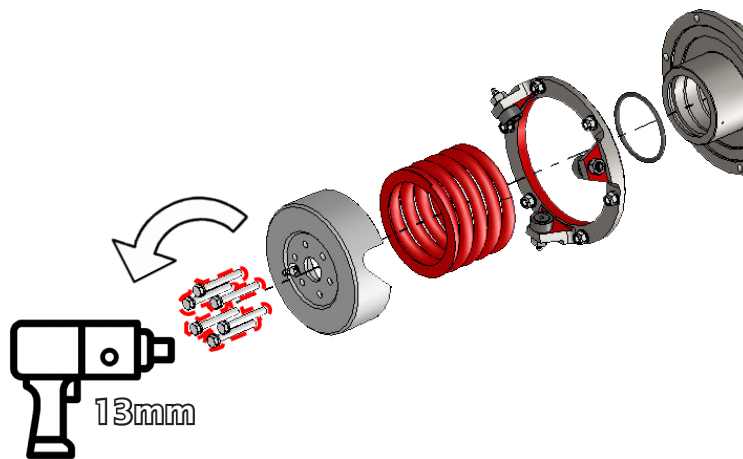
KIT-01488, KIT-01489, KIT-01490 &
KIT-01491 (2004 to 2017)

21. Fit the gearbox cover plate with 2 x HSS-0145 (M8 x 25mm) bolts, along with the locating plates, chains and lynch pins. (See KIT-01487, page 26).

2 x HSS-0145,
M8 x 25mm

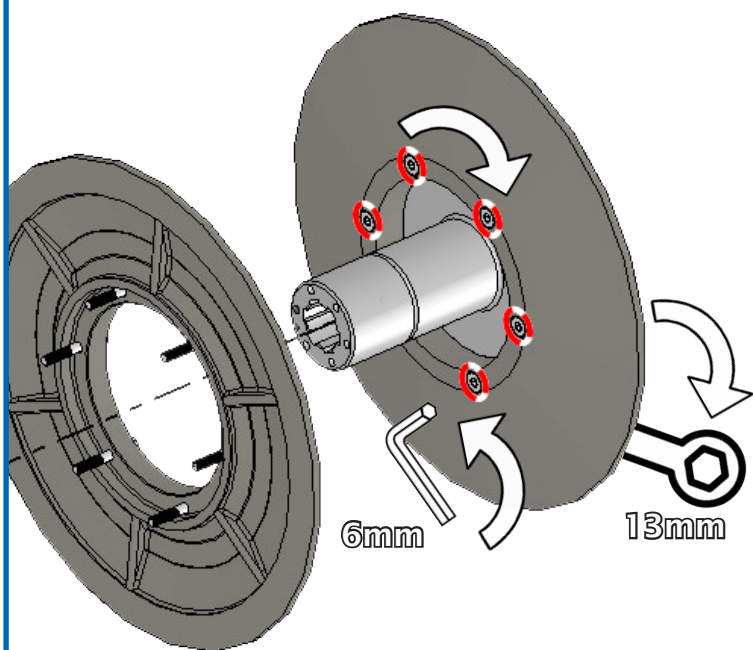


22. Disassemble the front pulley. Loosen the 6 x M8 fasteners slowly in rotation to keep spring tension even.

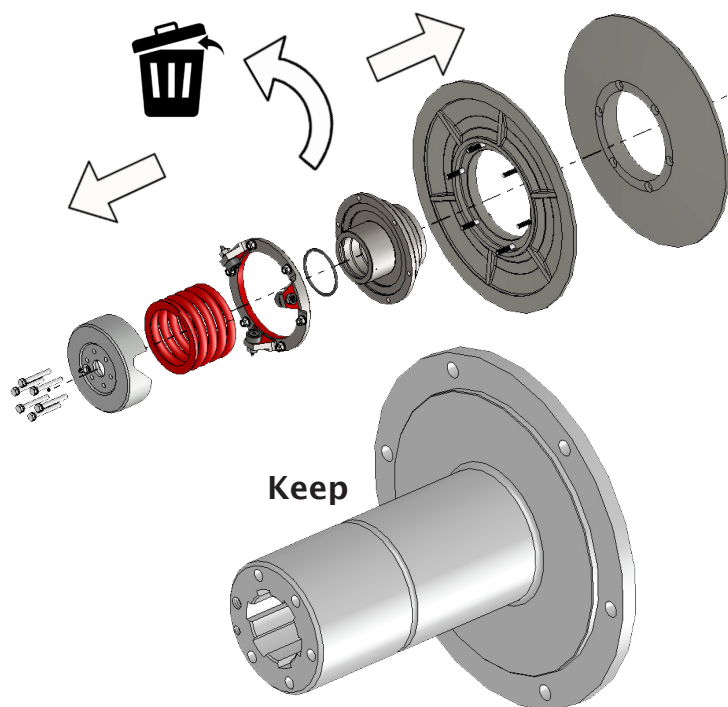


Release the spring tension slowly, ensure not to have all the spring load on one bolt.

23. Separate the pulley and centre hub.



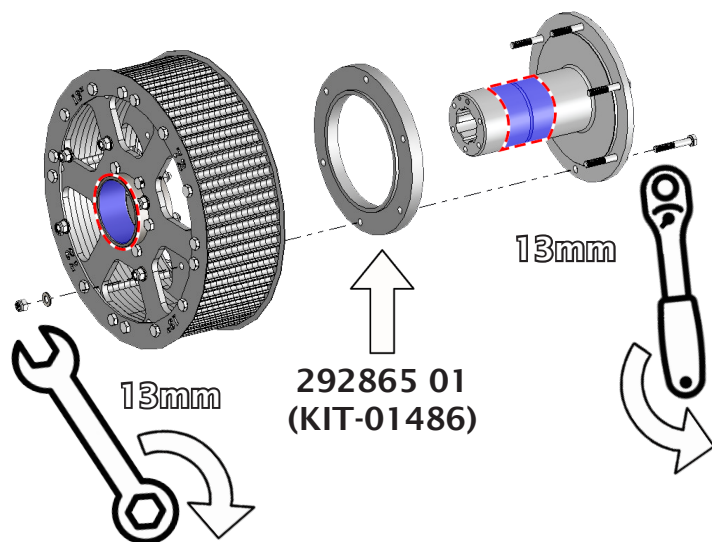
24. Keep the fixed hub for installation in the new pulley. All other components can be discarded.



Stripper Header CVS & RVS

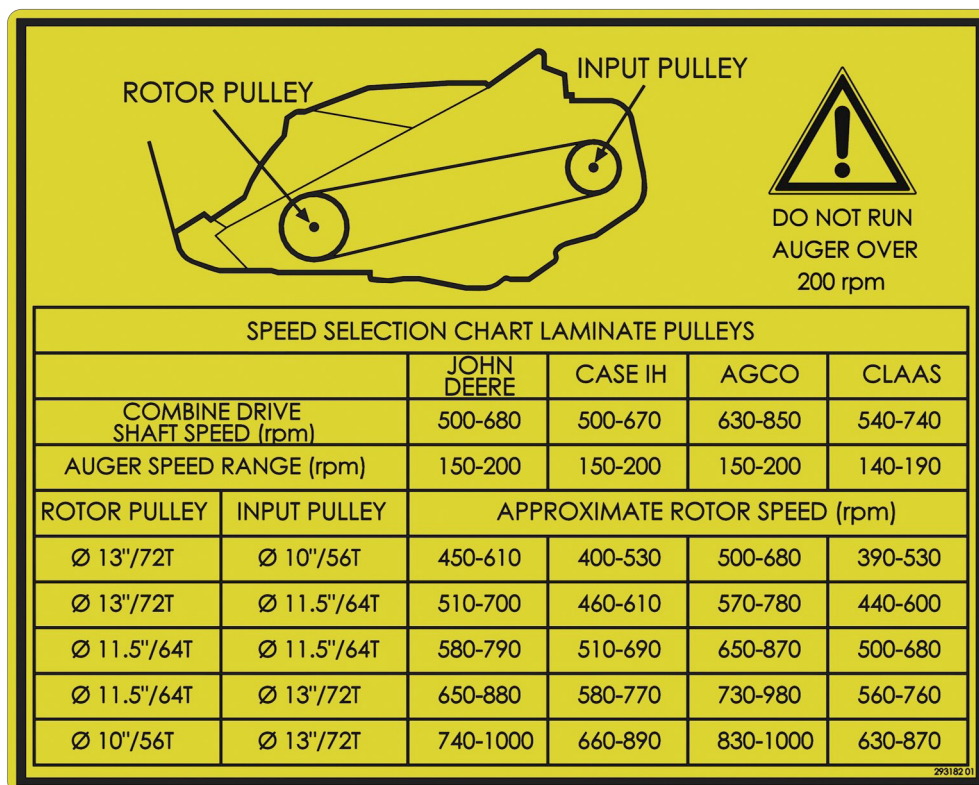
KIT-01488, KIT-01489, KIT-01490 &
KIT-01491 (2004 to 2017)

25 Check wear on pulley hub. Ensure that fitment of laminate pulley onto hub (shaded region), has little to no side play ($<0.8\text{mm}$ or $(1/32")$) before bolting together.



Refer to the speed chart to determine what pulley size to install on the front hub.

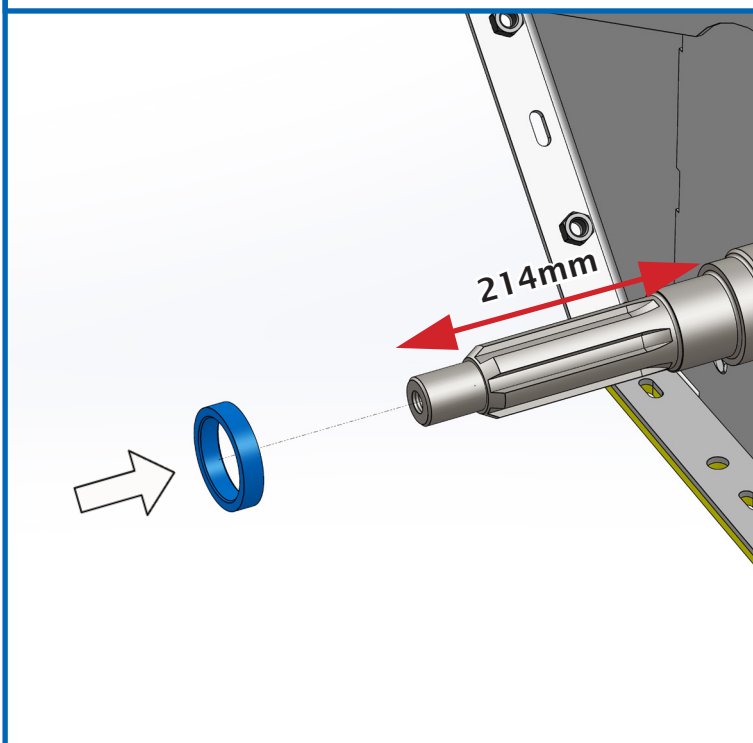
Speed range decal. Use this as a guide for the speed ranges you are looking to achieve.



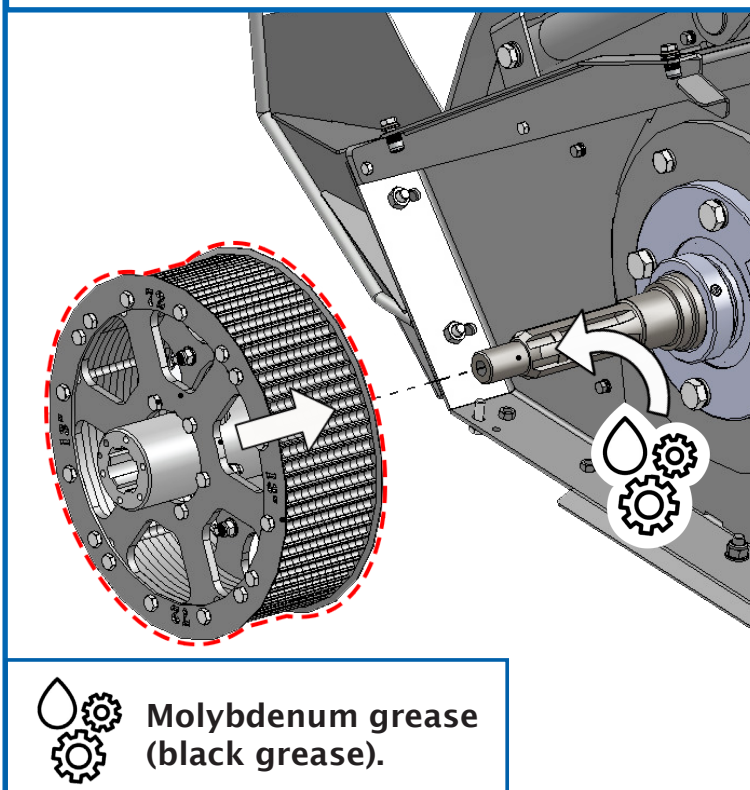
Stripper Header CVS & RVS

KIT-01488, KIT-01489, KIT-01490 &
KIT-01491 (2004 to 2017)

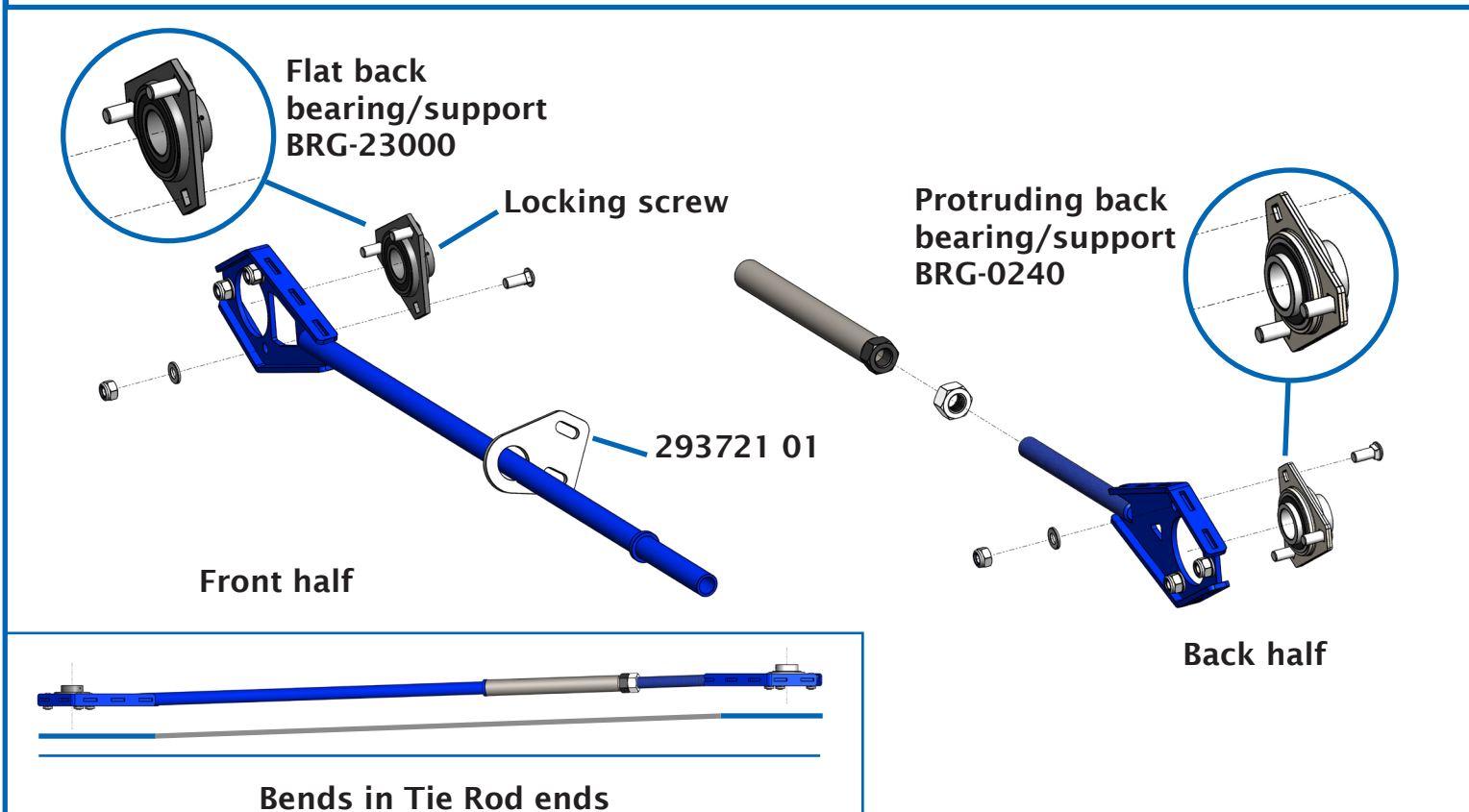
26. Fit spacer 197487 01 on shaft if it measures 214mm or 8 & 27/64". If shaft measures 201mm do not fit spacer.



27. Grease the shaft using black grease and then push on the new front pulley.



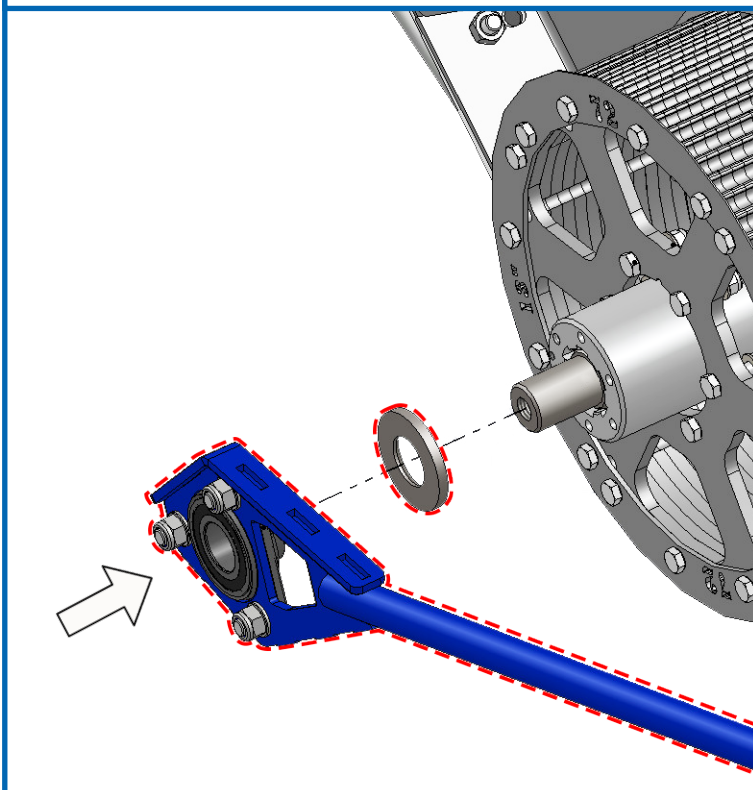
28. Sub up the two halves of the Tie Rod, front and back.



Stripper Header CVS & RVS

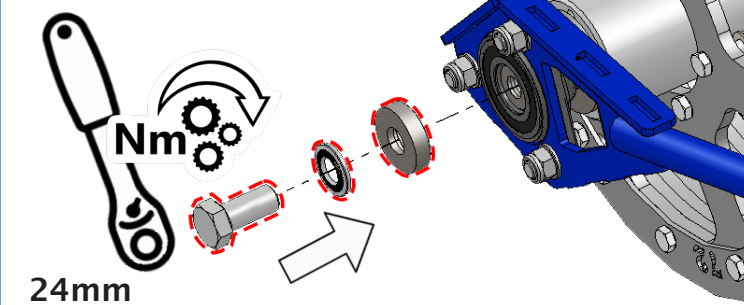
KIT-01488, KIT-01489, KIT-01490 &
KIT-01491 (2004 to 2017)

29. Add the washer (292600 23) and half of the tie rod onto the shaft.



30. Fasten with the **NEW** M16 set screw, lockwasher and washer. Tighten to 225Nm (166lbf.ft). The pulley should be held tight on the shaft, with no end float of pulley on the shaft.

Use new fasteners.



Torque to
225 Nm

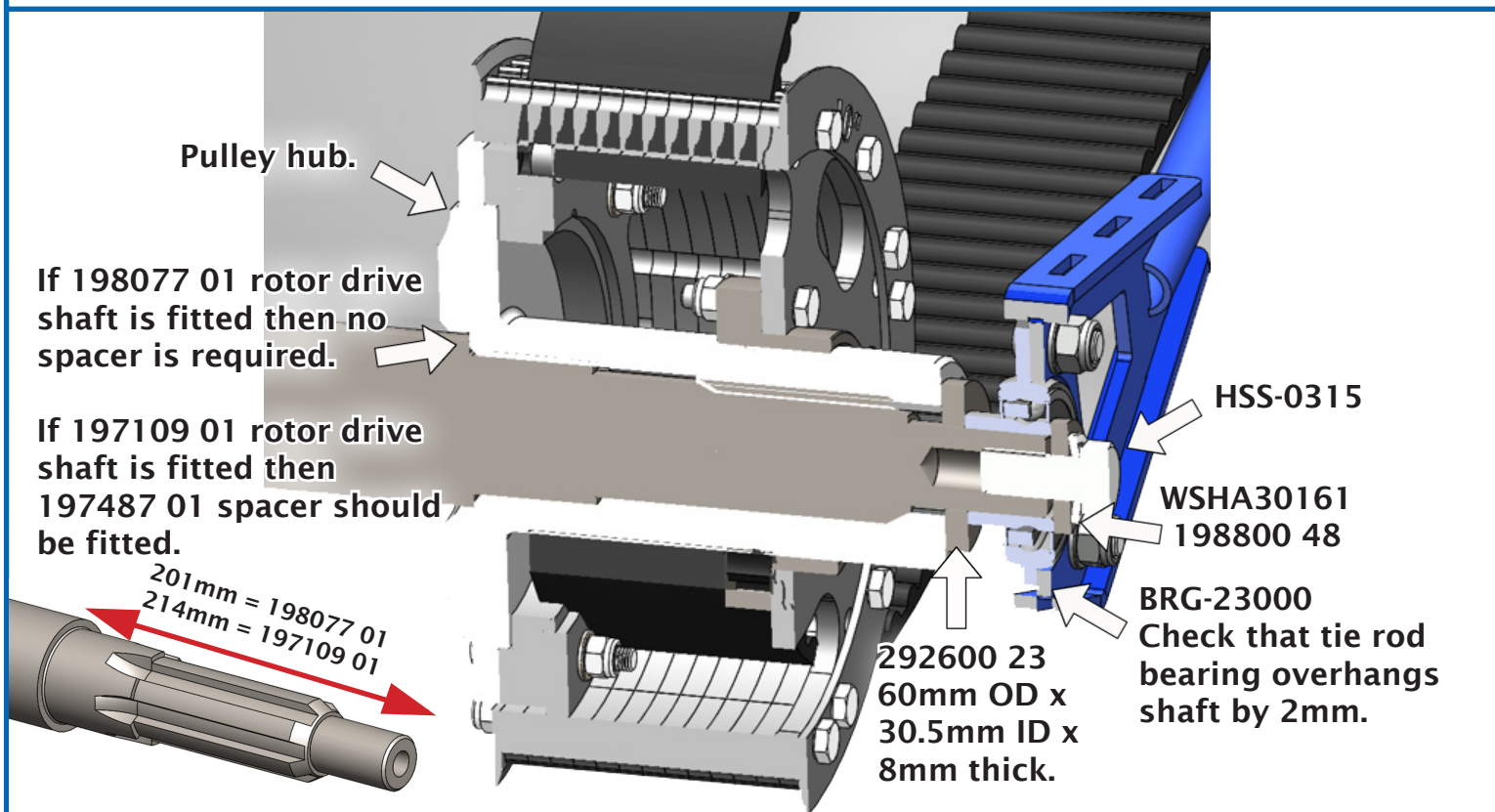
31. Rotor Pulley.

Pulley hub.

If 198077 01 rotor drive shaft is fitted then no spacer is required.

If 197109 01 rotor drive shaft is fitted then 197487 01 spacer should be fitted.

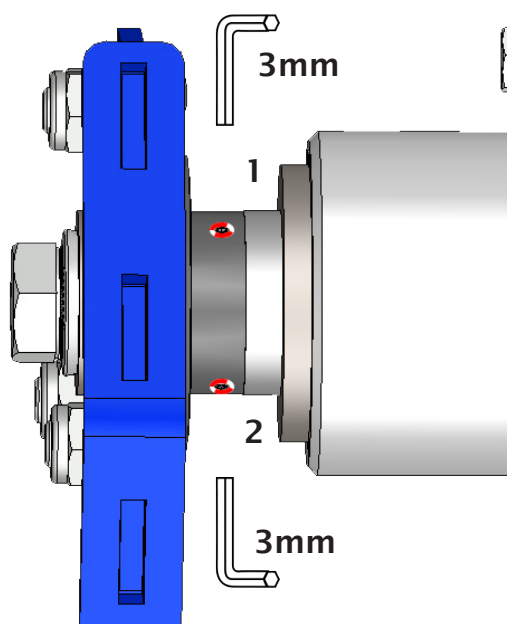
201mm = 198077 01
214mm = 197109 01



Stripper Header CVS & RVS

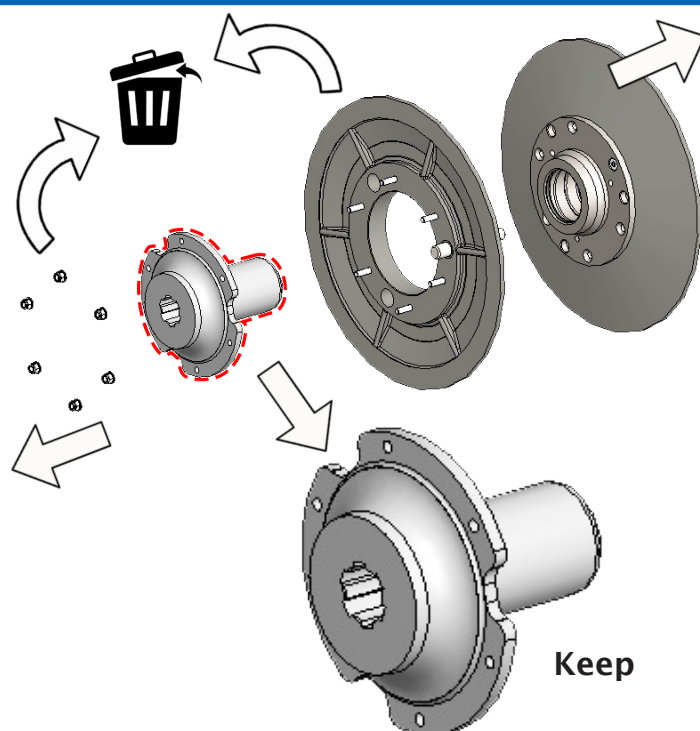
KIT-01488, KIT-01489, KIT-01490 &
KIT-01491 (2004 to 2017)

32. Apply thread lock and tighten the grub screws.

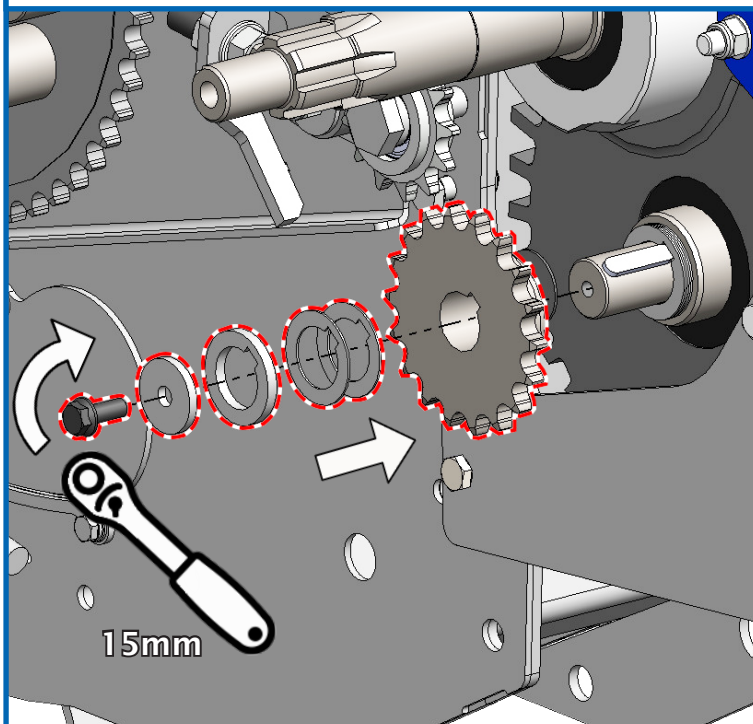


If the front shaft has a groove beneath the tie rod bearing you need to align one grub screw so it tightens into it.

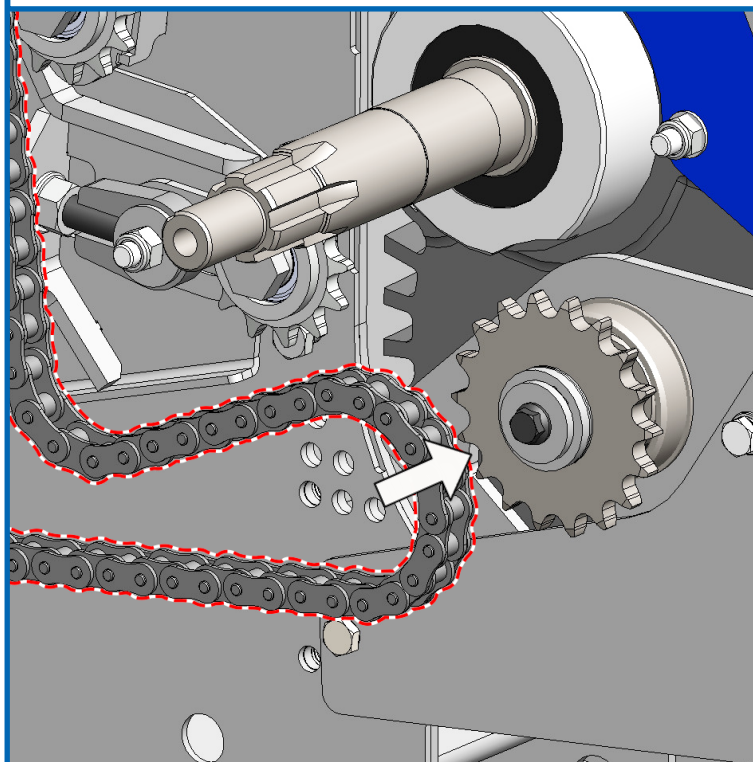
33. Disassemble the rear pulley, keep the centre hub but all other parts can be discarded.



34. Remove the old sprocket and install the new one if provided with your kit, (KIT-01489, KIT-01490 and KIT-01491 only). Check alignment shim as required.



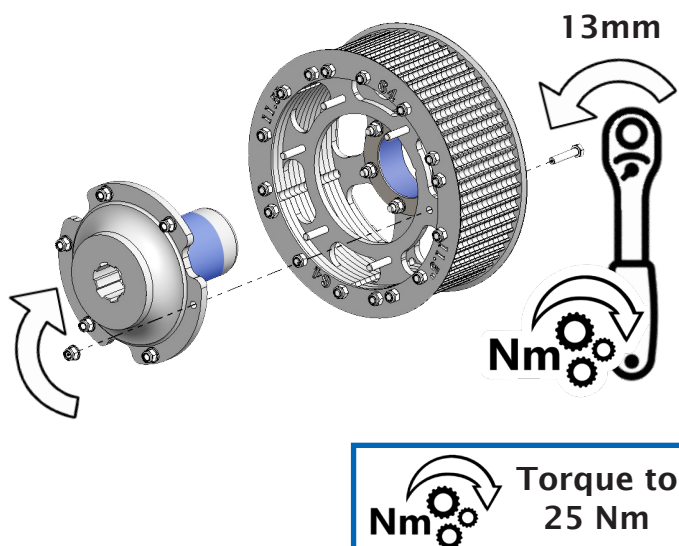
35. Refit the chain and tension accordingly. The chain length may need to be adjusted to suit the new sprocket size.



Stripper Header CVS & RVS

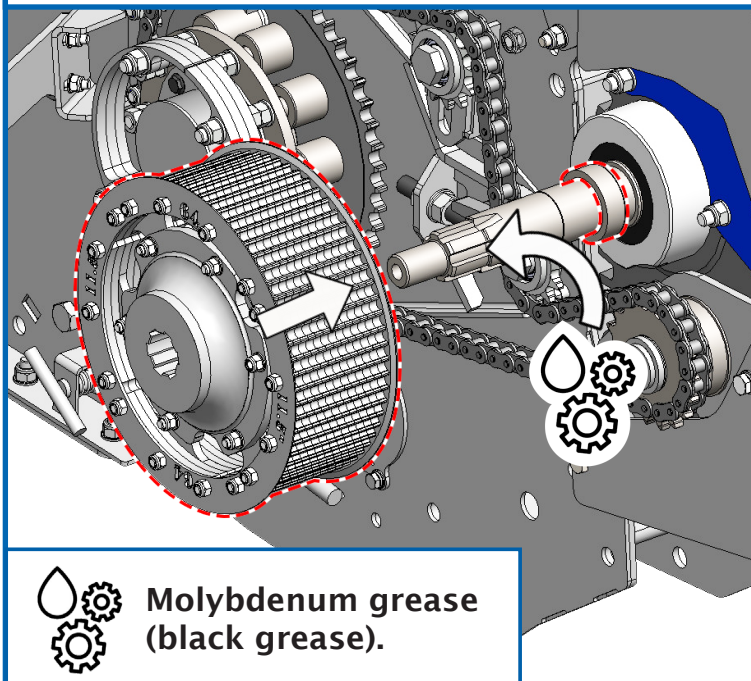
KIT-01488, KIT-01489, KIT-01490 &
KIT-01491 (2004 to 2017)

36. Fit the old pulley hub to the new rear laminate pulley. Use M8 bolts and tighten to torque 25Nm (18lbf.ft). Check there is little side play from wear on the old pulley hub in the region highlighted.

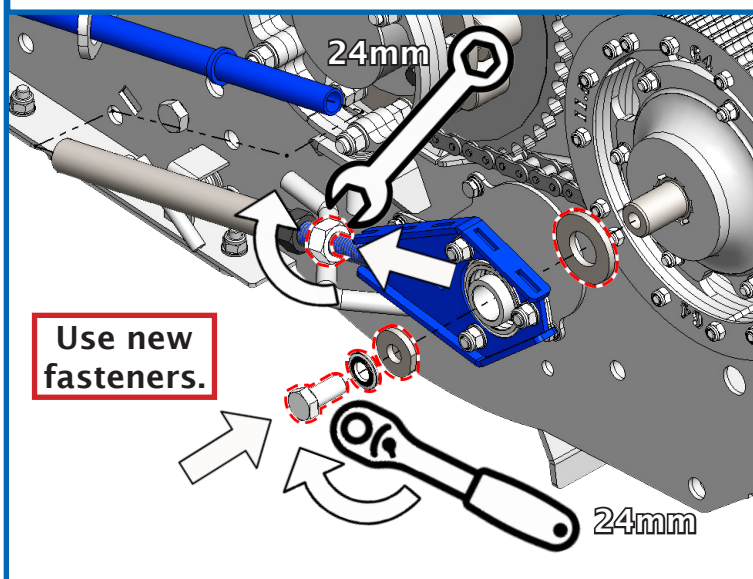


Refer to the speed chart to determine what pulley size to install on the rear hub.

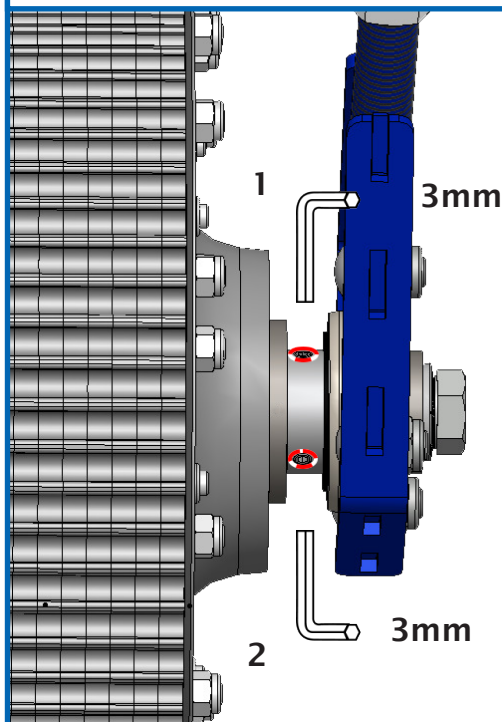
37. Grease the gearbox shaft with black grease then add the spacer ring (292586 01) to the shaft. It should seat on the shoulder of the shaft when the laminate pulley is fitted. Push on laminate pulley



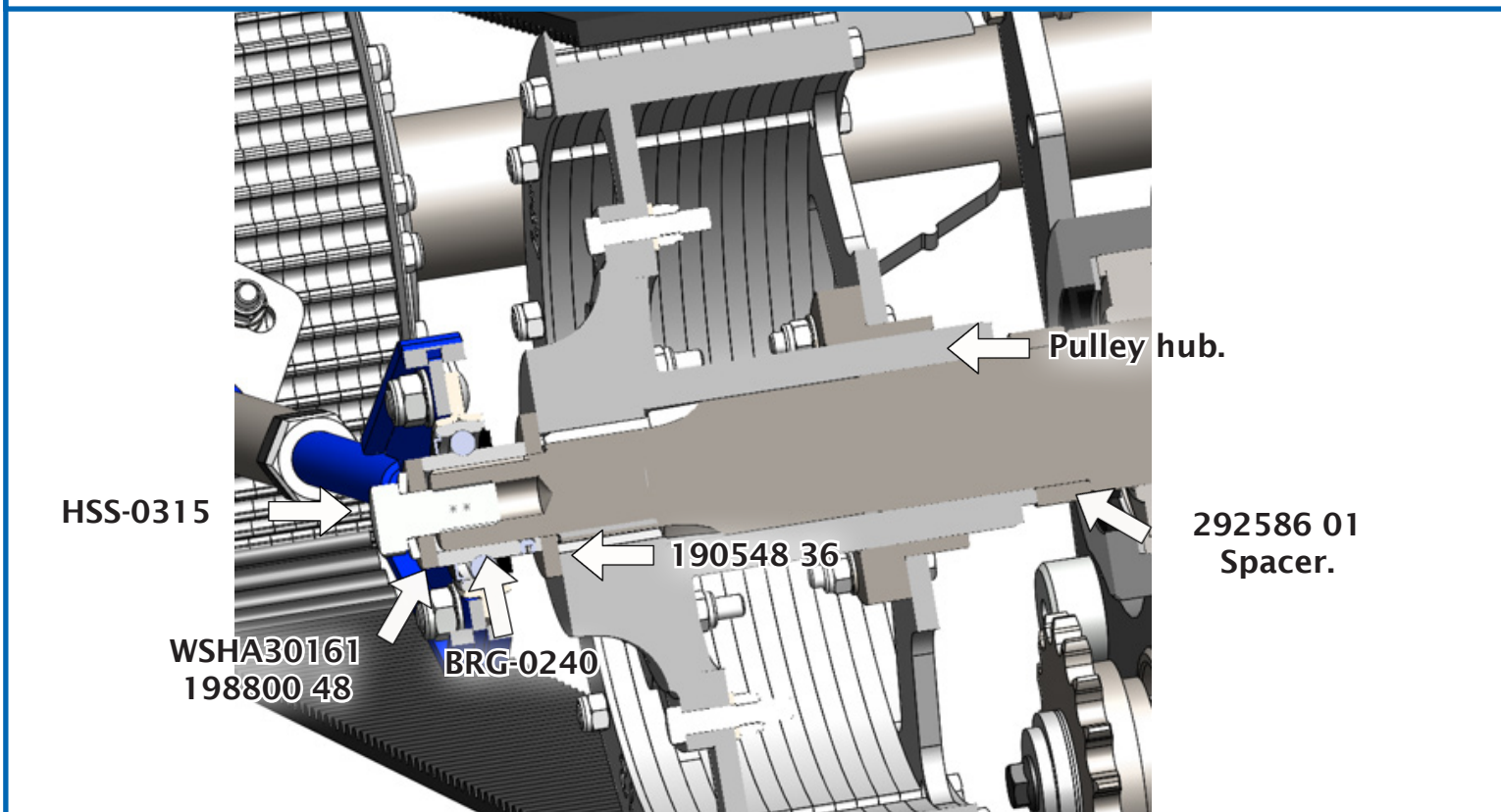
38. Slide washer 190548 36 onto the shaft. Fit the tie rod together and then place the tie rod bearing onto the gearbox shaft. Fit the washers and secure with the **NEW** M16 bolt. Tighten to then locate the spacer ring to the shoulder. Once the set screw is tightened, there should be zero end float of the pulley on the shaft.



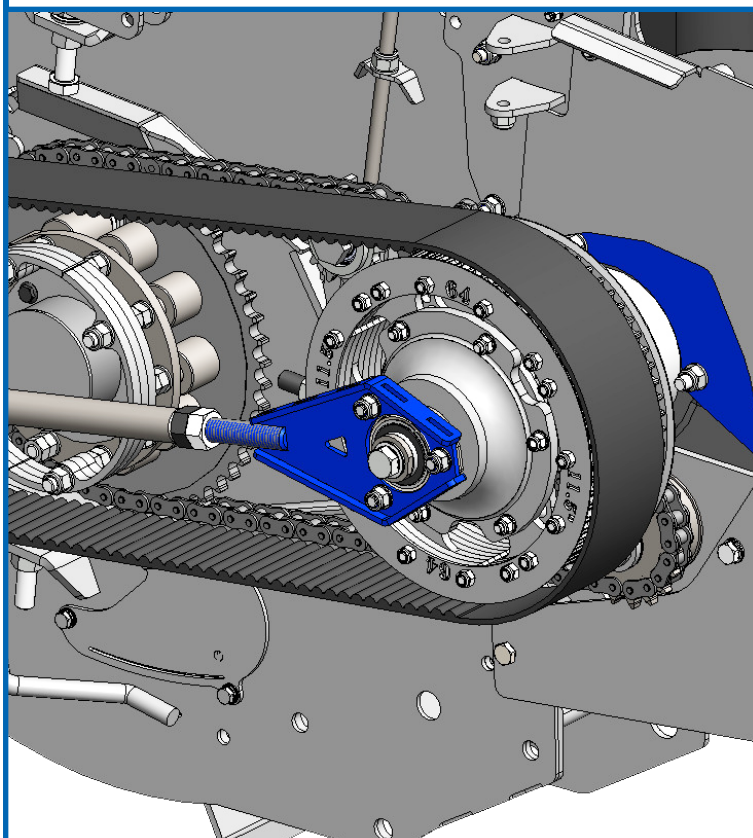
39. Apply threadlocker to the grub screws of the bearing and tighten. If the shaft has a groove in it make sure to align with one of the grub screws and tighten into it.



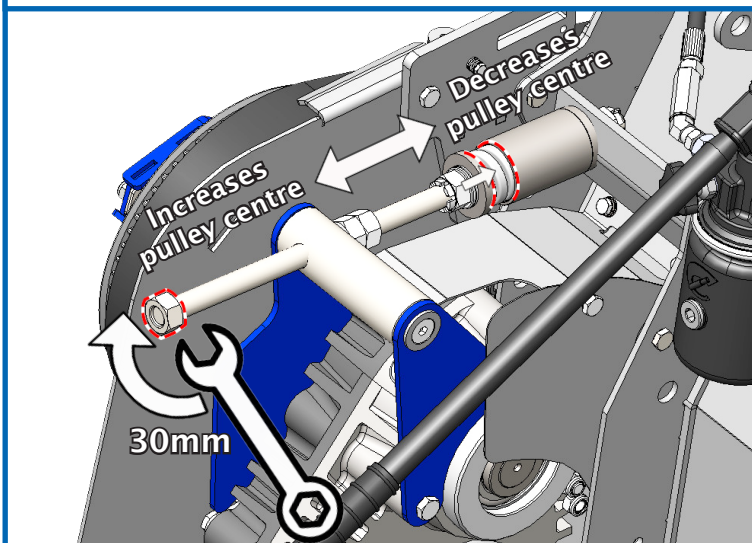
40. Gearbox Pulley.



40. Fit the new HTD toothed belt.

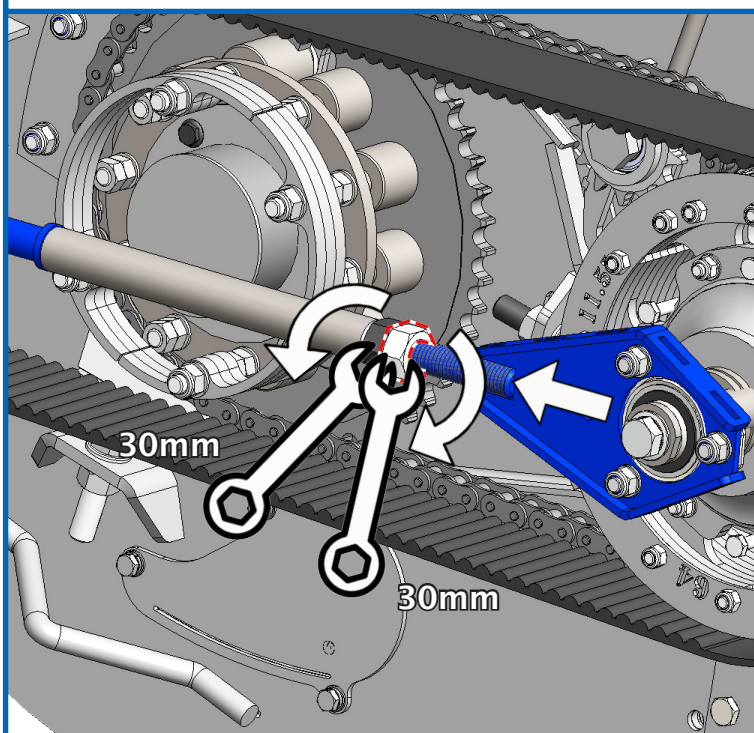


41. Adjust the gearbox pivot to tension the belt. The tension of the HTD drive belt is indicated by the spacer tube which fits over the spring on the gearbox adjuster.



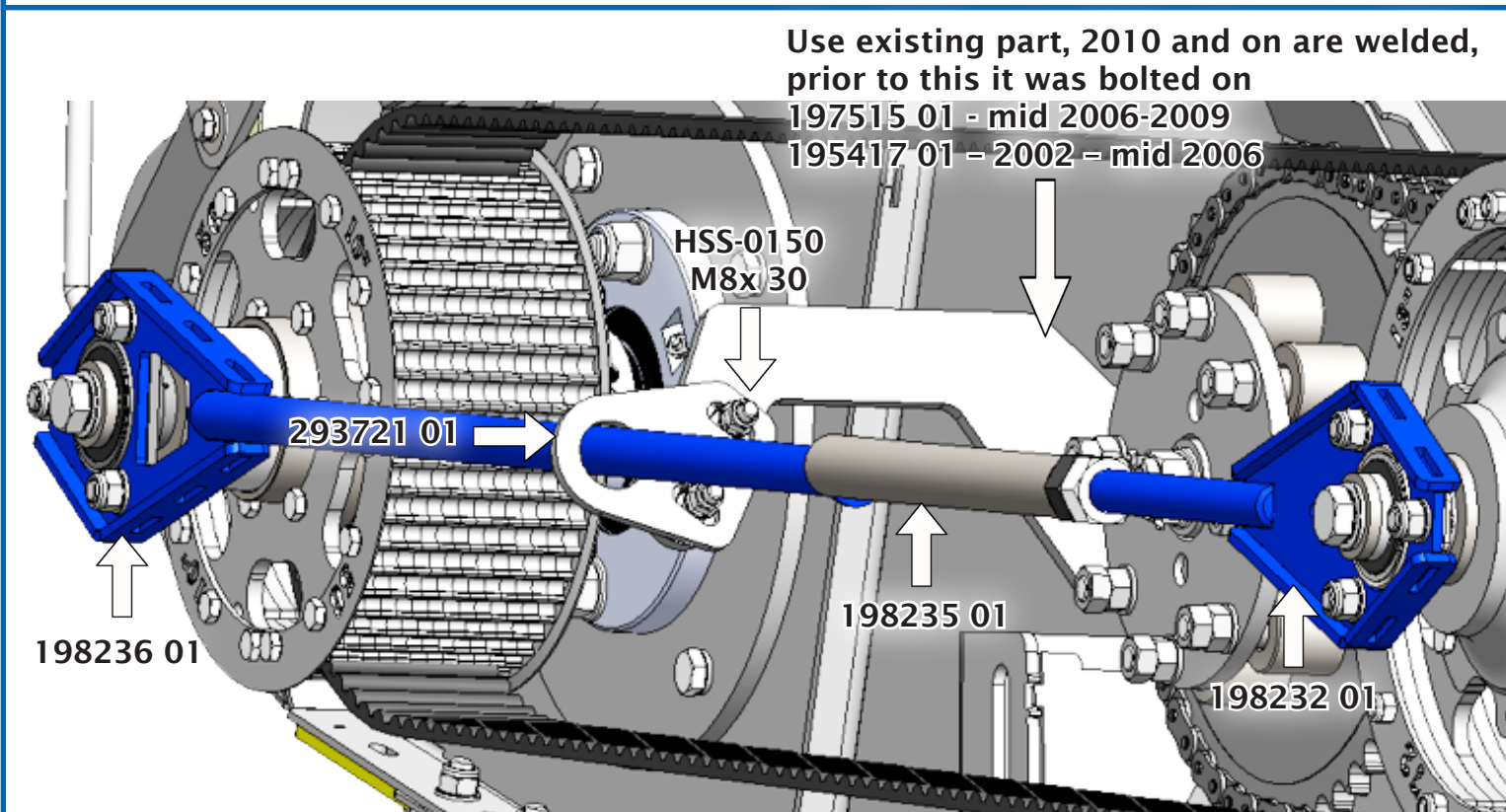
The belt should be tensioned so that the spring is compressed to the same length as the spacer tube. It should still be possible to rotate the spacer tube.

42. Reset the tie rod and tighten the lock nut.

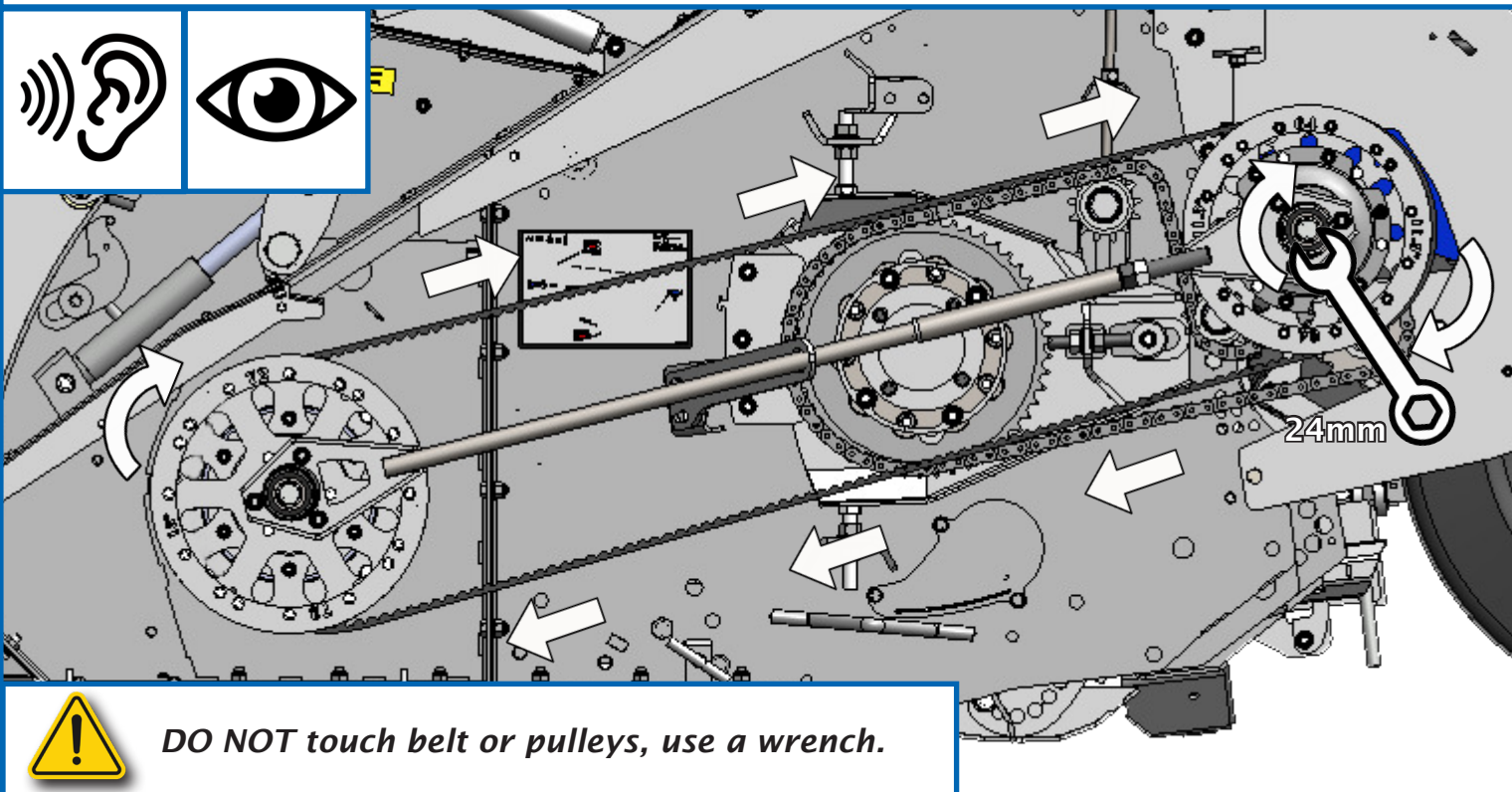


Tighten by hand until taught, then turn an extra 1/6 of a turn and tighten the lock nut.

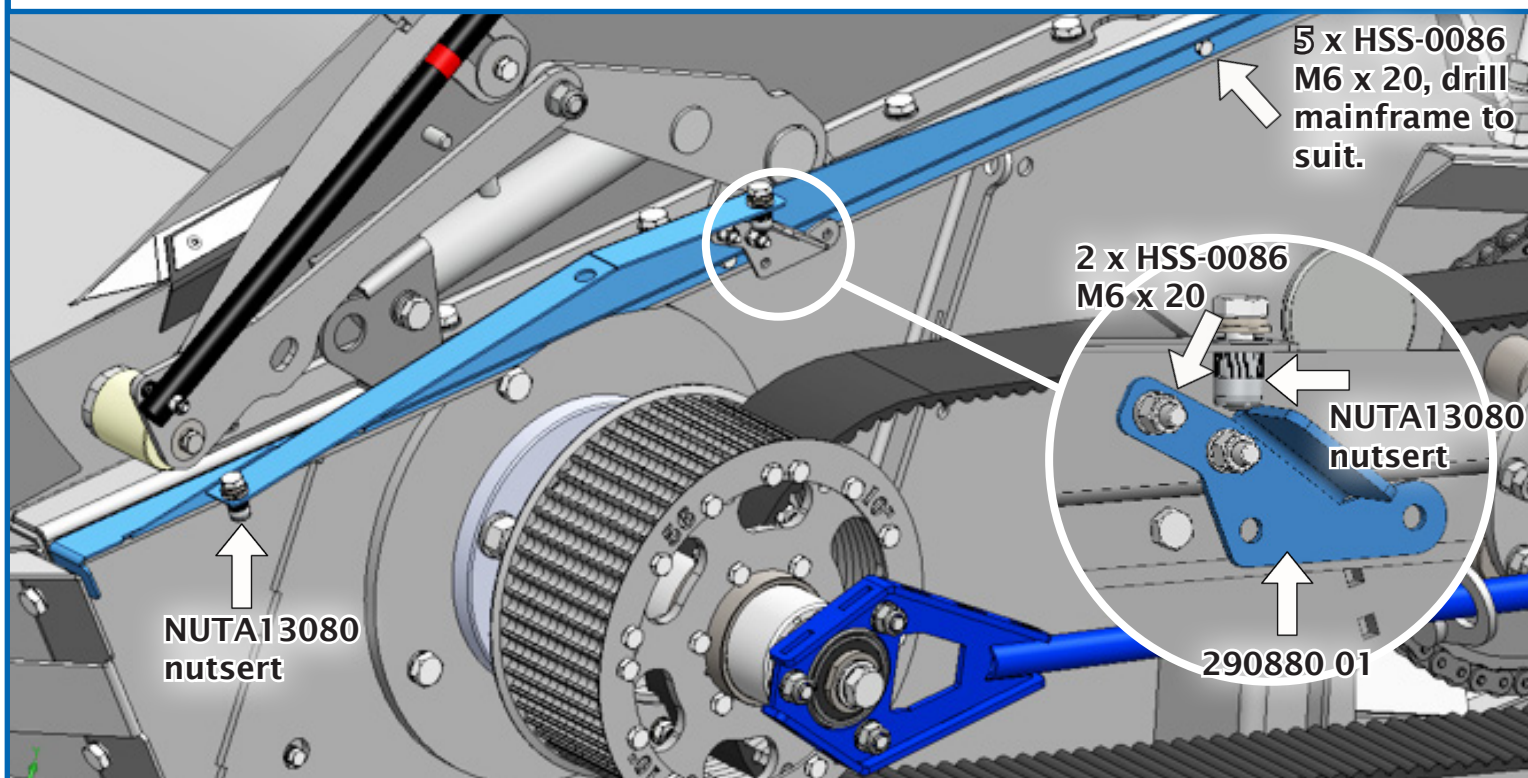
43. Details of the tie rod and bracket.



44. Turn over the belt manually using a wrench. Rotate the drive to ensure no components are catching.



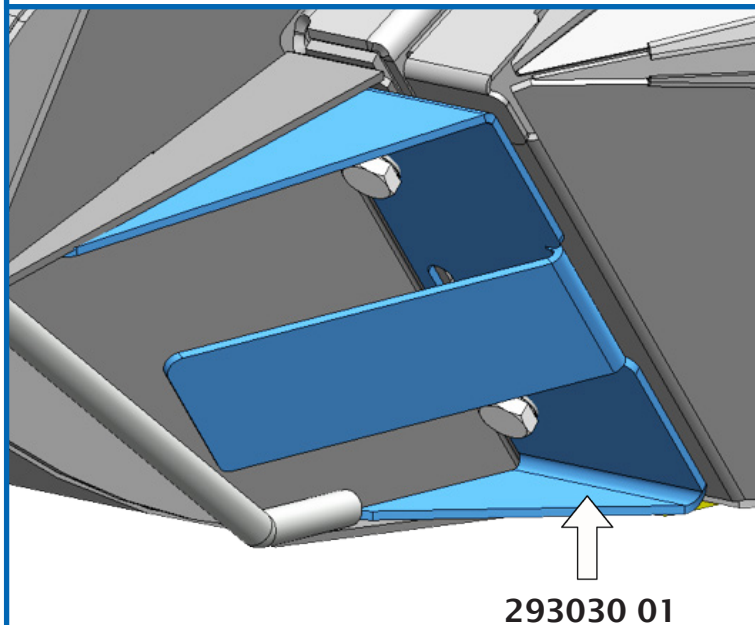
45. Part 290514 01 will need to be fitted with any fixings that line up, ensuring the radius cut out for the drive lines up, while the remaining holes are drilled using 290514 01 as a template.



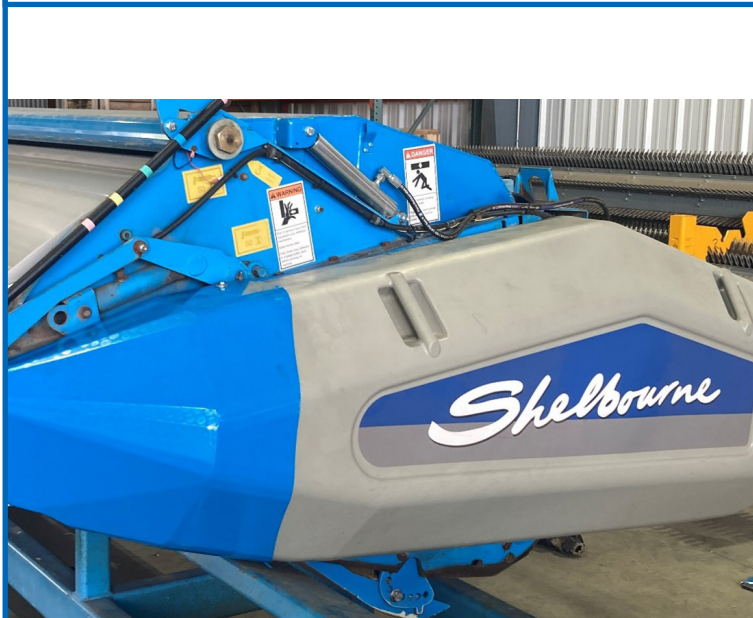
Stripper Header CVS & RVS

KIT-01488, KIT-01489, KIT-01490 &
KIT-01491 (2004 to 2017)

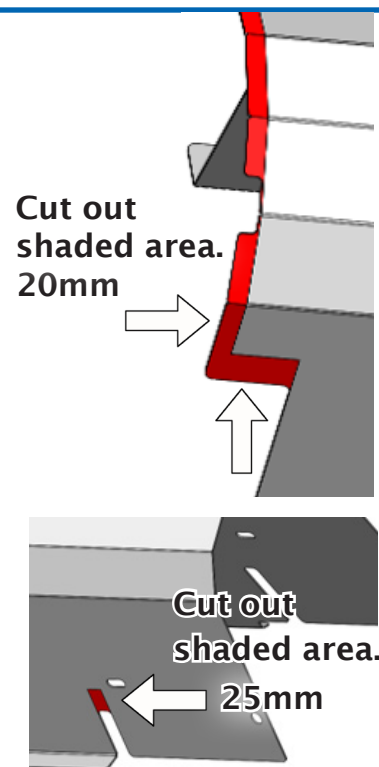
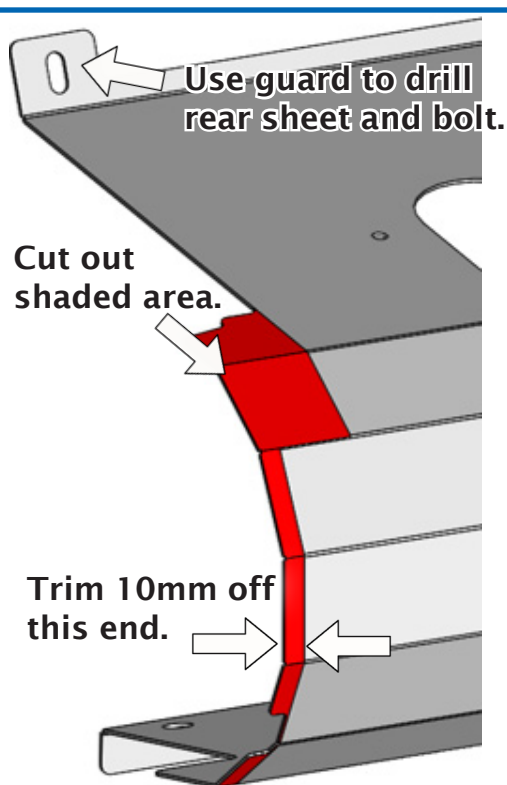
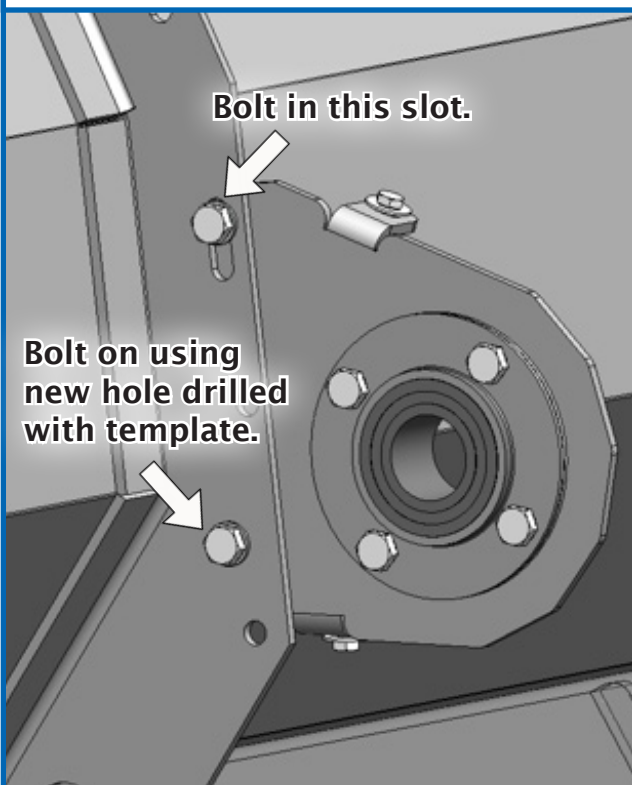
46. The original crop divider can be re-fitted along with the new divider using the original 10mm bolts. Only if marker rod type of divider fitted.



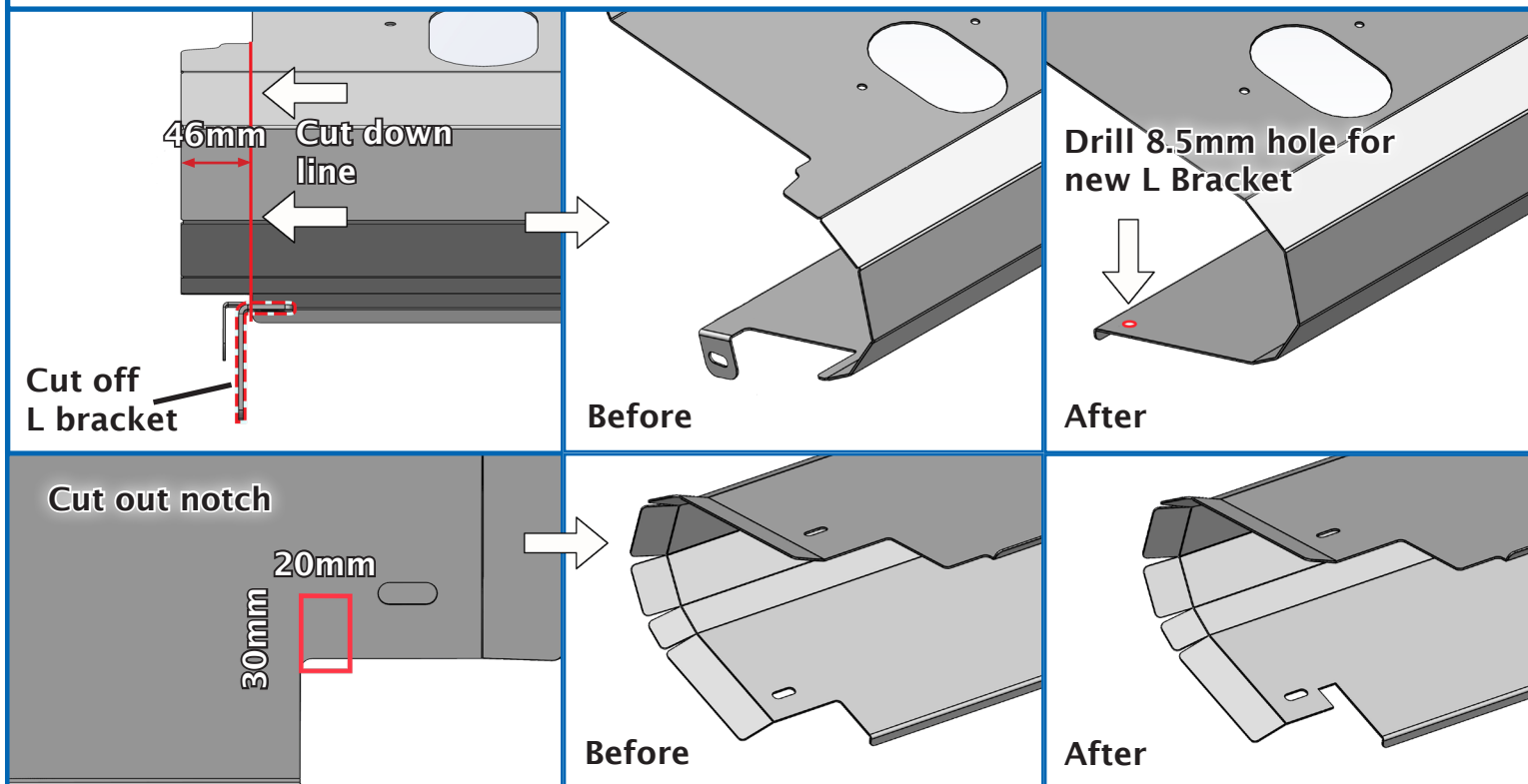
47. The hose for the hood cylinder may also need relocating by moving the P clip onto the 6mm screws for the rubber hood seal.



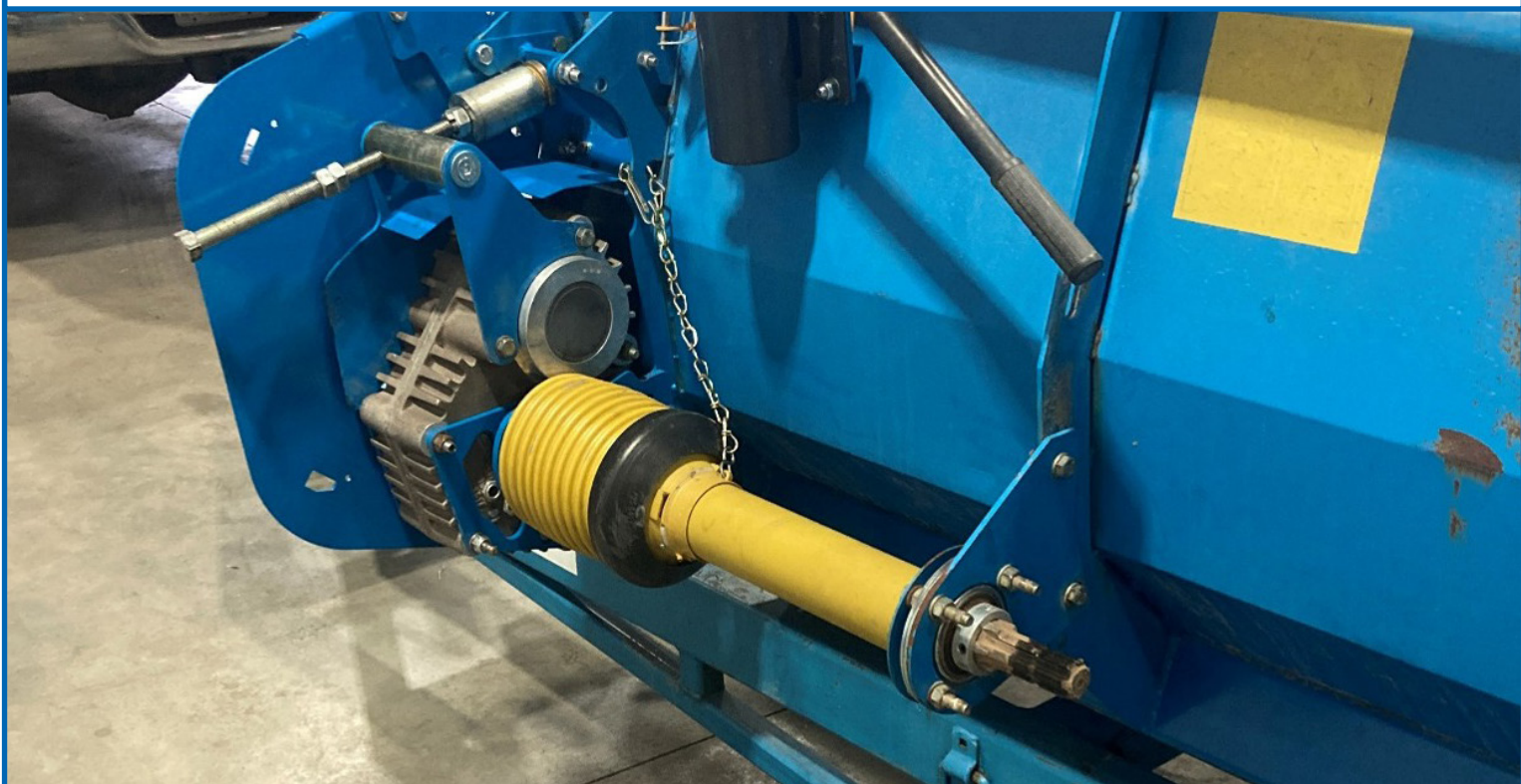
48a. If fitted, the rear guard (2014-2017), will need to be trimmed down and re-fitted into the lower position as shown.



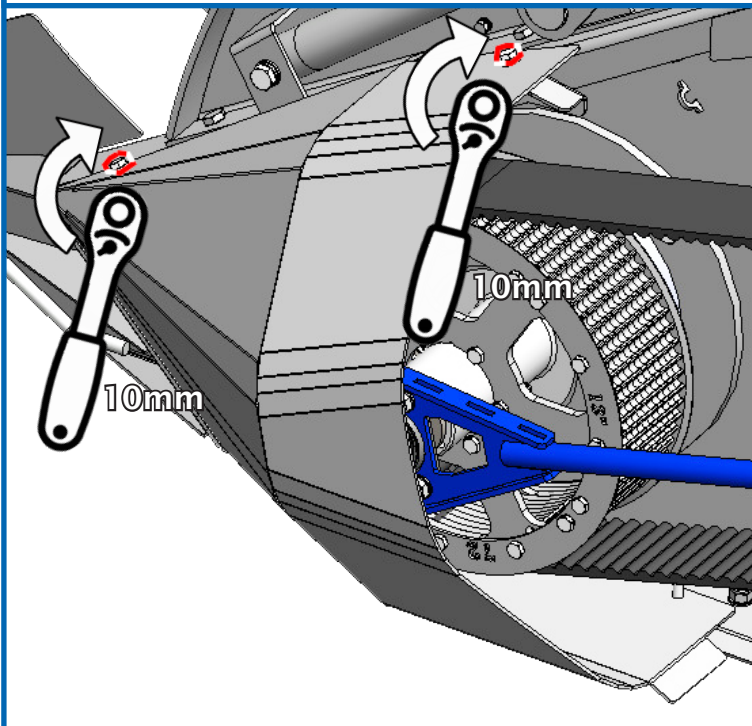
48b. If fitted, the rear guard (2007-2013), will need to be trimmed down and re-fitted as shown. Cut off the L bracket.



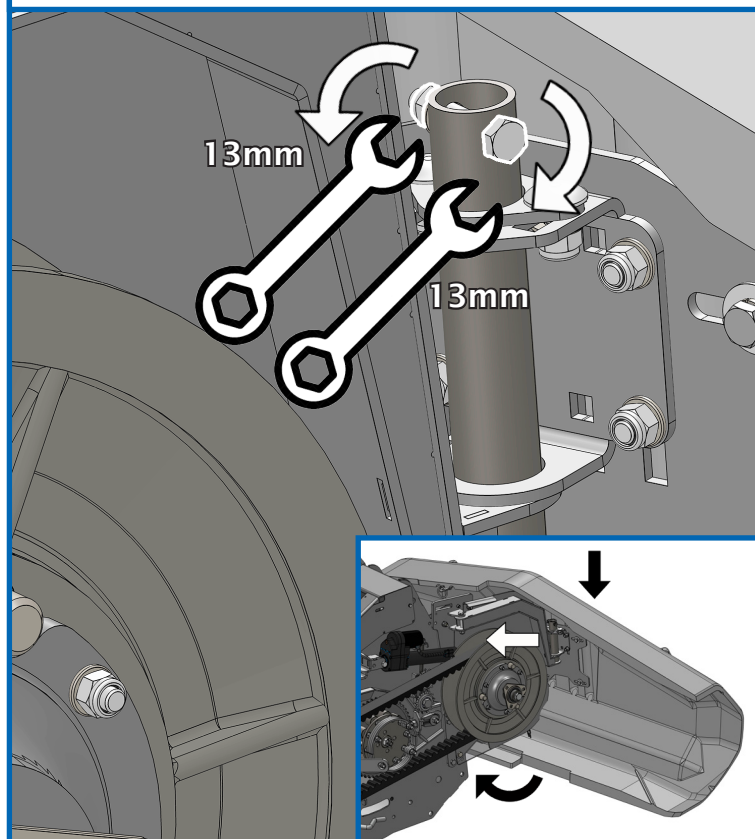
48c. If no metal guard has been used (pre 2007), then the drive shaft carrier will need to be moved into the lower position and plastic guards re-fitted as before.



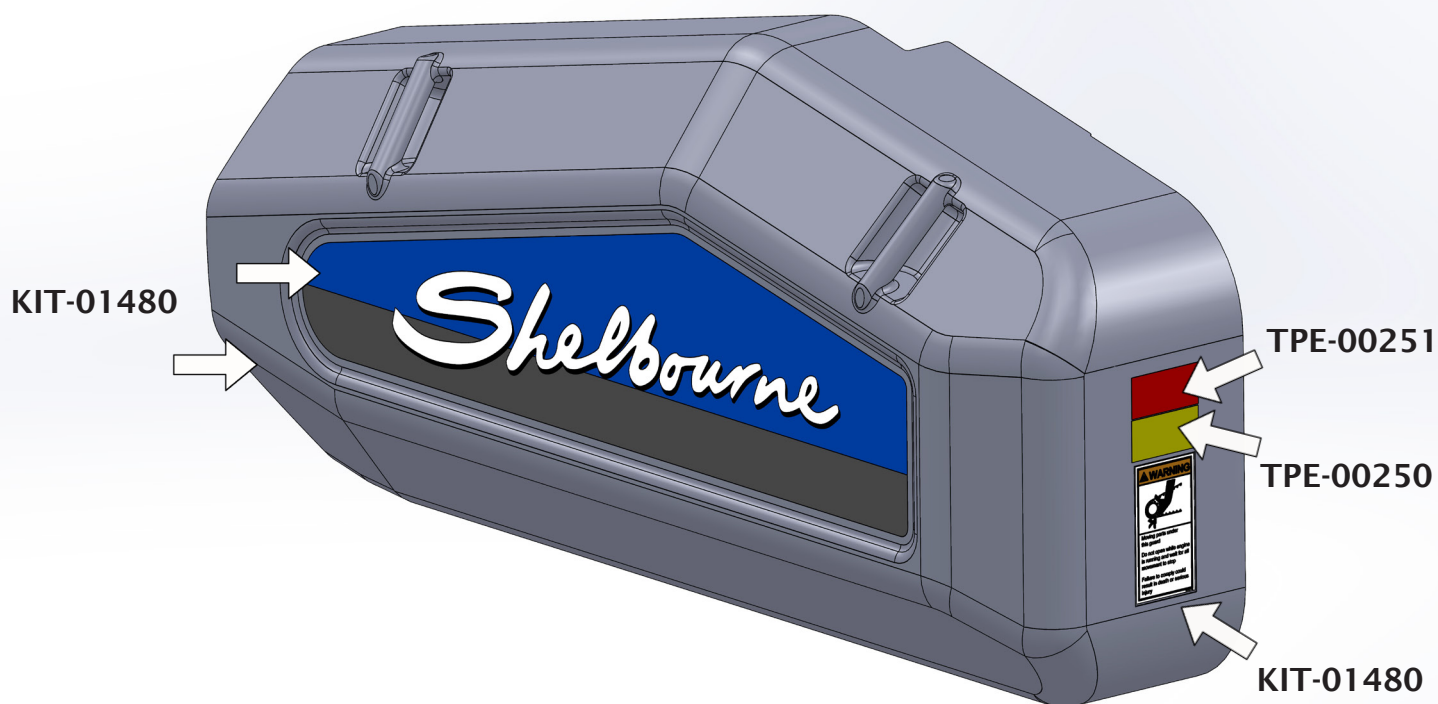
49. Fit front steel nose cone with 4 bolts. To fit the nose cone, the grease fitting (if fitted), may need to be removed from the crop deflector pivot and re-fitted after installation.



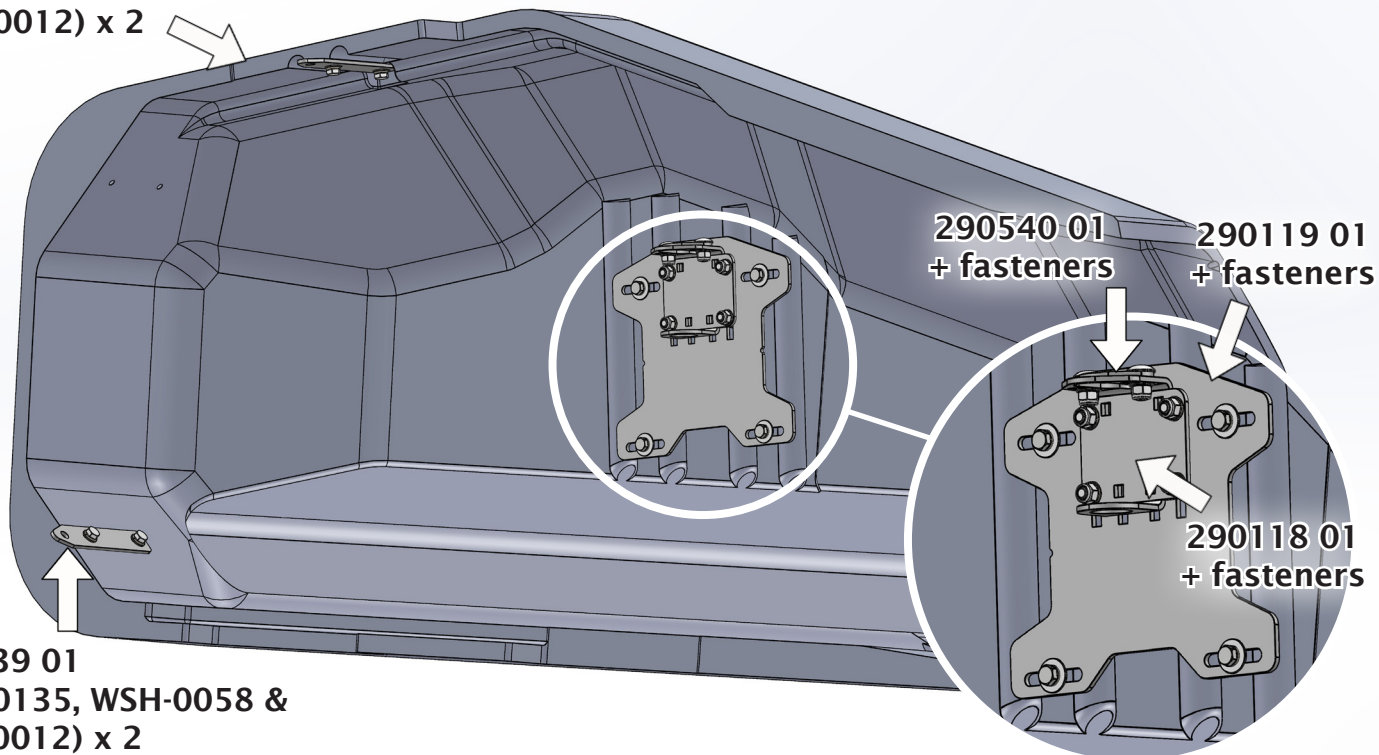
50. Fit the guard, adjust as required.



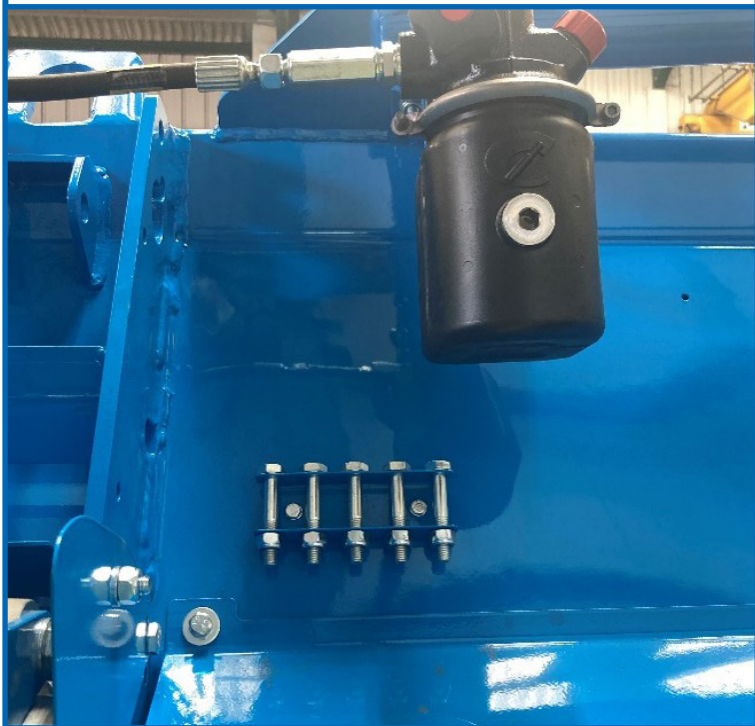
51. Sub assemble drive guard with fixing brackets.



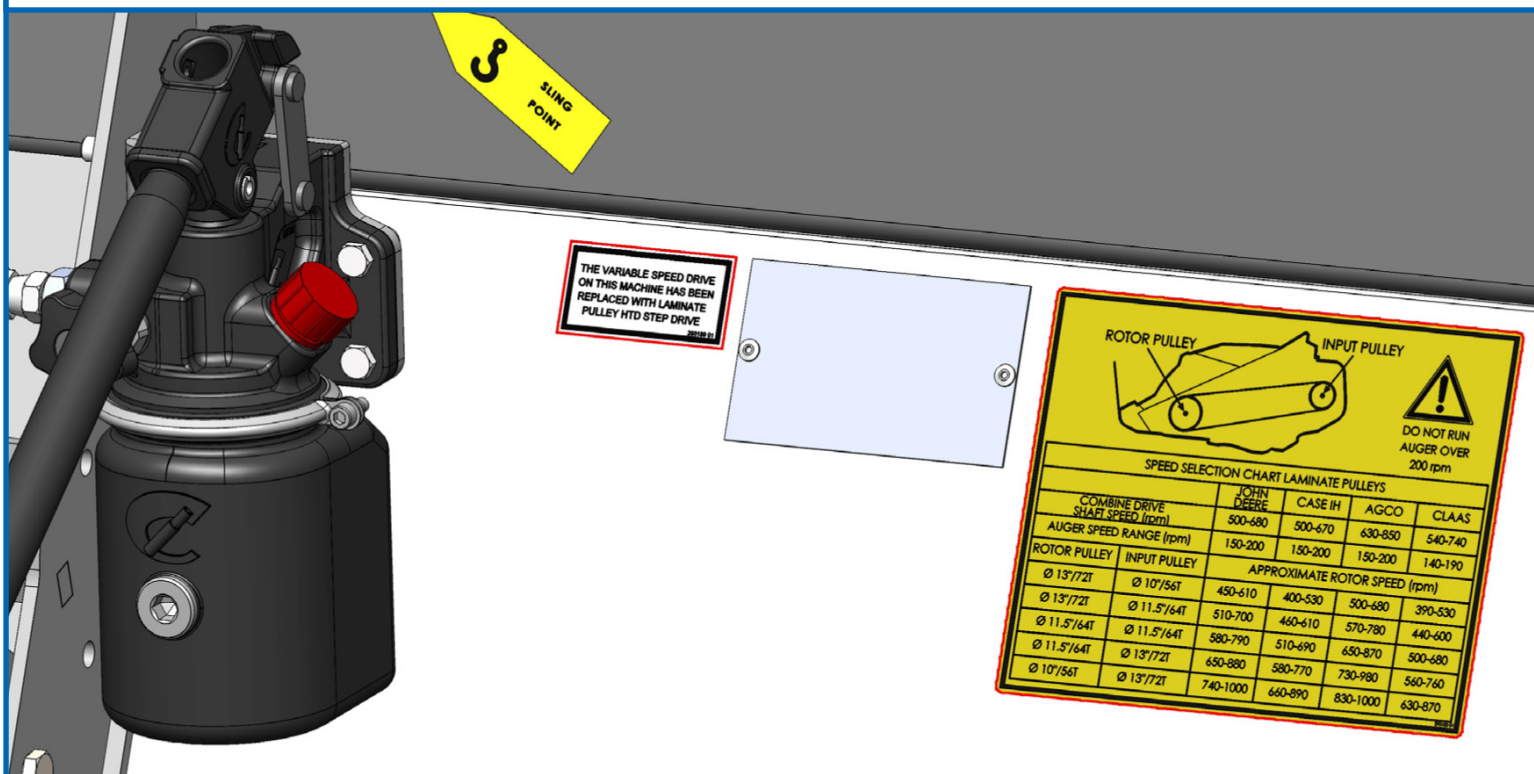
290539 01

(HSS-0135, WSH-0058 &
WSH-0012) x 2

52. The shear bolt rack may need moving to the rear sheet, this can be done using its original 6mm bolts and drilling 2 holes to suit in a convenient location.

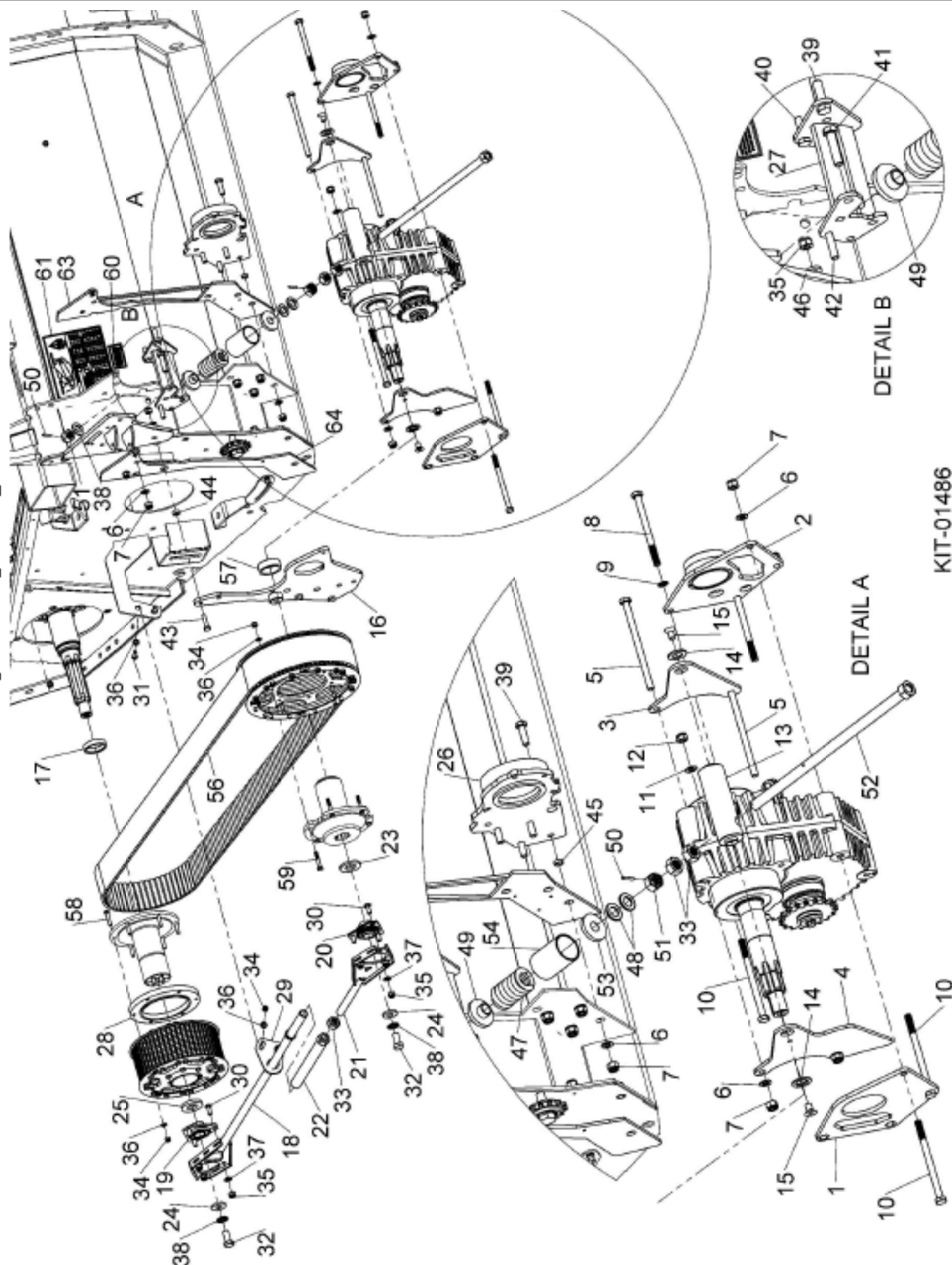


53. The rotor speed decal should be placed on the LH end rear of the header, in an easy to read location. The variable speed conversion to step drive decal should be placed next to the serial number plate, on some headers this will be on the RH end.



Shelbourne Reynolds Engineering Limited

ASSY NUMBER: KIT-01486				ASSY DESCRIPTION: CVS LAMINATE PULLEY RETROFIT PARTS			
ITEM	PART NO	DESCRIPTION	QTY	ITEM	PART NO	DESCRIPTION	QTY
1	198021 01	G/BOX MOUNT SIDE PLT W/A	1	41	BSS-0260	SET SCREW M12x50	1
2	293558 01	GEARBOX MOUNTING SIDE PLATE	1	42	HLTA10290	HEX HEAD BOLT M10x45	1
3	198025 01	G/BOX ADJ REAR MOUNT PLT	1	43	BSS-0202	SET SCREW M10x40	1
4	198026 01	G/BOX ADJ FRONT MOUNT PLT	1	44	190548 71	WASHER 10x20x8	1
5	BLTA12810	HEX HEAD BOLT M12x190	2	45	292600 21	WASHER 12.2x17.6x6	3
6	WSH-0018	PLAIN WASHER M12	12	46	292600 10	WASHER 10.6x22x4	1
7	NUT-0269	NYLOC NUT M12	12	47	SRGE02520	DIE SPRING	1
8	BLT-2276	HEX HEAD BOLT M12 x 150	2	48	WSH-0020	PLAIN WASHER M20	3
9	WSHA20121	SEALPROOF WASHER 12mm	2	49	199728 01	SPRING BOSS	1
10	BLTA12750	HEX HEAD BOLT M12 x 170	3	50	PIN-1620	ROLL PIN M5 X 20	2
11	WSH-0019	PLAIN WASHER M12	1	51	NUT-0580	CASTLE NUT M20	2
12	NUT-0270	NYLOC NUT 1 TYPE M12	1	52	198029 01	GEARBOX ADJUSTER ROD	1
13	198023 01	GEARBOX ADJUSTER	1	53	199727 01	SPRING BOSS	1
14	198024 01	G/BOX ADJ CSR WASHER	2	54	199726 01	SPRING SETTING TUBE	1
15	SCF-1930	CSR SET HD SCREW M12x20	2	56	HEL-55250	SYNCHRO BELT	1
16	293844 01	GEARBOX SUPPORT PLT W/A	1	57	292586 01	SPACER	1
17	197487 01	SPACER DEPENDS ROTOR DRIVE HEART	1	58	HLTA08224	HEX HEAD BOLT M8x50	6
18	198236 01	TIE BAR W/A	1	59	HLTA08264	HEX HD BOLT M8x40	6
19	BRG-23000	BEARING	1	60	292189 01	DRIVE CHANGED DECAL	1
20	BRG-0240	BEARING	1	61	292182 01	SPEED SELECTION DECAL	1
21	198232 01	TIE ROD END W/A	1	62	292012 01	DRILLING TEMPLATE	1
22	198235 01	TIE ROD ADJUSTER W/A	1	63	290221 01	CUT & DRILL TEMPLATE	1
23	190548 36	WASHER 30.5x60x6	1	64	290222 01	CUT & DRILL TEMPLATE	1
24	198800 48	WASHER 40x16.5x6	2				
25	292600 23	WASHER 60x30.5x8	1				
26	293842 01	GEARBOX PIVOT PLATE W/A	1				
27	293848 01	ADJUSTER BRACKET W/A	1				
28	292865 01	HYD CONVERSION ALIGNMENT RING	1				
29	293721 01	TIE ROD PLATE	1				
30	BLT-3745	COACHBOLT M10 x 25	6				
31	BSS-0150	SET SCREW M8x30	2				
32	BSS-0315	SET SCREW M16x35	2				
33	NUT-0185	PLAIN HEX NUT M20	3				
34	NUT-0263	NYLOC NUT M8	14				
35	NUT-0265	NYLOC NUT M10	9				
36	WSH-0012	PLAIN WASHER M8	16				
37	WSH-0015	PLAIN WASHER M10	8				
38	WSHA30161	LOCK WASHER M16	2				
39	BSS-0250	SET SCREW M12x40	7				
40	BSS-0198	SET SCREW M10x35	1				



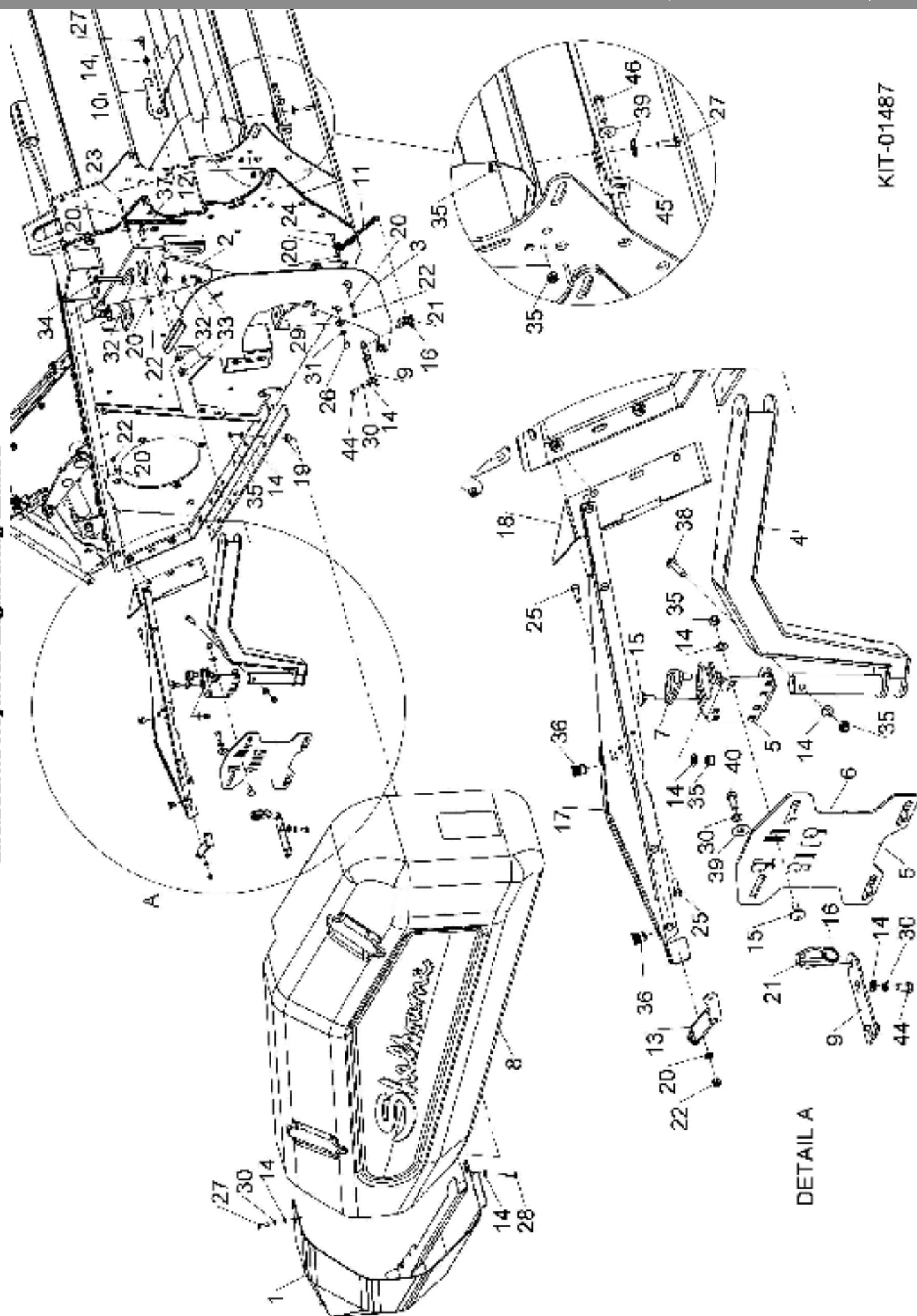
KIT-01488

Shelbourne Reynolds Engineering Limited

ASSY NUMBER: KIT-01487				ASSY DESCRIPTION: CVS LAMINATE PULLEY GUARD KIT			
ITEM	PART NO	DESCRIPTION	QTY	ITEM	PART NO	DESCRIPTION	QTY
1	290494 01	CORNER GUARD W/A	1	41	TPE-00250	REFLECTIVE TAPE - YELLOW	0.23
2	293722 01	PIVOT W/A	1	42	TPE-00251	REFLECTIVE TAPE - RED	0.23
3	290496 01	GUARD MOUNTING PLATE	1	43	291992 01	DRILLING TEMPLATE	1
4	199998 01	ARM W/A	1	44	HSS-0125	SET SCREW M8 x 16	4
5	290118 01	PIVOT BRACKET	1	45	199602 01	SMALL BRACKET	1
6	290119 01	MOUNTING PLATE	1	46	HSS-0152	SET SCREW M8 x 25	1
7	290540 01	CLAMP BRACKET	1				
8	KIT-01480	DRIVE END PLASTIC GUARD KIT	1				
9	290539 01	LOCATING PLATE	2				
10	198288 01	GEARBOX COVER PLT	1				
11	CEN-0145	CHAIN	0.17				
12	CEN-0145	CHAIN	0.17				
13	290880 01	GUARD SUPPORT	1				
14	WSE-0012	PLAIN WASHER M8	20				
15	BLT-4710	COACH BOLT M8x20	6				
16	CHA-30022	SPLIT KEYRING	2				
17	290514 01	GUARD MOUNTING PLATE	1				
18	293030 01	DIVIDER DEFLECTOR	1				
19	190548 23	WASHER 9x21x8	1				
20	WSE-0009	PLAIN WASHER M6	15				
21	PIN-01950	LYNCH PIN	2				
22	NUT-0260	NYLOC NUT M6	9				
23	HSS-0092	SET SCREW M6x30	1				
24	HSS-0088	SET SCREW M6x25	1				
25	HSS-0086	SET SCREW M6x20	7				
26	HSS-0185	SETScrew M10x16	1				
27	HSS-0145	SETScrew M8x25	7				
28	HSS-0150	SET SCREW M8x30	1				
29	WSEAL0101	PENNY WASHER M10	1				
30	WSE-0058	SPRING WASHER M8	11				
31	WSE-0061	SPRING WASHER M10	1				
32	WSE-0015	PLAIN WASHER M10	4				
33	NUT-0265	NYLOC NUT M10	4				
34	BLTAL0500	HEX. HEAD BOLT M10x80	1				
35	NUT-0263	NYLOC NUT M8	12				
36	NUTAL3080	NUTSERT M8	2				
37	HSS-0194	SET SCREW M10x30	2				
38	HSS-0155	SET SCREW M8x45	1				
39	WSE-1038	PENNY WASHER M8	6				
40	HSS-0140	SETScrew M8x20	4				

Shelbourne Reynolds Engineering Limited

KIT-01487



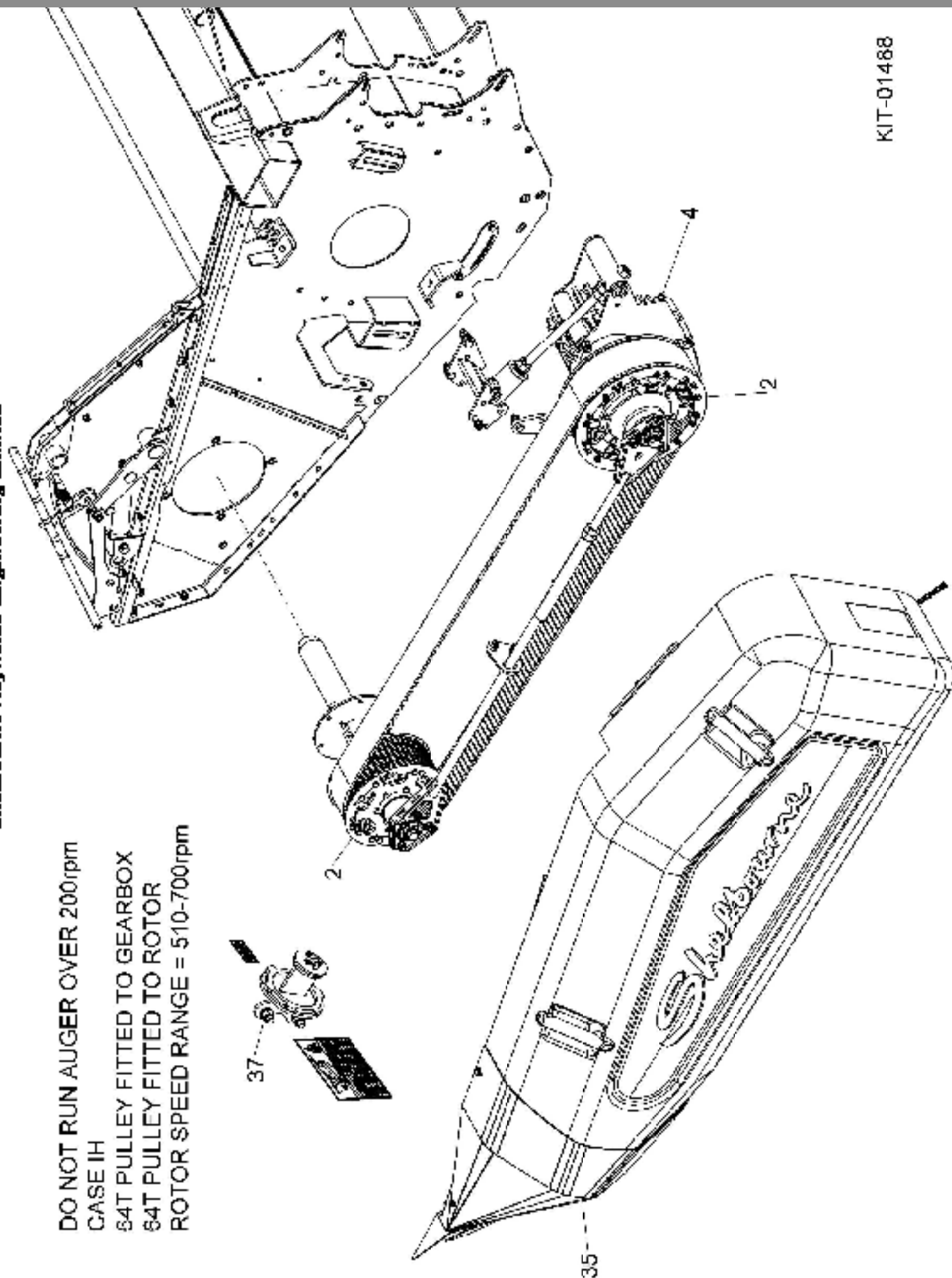
Shelbourne Reynolds Engineering Limited

KIT-01488			CASE IN HTD LAMINATE CONVERSION KIT			ASSY DESCRIPTION: FOR CASE IN FLAGSHIP MODELS ONLY	
ITEM	PART NO	DESCRIPTION	QTY	ITEM	PART NO	DESCRIPTION	QTY
1	292864 01	64T HTD LAMINATE PULLEY ASSY	2				
2							
3							
4	KIT-01486	CVS LAMINATE PULLEY CONV' KIT	1				
5							
6							
7							
8							
9							
10							
11							
12							
13							
14							
15							
16							
17							
18							
19							
20							
21							
22							
23							
24							
25							
26							
27							
28							
29							
30							
31							
32							
33							
34							
35	KIT-01487	CVS LAMINATE PULLEY GUARD KIT	1				
36							
37	KIT-19055	SPARE LAMINATE PULLEY MFG KIT	NOT DOC				
38							
39							

DO NOT USE AUGER OVER 200^{mm}
 64T PULLEY FITTED TO GEARBOX
 64T PULLEY FITTED TO MOTOR
 MOTOR SPEED RANGE = 510-700^{rpm}
 FOR ALTERNATIVE MOTOR SPEEDS
 ORDER
 56T PULLEY, PART No 292125 01
 OR
 72T PULLEY, PART No 292872 01

ITEM 37 NOT INCLUDED
 ONLY REQUIRED IF ADDITIONAL
 PULLEY SUPPLIED

KIT-01488

*Shelbourne Reynolds Engineering Limited***DO NOT RUN AUGER OVER 200rpm****CASE IH****64T PULLEY FITTED TO GEARBOX****64T PULLEY FITTED TO ROTOR****ROTOR SPEED RANGE = 510-700rpm**

Shelbourne Reynolds Engineering Limited

KIT-01489				JOHN DEERE HTD LAMINATE CONVERSION KIT ASSY DESCRIPTION: FOR 60, 70, 9600 & 9700 SERIES (NOT X9)		
ITEM	PART NO	DESCRIPTION	QTY	ITEM	PART NO	DESCRIPTION
1						
2	292864 01	64T HTD LAMINATE PULLEY ASSY	1			
3	292872 01	72T HTD LAMINATE PULLEY ASSY	1			
4	KIT-01486	CVS LAMINATE PULLEY CONV' KIT	1			
5						
6						
7						
8						
9						
10						
11						
12						
13						
14						
15						
16						
17						
18						
19						
20						
21						
22						
23						
24						
25	192768 16	AUGER SPROCKET (15 TEETH)	1			
26						
27						
28						
29						
30	KIT-01733	JD MULTI COUPLER KIT	1			
31						
32						
33						
34						
35	KIT-01487	CVS LAMINATE PULLEY GUARD KIT	1			
36	KIT-19095	SPARE LAMINATE PULLEY MFG KIT	NOT INC			
37						
38						
39						

DO NOT RUN AUGER OVER 200rpm
 64T PULLEY FITTED TO GEARBOX
 72T PULLEY FITTED TO MOTOR
 MOTOR SPEED RANGE = 510-700rpm
 64T PULLEY FITTED TO MOTOR
 MOTOR SPEED RANGE = 650-880rpm
 FOR SLOWER MOTOR SPEEDS ORDER
 56T PULLEY, PART No 292125 01

ITEM 37 NOT INCLUDED
 ONLY REQUIRED IF ADDITIONAL
 PULLEY SUPPLIED

Shelbourne Reynolds Engineering Limited

DO NOT RUN AUGER OVER 200rpm

JOHN DEERE

64T PULLEY FITTED TO GEARBOX

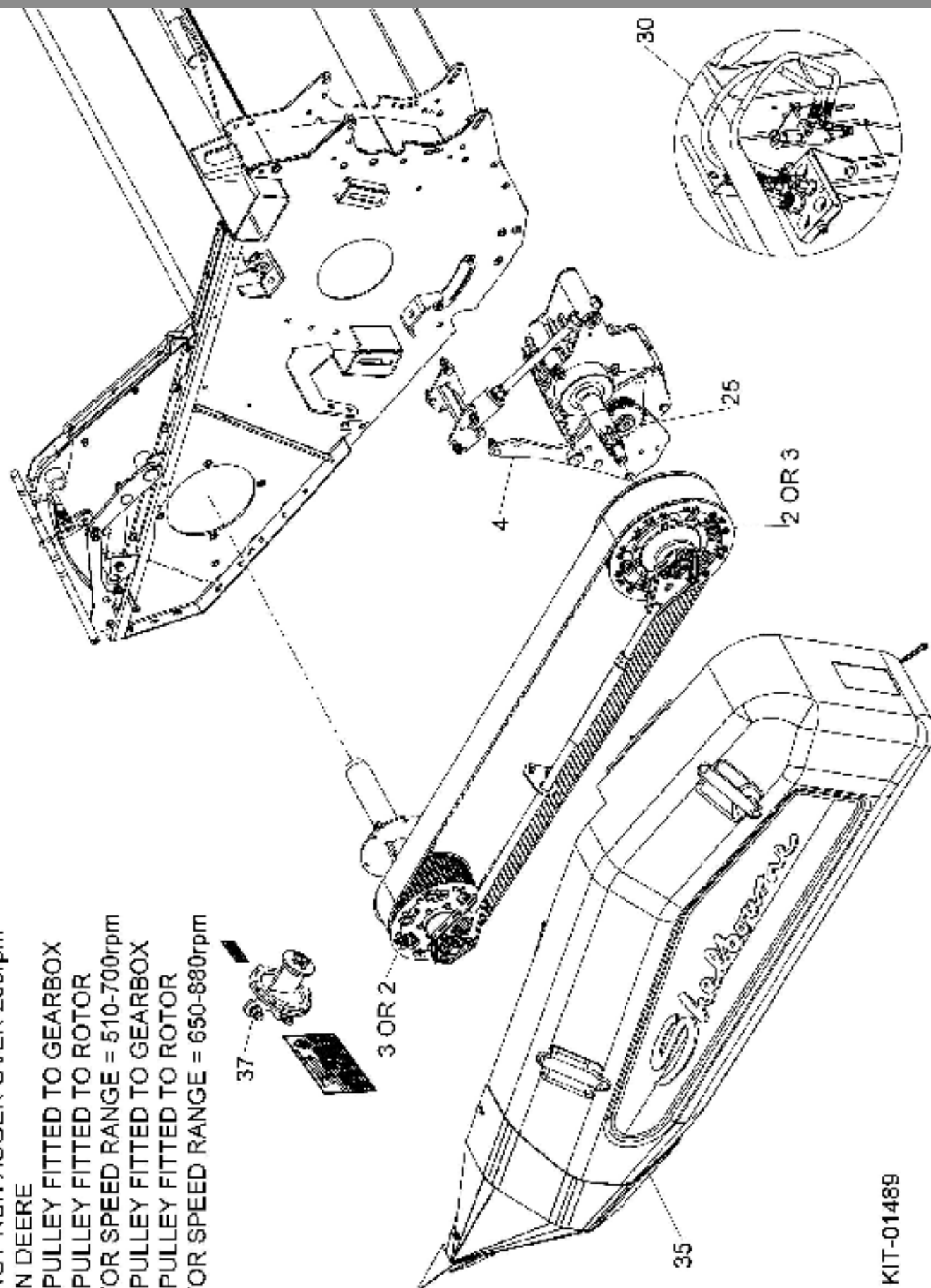
72T PULLEY FITTED TO ROTOR

ROTOR SPEED RANGE = 510-700rpm

72T PULLEY FITTED TO GEARBOX

64T PULLEY FITTED TO ROTOR

ROTOR SPEED RANGE = 650-880rpm



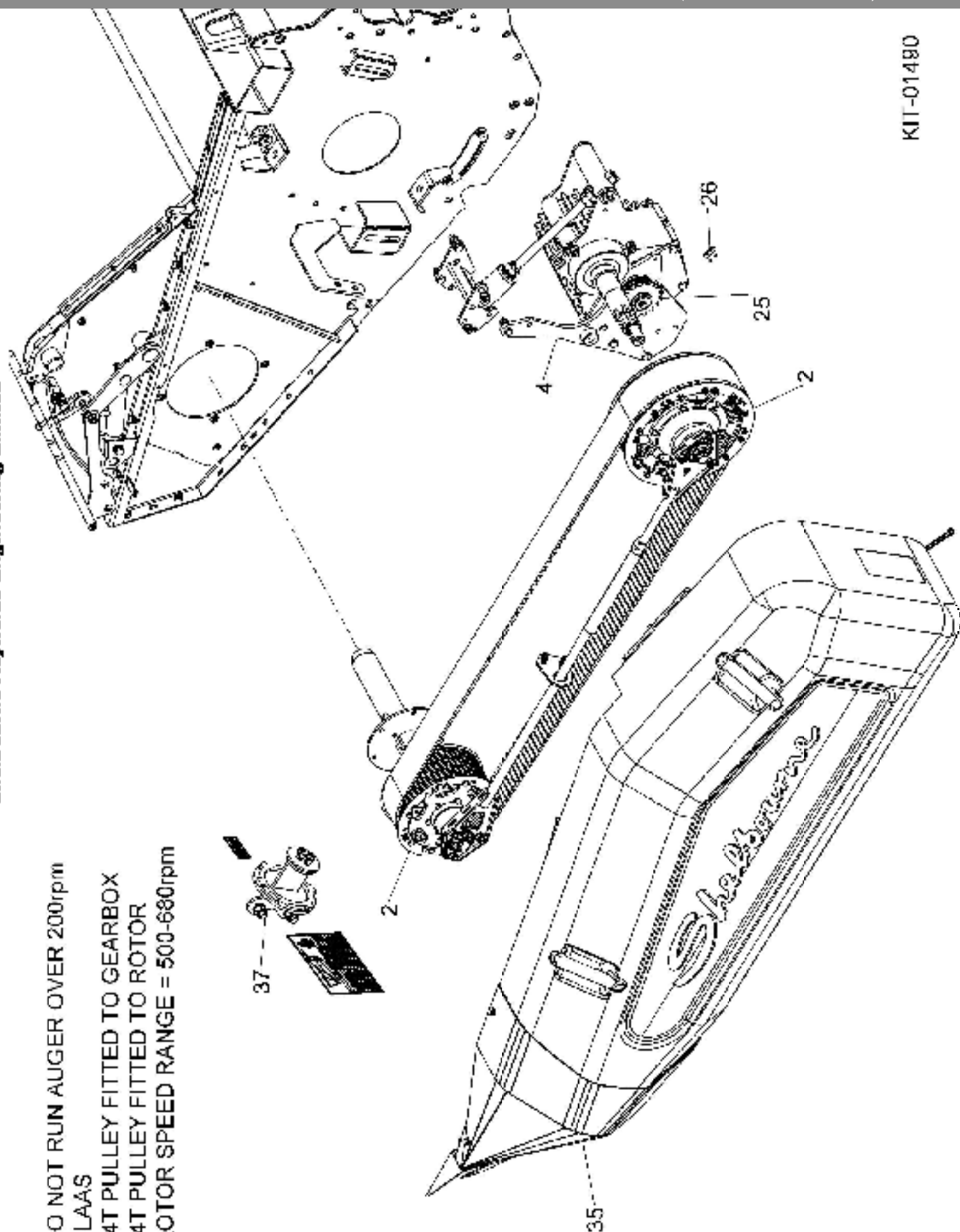
KIT-01489

Shelbourne Reynolds Engineering Limited

ASSY NUMBER: KIT-01490			ASSY DESCRIPTION: CLASS HTD LAMINATE CONVERSION KIT		
ITEM	PART NO	DESCRIPTION	QTY	ITEM	DESCRIPTION
1	292864 01	64T HTD LAMINATE PULLEY ASSY	2		
2					
3	KIT-01486	CVS LAMINATE PULLEY CONV' KIT	1		
4					
5					
6					
7					
8					
9					
10					
11					
12					
13					
14					
15					
16					
17					
18					
19					
20					
21					
22					
23					
24					
25	192768 08	AUGER SPROCKET (13 TEETH)	1		
26	CHN-01910A	CHAIN HALF LINK	1		
27					
28					
29					
30					
31					
32					
33					
34					
35	KIT-01487	CVS LAMINATE PULLEY GUARD KIT	1		
36					
37	KIT-19095	SPARE LAMINATE PULLEY MTS KIT	NOT DOC		
38					
39					

DO NOT RUN AUGER OVER 200rpm
 64T PULLEY FITTED TO GEARBOX
 64T PULLEY FITTED TO MOTOR
 MOTOR SPEED RANGE = 500-680rpm
 FOR ALTERNATIVE MOTOR SPEEDS
 ORDER
 56T PULLEY, PART No 292125 01
 OR
 72T PULLEY, PART No 292872 01

ITEM 37 NOT INCLUDED
 ONLY REQUIRED IF ADDITIONAL
 PULLEY SUPPLIED



DO NOT RUN AUGER OVER 200rpm
CLAAS
64T PULLEY FITTED TO GEARBOX
64T PULLEY FITTED TO ROTOR
ROTOR SPEED RANGE = 500-680rpm

Shelbourne Reynolds Engineering Limited

ASSY NUMBER: KIT-01491			ASSY DESCRIPTION: AGCO HTD LAMINATE CONVERSION KIT (NOT FOR IDEAL COMBINE)				
ITEM	PART NO	DESCRIPTION	QTY	ITEM	PART NO	DESCRIPTION	QTY
1	293125 01	56T HTD LAMINATE PULLEY ASSY	1				
2							
3	292872 01	72T HTD LAMINATE PULLEY ASSY	1				
4	KIT-01486	CVS LAMINATE PULLEY CONV' KIT	1				
5							
6							
7							
8							
9							
10							
11							
12							
13							
14							
15							
16							
17							
18							
19							
20							
21							
22							
23							
24							
25	192768 20	AUGER SPROCKET (12 TEETH)	1				
26							
27							
28							
29							
30	KIT-01736	AGCO MULTI COUPLER KIT	1				
31							
32							
33							
34							
35	KIT-01487	CVS LAMINATE PULLEY GUARD KIT	1				
36							
37	KIT-19095	SPARE LAMINATE PULLEY MFG KIT	NOT INC				
38							
39							

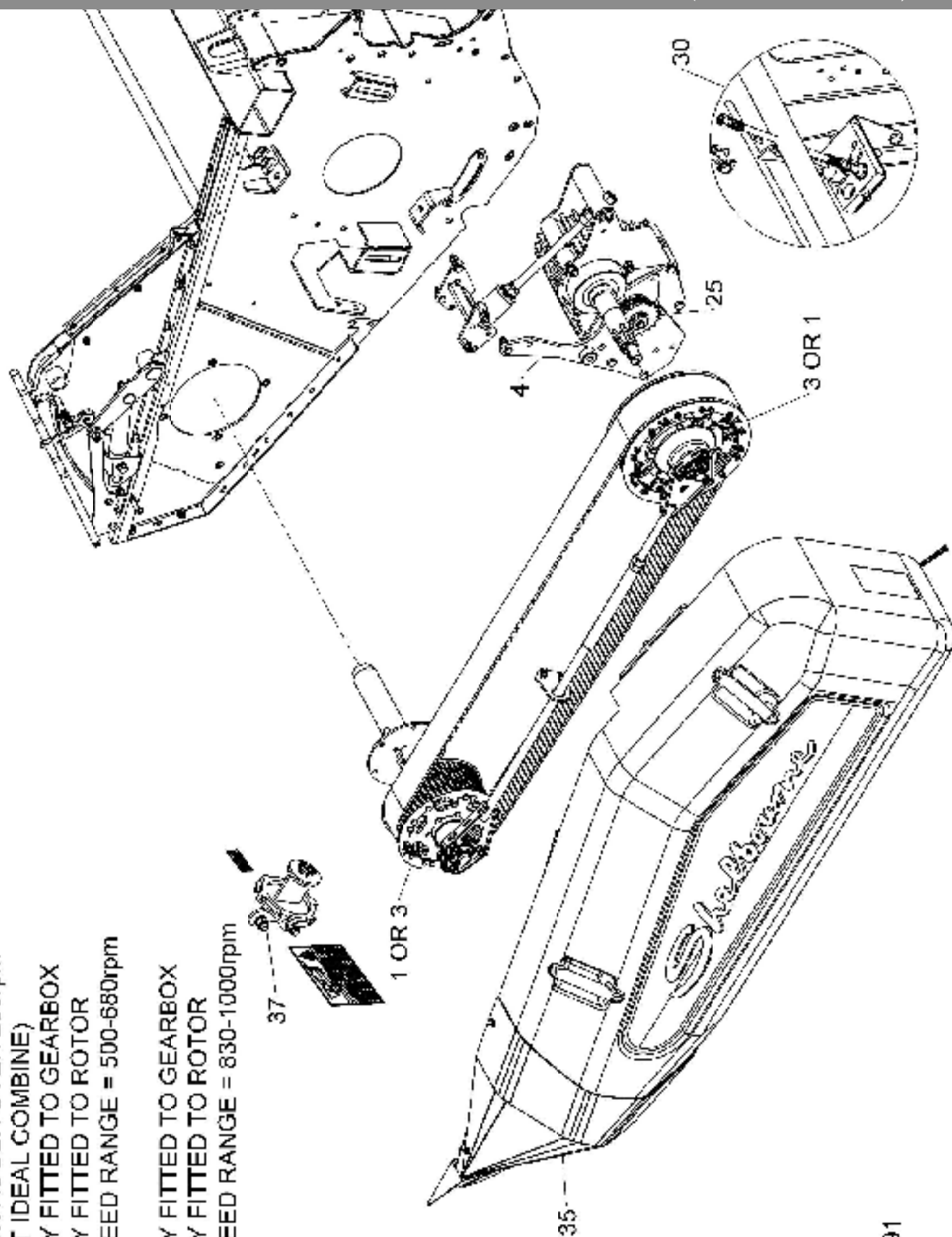
DO NOT RUN AUGER OVER 2000rpm
56T PULLEY FITTED TO GEARBOX
72T PULLEY FITTED TO MOTOR
MOTOR SPEED RANGE = 500-680rpm
72T PULLEY FITTED TO GEARBOX
56T PULLEY FITTED TO MOTOR
MOTOR SPEED RANGE = 820-1000rpm
FOR ALTERNATIVE MOTOR SPEEDS
ORDER
64T PULLEY, PART No 292864 01

ITEM 37 NOT INCLUDED
ONLY REQUIRED IF ADDITIONAL
PULLEY SUPPLIED

Shelbourne Reynolds Engineering Limited

DO NOT RUN AUGER OVER 200rpm
AGCO (NOT IDEAL COMBINE)
56T PULLEY FITTED TO GEARBOX
72T PULLEY FITTED TO ROTOR
ROTOR SPEED RANGE = 500-680rpm

72T PULLEY FITTED TO GEARBOX
56T PULLEY FITTED TO ROTOR
ROTOR SPEED RANGE = 830-1000rpm

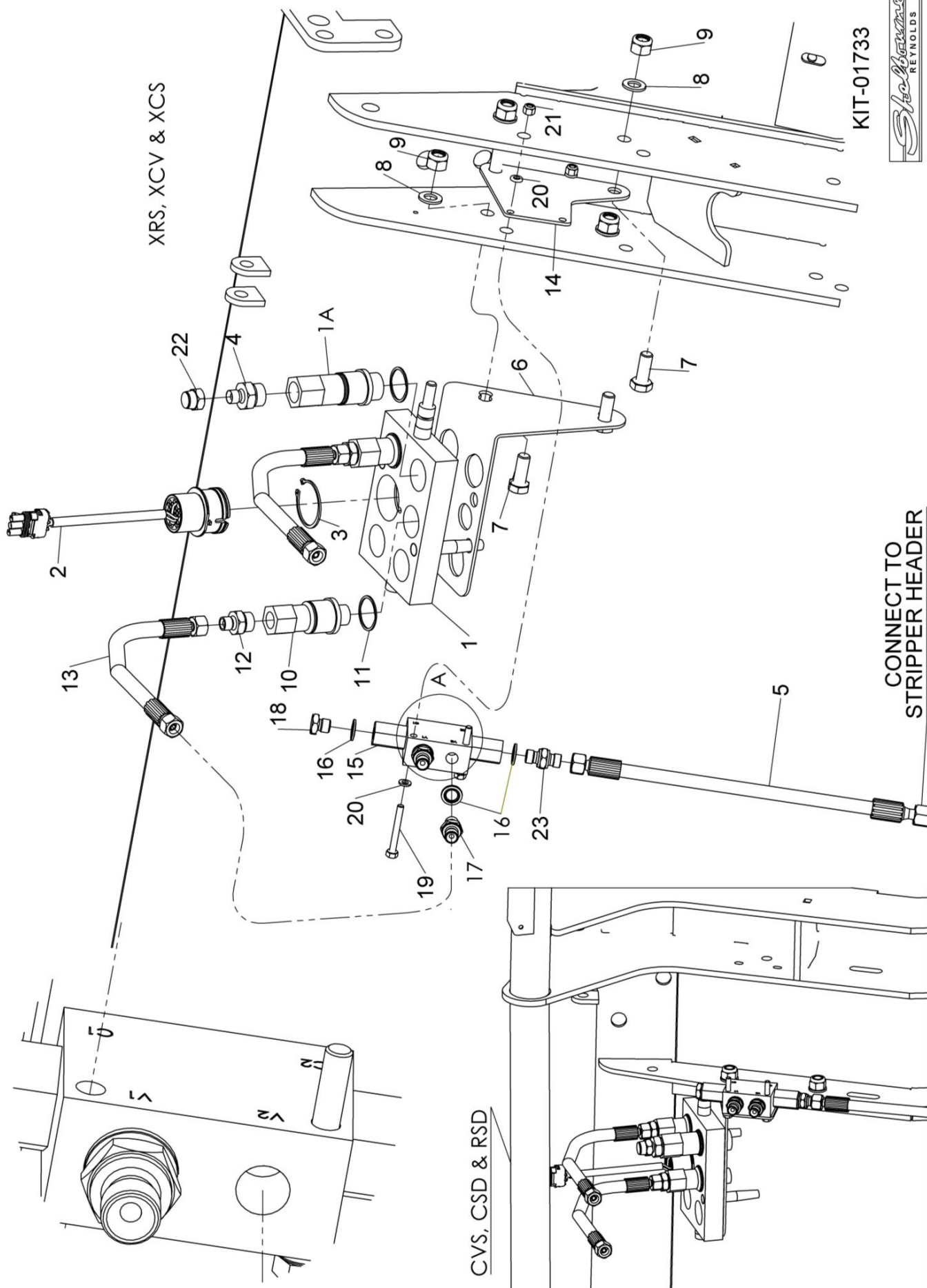


KIT-01491

Shelbourne Reynolds Engineering Limited

ASSY NUMBER: KIT-01733			ASSY DESCRIPTION: JD S SERIES VARIABLE FEEDER HYD KIT			
ITEM	PART NO	DESCRIPTION	QTY	ITEM	PART NO	DESCRIPTION
1	HQR-93000	JD MULTICOUPLER ASSY (PARKER)	1			
1a		C/W HQR-13027 COUPLER (UP TO 2022)				
OR	HQR-93000X	JD MULTICOUPLER PLATE (FASTER)	1			ITEM 2 ELECTRIC PLUG, SUPPLIED WITH JUMPER WIRING CONNECTED TO PIN 4 AND OTHER END LEFT UNCONNECTED.
2	197146 01X	JD LOOM & PLUG (NOT PINNED)	1			
OR	291794 01	JD LOOM & PLUG (CORN HEAD)	1			
OR	197146 01	JD LOOM & PLUG (RIGID HEADER)	1			LEAVE DISCONNECTED FOR UNKNOWN HEADER
OR	-	LOOM & PLUG NOT REQUIRED ON JD X9				
3	CIR-0450	EXT CIRCLIP 45mm	1			
4	HMA-0114	HYD ADAPT 7/8UNF x 1/4 BSP M/M (UPTO 2022)	1			CONNECT TO PIN 28 = CORN HEAD
5	HHAC07910	HYD HOSE	1			CONNECT TO PIN 16 = RIGID PLATFORM
6	197766 01	PARKING BRACKET	1			CONNECT TO PIN 17 = ROW CROP HEADER
7	HSS-0238	SET SCREW M12x30	4			
8	WSH-0018	PLAIN WASHER M12	8			REMOVE EXTRA COUPLER 1a (REEL RAISE/LOWER) FROM ITEM 1
9	NUT-0269	NYLOC NUT M12	4			
10	HQR-13026	COUPLER (PARKER)	2			
OR	HQR-13026A	COUPLER (FASTER) INC CIRCLIP	2			
11	CLP-00230	SNAP RING (PARKER)	2			
12	HAAAK0327	HYD ADAPT 3/4 UNF x 1/4 BSP M/M	2			FOR JD X9 USE KIT-01733B, DOES NOT INCLUDE ITEMS 2 & 3
13	HHAC09305	HYDRAULIC HOSE (MID 2024 & ON)	1			
OR	HHAC12005	HYDRAULIC HOSE (UP TO MID 2024)	1			
14	291792 01	VALVE MOUNTING PLATE	1			
15	HVB-27000	PO CHECK VALVE 1/4 BSP	1			FOR JD X9 ALSO SUPPLY KIT-01737, HYDRAULIC LOOM KIT
16	WSH-1005	DOWTY WASHER 1/4 BSP	4			
17	HMA-0052	HYD ADAPT 1/4 BSP M/M	2			
18	FITC00303	BLANKING PLUG 1/4 BSP M	1			
19	BLTA06320	BOLT M6x50	2			
20	WSH-0009	PLAIN WASHER M6	2			
21	NUT-0260	NYLOC NUT M6	4			
22	FITC00403	BLANKING CAP 1/4 BSP F (UPTO 2022)	2			
23	HAPAA0302	HYD RESTRICTOR 1/4 BSP M/M 0.8	1			

Shelbourne Reynolds Engineering Limited



Shelbourne Reynolds Engineering Limited

KIT-01736				AGCO HYDRAULIC MULTICOUPLER KIT (REEL AFT)			
ITEM	PART NO	DESCRIPTION	QTY	ITEM	PART NO	DESCRIPTION	QTY
1	199699 01	HYD COUPLER PLY ASSY (3 PORTS)	1				
2	198278 01	LOOM & PLUG ASSY AGCO	1				
3	CIF-0450	EXTERNAL CIRCLIP 45mm	1				
4	HQR-13026	COUPLING SMALL	1				
5	CLP-00230	SNAP RING	1				
6	HAAAK0327	HYDRAULIC FITTING	1				
7	HHAC10010	HYDRAULIC HOSE (MID 2024 & ON)	1				
OR	HHAC12010	HYDRAULIC HOSE (UPTO MID 2024)	1				
8	197766 01	PARKING BRACKET	1				
9	HSS-0238	BOLT	2				
10	WSH-0018	PLAIN WASHER M12 FORM A	2				
11	NUT-0269	NYLOC NUT M12	2				
12	197248 01	LOCATING BOSS	2				
13	SCW-0190	SOCKET CAP HEAD SCREW	2				

KIT-01736



Shelbourne Reynolds Engineering Limited

