

Fitting Instructions

Issue	Date	Changes
1	12/09/2024	Technical service bulletin created



Safety Warning

These Fitting Instructions are for informational purposes only. Shelbourne Reynolds makes no representation or warranty, express or implied, regarding the information provided herein. Under no circumstances will Shelbourne Reynolds have any liability to you for any loss or damage resulting from the use of these instructions or reliance on any information provided. It is extremely dangerous to carry out any work on a machine while it is under power. Never remove or reattach any parts unless the machine is fully turned off and disengaged.

Please read all safety instructions contained in your operators manual and observe all safety signs attached to the Stripper header. Your use of these instructions is solely at your own risk.  
Please use proper safety equipment at all times



*Refer to the Operators Manual for additional information and Safety procedures.*

*These instructions are worded if the kit was being installed while the header is mounted on a combine. Implement the safe stop procedure.*

Recommended Tools List

Sockets And Wrenches (+ attachments)	Tools/Equipment
10mm	Pop rivet gun
13mm	Drill
17mm	6mm, 7mm & 11mm drill bit
19mm	Grinder (cutting disc)
	KIT-19103 Fitting instructions

These fitting instructions are to be followed alongside the fitting instructions for KIT-19103.  
Please scan the QR code for instructions.

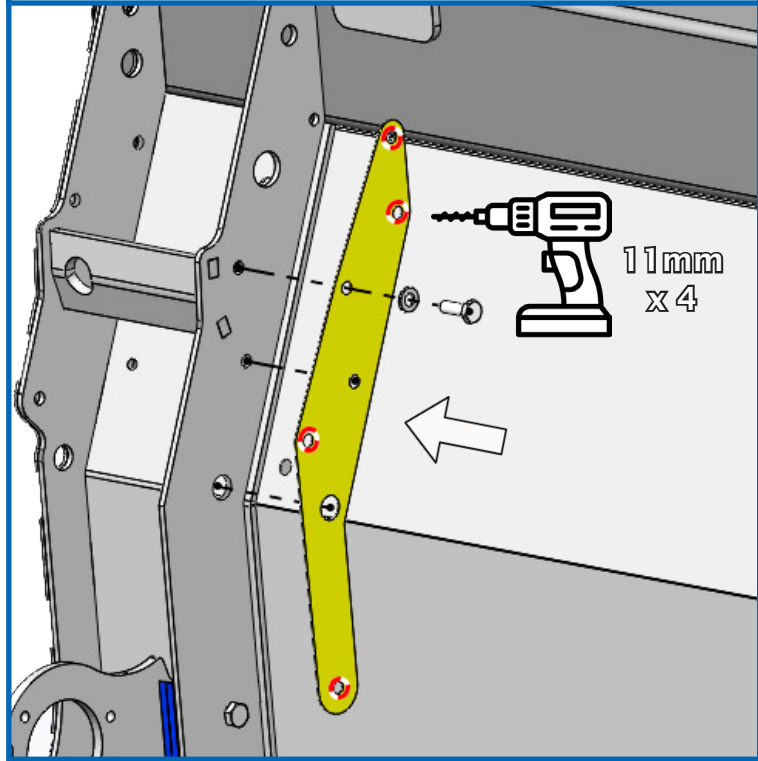


## Stripper Header XCV

KIT-19107 - 2014 - 2018

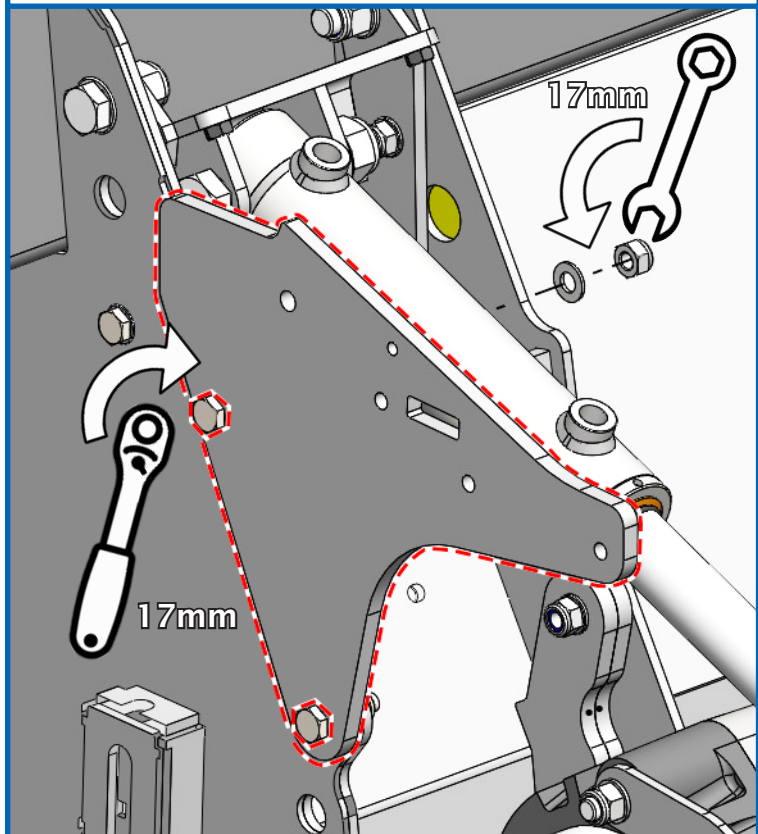
Follow the fitting instructions for KIT-19103 up to step 29.

1. Align drill template (item 12), and fix in place using existing bolts. Then drill 4 x 11mm holes.

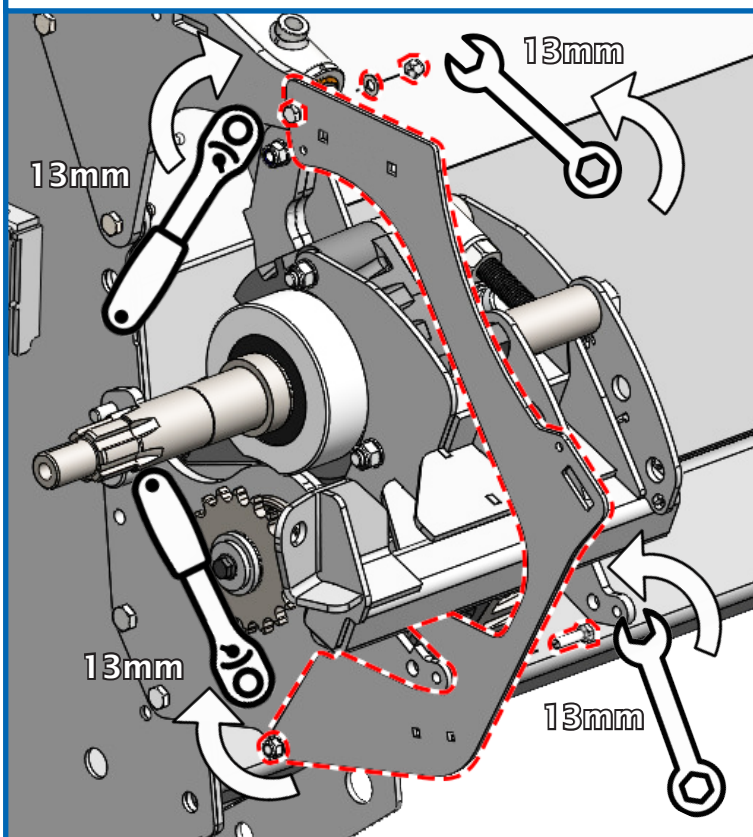


Continue to step 37 of the fitting instructions for KIT-19103.

2. Fit the new guard fixing plate (item 8).

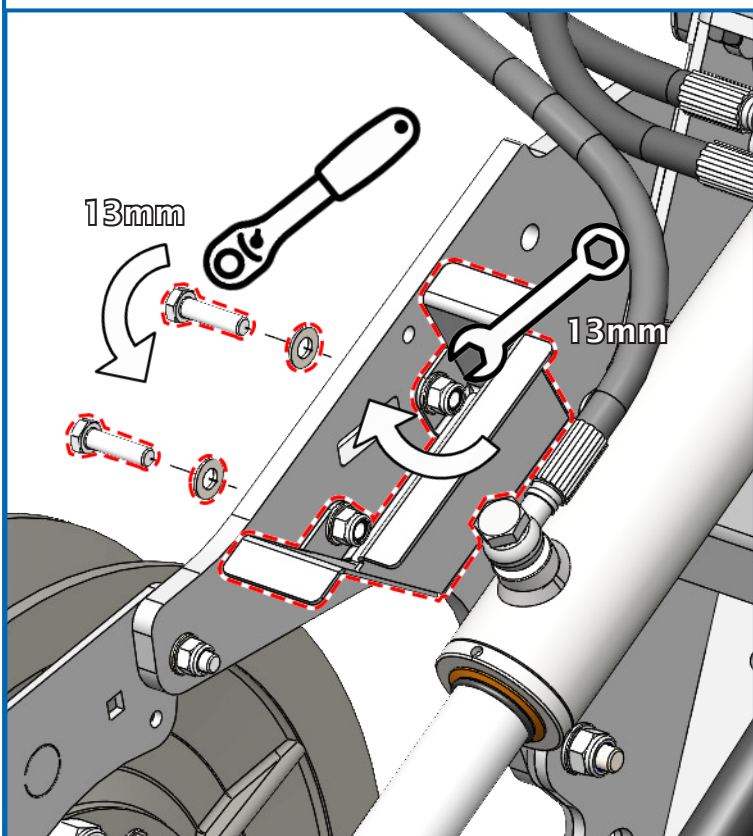


3. Fit the new guard mounting plate (item 7).

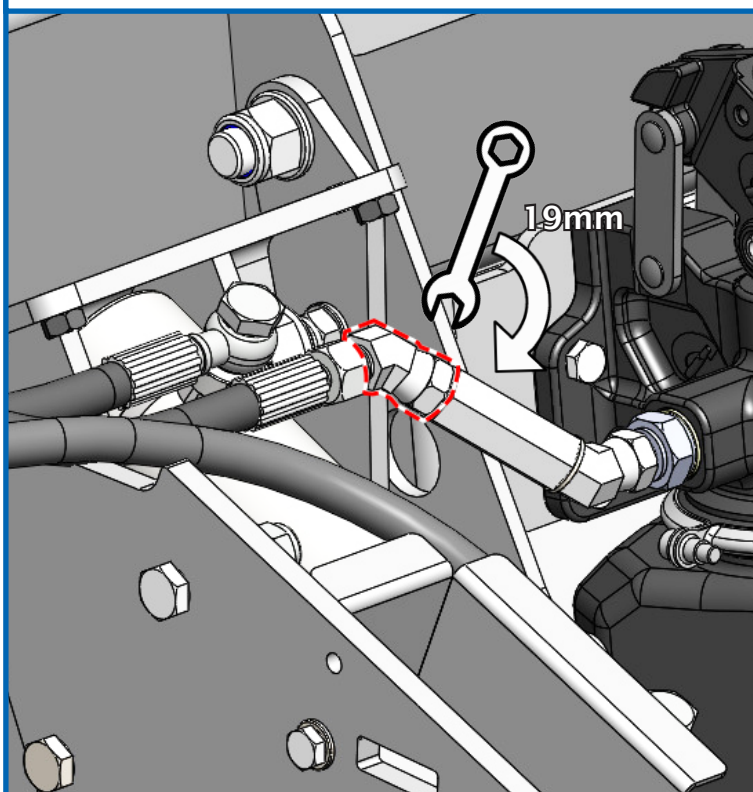


Continue to step 50 of the fitting instructions for KIT-19103.

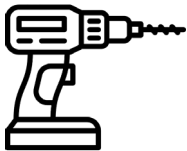
4. Fit the cover plate (item 6).



5. Fit the hose back to the hand pump with extra elbow fitting (item 5).

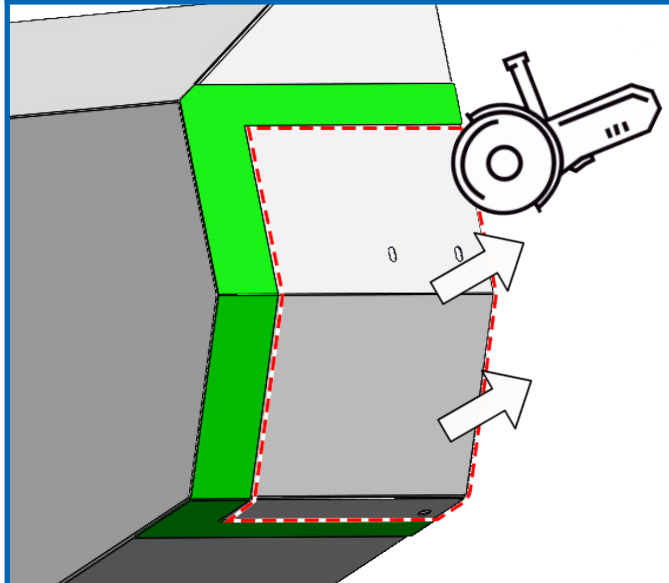


Continue to step 58 of the fitting instructions for KIT-19103.



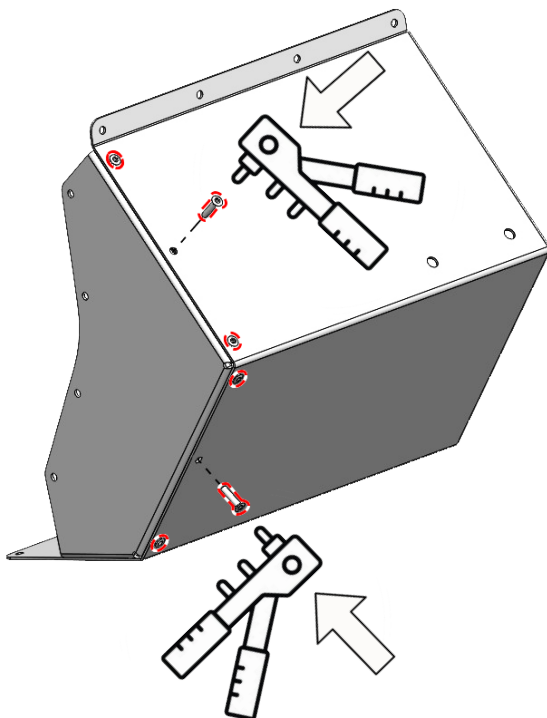
6mm  
x 4

6. Use the cutting template (item 13), to mark out the area on the guard that needs to be removed. Use a cutting disc to remove the area marked.

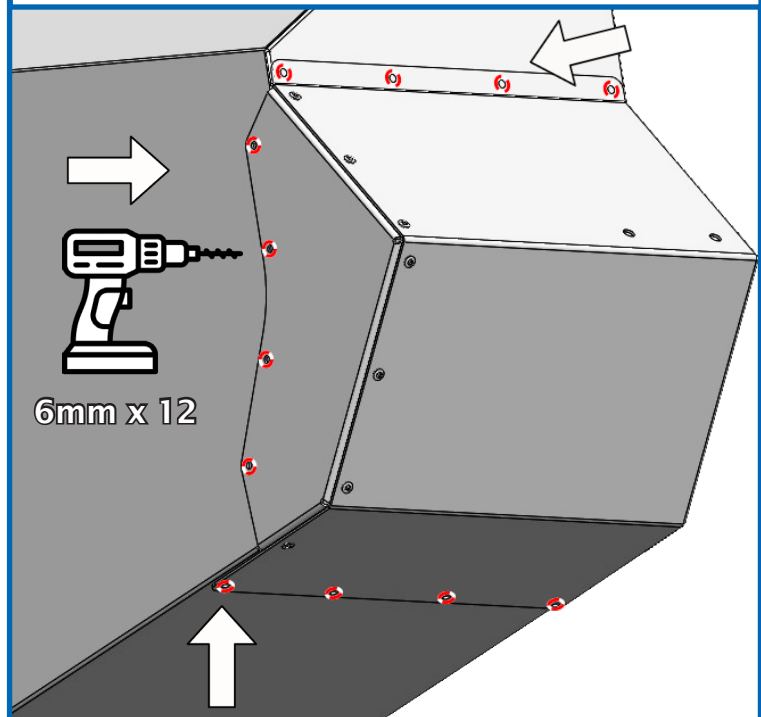


Guard cut off

7. Rivet together the guard side plate (item 9), and the drive guard extension (item 10), using 6mm rivets.



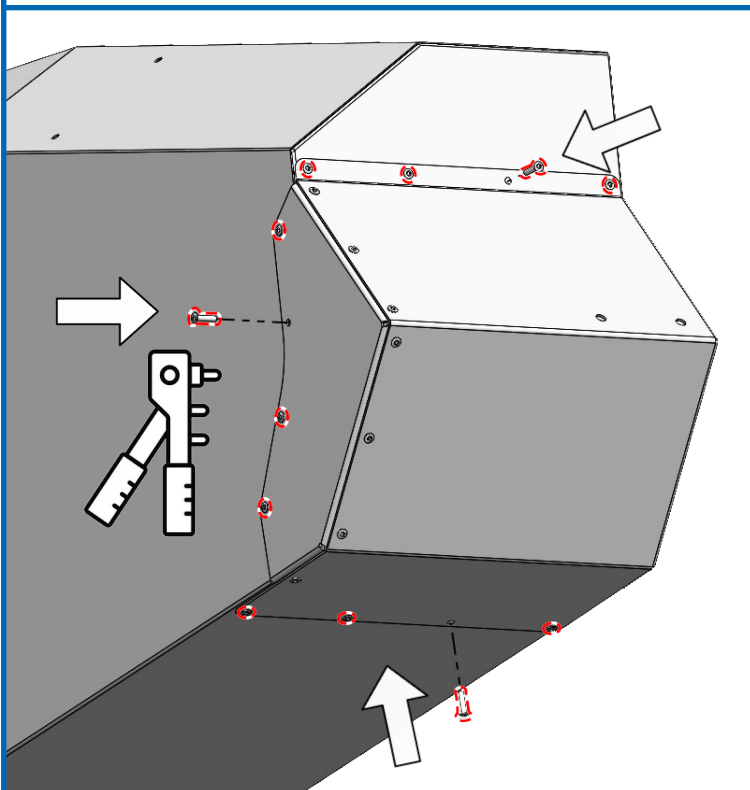
8. Mark out the holes needed to secure assembled extension guard to the main guard. Drill the marked holes using a 6mm drill bit.



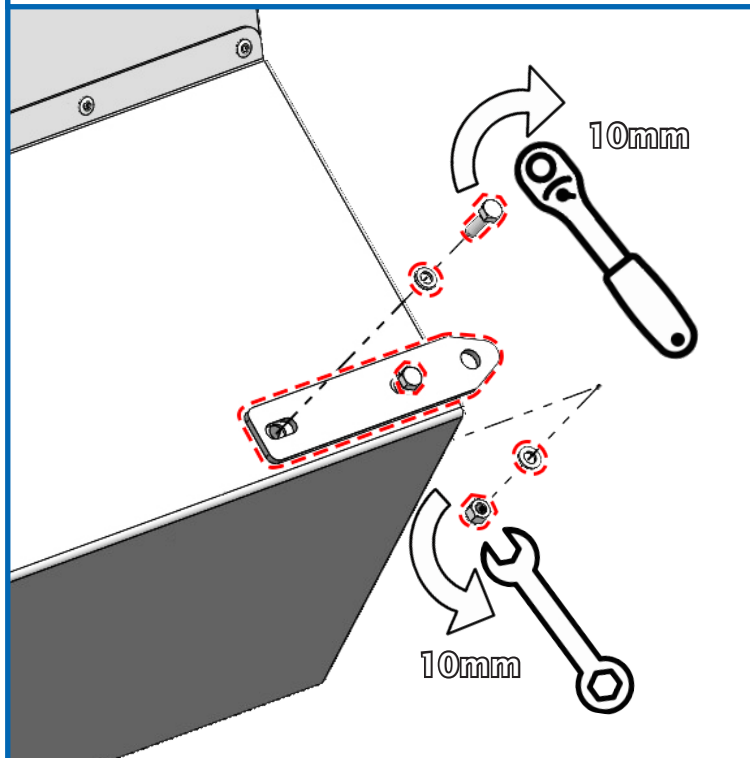
6mm x 12



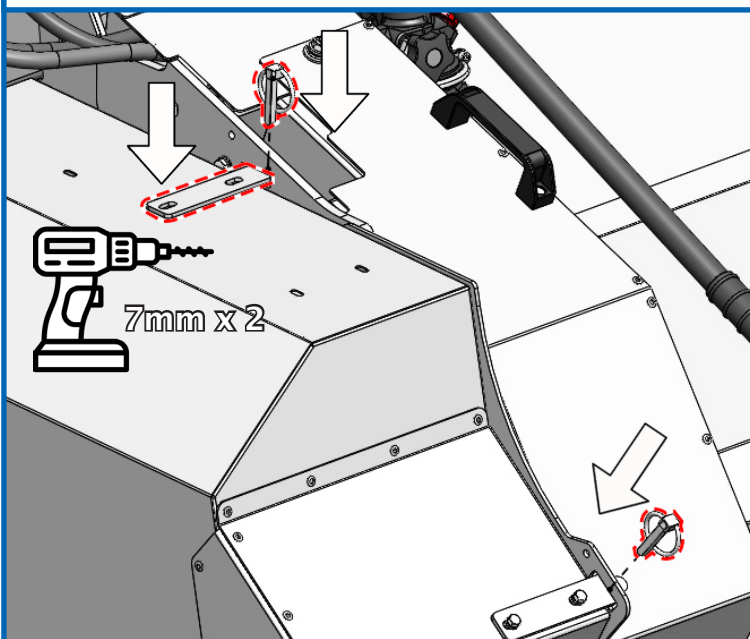
9. Fix the assembled extension guard to the main guard using 6mm pop rivets.



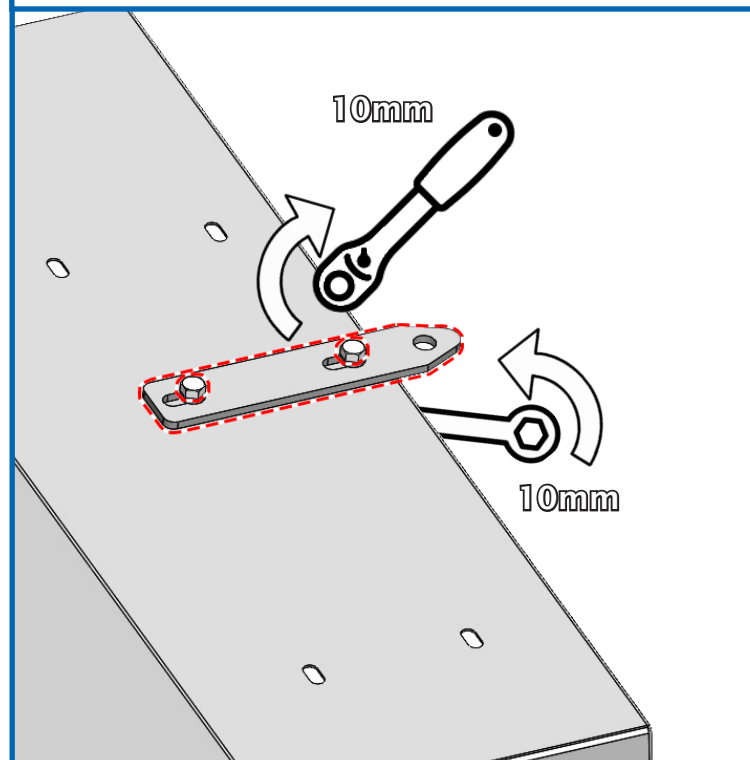
10. Fix one of the locating plates (item 1), to the main guard using two M6 x 20mm bolts, washers and nyloc nuts.



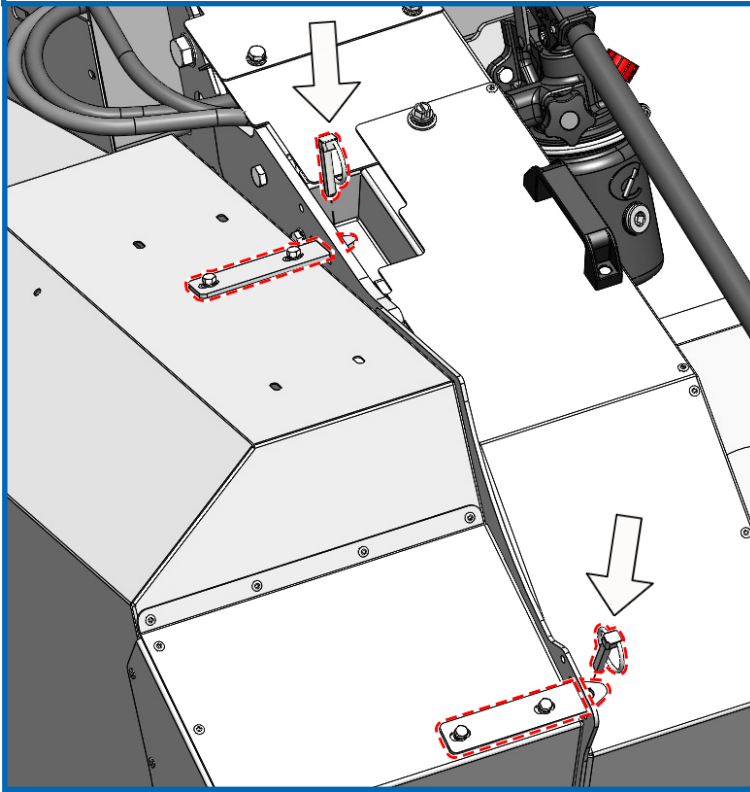
11. Secure the main guard to the machine using the locating plate and a pin. Then mark out the second locating plate which is secured using a pin to the guard fixing plate. Remove the main guard from the machine and drill the two holes using a 7mm drill bit.



12. Fix the second locating plate (item 1), to the main guard using two M6 x 20mm bolts, washers and nyloc nuts.



13. Reattach the main guard to the machine using the two locating plates and pins.

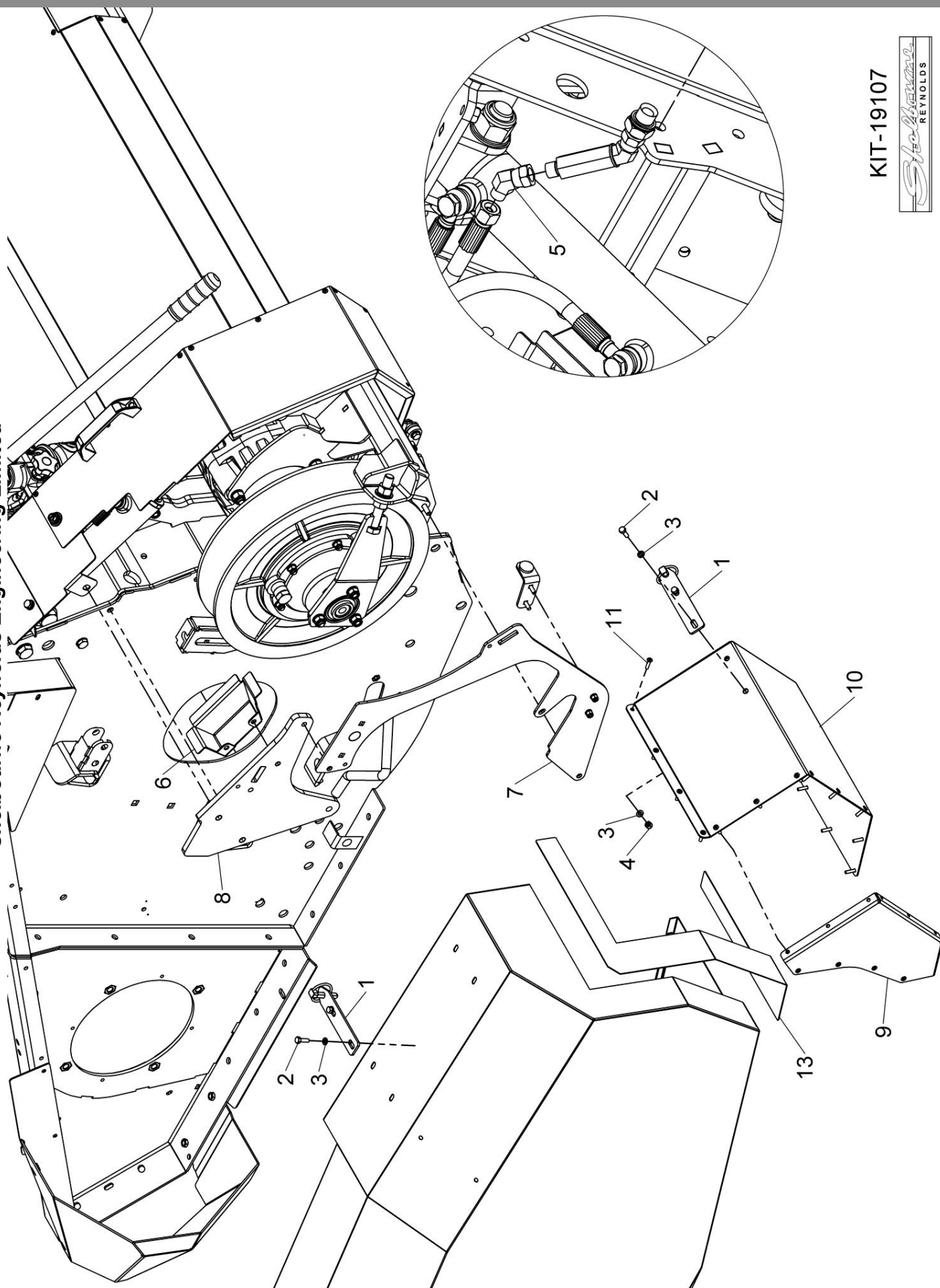


Continue with the fitting instructions for KIT-19103.

Shelbourne Reynolds Engineering Limited

ASSY NUMBER: KIT-19107				ASSY DESCRIPTION: 2014-18 HYD VS EXTRA PARTS KIT			
ITEM	PART NO	DESCRIPTION	QTY	ITEM	PART NO	DESCRIPTION	QTY
1	290539 01	LOCATING PLATE	2				
2	HSS-0086	SETSCREW (M6x20)	4				
3	WSH-0009	WASHER (M6 PLAIN)	8				
4	NUT-0260	NUT (M6 NYLOC)	4				
5	HASAA0303	EBLOW FITTING (1/4" 45°)	1				
6	292776 01	COVER PLATE	1				
7	292775 01	GUARD MTG PLATE	1				
8	292774 01	GUARD FIXING PLATE	1				
9	292845 01	GUARD SIDE PLATE	1				
10	292848 01	DRIVE GUARD EXTENSION	1				
11	POP-0006	POP RIVET (3/16" DIA x 5/8"LG)	19				
12							
13	292849 01	CUTTING TEMPLATE	1				

Shelbourne Reynolds Engineering Limited



KIT-19107

