

CLAAS/CAT

DRIVE AND ADAPTOR PLATE PARTS MANUAL



STRIPPER HEADER

Shelbourne Reynolds Engineering Ltd
Stanton
Bury St Edmunds
Suffolk
IP31 2AR
England

Telephone: 01359 250415
Fax: 01359 250464

Stores Direct : 01359 251231
Stores Direct: 01359 252031

Shelbourne Reynolds Inc.
Colby PO box 607
1250 S Country Club Drive
Colby , Kansas 67701
U.S.A.

Telephone: (785) 462 6299
Fax: (785) 462 6761

Issue 13

20/08/2019

ORDERING SPARE PARTS

IMPORTANT

Your Stripper Header is made up of a Machine assembly number (common parts), specific sub assemblies and also customer optional build kits. The machine, sub assemblies and optional kit numbers are listed in the front pages of your Operators manual. If you do not have these numbers please contact Shelbourne Reynolds Parts Department direct on (telephone) Stanton - (01359) 251231 or Colby - (785) 462 6299.

To ensure that you order the correct part from your SRE dealer please use the following procedure.

ALWAYS QUOTE THE MACHINE AND SERIAL NUMBERS WHEN ORDERING.

The year and/or serial number of the machine may determine the correct sub assembly.

Refer to the Parts Manuals front page/s, listing the machine assemblies. Select the correct machine assembly number which is printed in the top left corner of the page (starting with 1965_ _ 01), This machine number can also be taken from the Stripper Header identification plate located on the rear left hand corner of the machine.

On this page you will find the parts listing for the common parts for every configuration of that machine assembly number. You will find the corresponding drawing by either looking at the facing page or progressing through the manual to the next drawing. The drawings indicate the components by item numbers, which you will find, are repeated in the left-hand side of your parts listing, and therefore referring to the correct part.

Note all parts will not be found listed below the machine number. Other parts will be from specific sub assemblies and optional kits. These sub assemblies and kits will be found in numerical order further through the manual. Sub assemblies start with 1960_ _ 01 and kits start with KIT- 19 _ _ _.

The parts listing for adaptor plates, drive kits and hydraulic couplings can be found in the following manuals;

Drive & Adaptor Plate Manuals

| | |
|--------------------|-----------|
| Massey Ferguson | MAN-03172 |
| Claas/Cat | MAN-03173 |
| John Deere | MAN-03174 |
| New Holland | MAN-03175 |
| Laverda | MAN-03176 |
| Gleaner/Challenger | MAN-03177 |
| Case IH | MAN-03178 |

List Of Kit Numbers

Adaptor Plates 5

| | | |
|-----------|--|----|
| 196555 01 | Adaptor Plate Assembly Claas Lexion | 7 |
| 196555 10 | Adaptor Plate Assembly Claas (Dom) Standard | 8 |
| 196555 11 | Adaptor Plate Assembly Claas (Dom) Auto Contour | 9 |
| KIT-00630 | Adaptor Plate Claas Lexion | 10 |
| KIT-00638 | Adaptor Plate Sub Assembly Claas | 12 |
| KIT-00807 | Fixing Kit (Claas Standard Elevation) | 14 |
| KIT-00808 | Fixing Kit | 16 |

Drive Options 19

| | | |
|------------|--|----|
| 196549 015 | Drive Kit Claas (Pre Lex) C/RVS (18ft) | 20 |
| 196549 016 | Drive Kit Claas (Pre Lex) C/RVS (20ft) | 22 |
| 196549 018 | Drive Kit Claas (Pre Lex) C/RVS (22-32ft) | 24 |
| 196549 185 | Drive Kit Claas Lexion C/RVS/RSD (18ft) | 26 |
| 196549 186 | Drive Kit Claas Lexion C/RVS/RSD (20ft) | 28 |
| 196549 188 | Drive Kit Claas Lexion C/RVS/RSD (22-42ft) | 30 |
| KIT-00931 | PTO Support Kit | 32 |

Hydraulic Kits 35

| | | |
|-----------|--|----|
| KIT-01717 | Claas Lexion 400 Hydraulic Kit | 36 |
| KIT-01721 | Claas Hydraulic Kit (RH Position Screw Type) | 38 |
| KIT-01722 | Claas Hydraulic Kit (RH Position 3/8”M) | 40 |
| KIT-01723 | Claas Hydraulic Kit (RH Position 1/2”M) | 42 |
| KIT-01728 | Claas Lexion Hydraulic Multicoupler Kit | 44 |
| KIT-01732 | Claas Lexion Hydraulic Multicoupler Kit | 46 |

ADAPTOR PLATES

Shelbourne Reynolds Engineering Limited

| | | | | | | | |
|------------------------|-----------|-------------------|-----|---|---------|-------------|-----|
| ASSY NUMBER: 196555 01 | | | | ASSY DESCRIPTION: ADAPTOR PLATE ASSY CLAAS LEXION | | | |
| ITEM | PART NO | DESCRIPTION | QTY | ITEM | PART NO | DESCRIPTION | QTY |
| 1 | KIT-00630 | ADAPTOR PLATE SUB | 1 | | | | |

Shelbourne Reynolds Engineering Limited

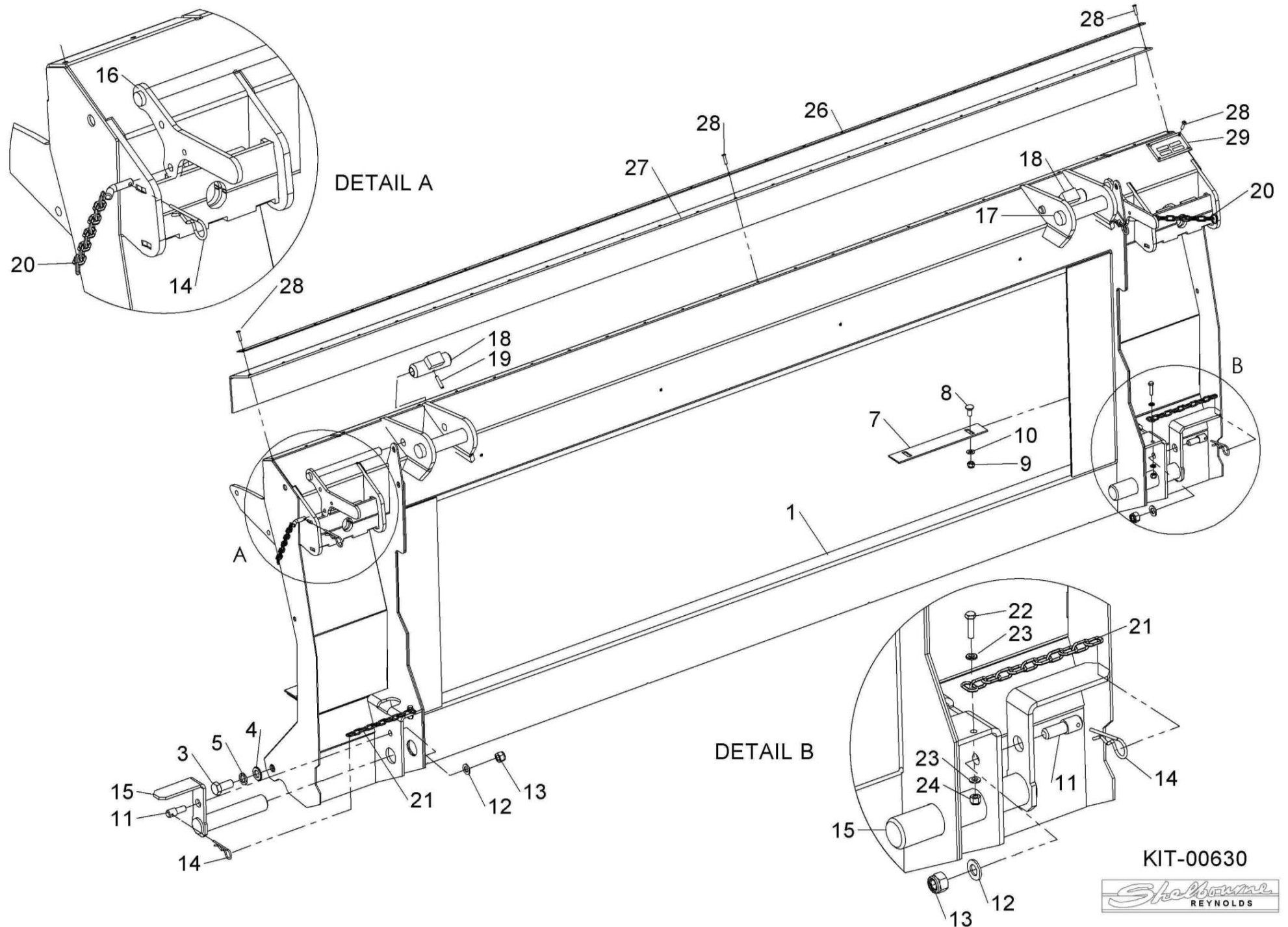
| | | | | | | | |
|------------------------|-----------|-------------------|-----|---|---------|-------------|-----|
| ASSY NUMBER: 196555 10 | | | | ASSY DESCRIPTION: ADAPTOR PLATE ASSY CLAAS (DOM) STANDARD | | | |
| ITEM | PART NO | DESCRIPTION | QTY | ITEM | PART NO | DESCRIPTION | QTY |
| 1 | KIT-00638 | ADAPTOR PLATE SUB | 1 | | | | |
| 2 | KIT-00807 | FIXING KIT | 1 | | | | |

Shelbourne Reynolds Engineering Limited

| ASSY NUMBER: 196555 11 | | | | ASSY DESCRIPTION: PLATE ASSY CLAAS (DOM) AUTO CONT | | | |
|------------------------|-----------|-------------------|-----|--|---------|-------------|-----|
| ITEM | PART NO | DESCRIPTION | QTY | ITEM | PART NO | DESCRIPTION | QTY |
| 1 | KIT-00638 | ADAPTOR PLATE SUB | 1 | | | | |
| 2 | KIT-00808 | FIXING KIT | 1 | | | | |

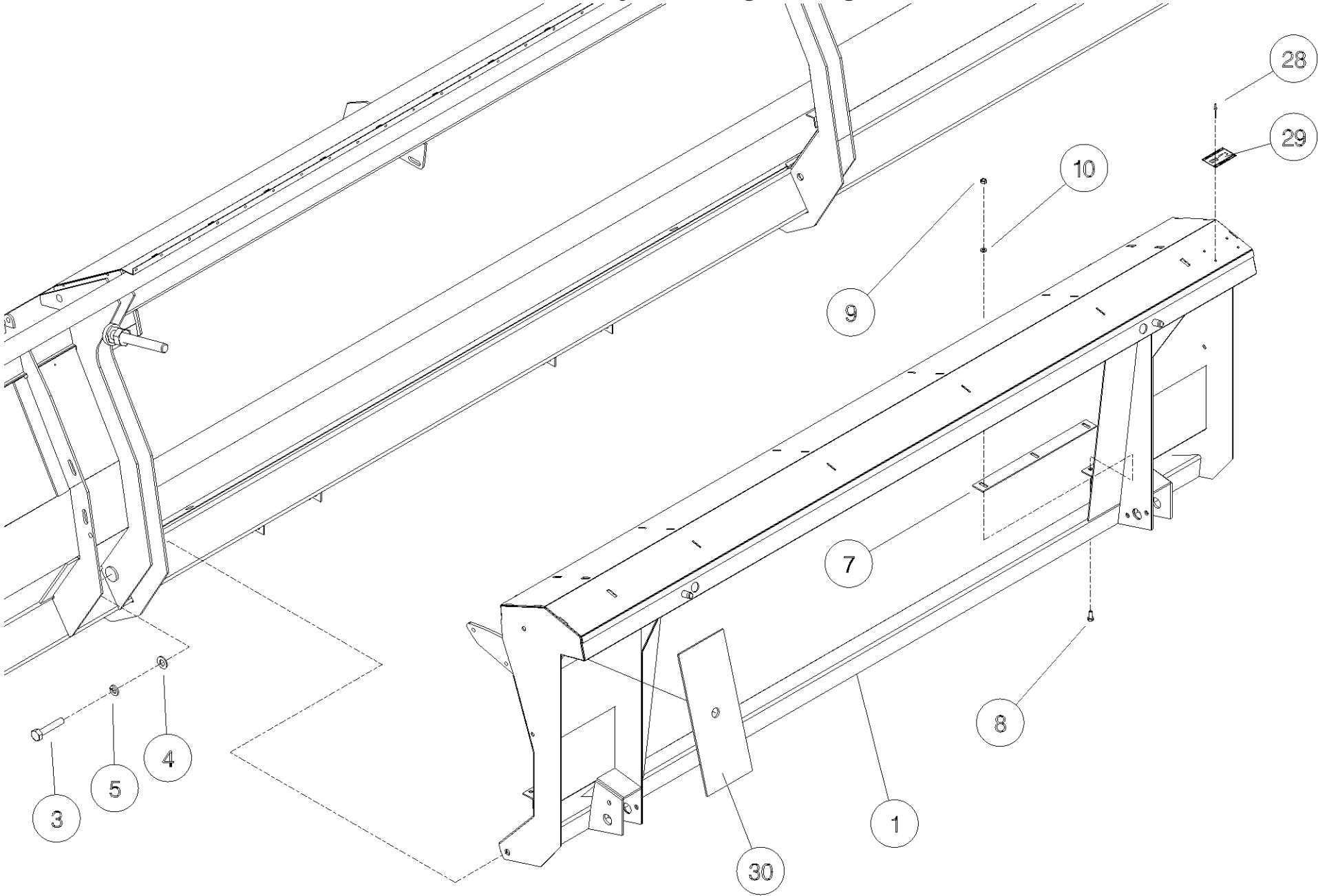
Shelbourne Reynolds Engineering Limited

| ASSY NUMBER: KIT-00630 | | | | ASSY DESCRIPTION: ADAPTOR PLATE CLAAS (LEXION) | | | |
|------------------------|-----------|----------------------------------|-------|--|---------|-------------|-----|
| ITEM | PART NO | DESCRIPTION | QTY | ITEM | PART NO | DESCRIPTION | QTY |
| 1 | 194246 01 | FRAME WELD ASSY | 1 | | | | |
| 2 | | | | | | | |
| 3 | HSS-0315 | SET SCREW | 2 | | | | |
| 4 | WSH-0024 | PLAIN WASHER | 2 | | | | |
| 5 | WSH-0070 | SPRING WASHER | 2 | | | | |
| 6 | | | | | | | |
| 7 | 194239 02 | SCRAPER (UP TO 2019) | 2 | | | | |
| 8 | BLT-4710 | COACH BOLT (UPTO 2019) | 4 | | | | |
| 9 | NUT-0263 | NYLOC NUT (UP TO 2019) | 4 | | | | |
| 10 | WSH-0012 | PLAIN WASHER (UP TO 2019) | 4 | | | | |
| 11 | 192204 01 | PIN | 2 | | | | |
| 12 | WSH-0018 | PLAIN WASHER | 2 | | | | |
| 13 | NUT-0269 | NYLOC NUT | 2 | | | | |
| 14 | RCL-0015 | R CLIP | 4 | | | | |
| 15 | 192198 04 | LOWER LOCKING PIN | 2 | | | | |
| 16 | 193153 01 | TOP LOCKING LEVER LH | 1 | | | | |
| 17 | 193153 02 | TOP LOCKING LEVER RH | 1 | | | | |
| 18 | 193154 01 | TOP LOCK | 2 | | | | |
| 19 | PIN-1923 | ROLL PIN | 2 | | | | |
| 20 | 195878 01 | LOCKING HANDLE ASSY | 2 | | | | |
| 21 | CHN-0145 | CHAIN | 0.17m | | | | |
| 21 | CHN-0145 | CHAIN | 0.17m | | | | |
| 21 | CHN-0145 | CHAIN | 0.17m | | | | |
| 21 | CHN-0145 | CHAIN | 0.17m | | | | |
| 22 | HSS-0088 | HEX HD BOLT | 4 | | | | |
| 23 | WSH-0009 | PLAIN WASHER | 8 | | | | |
| 24 | NUT-0260 | NYLOC NUT | 4 | | | | |
| 25 | | | | | | | |
| 26 | 194493 01 | CLAMP STRIP (OPTIONAL) | 1 | | | | |
| 27 | 194545 01 | RUBBER SEAL (OPTIONAL) | 1 | | | | |
| 28 | POP-0006 | POP RIVET (OPTIONAL) | 25 | | | | |
| 29 | 134024 05 | IDENTIFICATION PLATE (UPTO 2019) | 1 | | | | |



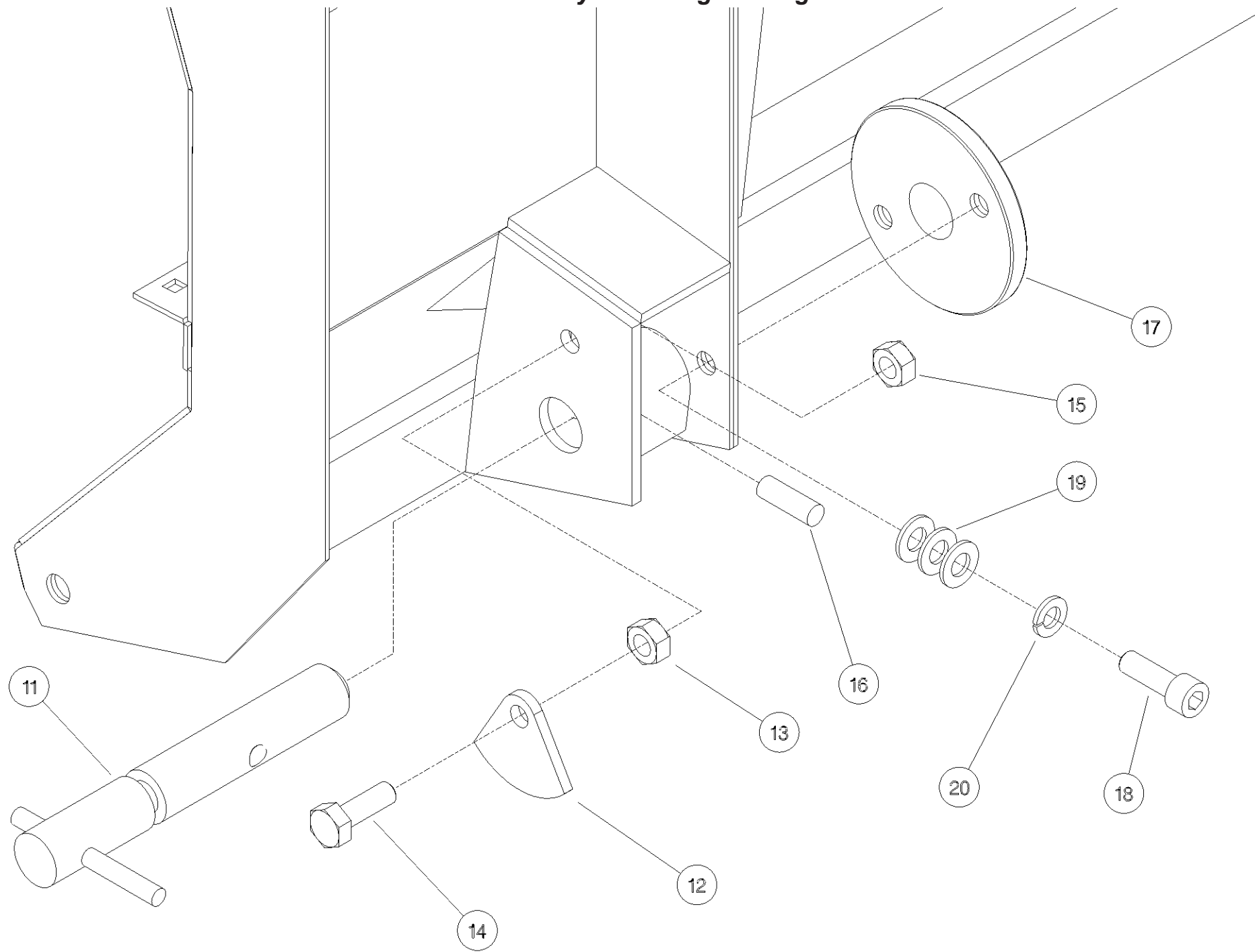
Shelbourne Reynolds Engineering Limited

| ASSY NUMBER: KIT-00638 | | | | ASSY DESCRIPTION: ADAPT.PL.SUB.ASSY CLAAS | | | |
|------------------------|-----------|----------------------------|-----|---|---------|-------------|-----|
| ITEM | PART NO | DESCRIPTION | QTY | ITEM | PART NO | DESCRIPTION | QTY |
| 1 | 195342 01 | CLAAS (DOM)ADP PLATE FRAME | 1 | | | | |
| 2 | | | | | | | |
| 3 | HSS-0315 | SET SCREW | 2 | | | | |
| 4 | WSH-0024 | WASHER | 2 | | | | |
| 5 | WSH-0070 | WASHER | 2 | | | | |
| 6 | | | | | | | |
| 7 | 195330 01 | SCRAPER (UPTO 2009) | 2 | | | | |
| 8 | BLT-4710 | COACH BOLT(UPTO 2009) | 6 | | | | |
| 9 | NUT-0263 | NYLOC NUT(UPTO 2009) | 6 | | | | |
| 10 | WSH-0012 | PLAIN WASHER(UPTO 2009) | 6 | | | | |
| 11 | | | | | | | |
| 12 | | | | | | | |
| 13 | | | | | | | |
| 14 | | | | | | | |
| 15 | | | | | | | |
| 16 | | | | | | | |
| 17 | | | | | | | |
| 18 | | | | | | | |
| 19 | | | | | | | |
| 20 | | | | | | | |
| 21 | | | | | | | |
| 22 | | | | | | | |
| 23 | | | | | | | |
| 24 | | | | | | | |
| 25 | | | | | | | |
| 26 | | | | | | | |
| 27 | | | | | | | |
| 28 | POP-0006 | POP RIVET | 4 | | | | |
| 29 | 134024 05 | SERIAL No PLATE | 1 | | | | |
| 30 | 195093 01 | ADAPT.PLT.DUST COVER | 2 | | | | |



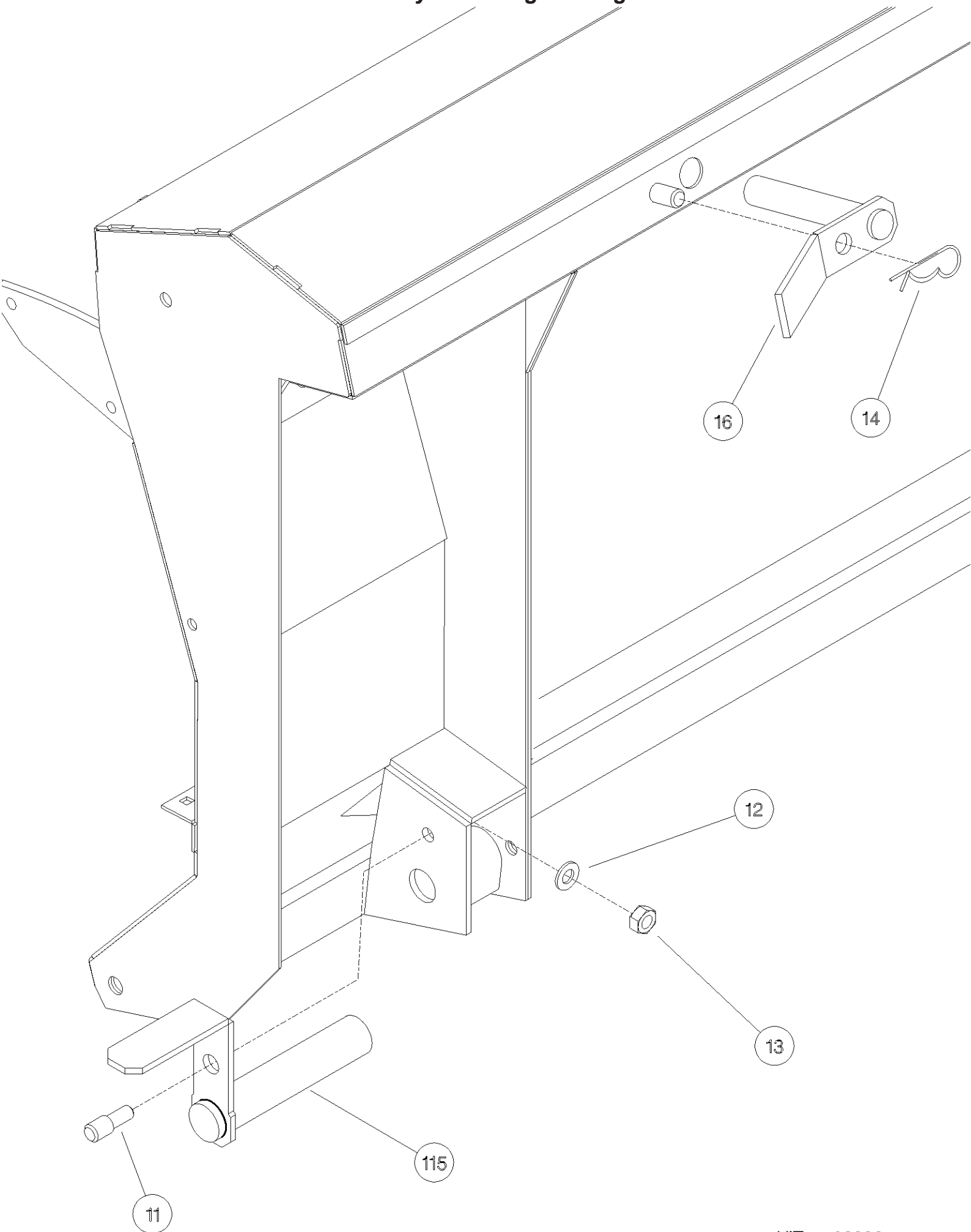
Shelbourne Reynolds Engineering Limited

| ASSY NUMBER: KIT-00807 | | | | ASSY DESCRIPTION: FIXING KIT (CLAAS STD.ELEV.) | | | |
|------------------------|-----------|----------------|-----|--|---------|-------------|-----|
| ITEM | PART NO | DESCRIPTION | QTY | ITEM | PART NO | DESCRIPTION | QTY |
| 1 | | | | 42 | | | |
| 2 | | | | 43 | | | |
| 3 | | | | 44 | | | |
| 4 | | | | 45 | | | |
| 5 | | | | 47 | | | |
| 6 | | | | 48 | | | |
| 7 | | | | 49 | | | |
| 8 | | | | 50 | | | |
| 9 | | | | 51 | | | |
| 10 | | | | 52 | | | |
| 11 | 130088 01 | LOCKING HANDLE | 2 | 53 | | | |
| 12 | 210125 01 | LOCKING CAM | 2 | 54 | | | |
| 13 | NUT-0170 | PLAIN NUT | 2 | 55 | | | |
| 14 | HSS-0250 | SET SCREW | 2 | 56 | | | |
| 15 | NUT-0269 | NYLOC NUT | 2 | 57 | | | |
| 16 | PIN-1935 | ROLL PIN | 2 | 58 | | | |
| 17 | 130112 01 | GUIDE DISC | 2 | 59 | | | |
| 18 | SCW-0243 | CAP HEAD SCREW | 4 | 60 | | | |
| 19 | WSH-0018 | PLAIN WASHER | 22 | 61 | | | |
| 20 | WSH-0065 | SPRING WASHER | 4 | 62 | | | |
| 21 | | | | 63 | | | |
| 22 | | | | 64 | | | |
| 23 | | | | 65 | | | |
| 24 | | | | 66 | | | |
| 25 | | | | 67 | | | |
| 26 | | | | 68 | | | |
| 27 | | | | 69 | | | |
| 29 | | | | 70 | | | |
| 30 | | | | 71 | | | |
| 31 | | | | 72 | | | |
| 32 | | | | 73 | | | |
| 33 | | | | 74 | | | |
| 34 | | | | 75 | | | |
| 35 | | | | 76 | | | |
| 36 | | | | 77 | | | |
| 37 | | | | 78 | | | |
| 38 | | | | 79 | | | |
| 39 | | | | 80 | | | |
| 40 | | | | 81 | | | |
| 41 | | | | 82 | | | |



Shelbourne Reynolds Engineering Limited

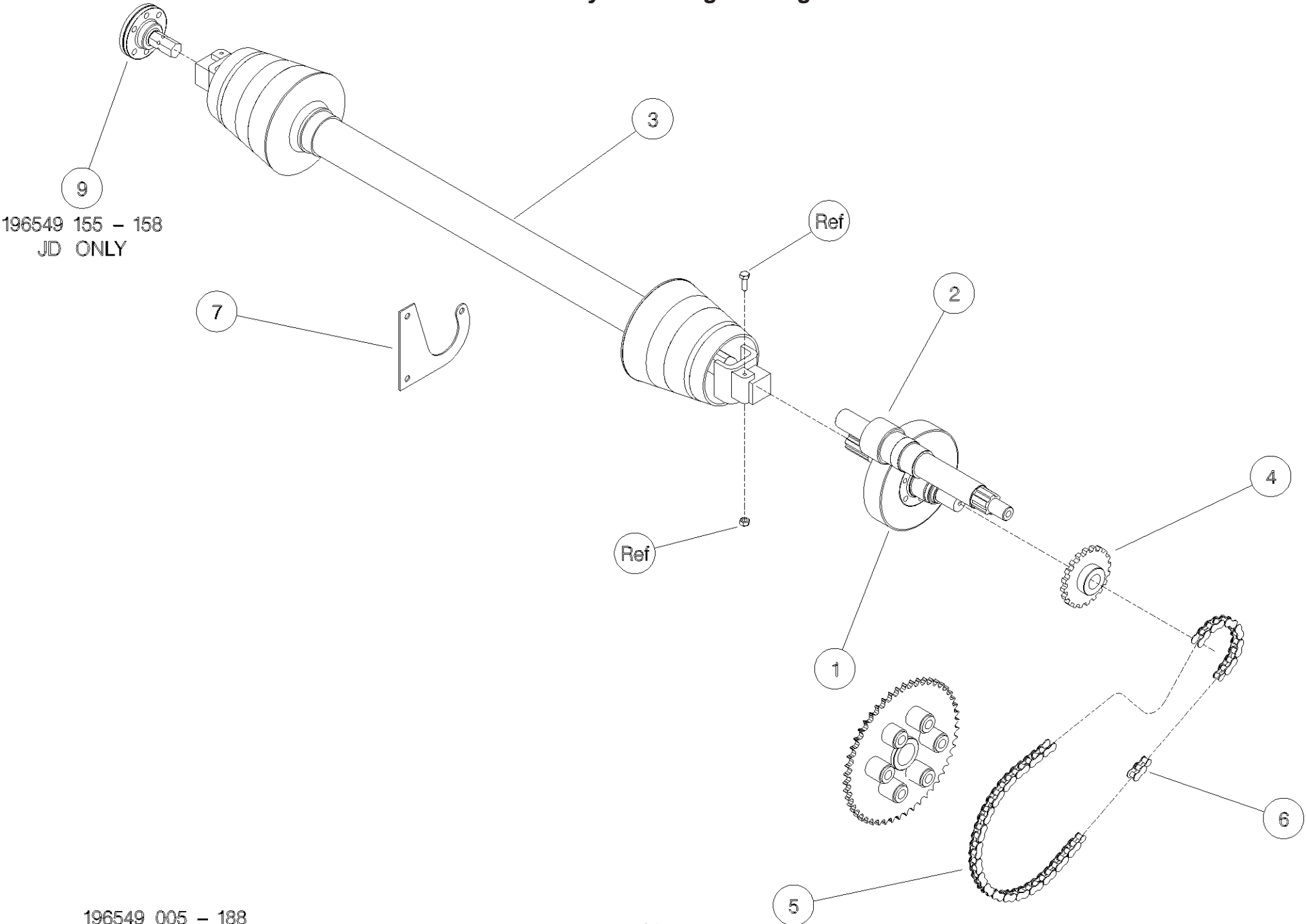
| ASSY NUMBER: KIT-00808 | | | | ASSY DESCRIPTION: ADAPT.PL.FIXING KIT | | | |
|------------------------|-----------|-------------------|-----|---------------------------------------|---------|-------------|-----|
| ITEM | PART NO | DESCRIPTION | QTY | ITEM | PART NO | DESCRIPTION | QTY |
| 1 | | | | | | | |
| 2 | | | | | | | |
| 3 | | | | | | | |
| 4 | | | | | | | |
| 5 | | | | | | | |
| 6 | | | | | | | |
| 7 | | | | | | | |
| 8 | | | | | | | |
| 9 | | | | | | | |
| 10 | | | | | | | |
| 11 | 192204 01 | PIN | 2 | | | | |
| 12 | WSH-0018 | PLAIN WASHER | 2 | | | | |
| 13 | NUT-0269 | NUT | 2 | | | | |
| 14 | CLP-00103 | R CLIP | 4 | | | | |
| 15 | 192198 01 | LOWER LOCKING PIN | 2 | | | | |
| 16 | 192201 01 | TOP LOCKING PIN | 2 | | | | |
| | | | | | | | 2 |
| | | | | | | | 2 |
| | | | | | | | 2 |
| | | | | | | | 4 |
| | | | | | | | 2 |
| | | | | | | | 2 |



DRIVE OPTIONS

Shelbourne Reynolds Engineering Limited

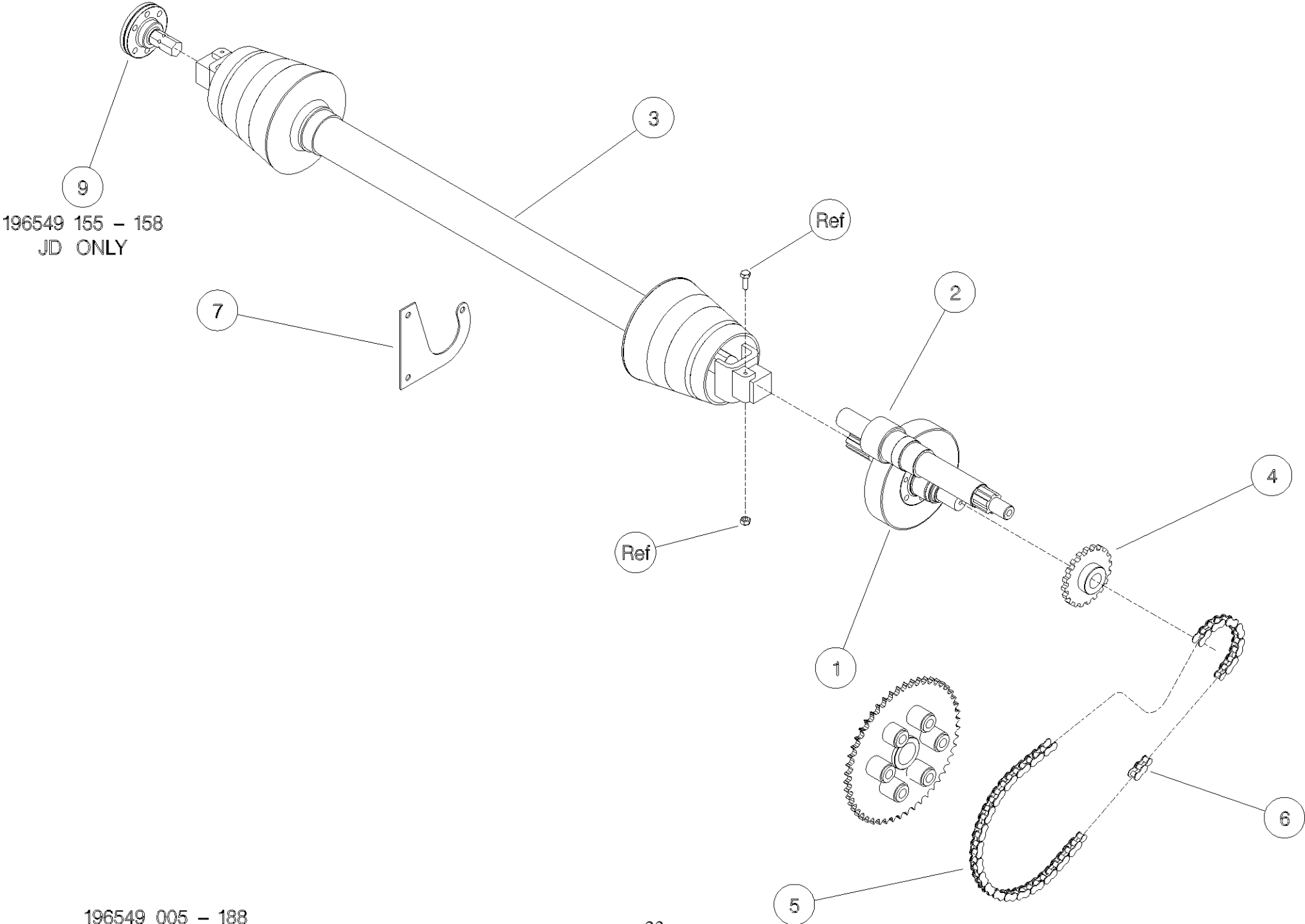
| ASSY NUMBER: 196549 015 | | | | ASSY DESCRIPTION: DRIVE KIT CLAAS (PRE LEX.)C/RVs (18') | | | |
|-------------------------|-----------|--|-----|---|---------|-------------|-----|
| ITEM | PART NO | DESCRIPTION | QTY | ITEM | PART NO | DESCRIPTION | QTY |
| 1 | 192592 01 | HELICAL GEAR (42T) | 1 | | | | |
| OR | 192592 13 | WITH ROTOR GEARBOX INPUT GEAR (33t) WITHOUT ROTOR GEARBOX | 1 | | | | |
| 2 | 193599 01 | PINION 27T | 1 | | | | |
| OR | 193599 13 | WITH ROTOR GEARBOX PINION (36t) WITHOUT ROTOR GEARBOX OR 65mm SHAFT | 1 | | | | |
| 3 | PTO-26013 | PTO DRIVE NHTR (18'/5.4m) | 1 | | | | |
| 3A | PTO-00080 | PTO YOKE-COMBINE (SPARES) | 1 | | | | |
| 3B | PTO-00083 | PTO CROSS BEARING (SPARES) | A/R | | | | |
| 3C | PTO-00119 | PTO CLUTCH-HEADER (SPARES) | 1 | | | | |
| 3D | PTO-00093 | PTO GUARD ASSY (SPARES) | 1 | | | | |
| REF | BLTA10380 | SHEARBOLT | A/R | | | | |
| REF | NUT-0265 | NYLOC NUT | A/R | | | | |
| 4 | 192768 08 | SPROCKET ASSY 13T | 1 | | | | |
| 5 | CHN-01990 | CHAIN 93 LINKS + JOINER (FIXED GEARBOX MACHINES) | 1 | | | | |
| OR | CHN-01920 | CHAIN 101 LINKS (PIVOTING GEARBOX MACHINES) | 1 | | | | |
| 6 | CHN-01901 | JOINING LINK | 1 | | | | |
| 7 | KIT-00931 | PTO SUPPORT KIT | 1 | | | | |



196549 155 – 158
JD ONLY

Shelbourne Reynolds Engineering Limited

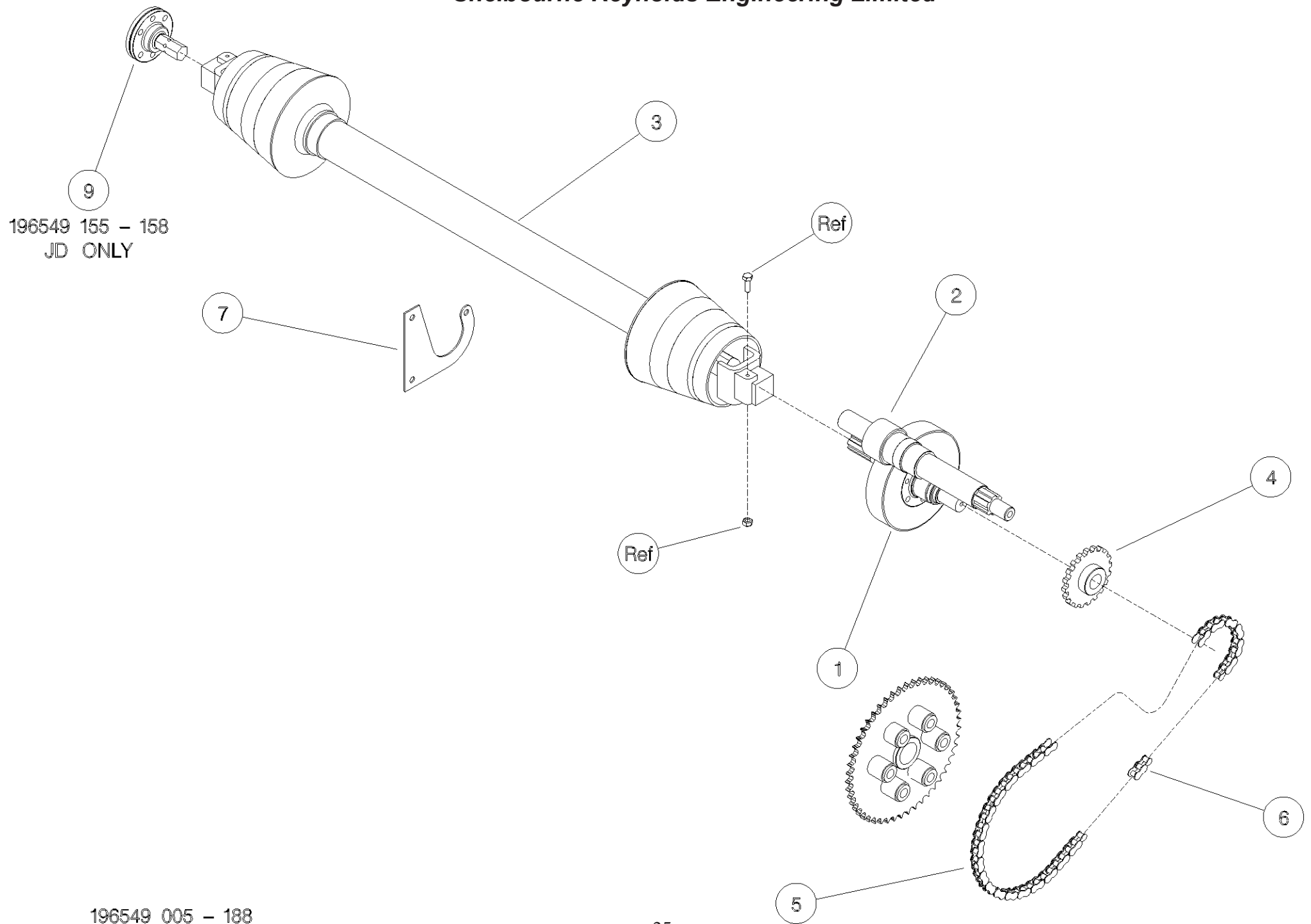
| ASSY NUMBER: 196549 016 | | | | ASSY DESCRIPTION: DRIVE KIT CLAAS (PRE LEX.)C/RVs (20') | | | |
|-------------------------|-----------|-----------------------------|-----|---|---------|-------------|-----|
| ITEM | PART NO | DESCRIPTION | QTY | ITEM | PART NO | DESCRIPTION | QTY |
| 1 | 192592 01 | HELICAL GEAR (42T) | 1 | | | | |
| | | WITH ROTOR GEARBOX | | | | | |
| OR | 192592 13 | INPUT GEAR (33t) | 1 | | | | |
| | | WITHOUT ROTOR GEARBOX | | | | | |
| 2 | 193599 01 | PINION 27T | 1 | | | | |
| | | WITH ROTOR GEARBOX | | | | | |
| OR | 193599 13 | PINION (36t) | 1 | | | | |
| | | WITHOUT ROTOR GEARBOX OR | | | | | |
| | | 65mm SHAFT | | | | | |
| 3 | PTO-26014 | PTO (W2500 SERIES | 1 | | | | |
| 3A | PTO-00080 | PTO YOKE-COMBINE (SPARES) | 1 | | | | |
| 3B | PTO-00083 | PTO CROSS BEARING (SPARES) | A/R | | | | |
| 3C | PTO-00119 | PTO CLUTCH-HEADER (SPARES) | 1 | | | | |
| 3D | PTO-00093 | PTO GUARD ASSY (SPARES) | 1 | | | | |
| REF | BLTA10380 | SHEARBOLT | A/R | | | | |
| REF | NUT-0265 | NYLOC NUT | A/R | | | | |
| 4 | 192768 08 | SPROCKET ASSY 13T | 1 | | | | |
| 5 | CHN-01920 | CHAIN 91 LINKS + JOINER | 1 | | | | |
| | | (FIXED GEARBOX MACHINES) | | | | | |
| OR | CHN-01920 | CHAIN 101 LINKS | 1 | | | | |
| | | (PIVOTING GEARBOX MACHINES) | | | | | |
| 6 | CHN-01901 | JOINING LINK | 1 | | | | |
| 7 | KIT-00931 | PTO SUPPORT KIT | 1 | | | | |



196549 155 - 158
JD ONLY

Shelbourne Reynolds Engineering Limited

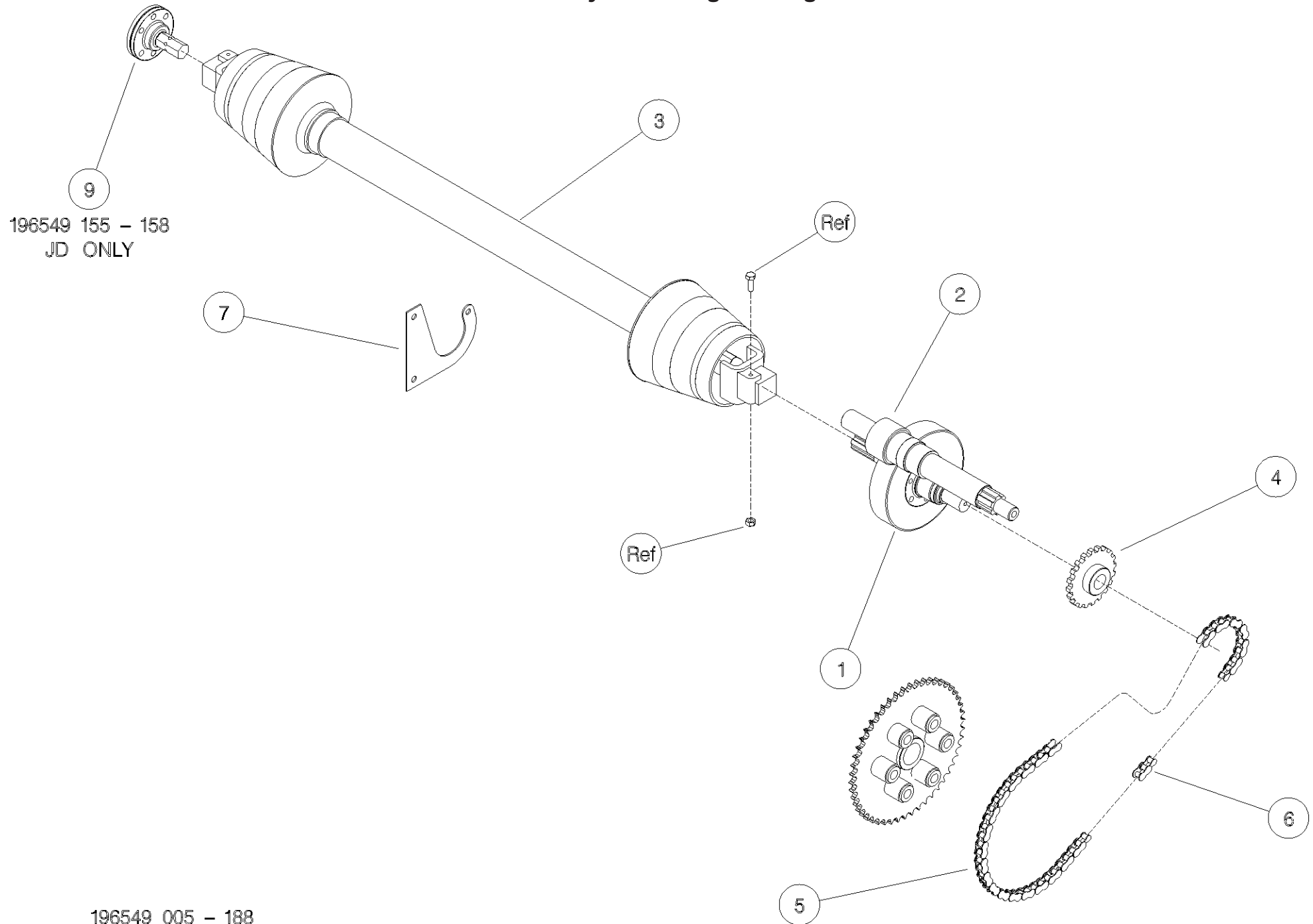
| ASSY NUMBER: 196549 018 | | | | ASSY DESCRIPTION: DRIVE KIT CLAAS (PRE LEX.) C/RVs (22-32') | | | |
|-------------------------|-----------|-----------------------------|-----|---|---------|-------------|-----|
| ITEM | PART NO | DESCRIPTION | QTY | ITEM | PART NO | DESCRIPTION | QTY |
| 1 | 192592 01 | HELICAL GEAR (42T) | 1 | | | | |
| | | WITH ROTOR GEARBOX | | | | | |
| OR | 192592 13 | INPUT GEAR (33t) | 1 | | | | |
| | | WITHOUT ROTOR GEARBOX | | | | | |
| 2 | 193599 01 | PINION 27T | 1 | | | | |
| | | WITH ROTOR GEARBOX | | | | | |
| OR | 193599 13 | PINION (36t) | 1 | | | | |
| | | WITHOUT ROTOR GEARBOX OR | | | | | |
| | | 65mm SHAFT | | | | | |
| 3 | PTO-26004 | PTO (W2500 SERIES) | 1 | | | | |
| 3A | PTO-00080 | PTO YOKE-COMBINE (SPARES) | 1 | | | | |
| 3B | PTO-00083 | PTO CROSS BEARING (SPARES) | A/R | | | | |
| 3C | PTO-00119 | PTO CLUTCH-HEADER (SPARES) | 1 | | | | |
| 3D | PTO-00093 | PTO GUARD ASSY (SPARES) | 1 | | | | |
| REF | BLTA10380 | SHEARBOLT | A/R | | | | |
| REF | NUT-0265 | NYLOC NUT | A/R | | | | |
| 4 | 192768 08 | SPROCKET ASSY 13T | 1 | | | | |
| 5 | CHN-01920 | CHAIN 91 LINKS + JOINER | 1 | | | | |
| | | (FIXED GEARBOX MACHINES) | | | | | |
| OR | CHN-01920 | CHAIN 101 LINKS | 1 | | | | |
| | | (PIVOTING GEARBOX MACHINES) | | | | | |
| 6 | CHN-01901 | JOINING LINK | 1 | | | | |
| 7 | KIT-00931 | PTO SUPPORT KIT | 1 | | | | |



Shelbourne Reynolds Engineering Limited

| ASSY NUMBER: 196549 185 | | | | ASSY DESCRIPTION: DRIVE KIT CLAAS LEX C/RVS/RSD (18' /5.4m) | | | |
|-------------------------|-------------|------------------------------|-----|---|---------|-------------|-----|
| ITEM | PART NO | DESCRIPTION | QTY | ITEM | PART NO | DESCRIPTION | QTY |
| 1A | 192592 01 | INPUT GEAR (42t) | 1 | | | | |
| | | WITH ROTOR GEARBOX | | | | | |
| 1B | 192592 09 | INPUT GEAR (37t) | 1 | | | | |
| | | WITHOUT ROTOR GEARBOX | | | | | |
| 1D/E | 192592 13 | INPUT GEAR (33t) | 1 | | | | |
| | | WITHOUT ROTOR GEARBOX | | | | | |
| 2A | 193599 01 | PINION (27t) | 1 | | | | |
| | | WITH ROTOR GEARBOX | | | | | |
| 2B | 193599 09 | PINION (32t) | 1 | | | | |
| | | WITHOUT ROTOR GEARBOX | | | | | |
| 2D | 193599 13 | PINION (36t) | 1 | | | | |
| | | WITHOUT ROTOR GEARBOX | | | | | |
| 2E | 198999 13 | PINION (36t) | 1 | | | | |
| | | GEARBOX WITH 65mm SHAFT | | | | | |
| 3 | PTO-26007WE | PTO (COLLAR) | 1 | | | | |
| OR | PTO-26009WE | PTO (PUSH PIN) | | | | | |
| 3a | PTO-00082WE | PTO YOKE-COMBINE (COLLAR) | | | | | |
| OR | PTO-00082 | PTO YOKE-COMBINE (PUSH PIN) | | | | | |
| 3b | PTO-00083 | PTO CROSS BEARING | | | | | |
| 3c | PTO-00119 | PTO SHEAR BOLT CLUTCH-HEADER | | | | | |
| 3d | PTO-00093WE | PTO GUARD ASSY (BLACK) | | | | | |
| OR | PTO-00093 | PTO GUARD ASSY (YELLOW) | | | | | |
| 3e | PTO-00968 | EASY LOCK GUARD CLIPS (RED) | | | | | |
| 3g | BLTA10384 | SHEARBOLT | | | | | |
| 3h | NUT-0265 | NYLOC NUT | | | | | |
| 4 | 192768 08 | SPROCKET | 1 | | | | |
| 5 | CHN-01991 | CHAIN (99 LINKS PLUS JOINER) | 1 | | | | |
| 5a | CHN-01901 | JOINING LINK | | | | | |
| 6 | CHN-01910 | HALF LINK | A/R | | | | |
| 7 | KIT-00931 | PTO SUPPORT KIT | 1 | | | | |

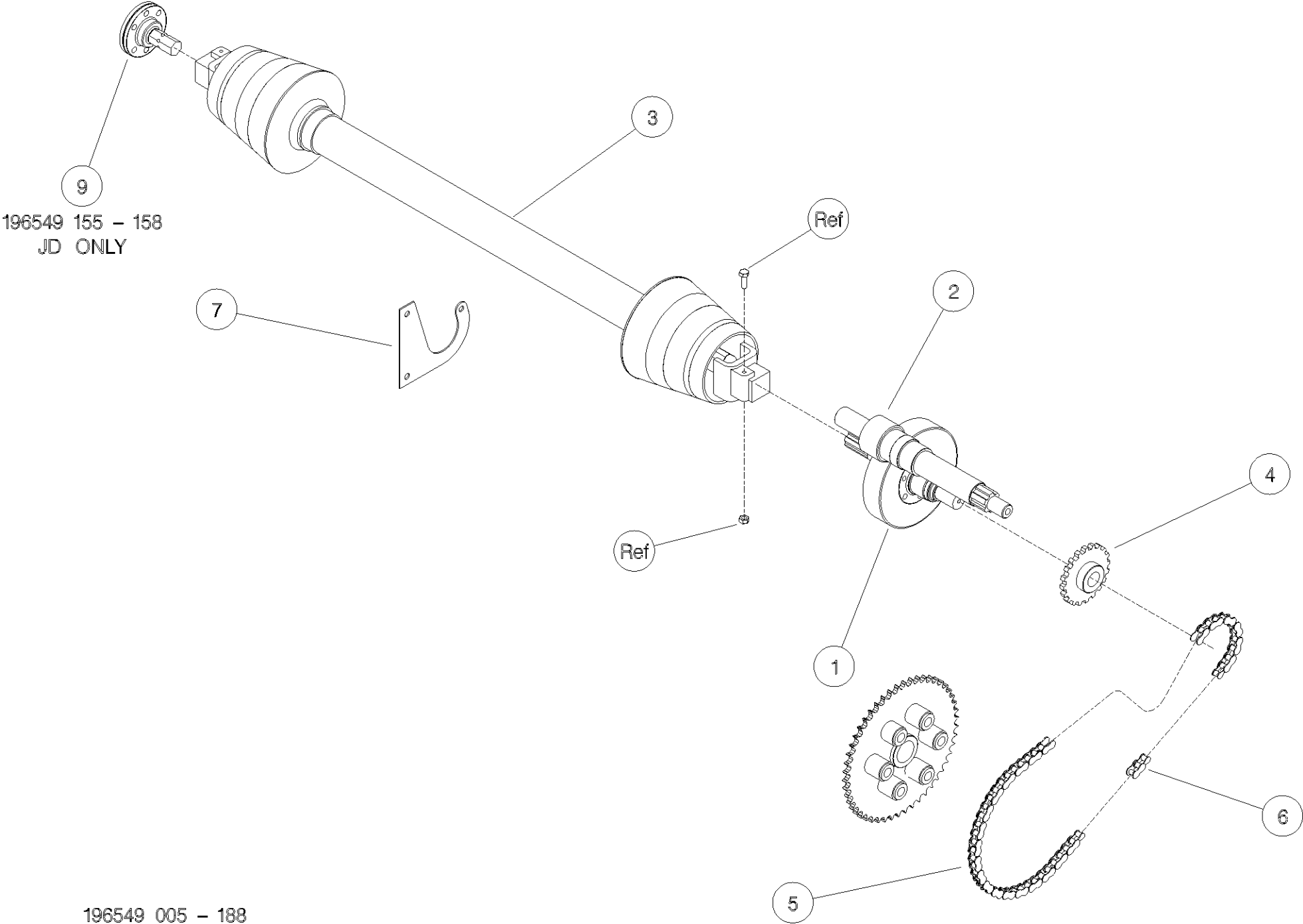
Shelbourne Reynolds Engineering Limited



196549 005 - 188

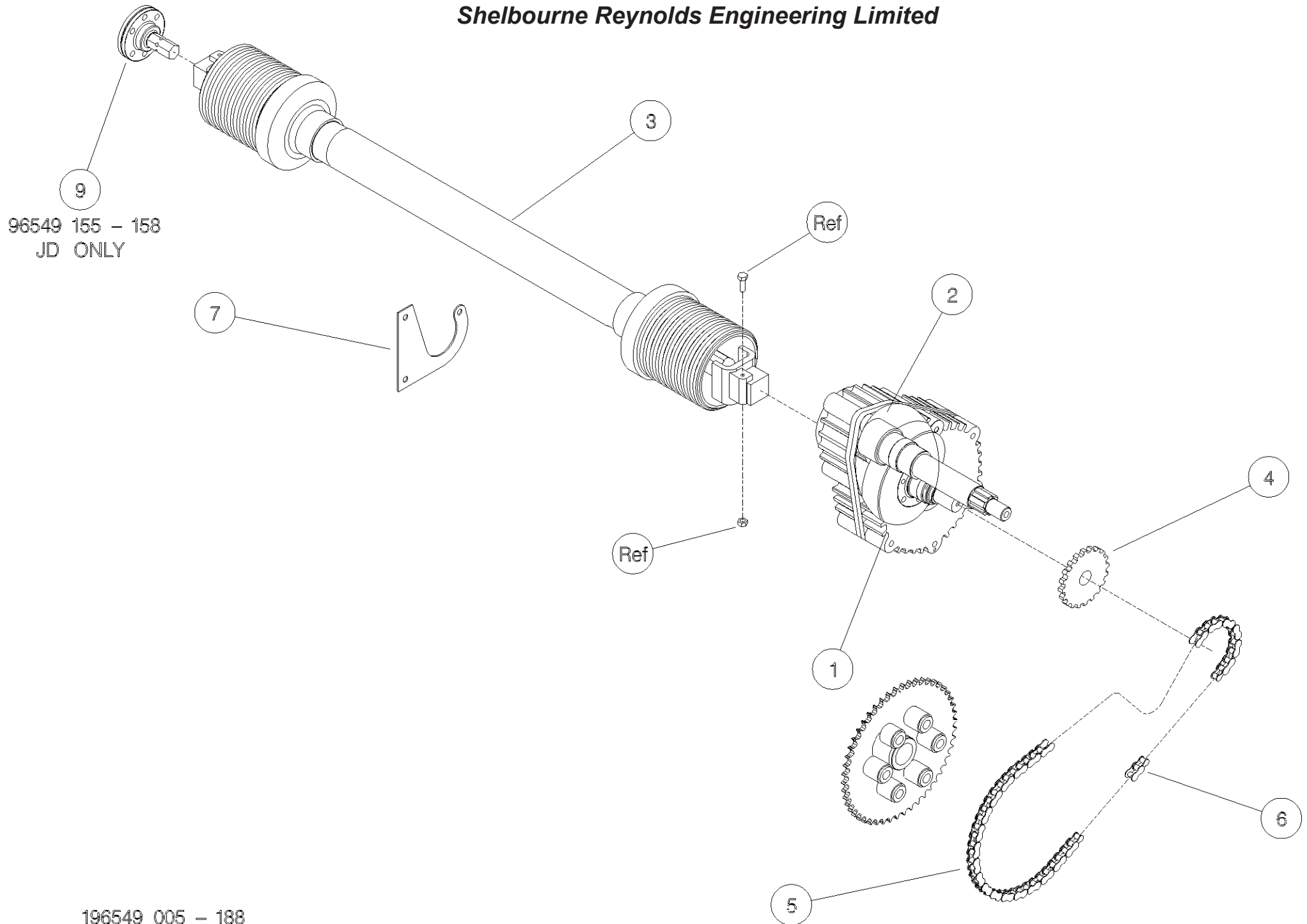
Shelbourne Reynolds Engineering Limited

| ASSY NUMBER: 196549 186 | | | | ASSY DESCRIPTION: DRIVE KIT CLAAS LEX C/RVS/RSD (20' / 6.0m) | | | |
|-------------------------|-------------|------------------------------|-----|--|---------|-------------|-----|
| ITEM | PART NO | DESCRIPTION | QTY | ITEM | PART NO | DESCRIPTION | QTY |
| 1A | 192592 01 | INPUT GEAR (42t) | 1 | | | | |
| | | WITH ROTOR GEARBOX | | | | | |
| 1B | 192592 09 | INPUT GEAR (37t) | 1 | | | | |
| | | WITHOUT ROTOR GEARBOX | | | | | |
| 1D/E | 192592 13 | INPUT GEAR (33t) | 1 | | | | |
| | | WITHOUT ROTOR GEARBOX | | | | | |
| 2A | 193599 01 | PINION (27t) | 1 | | | | |
| | | WITH ROTOR GEARBOX | | | | | |
| 2B | 193599 09 | PINION (32t) | 1 | | | | |
| | | WITHOUT ROTOR GEARBOX | | | | | |
| 2D | 193599 13 | PINION (36t) | 1 | | | | |
| | | WITHOUT ROTOR GEARBOX | | | | | |
| 2E | 198999 13 | PINION (36t) | 1 | | | | |
| | | GEARBOX WITH 65mm SHAFT | | | | | |
| 3 | PTO-26008WE | PTO (COLLAR YOKE) | 1 | | | | |
| OR | PTO-26010WE | PTO (PUSH PIN) | | | | | |
| 3a | PTO-00082WE | PTO YOKE-COMBINE (COLLAR) | | | | | |
| OR | PTO-00082 | PTO YOKE-COMBINE (PUSH PIN) | | | | | |
| 3b | PTO-00083 | PTO CROSS BEARING | | | | | |
| 3c | PTO-00119 | PTO SHEAR BOLT CLUTCH-HEADER | | | | | |
| 3d | PTO-00093WE | PTO GUARD ASSY (BLACK) | | | | | |
| OR | PTO-00093 | PTO GUARD ASSY (YELLOW) | | | | | |
| 3e | PTO-00968 | EASY LOCK GUARD CLIPS (RED) | | | | | |
| 3g | BLTA10384 | SHEARBOLT | | | | | |
| 3h | NUT-0265 | NYLOC NUT | | | | | |
| 4 | 192768 08 | SPROCKET | 1 | | | | |
| 5 | CHN-01991 | CHAIN (99 LINKS PLUS JOINER) | 1 | | | | |
| 5a | CHN-01901 | JOINING LINK | | | | | |
| 6 | CHN-01910 | HALF LINK | A/R | | | | |
| 7 | KIT-00931 | PTO SUPPORT KIT | 1 | | | | |



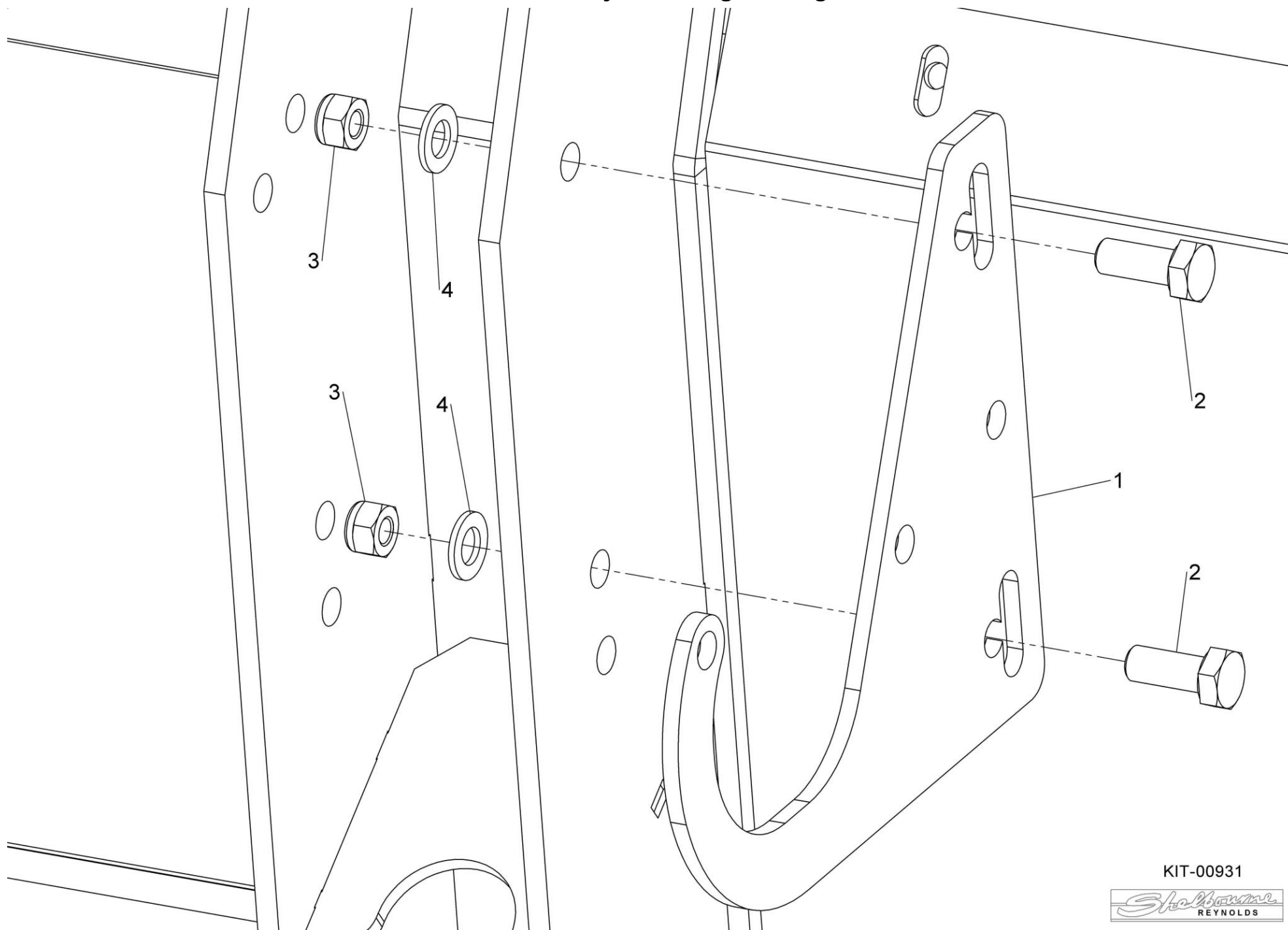
Shelbourne Reynolds Engineering Limited

| ASSY NUMBER: 196549 188 | | | | ASSY DESCRIPTION: DRIVE KIT CLAAS LEX C/RVS/RSD/Excel (22-42) | | | |
|-------------------------|-------------|---|-----|---|---------|-------------|-----|
| ITEM | PART NO | DESCRIPTION | QTY | ITEM | PART NO | DESCRIPTION | QTY |
| 1A | 192592 01 | INPUT GEAR (42t) WITH ROTOR GEARBOX | 1 | | | | |
| 1B | 192592 09 | INPUT GEAR (37t) WITHOUT ROTOR GEARBOX | 1 | | | | |
| 1D/E | 192592 13 | INPUT GEAR (33t) WITHOUT ROTOR GEARBOX | 1 | | | | |
| 2A | 193599 01 | PINION (27t) WITH ROTOR GEARBOX | 1 | | | | |
| 2B | 193599 09 | PINION (32t) WITHOUT ROTOR GEARBOX | 1 | | | | |
| 2D | 193599 13 | PINION (36t) WITHOUT ROTOR GEARBOX | 1 | | | | |
| 2E | 198999 13 | PINION (36t) GEARBOX WITH 65mm SHAFT | 1 | | | | |
| 3 | PTO-26003WE | PTO (COLLAR YOKE) | 1 | | | | |
| OR | PTO-26001WE | PTO (PUSH PIN) | | | | | |
| 3a | PTO-00082WE | PTO YOKE-COMBINE (COLLAR) | | | | | |
| OR | PTO-00082 | PTO YOKE-COMBINE (PUSH PIN) | | | | | |
| 3b | PTO-00083 | PTO CROSS BEARING | | | | | |
| 3c | PTO-00119 | PTO SHEAR BOLT CLUTCH-HEADER | | | | | |
| 3d | PTO-00093WE | PTO GUARD ASSY (BLACK) | | | | | |
| OR | PTO-00093 | PTO GUARD ASSY (YELLOW) | | | | | |
| 3e | PTO-00968 | EASY LOCK GUARD CLIPS (RED) | | | | | |
| 3g | BLTA10384 | SHEARBOLT | | | | | |
| 3h | NUT-0265 | NYLOC NUT | | | | | |
| 4 | 192768 08 | SPROCKET | 1 | | | | |
| 5 | CHN-01991 | CHAIN (99 LINKS PLUS JOINER) | 1 | | | | |
| 5a | CHN-01901 | JOINING LINK | | | | | |
| 6 | CHN-01910 | HALF LINK | A/R | | | | |
| 7 | KIT-00931 | PTO SUPPORT KIT | 1 | | | | |



Shelbourne Reynolds Engineering Limited

| | | | | | | | |
|------------------------|-----------|--------------|-----|-----------------------------------|---------|-------------|-----|
| ASSY NUMBER: KIT-00931 | | | | ASSY DESCRIPTION: PTO SUPPORT KIT | | | |
| ITEM | PART NO | DESCRIPTION | QTY | ITEM | PART NO | DESCRIPTION | QTY |
| 1 | 191945 01 | PTO SUPPORT | 1 | | | | |
| 2 | HSS-0238 | SETSCREW | 2 | | | | |
| 3 | NUT-0269 | NYLOC NUT | 2 | | | | |
| 4 | WSH-0018 | PLAIN WASHER | 2 | | | | |

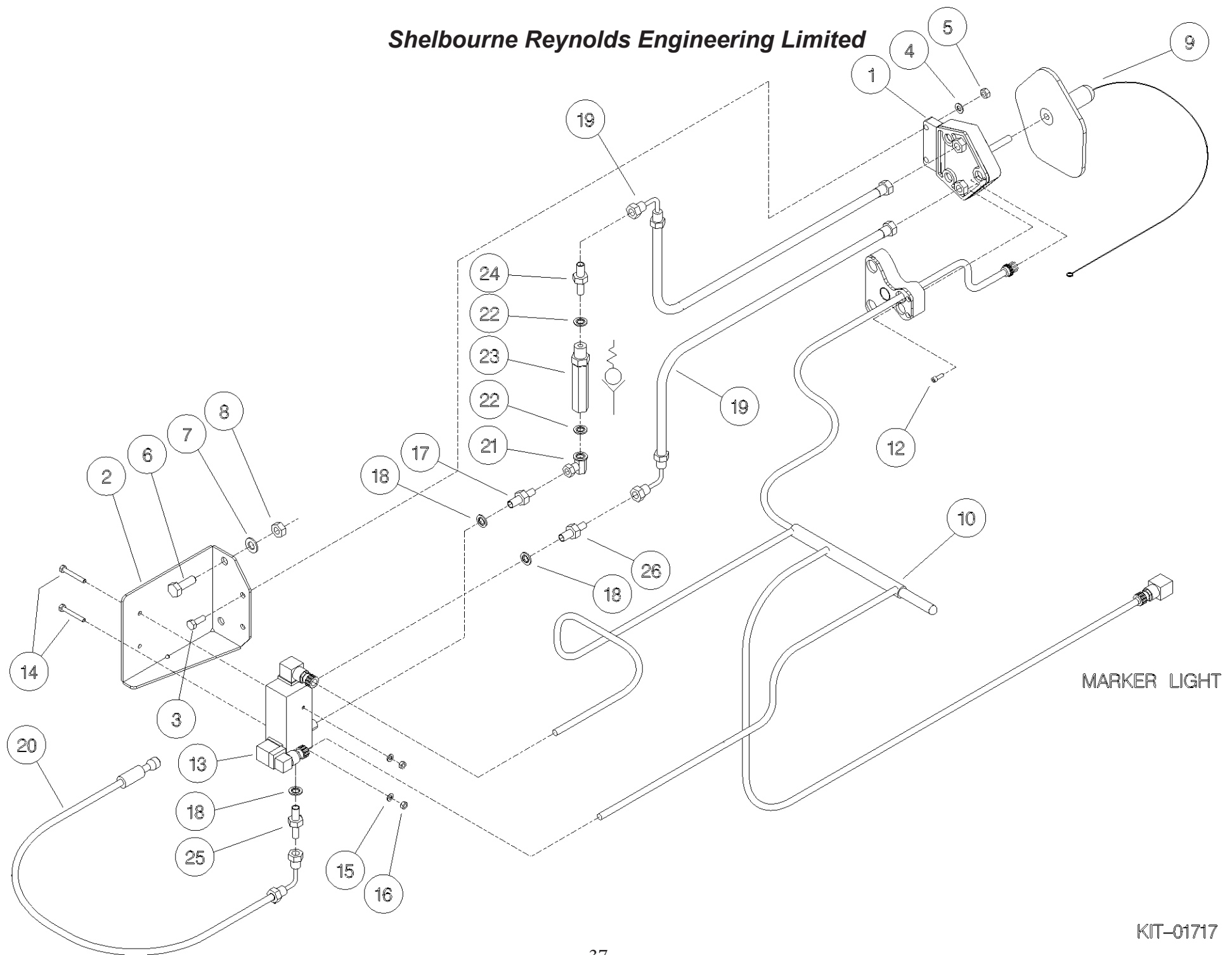


KIT-00931

HYDRAULIC KITS

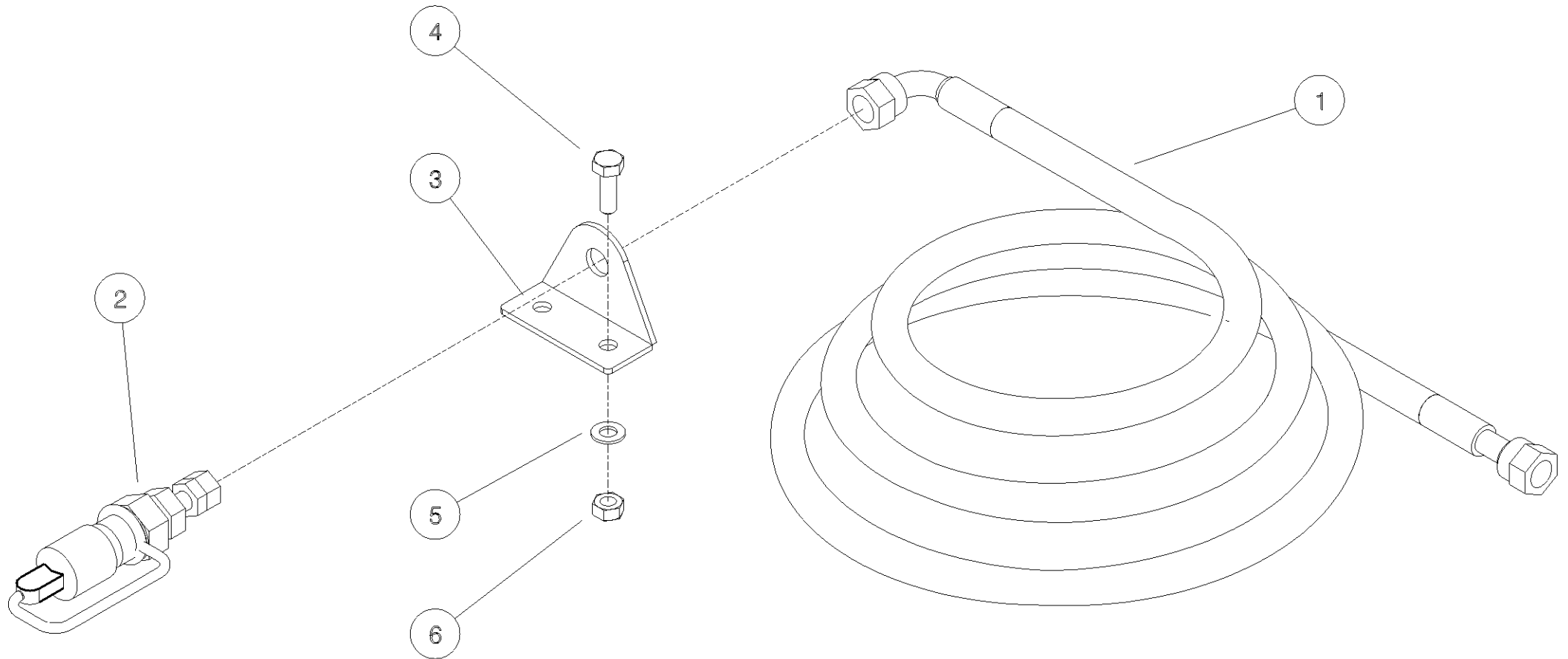
Shelbourne Reynolds Engineering Limited

| ASSY NUMBER: KIT-01717 | | | | ASSY DESCRIPTION: CLAAS LEXION 400 HYD KIT | | | |
|------------------------|-----------|-----------------------------|-----|--|---------|-------------|-----|
| ITEM | PART NO | DESCRIPTION | QTY | ITEM | PART NO | DESCRIPTION | QTY |
| 1 | CHP-05000 | COUPLING | 1 | | | | |
| 2 | 193601 01 | FIXING PLATE | 1 | | | | |
| 3 | HSS-0150 | SET SCREW | 2 | | | | |
| 4 | WSH-0012 | WASHER | 2 | | | | |
| 5 | NUT-0263 | NUT | 2 | | | | |
| 6 | HSS-0238 | SETSCREW | 2 | | | | |
| 7 | WSH-0018 | WASHER | 2 | | | | |
| 8 | NUT-0269 | NUT | 2 | | | | |
| 9 | CHP-05005 | GUARD CAP | 1 | | | | |
| 10 | 195076 01 | WIRE LOOM ASSY (2001 & ON) | 1 | | | | |
| OR | CHP-05010 | WIRE LOOM (UP TO 2001) | | | | | |
| 11 | | | | | | | |
| 12 | SCCA05323 | CAP HEAD SCREW(2001&ON) | 5 | | | | |
| OR | SCW-0064 | CAP HEAD SCREW (UP TO 2001) | | | | | |
| 13 | HVB-12506 | VALVE BLOCK (2018 & ON) | | | | | |
| OR | HVB-12504 | VALVE BLOCK (2002-2017) | 1 | | | | |
| OR | HVB-12501 | VALVE BLOCK (UP TO 2002) | | | | | |
| 14 | BLTA06350 | HEX.HEAD BOLT | 2 | | | | |
| 15 | WSH-0009 | WASHER | 2 | | | | |
| 16 | NUT-0260 | NUT | 2 | | | | |
| 17 | FIT-0025 | ADAPTOR | 2 | | | | |
| | | (2002 & ON, REF ITEM 13) | 2 | | | | |
| | | (UP TO 2002, REF ITEM 13) | 1 | | | | |
| 18 | WSH-1010 | DOWTY WASHER | 3 | | | | |
| 19 | HHBC05010 | HYDRAULIC HOSE ASSY | 2 | | | | |
| 20 | HHBC08510 | HYDRAULIC HOSE ASSY | 1 | | | | |
| 21 | HALAA0303 | FITTING | 1 | | | | |
| | | (UP TO 2002, REF ITEM 13) | | | | | |
| 22 | WSH-1005 | DOWTY WASHER | 2 | | | | |
| | | (UP TO 2002, REF ITEM 13) | | | | | |
| 23 | HVB-20560 | CHECK VALVE | 1 | | | | |
| | | (UP TO 2002, REF ITEM 13) | | | | | |
| 24 | HMA-0052 | FITTING | 1 | | | | |
| | | (UP TO 2002, REF ITEM 13) | | | | | |
| 25 | HAQAA0305 | STRAINER FITTING | 1 | | | | |
| | | (UP TO 2002, REF ITEM 13)□ | | | | | |
| 26 | HAPAA0305 | RESTRICTOR FITTING | 1 | | | | |



Shelbourne Reynolds Engineering Limited

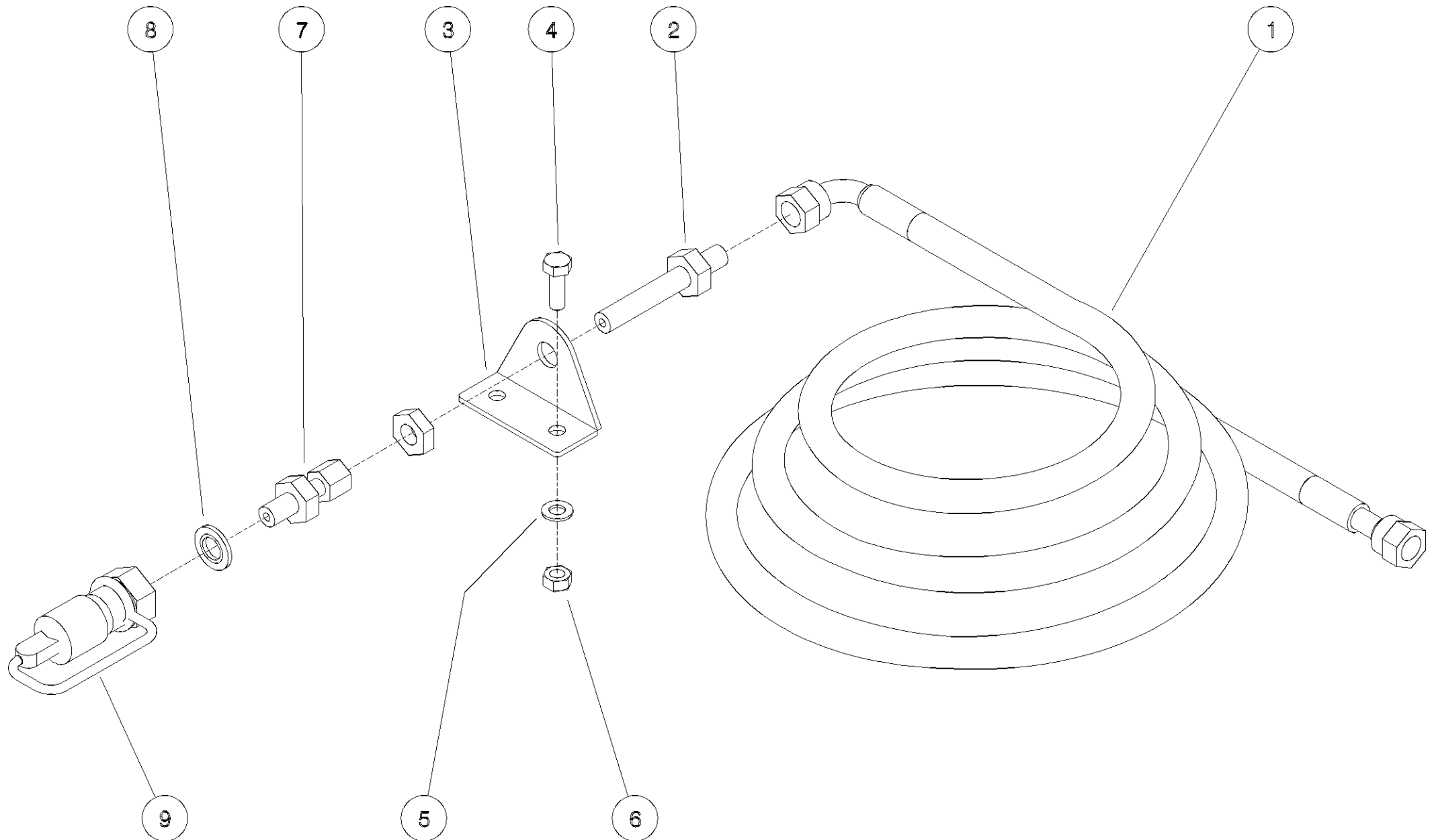
| | | | | | | | |
|------------------------|-----------|----------------|-----|---|---------|-------------|-----|
| ASSY NUMBER: KIT-01721 | | | | ASSY DESCRIPTION: HYDRAULIC KIT CLAAS (RH POSN.SCREW) | | | |
| ITEM | PART NO | DESCRIPTION | QTY | ITEM | PART NO | DESCRIPTION | QTY |
| 1 | HHBC27020 | HYD HOSE ASSY | 1 | | | | |
| 2 | COU-0123 | SCREW COUPLING | 1 | | | | |
| 3 | 195343 01 | FIXING BRACKET | 1 | | | | |
| 4 | HSS-0140 | SETS SCREW | 2 | | | | |
| 5 | WSH-0012 | PLAIN WASHER | 2 | | | | |
| 6 | NUT-0263 | NYLOC NUT | 2 | | | | |



Shelbourne Reynolds Engineering Limited

| | | | | | | | |
|------------------------|-----------|---------------------|-----|---|---------|-------------|-----|
| ASSY NUMBER: KIT-01722 | | | | ASSY DESCRIPTION: HYDRAULIC KIT CLAAS (RH POSN. 3/8" M) | | | |
| ITEM | PART NO | DESCRIPTION | QTY | ITEM | PART NO | DESCRIPTION | QTY |
| 1 | HHBC27010 | HYD HOSE ASSY | 1 | | | | |
| 2 | HBK-0010 | BULKHEAD FITTING | 1 | | | | |
| 3 | 195343 01 | FIXING BRACKET | 1 | | | | |
| 4 | HSS-0140 | SETS SCREW | 2 | | | | |
| 5 | WSH-0012 | PLAIN WASHER | 2 | | | | |
| 6 | NUT-0263 | NYLOC NUT | 2 | | | | |
| 7 | HACAA0503 | FITTING | 1 | | | | |
| 8 | WSH-1010 | DOWTY WASHER | 1 | | | | |
| 9 | COU-0161 | PULL BRAKE COUPLING | 1 | | | | |

Shelbourne Reynolds Engineering Limited

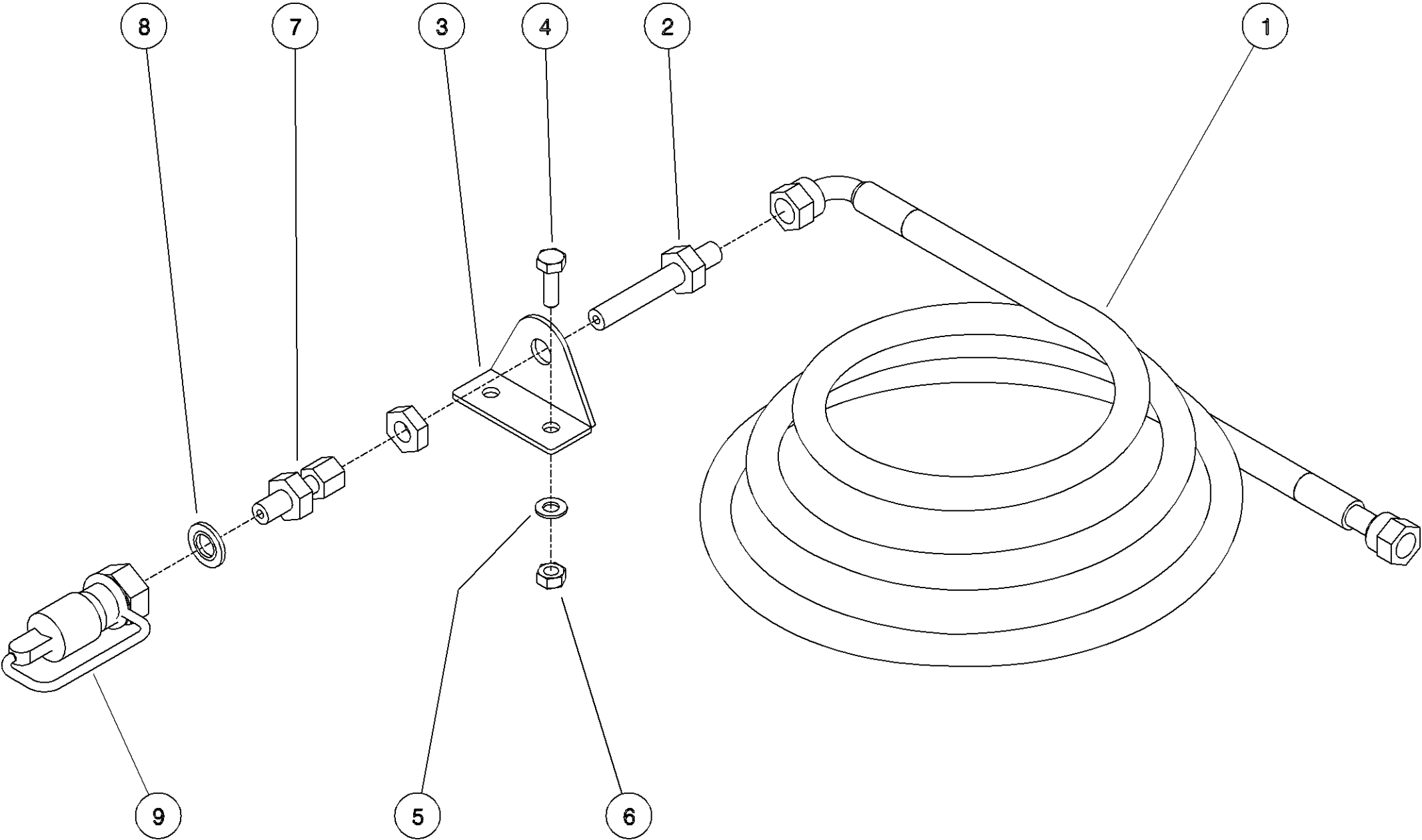


KIT - 01722 & KIT - 01723

Shelbourne Reynolds Engineering Limited

| ASSY NUMBER: KIT-01723 | | | | ASSY DESCRIPTION: HYDRAULIC KIT CLAAS (RH POSN.1/2" M) | | | |
|------------------------|-----------|---------------------|-----|--|---------|-------------|-----|
| ITEM | PART NO | DESCRIPTION | QTY | ITEM | PART NO | DESCRIPTION | QTY |
| 1 | HHBC27010 | HYD HOSE ASSY | 1 | | | | |
| 2 | HBK-0010 | BULKHEAD FITTING | 1 | | | | |
| 3 | 195343 01 | FIXING BRACKET | 1 | | | | |
| 4 | HSS-0140 | SETS SCREW | 2 | | | | |
| 5 | WSH-0012 | PLAIN WASHER | 2 | | | | |
| 6 | NUT-0263 | NYLOC NUT | 2 | | | | |
| 7 | HACAA0703 | FITTING | 1 | | | | |
| 8 | WSH-1015 | DOWTY WASHER | 1 | | | | |
| 9 | COU-0162 | PULL BRAKE COUPLING | 1 | | | | |

Shelbourne Reynolds Engineering Limited

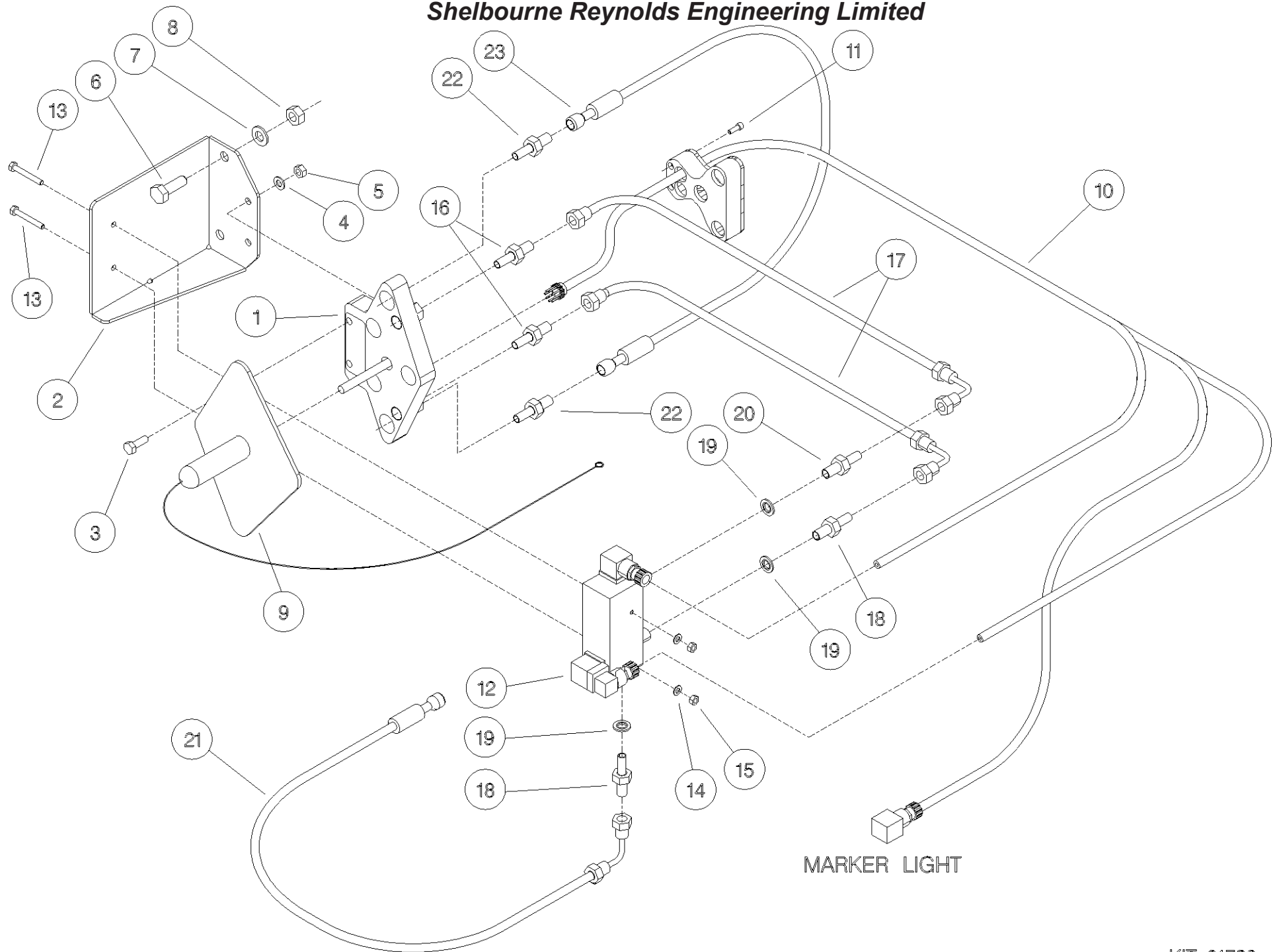


KIT – 01722 & KIT – 01723

Shelbourne Reynolds Engineering Limited

| ASSY NUMBER: KIT-01728 | | | | ASSY DESCRIPTION: CLAAS LEXION HYD MULTICOUPLER KIT | | | |
|------------------------|-----------|-----------------------------|-----|---|---------|-------------|-----|
| ITEM | PART NO | DESCRIPTION | QTY | ITEM | PART NO | DESCRIPTION | QTY |
| 1 | CHP-05040 | COUPLING | 1 | | | | |
| 2 | 193601 01 | FIXING PLATE | 1 | | | | |
| 3 | HSS-0150 | SET SCREW | 2 | | | | |
| 4 | WSH-0012 | WASHER | 2 | | | | |
| 5 | NUT-0263 | NYLOC NUT | 2 | | | | |
| 6 | HSS-0238 | SETSCREW | 2 | | | | |
| 7 | WSH-0018 | PLAIN WASHER | 2 | | | | |
| 8 | NUT-0269 | NYLOC NUT | 2 | | | | |
| 9 | CHP-05045 | COUPLING COVER | 1 | | | | |
| 10 | 195076 01 | WIRE LOOM ASSY | 1 | | | | |
| 11 | SCCA05323 | CAP SOCKET HEAD SCREW | 5 | | | | |
| 12 | HVB-12506 | DUAL SOLENOID CONTROL VALVE | 1 | | | | |
| | | (MID 2018 & ON) | | | | | |
| OR | HVB-12504 | DUAL SOLENOID CONTROL VALVE | 1 | | | | |
| | | (UPTO MID 2018) | | | | | |
| 13 | BLTA06350 | HEX.HEAD BOLT | 2 | | | | |
| 14 | WSH-0009 | PLAIN WASHER | 2 | | | | |
| 15 | NUT-0260 | NYLOC NUT | 2 | | | | |
| 16 | FIT-0552 | MALE STUD COUPLING | 2 | | | | |
| 17 | HHBC05010 | HYDRAULIC HOSE ASSY | 2 | | | | |
| 18 | FIT-0025 | FITTING | 2 | | | | |
| 19 | WSH-1010 | DOWTY WASHER | 3 | | | | |
| 20 | HAPAA0305 | RESTRICTOR FIT. | 1 | | | | |
| 21 | HHBC08510 | HYDRAULIC HOSE ASSY | 1 | | | | |
| 22 | HMA-0110 | FITTING | 2 | | | | |
| 23 | HHEF03505 | HYDRAULIC HOSE ASSY | 1 | | | | |

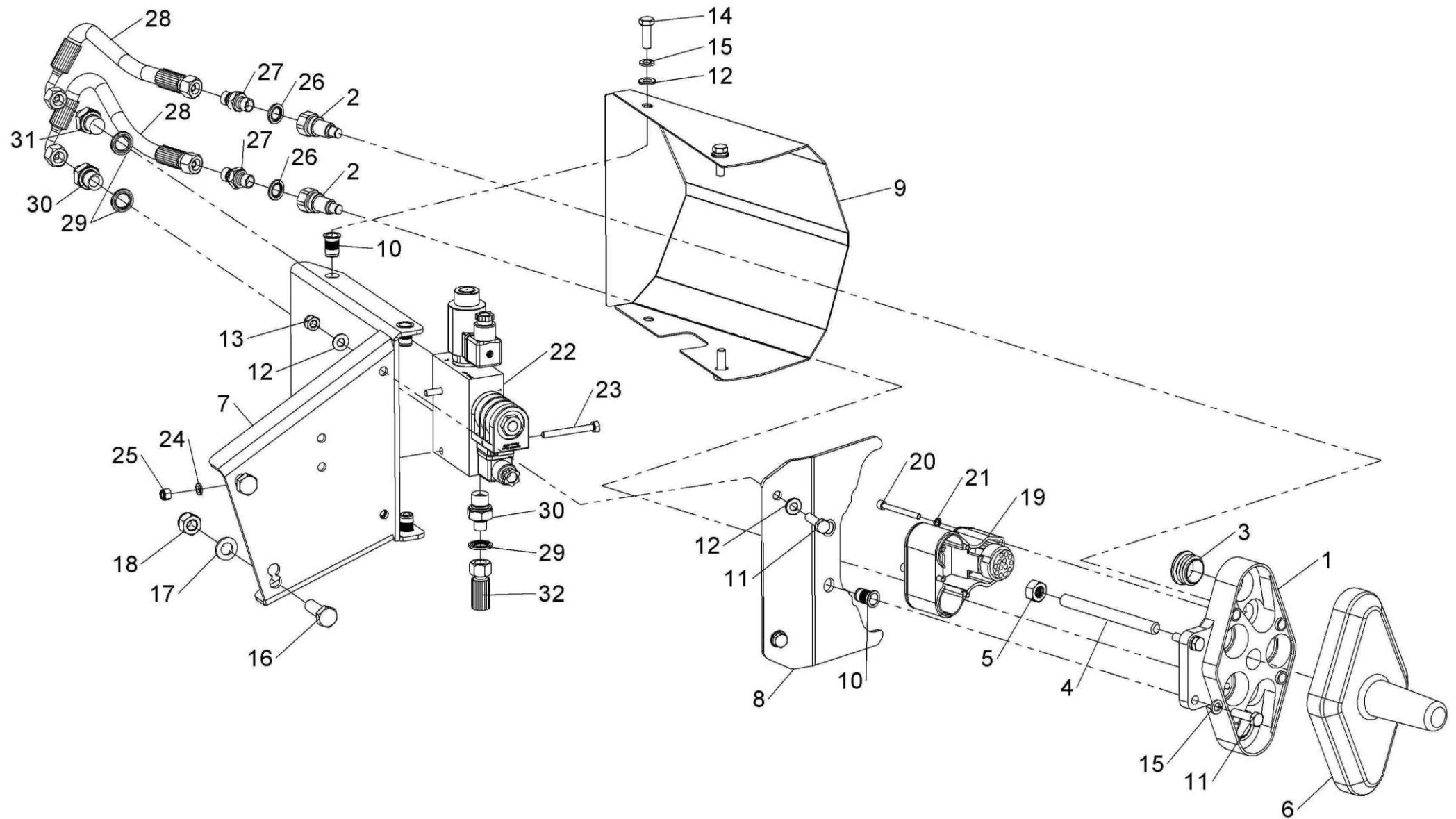
Shelbourne Reynolds Engineering Limited



Shelbourne Reynolds Engineering Limited

| ASSY NUMBER: KIT-01732 | | | | ASSY DESCRIPTION: CLAAS LEXION HYD MULTICOUPLER KIT | | | |
|------------------------|-----------|-----------------------------|-----|---|---------|-------------|-----|
| ITEM | PART NO | DESCRIPTION | QTY | ITEM | PART NO | DESCRIPTION | QTY |
| 1 | CHP-05041 | MULTICOUPLER HOUSING | 1 | | | | |
| 2 | CHP-05042 | MALE HYD COUPLING | 2 | | | | |
| 3 | PTF-00134 | PLASTIC CAP INSERT | 2 | | | | |
| 4 | 290835 01 | THREADED ROD | 1 | | | | |
| 5 | NUT-0170 | PLAIN NUT | 1 | | | | |
| 6 | CHP-05045 | COUPLING COVER | 1 | | | | |
| 7 | 290883 01 | VALVE PLATE | 1 | | | | |
| 8 | 290884 01 | COUPLER PLATE | 1 | | | | |
| 9 | 290885 01 | COVER | 1 | | | | |
| 10 | NUTA13087 | NUTSERT | 6 | | | | |
| 11 | HSS-0150 | SET SCREW | 4 | | | | |
| 12 | WSH-0012 | WASHER | 8 | | | | |
| 13 | NUT-0263 | NYLOC NUT | 2 | | | | |
| 14 | HSS-0145 | SET SCREW | 4 | | | | |
| 15 | WSH-0058 | SPRING WASHER | 6 | | | | |
| 16 | HSS-0241 | SETSCREW | 2 | | | | |
| 17 | WSH-0018 | PLAIN WASHER | 2 | | | | |
| 18 | NUT-0269 | NYLOC NUT | 2 | | | | |
| 19 | 195076 01 | WIRE LOOM ASSY | 1 | | | | |
| 20 | SCCA05323 | CAP SOCKET HEAD SCREW | 5 | | | | |
| 21 | WSH-0054 | SPRING WASHER | 5 | | | | |
| 22 | HVB-12506 | DUAL SOLENOID CONTROL VALVE | 1 | | | | |
| 23 | BLTA06350 | HEX.HEAD BOLT | 2 | | | | |
| 24 | WSH-0009 | PLAIN WASHER | 2 | | | | |
| 25 | NUT-0260 | NYLOC NUT | 2 | | | | |
| 26 | WSH-1005 | DOWTY WASHER | 2 | | | | |
| 27 | HMA-0052 | FITTING | 2 | | | | |
| 28 | HHBC02505 | HYDRAULIC HOSE ASSY | 2 | | | | |
| 29 | WSH-1010 | DOWTY WASHER | 3 | | | | |
| 30 | FIT-0025 | FITTING | 2 | | | | |
| 31 | HAPAA0305 | RESTRICTOR. | 1 | | | | |
| 32 | HHAC07910 | HYDRAULIC HOSE ASSY | 1 | | | | |

Shelbourne Reynolds Engineering Limited



KIT-01732

