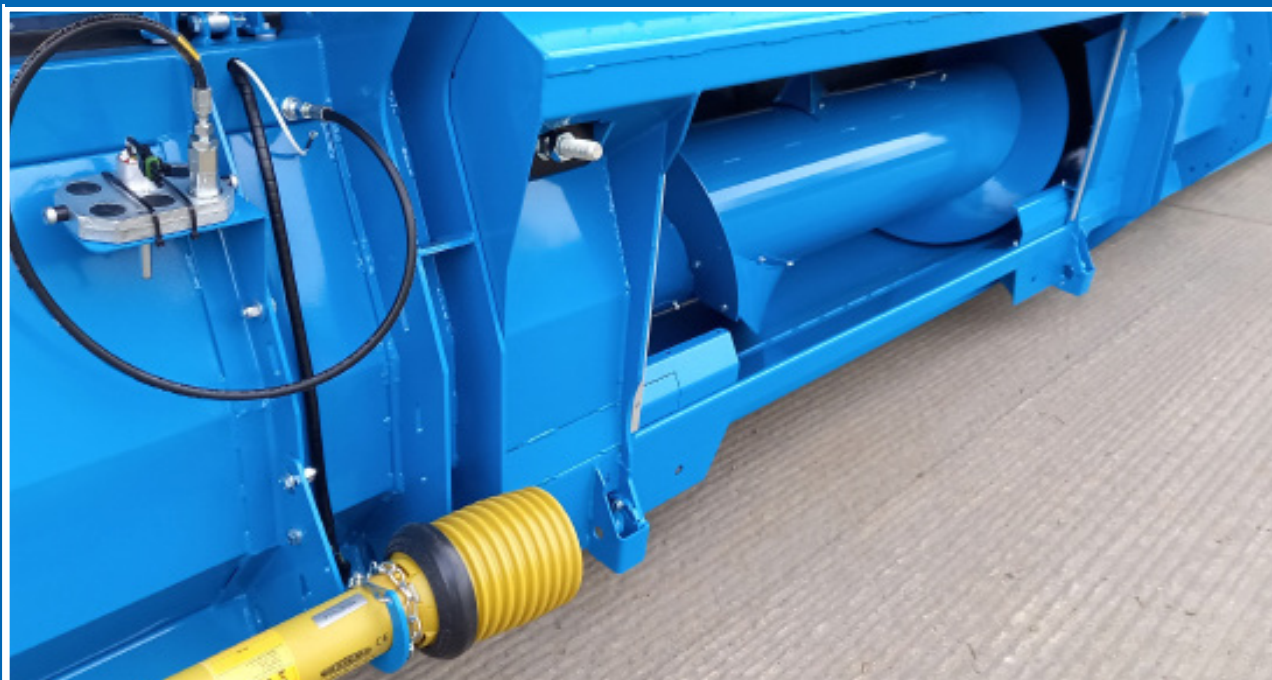


JOHN DEERE

DRIVE AND ADAPTOR PLATE PARTS MANUAL



STRIPPER HEADER

Shelbourne Reynolds Engineering Ltd
Stanton
Bury St Edmunds
Suffolk
IP31 2AR
England

Telephone: 01359 250415

Fax: 01359 250464

Stores Direct : 01359 251231

Stores Direct: 01359 252031

Shelbourne Reynolds Inc.
Colby PO box 607
1250 S Country Club Drive
Colby , Kansas 67701
U.S.A.

Telephone: (785) 462 6299

Fax: (785) 462 6761

Issue 16

06/10/2 023

ORDERING SPARE PARTS

IMPORTANT

Your Stripper Header is made up of a Machine assembly number (common parts), specific sub assemblies and also customer optional build kits. The machine, sub assemblies and optional kit numbers are listed in the front pages of your Operators manual. If you do not have these numbers please contact Shelbourne Reynolds Parts Department direct on (telephone) Stanton - (01359) 251231 or Colby - (785) 462 6299.

To ensure that you order the correct part from your SRE dealer please use the following procedure.

ALWAYS QUOTE THE MACHINE AND SERIAL NUMBERS WHEN ORDERING.

The year and/or serial number of the machine may determine the correct sub assembly.

Refer to the Parts Manuals front page/s, listing the machine assemblies. Select the correct machine assembly number which is printed in the top left corner of the page (starting with 1965_ _ 01), This machine number can also be taken from the Stripper Header identification plate located on the rear left hand corner of the machine.

On this page you will find the parts listing for the common parts for every configuration of that machine assembly number. You will find the corresponding drawing by either looking at the facing page or progressing through the manual to the next drawing. The drawings indicate the components by item numbers, which you will find, are repeated in the left-hand side of your parts listing, and therefore referring to the correct part.

Note all parts will not be found listed below the machine number. Other parts will be from specific sub assemblies and optional kits. These sub assemblies and kits will be found in numerical order further through the manual. Sub assemblies start with 1960_ _ 01 and kits start with KIT- 19 _ _ _.

The parts listing for adaptor plates, drive kits and hydraulic couplings can be found in the following manuals;

Drive & Adaptor Plate Manuals

| | |
|--------------------|-----------|
| Massey Ferguson | MAN-03172 |
| Claas/Cat | MAN-03173 |
| John Deere | MAN-03174 |
| New Holland | MAN-03175 |
| Laverda | MAN-03176 |
| Gleaner/Challenger | MAN-03177 |
| Case IH | MAN-03178 |

List Of Kit Numbers

Adaptor Plate 5

| | | |
|-----------|---|----|
| 196555 03 | Adaptor Plate Assembly John Deere (USA) | 6 |
| 196555 04 | Adaptor Plate Assembly John Deere (ERPN) | 7 |
| 196555 05 | Adaptor Plate John Deere Z Series | 8 |
| 196555 29 | JD X9 RSD Adaptor Plate Sub | 9 |
| KIT-00632 | Adaptor Plate Sub Assembly John Deere | 10 |
| KIT-00804 | Levelling Spacers | 14 |
| KIT-00805 | Bottom Pick Up Fixing Kit John Deere (ERPN) | 16 |

Drive Options 19

| | | |
|-------------|--|----|
| 196549 005 | Drive Kit Case IH C/RVs (18ft) | 20 |
| 196549 005B | Drive Kit Case IH C/RVs (18ft), Without Rotor Gearbox | 20 |
| 196549 006 | Drive Kit Case IH And John Deere C/RVS (20ft) | 22 |
| 196549 006B | Drive Kit Case IH And John Deere C/RVS (20ft), Without Rotor Gearbox | 22 |
| 196549 008 | Drive Kit Case IH And John Deere C/RVS (22-32ft) | 24 |
| 196549 008B | Drive Kit Case IH And John Deere C/RVS (22-32ft), Without Rotor Gearbox | 24 |
| 196549 155 | Drive Kit John Deere 9600, 8820 C/RVS/RSD (18ft) | 26 |
| 196549 155B | Drive Kit John Deere 9600, 8820 C/RVS/RSD (18ft) (2004 Onwards) | 26 |
| 196549 156 | Drive Kit John Deere 9600 And 8820 C/RVS/RSD (20ft) | 28 |
| 196549 156 | Drive Kit John Deere 9600 And 8820 C/RVS/RSD (20ft) (2004 Onwards) | 28 |
| 196549 158 | Drive Kit John Deere 9600 And 8820 C/RVS/RSD (22-32ft) | 30 |
| 196549 158 | Drive Kit John Deere 9600 And 8820 C/RVS/RSD (22-32ft) (2004 Onwards) | 30 |
| 196549 175 | Drive Kit John Deere Z Series C/RVS/RSD (18ft) | 32 |
| 196549 175B | Drive Kit John Deere Z Series C/RVS/RSD (18ft) (2004 Onwards) | 32 |

| | | |
|-------------|---|----|
| 196549 176 | Drive Kit John Deere Z Series C/RVS/RSD (20ft) | 34 |
| 196549 176B | Drive Kit John Deere Z Series C/RVS/RSD (20ft) (2004 Onwards) | 34 |
| 196549 178 | Drive Kit John Deere Z Series C/RVS/RSD/XCV (22-42ft) | 36 |
| 196549 178B | Drive Kit John Deere Z Series C/RVS/RSD/XCV (22-42ft) (2004 Onwards) | 36 |
| KIT-00931 | PTO Support Kit | 38 |
| KIT-00975 | Drive Coupling Adaptor Kit | 40 |

Hydraulic Kits 43

| | | |
|-----------|---|----|
| KIT-01702 | Hydraulic Probe Adaptor | 44 |
| KIT-01707 | Hydraulic Probe Adaptor | 46 |
| KIT-01714 | Hydraulic Fitting Kit John Deere Z Series | 48 |
| KIT-01727 | Hydraulic Multicoupler Kit | 50 |
| KIT-01733 | JD S Series Variable Feeder Hydraulic KIT | 52 |
| KIT-01737 | JD X9 Hydraulic Loom Kit | 54 |

ADAPTOR PLATES

Shelbourne Reynolds Engineering Limited

| | | | | | | | |
|------------------------|-----------|----------------------|-----|---|---------|-------------|-----|
| ASSY NUMBER: 196555 03 | | | | ASSY DESCRIPTION: ADAPTOR PLATE ASSY JD (USA) | | | |
| ITEM | PART NO | DESCRIPTION | QTY | ITEM | PART NO | DESCRIPTION | QTY |
| 1 | KIT-00632 | ADAPTOR PLATE SUB | 1 | | | | |
| 2 | KIT-00804 | LEVELLING SPACER KIT | A/R | | | | |

Shelbourne Reynolds Engineering Limited

| | | | | | | | |
|------------------------|-----------|-------------------|-----|---|---------|-------------|-----|
| ASSY NUMBER: 196555 04 | | | | ASSY DESCRIPTION: ADAPTOR PLATE ASSY JD (ERP) | | | |
| ITEM | PART NO | DESCRIPTION | QTY | ITEM | PART NO | DESCRIPTION | QTY |
| 1 | KIT-00632 | ADAPTOR PLATE SUB | 1 | | | | |
| 2 | KIT-00805 | FIXING KIT | 1 | | | | |

Shelbourne Reynolds Engineering Limited

| | | | | | | | |
|------------------------|-----------|-------------------|-----|--|---------|-------------|-----|
| ASSY NUMBER: 196555 05 | | | | ASSY DESCRIPTION: ADAPTOR PLATE ASSY JD (Z SERIES) | | | |
| ITEM | PART NO | DESCRIPTION | QTY | ITEM | PART NO | DESCRIPTION | QTY |
| 1 | KIT-00632 | ADAPTOR PLATE SUB | 1 | | | | |

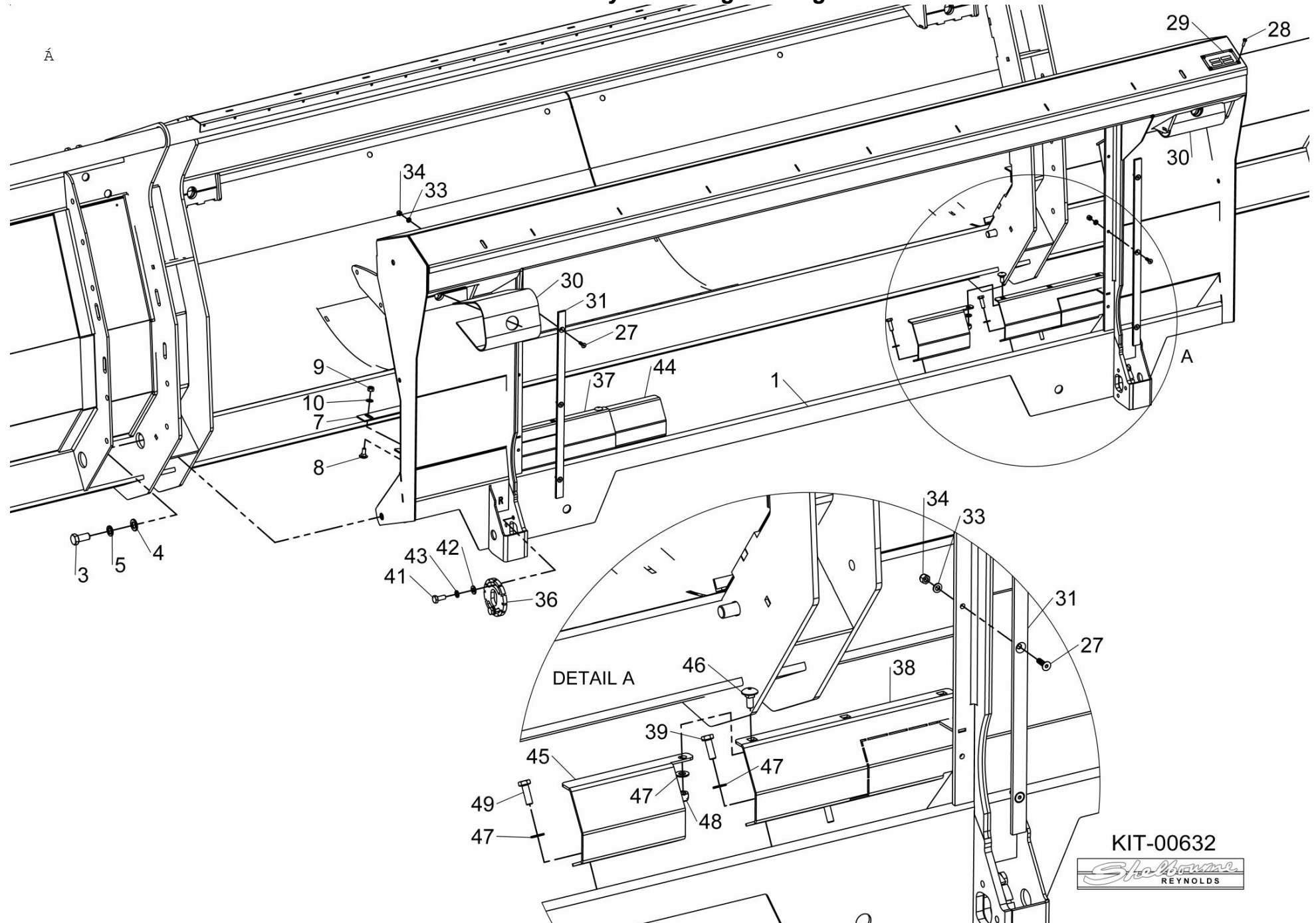
Shelbourne Reynolds Engineering Limited

| | | | | | | | |
|------------------------|-----------|-------------------|-----|---|---------|-------------|-----|
| ASSY NUMBER: 196555 29 | | | | ASSY DESCRIPTION: JD X9 RSD ADAPTOR PLATE SUB | | | |
| ITEM | PART NO | DESCRIPTION | QTY | ITEM | PART NO | DESCRIPTION | QTY |
| 1 | KIT-00651 | ADAPTOR PLATE SUB | 1 | | | | |

Shelbourne Reynolds Engineering Limited

| ASSY NUMBER: KIT-00632 | | | | ASSY DESCRIPTION: ADAPT.PL.SUB ASSY-J.D. | | | |
|------------------------|-----------|--------------------------------|-----|--|-----------|--------------------------------|-----|
| ITEM | PART NO | DESCRIPTION | QTY | ITEM | PART NO | DESCRIPTION | QTY |
| 1 | 197310 01 | FRAME WELD ASSY (FROM 2005) | 1 | 34 | NUT-0260 | NYLOC NUT (EARLY 2010 & ON) | 6 |
| OR | 194292 01 | FRAME WELD ASSY (UPTO 2004) | | OR | NUT-0260 | NYLOC NUT (UPTO EARLY 2010) | 8 |
| 2 | | | | 35 | | | |
| 3 | HSS-0315 | SET SCREW | 2 | 36 | 197312 01 | ADJUSTER PLATE | 2 |
| 4 | WSH-0024 | PLAIN WASHER | 2 | 37 | 198282 01 | SCRAPER EXT PLT LH | 1 |
| 5 | WSH-0070 | SPRING WASHER | 2 | OR | 197311 01 | SCRAPER EXT (2005-EARLY 2010) | 1 |
| 6 | | | | 38 | 198282 02 | SCRAPER EXT RH (EARLY 2010&ON) | 1 |
| 7 | 197313 01 | SCRAPER (2005-2008) | 2 | OR | 197311 02 | SCRAPER EXT RH (2005-EARLY | 1 |
| OR | 194284 02 | SCRAPER (UPTO 2004) | 2 | 39 | HSS-0145 | SETSCREW | 4 |
| 8 | BLT-4710 | COACH BOLT (2009& ON) | 2 | 40 | | | |
| OR | BLT-4710 | COACH BOLT (UPTO 2009) | 6 | 41 | HSS-0191 | SETSCREW | 4 |
| 9 | NUT-0263 | NYLOC NUT (2009 & ON) | 6 | 42 | WSH-0015 | PLAIN WASHER | 4 |
| OR | NUT-0263 | NYLOC NUT (UPTO 2009) | 10 | 43 | WSH-0061 | SPRING WASHER | 4 |
| 10 | WSH-0012 | PLAIN WASHER (2009& ON) | 6 | 44 | 198284 01 | SCRAPER EXTENSION LH | A/R |
| OR | WSH-0012 | PLAIN WASHER (UPTO 2009) | 10 | 45 | 198284 02 | SCRAPER EXTENSION RH | A/R |
| 11 | | | | 46 | BLT-4710 | COACH BOLT | A/R |
| 12 | | | | 47 | WSH-0012 | PLAIN WASHER | A/R |
| 13 | | | | 48 | NUT-0263 | NYLOC NUT | A/R |
| 14 | | | | 49 | HSS-0145 | SETSCREW | A/R |
| 15 | | | | | | | |
| 16 | | | | | | | |
| 17 | | | | | | | |
| 18 | | | | | | | |
| 19 | | | | | | | |
| 20 | | | | | | | |
| 21 | | | | | | | |
| 22 | | | | | | | |
| 23 | | | | | | | |
| 24 | | | | | | | |
| 25 | | | | | | | |
| 26 | | | | | | | |
| 27 | SCW-1580 | SKT CSK HD (EARLY 2010&ON) | 6 | | | | |
| OR | SCW-1580 | SKT CSK HD (UPTO EARLY 2010) | 2 | | | | |
| 28 | POP-0006 | POP RIVET (UPTO 2009) | 4 | | | | |
| 29 | 134024 05 | IDENTIFICATION PLT (UPTO 2009) | 1 | | | | |
| 30 | 195093 01 | ADAPT.PLT.DUST COVER | 2 | | | | |
| 31 | 197208 01 | PACKER PLATE | 2 | | | | |
| 32 | SCW-1600 | SKT CSK HD (UPTO 2010) | 6 | | | | |
| 33 | WSH-0009 | PLAIN WASHER (EARLY 2010&ON) | 6 | | | | |
| OR | WSH-0009 | PLAIN WASHER (UPTO EARLY 2010) | 8 | | | | |

Shelbourne Reynolds Engineering Limited

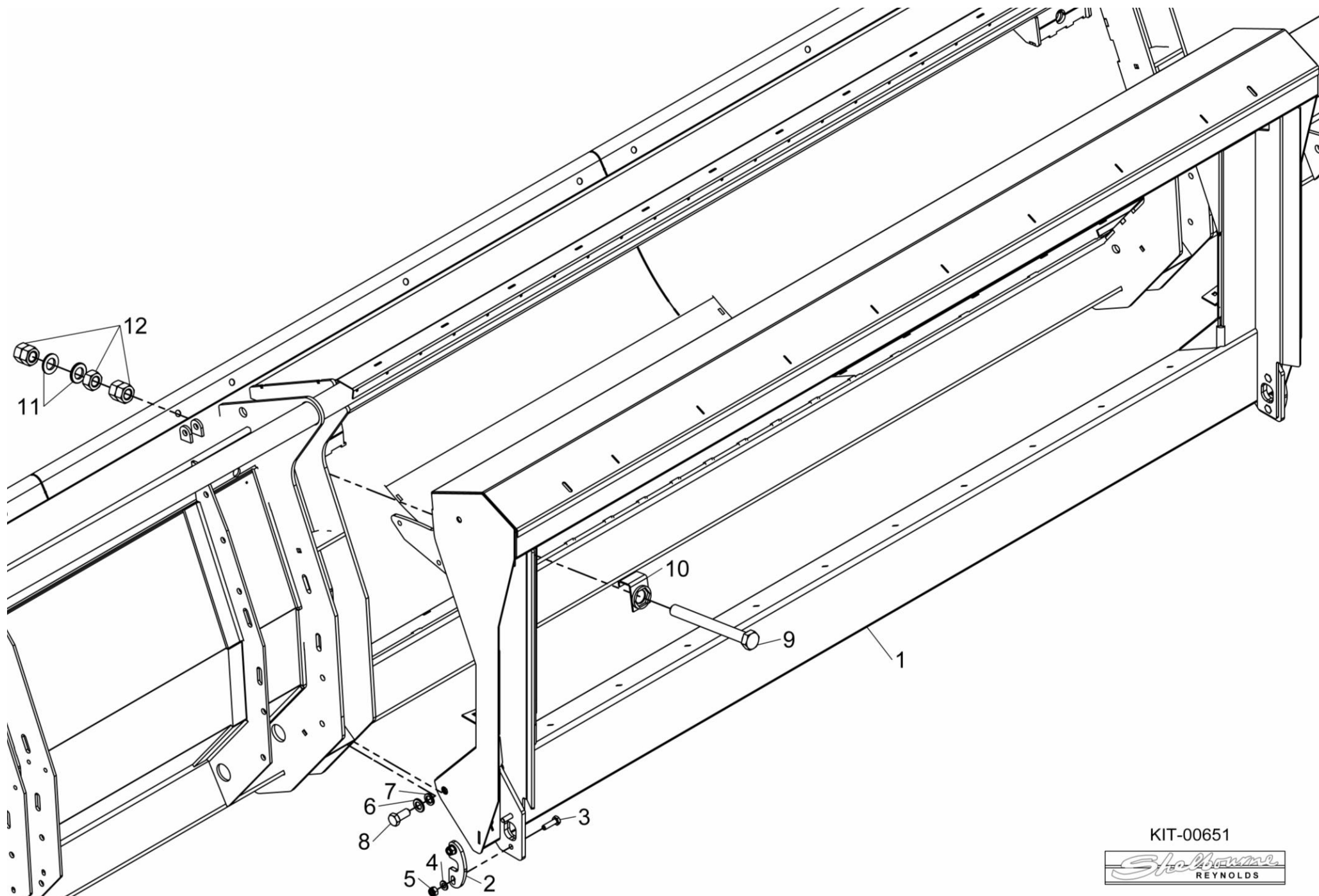


KIT-00632



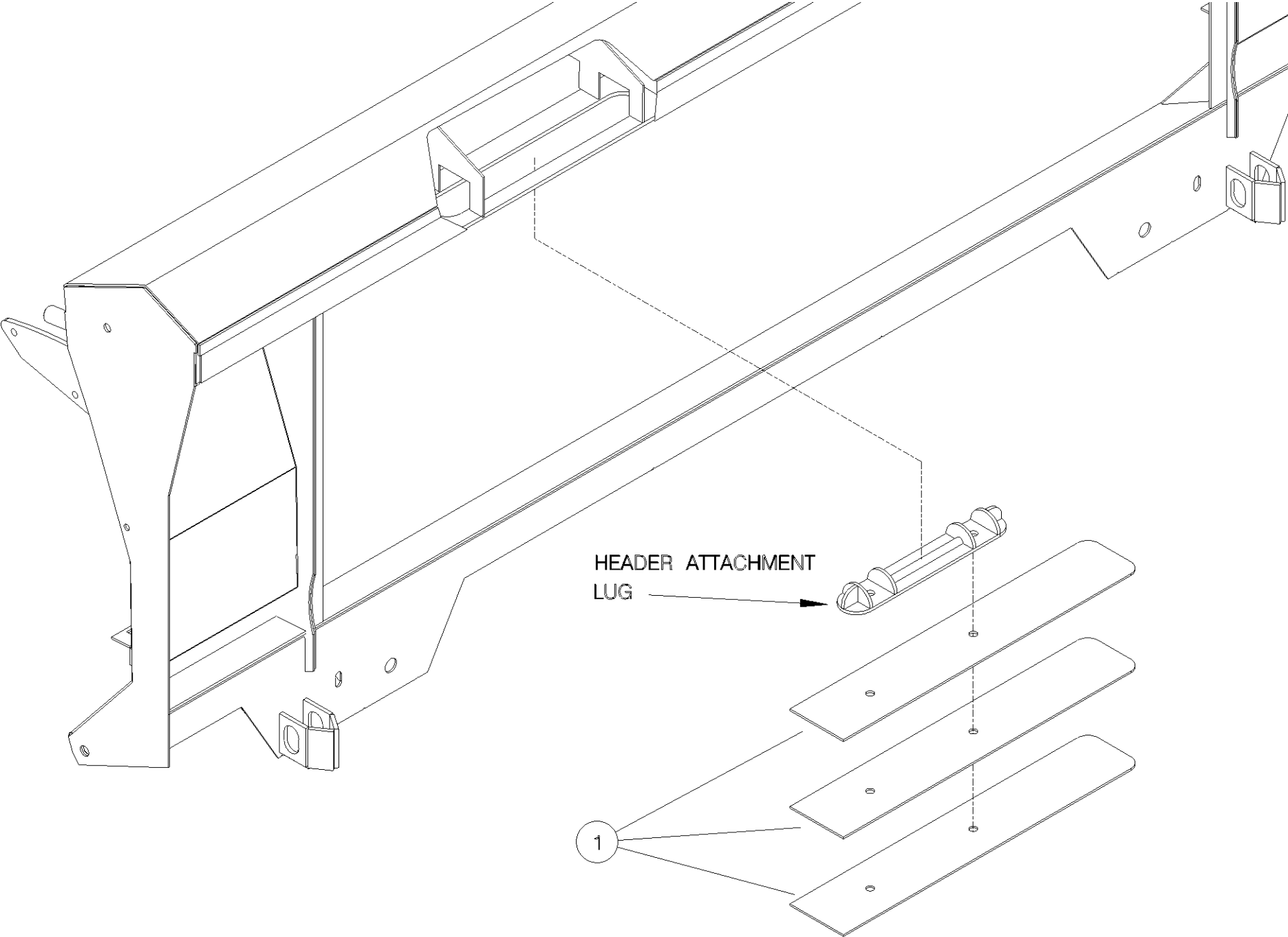
Shelbourne Reynolds Engineering Limited

| ASSY NUMBER: KIT-00651 | | | | ASSY DESCRIPTION: JD X9 ADAPTOR PLATE KIT | | | |
|------------------------|-----------|-----------------------------|-----|---|---------|-------------|-----|
| ITEM | PART NO | DESCRIPTION | QTY | ITEM | PART NO | DESCRIPTION | QTY |
| 1 | 292620 01 | JD X9 RSD ADAPTOR PLATE W/A | 1 | | | | |
| 2 | 198521 01 | PIN HOLE PLATE | 2 | | | | |
| 3 | HSS-0198 | SET SCREW | 4 | | | | |
| 4 | WSH-0015 | PLAIN WASHER | 4 | | | | |
| 5 | NUT-0265 | NUT | 4 | | | | |
| 6 | WSH-0024 | PLAIN WASHER | 2 | | | | |
| 7 | WSH-0070 | SPRING WASHER | 2 | | | | |
| 8 | HSS-0315 | SET SCREW | 2 | | | | |
| 9 | 292638 01 | SET SCREW | 2 | | | | |
| 10 | 194987 01 | ADPT PLATE LOCKING ASSY | 2 | | | | |
| 11 | WSH-0036 | PLAIN WSH FORM A PLT | 4 | | | | |
| 12 | NUT-0190 | PLAIN NUT | 10 | | | | |



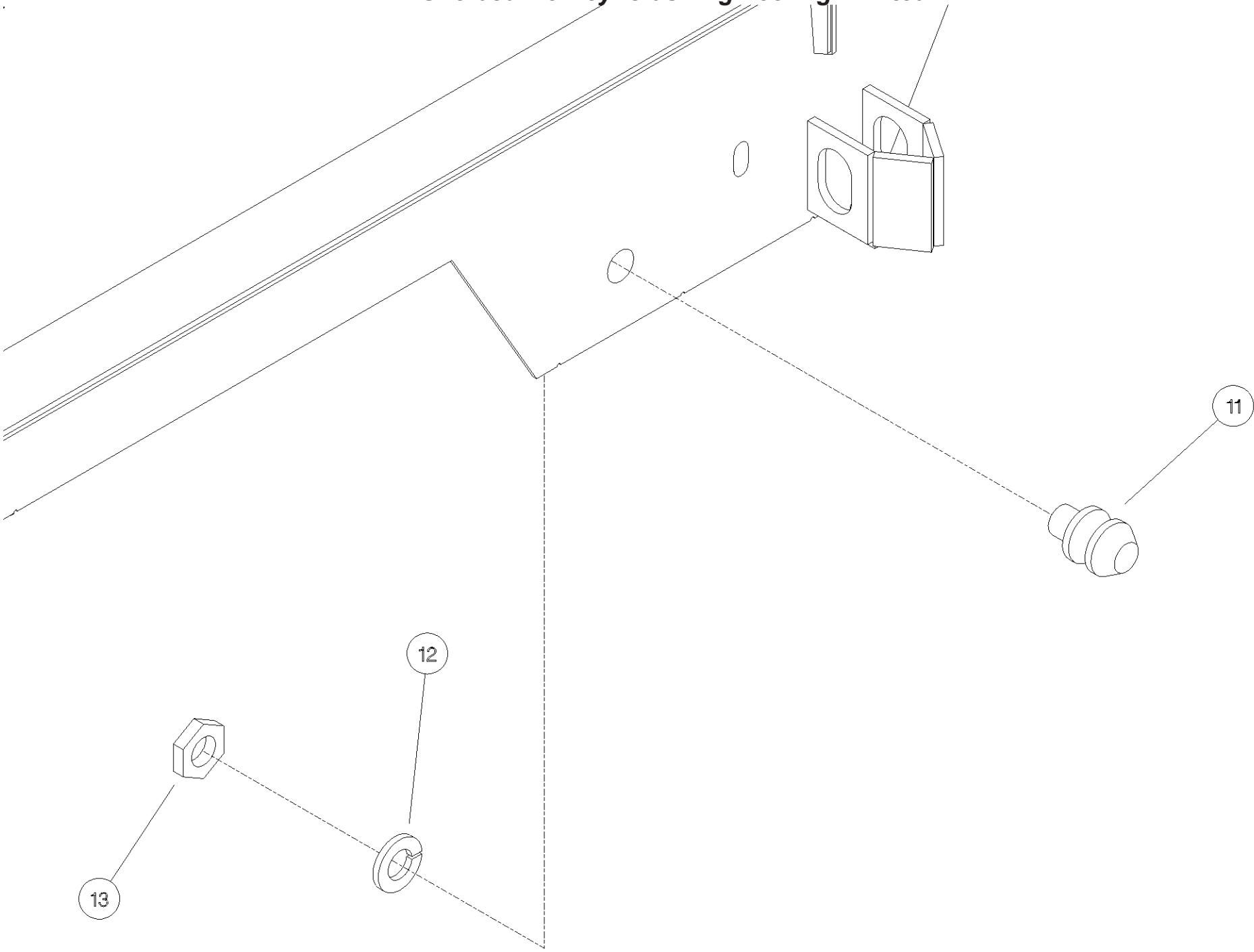
Shelbourne Reynolds Engineering Limited

| ASSY NUMBER: KIT-00804 | | | | ASSY DESCRIPTION: LEVELLING SPACERS (JD) | | | |
|------------------------|-----------|-------------|-----|--|---------|-------------|-----|
| ITEM | PART NO | DESCRIPTION | QTY | ITEM | PART NO | DESCRIPTION | QTY |
| 1 | 191595 01 | SPACER | 3 | | | | |



Shelbourne Reynolds Engineering Limited

| ASSY NUMBER: KIT-00805 | | | | ASSY DESCRIPTION: BOTTOM PICK UP FIXING KIT JD (ERP) | | | |
|------------------------|----------|---------------|-----|--|---------|-------------|-----|
| ITEM | PART NO | DESCRIPTION | QTY | ITEM | PART NO | DESCRIPTION | QTY |
| 1 | | | 1 | | | | |
| 2 | | | | | | | |
| 3 | | | | | | | |
| 4 | | | | | | | |
| 5 | | | | | | | |
| 6 | | | | | | | |
| 7 | | | | | | | |
| 8 | | | | | | | |
| 9 | | | | | | | |
| 10 | | | | | | | |
| 11 | 130130 | PICK UP PIN | 2 | | | | |
| 12 | WSH-0075 | SPRING WASHER | 2 | | | | |
| 13 | NUT-0385 | HALF NUT | 2 | | | | |
| 14 | | | | | | | |
| 15 | | | | | | | |
| 16 | | | | | | | |
| 17 | | | | | | | |
| 18 | | | | | | | |
| 19 | | | | | | | |
| 20 | | | | | | | |
| 21 | | | | | | | |
| 22 | | | | | | | |
| 23 | | | | | | | |
| 24 | | | | | | | |
| 25 | | | | | | | |
| 26 | | | | | | | |
| 27 | | | | | | | |
| 29 | | | | | | | |
| 30 | | | | | | | |
| 31 | | | | | | | |
| 32 | | | | | | | |
| 33 | | | | | | | |
| 34 | | | | | | | |
| 35 | | | | | | | |
| 36 | | | | | | | |
| 37 | | | | | | | |
| 38 | | | | | | | |
| 39 | | | | | | | |
| 40 | | | | | | | |
| 41 | | | | | | | |

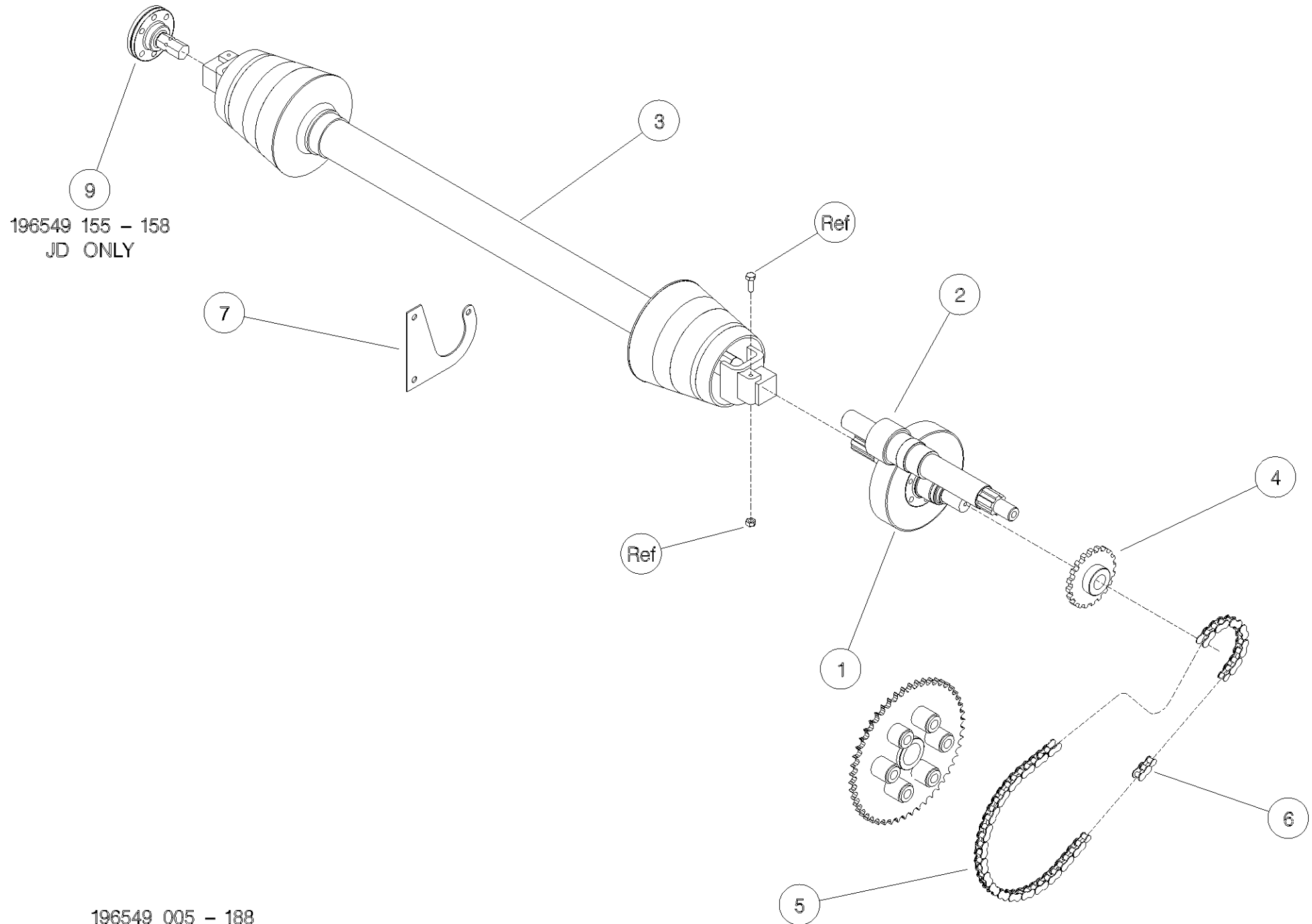


DRIVE OPTIONS

Shelbourne Reynolds Engineering Limited

| ASSY NUMBER: 196549 005 | | | | ASSY DESCRIPTION: DRIVE KIT CASE IH C/RVs (18' /5.4m) | | | |
|-------------------------|-----------|------------------------------|-----|---|---------|-------------|-----|
| ITEM | PART NO | DESCRIPTION | QTY | ITEM | PART NO | DESCRIPTION | QTY |
| 1A | 192592 06 | INPUT GEAR (47t) | 1 | | | | |
| | | WITH ROTOR GEARBOX | | | | | |
| 1B | 192592 09 | INPUT GEAR (37t) | 1 | | | | |
| | | WITHOUT ROTOR GEARBOX | | | | | |
| 1D/E | 192592 13 | INPUT GEAR (33t) | 1 | | | | |
| | | WITHOUT ROTOR GEARBOX | | | | | |
| 2A | 193599 06 | PINION (22t) | 1 | | | | |
| | | WITH ROTOR GEARBOX | | | | | |
| 2B | 193599 09 | PINION (32t) | 1 | | | | |
| | | WITHOUT ROTOR GEARBOX | | | | | |
| 2D | 198999 09 | PINION (32t) | 1 | | | | |
| | | 65MM SHAFT | | | | | |
| 3 | PTO-26005 | PTO (W2500 SERIES) | 1 | | | | |
| 3a | PTO-00070 | PTO YOKE-COMBINE (SPARES) | 1 | | | | |
| 3b | PTO-00083 | PTO CROSS BEARING | A/R | | | | |
| 3c | PTO-00119 | PTO SHEAR BOLT CLUTCH-HEADER | 1 | | | | |
| 3d | PTO-00093 | PTO GUARD ASSY (SPARES) | 1 | | | | |
| 3E | BLTA10380 | SHEARBOLT | A/R | | | | |
| 3F | NUT-0265 | NYLOC NUT | A/R | | | | |
| 4 | 192768 18 | SPROCKET | 1 | | | | |
| 5 | CHN-01920 | CHAIN (93 LINKS) | 1 | | | | |
| | | (FIXED GEARBOX MACHINES) | | | | | |
| OR | CHN-01920 | CHAIN (101 LINKS) | 1 | | | | |
| | | (PIVOTING GEARBOX MACHINES) | | | | | |
| 6 | CHN-01901 | JOINING LINK | 1 | | | | |
| 7 | KIT-00931 | PTO SUPPORT KIT | 1 | | | | |

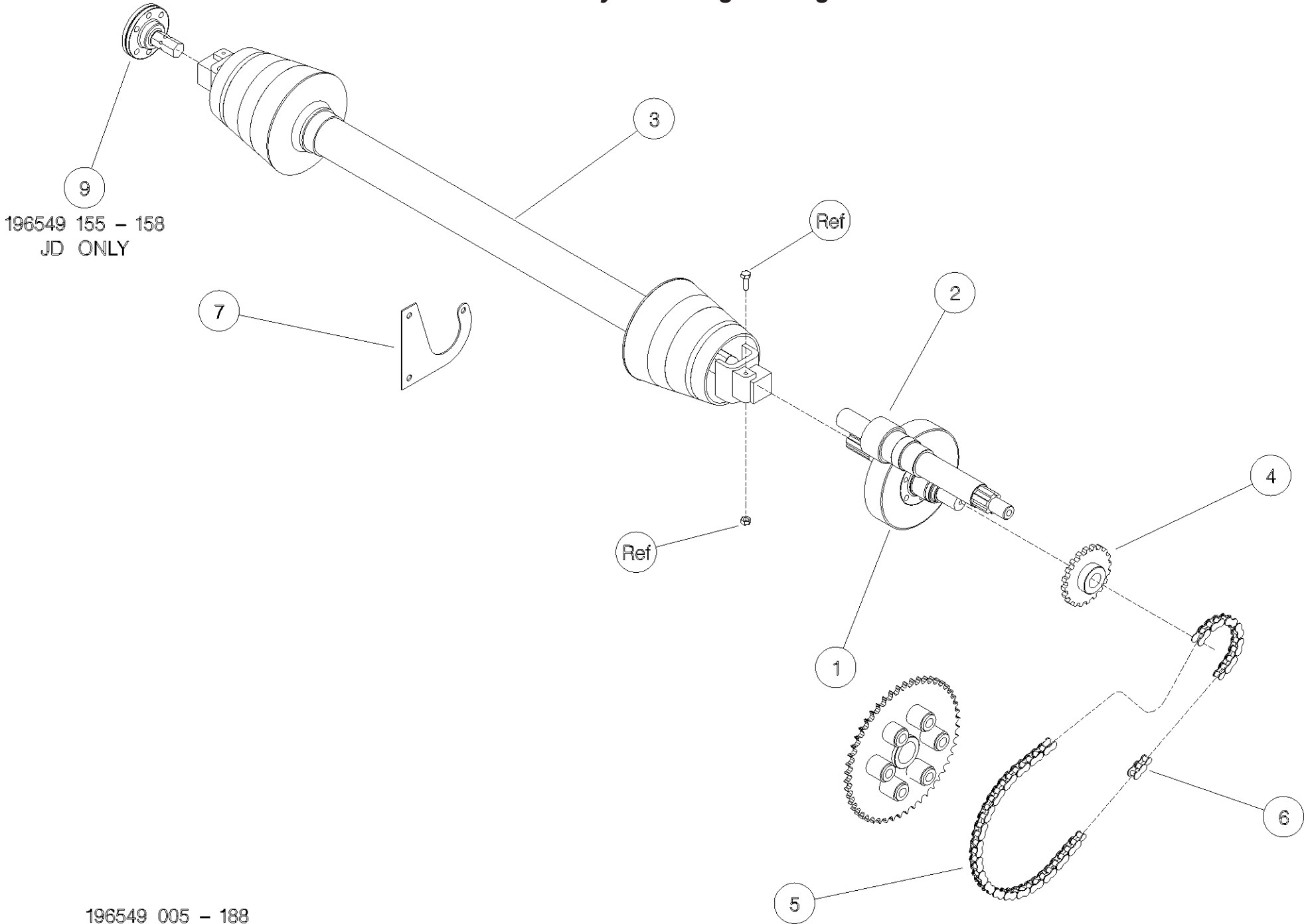
Shelbourne Reynolds Engineering Limited



196549 005 - 188

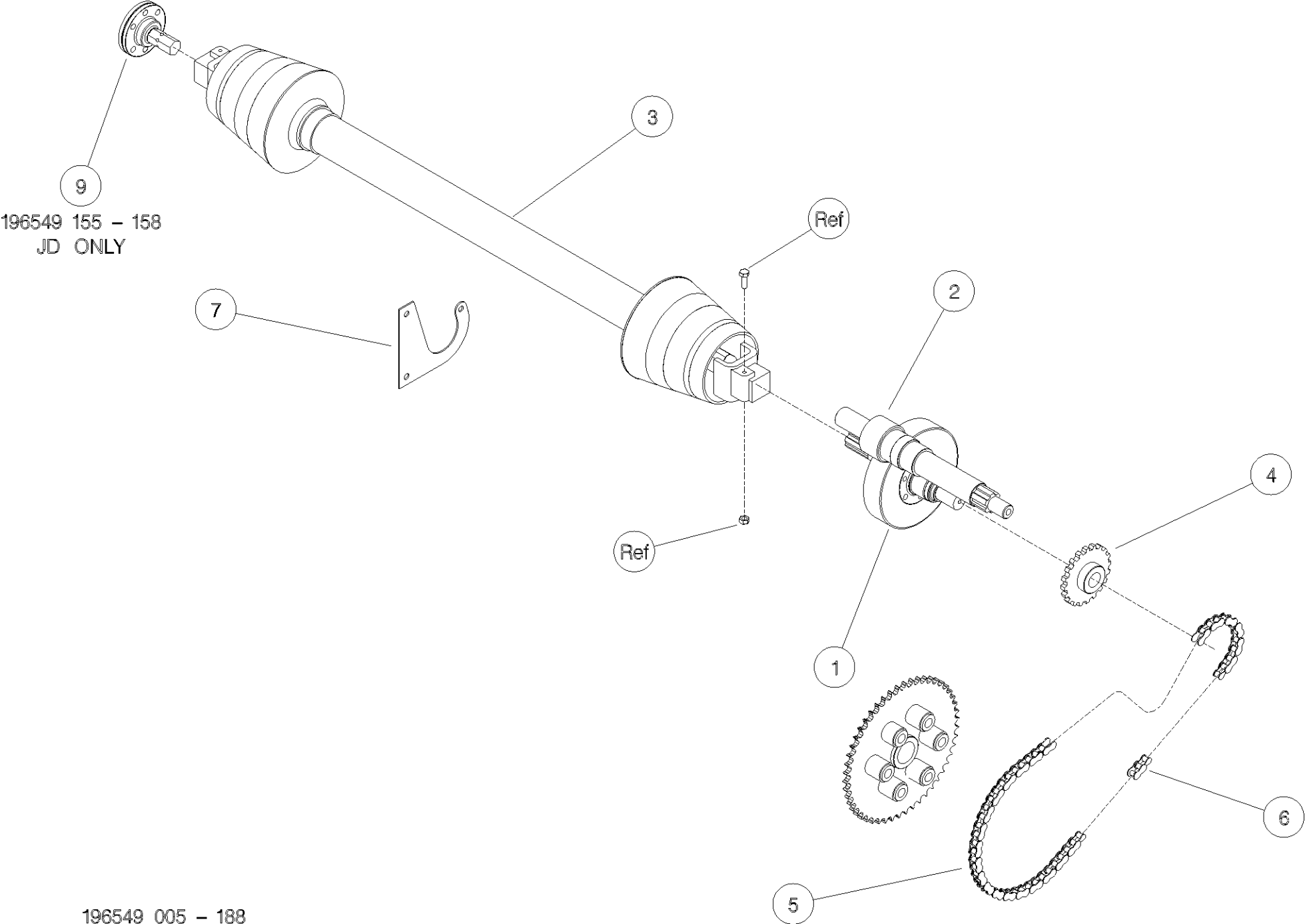
Shelbourne Reynolds Engineering Limited

| ASSY NUMBER: 196549 006 | | | | ASSY DESCRIPTION: DRIVE KIT CASE IH C/RVs (20' /6.0m) | | | |
|-------------------------|-----------|------------------------------|-----|---|---------|-------------|-----|
| ITEM | PART NO | DESCRIPTION | QTY | ITEM | PART NO | DESCRIPTION | QTY |
| 1A | 192592 06 | INPUT GEAR (47t) | 1 | | | | |
| OR | | WITH ROTOR GEARBOX | | | | | |
| 1B | 192592 09 | INPUT GEAR (37t) | 1 | | | | |
| | | WITHOUT ROTOR GEARBOX | | | | | |
| 2A | 193599 06 | PINION (22t) | 1 | | | | |
| | | WITH ROTOR GEARBOX | | | | | |
| 2B | 193599 09 | PINION (32t) | 1 | | | | |
| | | WITHOUT ROTOR GEARBOX | | | | | |
| 2D | 198999 09 | PINION (32t) | 1 | | | | |
| | | 65MM SHAFT | | | | | |
| 3 | PTO-26006 | PTO (W2500 SERIES) | 1 | | | | |
| 3a | PTO-00070 | PTO YOKE-COMBINE (SPARES) | 1 | | | | |
| 3b | PTO-00083 | PTO CROSS BEARING | A/R | | | | |
| 3c | PTO-00119 | PTO SHEAR BOLT CLUTCH-HEADER | 1 | | | | |
| 3d | PTO-00093 | PTO GUARD ASSY (SPARES) | 1 | | | | |
| 3E | BLTA10380 | SHEARBOLT | A/R | | | | |
| 3F | NUT-0265 | NYLOC NUT | A/R | | | | |
| 4 | 192768 18 | SPROCKET | 1 | | | | |
| 5 | CHN-01920 | CHAIN (93 LINKS) | 1 | | | | |
| | | (FIXED GEARBOX MACHINES) | | | | | |
| OR | CHN-01920 | CHAIN (101 LINKS) | 1 | | | | |
| | | (PIVOTING GEARBOX MACHINES) | | | | | |
| 6 | CHN-01901 | JOINING LINK | 1 | | | | |
| 7 | KIT-00931 | PTO SUPPORT KIT | 1 | | | | |



Shelbourne Reynolds Engineering Limited

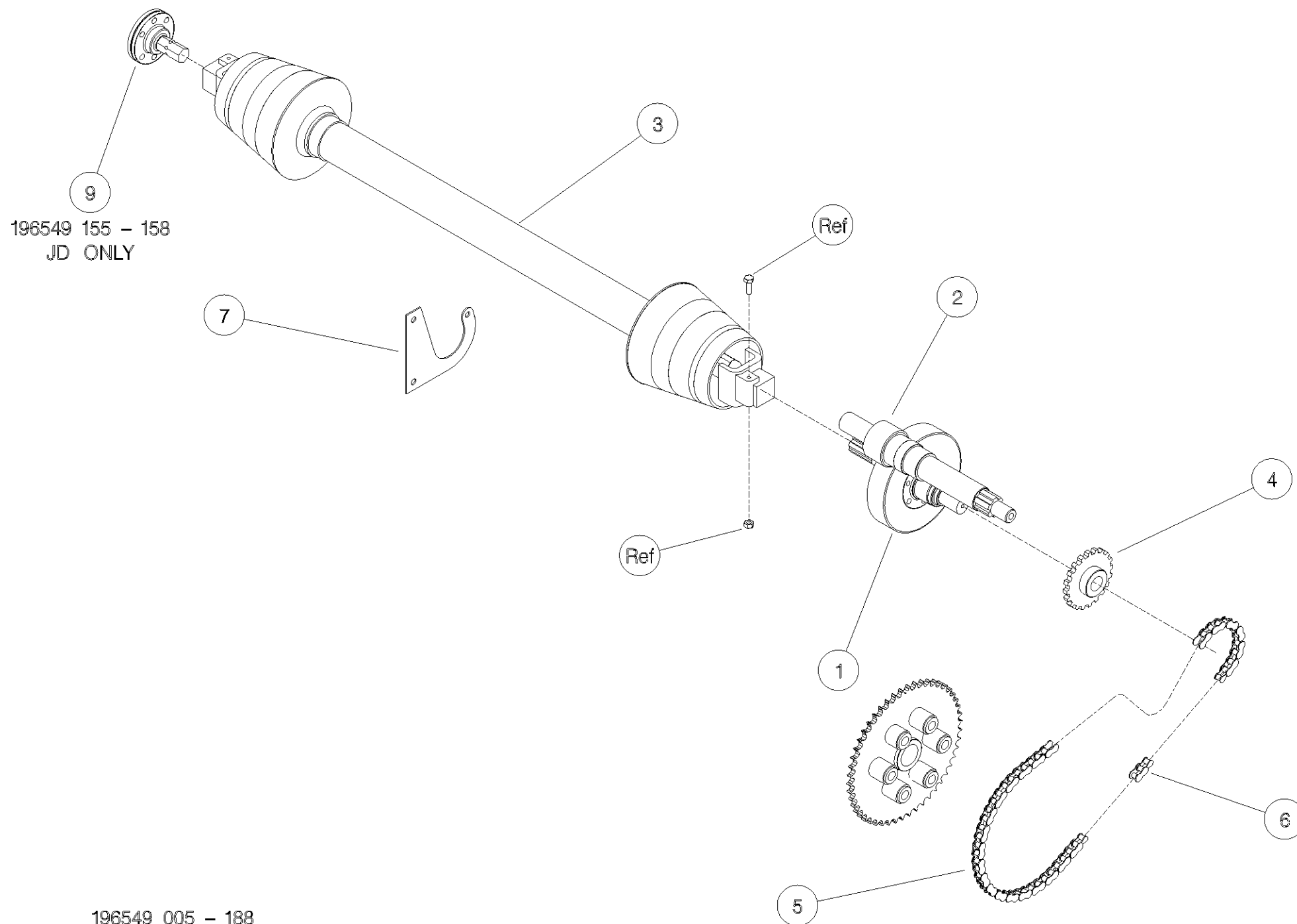
| ASSY NUMBER: 196549 008 | | | | ASSY DESCRIPTION: DRIVE KIT CASE IH C/RVs (22'-32') | | | |
|-------------------------|-----------|------------------------------|-----|---|---------|-------------|-----|
| ITEM | PART NO | DESCRIPTION | QTY | ITEM | PART NO | DESCRIPTION | QTY |
| 1A | 192592 06 | INPUT GEAR (47t) | 1 | | | | |
| OR | | WITH ROTOR GEARBOX | | | | | |
| 1B | 192592 09 | INPUT GEAR (37t) | 1 | | | | |
| | | WITHOUT ROTOR GEARBOX | | | | | |
| 2A | 193599 06 | PINION (22t) | 1 | | | | |
| | | WITH ROTOR GEARBOX | | | | | |
| 2B | 193599 09 | PINION (32t) | 1 | | | | |
| | | WITHOUT ROTOR GEARBOX | | | | | |
| 2D | 198999 09 | PINION (32t) | 1 | | | | |
| | | 65MM SHAFT | | | | | |
| 3 | PTO-26002 | PTO (W2500 SERIES) | 1 | | | | |
| 3a | PTO-00070 | PTO YOKE-COMBINE (SPARES) | 1 | | | | |
| 3b | PTO-00083 | PTO CROSS BEARING | A/R | | | | |
| 3c | PTO-00119 | PTO SHEAR BOLT CLUTCH-HEADER | 1 | | | | |
| 3d | PTO-00093 | PTO GUARD ASSY (SPARES) | 1 | | | | |
| 3E | BLTA10380 | SHEARBOLT | A/R | | | | |
| 3F | NUT-0265 | NYLOC NUT | A/R | | | | |
| 4 | 192768 18 | SPROCKET | 1 | | | | |
| 5 | CHN-01920 | CHAIN (93 LINKS) | 1 | | | | |
| | | (FIXED GEARBOX MACHINES) | | | | | |
| OR | CHN-01920 | CHAIN (101 LINKS) | 1 | | | | |
| | | (PIVOTING GEARBOX MACHINES) | | | | | |
| 6 | CHN-01901 | JOINING LINK | 1 | | | | |
| 7 | KIT-00931 | PTO SUPPORT KIT | 1 | | | | |



Shelbourne Reynolds Engineering Limited

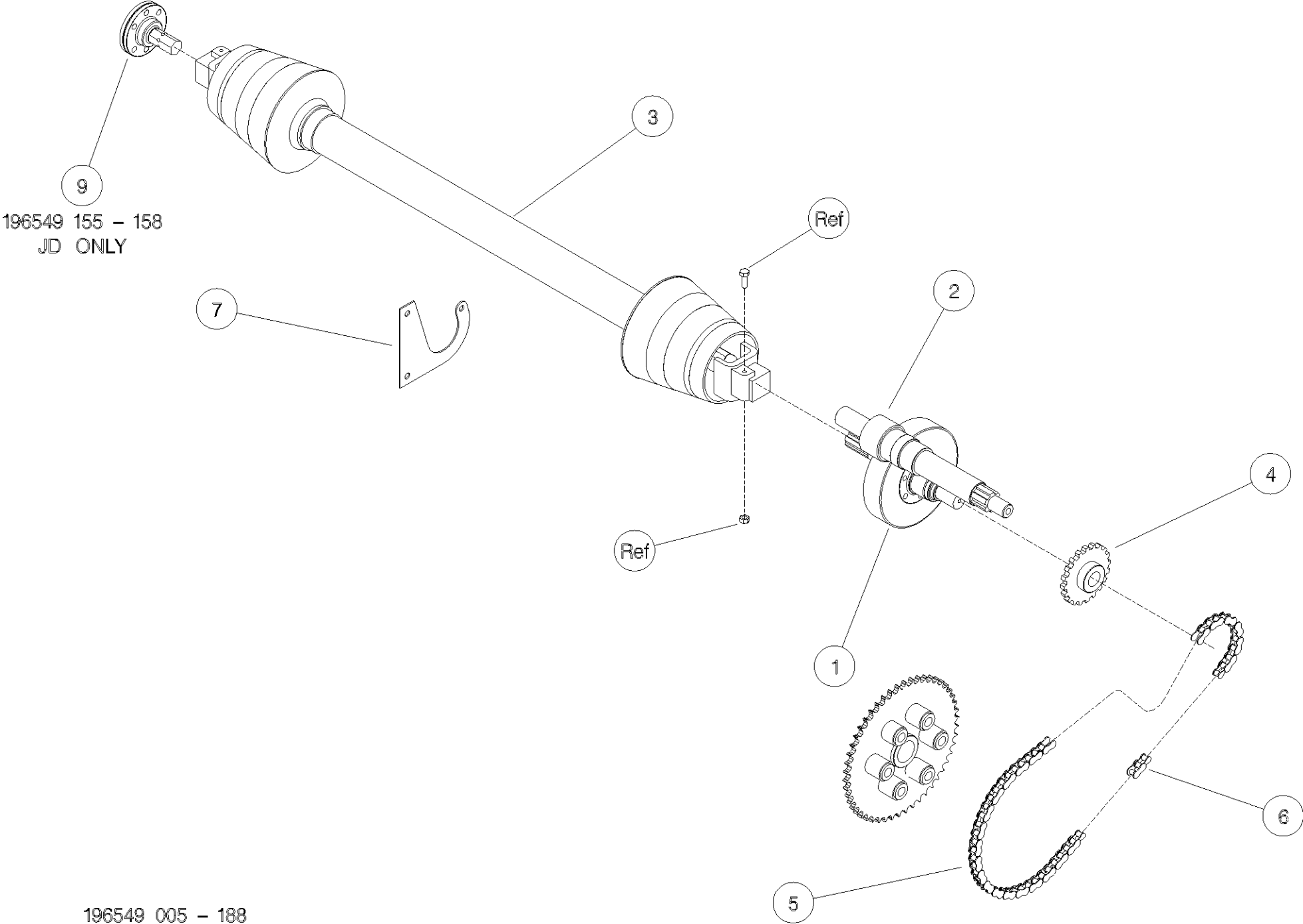
| ASSY NUMBER: 196549 155 | | | | ASSY DESCRIPTION: DRIVE KIT JD 9600,8820 C/RVs (18' /5.4M) | | | |
|-------------------------|-----------|------------------------------|-----|--|---------|-------------|-----|
| ITEM | PART NO | DESCRIPTION | QTY | ITEM | PART NO | DESCRIPTION | QTY |
| 1A | 192592 06 | INPUT GEAR (47t) | 1 | | | | |
| OR | | WITH ROTOR GEARBOX | | | | | |
| 1B | 192592 09 | INPUT GEAR (37t) | 1 | | | | |
| | | WITHOUT ROTOR GEARBOX | | | | | |
| 2A | 193599 06 | PINION (22t) | 1 | | | | |
| | | WITH ROTOR GEARBOX | | | | | |
| 2B | 193599 09 | PINION (32t) | 1 | | | | |
| | | WITHOUT ROTOR GEARBOX | | | | | |
| 2D | 198999 09 | PINION (32t) | 1 | | | | |
| | | 65MM SHAFT | | | | | |
| 3 | PTO-26005 | PTO (W2500 SERIES) | 1 | | | | |
| 3a | PTO-00070 | PTO YOKE-COMBINE (SPARES) | 1 | | | | |
| 3b | PTO-00083 | PTO CROSS BEARING | A/R | | | | |
| 3c | PTO-00119 | PTO SHEAR BOLT CLUTCH-HEADER | 1 | | | | |
| 3d | PTO-00093 | PTO GUARD ASSY (SPARES) | 1 | | | | |
| 3E | BLTA10380 | SHEARBOLT | A/R | | | | |
| 3F | NUT-0265 | NYLOC NUT | A/R | | | | |
| 4 | 192768 18 | SPROCKET | 1 | | | | |
| 5 | CHN-01920 | CHAIN (93 LINKS) | 1 | | | | |
| | | (FIXED GEARBOX MACHINES) | | | | | |
| OR | CHN-01920 | CHAIN (101 LINKS) | 1 | | | | |
| | | (PIVOTING GEARBOX MACHINES) | | | | | |
| 6 | CHN-01901 | JOINING LINK | 1 | | | | |
| 7 | KIT-00931 | PTO SUPPORT KIT | 1 | | | | |
| 8 | | | | | | | |
| 9 | KIT-00975 | JD DRIVE ADAPTOR KIT | 1 | | | | |

Shelbourne Reynolds Engineering Limited



Shelbourne Reynolds Engineering Limited

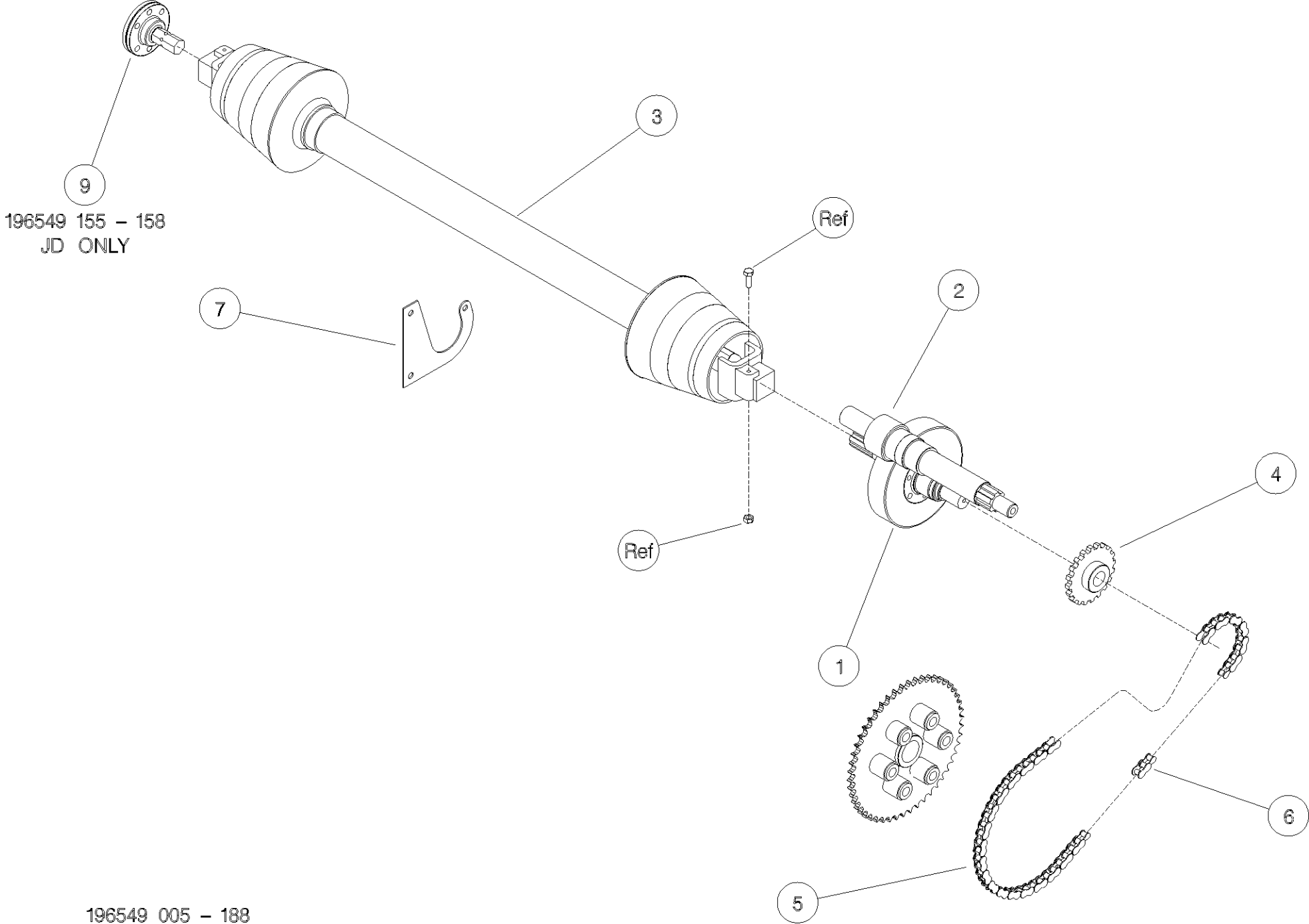
| ASSY NUMBER: 196549 156 | | | | ASSY DESCRIPTION: DRIVE KIT JD 9600,8820 C/RVs (20' /6.0m) | | | |
|-------------------------|-----------|------------------------------|-----|--|---------|-------------|-----|
| ITEM | PART NO | DESCRIPTION | QTY | ITEM | PART NO | DESCRIPTION | QTY |
| 1A | 192592 06 | INPUT GEAR (47t) | 1 | | | | |
| OR | | WITH ROTOR GEARBOX | | | | | |
| 1B | 192592 09 | INPUT GEAR (37t) | 1 | | | | |
| | | WITHOUT ROTOR GEARBOX | | | | | |
| 2A | 193599 06 | PINION (22t) | 1 | | | | |
| | | WITH ROTOR GEARBOX | | | | | |
| 2B | 193599 09 | PINION (32t) | 1 | | | | |
| | | WITHOUT ROTOR GEARBOX | | | | | |
| 2D | 198999 09 | PINION (32t) | 1 | | | | |
| | | 65MM SHAFT | | | | | |
| 3 | PTO-26006 | PTO (W2500 SERIES) | 1 | | | | |
| 3a | PTO-00070 | PTO YOKE-COMBINE (SPARES) | 1 | | | | |
| 3b | PTO-00083 | PTO CROSS BEARING | A/R | | | | |
| 3c | PTO-00119 | PTO SHEAR BOLT CLUTCH-HEADER | 1 | | | | |
| 3d | PTO-00093 | PTO GUARD ASSY (SPARES) | 1 | | | | |
| 3E | BLTA10380 | SHEARBOLT | A/R | | | | |
| 3F | NUT-0265 | NYLOC NUT | A/R | | | | |
| 4 | 192768 18 | SPROCKET | 1 | | | | |
| 5 | CHN-01920 | CHAIN (93 LINKS) | 1 | | | | |
| | | (FIXED GEARBOX MACHINES) | | | | | |
| OR | CHN-01920 | CHAIN (101 LINKS) | 1 | | | | |
| | | (PIVOTING GEARBOX MACHINES) | | | | | |
| 6 | CHN-01901 | JOINING LINK | 1 | | | | |
| 7 | KIT-00931 | PTO SUPPORT KIT | 1 | | | | |
| 8 | | | | | | | |
| 9 | KIT-00975 | JD DRIVE ADAPTOR KIT | 1 | | | | |



196549 155 - 158
JD ONLY

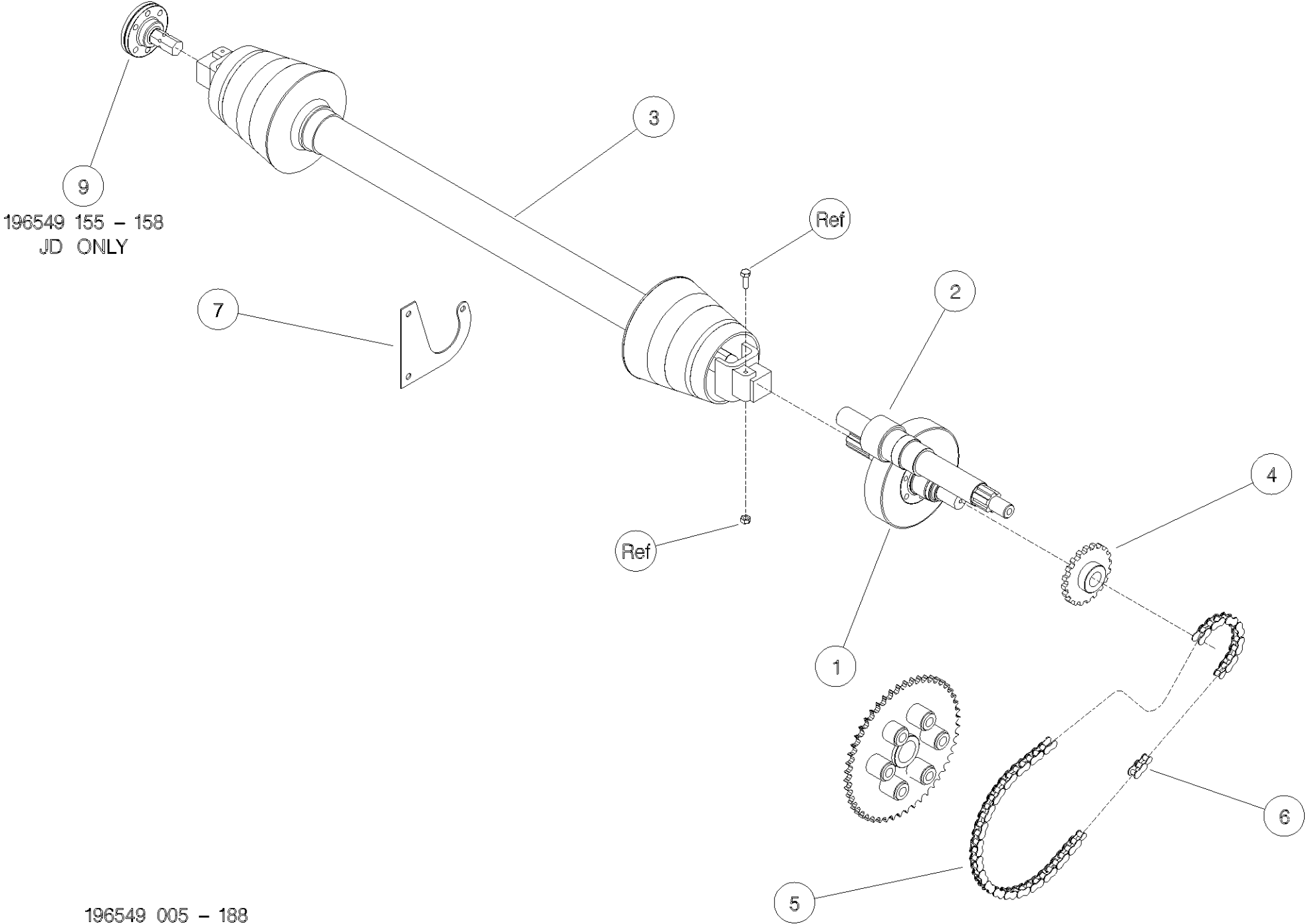
Shelbourne Reynolds Engineering Limited

| ASSY NUMBER: 196549 158 | | | | ASSY DESCRIPTION: DRIVE KIT JD 9600,8820 C/RVs (22-32') | | | |
|-------------------------|-----------|------------------------------|-----|---|---------|-------------|-----|
| ITEM | PART NO | DESCRIPTION | QTY | ITEM | PART NO | DESCRIPTION | QTY |
| 1A | 192592 06 | INPUT GEAR (47t) | 1 | | | | |
| OR | | WITH ROTOR GEARBOX | | | | | |
| 1B | 192592 09 | INPUT GEAR (37t) | 1 | | | | |
| | | WITHOUT ROTOR GEARBOX | | | | | |
| 2A | 193599 06 | PINION (22t) | 1 | | | | |
| | | WITH ROTOR GEARBOX | | | | | |
| 2B | 193599 09 | PINION (32t) | 1 | | | | |
| | | WITHOUT ROTOR GEARBOX | | | | | |
| 2D | 198999 09 | PINION (32t) | 1 | | | | |
| | | 65MM SHAFT | | | | | |
| 3 | PTO-26002 | PTO (W2500 SERIES) | 1 | | | | |
| 3a | PTO-00070 | PTO YOKE-COMBINE (SPARES) | 1 | | | | |
| 3b | PTO-00083 | PTO CROSS BEARING | A/R | | | | |
| 3c | PTO-00119 | PTO SHEAR BOLT CLUTCH-HEADER | 1 | | | | |
| 3d | PTO-00093 | PTO GUARD ASSY (SPARES) | 1 | | | | |
| 3E | BLTA10380 | SHEARBOLT | A/R | | | | |
| 3F | NUT-0265 | NYLOC NUT | A/R | | | | |
| 4 | 192768 18 | SPROCKET | 1 | | | | |
| 5 | CHN-01920 | CHAIN (93 LINKS) | 1 | | | | |
| | | (FIXED GEARBOX MACHINES) | | | | | |
| OR | CHN-01920 | CHAIN (101 LINKS) | 1 | | | | |
| | | (PIVOTING GEARBOX MACHINES) | | | | | |
| 6 | CHN-01901 | JOINING LINK | 1 | | | | |
| 7 | KIT-00931 | PTO SUPPORT KIT | 1 | | | | |
| 8 | | | | | | | |
| 9 | KIT-00975 | JD DRIVE ADAPTOR KIT | 1 | | | | |



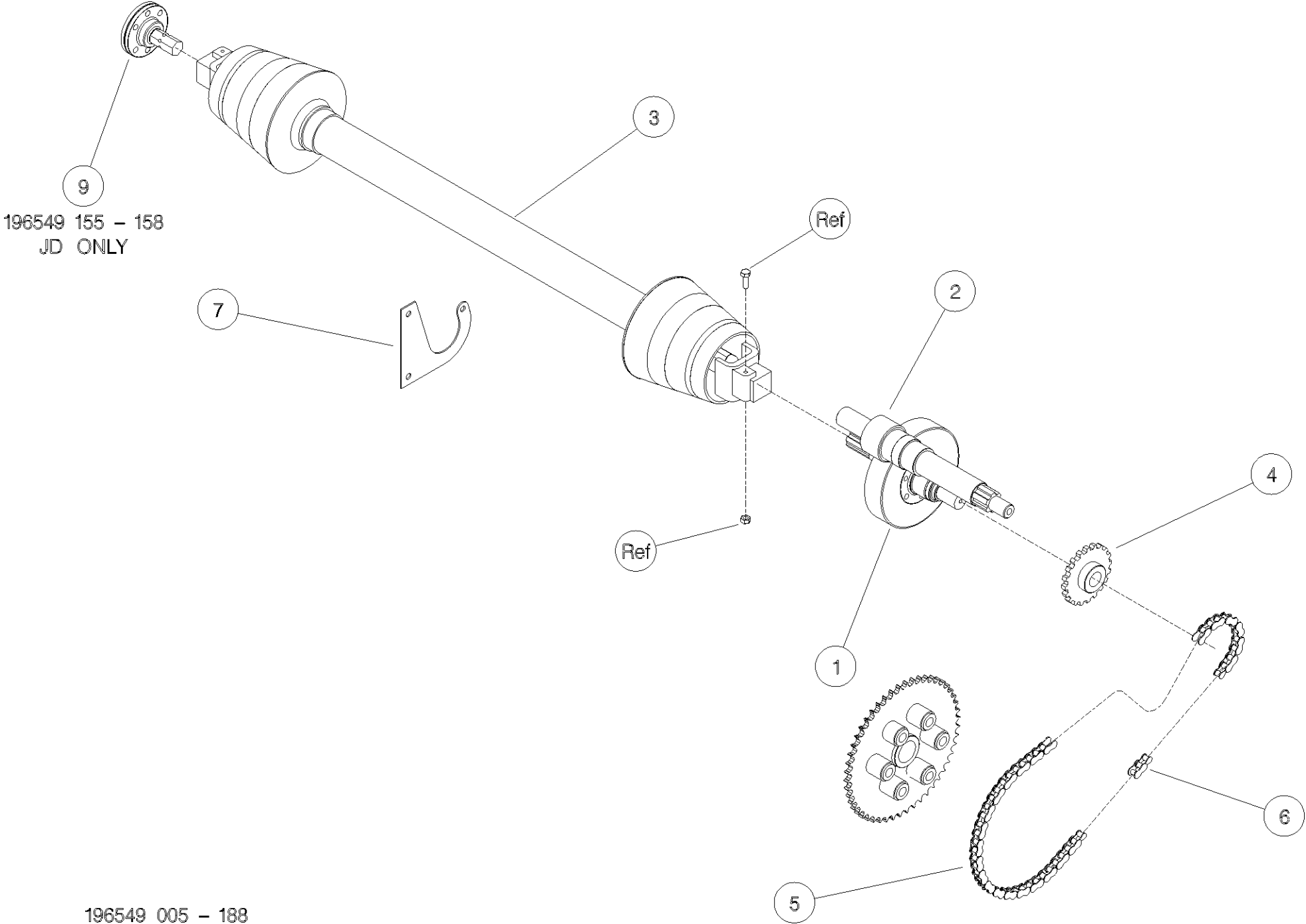
Shelbourne Reynolds Engineering Limited

| ASSY NUMBER: 196549 175 | | | | ASSY DESCRIPTION: DRIVE KIT JD CVS/RVS/RSD (18' 5.4m) | | | |
|-------------------------|-------------|------------------------------|-----|---|---------|-------------|-----|
| ITEM | PART NO | DESCRIPTION | QTY | ITEM | PART NO | DESCRIPTION | QTY |
| 1A | 192592 06 | INPUT GEAR (47t) | 1 | | | | |
| | | WITH ROTOR GEARBOX | | | | | |
| 1B/E | 192592 09 | INPUT GEAR (37t) | 1 | | | | |
| | | WITHOUT ROTOR GEARBOX | | | | | |
| 2A | 193599 06 | PINION (22t) | 1 | | | | |
| | | WITH ROTOR GEARBOX | | | | | |
| 2B | 193599 09 | PINION (32t) | 1 | | | | |
| | | WITHOUT ROTOR GEARBOX | | | | | |
| 2E | 198999 09 | PINION (32t) | 1 | | | | |
| | | GEARBOX WITH 65mm SHAFT | | | | | |
| 3 | PTO-26009WE | PTO | 1 | | | | |
| 3a | PTO-00082WE | PTO YOKE-COMBINE (COLLAR) | | | | | |
| OR | PTO-00082 | PTO YOKE-COMBINE (PUSH PIN) | | | | | |
| 3b | PTO-00083 | PTO CROSS BEARING | | | | | |
| 3c | PTO-00119 | PTO SHEAR BOLT CLUTCH-HEADER | | | | | |
| 3d | PTO-00093WE | PTO GUARD ASSY (BLACK) | | | | | |
| OR | PTO-00093 | PTO GUARD ASSY (YELLOW) | | | | | |
| 3e | PTO-00968 | EASY LOCK GUARD CLIPS (RED) | | | | | |
| 3g | BLTA10384 | SHEARBOLT | | | | | |
| 3h | NUT-0265 | NYLOC NUT | | | | | |
| 4 | 192768 18 | SPROCKET | 1 | | | | |
| 5 | CHN-01991 | CHAIN (99 LINKS PLUS JOINER) | 1 | | | | |
| 5a | CHN-01901 | JOINING LINK | | | | | |
| 6 | CHN-01910 | HALF LINK | A/R | | | | |
| 7 | KIT-00931 | PTO SUPPORT KIT | 1 | | | | |



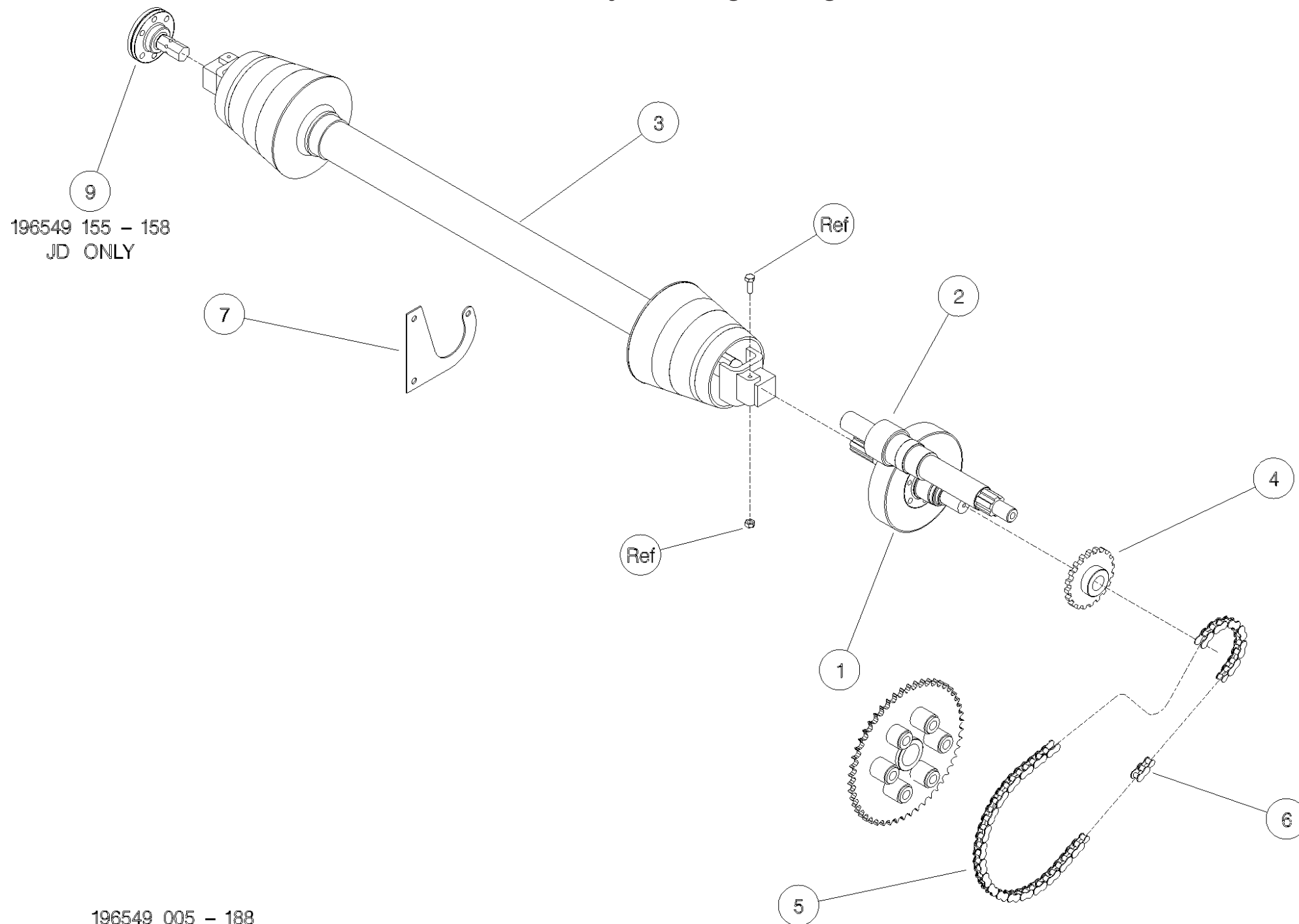
Shelbourne Reynolds Engineering Limited

| ASSY NUMBER: 196549 176 | | | | ASSY DESCRIPTION: DRIVE KIT JD CVS/RVS/RSD (20' 6.0m) | | | |
|-------------------------|-------------|------------------------------|-----|---|---------|-------------|-----|
| ITEM | PART NO | DESCRIPTION | QTY | ITEM | PART NO | DESCRIPTION | QTY |
| 1A | 192592 06 | INPUT GEAR (47t) | 1 | | | | |
| | | WITH ROTOR GEARBOX | | | | | |
| 1B/E | 192592 09 | INPUT GEAR (37t) | 1 | | | | |
| | | WITHOUT ROTOR GEARBOX | | | | | |
| 2A | 193599 06 | PINION (22t) | 1 | | | | |
| | | WITH ROTOR GEARBOX | | | | | |
| 2B | 193599 09 | PINION (32t) | 1 | | | | |
| | | WITHOUT ROTOR GEARBOX | | | | | |
| 2E | 198999 09 | PINION (32t) | 1 | | | | |
| | | GEARBOX WITH 65mm SHAFT | | | | | |
| 3 | PTO-26010WE | PTO | 1 | | | | |
| 3a | PTO-00082WE | PTO YOKE-COMBINE (COLLAR) | | | | | |
| OR | PTO-00082 | PTO YOKE-COMBINE (PUSH PIN) | | | | | |
| 3b | PTO-00083 | PTO CROSS BEARING | | | | | |
| 3c | PTO-00119 | PTO SHEAR BOLT CLUTCH-HEADER | | | | | |
| 3d | PTO-00093WE | PTO GUARD ASSY (BLACK) | | | | | |
| OR | PTO-00093 | PTO GUARD ASSY (YELLOW) | | | | | |
| 3e | PTO-00968 | EASY LOCK GUARD CLIPS (RED) | | | | | |
| 3g | BLTA10384 | SHEARBOLT | | | | | |
| 3h | NUT-0265 | NYLOC NUT | | | | | |
| 4 | 192768 18 | SPROCKET | 1 | | | | |
| 5 | CHN-01991 | CHAIN (99 LINKS PLUS JOINER) | 1 | | | | |
| 5a | CHN-01901 | JOINING LINK | | | | | |
| 6 | CHN-01910 | HALF LINK | A/R | | | | |
| 7 | KIT-00931 | PTO SUPPORT KIT | 1 | | | | |



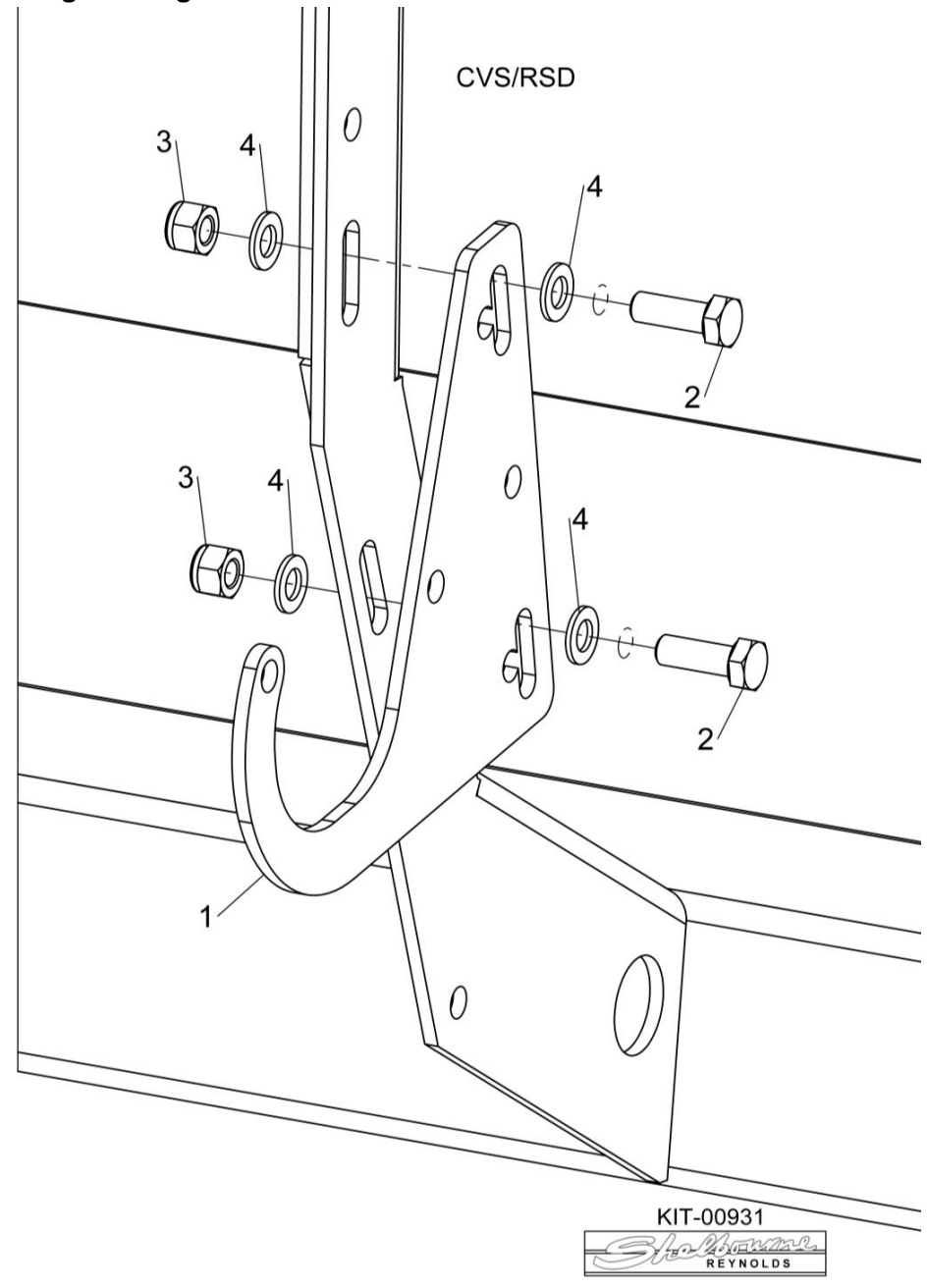
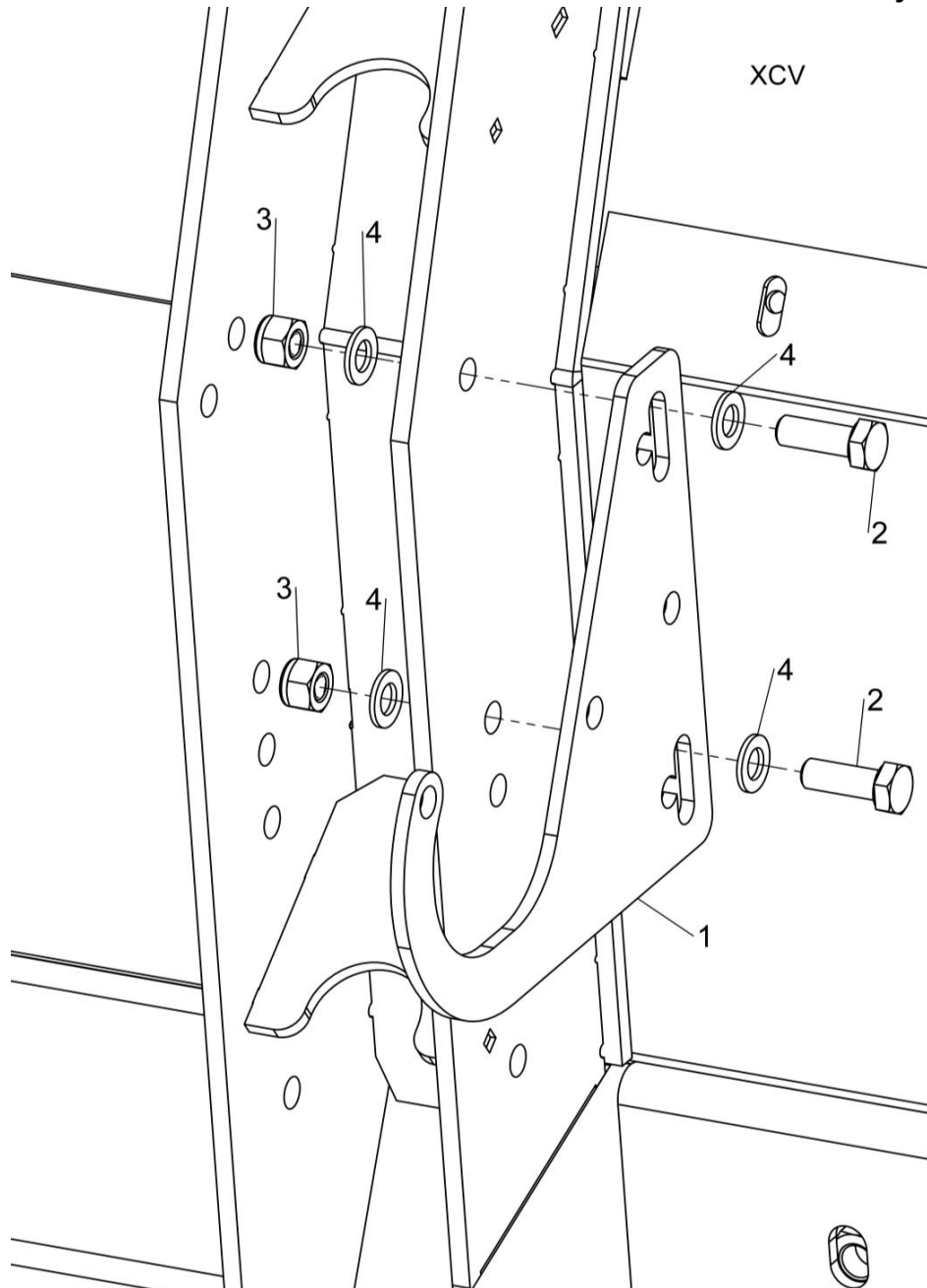
Shelbourne Reynolds Engineering Limited

| ASSY NUMBER: 196549 178 | | | | ASSY DESCRIPTION: DRIVE KIT JD CVS/RVS/RSD/Excel (22'-42') | | | |
|-------------------------|-------------|------------------------------|-----|--|---------|-------------|-----|
| ITEM | PART NO | DESCRIPTION | QTY | ITEM | PART NO | DESCRIPTION | QTY |
| 1A | 192592 06 | INPUT GEAR (47t) | 1 | | | | |
| | | WITH ROTOR GEARBOX | | | | | |
| 1B/E | 192592 09 | INPUT GEAR (37t) | 1 | | | | |
| | | WITHOUT ROTOR GEARBOX | | | | | |
| 2A | 193599 06 | PINION (22t) | 1 | | | | |
| | | WITH ROTOR GEARBOX | | | | | |
| 2B | 193599 09 | PINION (32t) | 1 | | | | |
| | | WITHOUT ROTOR GEARBOX | | | | | |
| 2E | 198999 09 | PINION (32t) | 1 | | | | |
| | | GEARBOX WITH 65mm SHAFT | | | | | |
| 3 | PTO-26001WE | PTO | 1 | | | | |
| 3a | PTO-00082WE | PTO YOKE-COMBINE (COLLAR) | | | | | |
| OR | PTO-00082 | PTO YOKE-COMBINE (PUSH PIN) | | | | | |
| 3b | PTO-00083 | PTO CROSS BEARING | | | | | |
| 3c | PTO-00119 | PTO SHEAR BOLT CLUTCH-HEADER | | | | | |
| 3d | PTO-00093WE | PTO GUARD ASSY (BLACK) | | | | | |
| OR | PTO-00093 | PTO GUARD ASSY (YELLOW) | | | | | |
| 3e | PTO-00968 | EASY LOCK GUARD CLIPS (RED) | | | | | |
| 3g | BLTA10384 | SHEARBOLT | | | | | |
| 3h | NUT-0265 | NYLOC NUT | | | | | |
| 4 | 192768 18 | SPROCKET | 1 | | | | |
| 5 | CHN-01991 | CHAIN (99 LINKS PLUS JOINER) | 1 | | | | |
| 5a | CHN-01901 | JOINING LINK | | | | | |
| 6 | CHN-01910 | HALF LINK | A/R | | | | |
| 7 | KIT-00931 | PTO SUPPORT KIT | 1 | | | | |



Shelbourne Reynolds Engineering Limited

| ASSY NUMBER: KIT-00931 | | | | ASSY DESCRIPTION: PTO SUPPORT KIT | | | |
|------------------------|-----------|--------------|-----|-----------------------------------|---------|-------------|-----|
| ITEM | PART NO | DESCRIPTION | QTY | ITEM | PART NO | DESCRIPTION | QTY |
| 1 | 191945 01 | PTO SUPPORT | 1 | | | | |
| 2 | HSS-0241 | SETSCREW | 2 | | | | |
| 3 | NUT-0269 | NYLOC NUT | 2 | | | | |
| 4 | WSH-0018 | PLAIN WASHER | 4 | | | | |

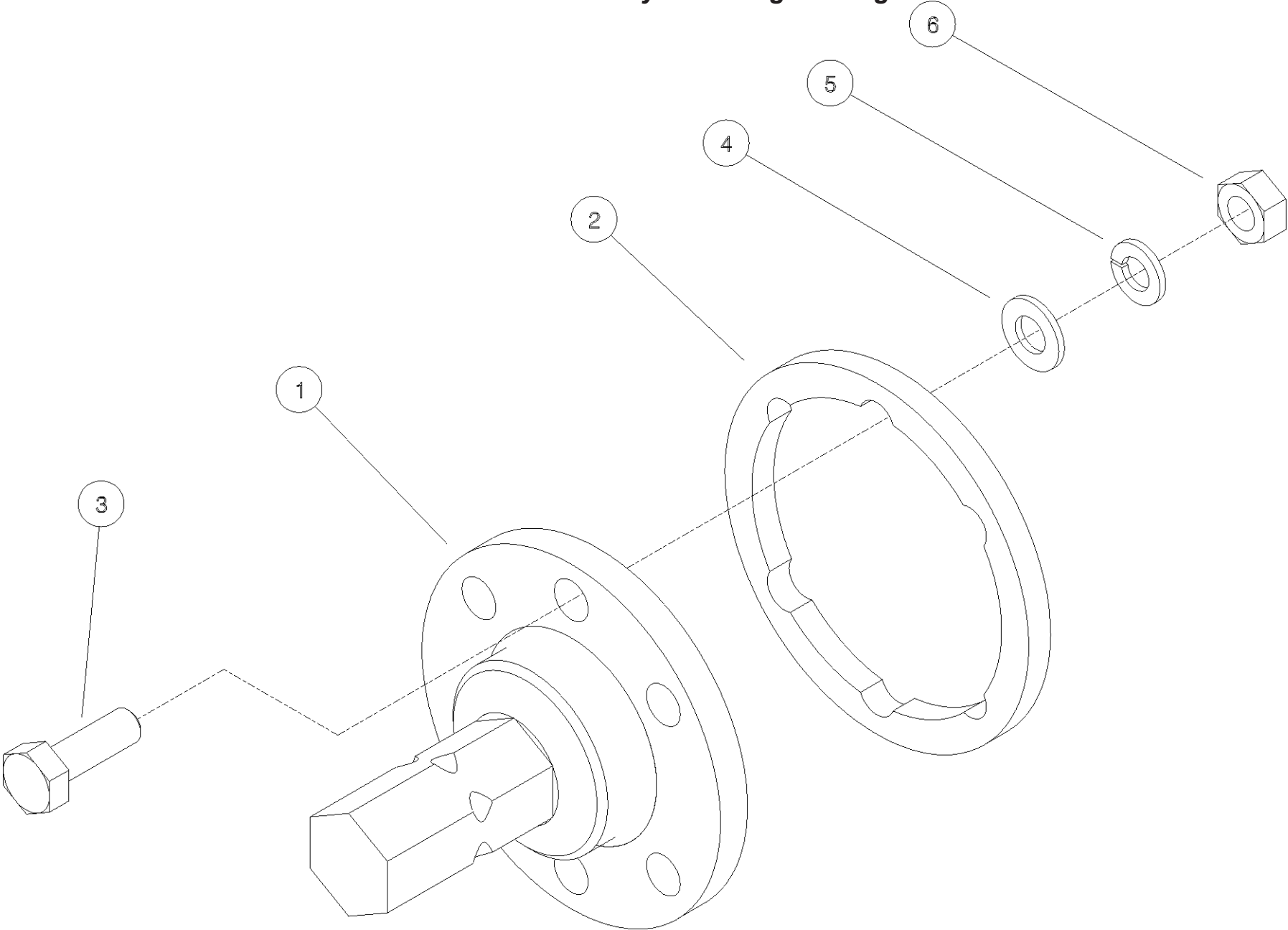


KIT-00931

Shelbourne
REYNOLDS

Shelbourne Reynolds Engineering Limited

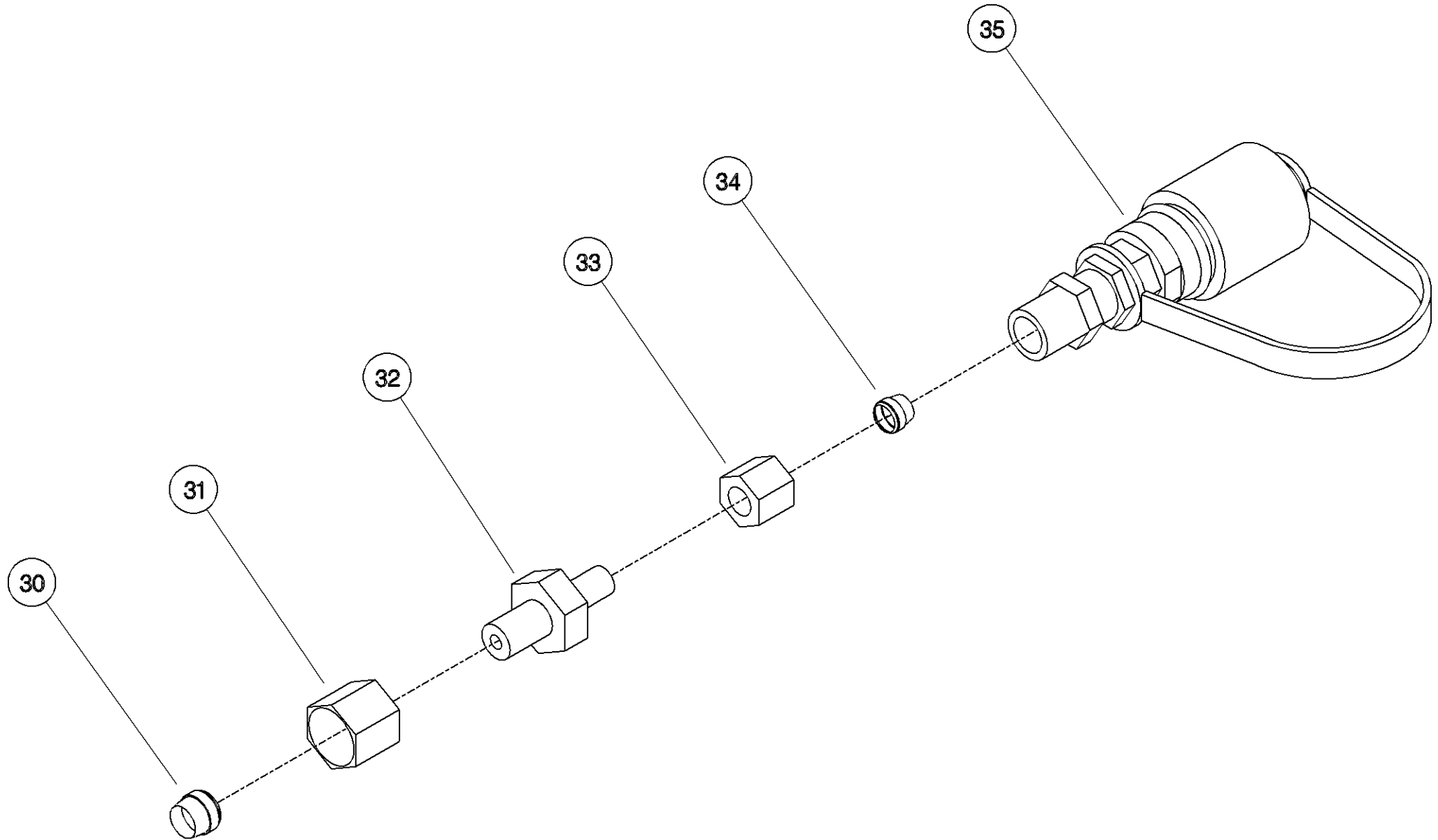
[illegible]



HYDRAULIC KITS

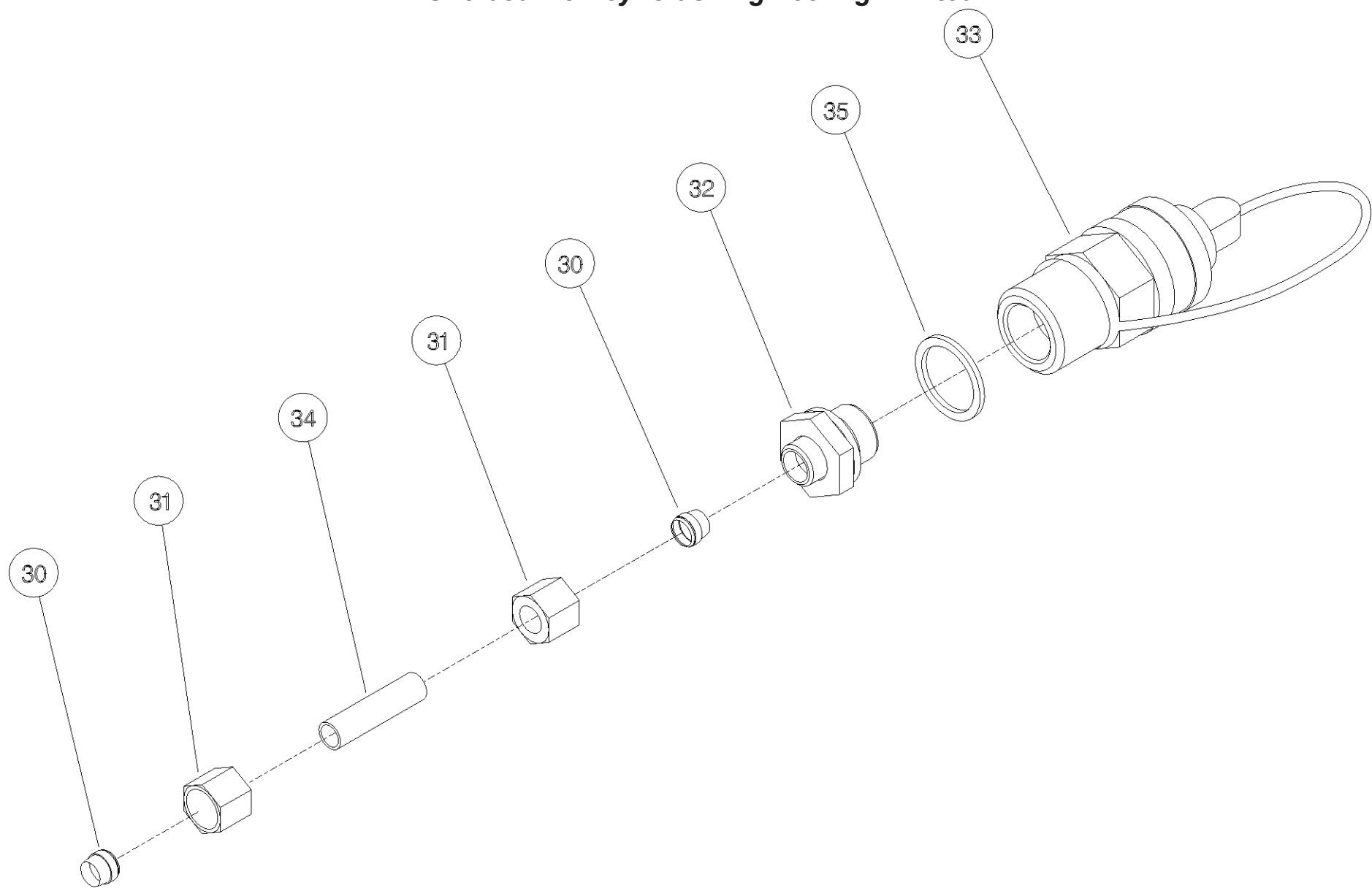
Shelbourne Reynolds Engineering Limited

| ASSY NUMBER: KIT-01702 | | | | ASSY DESCRIPTION: HYDRAULIC PROBE ADAPTOR | | | |
|------------------------|-----------|-------------------|-----|---|---------|-------------|-----|
| ITEM | PART NO | DESCRIPTION | QTY | ITEM | PART NO | DESCRIPTION | QTY |
| 1 | | | | 41 | | | |
| 2 | | | | 42 | | | |
| 3 | | | | 43 | | | |
| 4 | | | | 44 | | | |
| 5 | | | | 45 | | | |
| 6 | | | | 47 | | | |
| 7 | | | | 48 | | | |
| 8 | | | | 49 | | | |
| 9 | | | | 50 | | | |
| 10 | | | | 51 | | | |
| 11 | | | | 52 | | | |
| 12 | | | | 53 | | | |
| 13 | | | | 54 | | | |
| 14 | | | | 55 | | | |
| 15 | | | | 56 | | | |
| 16 | | | | 57 | | | |
| 17 | | | | 58 | | | |
| 18 | | | | 59 | | | |
| 19 | | | | 60 | | | |
| 20 | | | | 61 | | | |
| 21 | | | | 62 | | | |
| 22 | | | | 63 | | | |
| 23 | | | | 64 | | | |
| 24 | | | | 65 | | | |
| 25 | | | | 66 | | | |
| 26 | | | | 67 | | | |
| 27 | | | | 68 | | | |
| 29 | | | | 69 | | | |
| 30 | FIT-0056 | OLIVE | 1 | 70 | | | |
| 31 | FIT-0051 | NUT | 1 | 71 | | | |
| 32 | 190860 01 | HYDRAULIC FITTING | | 72 | | | |
| | | | | 73 | | | |
| 33 | FIT-0050 | NUT | | 74 | | | |
| 34 | FIT-0055 | OLIVE | 1 | 75 | | | |
| 35 | COU-0123 | COUPLING | 1 | 76 | | | |
| 36 | | | | 77 | | | |
| 37 | | | | 78 | | | |
| 38 | | | | 79 | | | |
| 39 | | | | 80 | | | |
| 40 | | | | 81 | | | |



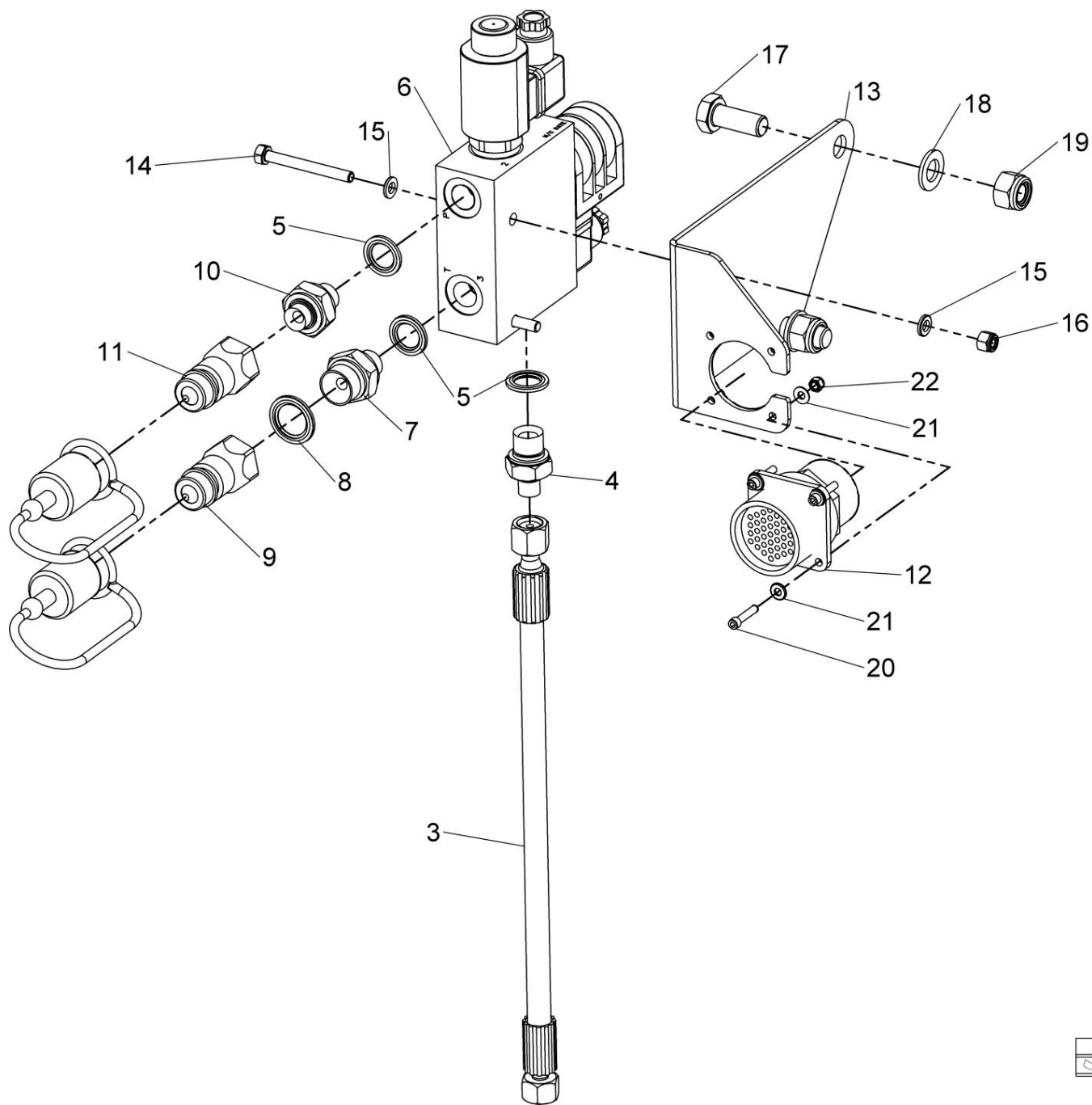
Shelbourne Reynolds Engineering Limited

| ASSY NUMBER: KIT-01707 | | | | ASSY DESCRIPTION: HYDRAULIC PROBE ADAPTOR | | | |
|------------------------|-----------|--|-----|---|---------|-------------|-----|
| ITEM | PART NO | DESCRIPTION | QTY | ITEM | PART NO | DESCRIPTION | QTY |
| 1 | | | | | | | |
| 2 | | | | | | | |
| 3 | | | | | | | |
| 4 | | | | | | | |
| 5 | | | | | | | |
| 6 | | | | | | | |
| 7 | | | | | | | |
| 8 | | | | | | | |
| 9 | | | | | | | |
| 10 | | | | | | | |
| 11 | | | | | | | |
| 12 | | | | | | | |
| 13 | | | | | | | |
| 14 | | | | | | | |
| 15 | | | | | | | |
| 16 | | | | | | | |
| 17 | | | | | | | |
| 18 | | | | | | | |
| 19 | | | | | | | |
| 20 | | | | | | | |
| 21 | | | | | | | |
| 22 | | | | | | | |
| 23 | | | | | | | |
| 24 | | | | | | | |
| 25 | | | | | | | |
| 26 | | | | | | | |
| 27 | | | | | | | |
| 29 | | | | | | | |
| 30 | FIT-0056 | OLIVE | 2 | | | | |
| 31 | FIT-0051 | NUT | 2 | | | | |
| 32 | FIT-0046 | COUPLING | 1 | | | | |
| 33 | COU-0128 | PULL BRAKE COUPLING (1/2" BSP | 1 | | | | |
| 34 | RP-100040 | PIPE | | | | | |
| 35 | WSH-1015 | DOWTY WASHER (NOT REQUIRED IF ADAPTOR HAS SEAL FITTED) | A/R | | | | |



Shelbourne Reynolds Engineering Limited

| ASSY NUMBER: KIT-01714 | | | | ASSY DESCRIPTION: HYDRAULIC FITTING KIT (Z SERIES JD) | | | |
|------------------------|-----------|--------------------------|-----|---|---------|-------------|-----|
| ITEM | PART NO | DESCRIPTION | QTY | ITEM | PART NO | DESCRIPTION | QTY |
| 1 | FIT-0056 | OLIVE (UPTO 2018) | 2 | | | | |
| 2 | FIT-0051 | NUT (UPTO 2018) | 2 | | | | |
| 3 | HHAC07910 | HOSE (2018 & ON) | 1 | | | | |
| OR | HHAC07505 | HOSE (UPTO 2018) | 1 | | | | |
| 4 | FIT-0025 | FITTING | 1 | | | | |
| OR | HAQAA0305 | STRAINER FITTING | 1 | | | | |
| 5 | WSH-1010 | DOWTY WASHER | 3 | | | | |
| 6 | HVB-12506 | VALVE BLOCK (2018 & ON) | 1 | | | | |
| OR | HVB-12504 | VALVE BLOCK (2002-2017) | 1 | | | | |
| OR | HVB-12501 | VALVE BLOCK (UP TO 2002) | 1 | | | | |
| 7 | HMA-0065 | FITTING | 1 | | | | |
| 8 | WSH-1015 | DOWTY WASHER | 1 | | | | |
| 9 | COU-0162 | PULLBRAKE COUPLING | 1 | | | | |
| 10 | HAAAD0545 | FITTING | 1 | | | | |
| 11 | COU-0550 | PULLBRAKE COUPLING | 1 | | | | |
| 12 | 192148 01 | WIRING LOOM & PLUG ASSY. | 1 | | | | |
| 13 | 192149 01 | MOUNTING BRACKET | 1 | | | | |
| 14 | BLT-2095 | BOLT | 2 | | | | |
| 15 | WSH-0009 | PLAIN WASHER | 4 | | | | |
| 16 | NUT-0260 | NYLOC NUT | 2 | | | | |
| 17 | HSS-0238 | SOC.HD.BUTTON SCREW | 2 | | | | |
| 18 | WSH-0012 | PLAIN WASHER | 2 | | | | |
| 19 | NUT-0269 | NYLOC NUT | 2 | | | | |
| 20 | SCW-0035 | CAP HD.SCREW | 4 | | | | |
| 21 | WSH-0003 | PLAIN WASHER | 8 | | | | |
| 22 | NUT-0255 | NYLOC NUT | 4 | | | | |
| 23 | FIT-0047 | FITTING | 1 | | | | |
| 24 | RP100040 | PIPE (UPTO 2018) | 1 | | | | |

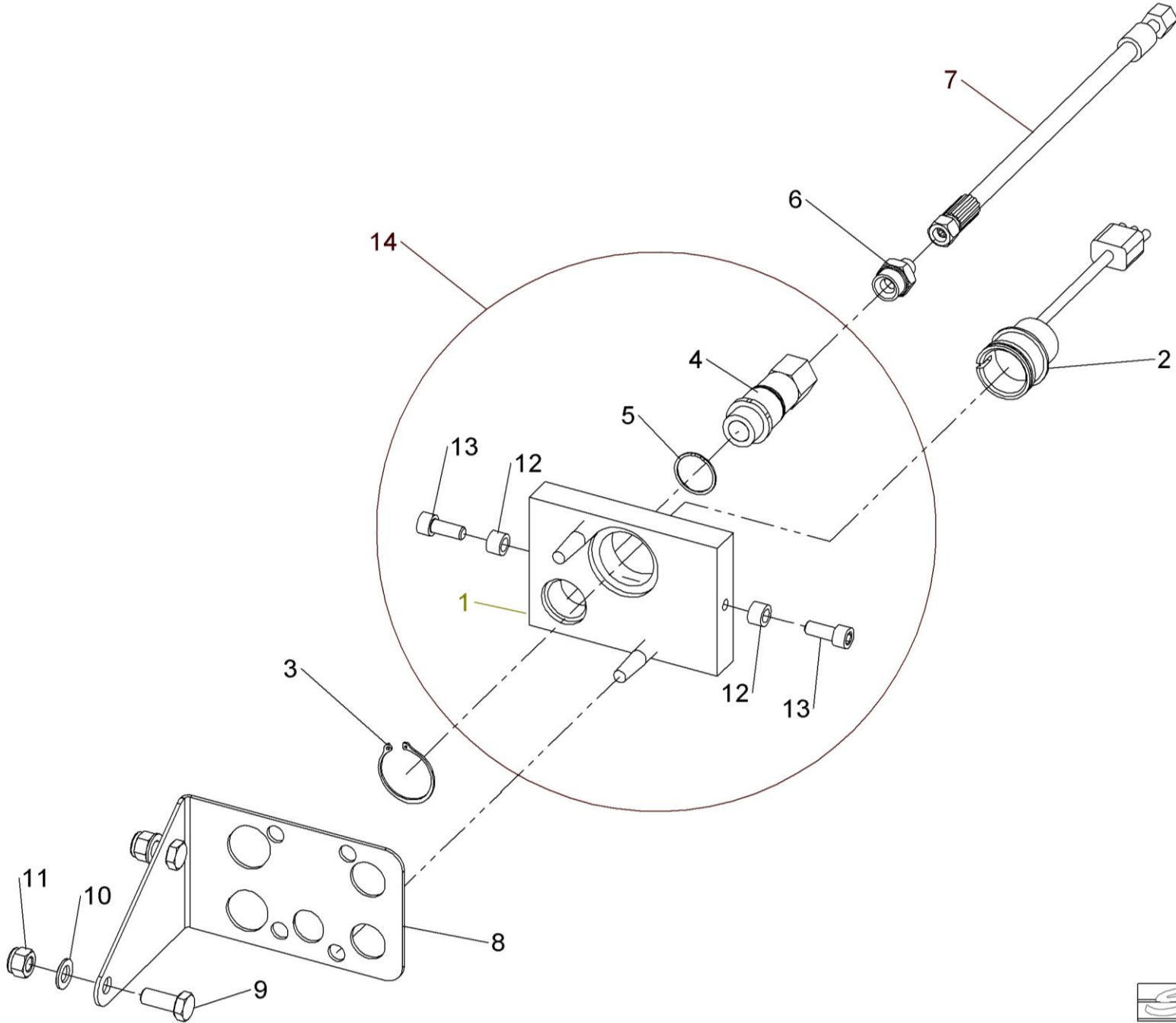


KIT-01714



Shelbourne Reynolds Engineering Limited

| ASSY NUMBER: KIT-01727 | | | | ASSY DESCRIPTION: JOHN DEERE HYD MULTICOUPLER KIT | | | |
|------------------------|-----------|---|-----|---|---------|-------------|-----|
| ITEM | PART NO | DESCRIPTION | QTY | ITEM | PART NO | DESCRIPTION | QTY |
| 1 | 197145 01 | ELEC/HYD COUPLER PLT (1 HOLE) | 1 | | | | |
| 2 | 197146 01 | LOOM & PLUG ASSY JD MULTI | 1 | | | | |
| 3 | CIR-0450 | EXTERNAL CIRCLIP | 1 | | | | |
| 4 | HQR-13027 | COUPLER (FLAT FACE) | 1 | | | | |
| 4a | VSK-00120 | SEAL KIT FOR HQR-13027 | A/R | | | | |
| 5 | CLP-00230 | SNAP RING | 1 | | | | |
| 6 | HMA-0114 | HYD ADAPT | 1 | | | | |
| 7 | HHAC12010 | HYD HOSE ASSY | 1 | | | | |
| 8 | 197766 01 | PARKING BRACKET | 1 | | | | |
| 9 | HSS-0238 | BOLT | 2 | | | | |
| 10 | WSH-0018 | PLAIN WASHER | 2 | | | | |
| 11 | NUT-0269 | NYLOC NUT | 2 | | | | |
| 12 | 197248 01 | LOCATING BOSS (UPTO MID 2014) | 2 | | | | |
| 13 | SCW-0190 | SOC HD SCREW (UPTO MID 2014) | 2 | | | | |
| 14 | HQR-93000 | JD MULTICOUPLER ASSY (ITEMS 1,4,5,12&13) | 1 | | | | |

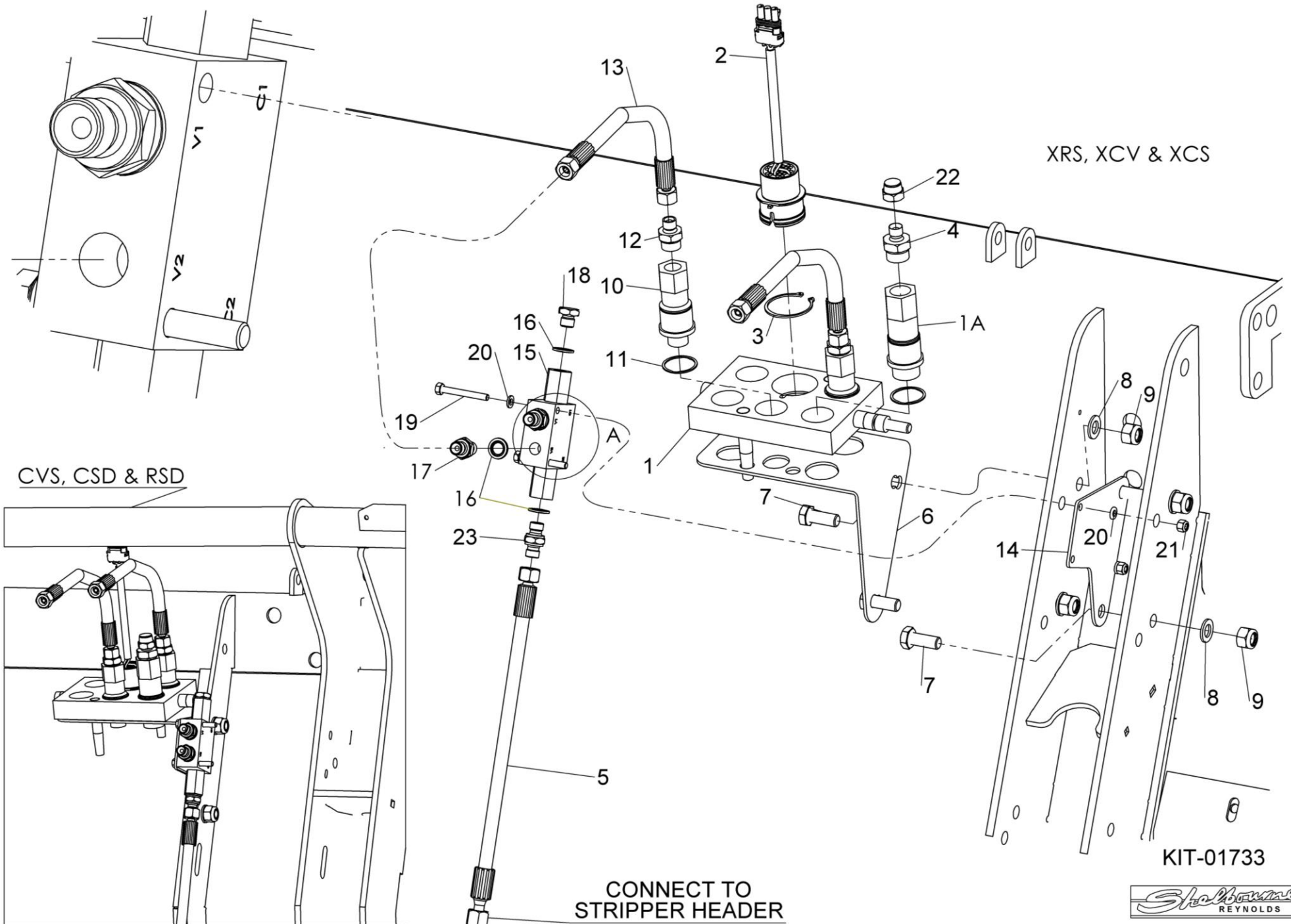


KIT-01727



Shelbourne Reynolds Engineering Limited

| ASSY NUMBER: KIT-01733 | | | | ASSY DESCRIPTION: JD S SERIES VARIABLE FEEDER HYD KIT | | | |
|------------------------|------------|-----------------------------------|-----|---|---------|-------------------------------------|-----|
| ITEM | PART NO | DESCRIPTION | QTY | ITEM | PART NO | DESCRIPTION | QTY |
| 1 | HQR-93000 | JD MULTICOUPLER ASSY (PARKER) | 1 | | | | |
| 1a | HQR-13027 | COUPLER (UP TO 2022) | | | | ITEM 2 ELECTRIC PLUG, CONNECT | |
| OR | HQR-93000X | JD MULTICOUPLER PLATE (FASTER) | 1 | | | WHITE (4) & YELLOW (28) = CORN HEAD | |
| 2 | 291794 01 | JD LOOM & PLUG (CORN HEAD) | 1 | | | | |
| OR | 197146 01 | JD LOOM & PLUG (RIGID HEADER) | 1 | | | (REF. WHITE (4) & GREEN (16)= RIGID | |
| OR | - | LOOM & PLUG NOT REQUIRED ON JD X9 | | | | HEADER) | |
| 3 | CIR-0450 | EXT CIRCLIP | 1 | | | | |
| 4 | HMA-0114 | HYD ADAPT (UPTO 2022) | 1 | | | REMOVE EXTRA COUPLER 1a (REEL | |
| 5 | HHAC07910 | HYD HOSE | 1 | | | RAISE/LOWER) FROM ITEM 1 | |
| 6 | 197766 01 | PARKING BRACKET | 1 | | | | |
| 7 | HSS-0238 | SET SCREW | 4 | | | | |
| 8 | WSH-0018 | PLAIN WASHER | 8 | | | | |
| 9 | NUT-0269 | NYLOC NUT | 4 | | | FOR JD X9 USE KIT-01733B, DOES NOT | |
| 10 | HQR-13026 | COUPLER (PARKER) | 2 | | | INCLUDE ITEMS 2 & 3 | |
| OR | HQR-13026A | COUPLER (FASTER) INC CIRCLIP | 2 | | | | |
| 11 | CLP-00230 | SNAP RING (PARKER) | 2 | | | FOR JD X9 ALSO SUPPLY KIT-01737, | |
| 12 | HAAAK0327 | HYD ADAPT | 2 | | | HYDRAULIC LOOM KIT | |
| 13 | HHAC12005 | HYD HOSE | 1 | | | | |
| 14 | 291792 01 | VALVE MOUNTING PLATE | 1 | | | | |
| 15 | HVB-27000 | PO CHECK VALVE | 4 | | | | |
| 16 | WSH-1005 | DOWTY WASHER | 2 | | | | |
| 17 | HMA-0052 | HYD ADAPT | 1 | | | | |
| 18 | FITC00303 | BLANKING PLUG | 2 | | | | |
| 19 | BLTA06320 | BOLT | 2 | | | | |
| 20 | WSH-0009 | PLAIN WASHER | 2 | | | | |
| 21 | NUT-0260 | NYLOC NUT | 1 | | | | |
| 22 | FITC00403 | BLANKING CAP (UPTO 2022) | 1 | | | | |
| 23 | HAPAA0302 | HYD RESTRICTOR | 1 | | | | |



Shelbourne Reynolds Engineering Limited

| ASSY NUMBER: KIT-01737 | | | | ASSY DESCRIPTION: JD X9 HYD LOOM KIT | | | |
|------------------------|-----------|-------------------------------|-------|--------------------------------------|---------|-------------|-----|
| ITEM | PART NO | DESCRIPTION | QTY | ITEM | PART NO | DESCRIPTION | QTY |
| 1 | 292995 01 | JD X9 HYD LOOM | 1 | | | | |
| 1a | FUS-0022 | FUSE | 1 | | | | |
| 1b | SWT-00520 | SWITCH | 1 | | | | |
| 1c | DIO-01005 | LOOM CAP | 2 | | | | |
| 2 | BLT-4710 | COACH BOLT | 2 | | | | |
| 3 | 292986 01 | SWITCH PLATE | 1 | | | | |
| 4 | NUT-0263 | NYLOC NUT | 2 | | | | |
| 5 | WSH-0012 | PLAIN WASHER | 2 | | | | |
| 6 | EDS-11400 | PVC EDGING STRIP | 0.06m | | | | |
| 7 | 293081 01 | CROP DEFLECTOR SWITCH STICKER | 1 | | | | |

