

NEW HOLLAND

DRIVE AND ADAPTOR PLATE PARTS MANUAL



STRIPPER HEADER

Shelbourne Reynolds Engineering Ltd
Stanton
Bury St Edmunds
Suffolk
IP31 2AR
England

Telephone: 01359 250415
Fax: 01359 250464

Stores Direct : 01359 251231
Stores Direct: 01359 252031

Shelbourne Reynolds Inc.
Colby PO box 607
1250 S Country Club Drive
Colby , Kansas 67701
U.S.A.

Telephone: (785) 462 6299
Fax: (785) 462 6761

Issue 15

28/01/2022

ORDERING SPARE PARTS

IMPORTANT

Your Stripper Header is made up of a Machine assembly number (common parts), specific sub assemblies and also customer optional build kits. The machine, sub assemblies and optional kit numbers are listed in the front pages of your Operators manual. If you do not have these numbers please contact Shelbourne Reynolds Parts Department direct on (telephone) Stanton - (01359) 251231 or Colby - (785) 462 6299.

To ensure that you order the correct part from your SRE dealer please use the following procedure.

ALWAYS QUOTE THE MACHINE AND SERIAL NUMBERS WHEN ORDERING.

The year and/or serial number of the machine may determine the correct sub assembly.

Refer to the Parts Manuals front page/s, listing the machine assemblies. Select the correct machine assembly number which is printed in the top left corner of the page (starting with 1965_ _ 01), This machine number can also be taken from the Stripper Header identification plate located on the rear left hand corner of the machine.

On this page you will find the parts listing for the common parts for every configuration of that machine assembly number. You will find the corresponding drawing by either looking at the facing page or progressing through the manual to the next drawing. The drawings indicate the components by item numbers, which you will find, are repeated in the left-hand side of your parts listing, and therefore referring to the correct part.

Note all parts will not be found listed below the machine number. Other parts will be from specific sub assemblies and optional kits. These sub assemblies and kits will be found in numerical order further through the manual. Sub assemblies start with 1960_ _ 01 and kits start with KIT- 19 _ _ _.

The parts listing for adaptor plates, drive kits and hydraulic couplings can be found in the following manuals;

Drive & Adaptor Plate Manuals

Massey Ferguson	MAN-03172
Claas/Cat	MAN-03173
John Deere	MAN-03174
New Holland	MAN-03175
Laverda	MAN-03176
Gleaner/Challenger	MAN-03177
Case IH	MAN-03178

List Of Kit Numbers

Adaptor Plate 5

196555 06	Adaptor Plate Assembly New Holland (ERPN)	6
196555 07	Adaptor Plate Assembly New Holland (USA)	7
196555 12	Adaptor Plate New Holland CX/CR	8
KIT-00632	Adaptor Plate Assembly New Holland 2004 TX/CT Models	9
KIT-00633	Adaptor Plate New Holland	10
KIT-00639	Adaptor Plate New Holland CX	12
KIT-00803	New Holland TR Bottom Pick Up Fixing Kit	14
KIT-00811	Fill In Plate New Holland 2004 CT/TX Models	16

Drive Options 19

196549 025	Drive Kit New Holland CVS/RVS/RSD (18ft)	20
196549 026	Drive kit New Holland ERPN PTO CVS/RVS (20ft)	22
196549 028	Drive Kit New Holland ERPN PTO CVS/RVS (22-32ft)	24
196549 075	Drive Kit New Holland ERPN SQ Drive CVS/RVS (18ft)	26
196549 076	Drive Kit New Holland ERPN SQ Drive (20ft)	28
196549 078	Drive Kit New Holland ERPN Sq Drive CVS/RVS (22-32ft)	30
196549 125	Drive Kit New Holland CVS/RVS/RSD (18ft)	32
196549 126	Drive Kit New Holland CVS/RVS/RSD (20ft)	34
196549 128	Drive Kit New Holland CVS/RVS/RSD/XCV (22-32ft)	36
KIT-00931	PTO Support Kit	38
KIT-00312	Bearing Box Assembly New Holland Sq Drive	40

Hydraulic Kits 43

KIT-01702	Hydraulic Probe Adaptor	44
KIT-01710	Hydraulic Fitting Kit	46
KIT-01725	Hydraulic Kit New Holland CR	48
KIT-01726	Hydraulic Multicoupler Kit	50

ADAPTOR PLATES

Shelbourne Reynolds Engineering Limited

ASSY NUMBER: 196555 06				ASSY DESCRIPTION: ADAPTOR PLATE ASSY NH (ERP)			
ITEM	PART NO	DESCRIPTION	QTY	ITEM	PART NO	DESCRIPTION	QTY
1	KIT-00633	ADAPTOR PLATE SUB	1				

Shelbourne Reynolds Engineering Limited

ASSY NUMBER: 196555 07				ASSY DESCRIPTION: ADAPTOR PLATE ASSY NH (USA)			
ITEM	PART NO	DESCRIPTION	QTY	ITEM	PART NO	DESCRIPTION	QTY
1	KIT-00633	ADAPTOR PLATE SUB	1				
2	KIT-00803	FIXING KIT	1				

Shelbourne Reynolds Engineering Limited

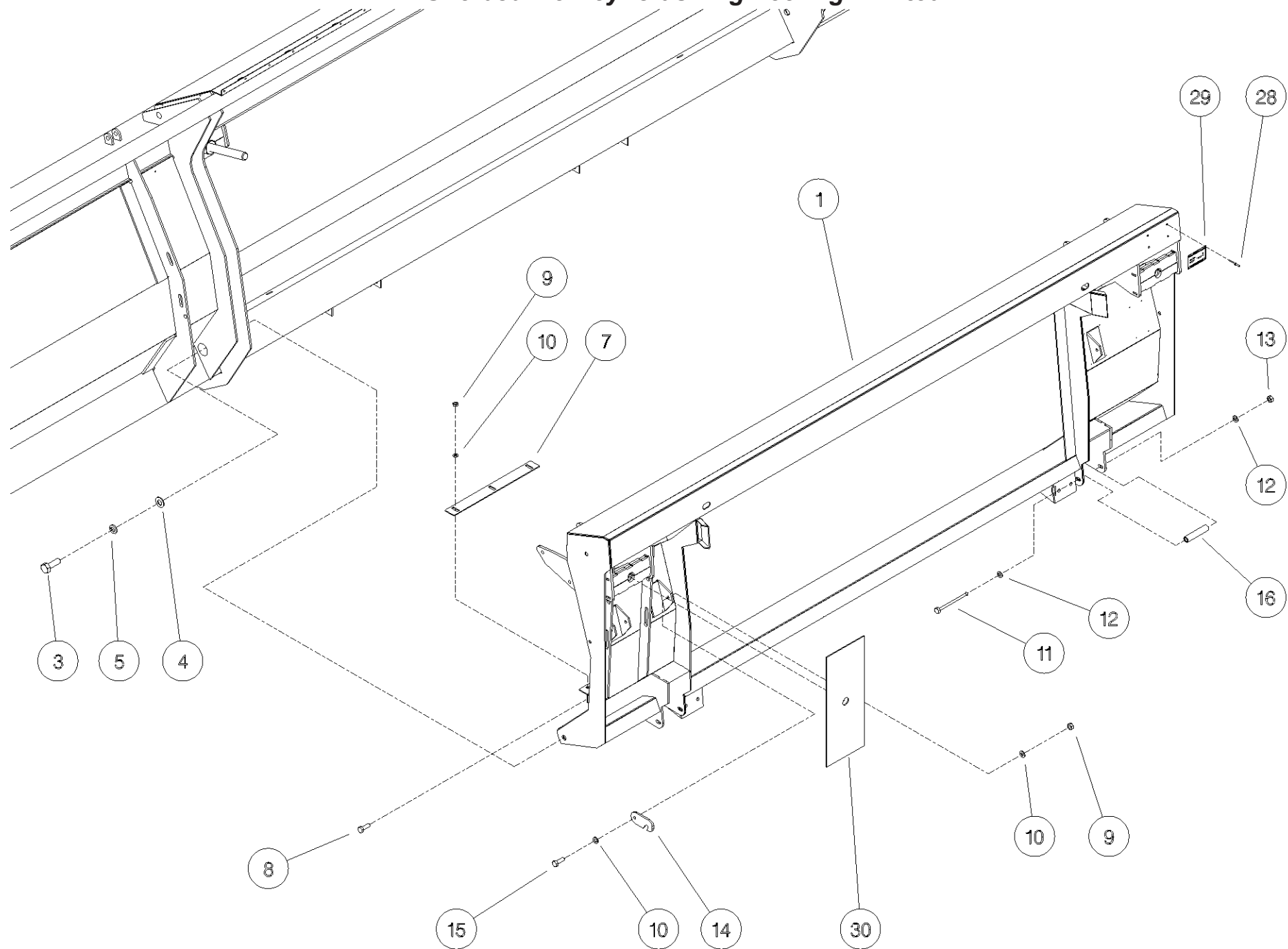
ASSY NUMBER: 196555 12				ASSY DESCRIPTION: ADAPTOR PLATE ASSY NEW HOLLAND CX/CR			
ITEM	PART NO	DESCRIPTION	QTY	ITEM	PART NO	DESCRIPTION	QTY
1	KIT-00639	ADAPTOR PLATE SUB	1				

Shelbourne Reynolds Engineering Limited

ASSY NUMBER: 196555 14				ASSY DESCRIPTION: ADPTR PLT ASSY NH 2004 TX/CT MODELS			
ITEM	PART NO	DESCRIPTION	QTY	ITEM	PART NO	DESCRIPTION	QTY
1	KIT-00639	ADAPTOR PLATE SUB	1				
2	KIT-00811	FILL IN PLATE ASSY	1				

Shelbourne Reynolds Engineering Limited

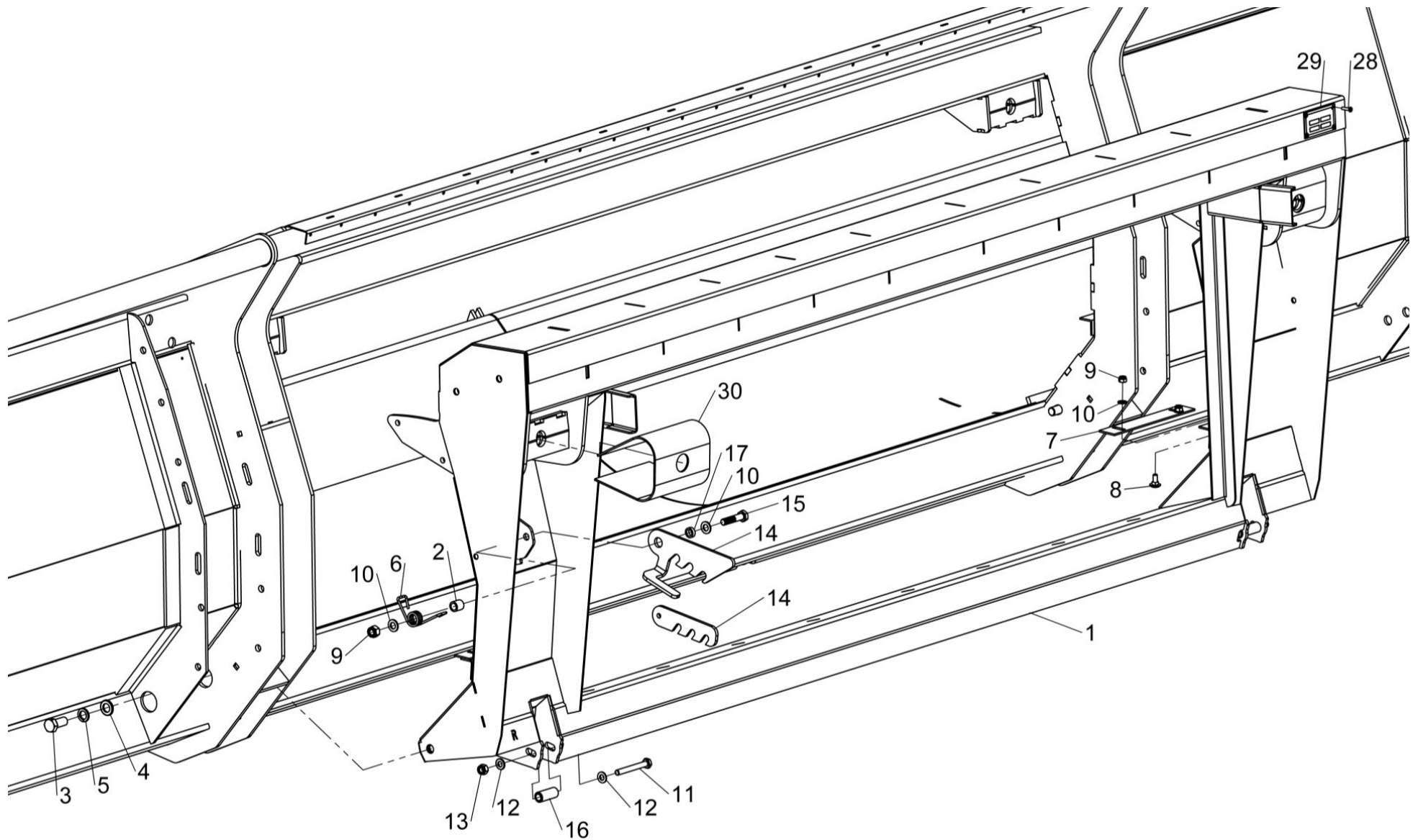
ASSY NUMBER: KIT-00633				ASSY DESCRIPTION: ADAPTOR PLATE NEW HOLLAND			
ITEM	PART NO	DESCRIPTION	QTY	ITEM	PART NO	DESCRIPTION	QTY
1	194311 01	FRAME WELD ASSY	1				
2							
3	HSS-0315	SET SCREW	2				
4	WSH-0024	PLAIN WASHER	2				
5	WSH-0070	SPRING WASHER	2				
6							
7	194308 02	SCRAPER (UPTO 2009)	2				
8	BLT-4710	COACH BOLT (UPTO 2009)	6				
9	NUT-0263	NYLOC NUT (2009 & ON)	2				
OR	NUT-0263	NYLOC NUT (UPTO 2009)	8				
10	WSH-0012	PLAIN WASHER (2009 & ON)	4				
OR	WSH-0012	PLAIN WASHER (UPTO 2009)	10				
11	BLTA10620	BOLT	2				
12	WSH-0015	PLAIN WASHER	4				
13	NUT-0265	NYLOC NUT	2				
14	130111 01	RETAINING LUG	2				
15	HSS-0150	SET SCREW	2				
16	194312 01	TUBE	2				
17							
18							
19							
20							
21							
22							
23							
24							
25							
26							
27							
28	POP-0006	POP RIVET (UPTO 2009)	4				
29	134024 05	IDENTIFICATION PLT (UPTO 2009)	1				
30	195093 01	DUST COVER	2				



KIT - 00633

Shelbourne Reynolds Engineering Limited

ASSY NUMBER: KIT-00639				ASSY DESCRIPTION: ADAPTOR PLATE NEW HOLLAND CX			
ITEM	PART NO	DESCRIPTION	QTY	ITEM	PART NO	DESCRIPTION	QTY
1	195530 01	NH ADAPTOR PLATE ASSY	1				
2	198811 02	SPACER TUBE (2011 AND ON)	1				
3	HSS-0315	SET SCREW	2				
4	WSH-0024	PLAIN WASHER	2				
5	WSH-0070	SPRING WASHER	2				
6	198807 01	TORSION SPRING (2011 ON)	1				
7	194239 02	SCRAPER (UPTO 2009)	2				
8	BLT-4710	COACH BOLT (M8x20(UPTO 2009)	4				
9	NUT-0269	NYLOC NUT (2011 ON)	1				
OR	NUT-0263	NYLOC NUT (2009-2010	1				
OR	NUT-0263	NYLOC NUT(M8) (UPTO 2009)	5				
10	WSH-0018	PLAIN WASHER (2001 ON)	2				
OR	WSH-0012	PLAIN WASHER (2009-2010)	2				
OR	WSH-0012	PLAIN WASHER (UPTO 2009)	6				
11	BLTA10520	HEX.HEAD BOLT	2				
12	WSH-0015	PLAIN WASHER	4				
13	NUT-0265	NYLOC NUT	2				
14	198802 01	LOCKING PLATE (2011 ON)	1				
OR	130111 01	RETAINING LUG (UPTO 2011)	1				
15	BLTA12350	HEX.HEAD BOLT(2011 ON)	1				
OR	HSS-0150	SET SCREW (UPTO 2011)	1				
16	194312 02	TUBE	2				
17	198789 01	SPACER TUBE (2011 ON)	1				
18							
19							
20							
21							
22							
23							
24							
25							
26							
27							
28	POP-0006	POP RIVET (UPTO 2009)	4				
29	134024 05	SERIAL NO PLATE (UPTO 2009)	1				
30	195093 01	ADAPT.PLT.DUST COVER	2				

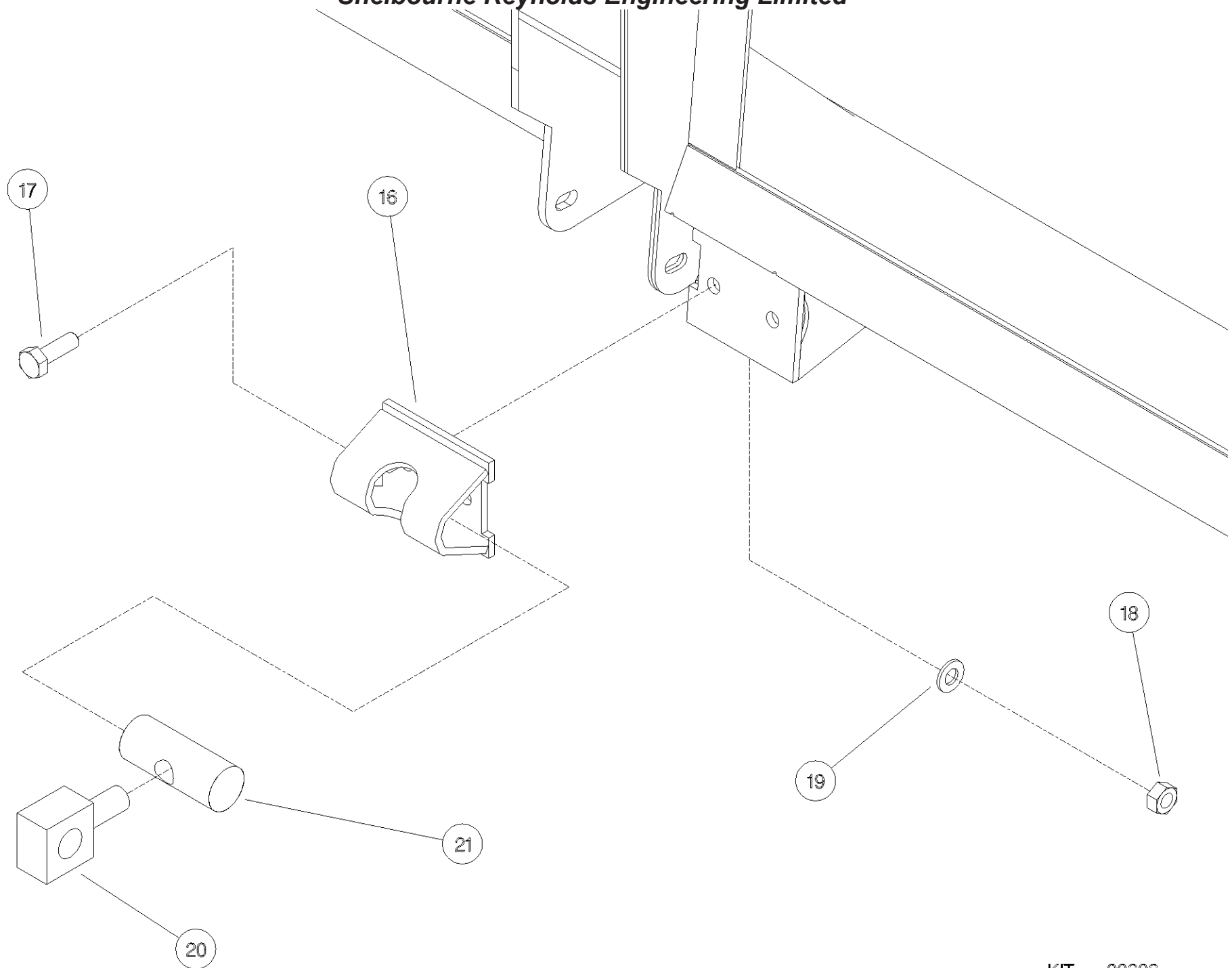


KIT-00639
KIT-00640



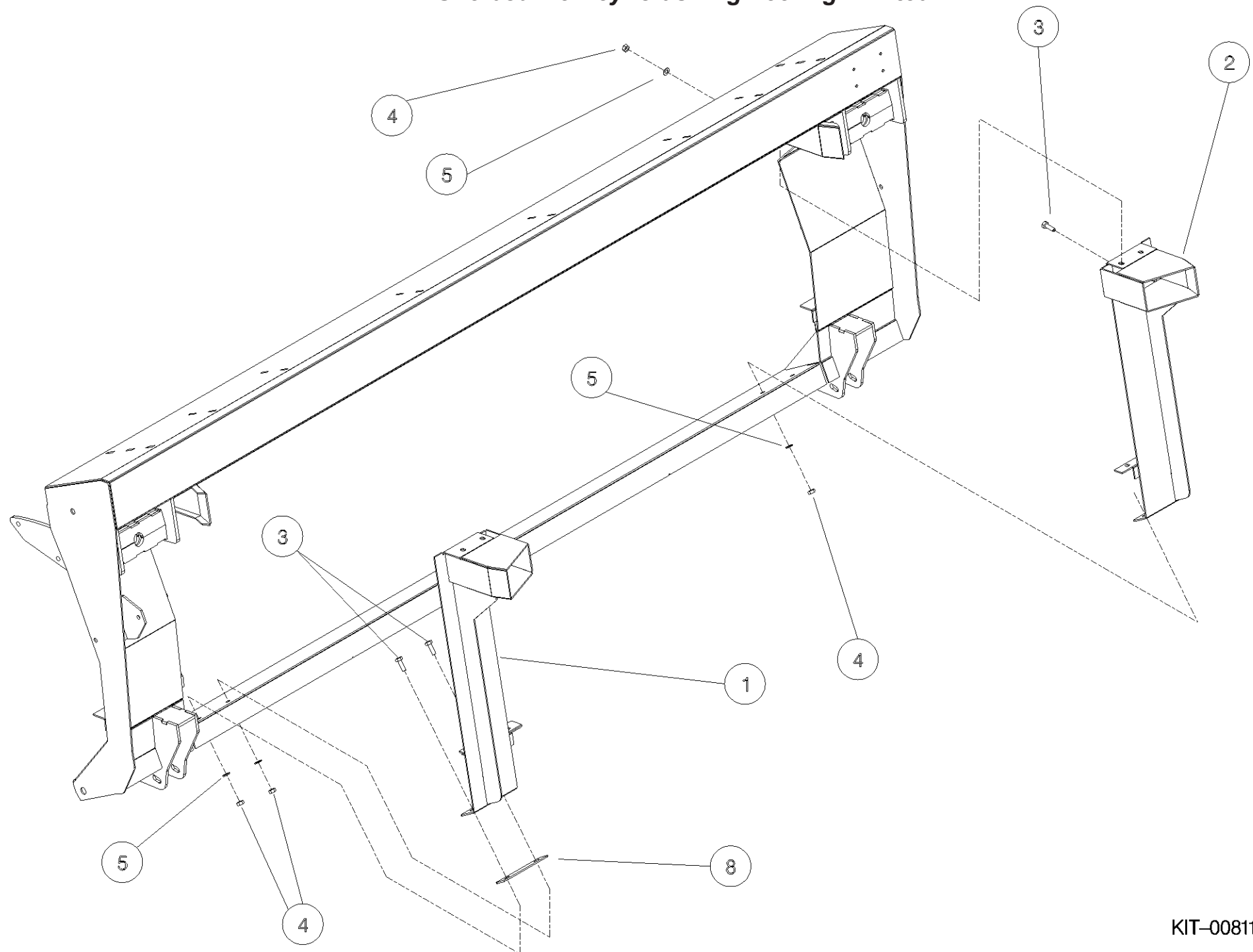
Shelbourne Reynolds Engineering Limited

ASSY NUMBER: KIT-00803				ASSY DESCRIPTION: NH.TR. BOTTOM PICK UP FIXING KIT			
ITEM	PART NO	DESCRIPTION	QTY	ITEM	PART NO	DESCRIPTION	QTY
1							
2							
3							
4							
5							
6							
7							
8							
9							
10							
11							
12							
13							
14							
15							
16	191319 01	CRADLE ASSY	2				
17	SCW-1885	SCREW	4				
18	NUT-0265	NUT	4				
19	WSH-0015	WASHER	4				
20	191615 01	SECURING BLOCK	2				
21	191614 01	SECURING BAR	2				



Shelbourne Reynolds Engineering Limited

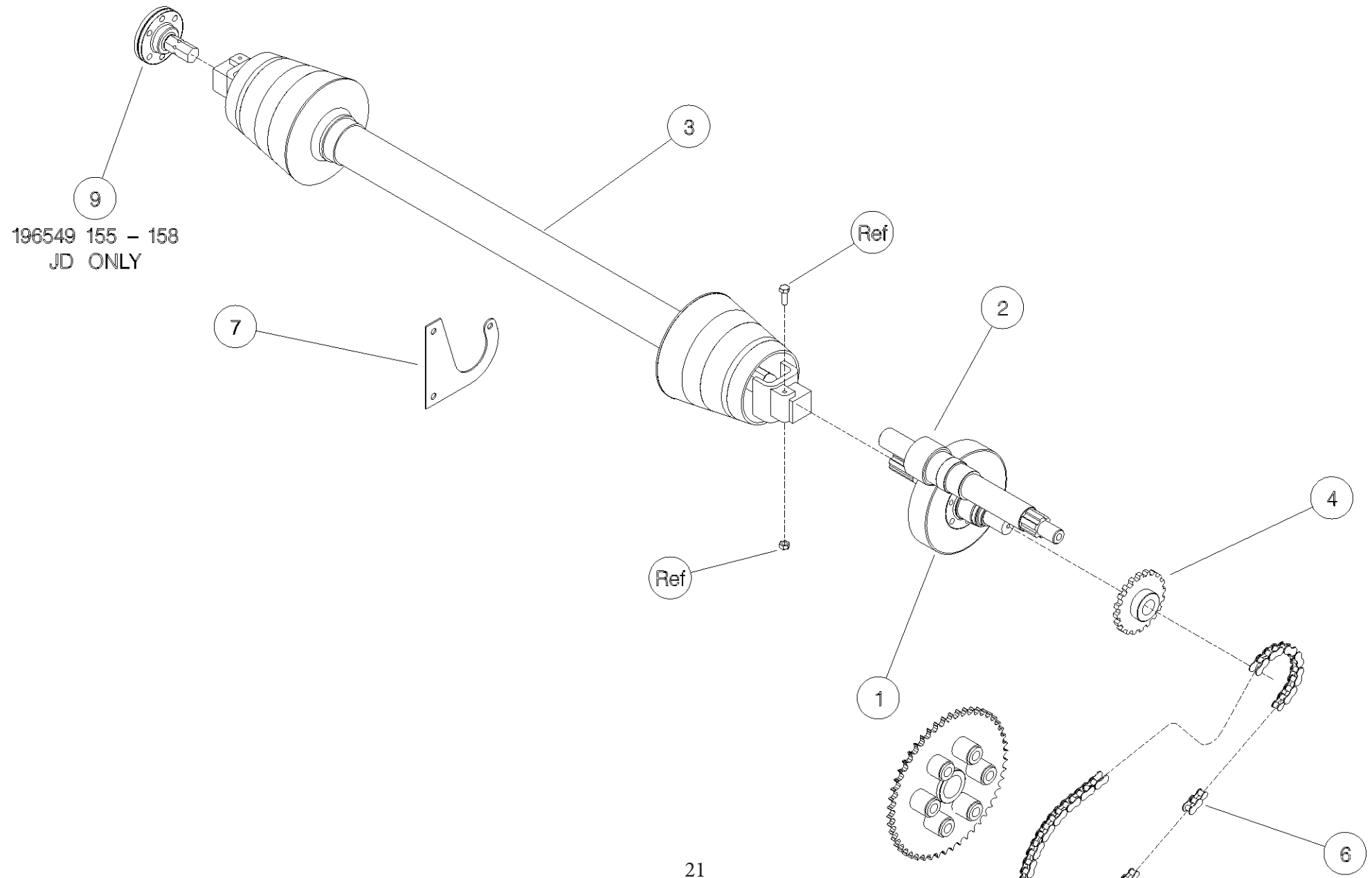
ASSY NUMBER: KIT-00811				ASSY DESCRIPTION: FILL IN KIT NH 2004 CT/TX MODELS			
ITEM	PART NO	DESCRIPTION	QTY	ITEM	PART NO	DESCRIPTION	QTY
1	197234 01	ADAPTOR FILL IN PLATE LH	1				
2	197234 02	ADAPTOR FILL IN PLATE RH	1				
3	HSS-0145	SETSCREW	8				
4	NUT-0263	NYLOC NUT	12				
5	WSH-0012	PLAIN WASHER	20				
6							
7							
8	197242 01	OPTIONAL BOTTOM FILL PL	2				



DRIVE OPTIONS

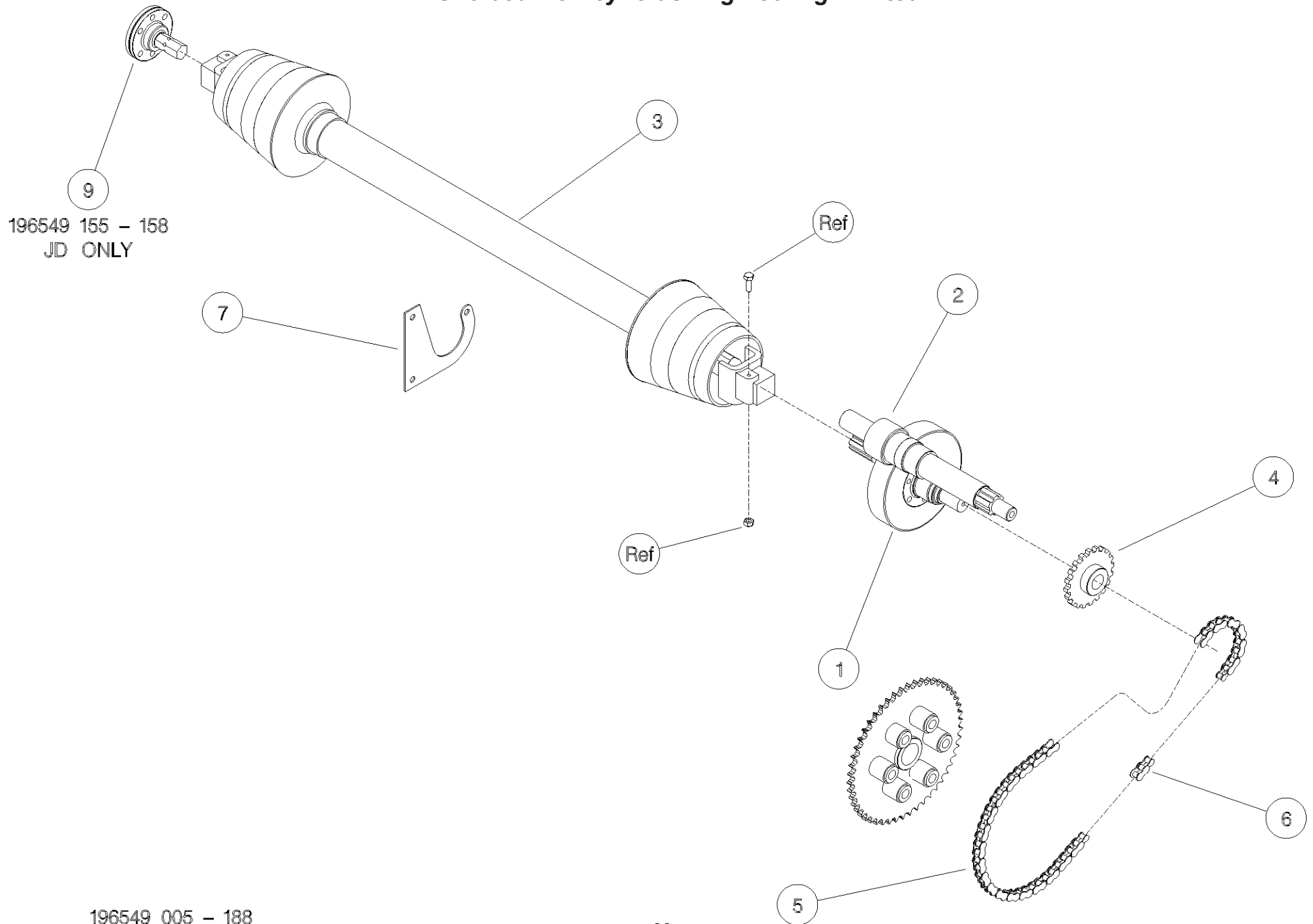
Shelbourne Reynolds Engineering Limited

ASSY NUMBER: 196549 025				ASSY DESCRIPTION: DRIVE KIT CNH CVS/RVS/RSD (18' 5.4m)			
ITEM	PART NO	DESCRIPTION	QTY	ITEM	PART NO	DESCRIPTION	QTY
1a	192592 02	INPUT GEAR (49t)	1				
OR		WITH ROTOR GEARBOX					
1b	192592 12	INPUT GEAR (39t)	1				
		WITHOUT ROTOR GEARBOX					
2a	193599 02	PINION (20t)	1				
OR		WITH ROTOR GEARBOX					
2b	193599 12	PINION (30t)	1				
OR		WITHOUT ROTOR GEARBOX					
2e	198999 12	PINION (30t)	1				
		65mm SHAFT					
3	PTO-26013	PTO(W2500 SERIES	1				
3A	PTO-00080	PTO YOKE-COMBINE (SPARES)	1				
3B	PTO-00083	PTO CROSS BEARING (SPARES)	A/R				
3C	PTO-00119	PTO CLUTCH-HEADER (SPARES)	1				
3D	PTO-00093	PTO GUARD ASSY (SPARES)	1				
3E	BLTA10380	SHEARBOLT	A/R				
3F	NUT-0265	NYLOC NUT	A/R				
4	192768 10	SPROCKET	1				
5	CHN-01920	CHAIN	105				
		(FIXED GEARBOX MACHINES)					
OR	CHN-01920	CHAIN	111				
		(PIVOTING GEARBOX MACHINES)					
6	CHN-01901	JOINING LINK	1				
7	KIT-00931	PTO SUPPORT KIT	1				



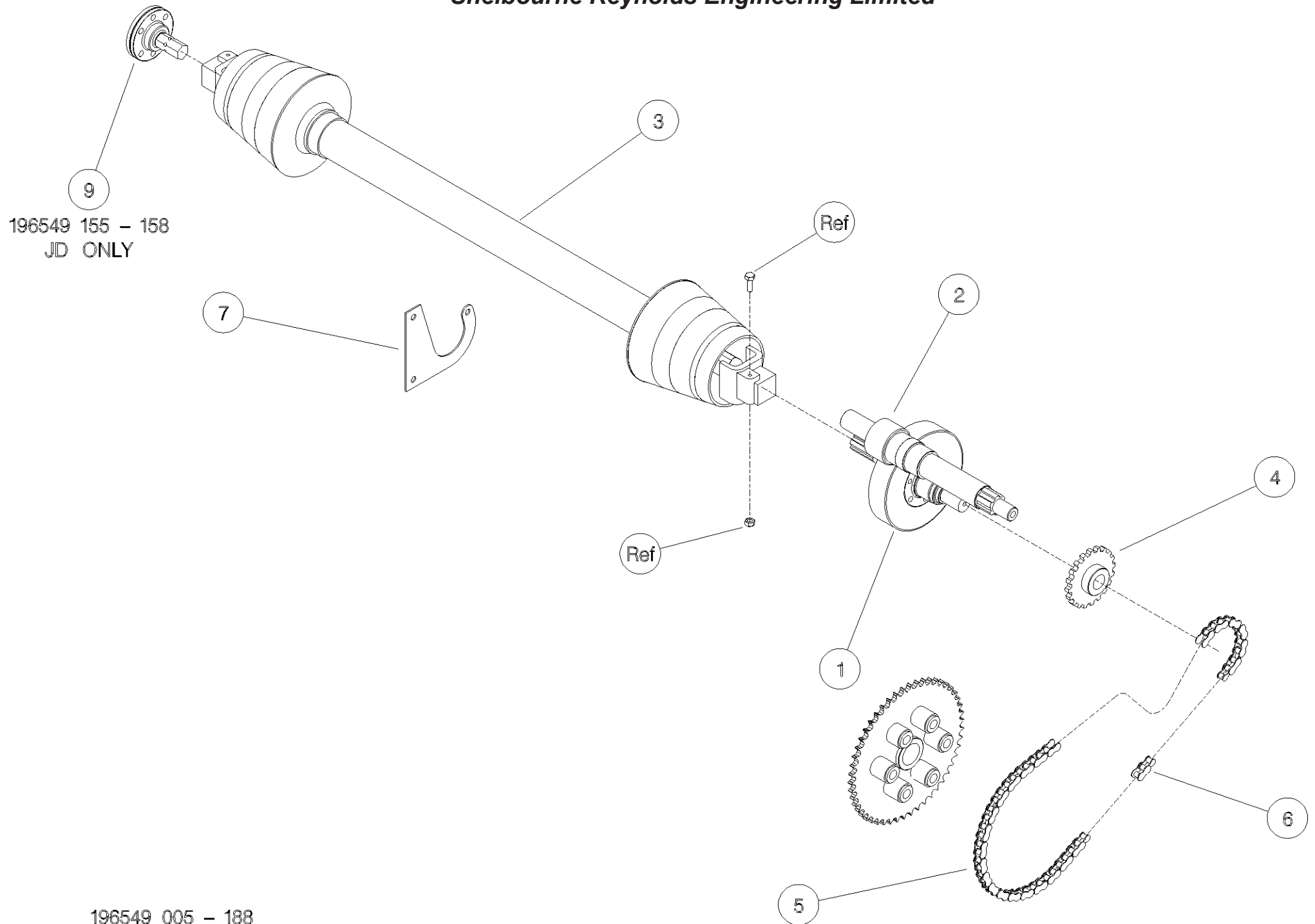
Shelbourne Reynolds Engineering Limited

ASSY NUMBER: 196549 026				ASSY DESCRIPTION: DRIVE KIT NH ERPN PTO C/RVs (20' / 6.0m)			
ITEM	PART NO	DESCRIPTION	QTY	ITEM	PART NO	DESCRIPTION	QTY
1a	192592 02	INPUT GEAR (49t)	1				
OR		WITH ROTOR GEARBOX					
1b	192592 12	INPUT GEAR (39t)	1				
		WITHOUT ROTOR GEARBOX					
2a	193599 02	PINION (20t)	1				
OR		WITH ROTOR GEARBOX					
2b	193599 12	PINION (30t)	1				
OR		WITHOUT ROTOR GEARBOX					
2e	198999 12	PINION (30t)	1				
		65mm SHAFT					
3	PTO-26014	PTO(W2500 SERIES	1				
3A	PTO-00080	PTO YOKE-COMBINE (SPARES)	1				
3B	PTO-00083	PTO CROSS BEARING (SPARES)	A/R				
3C	PTO-00119	PTO CLUTCH-HEADER (SPARES)	1				
3D	PTO-00093	PTO GUARD ASSY (SPARES)	1				
3E	BLTA10380	SHEARBOLT	A/R				
3F	NUT-0265	NYLOC NUT	A/R				
4	192768 10	SPROCKET	1				
5	CHN-01920	CHAIN	105				
		(FIXED GEARBOX MACHINES)					
OR	CHN-01920	CHAIN	111				
		(PIVOTING GEARBOX MACHINES)					
6	CHN-01901	JOINING LINK	1				
7	KIT-00931	PTO SUPPORT KIT	1				



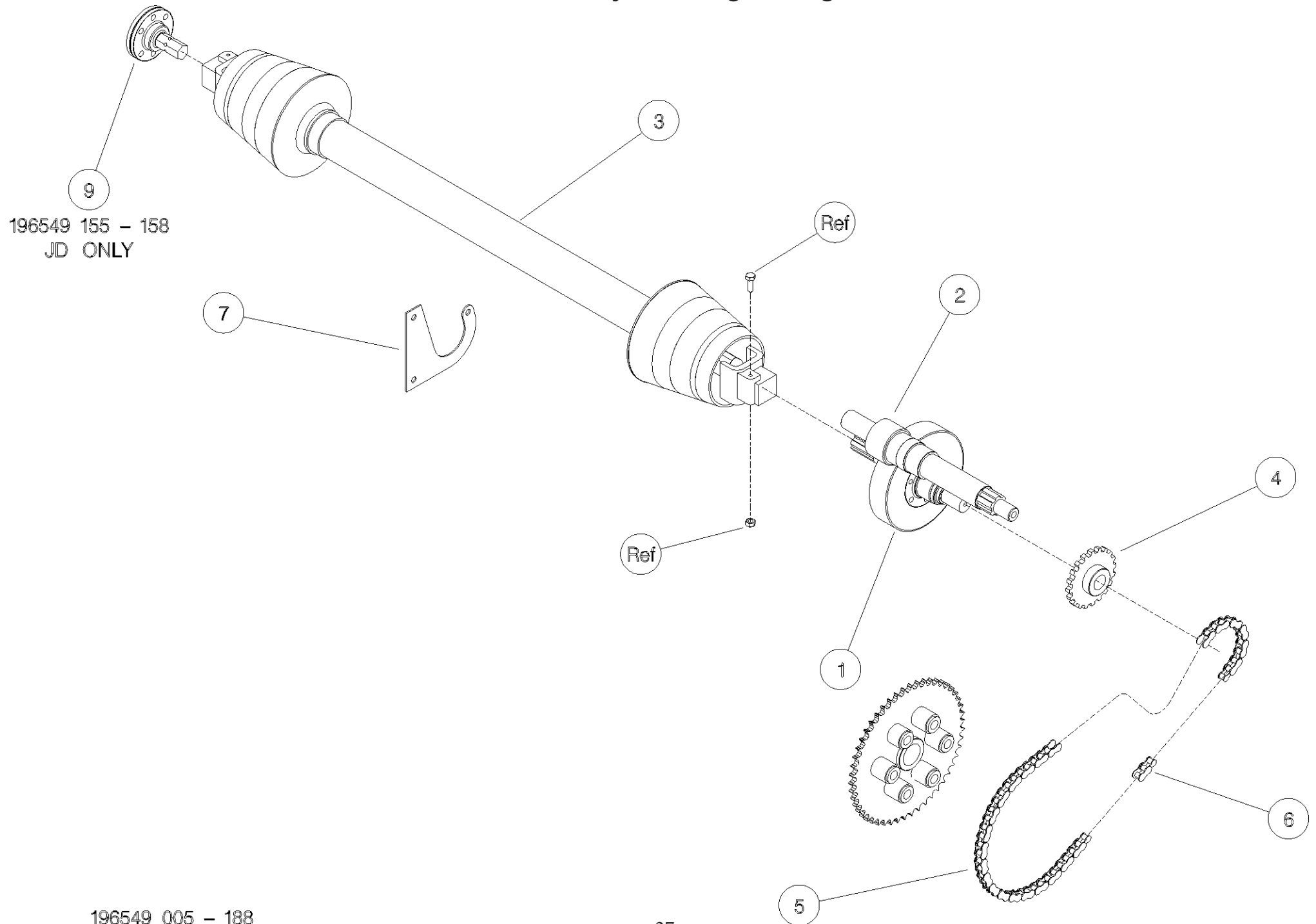
Shelbourne Reynolds Engineering Limited

ASSY NUMBER: 196549 028				ASSY DESCRIPTION: DRIVE KIT NH ERPN PTO C/RVs (22'-32')			
ITEM	PART NO	DESCRIPTION	QTY	ITEM	PART NO	DESCRIPTION	QTY
1a	192592 02	INPUT GEAR (49t)	1				
OR		WITH ROTOR GEARBOX					
1b	192592 12	INPUT GEAR (39t)	1				
		WITHOUT ROTOR GEARBOX					
2a	193599 02	PINION (20t)	1				
OR		WITH ROTOR GEARBOX					
2b	193599 12	PINION (30t)	1				
OR		WITHOUT ROTOR GEARBOX					
2e	198999 12	PINION (30t)	1				
		65mm SHAFT					
3	PTO-26004	PTO(W2500 SERIES	1				
3A	PTO-00080	PTO YOKE-COMBINE (SPARES)	1				
3B	PTO-00083	PTO CROSS BEARING (SPARES)	A/R				
3C	PTO-00119	PTO CLUTCH-HEADER (SPARES)	1				
3D	PTO-00093	PTO GUARD ASSY (SPARES)	1				
3E	BLTA10380	SHEARBOLT	A/R				
3F	NUT-0265	NYLOC NUT	A/R				
4	192768 10	SPROCKET	1				
5	CHN-01920	CHAIN	105				
		(FIXED GEARBOX MACHINES)					
OR	CHN-01920	CHAIN	111				
		(PIVOTING GEARBOX MACHINES)					
6	CHN-01901	JOINING LINK	1				
7	KIT-00931	PTO SUPPORT KIT	1				



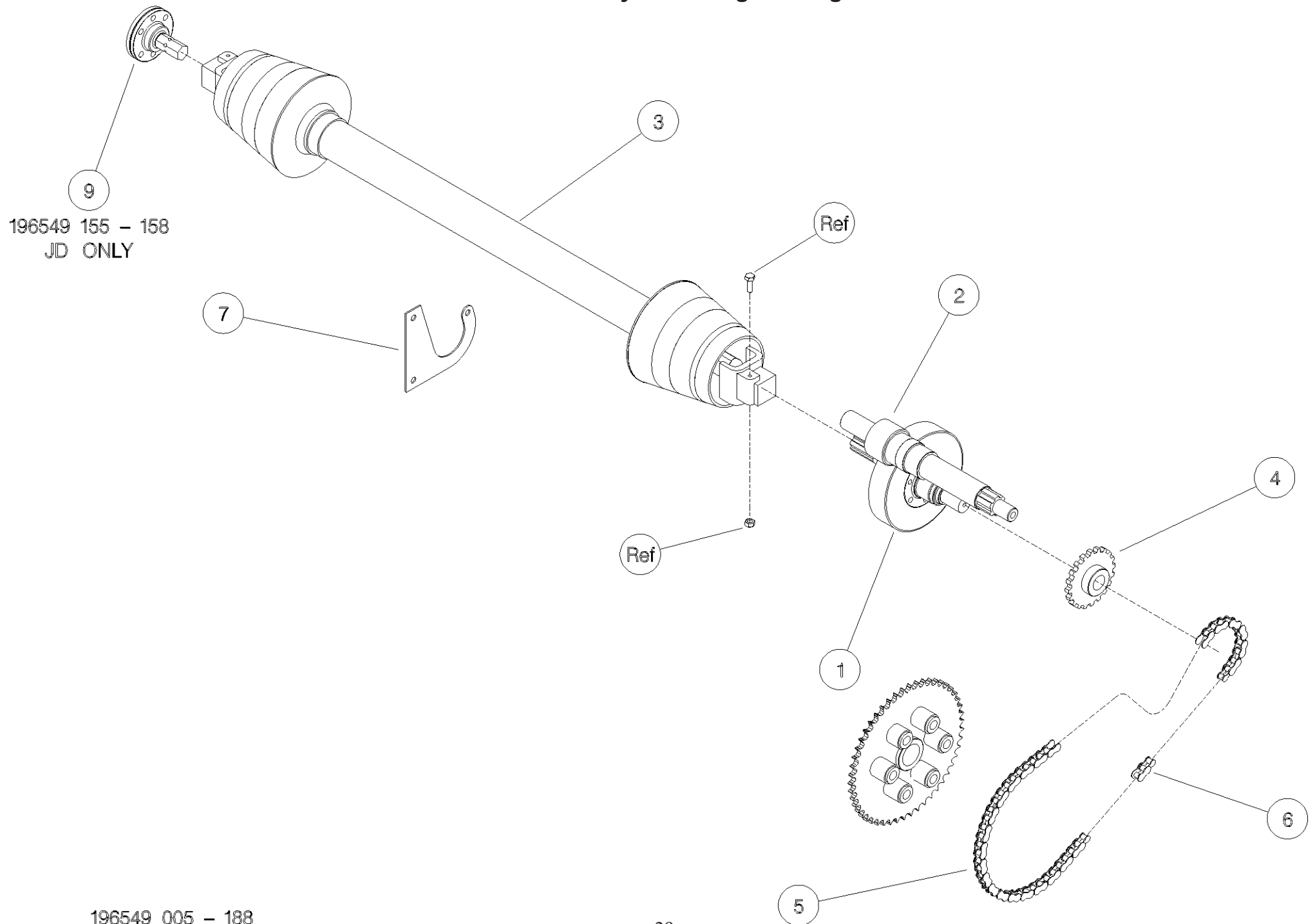
Shelbourne Reynolds Engineering Limited

ASSY NUMBER: 196549 075				ASSY DESCRIPTION: DRIVE KIT NH ERPN SQ DRV C/RVs (18')			
ITEM	PART NO	DESCRIPTION	QTY	ITEM	PART NO	DESCRIPTION	QTY
1a	192592 02	INPUT GEAR (49t)	1				
OR		WITH ROTOR GEARBOX					
1b	192592 12	INPUT GEAR (39t)	1				
		WITHOUT ROTOR GEARBOX					
2a	193599 02	PINION (20t)	1				
OR		WITH ROTOR GEARBOX					
2b	193599 12	PINION (30t)	1				
OR		WITHOUT ROTOR GEARBOX					
2e	198999 12	PINION (30t)	1				
		65mm SHAFT					
3	PTO-26013	PTO(W2500 SERIES	1				
3A	PTO-00080	PTO YOKE-COMBINE (SPARES)	1				
3B	PTO-00083	PTO CROSS BEARING (SPARES)	A/R				
3C	PTO-00119	PTO CLUTCH-HEADER (SPARES)	1				
3D	PTO-00093	PTO GUARD ASSY (SPARES)	1				
3E	BLTA10380	SHEARBOLT	A/R				
3F	NUT-0265	NYLOC NUT	A/R				
4	192768 10	SPROCKET	1				
5	CHN-01920	CHAIN	105				
		(FIXED GEARBOX MACHINES)					
OR	CHN-01920	CHAIN	111				
		(PIVOTING GEARBOX MACHINES)					
6	CHN-01901	JOINING LINK	1				
7							
8	KIT-00312	BEARING BOX ASSEMBLY	1				



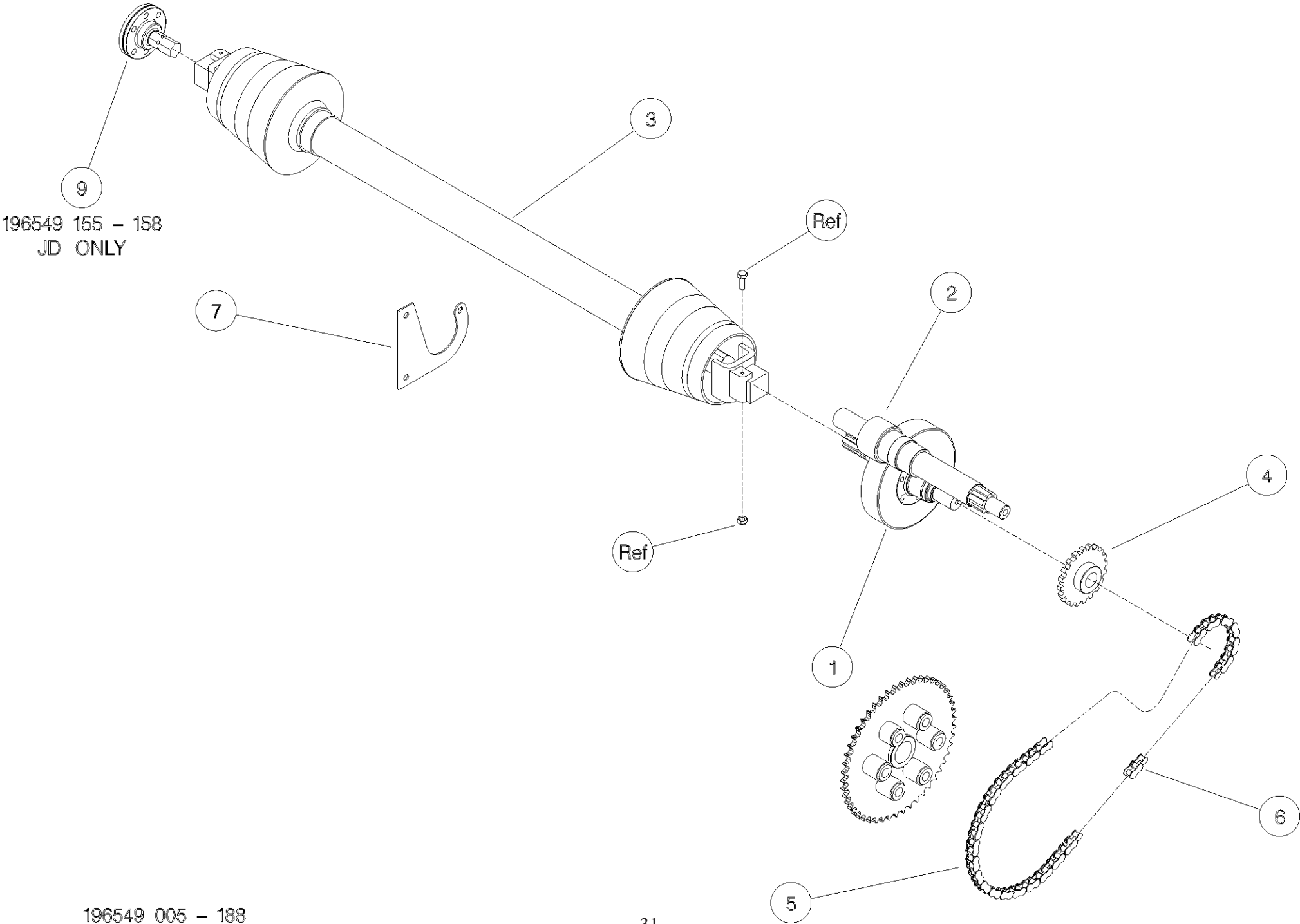
Shelbourne Reynolds Engineering Limited

ASSY NUMBER: 196549 076				ASSY DESCRIPTION: DRIVE KIT NH ERPN SQ DRV C/RVs (20')			
ITEM	PART NO	DESCRIPTION	QTY	ITEM	PART NO	DESCRIPTION	QTY
1a	192592 02	INPUT GEAR (49t)	1				
OR		WITH ROTOR GEARBOX					
1b	192592 12	INPUT GEAR (39t)	1				
		WITHOUT ROTOR GEARBOX					
2a	193599 02	PINION (20t)	1				
OR		WITH ROTOR GEARBOX					
2b	193599 12	PINION (30t)	1				
OR		WITHOUT ROTOR GEARBOX					
2e	198999 12	PINION (30t)	1				
		65mm SHAFT					
3	PTO-26014	PTO(W2500 SERIES	1				
3A	PTO-00080	PTO YOKE-COMBINE (SPARES)	1				
3B	PTO-00083	PTO CROSS BEARING (SPARES)	A/R				
3C	PTO-00119	PTO CLUTCH-HEADER (SPARES)	1				
3D	PTO-00093	PTO GUARD ASSY (SPARES)	1				
3E	BLTA10380	SHEARBOLT	A/R				
3F	NUT-0265	NYLOC NUT	A/R				
4	192768 10	SPROCKET	1				
5	CHN-01920	CHAIN	105				
		(FIXED GEARBOX MACHINES)					
OR	CHN-01920	CHAIN	111				
		(PIVOTING GEARBOX MACHINES)					
6	CHN-01901	JOINING LINK	1				
7							
8	KIT-00312	BEARING BOX ASSEMBLY	1				



Shelbourne Reynolds Engineering Limited

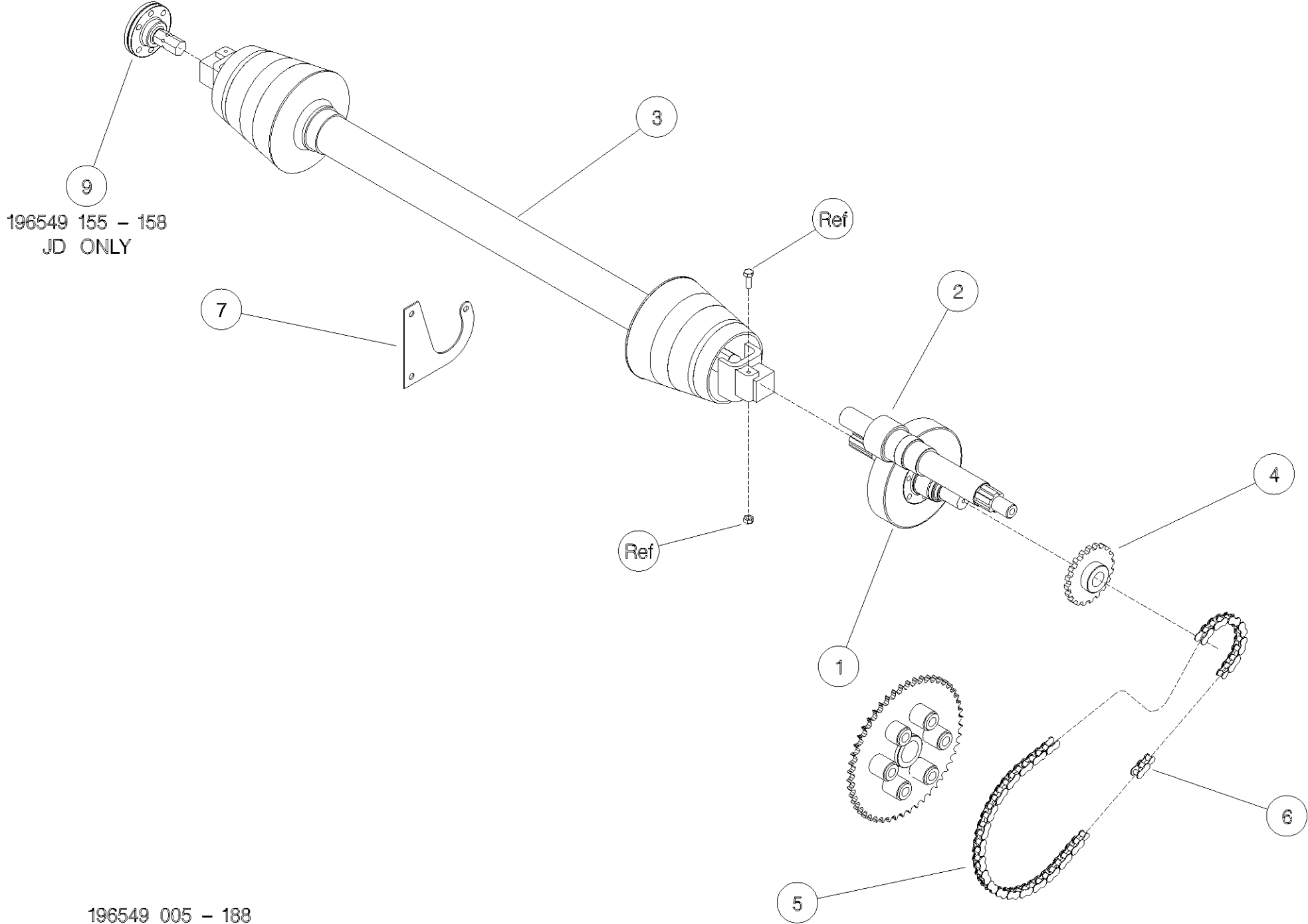
ASSY NUMBER: 196549 078				ASSY DESCRIPTION: DRIVE KIT NH ERPN SQ DRV C/RVs (22'-32')			
ITEM	PART NO	DESCRIPTION	QTY	ITEM	PART NO	DESCRIPTION	QTY
1a	192592 02	INPUT GEAR (49t)	1				
OR		WITH ROTOR GEARBOX					
1b	192592 12	INPUT GEAR (39t)	1				
		WITHOUT ROTOR GEARBOX					
2a	193599 02	PINION (20t)	1				
OR		WITH ROTOR GEARBOX					
2b	193599 12	PINION (30t)	1				
OR		WITHOUT ROTOR GEARBOX					
2e	198999 12	PINION (30t)	1				
		65mm SHAFT					
3	PTO-26004	PTO(W2500 SERIES	1				
3A	PTO-00080	PTO YOKE-COMBINE (SPARES)	1				
3B	PTO-00083	PTO CROSS BEARING (SPARES)	A/R				
3C	PTO-00119	PTO CLUTCH-HEADER (SPARES)	1				
3D	PTO-00093	PTO GUARD ASSY (SPARES)	1				
3E	BLTA10380	SHEARBOLT	A/R				
3F	NUT-0265	NYLOC NUT	A/R				
4	192768 10	SPROCKET	1				
5	CHN-01920	CHAIN	105				
		(FIXED GEARBOX MACHINES)					
OR	CHN-01920	CHAIN	111				
		(PIVOTING GEARBOX MACHINES)					
6	CHN-01901	JOINING LINK	1				
7							
8	KIT-00312	BEARING BOX ASSEMBLY	1				



196549 155 - 158
JD ONLY

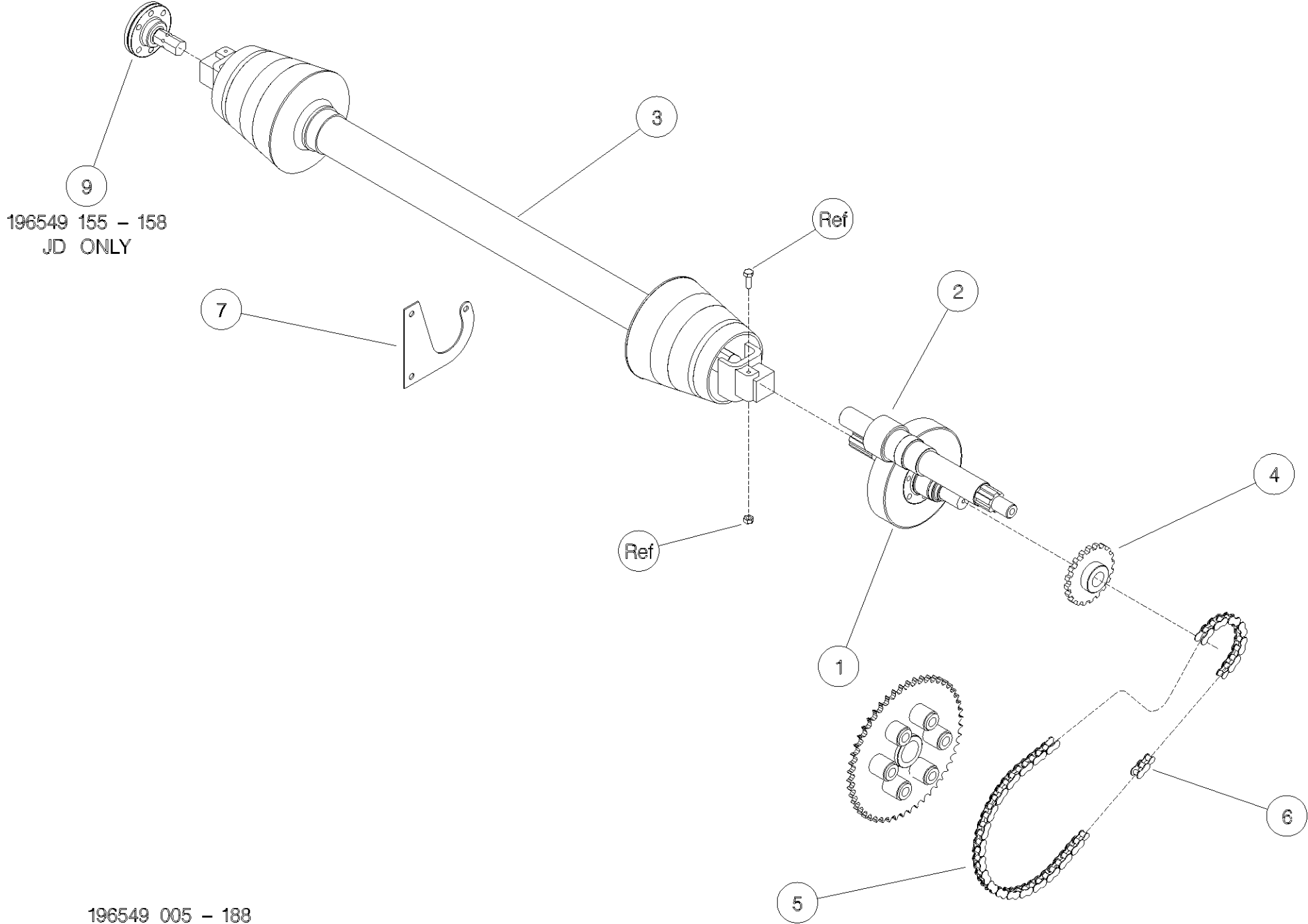
Shelbourne Reynolds Engineering Limited

ASSY NUMBER: 196549 125				ASSY DESCRIPTION: DRIVE KIT CNH CVS/RVS/RSD (18' 5.4m)			
ITEM	PART NO	DESCRIPTION	QTY	ITEM	PART NO	DESCRIPTION	QTY
1A	192592 07	INPUT GEAR (45t) WITH ROTOR GEARBOX	1				
1B/E	192592 13	INPUT GEAR (33t) (2015 & ON) WITHOUT ROTOR GEARBOX	1				
OR	192592 11	INPUT GEAR (35t) (UP TO 2015) WITHOUT ROTOR GEARBOX	1				
2A	193599 07	PINION (24t) WITH ROTOR GEARBOX	1				
2B	193599 11	PINION (34t) WITHOUT ROTOR GEARBOX	1				
2E	198999 13	PINION (36t) (2015 & ON) GEARBOX WITH 65mm SHAFT	1				
OR	198999 11	PINION (34t) (UP TO 2015) GEARBOX WITH 65mm SHAFT	1				
3	PTO-26013WE	PTO	1				
3a	PTO-00080WE	PTO YOKE-COMBINE (COLLAR)					
OR	PTO-00080	PTO YOKE-COMBINE (PUSH PIN)					
3b	PTO-00083	PTO CROSS BEARING					
3c	PTO-00119	PTO SHEAR BOLT CLUTCH-HEADER					
3d	PTO-00093WE	PTO GUARD ASSY (BLACK)					
OR	PTO-00093	PTO GUARD ASSY (YELLOW)					
3e	PTO-00968	EASY LOCK GUARD CLIPS (RED)					
3g	BLTA10384	SHEARBOLT					
3h	NUT-0265	NYLOC NUT					
4	192768 16	SPROCKET (15t) (2015 & ON)	1				
OR	192768 04	SPROCKET (16t) (UPTO 2015)	1				
5	CHN-01991	CHAIN (99 LINKS PLUS JOINER)	1				
5a	CHN-01901	JOINING LINK					
6	CHN-01910	HALF LINK	A/R				
7	KIT-00931	PTO SUPPORT KIT	1				



Shelbourne Reynolds Engineering Limited

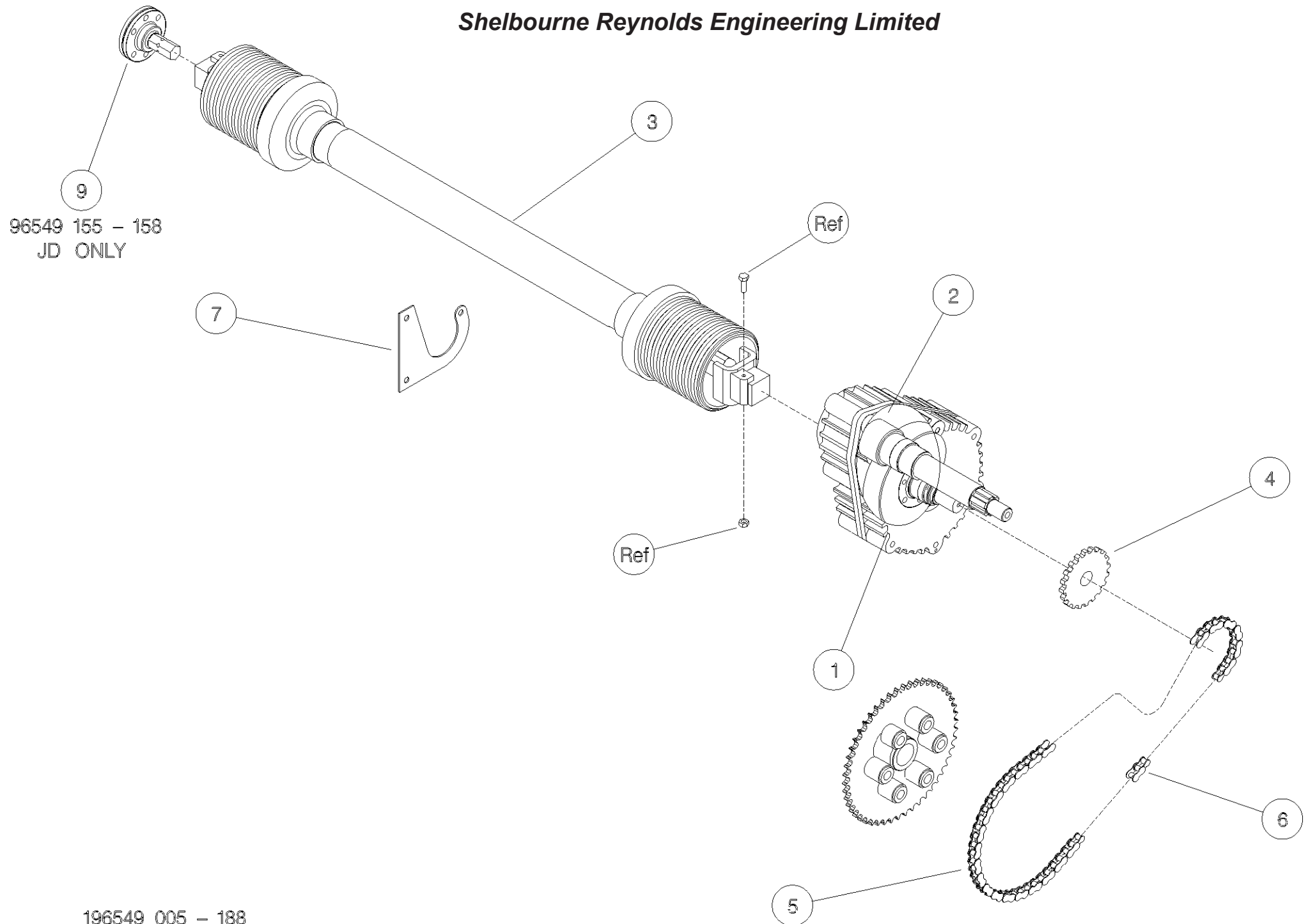
ASSY NUMBER: 196549 126				ASSY DESCRIPTION: DRIVE KIT CNH CVS/RVS/RSD (20' 6.0m)			
ITEM	PART NO	DESCRIPTION	QTY	ITEM	PART NO	DESCRIPTION	QTY
1A	192592 07	INPUT GEAR (45t) WITH ROTOR GEARBOX	1				
1B/E	192592 13	INPUT GEAR (33t) (2015 & ON) WITHOUT ROTOR GEARBOX	1				
OR	192592 11	INPUT GEAR (35t) (UP TO 2015) WITHOUT ROTOR GEARBOX	1				
2A	193599 07	PINION (24t) WITH ROTOR GEARBOX	1				
2B	193599 11	PINION (34t) WITHOUT ROTOR GEARBOX	1				
2E	198999 13	PINION (36t) (2015 & ON) GEARBOX WITH 65mm SHAFT					
OR	198999 11	PINION (34t) (UP TO 2015) GEARBOX WITH 65mm SHAFT	1				
3	PTO-26014WE	PTO	1				
3a	PTO-00080WE	PTO YOKE-COMBINE (COLLAR)					
OR	PTO-00080	PTO YOKE-COMBINE (PUSH PIN)					
3b	PTO-00083	PTO CROSS BEARING					
3c	PTO-00119	PTO SHEAR BOLT CLUTCH-HEADER					
3d	PTO-00093WE	PTO GUARD ASSY (BLACK)					
OR	PTO-00093	PTO GUARD ASSY (YELLOW)					
3e	PTO-00968	EASY LOCK GUARD CLIPS (RED)					
3g	BLTA10384	SHEARBOLT					
3h	NUT-0265	NYLOC NUT					
4	192768 16	SPROCKET (15t) (2015 & ON)	1				
OR	192768 04	SPROCKET (16t) (UPTO 2015)	1				
5	CHN-01991	CHAIN (99 LINKS PLUS JOINER)	1				
5a	CHN-01901	JOINING LINK					
6	CHN-01910	HALF LINK	A/R				
7	KIT-00931	PTO SUPPORT KIT	1				



Shelbourne Reynolds Engineering Limited

ASSY NUMBER: 196549 128				ASSY DESCRIPTION: DRIVE KIT CNH CVS/RVS/RSD/Excel (22-42')			
ITEM	PART NO	DESCRIPTION	QTY	ITEM	PART NO	DESCRIPTION	QTY
1A	192592 07	INPUT GEAR (45t) WITH ROTOR GEARBOX	1				
1B/E	192592 13	INPUT GEAR (33t) (2015 & ON) WITHOUT ROTOR GEARBOX	1				
OR	192592 11	INPUT GEAR (35t) (UPTO 2015) WITHOUT ROTOR GEARBOX	1				
2A	193599 07	PINION (24t) WITH ROTOR GEARBOX	1				
2B	193599 11	PINION (34t) WITHOUT ROTOR GEARBOX	1				
2E	198999 13	PINION (36t) (2015 & ON) GEARBOX WITH 65mm SHAFT	1				
OR	198999 11	PINION (34t) (UPTO 2015) GEARBOX WITH 65mm SHAFT	1				
3	PTO-26004WE	PTO	1				
3a	PTO-00080WE	PTO YOKE-COMBINE (COLLAR)					
OR	PTO-00080	PTO YOKE-COMBINE (PUSH PIN)					
3b	PTO-00083	PTO CROSS BEARING					
3c	PTO-00119	PTO SHEAR BOLT CLUTCH-HEADER					
3d	PTO-00093WE	PTO GUARD ASSY (BLACK)					
OR	PTO-00093	PTO GUARD ASSY (YELLOW)					
3e	PTO-00968	EASY LOCK GUARD CLIPS (RED)					
3g	BLTA10384	SHEARBOLT					
3h	NUT-0265	NYLOC NUT					
4	192768 16	SPROCKET (15t) (2015 & ON)	1				
OR	192768 04	SPROCKET (16t) (UPTO 2015)	1				
5	CHN-01991	CHAIN (99 LINKS PLUS JOINER)	1				
5a	CHN-01901	JOINING LINK					
6	CHN-01910	HALF LINK	A/R				
7	KIT-00931	PTO SUPPORT KIT	1				

Shelbourne Reynolds Engineering Limited

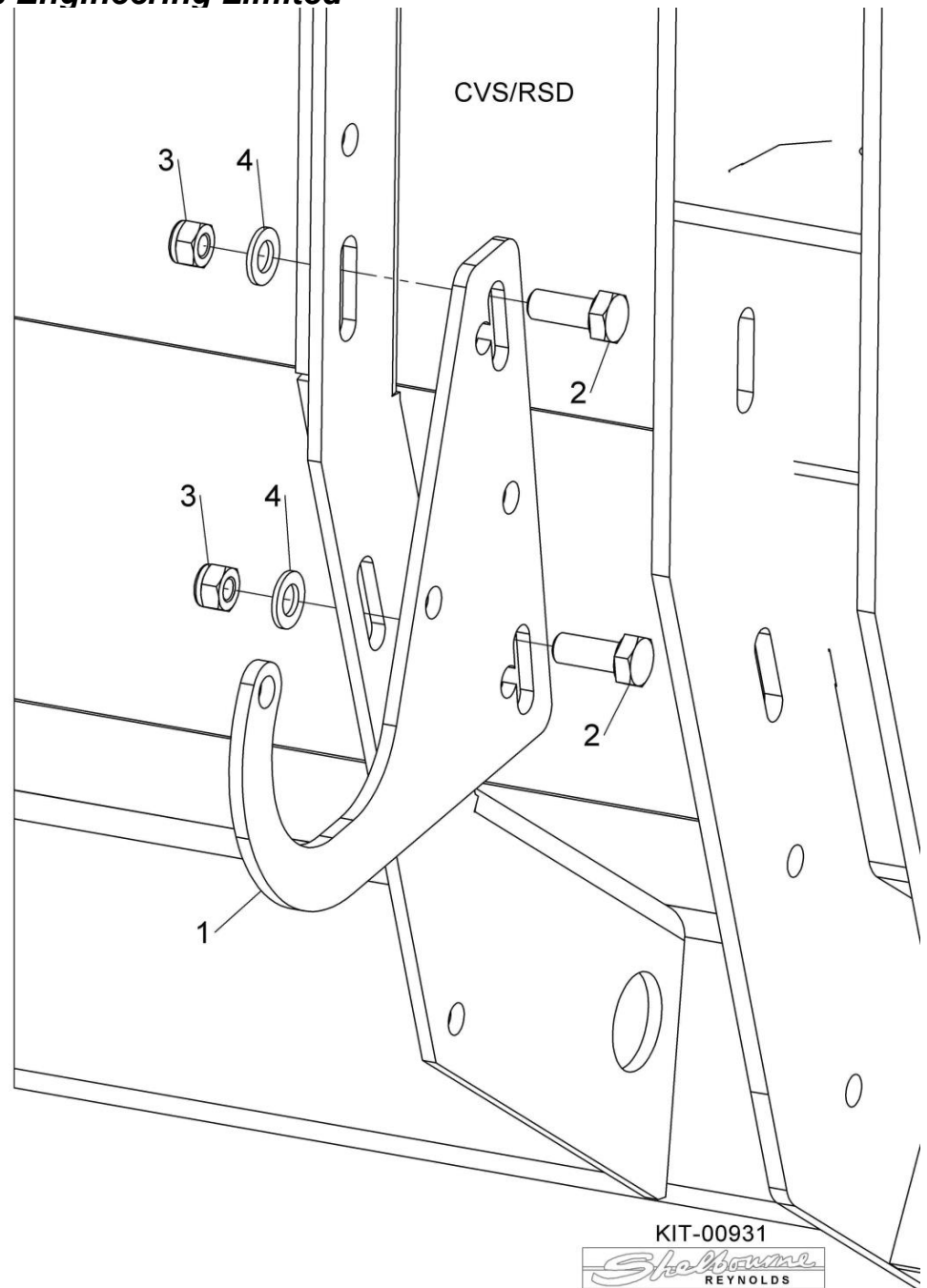
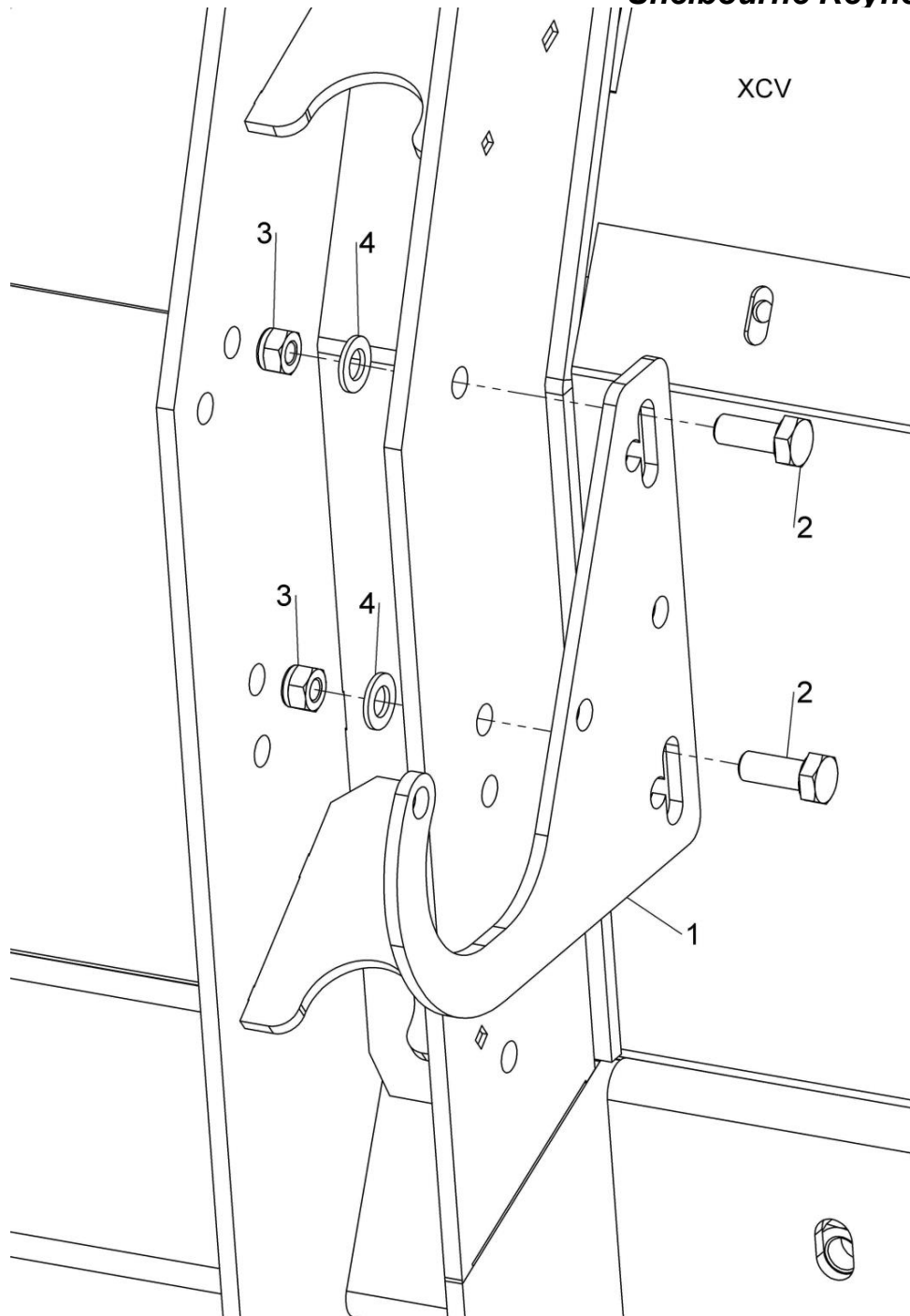


96549 155 – 158
JD ONLY

196549 005 – 188

Shelbourne Reynolds Engineering Limited

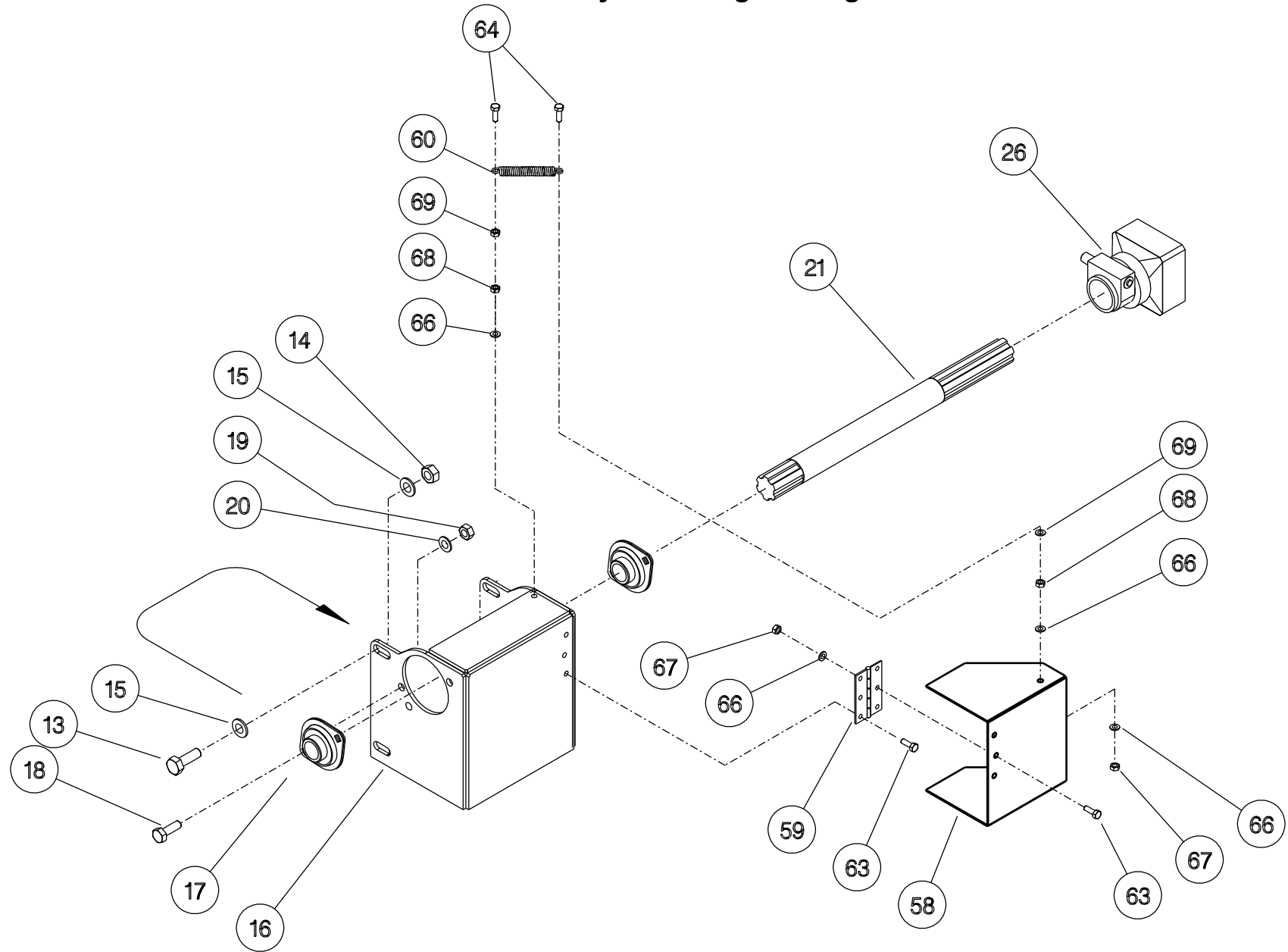
[illegible]



Shelbourne Reynolds Engineering Limited

ASSY NUMBER: KIT-00312				ASSY DESCRIPTION: BEARING BOX ASSY (NH SQ DRIVE)			
ITEM	PART NO	DESCRIPTION	QTY	ITEM	PART NO	DESCRIPTION	QTY
1				41			
2				42			
3				43			
4				44			
5				45			
6				46			
7				47			
8				48			
9				49			
10				50			
11				51			
12				52			
13	HSS-0238	SET SCREW	4	53			
14	NUT-0269	NYLOC NUT	4	54			
15	WSH-0015	PLAIN WASHER	4	55			
16	195822 01	BEARING BOX	1	56			
17	BRG-23510	BEARING	2	57			
18	HSS-0191	SET SCREW	4	58	190938 01	COUPLING COVER	1
19	NUT-0265	NYLOC NUT	4	59	HIN-0100	HINGE (3"BUTT HINGE)	1
20	WSH-0015	PLAIN WASHER	4	60	SPG-0005	SPRING (TENSION S55)	1
21	195823 01	INPUT SHAFT	1	61			
22				62			
23				63	HSS-0082	SET SCREW	6
24				64	HSS-0086	SET SCREW	2
25				65			
26	190597 01	DRIVE COUPLING	1	66	WSH-0009	PLAIN WASHER	8
27				67	NUT-0260	NYLOC NUT	8
28				68	NUT-0160	PLAIN NUT	2
29				69	WSH-0056	SPRING WASHER	2
30				70			
31				71			
32				72			
33				73			
34				74			
35				75			
36				76			
37				77			
38				78			
39				79			
40				80			

Shelbourne Reynolds Engineering Limited

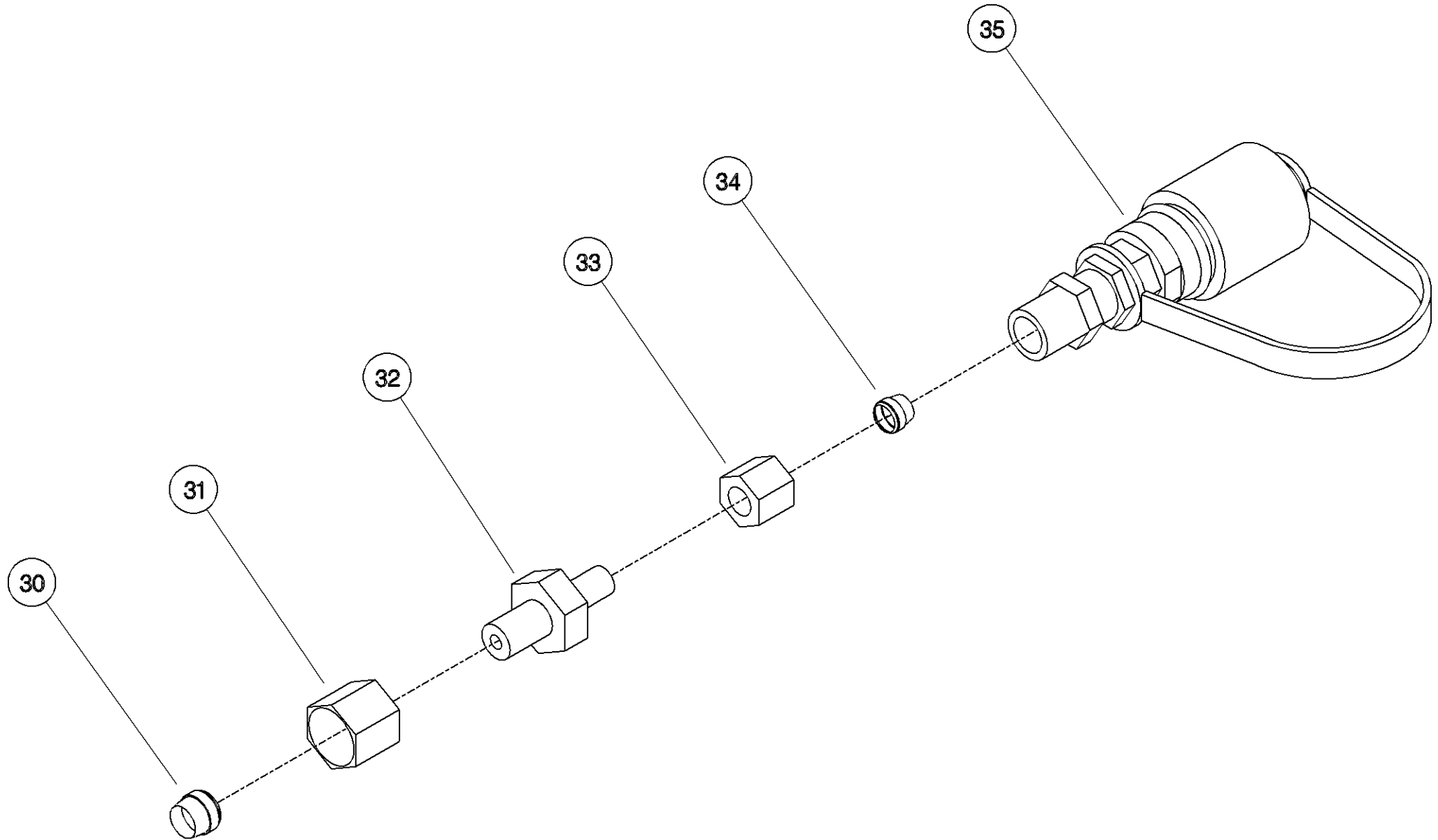


NOTE :
 BOTH BEARINGS (ITEM 17) BOLT
 TO THE INSIDE FACE OF THE BEARING BOX,
 WITH THE LOCKING COLLARS FACING
 INWARDS.

HYDRAULIC KITS

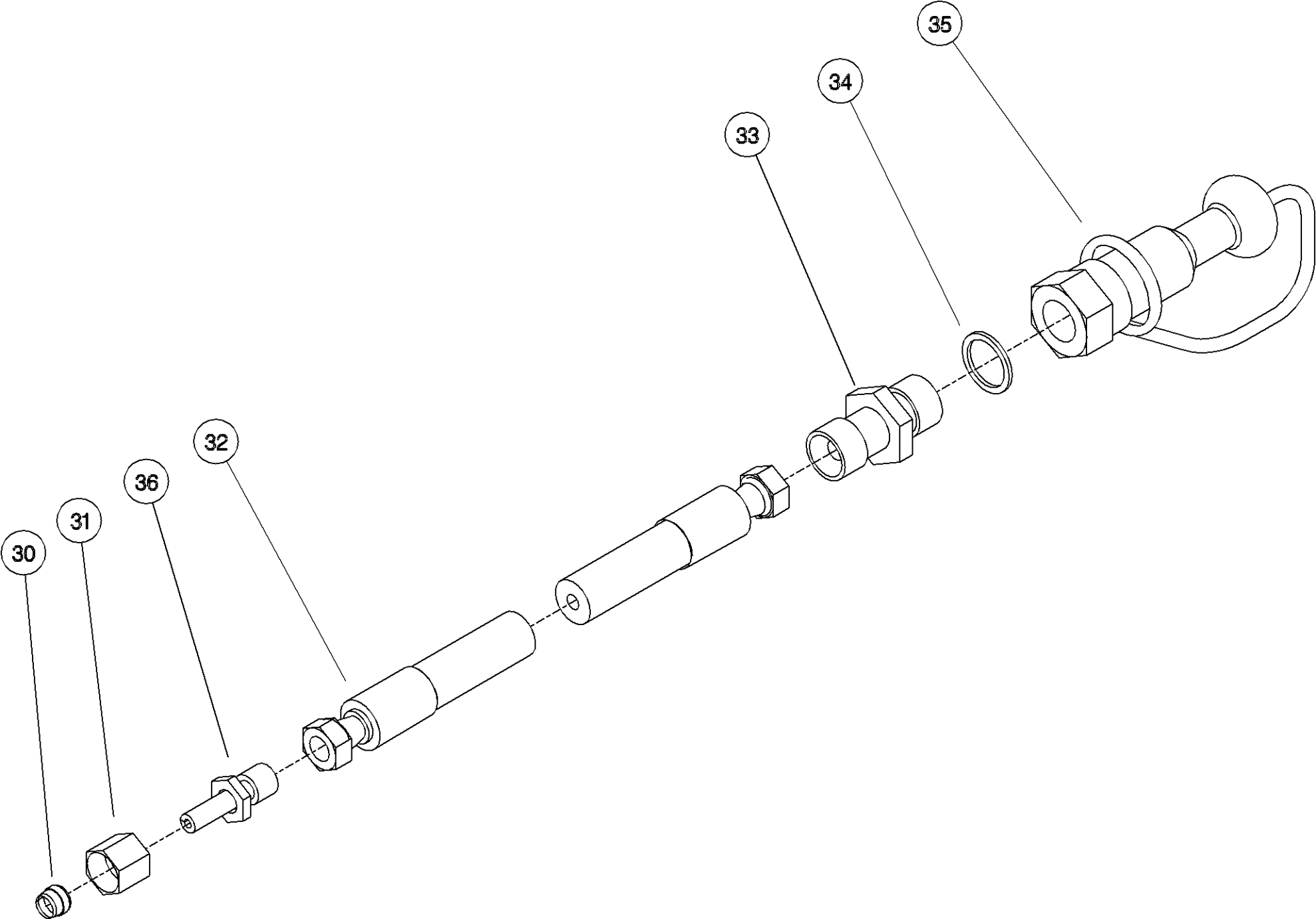
Shelbourne Reynolds Engineering Limited

ASSY NUMBER: KIT-01702				ASSY DESCRIPTION: HYDRAULIC PROBE ADAPTOR			
ITEM	PART NO	DESCRIPTION	QTY	ITEM	PART NO	DESCRIPTION	QTY
1				41			
2				42			
3				43			
4				44			
5				45			
6				47			
7				48			
8				49			
9				50			
10				51			
11				52			
12				53			
13				54			
14				55			
15				56			
16				57			
17				58			
18				59			
19				60			
20				61			
21				62			
22				63			
23				64			
24				65			
25				66			
26				67			
27				68			
29				69			
30	FIT-0056	OLIVE	1	70			
31	FIT-0051	NUT	1	71			
32	190860 01	HYDRAULIC FITTING		72			
				73			
33	FIT-0050	NUT		74			
34	FIT-0055	OLIVE	1	75			
35	COU-0123	COUPLING	1	76			
36				77			
37				78			
38				79			
39				80			
40				81			



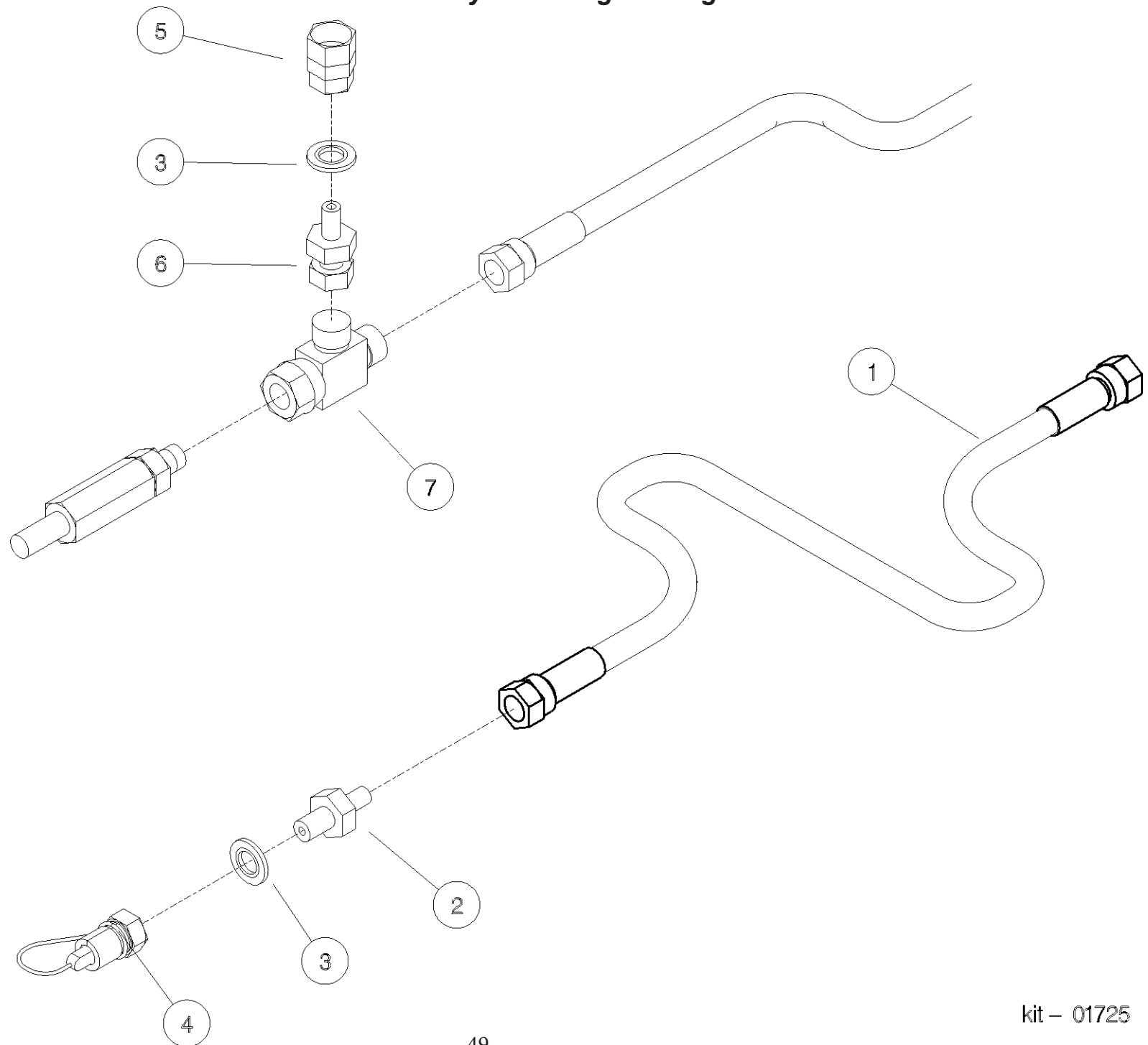
Shelbourne Reynolds Engineering Limited

ASSY NUMBER: KIT-01710				ASSY DESCRIPTION: HYDRAULIC FITTING KIT			
ITEM	PART NO	DESCRIPTION	QTY	ITEM	PART NO	DESCRIPTION	QTY
30	FIT-0056	OLIVE	2				
31	FIT-0051	NUT	2				
32	HHAC18510	HOSE (2019 & ON)	1				
OR	HHAC18505	HOSE (UP TO 2019)	1				
33	HMA-0052	ADAPTOR	1				
34	WSH-1005	WASHER	1				
35	COU-0125	PULL BRAKE COUPLING	1				
36	FIT-0047	FITTING (UPTO 2019)	1				
37	RP100040	PIPE (UPTO 2019)	1				



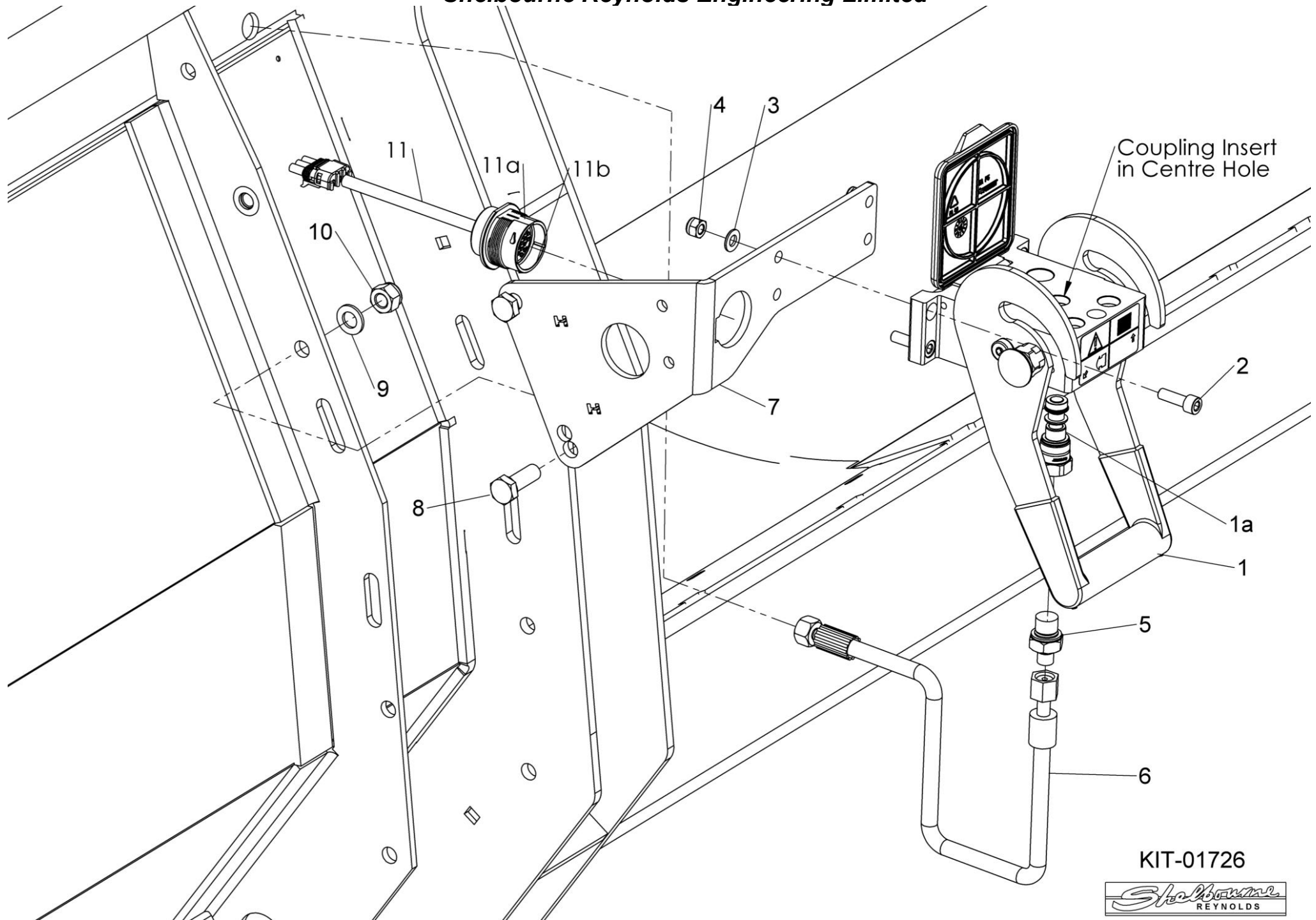
Shelbourne Reynolds Engineering Limited

[illegible]



Shelbourne Reynolds Engineering Limited

ASSY NUMBER: KIT-01726				ASSY DESCRIPTION: CNH HYDRAULIC MULTICOUPLER KIT			
ITEM	PART NO	DESCRIPTION	QTY	ITEM	PART NO	DESCRIPTION	QTY
1	HQR-95010	FASTER MULTI COUPLER	1				
1a	HQR-15025	FEM COUPLING INSERT					
1b	HQR-95040	SPARE RED BUTTON KIT					
2	SCW-0136	HT CAP HEAD SCREW	4				
3	WSH-0012	PLAIN WASHER	4			COUPLING INSERT (ITEM 1a)	
4	NUT-0263	NYLOC NUT	4			FITS INTO CENTRE HOLE	
5	HAPAK0325	HYDRAULIC ADAPTOR	1				
6	HHAC07910	HYDRAULIC HOSE ASSY	1				
7	199711 01	MULTICOUPLER MTG PLT	1				
8	HSS-0241	SETSCREW	2				
9	WSH-0018	PLAIN WASHER	2				
10	NUT-0269	NYLOC NUT	2				
11	197040 01	LIGHT PLUG (IF LIGHTS FITTED)					
11a	ECN-09060	SPARE LOCK WASHER					
11b	ECN-09050	SPARE PANEL NUT					



KIT-01726