

# *CX72 Shelbourne Header* (1997)

## PARTS MANUAL

*Shelbourne*  
REYNOLDS

Shelbourne Reynolds Engineering Ltd

Stanton

Bury St Edmunds

Suffolk IP31 2AR

England

Telephone: 01359 250415

Fax. No: 01359 250464

(Stores direct 01359 251231)

(Stores direct 01359 252031)



THE QUEEN'S AWARD FOR  
TECHNOLOGICAL ACHIEVEMENT



THE QUEEN'S AWARD FOR  
EXPORT ACHIEVEMENT



## **SHELBOURNE HEADER PARTS MANUAL**

Your *Shelbourne* Header is designed to fit many different types of combine.

For this reason the machine number index is broken down into sections for identification. Your serial and machine numbers are listed below:

SHELBOURNE HEADER SERIAL NUMBER \_\_\_\_\_

SHELBOURNE HEADER MACHINE NUMBER \_\_\_\_\_

ADAPTOR PLATE ASSEMBLY \_\_\_\_\_

DRIVE KIT \_\_\_\_\_

HYDRAULIC FITTING KIT \_\_\_\_\_

OTHER KIT OPTIONS \_\_\_\_\_

\_\_\_\_\_  
\_\_\_\_\_  
\_\_\_\_\_

This manual contains all parts common to the *Shelbourne* Header and is used in conjunction with the combine fittings manual, which contains the adaptor plate, and drive kit parts and fitting, and any other options available.

### **MACHINE IDENTIFICATION**

The *Shelbourne* Header machine identification number is engraved on a plate on the top right hand corner of the header.

The adaptor plate has a plate on the top right hand corner also with the adaptor plate assembly number engraved on it.

The drive kit can be identified by description, and use of the drive kit identification number marked above.

## ORDERING SPARE PARTS

To ensure that you order the correct part from your SRE dealer please use the following procedure.

### ALWAYS QUOTE THE MACHINE AND SERIAL NUMBERS WHEN ORDERING.

Refer to the front of this parts list book (machine assemblies), decide if the part you want is on:

*Shelbourne* Head  
Adaptor Kit  
Drive Kit

If your part is on the Adaptor Kit, identify by matching the part number from the adaptor plate with that in the top left hand corner of the parts lists. You will find the appropriate drawing accompanying the parts list.

If the part you require is on the drive kit, ensure that you have the parts listing for the correct combine model and width. Then progress through to the next drawing following that list, for indication of that part.

If the part you require is on the *Shelbourne* Head assembly, identify the appropriate assembly by matching the part number from the *Shelbourne* Head with the page with the same number marked on the top left hand side.

Use the following sub assembly numbers and descriptions to find the area of the machine that your part is required, i.e. you need a part which is fitted to the auger, your part will be in the auger assembly parts list.

Having decided which sub-assembly your part should be under, use the number beside that sub-assembly description which will begin with 1960-- -- to find the parts listing of the sub-assembly further on in the manual. The number will be printed in the top left hand corner, the sub-assemblies are in numerical order.

Having found the correct parts list, you will find the corresponding drawing by processing through the manual to the next drawing.

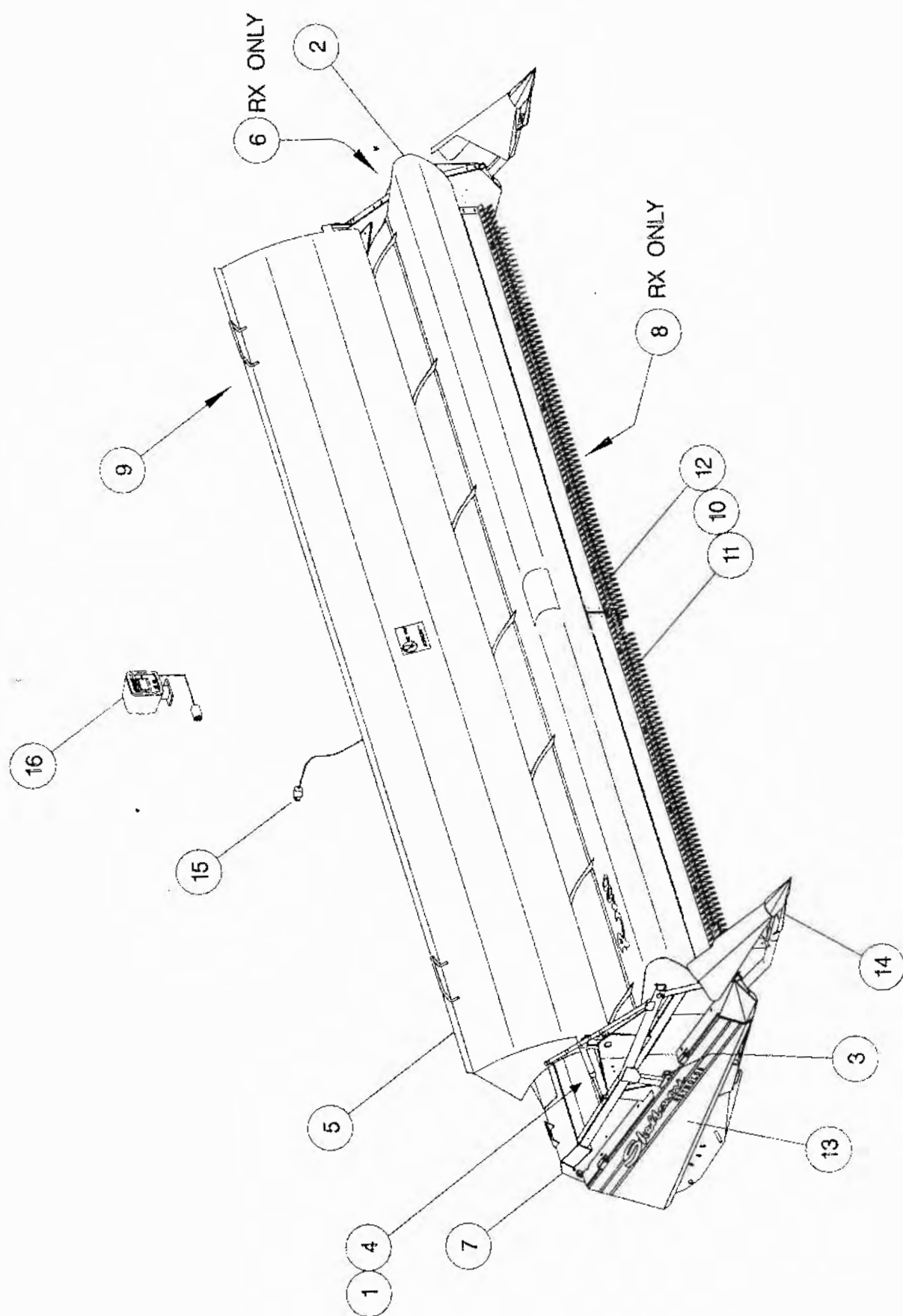
The drawings indicate the components by item numbers which you will find are repeated in the left hand side of your parts listing, and therefore referring to the correct part.

If the item within the sub-assembly is a further collection of parts (i.e. a KIT within a sub assembly) then the parts listing for this will be found just after the 1960-- -- sub-assemblies. These smaller assemblies will be in alphabetical and numerical order.



**Shelbourne Reynolds Engineering Limited**

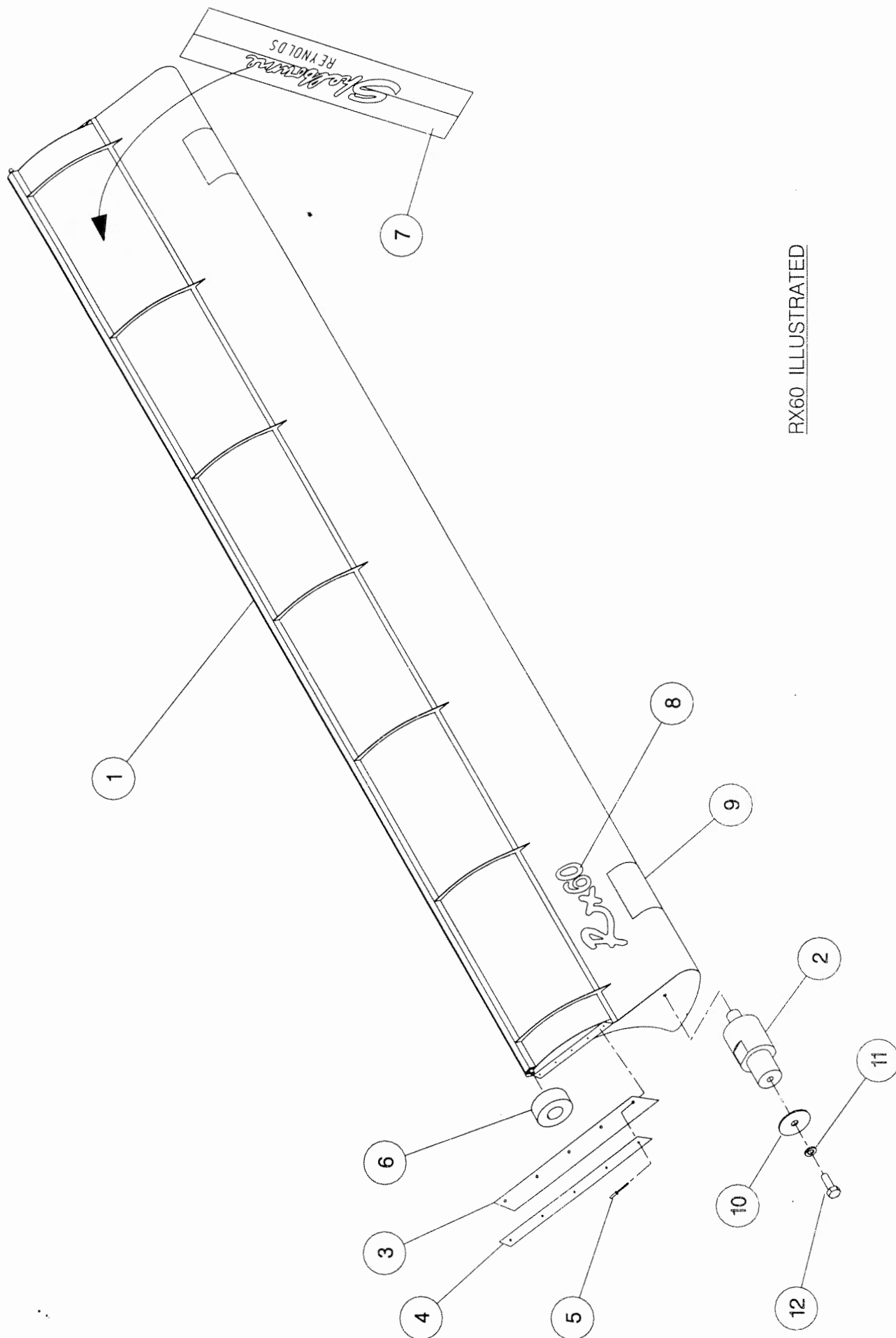
| ASSY NUMBER: 196539 12 |           |                          |     | ASSY DESCRIPTION: CX72 DIRECT SHELBOURNE HEADER(1997) |         |             |     |
|------------------------|-----------|--------------------------|-----|---|---------|-------------|-----|
| ITEM                   | PART NO   | DESCRIPTION              | QTY | ITEM  | PART NO | DESCRIPTION | QTY |
| 1                      | 196102 02 | AUGER MTG SUB            | 1   |   |         |             |     |
| 2                      | 196053 32 | ADJ CROP DEFLECTOR SUB   | 1   |   |         |             |     |
| 3                      | 196060 12 | HYDRAULICS               | 1   |   |         |             |     |
| 4                      | 196114 12 | AUGER ASSY               | 1   |   |         |             |     |
| 5                      | 196116 12 | HOOD SUB ASSY            | 1   |   |         |             |     |
| 6                      |           |                          |     |   |         |             |     |
| 7                      | 196117 12 | FRAME & PARTS            | 1   |   |         |             |     |
| 8                      |           |                          |     |   |         |             |     |
| 9                      | 196119 02 | ROTOR/AUGER DRIVE SUB    | 1   |   |         |             |     |
| 10                     | 196115 01 | ROTOR MTG SUB            | 1   |   |         |             |     |
| 11                     | 196097 14 | STRIPPING ROTOR R/H ASSY | 1   |   |         |             |     |
| 12                     | 196097 15 | STRIPPING ROTOR L/H ASSY | 1   |   |         |             |     |
| 13                     | 196118 02 | EMBLEMS AND GUARDS       | 1   |   |         |             |     |
| 14                     | 196078 01 | TORPEDO DIVIDER SUB      | 1   |   |         |             |     |
| 15                     | RDS-0005  | HEADER MONITORING KIT    | 1   |   |         |             |     |
| 16                     | RDS-0001  | COMBINE MONITOR KIT      | 1   |   |         |             |     |



**Shelbourne Reynolds Engineering Limited**

| ASSY NUMBER: |           | ASSY DESCRIPTION: ADJ. CROP DEFLECTOR SUB ASSY (CX72) |     |      |         |             |     |
|--------------|-----------|---|-----|------|---------|-------------|-----|
| ITEM         | PART NO   | DESCRIPTION   | QTY | ITEM | PART NO | DESCRIPTION | QTY |
| 1            | 192686 01 | ADJ. CROP DEFLECTOR (7.2M)                            | 1   |      |         |             |     |
| 2            | 190361 01 | PIVOT BUSH  | 2   |      |         |             |     |
| 3            | 192037 01 | RUBBER SEAL   | 2   |      |         |             |     |
| 4            | 192038 01 | CLAMP STRIP   | 2   |      |         |             |     |
| 5            | POP-0006  | POP RIVET   | 10  |      |         |             |     |
| 6            | 191642 01 | ROLLER  | 2   |      |         |             |     |
| 7            | 191981 01 | EMBLEM (SHEL. REYNOLDS)                               | 1   |      |         |             |     |
| 8            | 192735 08 | EMBLEM (CX72)   | 1   |      |         |             |     |
| 9            | 192718 01 | TRANSFER (NO STEP)                                    | 1   |      |         |             |     |
| 10           | 190119 05 | PLAIN WASHER  | 2   |      |         |             |     |
| 11           | WSH-0058  | WASHER  | 2   |      |         |             |     |
| 12           | HSS-0140  | SETSCREW  | 2   |      |         |             |     |

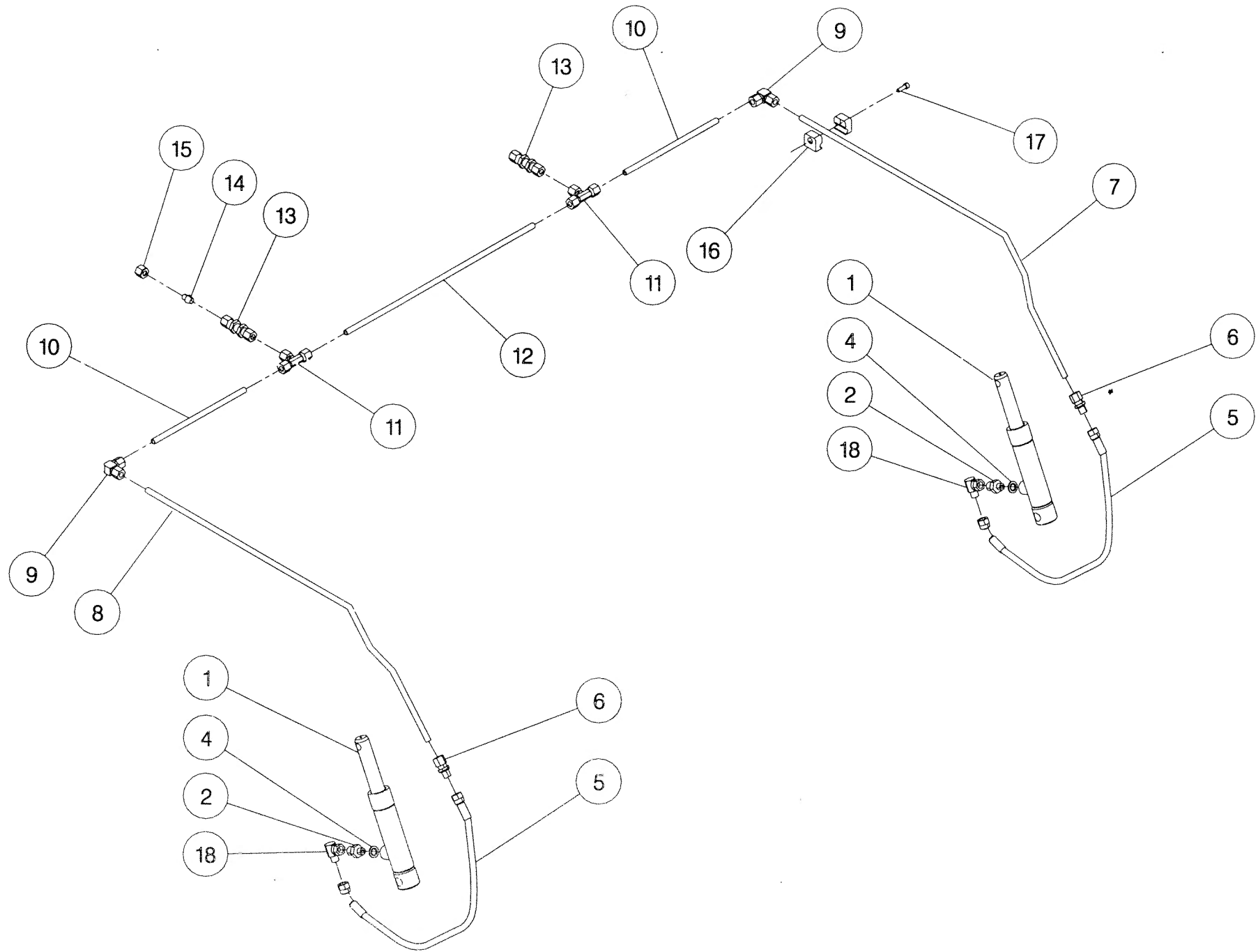




RX60 ILLUSTRATED

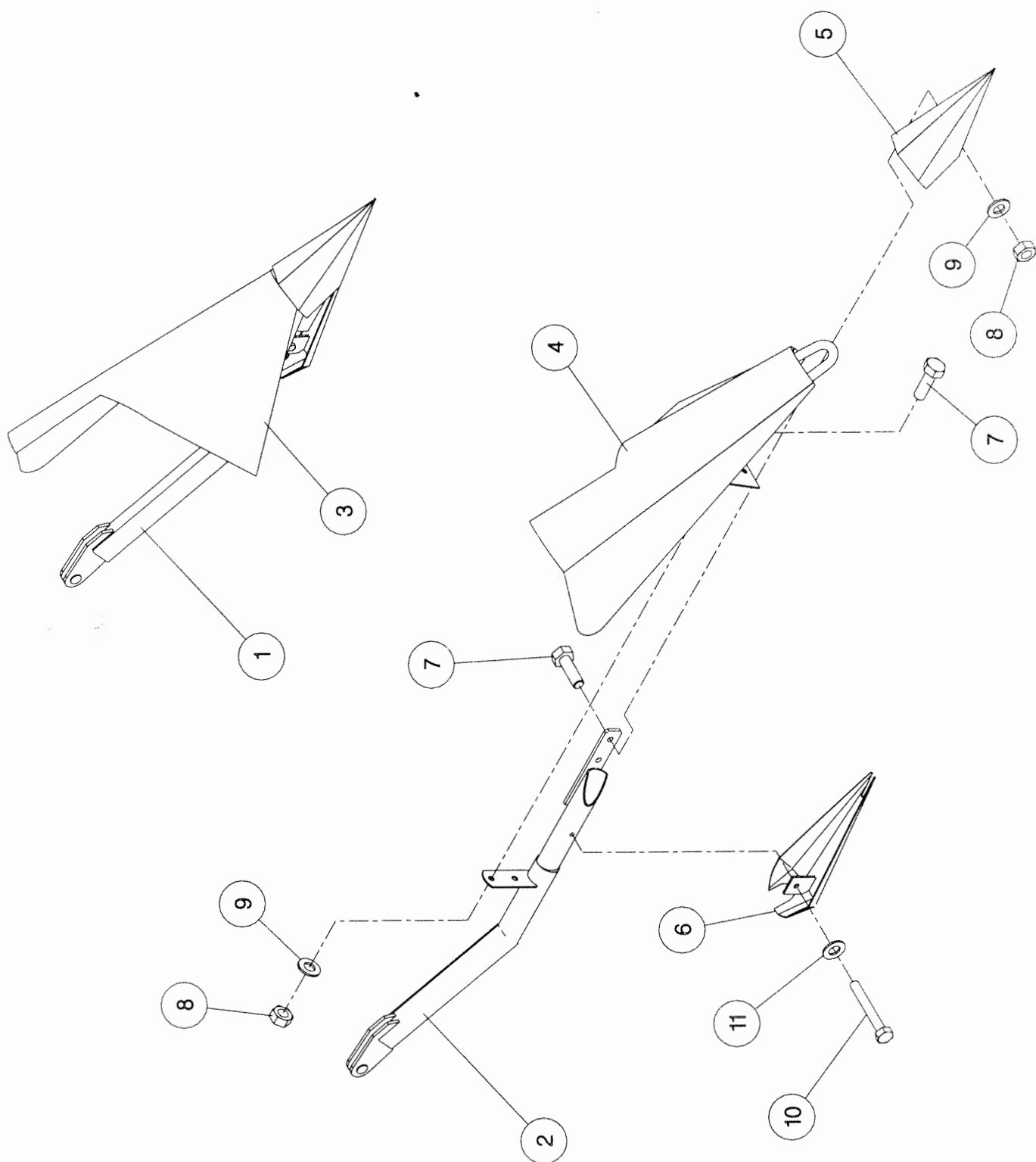
**Shelbourne Reynolds Engineering Limited**

| ASSY NUMBER: 196060 12 |           |                   |     | ASSY DESCRIPTION: HYDRAULIC CIRCUIT SUB 7.2M |         |             |     |
|------------------------|-----------|-------------------|-----|--|---------|-------------|-----|
| ITEM                   | PART NO   | DESCRIPTION       | QTY | ITEM   | PART NO | DESCRIPTION | QTY |
| 1                      | REF       | HYDRAULIC RAM     | 2   |  |         |             |     |
| 2                      | 190859 01 | HYDRAULIC FITTING | 2   |  |         |             |     |
| 3                      |           |                   |     |  |         |             |     |
| 4                      | WSH-1010  | DOWTY WASHER      | 2   |  |         |             |     |
| 5                      | HHDC03805 | HOSE              | 2   |  |         |             |     |
| 6                      | FIT-0047  | HYDRAULIC FITTING | 2   |  |         |             |     |
| 7                      | 192361 01 | SIDE PIPE LH      | 1   |  |         |             |     |
| 8                      | 192361 02 | SIDE PIPE RH      | 1   |  |         |             |     |
| 9                      | FIT-0214  | HYD FITTING       | 2   |  |         |             |     |
| 10                     | RP-102380 | STEEL PIPE        | 2   |  |         |             |     |
| 11                     | FIT-0212  | HYD FITTING       | 2   |  |         |             |     |
| 12                     | RP-102470 | STEEL PIPE        | 1   |  |         |             |     |
| 13                     | FIT-0213  | HYD FITTING       | 2   |  |         |             |     |
| 14                     | FIT-0215  | HYD PLUG FITTING  | 1   |  |         |             |     |
| 15                     | FIT-0051  | NUT               | 1   |  |         |             |     |
| 16                     | FIT-1000  | PETA CLAMPS       | 4   |  |         |             |     |
| 17                     | SCW-0089  | CAP HEAD SCREW    | 4   |  |         |             |     |
| 18                     | HALAA0303 | HYD FITTING       | 2   |  |         |             |     |



**Shelbourne Reynolds Engineering Limited**

| ASSY NUMBER: 196078 01 |           |                   |     | ASSY DESCRIPTION: TORPEDO DIVIDERS FOR RX & CX MACHINES |         |             |     |
|------------------------|-----------|-------------------|-----|---|---------|-------------|-----|
| ITEM                   | PART NO   | DESCRIPTION       | QTY | ITEM  | PART NO | DESCRIPTION | QTY |
| 1                      | 192533 01 | DIVIDER ARM LH    | 1   |   |         |             |     |
| 2                      | 192533 02 | DIVIDER ARM RH    | 1   |   |         |             |     |
| 3                      | 192537 01 | DIVIDING PLATE LH | 1   |   |         |             |     |
| 4                      | 192537 02 | DIVIDING PLATE RH | 1   |   |         |             |     |
| 5                      | 191770 01 | NOSE CONE         | 2   |   |         |             |     |
| 6                      | 191862 01 | SHOE              | 2   |   |         |             |     |
| 7                      | HSS-0191  | SETSCREW          | 8   |   |         |             |     |
| 8                      | NUT-0265  | NUT               | 8   |   |         |             |     |
| 9                      | WSH-0015  | WASHER            | 8   |   |         |             |     |
| 10                     | HSS-0155  | BOLT              | 2   |   |         |             |     |
| 11                     | WSH-0058  | WASHER            | 2   |   |         |             |     |





**Shelbourne Reynolds Engineering Limited**

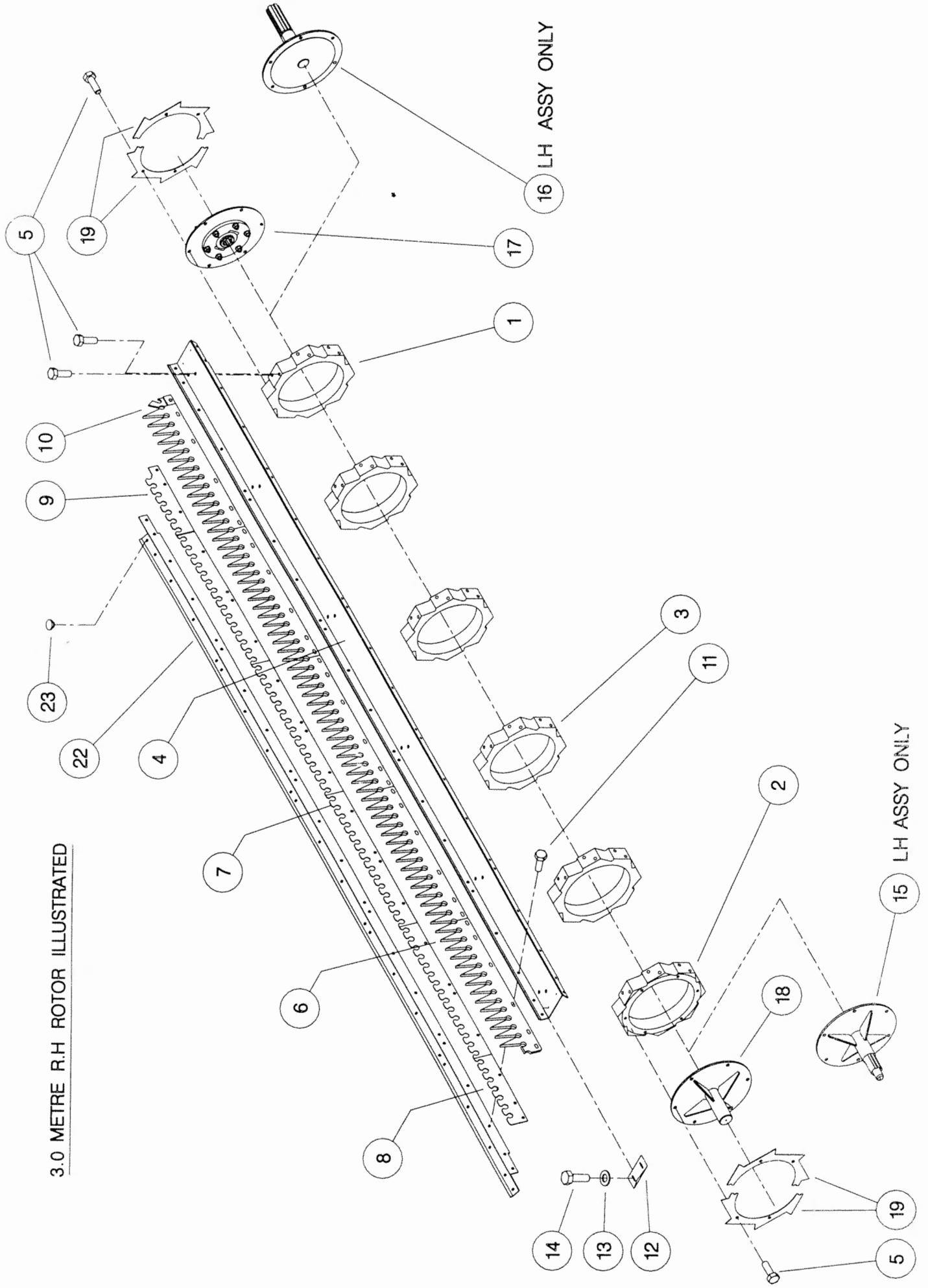
| ASSY NUMBER: 196097 14 |           |                           |     | ASSY DESCRIPTION: STRIPPING ROTOR ASSY (R/H) 3.6m |         |             |     |
|------------------------|-----------|---------------------------|-----|---|---------|-------------|-----|
| ITEM                   | PART NO   | DESCRIPTION               | QTY | ITEM  | PART NO | DESCRIPTION | QTY |
| 1                      | 192892 01 | OUTER HUB CASTING L. H.   | 1   |   |         |             |     |
| 2                      | 192892 02 | OUTER HUB CASTING R. H.   | 1   |   |         |             |     |
| 3                      | 192892 03 | INNER HUB CASTING         | 5   |   |         |             |     |
| 4                      | 192890 03 | ROTOR SECTION 3.6M        | 7   |   |         |             |     |
| 5                      | HSSG10204 | SET SCREW                 | 124 |   |         |             |     |
| 6                      | 191968 02 | ELITE ELEMENT             | 48  |   |         |             |     |
| OR                     | 193087 01 | ELITE ELEMENT(SLOTTED)    | 48  |   |         |             |     |
| 7                      | 192291 01 | ANTI WEAR STRIP CTR.      | 40  |   |         |             |     |
| OR                     | 192291 07 | S-TYPE STRIP CTR          | 40  |   |         |             |     |
| 8                      | 192291 02 | ANTI WEAR STRIP END       | 8   |   |         |             |     |
| OR                     | 192291 08 | S-TYPE STRIP END          | 8   |   |         |             |     |
| 9                      | 192291 03 | ANTI WEAR STRIP CTR END   | 8   |   |         |             |     |
| OR                     | 192291 09 | S-TYPE STRIP CTR END      | 8   |   |         |             |     |
| 10                     | 191865 02 | CENTRE FINGER (RH)        | 8   |   |         |             |     |
| 11                     | HSSF08204 | SET SCREW                 | 208 |   |         |             |     |
| 12                     | 192679 01 | ANTI WRAP PLATE           | 8   |   |         |             |     |
| 13                     | WSH-1034  | PENNY WASHER              | 16  |   |         |             |     |
| 14                     | SCW-5180  | SELF TAP. SCREW           | 16  |   |         |             |     |
| 15                     |           |                           |     |   |         |             |     |
| 16                     |           |                           |     |   |         |             |     |
| 17                     | KIT-00976 | BALL COUPLING KIT         | 1   |   |         |             |     |
| 18                     | 192899 01 | IDLE SHAFT W/ASSY         | 1   |   |         |             |     |
| 19                     | 192959 01 | OUTER CLAMP RING (HALF)   | 4   |   |         |             |     |
| 20                     |           |                           |     |   |         |             |     |
| 21                     |           |                           |     |   |         |             |     |
| 22                     | 193117 03 | ROTOR SECTION 3.6M (HOLE) | 1   |   |         |             |     |
| 23                     | BPG-00200 | BODY PLUG                 | 1   |   |         |             |     |

**Shelbourne Reynolds Engineering Limited**

| ASSY NUMBER: 196097 15 |           |                         |     | ASSY DESCRIPTION: STRIPPING ROTOR ASSY (L/H) 3.6m |         |             |     |
|------------------------|-----------|-------------------------|-----|---|---------|-------------|-----|
| ITEM                   | PART NO   | DESCRIPTION             | QTY | ITEM  | PART NO | DESCRIPTION | QTY |
| 1                      | 192892 01 | OUTER HUB CASTING L. H. | 1   |   |         |             |     |
| 2                      | 192892 02 | OUTER HUB CASTING R. H. | 1   |   |         |             |     |
| 3                      | 192892 03 | INNER HUB CASTING       | 5   |   |         |             |     |
| 4                      | 192890 03 | ROTOR SECTION 3.6M      | 8   |   |         |             |     |
| 5                      | HSSG10204 | SET SCREW               | 124 |   |         |             |     |
| 6                      | 191968 02 | ELITE ELEMENT           | 48  |   |         |             |     |
| OR                     | 193087 01 | ELITE ELEMENT(SLOTTED)  | 48  |   |         |             |     |
| 7                      | 192291 01 | ANTI WEAR STRIP CTR.    | 40  |   |         |             |     |
| OR                     | 192291 07 | S-TYPE STRIP CTR        | 40  |   |         |             |     |
| 8                      | 192291 02 | ANTI WEAR STRIP END     | 8   |   |         |             |     |
| OR                     | 192291 08 | S-TYPE STRIP END        | 8   |   |         |             |     |
| 9                      | 192291 03 | ANTI WEAR STRIP CTR END | 8   |   |         |             |     |
| OR                     | 192291 09 | S-TYPE STRIP CTR END    | 8   |   |         |             |     |
| 10                     | 191865 01 | CENTRE FINGER (LH)      | 8   |   |         |             |     |
| 11                     | HSSF08204 | SET SCREW               | 208 |   |         |             |     |
| 12                     | 192679 01 | ANTI WRAP PLATE         | 8   |   |         |             |     |
| 13                     | WSH-1034  | PENNY WASHER            | 16  |   |         |             |     |
| 14                     | SCW-5180  | SELF TAP. SCREW         | 16  |   |         |             |     |
| 15                     | 193103 01 | CENTRE SHAFT W/ASSY     | 1   |   |         |             |     |
| 16                     | 192897 01 | DRIVE SHAFT W/ASSY      | 1   |   |         |             |     |
| 17                     |           |                         |     |   |         |             |     |
| 18                     |           |                         |     |   |         |             |     |
| 19                     | 192959 01 | OUTER CLAMP RING (HALF) | 4   |   |         |             |     |
| 20                     |           |                         |     |   |         |             |     |
| 21                     |           |                         |     |   |         |             |     |

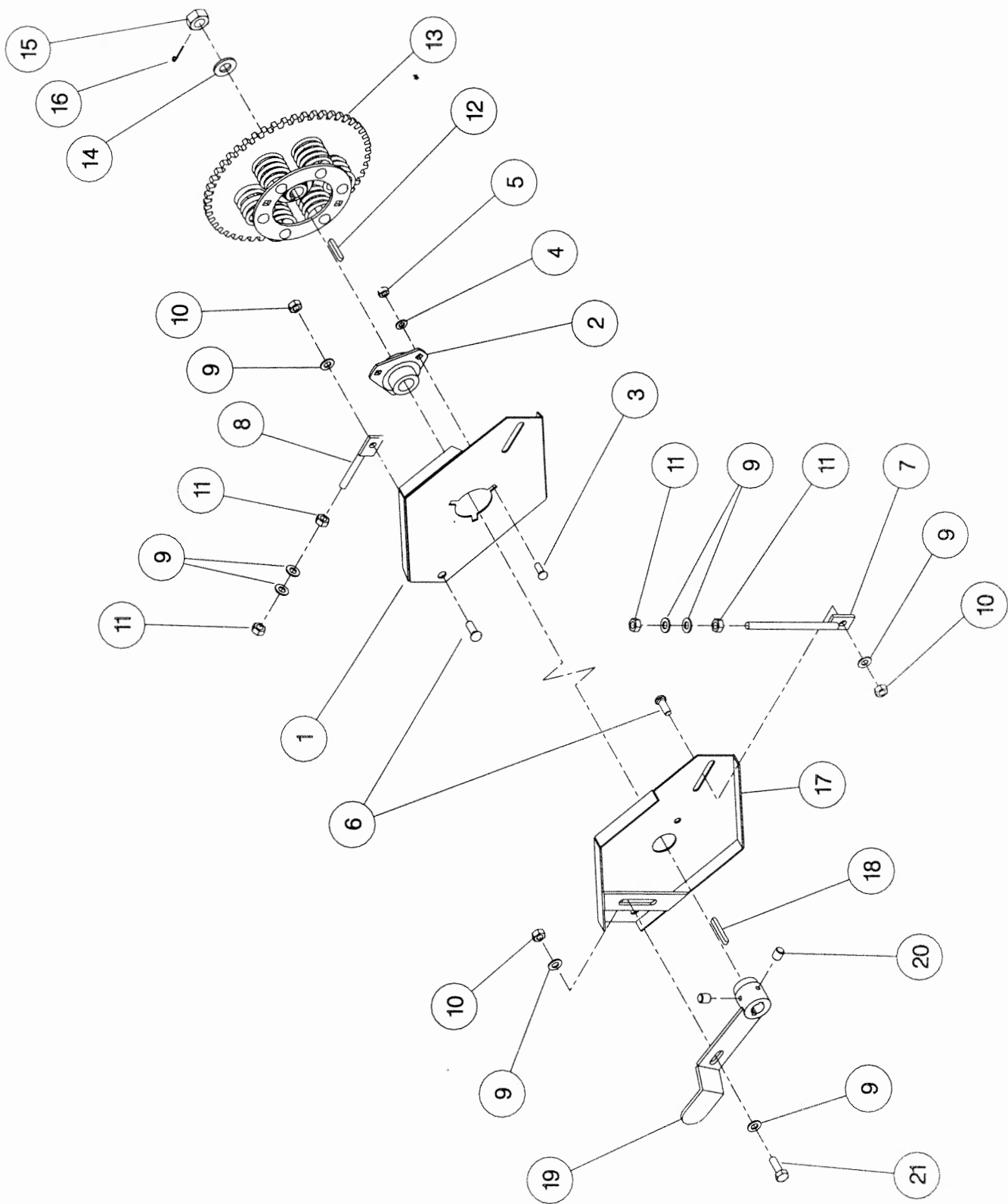


# 3.0 METRE R.H ROTOR ILLUSTRATED



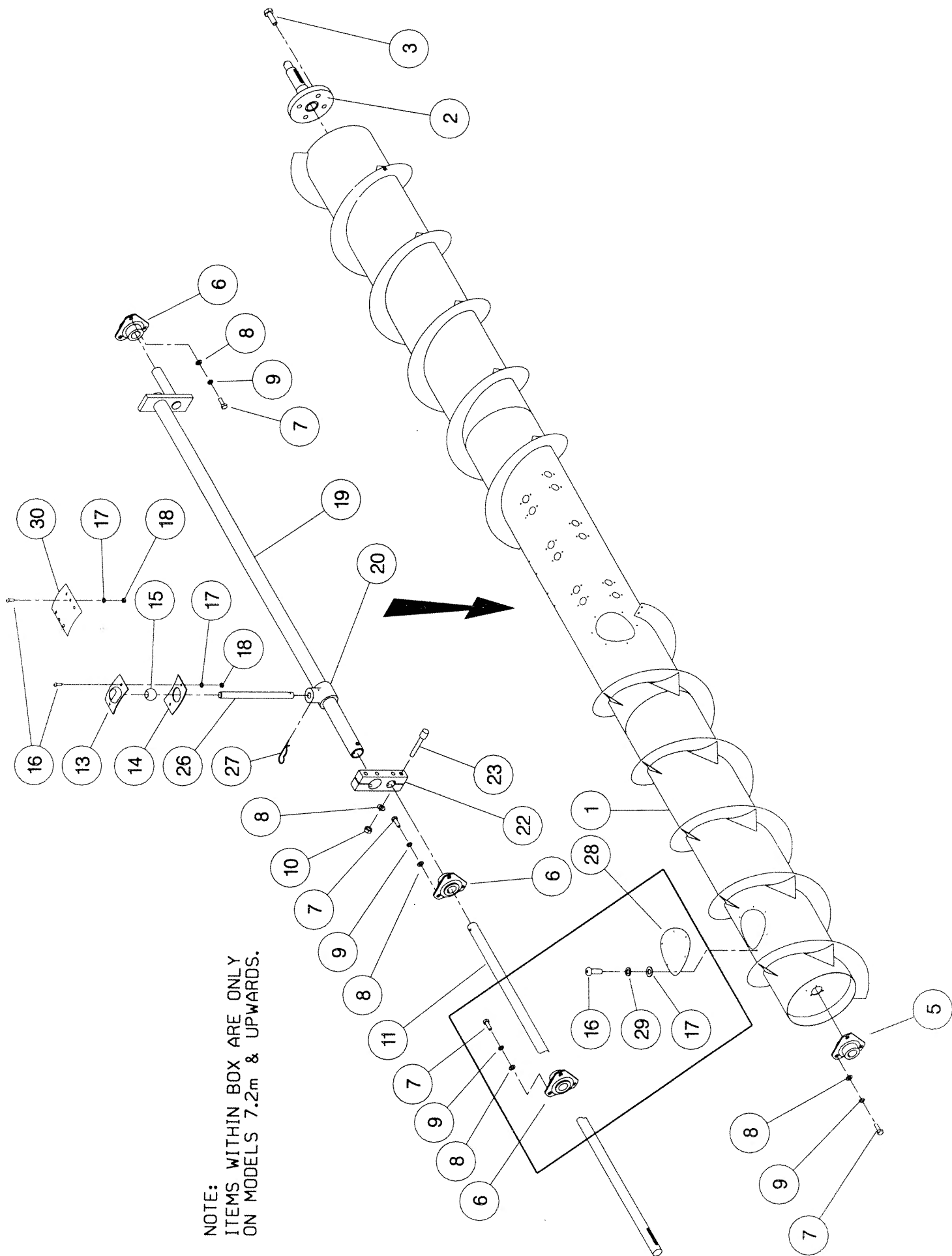
**Shelbourne Reynolds Engineering Limited**

| ASSY NUMBER: 196102 02 |           |   |     | ASSY DESCRIPTION: AUGER MOUNTING/DRIVE KIT (CX) 1996 |         |             |     |
|------------------------|-----------|---|-----|--|---------|-------------|-----|
| ITEM                   | PART NO   | DESCRIPTION                                     | QTY | ITEM   | PART NO | DESCRIPTION | QTY |
| 1                      | 200035 03 | SUPPORT PLATE L. H.                             | 1   |  |         |             |     |
| 2                      | BRG-0240  | BEARING   | 1   |  |         |             |     |
| 3                      | BLT-3745  | COACH BOLT                                      | 3   |  |         |             |     |
| 4                      | WSH-0015  | PLAIN WASHER                                    | 3   |  |         |             |     |
| 5                      | NUT-0265  | NYLOC NUT                                       | 3   |  |         |             |     |
| 6                      | BLT-3790  | COACH BOLT                                      | 4   |  |         |             |     |
| 7                      | 192636 06 | VERTICAL ADJUSTER                               | 2   |  |         |             |     |
| 8                      | 192636 01 | HORIZONTAL ADJUSTER                             | 2   |  |         |             |     |
| 9                      | WSH-0018  | PLAIN WASHER                                    | 14  |  |         |             |     |
| 10                     | NUT-0269  | NYLOC NUT                                       | 5   |  |         |             |     |
| 11                     | NUT-0170  | PLAIN NUT                                       | 8   |  |         |             |     |
| 12                     | K0807050  | KEY   | 1   |  |         |             |     |
| 13                     | KIT-00109 | AUGER SLIP CLUTCH<br>(SEE PARTS LIST KIT-00109) | 1   |  |         |             |     |
| 14                     | WSH-0030  | PLAIN WASHER                                    | 1   |  |         |             |     |
| 15                     | NUT-0580  | CASTLE NUT                                      | 1   |  |         |             |     |
| 16                     | PIN-1150  | SPLIT PIN                                       | 1   |  |         |             |     |
| 17                     | 200038 01 | SUPPORT PLATE R. H.                             | 1   |  |         |             |     |
| 18                     | K0807060  | KEY   | 1   |  |         |             |     |
| 19                     | 200120 03 | ADJUSTER ASSY                                   | 1   |  |         |             |     |
| 20                     | SCW-4535  | GRUB SCREW                                      | 2   |  |         |             |     |
| 21                     | HSS-0241  | SET SCREW                                       | 1   |  |         |             |     |



**Shelbourne Reynolds Engineering Limited**

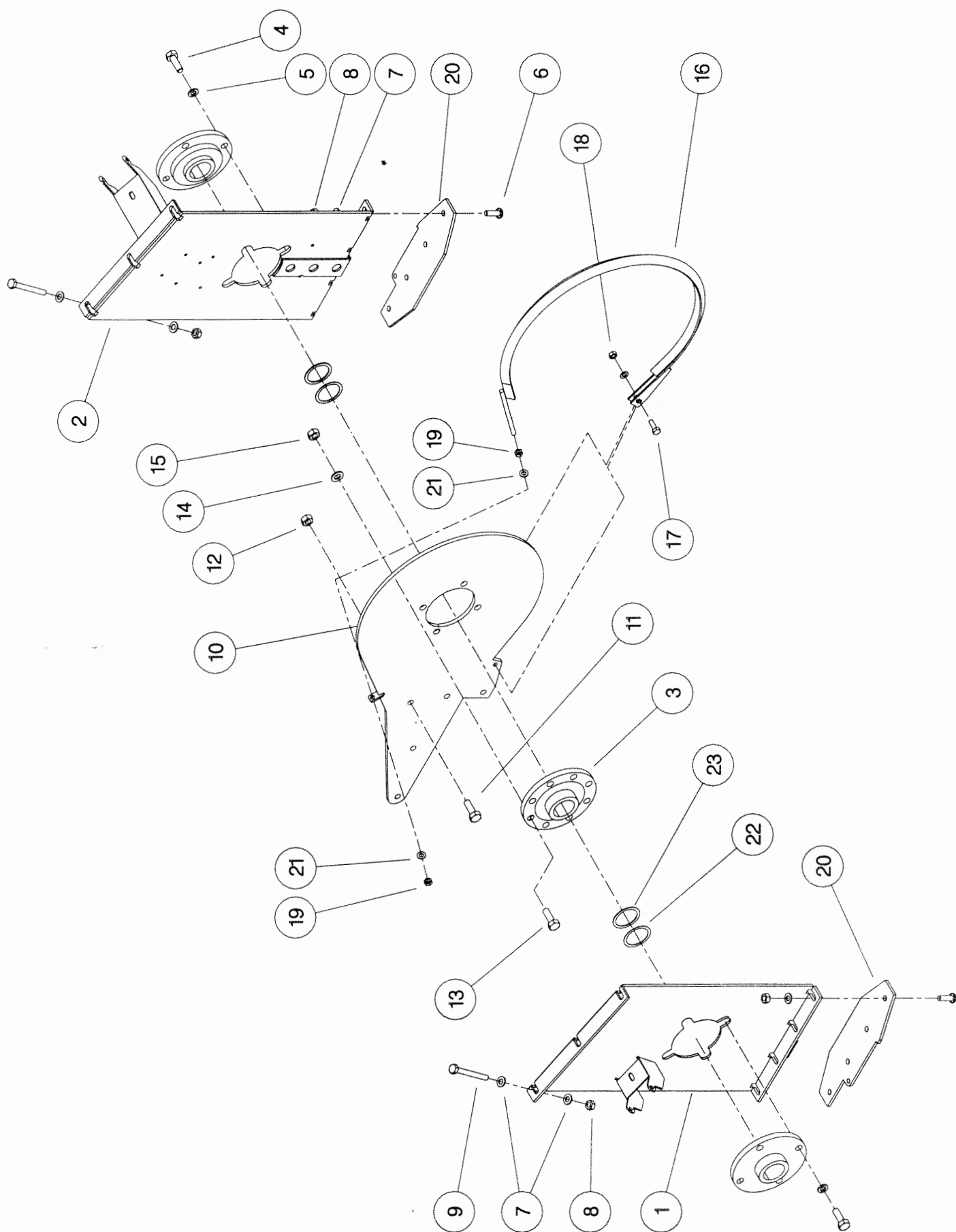
| ASSY NUMBER: 196114 12 |           |                            |     | ASSY DESCRIPTION: AUGER ASSY 7.2M (RET. FIN/LARGE DIA. ) |           |                     |     |
|------------------------|-----------|----------------------------|-----|--|-----------|---------------------|-----|
| ITEM                   | PART NO   | DESCRIPTION                | QTY | ITEM   | PART NO   | DESCRIPTION         | QTY |
| 1                      | 193210 01 | AUGER W. ASSY.             | 1   | 27   | AUG-03000 | HAIRPIN COTTER      |     |
| 2                      | 192011 01 | AUGER DRIVE SHAFT          | 1   |  |           | (16 FINGERS OPTION) | 16  |
| 3                      | HSSF12204 | SET SCREW                  | 4   | OR   |           | (20 FINGERS OPTION) | 20  |
| 4                      |           |                            |     | OR   |           | (24 FINGERS OPTION) | 24  |
| 5                      | BRG-2020  | BEARING                    | 1   | 28   | 193203 01 | COVER PLATE         | 3   |
| 6                      | BRG-0240  | BEARING                    | 3   | 29   | WSH-0056  | SPRING WASHER       | 18  |
| 7                      | HSS-0191  | SET SCREW                  | 12  | 30   | 190735 01 | BLANKING PLATE      |     |
| 8                      | WSH-0015  | PLAIN WASHER               | 16  |  |           | (16 FINGERS OPTION) | 8   |
| 9                      | WSH-0061  | SPRING WASHER              | 12  | OR   |           | (20 FINGERS OPTION) | 4   |
| 10                     | NUT-0265  | NYLOC NUT                  | 4   | OR   |           | (24 FINGERS OPTION) | 0   |
| 11                     | 192363 03 | AUGER SHAFT                | 1   | 31   |           |                     |     |
| 12                     |           |                            |     | 32   |           |                     |     |
| 13                     | AUG-01000 | UPPER FINGER PL. (CONCAVE) |     | 33   |           |                     |     |
|                        |           | (16 FINGERS OPTION)        | 16  | 34   |           |                     |     |
| OR                     |           | (20 FINGERS OPTION)        | 20  | 35   |           |                     |     |
| OR                     |           | (24 FINGERS OPTION)        | 24  | 36   |           |                     |     |
| 14                     | AUG-01500 | LOWER FINGER PL. (CONVEX)  |     | 37   |           |                     |     |
|                        |           | (16 FINGERS OPTION)        | 16  |  |           |                     |     |
| OR                     |           | (20 FINGERS OPTION)        | 20  |  |           |                     |     |
| OR                     |           | (24 FINGERS OPTION)        | 24  |  |           |                     |     |
| 15                     | AUG-02000 | FINGER GUIDE (BALL)        |     |  |           |                     |     |
|                        |           | (16 FINGERS OPTION)        | 16  |  |           |                     |     |
| OR                     |           | (20 FINGERS OPTION)        | 20  |  |           |                     |     |
| OR                     |           | (24 FINGERS OPTION)        | 24  |  |           |                     |     |
| 16                     | SCW-4960  | BUTT. HD. SKT. SCREW       | 66  |  |           |                     |     |
| 17                     | WSH-0009  | PLAIN WASHER               | 66  |  |           |                     |     |
| 18                     | NUT-0260  | NYLOC NUT                  | 48  |  |           |                     |     |
| 19                     | 192368 01 | AUGER CRANK                | 1   |  |           |                     |     |
| 20                     | AUG-02500 | FINGER HOLDER              | 24  |  |           |                     |     |
| 21                     |           |                            |     |  |           |                     |     |
| 22                     | 192364 01 | AUGER CLAMP                | 1   |  |           |                     |     |
| 23                     | SCCA10412 | CAP HD SKT SCREW           | 4   |  |           |                     |     |
| 24                     |           |                            |     |  |           |                     |     |
| 25                     |           |                            |     |  |           |                     |     |
| 26                     | 192310 01 | FINGER                     |     |  |           |                     |     |
|                        |           | (16 FINGERS OPTION)        | 16  |  |           |                     |     |
| OR                     |           | (20 FINGERS OPTION)        | 20  |  |           |                     |     |
| OR                     |           | (24 FINGERS OPTION)        | 24  |  |           |                     |     |



NOTE:  
ITEMS WITHIN BOX ARE ONLY  
ON MODELS 7.2m & UPWARDS.

**Shelbourne Reynolds Engineering Limited**

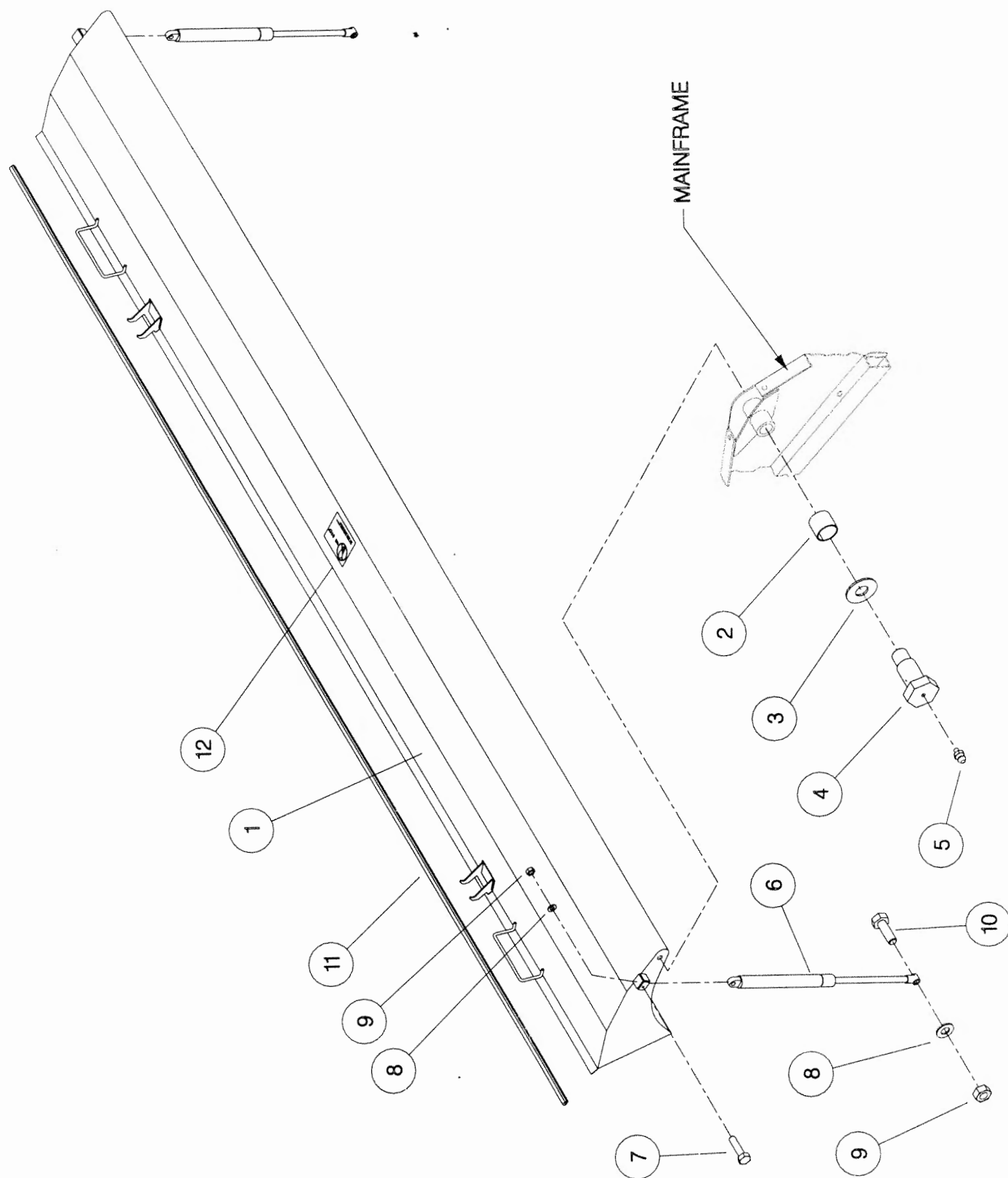
| ASSY NUMBER: |           | ASSY DESCRIPTION: CX RANGE RTR MTG SUB ASSY (1997) |     |      |         |             |     |
|--------------|-----------|--|-----|------|---------|-------------|-----|
| ITEM         | PART NO   | DESCRIPTION  | QTY | ITEM | PART NO | DESCRIPTION | QTY |
| 1            | 193227 01 | ROTOR MTG PLATE R. H                               | 1   |      |         |             |     |
| 2            | 193015 01 | ROTOR MTG PLATE L. H                               | 1   |      |         |             |     |
| 3            | BRG-3275  | BEARING  | 3   |      |         |             |     |
| 4            | HSS-0235  | SETSCREW   | 8   |      |         |             |     |
| 5            | WSH-0065  | WASHER   | 8   |      |         |             |     |
| 6            | SCW-0515  | SCREW  | 8   |      |         |             |     |
| 7            | WSH-0015  | WASHER   | 20  |      |         |             |     |
| 8            | NUT-0265  | NUT  | 14  |      |         |             |     |
| 9            | BLTA10520 | BOLT   | 6   |      |         |             |     |
| 10           | 193225 01 | DIVISION PLATE                                     | 1   |      |         |             |     |
| 11           | BLTA12290 | BOLT5  |     |      |         |             |     |
| 12           | NUTA07120 | AERO-TIGHT NUT                                     | 5   |      |         |             |     |
| 13           | HSS-0241  | SETSCREW   | 4   |      |         |             |     |
| 14           | WSH-0018  | WASHER   | 4   |      |         |             |     |
| 15           | NUT-0269  | NUT  | 4   |      |         |             |     |
| 16           | 192502 01 | VEE STRIP ASSY                                     | 1   |      |         |             |     |
| 17           | HSS-0140  | BOLT   | 1   |      |         |             |     |
| 18           | NUT-0263  | NYLOC NUT  | 1   |      |         |             |     |
| 19           | NUT-0164  | NUT PLAIN  | 2   |      |         |             |     |
| 20           | 193220 01 | DIVIDING PLATE                                     | 2   |      |         |             |     |
| 21           | WSH-0012  | WASHER   | 3   |      |         |             |     |
| 22           | 192876 01 | SHIM (1mm THICK)                                   |     |      |         |             |     |
| 23           | 192876 02 | SHIM (2mm THICK)                                   |     |      |         |             |     |



**Shelbourne Reynolds Engineering Limited**

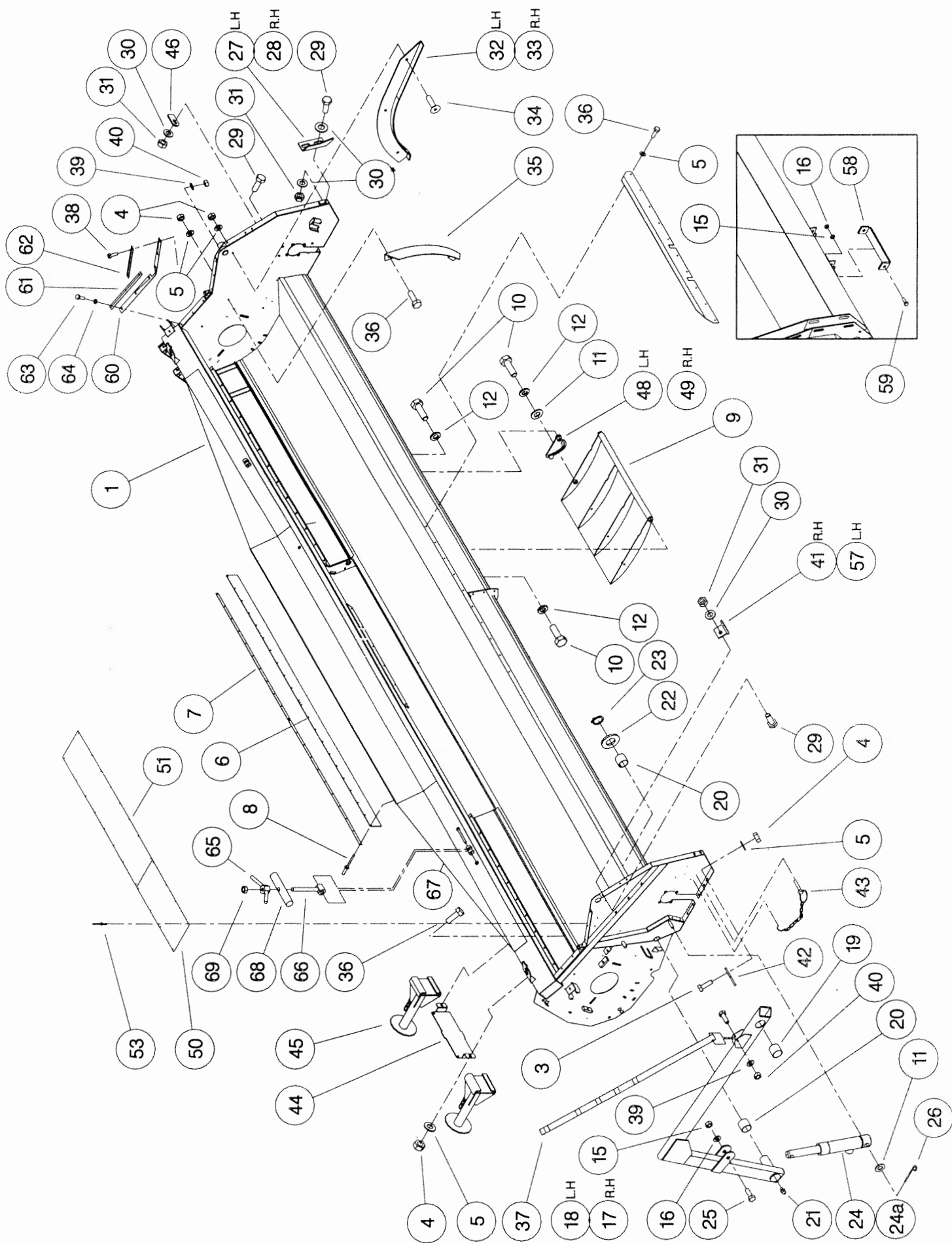
| ASSY NUMBER: 196116 12 |           |                    |      | ASSY DESCRIPTION: TOP DOOR COWL ASSY (CX72) 1997 |         |             |     |
|------------------------|-----------|--------------------|------|--|---------|-------------|-----|
| ITEM                   | PART NO   | DESCRIPTION        | QTY  | ITEM   | PART NO | DESCRIPTION | QTY |
| 1                      | 193255 01 | COWL ASSY (CX72)   | 1    |  |         |             |     |
| 2                      | BSH-3030  | BUSH               | 2    |  |         |             |     |
| 3                      | 192813 01 | LARGE WASHER       | 2    |  |         |             |     |
| 4                      | 192812 01 | COWL PIN           | 2    |  |         |             |     |
| 5                      | NIP-0001  | GREASE ZERK        | 2    |  |         |             |     |
| 6                      | GSTA14406 | GAS STRUTT         | 2    |  |         |             |     |
| 7                      | BLTA10410 | BOLT               | 2    |  |         |             |     |
| 8                      | WSH-0015  | WASHER             | 4    |  |         |             |     |
| 9                      | NUT-0265  | NUT                | 4    |  |         |             |     |
| 10                     | BLTA10290 | BOLT               | 2    |  |         |             |     |
| 11                     | EDS-11600 | SEAL STRIP         | 7.2m |  |         |             |     |
| 12                     | 192718 01 | TRANSFER (NO STEP) | 1    |  |         |             |     |





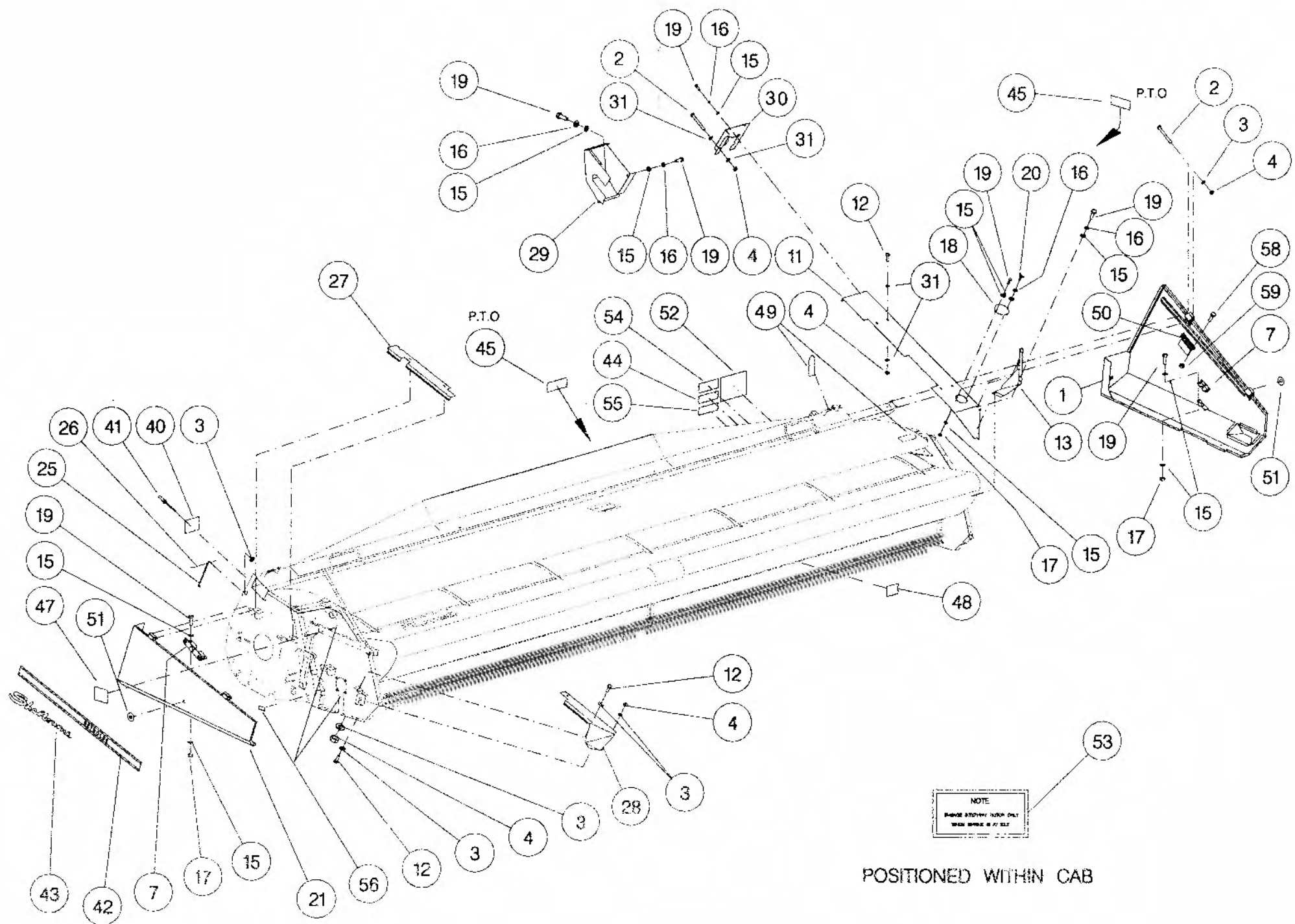
**Shelbourne Reynolds Engineering Limited**

| ASSY NUMBER: 196117 12 |           |                           |     | ASSY DESCRIPTION: FRAME & PARTS SUB (CX72-1997) |           |                         |     |
|------------------------|-----------|---------------------------|-----|---|-----------|-------------------------|-----|
| ITEM                   | PART NO   | DESCRIPTION               | QTY | ITEM  | PART NO   | DESCRIPTION             | QTY |
| 1                      | 193275 01 | CX72 MAIN FRAME ASSY      | 1   | 38  | HSS-0092  | SETSCREW                | 1   |
| 2                      |           |                           |     | 39  | WSH-0009  | PLAIN WASHER            | 7   |
| 3                      | BLT-4710  | COACH BOLT                | 2   | 40  | NUT-0260  | NYLOC NUT               | 7   |
| 4                      | NUT-0263  | NUT                       | 24  | 41  | 192484 01 | SUPPORT BRACKET         | 1   |
| 5                      | WSH-0012  | WASHER                    | 34  | 42  | 192543 01 | CROP DIVIDER ADJ. PLATE | 2   |
| 6                      | 191340 01 | RUBBER SEAL               | 1   | 43  | PIN-01790 | LYNCH PIN & CHAIN       | 2   |
| 7                      | 191339 01 | CLAMP STRIP               | 2   | 44  | 193221 01 | HEADER STAND BRACKET    | 1   |
| 8                      | POP-0006  | POP RIVET                 | 22  | 45  | 193222 01 | HEADER FRONT STAND      | 2   |
| 9                      | 193219 01 | SKID                      | 4   | 46  | 192550 01 | NOSE ARM STOP PLATE     | 1   |
| 10                     | HSS-0316  | SET SCREW                 | 24  | 47  |           |                         |     |
| 11                     | WSH-0024  | WASHER                    | 10  | 48  | 192954 01 | SKID ADJUSTER PLATE LH  | 4   |
| 12                     | WSH-0070  | WASHER                    | 24  | 49  | 192954 02 | SKID ADJUSTER PLATE RH  | 4   |
| 13                     |           |                           |     | 50  |           |                         |     |
| 14                     |           |                           |     | 51  | 192754 02 | SLIP PLATES             | 6   |
| 15                     | NUT-0269  | NUT                       | 8   | 52  | 192755 01 | ANTI-SPILL STRIP        | 1   |
| 16                     | WSH-0018  | WASHER                    | 8   | 53  | POP-0007  | POP RIVET               | 96  |
| 17                     | 191259 02 | ADJ COWL SUPPORT ARM R. H | 1   | 54  |           |                         |     |
| 18                     | 191259 01 | ADJ COWL SUPPORT ARM L. H | 1   | 55  |           |                         |     |
| 19                     | BSH-3030  | BUSH                      | 2   | 56  |           |                         |     |
| 20                     | BSH-3070  | BUSH                      | 4   | 57  | 192484 02 | SUPPORT BRACKET LH      | 1   |
| 21                     | NIP-0001  | GREASE ZERK               | 2   | 58  | 193214 01 | STRAP                   | 2   |
| 22                     | WSH-1547  | WASHER                    | 2   | 59  | HSS-0238  | SETCREW                 | 4   |
| 23                     | CIR-1150  | CIRCLIP                   | 2   | 60  | 193235 01 | RUBBER SEAL             | 2   |
| 24                     | 192960 01 | HYDRAULIC RAM             | 2   | 61  | 193232 01 | SEAL CLAMP              | 2   |
| 24a                    | RMSK00010 | SEAL KIT                  |     | 62  | 193233 01 | SEAL CLAMP              | 2   |
| 25                     | HSS-0260  | SET SCREW                 | 2   | 63  | HSS-0056  | SETSCREW                | 12  |
| 26                     | PIN-1150  | SPLIT PIN                 | 2   | 64  | WSH-0056  | WASHER                  | 6   |
| 27                     | 192193 01 | ADJ COWL STOP L. H        | 1   | 65  | 193244 01 | RETAINING NUT           | 2   |
| 28                     | 192193 02 | ADJ COWL STOP R. H        | 1   | 66  | 193248 01 | RETAINING SCREW         | 2   |
| 29                     | HSS-0194  | SET SCREW                 | 7   | 67  | BLTA12380 | BOLT                    | 2   |
| 30                     | WSH-0015  | WASHER                    | 11  | 68  | 193251 01 | RETAINING BAR           | 2   |
| 31                     | NUT-0265  | NUT                       | 7   | 69  | NUT-0170  | PLAIN NUT               | 2   |
| 32                     | 192442 01 | RUNNER ASSY L. H          | 1   |   |           |                         |     |
| 33                     | 192442 02 | RUNNER ASSY R. H          | 1   |   |           |                         |     |
| 34                     | SCW-1735  | SCREW                     | 6   |   |           |                         |     |
| 35                     | 192304 01 | AUGER END DEFLECTOR       | 2   |   |           |                         |     |
| 36                     | HSS-0140  | SET SCREW                 | 16  |   |           |                         |     |
| 37                     | 192494 01 | INDICATOR ROD             | 1   |   |           |                         |     |



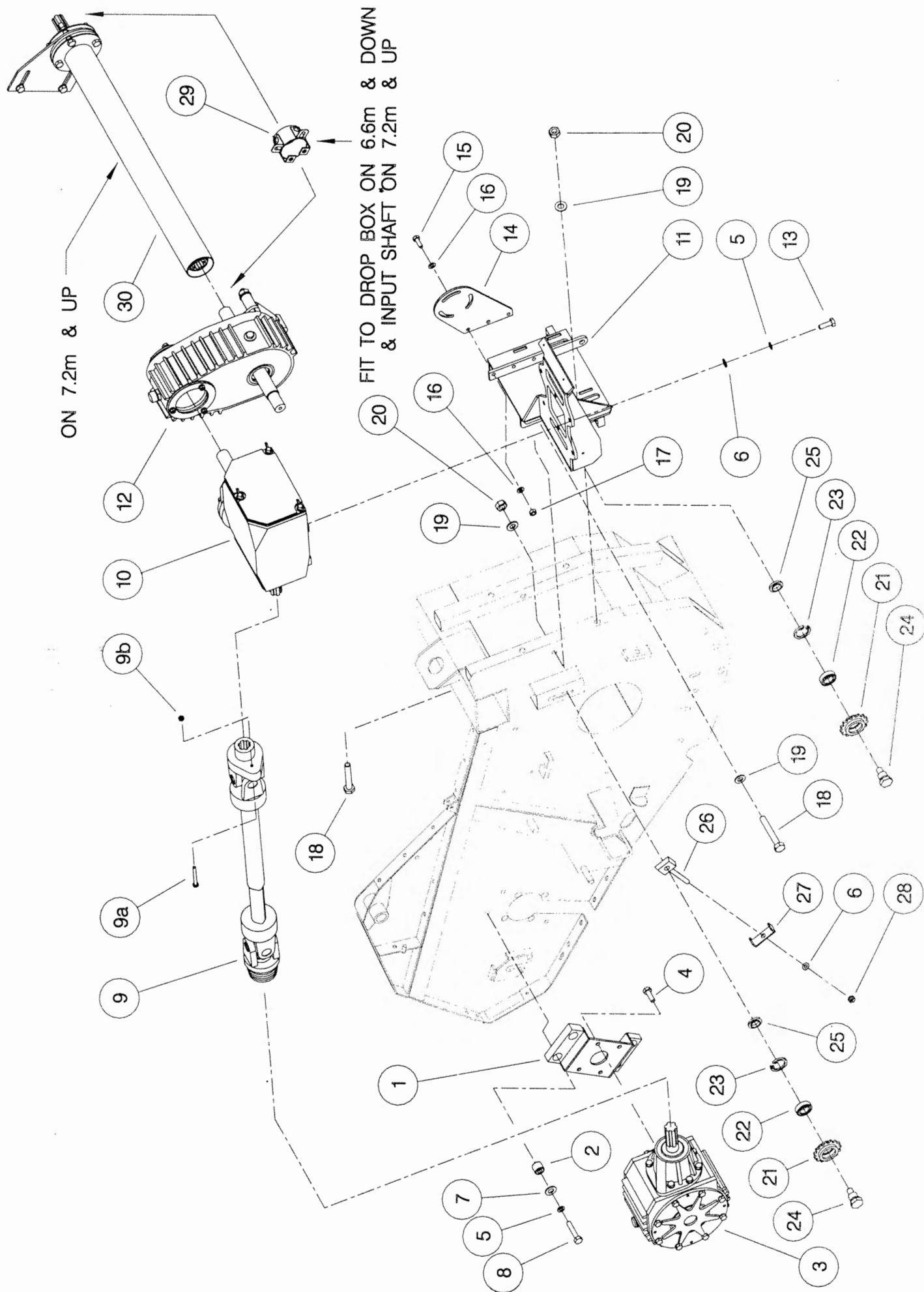
**Shelbourne Reynolds Engineering Limited**

| ASSY NUMBER: 196118 02 |           |                         |     | ASSY DESCRIPTION: CX EMBLEMS AND GUARDS SUB (1997) |           |                              |     |
|------------------------|-----------|-------------------------|-----|--|-----------|------------------------------|-----|
| ITEM                   | PART NO   | DESCRIPTION             | QTY | ITEM   | PART NO   | DESCRIPTION                  | QTY |
| 1                      | 193252 01 | L. H. GUARD             | 1   | 39   |           |                              |     |
| 2                      | BLT-2165  | BOLT                    | 5   | 40   | 191359 01 | IDENTIFICATION PLATE         | 1   |
| 3                      | WSH-0012  | PLAIN WASHER            | 25  | 41   | POP-0006  | POP RIVET                    | 4   |
| 4                      | NUT-0263  | NYLOC NUT               | 15  | 42   | 191983 01 | EMBLEM (STRIPES & REYNOLDS)  | 2   |
| 5                      |           |                         |     | 43   | 191982 01 | EMBLEM (SHELBOURNE)          | 2   |
| 6                      |           |                         |     | 44   | 127075 10 | EMBLEM (IMPORTANT)           | 1   |
| 7                      | LTC-00040 | SLAM LATCH              | 2   | 45   | 127075 12 | EMBLEM (GREASE 10 HOURS)     | 2   |
| 8                      |           |                         |     | 46   |           |                              |     |
| 9                      |           |                         |     | 47   | 190702 03 | EMBLEM (DANGER, KEEP CLEAR)  | 2   |
| 10                     |           |                         |     | 48   | 190702 02 | EMBLEM (CAUTION, LOCK BOLTS) | 4   |
| 11                     | 193016 01 | L. H. TOP COVER         | 1   | 49   | 190702 04 | EMBLEM (SLING POINT)         | 4   |
| 12                     | HSS-0140  | SET SCREW               | 10  | 50   | 192839 01 | EMBLEM (SHEARBOLT PART No. ) | 1   |
| 13                     | 192570 01 | FRONT DEFLECTOR L. H.   | 1   | 51   | 192953 01 | EMBLEM (1/4 TURN)            | 2   |
| 14                     |           |                         |     | 52   | 190849 01 | EMBLEM (WARNING)             | 1   |
| 15                     | WSH-0009  | PLAIN WASHER            | 14  | 53   | 190848 05 | EMBLEM (CAB)                 | 1   |
| 16                     | WSH-0056  | SPRING WASHER           | 8   | 54   | 192376 01 | EMBLEM (PTO WARNING)         | 1   |
| 17                     | NUT-0260  | NYLOC NUT               | 5   | 55   | 193091 01 | EMBLEM (AUGER MAX. SPEED)    | 1   |
| 18                     | 191355 01 | COVER                   | 1   | 56   | 127075 16 | EMBLEM (GREASE 50 HOURS)     | 6   |
| 19                     | HSS-0084  | SET SCREW               | 12  | 57   |           |                              |     |
| 20                     | SCW-4700  | WING SCREW              | 1   | 58   | BLT-2158  | SHEARBOLT                    | 10  |
| 21                     | 193017 07 | R. H. GUARD             | 1   | 59   | NUT-0164  | NUT                          | 10  |
| 22                     |           |                         |     |  |           |                              |     |
| 23                     |           |                         |     |  |           |                              |     |
| 24                     |           |                         |     |  |           |                              |     |
| 25                     | 191370 01 | GUARD STAY              | 1   |  |           |                              |     |
| 26                     | PIN-1088  | SPLIT PIN               | 1   |  |           |                              |     |
| 27                     | 192473 01 | R. H. TOP COVER (REAR)  | 1   |  |           |                              |     |
| 28                     | 192569 01 | R. H. TOP COVER (FRONT) | 1   |  |           |                              |     |
| 29                     | 192555 01 | REAR DRIVE GUARD        | 1   |  |           |                              |     |
| 30                     | 193009 01 | REAR UPPER GUARD        | 1   |  |           |                              |     |
| 31                     | WSH-1038  | PENNY WASHER            | 2   |  |           |                              |     |
| 32                     |           |                         |     |  |           |                              |     |
| 33                     |           |                         |     |  |           |                              |     |
| 34                     |           |                         |     |  |           |                              |     |
| 35                     |           |                         |     |  |           |                              |     |
| 36                     |           |                         |     |  |           |                              |     |
| 37                     |           |                         |     |  |           |                              |     |
| 38                     |           |                         |     |  |           |                              |     |



**Shelbourne Reynolds Engineering Limited**

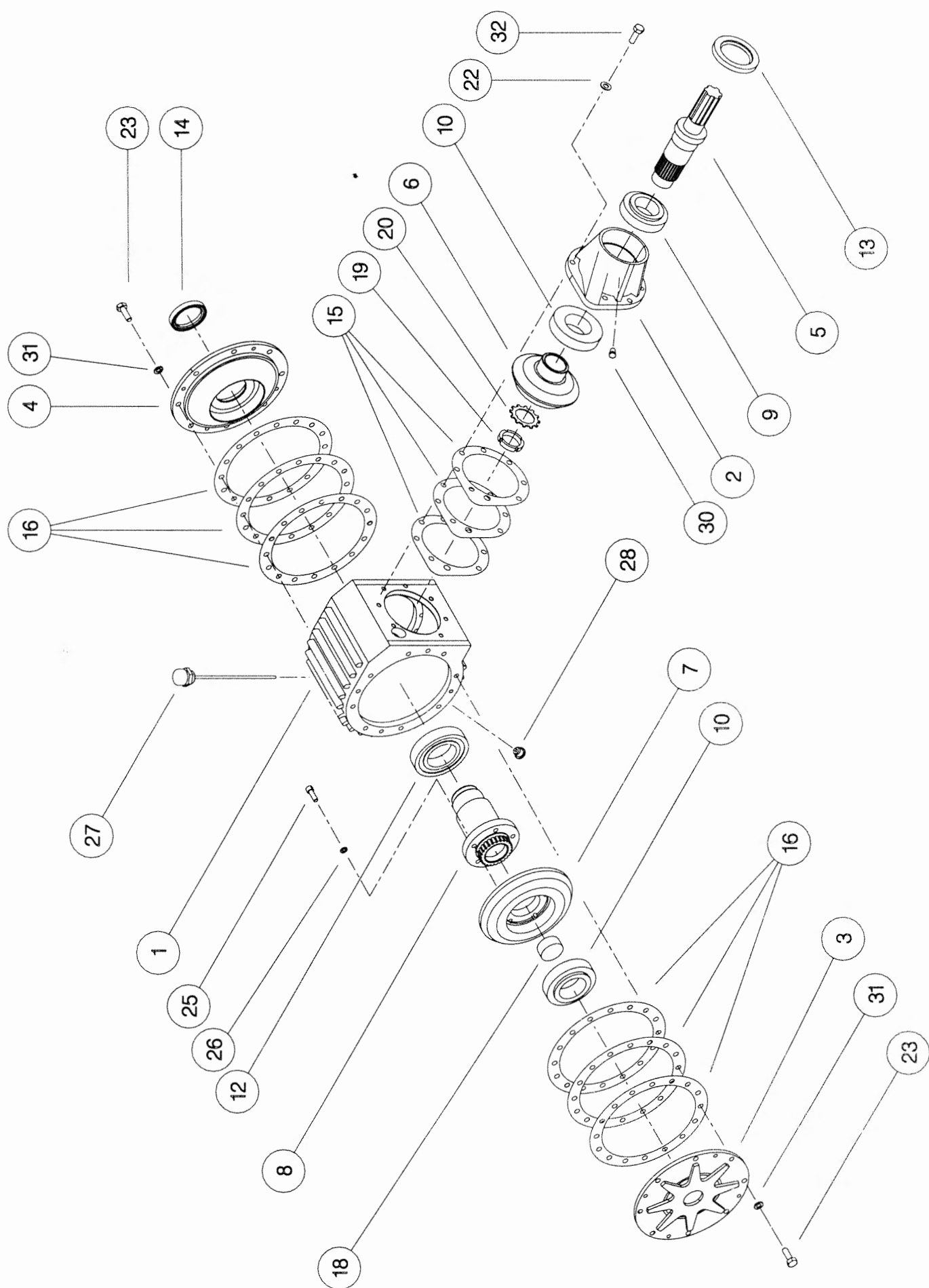
| ASSY NUMBER: 196119 02 |           |  |     | ASSY DESCRIPTION: ROTOR/AUGER DRIVE 1997 (7.2M) |           |                         |     |
|------------------------|-----------|--|-----|---|-----------|-------------------------|-----|
| ITEM                   | PART NO   | DESCRIPTION  | QTY | ITEM  | PART NO   | DESCRIPTION             | QTY |
| 1                      | 191652 01 | GEARBOX BRACKET                                      | 1   | 29  | KIT-00525 | PTO GUARD KIT           | 1   |
| 2                      | BSH-1530  | BUSH   | 4   | 30  | KIT-00410 | DROPBOX INPUT SHAFT KIT | 1   |
| 3                      | GEA-0095  | BEVEL GEARBOX<br>(SEE PARTS LIST GEA-0095)           | 1   |   |           | (CX72 ONLY)             |     |
| 4                      | HSSG12174 | SET SCREW  | 4   |   |           |                         |     |
| 5                      | WSH-0065  | SPRING WASHER  | 10  |   |           |                         |     |
| 6                      | WSH-0018  | PLAIN WASHER   | 8   |   |           |                         |     |
| 7                      | 190119 04 | PLAIN WASHER   | 4   |   |           |                         |     |
| 8                      | BLTA12290 | BOLT   | 4   |   |           |                         |     |
| 9                      | PTO-09010 | POWER SHAFT  | 1   |   |           |                         |     |
| 9a                     | BLT-2158  | SHEAR BOLT   |     |   |           |                         |     |
| 9b                     | NUT-0164  | NUT  |     |   |           |                         |     |
| 10                     | GEA-0135  | FIVE SPEED GEARBOX ASSY<br>(SEE PARTS LIST GEA-0135) | 1   |   |           |                         |     |
| 11                     | 192091 01 | GEARBOX BRACKET (ALUM. /FINS)                        | 1   |   |           |                         |     |
| 12                     | GEA-0101  | DROPBOX ASSY<br>(SEE PARTS LIST GEA-0101)            | 1   |   |           |                         |     |
| 13                     | HSS-0238  | SET SCREW  | 6   |   |           |                         |     |
| 14                     | 191680 01 | DROP BOX SUPPORT PLATE                               | 1   |   |           |                         |     |
| 15                     | HSS-0194  | SET SCREW  | 3   |   |           |                         |     |
| 16                     | WSH-0015  | PLAIN WASHER   | 6   |   |           |                         |     |
| 17                     | NUT-0265  | NYLOC NUT  | 3   |   |           |                         |     |
| 18                     | BLT-2316  | BOLT   | 4   |   |           |                         |     |
| 19                     | WSH-0024  | PLAIN WASHER   | 6   |   |           |                         |     |
| 20                     | NUT-0271  | NYLOC NUT  | 4   |   |           |                         |     |
| 21                     | 131041 01 | SPROCKET IDLER                                       | 2   |   |           |                         |     |
| 22                     | BRG-1995  | BEARING  | 2   |   |           |                         |     |
| 23                     | CIR-0470  | CIRCLIP  | 2   |   |           |                         |     |
| 24                     | 190060 06 | IDLER SPINDLE  | 2   |   |           |                         |     |
| 25                     | 191040 01 | IDLER SPACER   | 2   |   |           |                         |     |
| 26                     | 191777 01 | IDLER ADJ SCREW                                      | 1   |   |           |                         |     |
| 27                     | 191774 01 | PLATE  | 1   |   |           |                         |     |
| 28                     | NUT-0269  | NUT  | 1   |   |           |                         |     |



**Shelbourne Reynolds Engineering Limited**

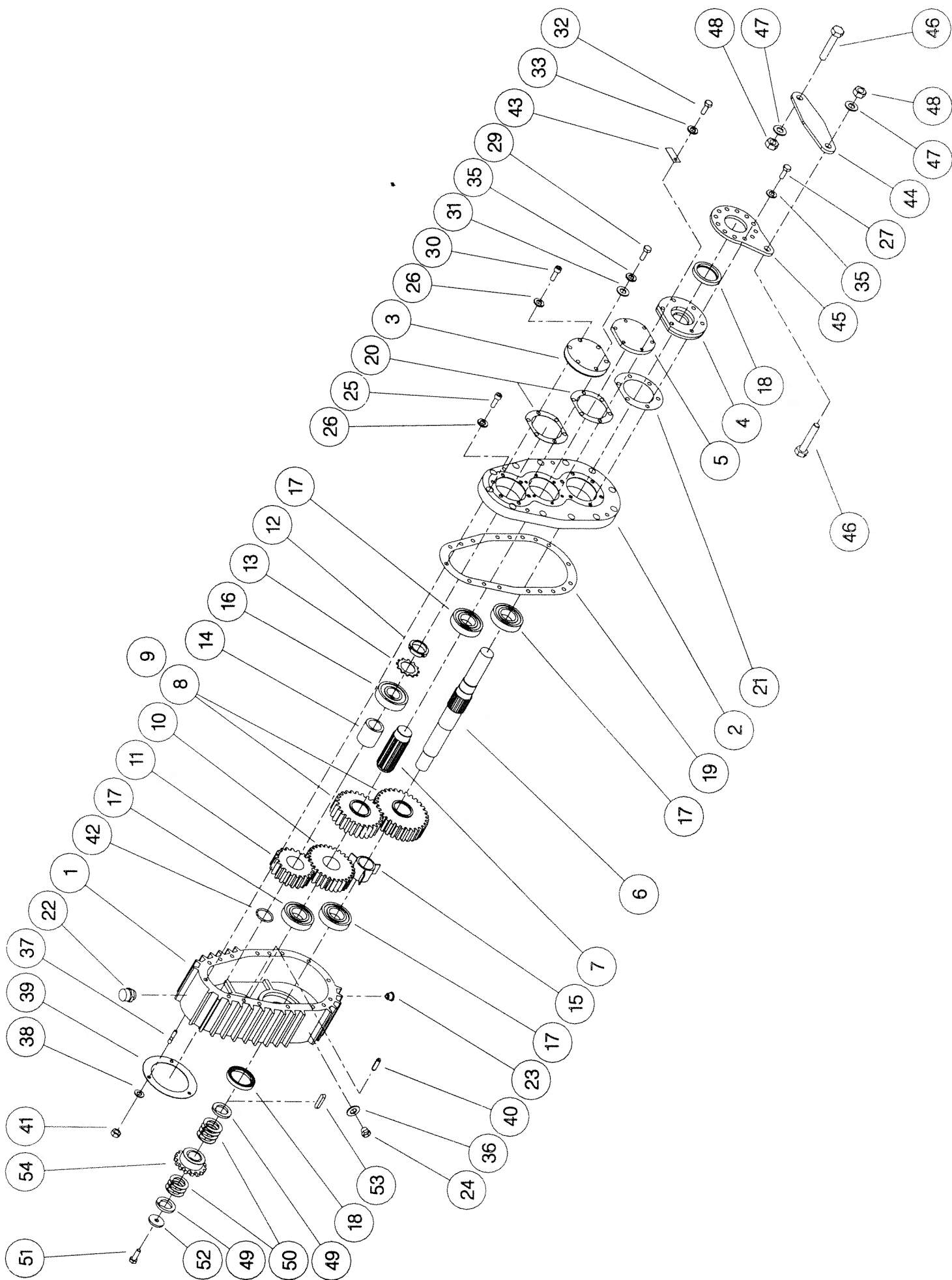
| ASSY NUMBER: GEA-0095 |           |                             |     | ASSY DESCRIPTION: BEVEL GEARBOX (1.5:1) |         |             |     |
|-----------------------|-----------|-----------------------------|-----|---|---------|-------------|-----|
| ITEM                  | PART NO   | DESCRIPTION                 | QTY | ITEM                                    | PART NO | DESCRIPTION | QTY |
| 1                     | 191715 01 | GEARBOX CASING              | 1   |   |         |             |     |
| 2                     | 191716 01 | INPUT HOUSING               | 1   |   |         |             |     |
| 3                     | 191717 01 | OUTSIDE END COVER           | 1   |   |         |             |     |
| 4                     | 191718 01 | INSIDE END COVER            | 1   |   |         |             |     |
| 5                     | 191819 01 | INPUT SHAFT (28T INVOLUTE)  | 1   |   |         |             |     |
| 6                     | 191798 01 | BEVEL GEAR 20T (28T INV)    | 1   |   |         |             |     |
| 7                     | 191799 01 | BEVEL GEAR 30T (25T INV)    | 1   |   |         |             |     |
| 8                     | 191800 01 | OUTPUT SHAFT (25T INVOLUTE) | 1   |   |         |             |     |
| 9                     | BRG-7000  | BEARING                     | 1   |   |         |             |     |
| 10                    | BRG-7020  | BEARING                     | 2   |   |         |             |     |
| 11                    |           |                             |     |   |         |             |     |
| 12                    | BRG-7040  | BEARING                     | 1   |   |         |             |     |
| 13                    | SEA-0590  | ROTARY SHAFT SEAL           | 1   |   |         |             |     |
| 14                    | SEA-0600  | ROTARY SHAFT SEAL           | 1   |   |         |             |     |
| 15                    | 191812    | SHIM PACK (INPUT)           | 1   |   |         |             |     |
| 16                    | 191813    | SHIM PACK (ENDS)            | 2   |   |         |             |     |
| 17                    |           |                             |     |   |         |             |     |
| 18                    | 191735 01 | SHAFT PLUG                  | 1   |   |         |             |     |
| 19                    | NUT-3010  | LOCK RING                   | 1   |   |         |             |     |
| 20                    | WSH-6010  | LOCK WASHER                 | 1   |   |         |             |     |
| 21                    |           |                             |     |   |         |             |     |
| 22                    | WSH-1301  | SHAKEPROOF WASHER           | 7   |   |         |             |     |
| 23                    | HSS-0191  | SET SCREW                   | 16  |   |         |             |     |
| 24                    |           |                             |     |   |         |             |     |
| 25                    | SCW-0139  | CAP HEAD SCREW              | 5   |   |         |             |     |
| 26                    | WSH-0058  | SPRING WASHER               | 5   |   |         |             |     |
| 27                    | FIT-0254  | BREATHING/DIP STICK         | 1   |   |         |             |     |
| 28                    | FIT-0253  | MAGNETIC DRAIN PLUG         | 1   |   |         |             |     |
| 29                    |           |                             |     |   |         |             |     |
| 30                    | FIT-0223  | TAPER PLUG                  | 1   |   |         |             |     |
| 31                    | WSH-0061  | SPRING WASHER               | 16  |   |         |             |     |
| 32                    | SCW-0190  | CAP SOC. HEAD SCREW         | 7   |   |         |             |     |





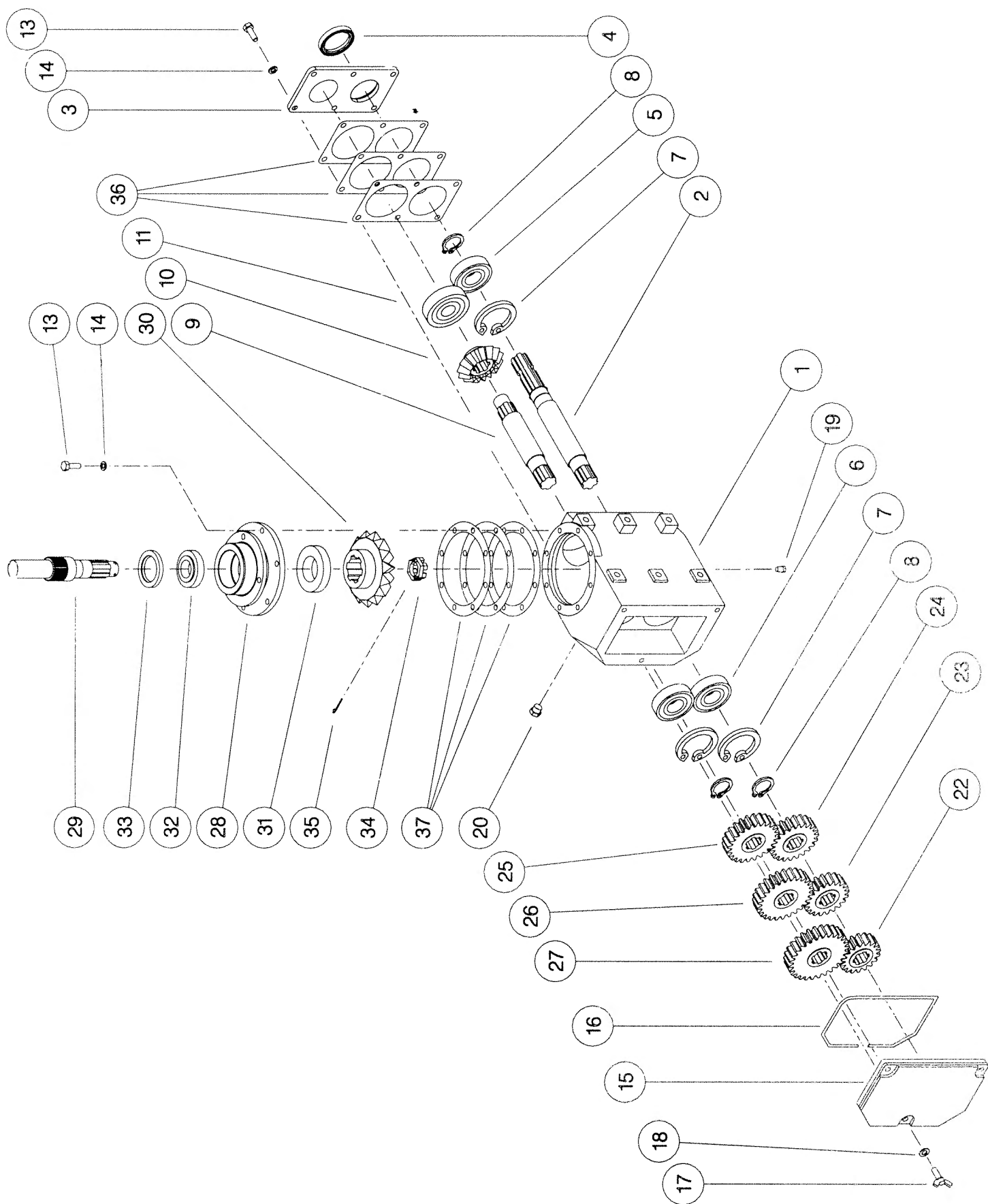
**Shelbourne Reynolds Engineering Limited**

| ASSY NUMBER: GEA-0101 |           |  |     | ASSY DESCRIPTION: SHORT DROPBOX FOR RX & CX (1996) |           |                               |     |
|-----------------------|-----------|--|-----|--|-----------|-------------------------------|-----|
| ITEM                  | PART NO   | DESCRIPTION                                | QTY | ITEM   | PART NO   | DESCRIPTION                   | QTY |
| 1                     | 191723 01 | GEARCASE                                   | 1   | 38   | WSH-0012  | PLAIN WASHER                  | 3   |
| 2                     | 191723 02 | LID  | 1   | 39   | 191759 01 | SEAL                          | 1   |
| 3                     | 191696 01 | OUTPUT END CAP                             | 1   | 40   | 191765 01 | DOWL                          | 2   |
| 4                     | 191694 01 | INPUT FLANGE                               | 1   | 41   | NUT-0263  | NYLOC NUT                     | 3   |
| 5                     | 191693 01 | END CAP                                    | 1   | 42   | CIR-4000  | SNAP RING CIRCLIP             | 1   |
| 6                     | 191807 01 | INPUT/AUGER OUTPUT SHAFT<br>(28T INVOLUTE) | 1   | 43   | 191928 01 | IDENTIFICATION TAG            | 1   |
| 7                     | 191801 01 | INTERMED. SHAFT (28T INV)                  | 1   | 44   | 193097 01 | FIXED LINK                    | 1   |
| 8                     | *         | CHANGE GEAR (SEE DRIVE SUB)                |     | 45   | 191687 01 | LINK BRACKET                  | 1   |
| 9                     | *         | CHANGE GEAR (SEE DRIVE SUB)                |     | 46   | HSS-0316  | SET SCREW                     | 2   |
| 10                    | 191803 01 | SPUR GEAR 30T (28T INV)                    | 1   | 47   | WSH-0024  | WASHER                        | 2   |
| 11                    | 191884 01 | SPUR GEAR 20T (28T INV)                    | 1   | 48   | NUT-0271  | NUT                           | 2   |
| 12                    | NUT-3000  | LOCK RING                                  | 1   | 49   | 191692 01 | SPACER                        | 2   |
| 13                    | WSH-6000  | LOCK WASHER                                | 1   | 50   | 191692 02 | SHIM                          | 7   |
| 14                    | 191725 01 | SPACER                                     | 1   | 51   | HSSF10174 | SET SCREW                     | 1   |
| 15                    | 191894 01 | SPACER                                     | 1   | 52   | 190548 01 | PLAIN WASHER                  | 1   |
| 16                    | BRG-6600  | BEARING                                    | 1   | 53   | K1008045  | KEY                           | 1   |
| 17                    | BRG-5800  | BEARING                                    | 4   | 54   | *         | AUGER SPROCKET(SEE DRIVE SUB) |     |
| 18                    | SEA-0610  | ROTARY SHAFT SEAL                          | 2   |  |           |                               |     |
| 19                    | 191756 01 | GASKET                                     | 1   |  |           |                               |     |
| 20                    | 191757    | SEAL PACK                                  | 2   |  |           |                               |     |
| 21                    | 191758    | SEAL PACK                                  | 1   |  |           |                               |     |
| 22                    | FIT-0255  | BREATHER                                   | 1   |  |           |                               |     |
| 23                    | FIT-0253  | MAGNETIC DRAIN PLUG1                       |     |  |           |                               |     |
| 24                    | FIT-0251  | LEVEL PLUG                                 | 1   |  |           |                               |     |
| 25                    | SCW-0196  | CAP HEAD SCREW                             | 12  |  |           |                               |     |
| 26                    | WSH-1301  | SHAKEPROOF WASHER                          | 15  |  |           |                               |     |
| 27                    | HSS-0202  | SETSCREW                                   | 6   |  |           |                               |     |
| 28                    |           |  |     |  |           |                               |     |
| 29                    | BLTA10290 | BOLT                                       | 3   |  |           |                               |     |
| 30                    | SCW-0190  | CAP HEAD SCREW                             | 3   |  |           |                               |     |
| 31                    | WSH-0015  | PLAIN WASHER                               | 3   |  |           |                               |     |
| 32                    | HSS-0145  | SET SCREW                                  | 6   |  |           |                               |     |
| 33                    | WSH-1300  | SHAKEPROOF WASHER                          | 6   |  |           |                               |     |
| 34                    |           |  |     |  |           |                               |     |
| 35                    | WSH-0061  | SPRING WASHER                              | 9   |  |           |                               |     |
| 36                    | WSH-1010  | DOWTY WASHER                               | 1   |  |           |                               |     |
| 37                    | 191737 01 | STUD                                       | 3   |  |           |                               |     |



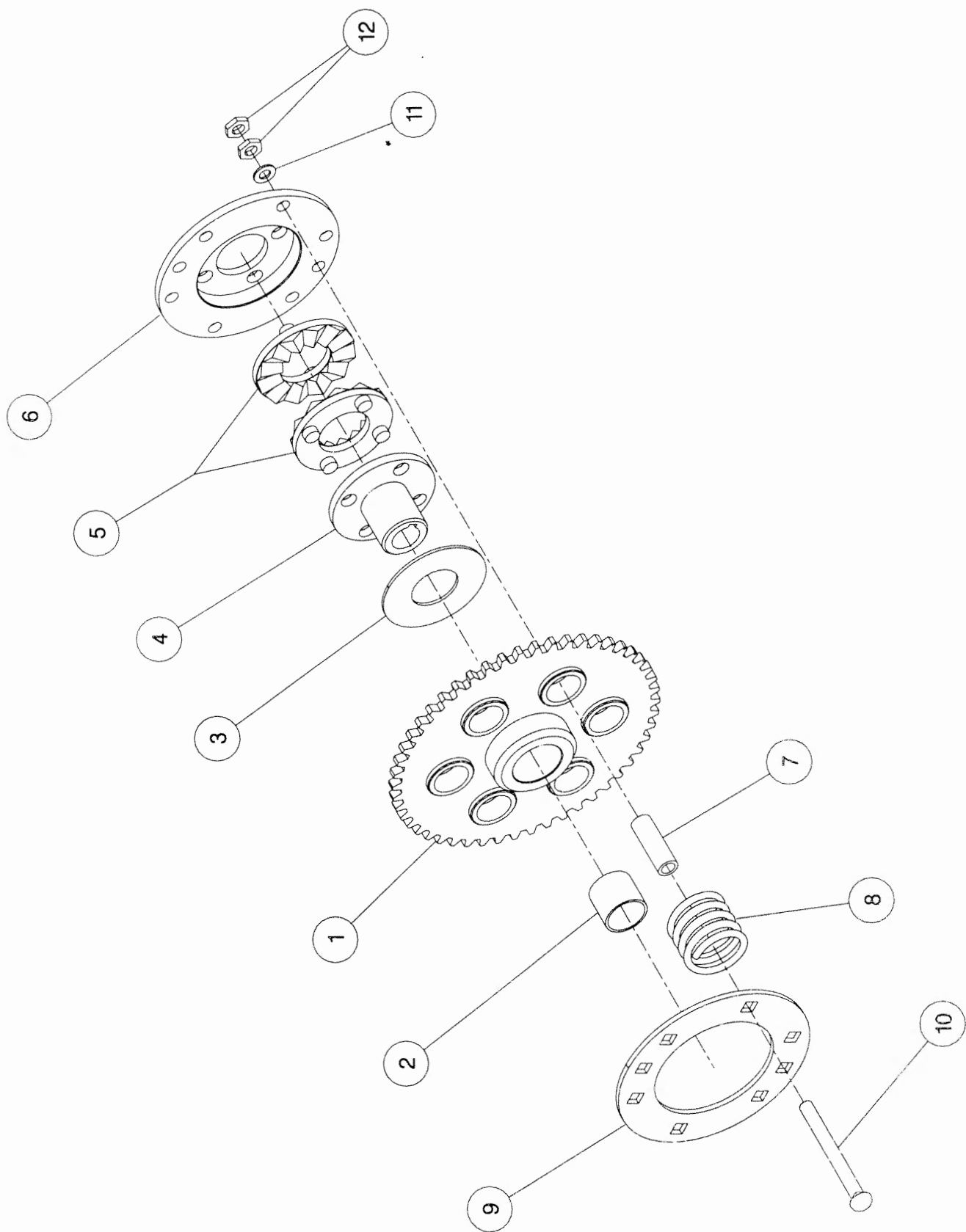
**Shelbourne Reynolds Engineering Limited**

| ASSY NUMBER: |           | ASSY DESCRIPTION: 5 SPEED G. BOX ASSY ALUM/FINISHED 1997 (WITH DROP BOX) |     |      |         |             |     |
|--------------|-----------|--|-----|------|---------|-------------|-----|
| ITEM         | PART NO   | DESCRIPTION  | QTY | ITEM | PART NO | DESCRIPTION | QTY |
| 1            | 191821 01 | GEARBOX CASING   | 1   |      |         |             |     |
| 2            | 191829 01 | INPUT SHAFT  | 1   |      |         |             |     |
| 3            | 191825 01 | SEAL HOUSING   | 1   |      |         |             |     |
| 4            | SEA-0550  | ROTARY SHAFT SEAL  | 1   |      |         |             |     |
| 5            | BRG-6600  | BEARING  | 1   |      |         |             |     |
| 6            | BRG-6601  | BEARING  | 2   |      |         |             |     |
| 7            | CIR-3800  | CIRCLIP  | 3   |      |         |             |     |
| 8            | CIR-2700  | CIRCLIP  | 3   |      |         |             |     |
| 9            | 191828 01 | LAYSHAFT   | 1   |      |         |             |     |
| 10           | 191823 01 | BEVEL GEAR (15T)   | 1   |      |         |             |     |
| 11           | BRG-6800  | BEARING  | 1   |      |         |             |     |
| 12           |           |  |     |      |         |             |     |
| 13           | HSS-0194  | SET SCREW  | 14  |      |         |             |     |
| 14           | WSH-0061  | SPRING WASHER  | 14  |      |         |             |     |
| 15           | 192924 01 | REMOVABLE COVER  | 1   |      |         |             |     |
| 16           | ORA260000 | 'O' RING SEAL STRIP  | 0.7 |      |         |             |     |
| 17           | SCW-4760  | WING SCREW   | 3   |      |         |             |     |
| 18           | WSH-1301  | SHAKEPROOF WASHER  | 3   |      |         |             |     |
| 19           | FIT-0223  | PLUG   | 1   |      |         |             |     |
| 20           | FIT-0218  | BREATHER   | 1   |      |         |             |     |
| 21           |           |  |     |      |         |             |     |
| 22           | 191822 18 | CHANGE GEAR (18T)  | 1   |      |         |             |     |
| 23           | 191822 20 | CHANGE GEAR (20T)  | 1   |      |         |             |     |
| 24           | 191822 22 | CHANGE GEAR (22T)  | 1   |      |         |             |     |
| 25           | 191822 24 | CHANGE GEAR (24T)  | 1   |      |         |             |     |
| 26           | 191822 26 | CHANGE GEAR (26T)  | 1   |      |         |             |     |
| 27           | 191822 28 | CHANGE GEAR (28T)  | 1   |      |         |             |     |
| 28           | 191691 02 | OUTPUT HOUSING (HOLES, 1997)   | 1   |      |         |             |     |
| 29           | 191885 01 | OUTPUT SHAFT   | 1   |      |         |             |     |
| 30           | 191824 01 | BEVEL GEAR (18T)   | 1   |      |         |             |     |
| 31           | BRG-6000  | BEARING  | 1   |      |         |             |     |
| 32           | BRG-5700  | BEARING  | 1   |      |         |             |     |
| 33           | SEA-0565  | ROTARY SHAFT SEAL  | 1   |      |         |             |     |
| 34           | 191843 01 | SLOTTED NUT  | 1   |      |         |             |     |
| 35           | PIN-1168  | SPLIT PIN  | 1   |      |         |             |     |
| 36           | 191830    | GASKET SET   | 1   |      |         |             |     |
| 37           | 191831    | GASKET SET   | 1   |      |         |             |     |



**Shelbourne Reynolds Engineering Limited**

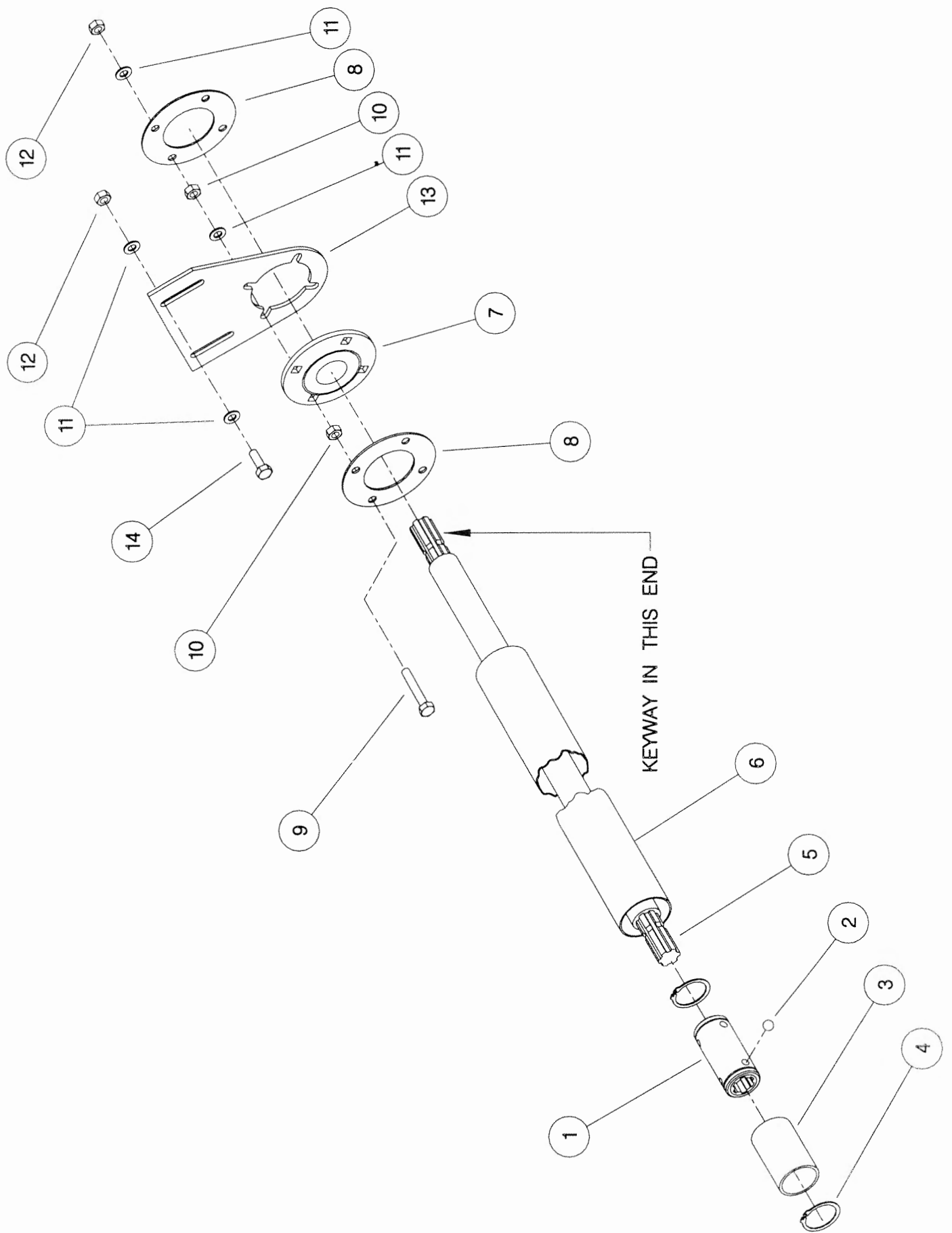
| ASSY NUMBER: |           | KIT-00109         |     | ASSY DESCRIPTION: |         | AUGER DRIVE SPROCKET/CLUTCH ASSY |     |
|--------------|-----------|-------------------|-----|-------------------|---------|----------------------------------|-----|
| ITEM         | PART NO   | DESCRIPTION       | QTY | ITEM              | PART NO | DESCRIPTION                      | QTY |
| 1            | 192763 01 | SPROCKET ASSY 50T | 1   |                   |         |                                  |     |
| 2            | BSH-3019  | BUSH              | 1   |                   |         |                                  |     |
| 3            | 192008 01 | THRUST WASHER     | 1   |                   |         |                                  |     |
| 4            | 192013 01 | CLUTCH HUB        | 1   |                   |         |                                  |     |
| 5            | 131005    | CLUTCH PLATE      | 2   |                   |         |                                  |     |
| 6            | 192014 01 | DRIVE DISC        | 1   |                   |         |                                  |     |
| 7            | 131073 03 | SPACER            | 6   |                   |         |                                  |     |
| 8            | 131063    | SPRING            | 6   |                   |         |                                  |     |
| 9            | 192009 01 | FIXING RING       | 1   |                   |         |                                  |     |
| 10           | BLTF12563 | COACH BOLT        | 6   |                   |         |                                  |     |
| 11           | WSH-0018  | PLAIN WASHER      | 6   |                   |         |                                  |     |
| 12           | NUT-0370  | HALF NUT          | 12  |                   |         |                                  |     |



**Shelbourne Reynolds Engineering Limited**

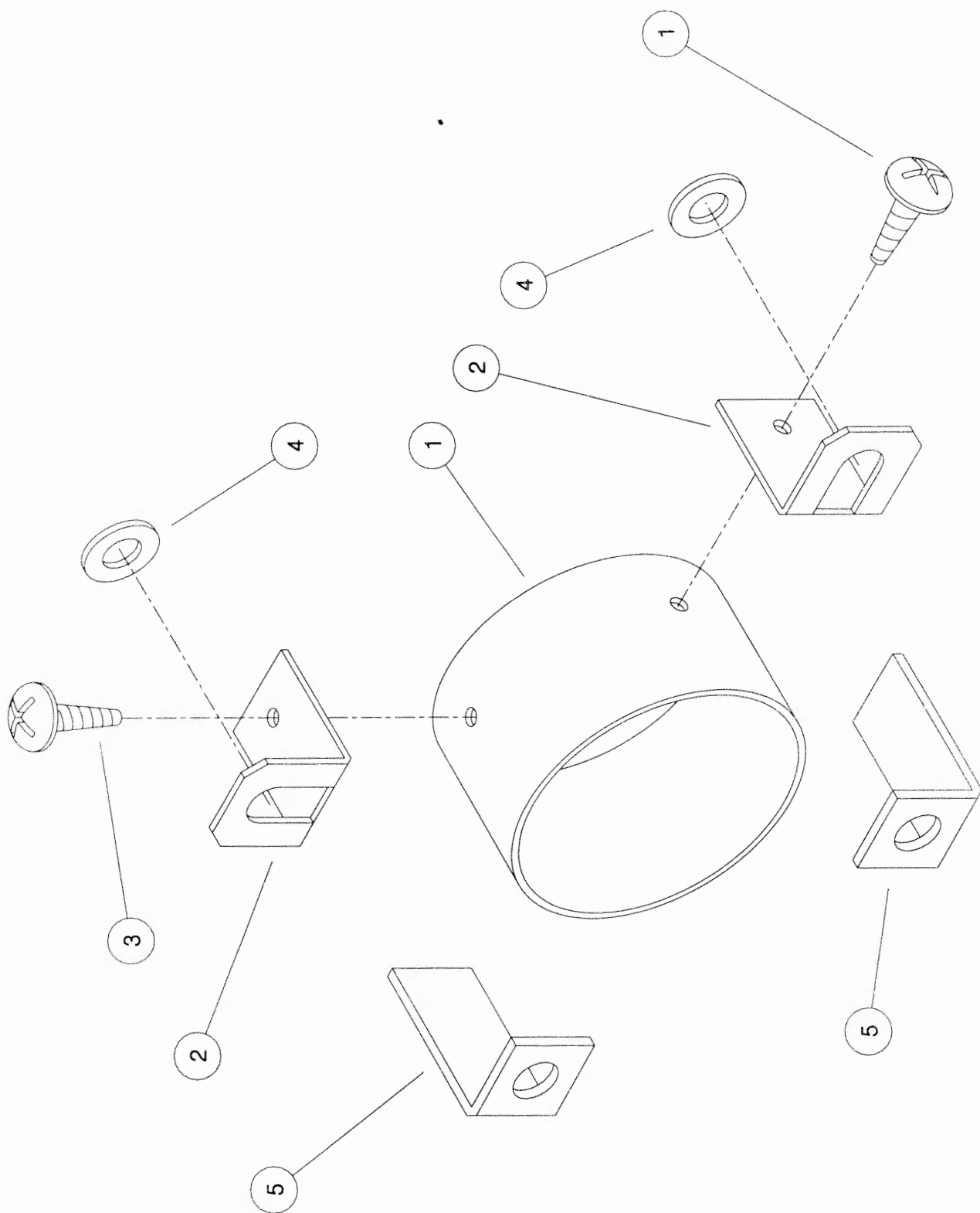
| ASSY NUMBER: KIT-00410 |           |                     |     | ASSY DESCRIPTION: GEARBOX INPUT SHAFT SUB |         |             |     |
|------------------------|-----------|---------------------|-----|---|---------|-------------|-----|
| ITEM                   | PART NO   | DESCRIPTION         | QTY | ITEM                                      | PART NO | DESCRIPTION | QTY |
| 1                      | 192979 01 | COUPLING            | 1   |   |         |             |     |
| 2                      | BRG-80120 | RETAINING BALLS     | 6   |   |         |             |     |
| 3                      | 192980 01 | RETAINING SLEEVE    | 1   |   |         |             |     |
| 4                      | CIR-0055  | CIRCLIP             | 2   |   |         |             |     |
| 5                      | 192982 01 | INPUT SHAFT         | 1   |   |         |             |     |
| 6                      | 192985 01 | INPUT SHAFT GUARD   | 1   |   |         |             |     |
| 7                      | BRG-24500 | BEARING             | 1   |   |         |             |     |
| 8                      | 192991 01 | GUARD SUPPORT PLATE | 2   |   |         |             |     |
| 9                      | HSS-0275  | SET SCREW           | 4   |   |         |             |     |
| 10                     | NUT-0170  | NUT                 | 8   |   |         |             |     |
| 11                     | WSH-0018  | WASHER              | 12  |   |         |             |     |
| 12                     | NUT-0269  | NUT                 | 6   |   |         |             |     |
| 13                     | 192993 01 | SUPPORT PLATE       | 1   |   |         |             |     |
| 14                     | HSS-0238  | SETSCREW            | 2   |   |         |             |     |





**Shelbourne Reynolds Engineering Limited**

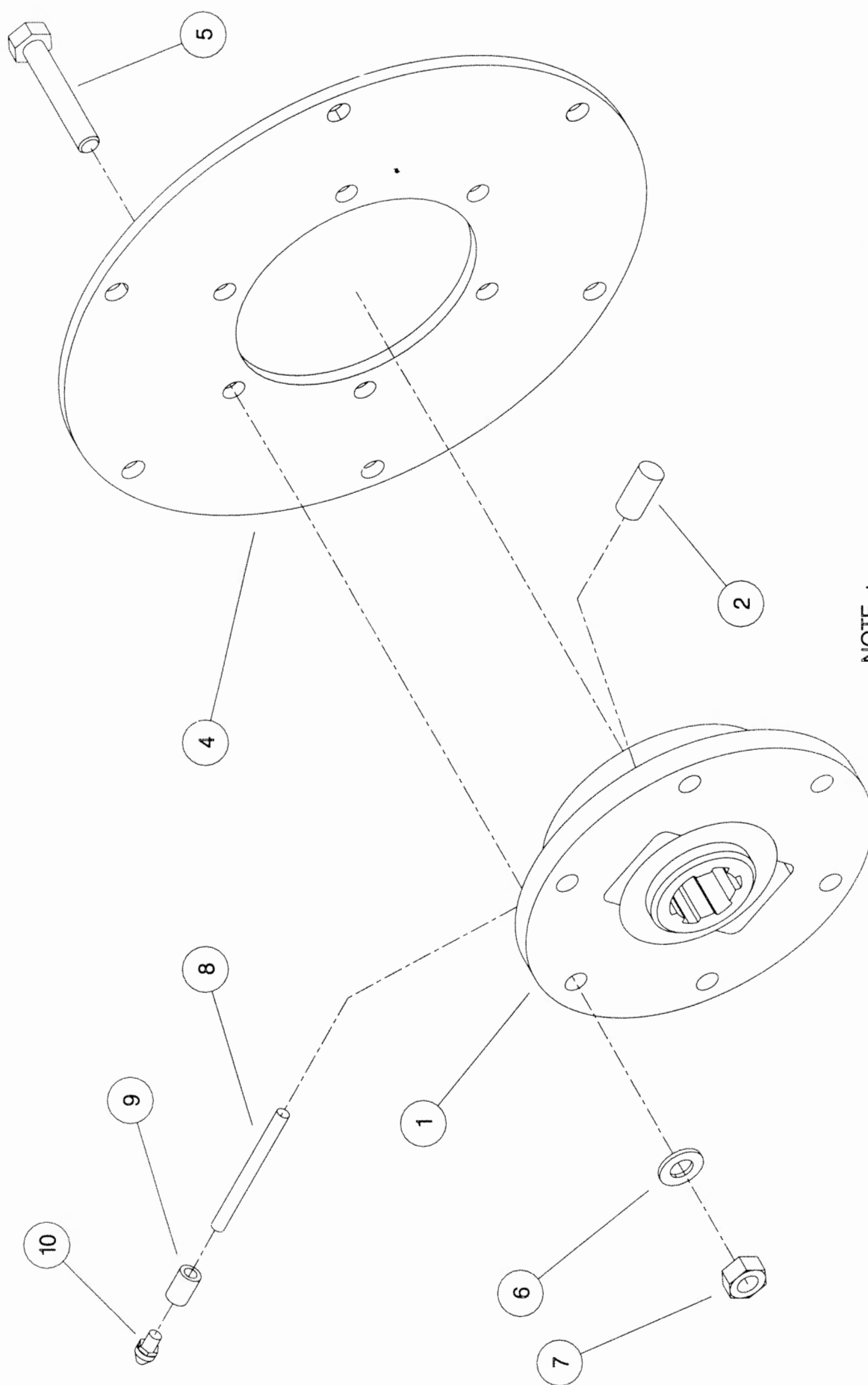
| ASSY NUMBER: |           | KIT-00525              |     | ASSY DESCRIPTION: PTO END GUARD |         |             |     |
|--------------|-----------|------------------------|-----|---------------------------------|---------|-------------|-----|
| ITEM         | PART NO   | DESCRIPTION            | QTY | ITEM                            | PART NO | DESCRIPTION | QTY |
| 1            | 192985 06 | GUARD TUBE             | 1   |                                 |         |             |     |
| 2            | 192992 01 | GUARD SECURING BRACKET | 2   |                                 |         |             |     |
| 3            | SCW-5104  | SCREW                  | 2   |                                 |         |             |     |
| 4            | WSH-0015  | WASHER                 | 2   |                                 |         |             |     |
| 5            | 191763 01 | PTO BRACKET            | 2   |                                 |         |             |     |



THIS KIT FIXES TO :  
 R.X HEADERS – DIRECTLY ON TO DROP BOX ASSY.  
 C.X HEADERS – ON TO REAR SHAFT SUPPORT BEARING PLATE.

**Shelbourne Reynolds Engineering Limited**

| ASSY NUMBER: KIT-00976 |           |                     |     | SUB ASSY DESCRIPTION: BALL JOINT COUPLING (CAST ROTOR) |         |             |     |
|------------------------|-----------|---------------------|-----|--|---------|-------------|-----|
| ITEM                   | PART NO   | DESCRIPTION         | QTY | ITEM   | PART NO | DESCRIPTION | QTY |
| 1                      | 193114 01 | SPLINED BALL        | 1   |  |         |             |     |
| 2                      | SCW-4530  | GRUB SCREW          | 1   |  |         |             |     |
| 3                      |           |                     |     |  |         |             |     |
| 4                      | 193106 01 | DRIVE RING PLATE    | 1   |  |         |             |     |
| 5                      | HSS-0198  | SETSCREW            | 6   |  |         |             |     |
| 6                      | WSH-0015  | WASHER              | 6   |  |         |             |     |
| 7                      | NUT-0265  | NUT                 | 6   |  |         |             |     |
| 8                      | 193077 01 | GREASE TUBE         | 1   |  |         |             |     |
| 9                      | 193078 01 | GREASE TUBE ADAPTOR | 1   |  |         |             |     |
| 10                     | NIP-00600 | GREASE NIPPLE       | 1   |  |         |             |     |

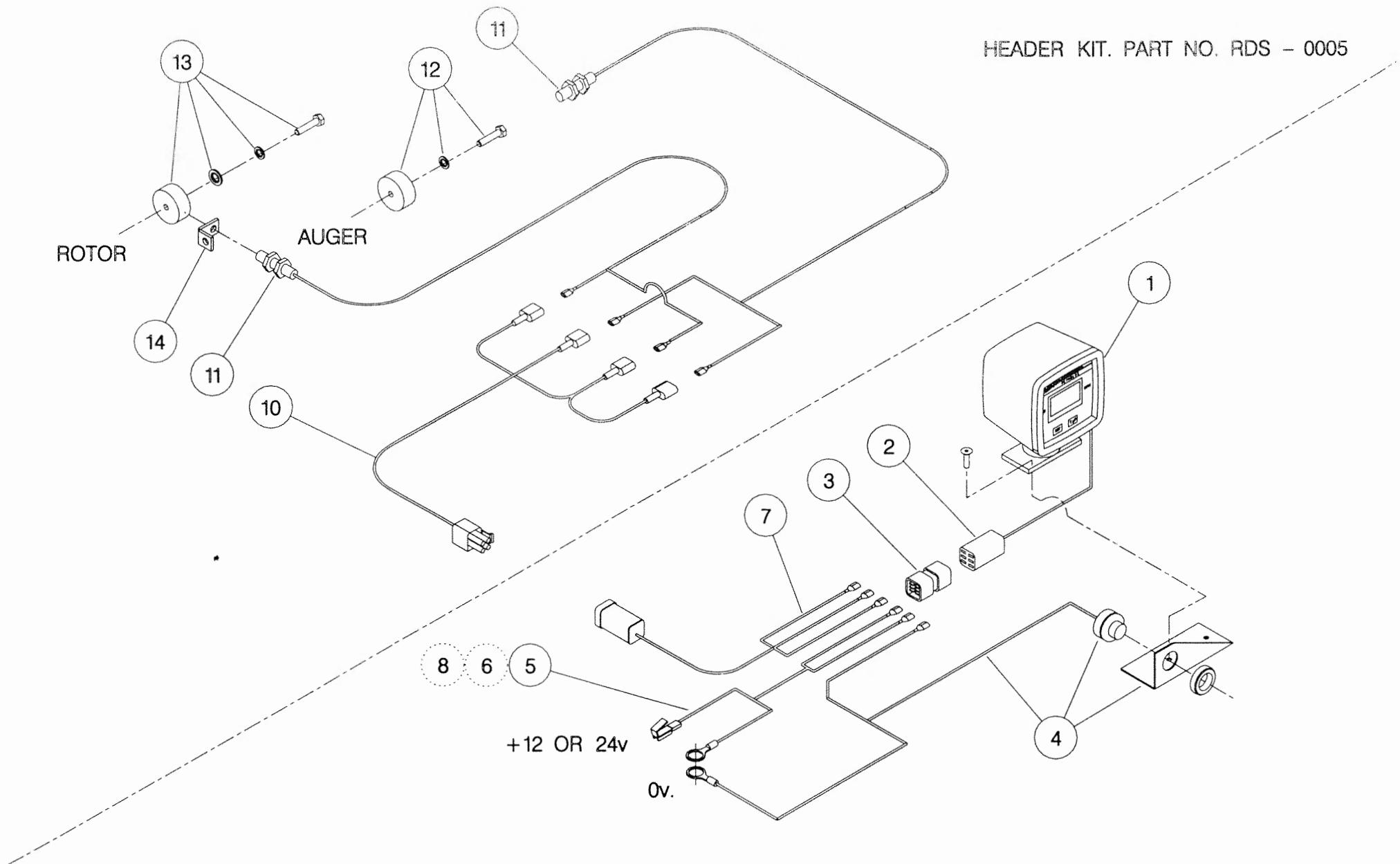


NOTE :  
 ENSURE GREASE TUBE (ITEM 8) & GRUB SCREW  
 (ITEM 2) ARE ASSEMBLED INTO CAST HOUSING (ITEM 1)  
 THE ORIENTATION SHOWN IS FOR A R.H. ROTOR  
 OPPOSITE ORIENTATION FOR L.H. ROTOR.

**Shelbourne Reynolds Engineering Limited**

| ASSY NUMBER: RDS-0001/RDS-0005 |          |  |             | ASSY DESCRIPTION: TACHO KIT |          |                                 |        |
|--------------------------------|----------|--|-------------|-----------------------------|----------|---------------------------------|--------|
| ITEM                           | PART NO  | DESCRIPTION  | QTY         | ITEM                        | PART NO  | DESCRIPTION                     | QTY    |
| 1                              | RDS-0010 | TACHO HEAD COMPLETE                                    | 1           | 13                          | RDS-0020 | MAGNET CARRIER ,                | 1      |
| 2                              | RDS-0011 | TACHO HEAD PLUG & ARMS                                 | 1           |                             |          | SET SCREW ,                     | 1      |
| 3                              | RDS-0012 | HARTING CONNECTOR &<br>STICKER                         | 1<br>1      |                             |          | PENNY WASHER &<br>SPRING WASHER | 1<br>1 |
| 4                              | RDS-0013 | AUDIBLE ALARM,<br>FIXING BRACKET &<br>SELF TAP. SCREWS | 1<br>1<br>2 | 14                          | RDS-0021 | ROTOR SENSOR BRACKET            | 1      |
| 5                              | RDS-0014 | POWER CONNECTION LEAD                                  | 1           |                             |          |                                 |        |
| 6                              | FUS-0022 | FUSE   | 1           |                             |          |                                 |        |
| 7                              | RDS-0015 | COMBINE LEAD   | 1           |                             |          |                                 |        |
| 8                              | RDS-0016 | 24V-12V CONVERTER KIT<br>(NOT INCLUDED IN RDS-0001)    | 1           |                             |          |                                 |        |
| 9                              |          |  |             |                             |          |                                 |        |
| 10                             | RDS-0017 | HEADER LEAD  | 1           |                             |          |                                 |        |
| 11                             | RDS-0018 | SHAFT SENSOR   | 2           |                             |          |                                 |        |
| 12                             | RDS-0019 | MAGNET ,<br>TAPTITE BOLT &<br>FIBRE WASHER             | 1<br>1<br>1 |                             |          |                                 |        |

HEADER KIT. PART NO. RDS - 0005



COMBINE KIT. PART NO. RDS - 0001

NOTE ;

ITEM 6 IS USED IF POWER SUPPLY IS NOT FUSED.

ITEM 8 IS USED IF POWER SUPPLY IS 24V, -VE EARTH. (NOT INCLUDED IN RDS - 0001).

ITEM 4 (ALARM) IS BUILT INTO ITEM 1 (TACHO HEAD) ON LATER MODELS.

