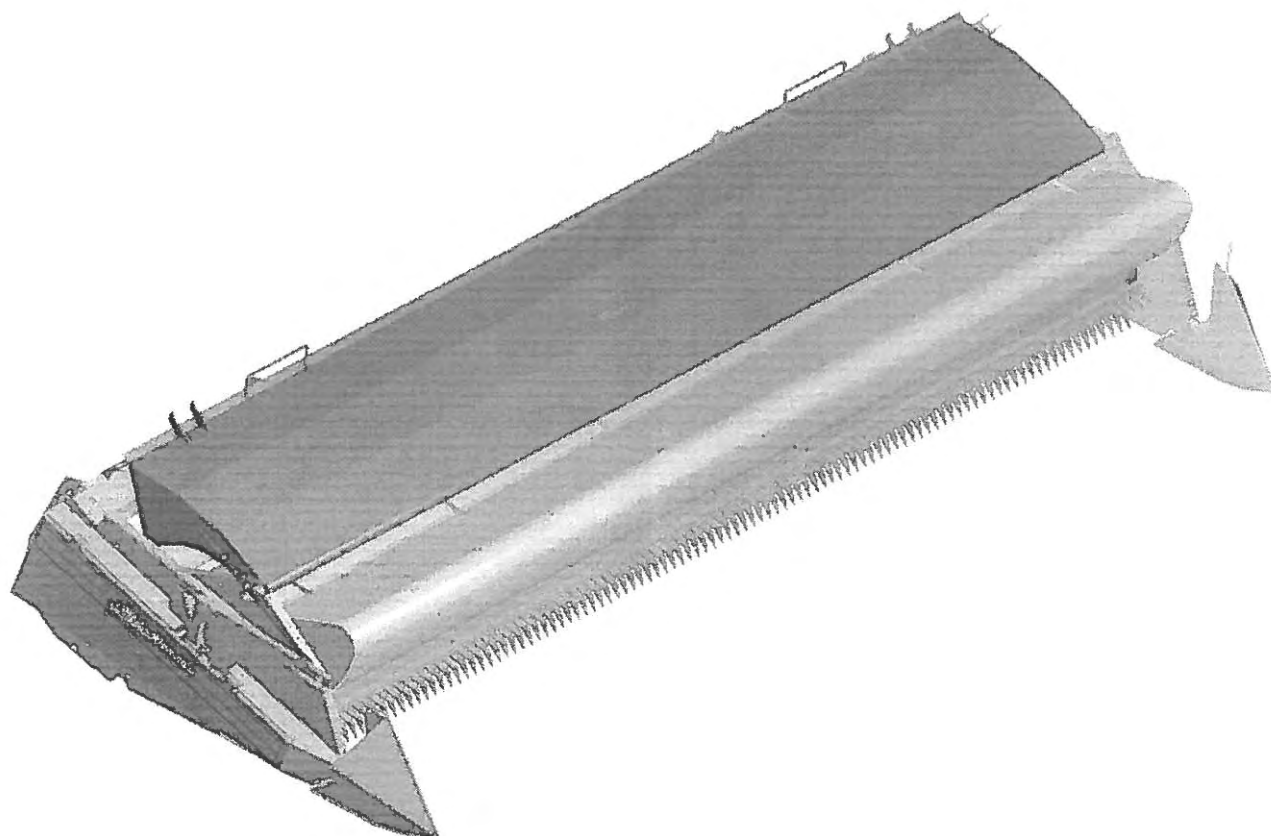


# *CX84 Shelbourne Header* (1998)

## PARTS MANUAL



Shelbourne Reynolds Engineering Ltd

Stanton

Bury St Edmunds

Suffolk IP31 2AR

England

Telephone: 01359 250415

Fax. No: 01359 250464

(Stores direct 01359 251231)

(Stores direct 01359 252031)



## **SHELBOURNE HEADER PARTS MANUAL**

Your *Shelbourne* Header is designed to fit many different types of combine.

For this reason the machine number index is broken down into sections for identification. Your serial and machine numbers are listed below:

SHELBOURNE HEADER SERIAL NUMBER \_\_\_\_\_

SHELBOURNE HEADER MACHINE NUMBER \_\_\_\_\_

ADAPTOR PLATE ASSEMBLY \_\_\_\_\_

DRIVE KIT \_\_\_\_\_

HYDRAULIC FITTING KIT \_\_\_\_\_

OTHER KIT OPTIONS \_\_\_\_\_

\_\_\_\_\_

\_\_\_\_\_

This manual contains all parts common to the *Shelbourne* Header and is used in conjunction with the combine fittings manual, which contains the adaptor plate, and drive kit parts and fitting, and any other options available.

### **MACHINE IDENTIFICATION**

The *Shelbourne* Header machine identification number is engraved on a plate on the top right hand corner of the header.

The adaptor plate has a plate on the top right hand corner also with the adaptor plate assembly number engraved on it.

The drive kit can be identified by description, and use of the drive kit identification number marked above.

## ORDERING SPARE PARTS

To ensure that you order the correct part from your SRE dealer please use the following procedure.

### ALWAYS QUOTE THE MACHINE AND SERIAL NUMBERS WHEN ORDERING.

Refer to the front of this parts list book (machine assemblies), decide if the part you want is on:

*Shelbourne* Head  
Adaptor Kit  
Drive Kit

If your part is on the Adaptor Kit, identify by matching the part number from the adaptor plate with that in the top left hand corner of the parts lists. You will find the appropriate drawing accompanying the parts list.

If the part you require is on the drive kit, ensure that you have the parts listing for the correct combine model and width. Then progress through to the next drawing following that list, for indication of that part.

If the part you require is on the *Shelbourne* Head assembly, identify the appropriate assembly by matching the part number from the *Shelbourne* Head with the page with the same number marked on the top left hand side.

Use the following sub assembly numbers and descriptions to find the area of the machine that your part is required, i.e. you need a part which is fitted to the auger, your part will be in the auger assembly parts list.

Having decided which sub-assembly your part should be under, use the number beside that sub-assembly description which will begin with 1960-- -- to find the parts listing of the sub-assembly further on in the manual. The number will be printed in the top left hand corner, the sub-assemblies are in numerical order.

Having found the correct parts list, you will find the corresponding drawing by processing through the manual to the next drawing.

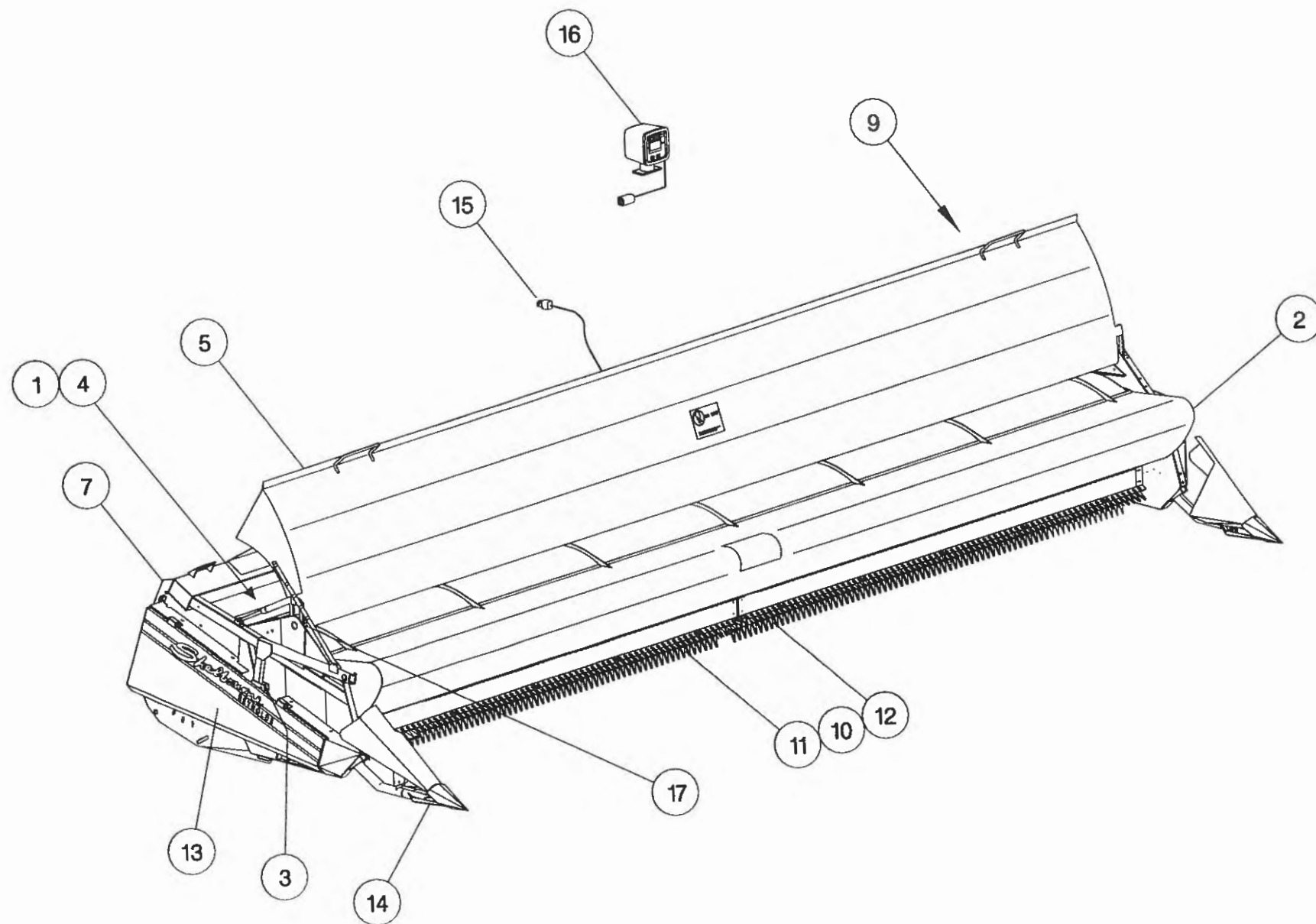
The drawings indicate the components by item numbers which you will find are repeated in the left hand side of your parts listing, and therefore referring to the correct part.

If the item within the sub-assembly is a further collection of parts (i.e. a KIT within a sub assembly) then the parts listing for this will be found just after the 1960-- -- sub-assemblies. These smaller assemblies will be in alphabetical and numerical order.



**Shelbourne Reynolds Engineering Limited**

ASSY NUMBER: 196543 14				ASSY DESCRIPTION: CX84 DIRECT SHELBOURNE HEADER (1998)			
ITEM	PART NO	DESCRIPTION	QTY	ITEM	PART NO	DESCRIPTION	QTY
1	196102 02	AUGER MTG SUB	1				
2	196053 34	ADJ CROP DEFLECTOR SUB	1				
3	196140 14	HYDRAULICS	1				
4	196141 14	AUGER ASSY	1				
5	196116 14	HOOD SUB ASSY	1				
6							
7	196139 14	FRAME & PARTS	1				
8							
9	196119 04	ROTOR/AUGER DRIVE SUB	1				
10	196146 01	ROTOR MTG SUB	1				
11	196097 16	STRIPPING ROTOR R/H ASSY	1				
12	196097 17	STRIPPING ROTOR L/H ASSY	1				
13	196145 02	EMBLEMS AND GUARDS	1				
14	196147 01	DIVIDER SUB	1				
OR	196078 01	TORPEDO DIVIDER SUB	1				
15	RDS-0005	HEADER MONITORING KIT	1				
16	RDS-0001	COMBINE MONITOR KIT	1				
17	196143 14	HEADER LIGHTS SUB (USA ONLY)	1				

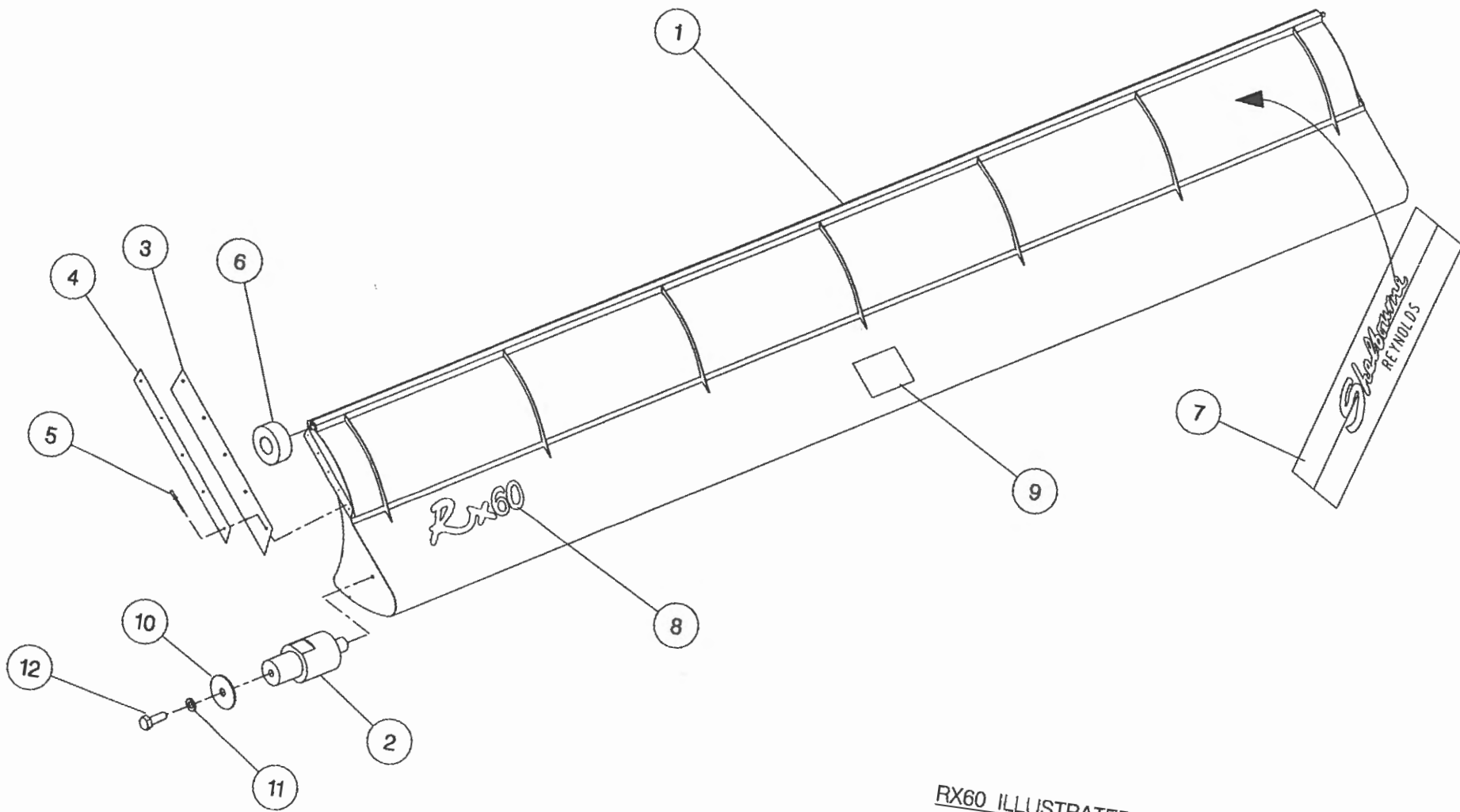


**Shelbourne Reynolds Engineering Limited**

ASSY NUMBER: 196053 34				ASSY DESCRIPTION: ADJ.CROP DEFLECTOR SUB ASSY (CX84)			
ITEM	PART NO	DESCRIPTION	QTY	ITEM	PART NO	DESCRIPTION	QTY
1	192377 01	ADJ.CROP DEFLECTOR (8.4M)	1				
2	190361 01	PIVOT BUSH	2				
3	192037 01	RUBBER SEAL	2				
4	192038 01	CLAMP STRIP	2				
5	POP-0006	POP RIVET	10				
6	191642 01	ROLLER	2				
7	191981 01	EMBLEM (SHEL.REYNOLDS)	1				
8	192735 10	EMBLEM (CX84)	1				
9	192718 01	TRANSFER (NO STEP)	1				
10	190119 05	PLAIN WASHER	2				
11	WSH-0058	WASHER	2				
12	HSS-0140	SETSCREW	2				



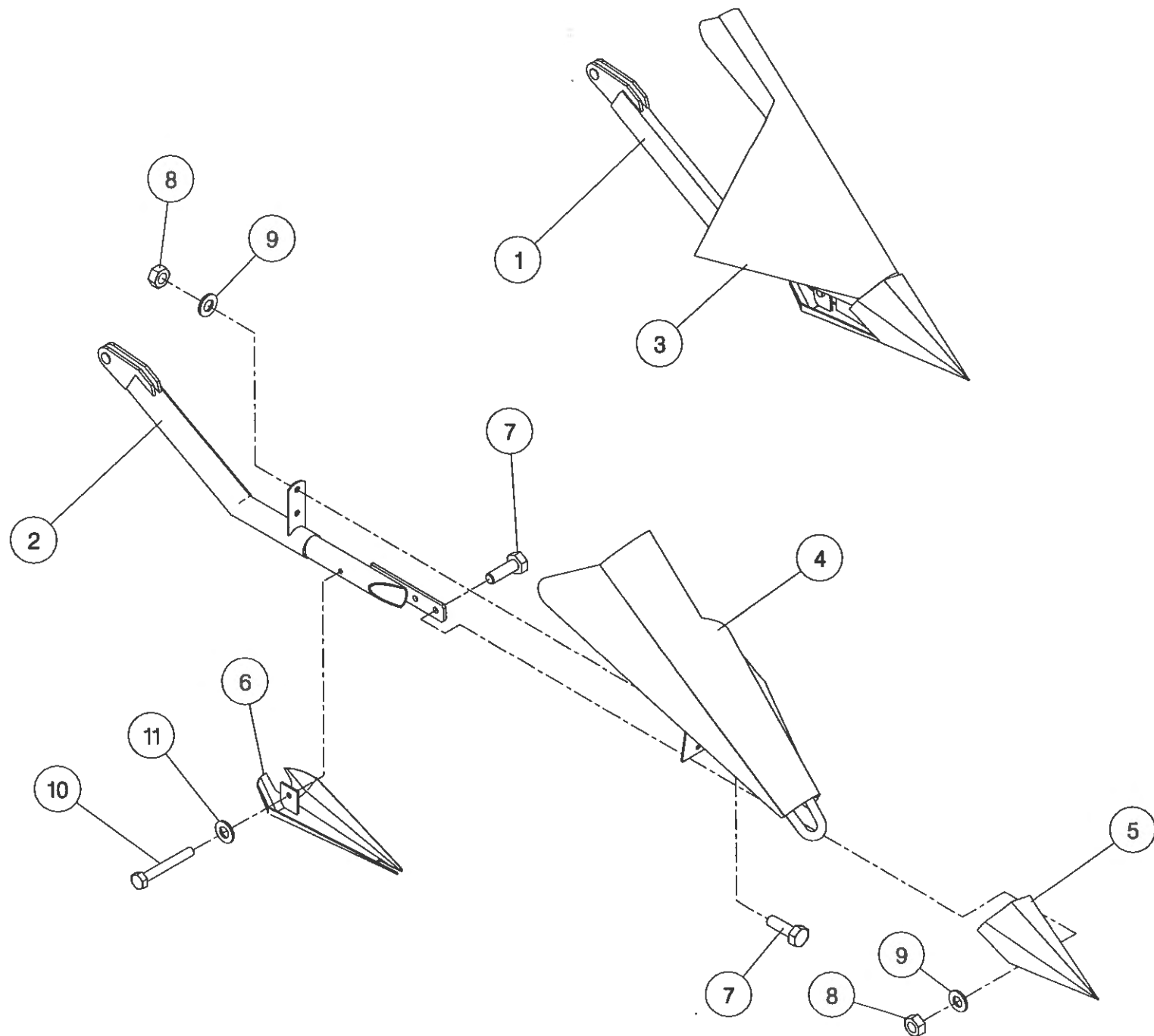
7



RX60 ILLUSTRATED

**Shelbourne Reynolds Engineering Limited**

ASSY NUMBER: 196078 01				ASSY DESCRIPTION: TORPEDO DIVIDERS FOR RX & CX MACHINES			
ITEM	PART NO	DESCRIPTION	QTY	ITEM	PART NO	DESCRIPTION	QTY
1	192533 01	DIVIDER ARM LH	1				
2	192533 02	DIVIDER ARM RH	1				
3	192537 01	DIVIDING PLATE LH	1				
4	192537 02	DIVIDING PLATE RH	1				
5	191770 01	NOSE CONE	2				
6	191862 01	SHOE	2				
7	HSS-0191	SETSCREW	8				
8	NUT-0265	NUT	8				
9	WSH-0015	WASHER	8				
10	HSS-0155	BOLT	2				
11	WSH-0058	WASHER	2				





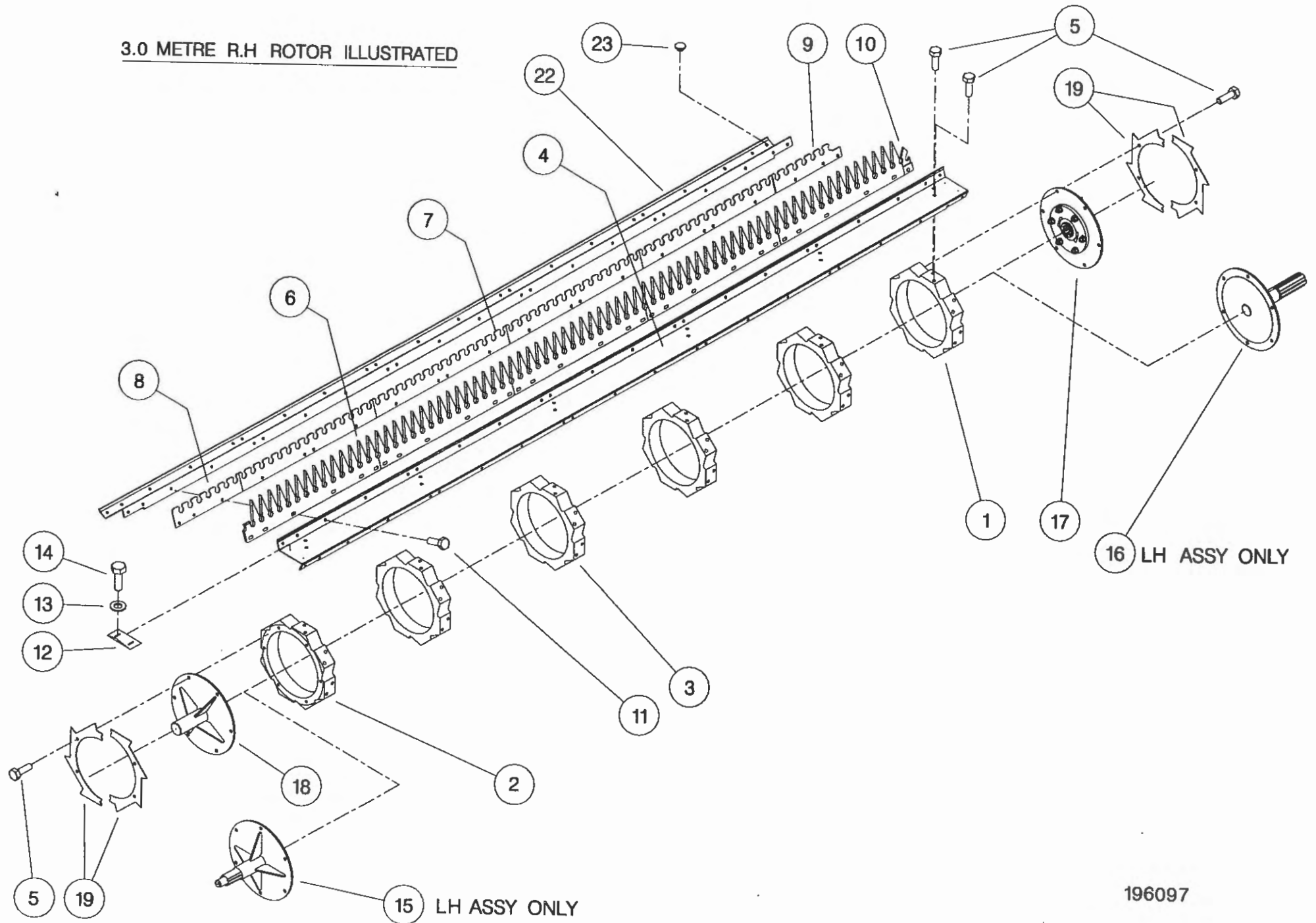
**Shelbourne Reynolds Engineering Limited**

ASSY NUMBER:		ASSY DESCRIPTION:STRIPPING ROTOR ASSY (R/H) 4.2m					
ITEM	PART NO	DESCRIPTION	QTY	ITEM	PART NO	DESCRIPTION	QTY
1	192892 01	OUTER HUB CASTING L.H.	1				
2	192892 02	OUTER HUB CASTING R.H.	1				
3	192892 03	INNER HUB CASTING	6				
4	192890 04	ROTOR SECTION 4.2M	7				
5	HSSG10204	SET SCREW	140				
6	191968 02	ELITE ELEMENT	56				
OR	193087 01	ELITE ELEMENT(SLOTTED)	56				
7	192291 01	ANTI WEAR STRIP CTR.	48				
OR	192291 07	S-TYPE STRIP CTR	48				
8	192291 02	ANTI WEAR STRIP END	8				
OR	192291 08	S-TYPE STRIP END	8				
9	192291 03	ANTI WEAR STRIP CTR END	8				
OR	192291 09	S-TYPE STRIP CTR END	8				
10	191865 02	CENTRE FINGER (RH)	8				
11	HSSF08174	SET SCREW	240				
12	192679 01	ANTI WRAP PLATE	8				
13	WSH-1034	PENNY WASHER	16				
14	SCW-5180	SELF TAP.SCREW	16				
15							
16							
17	KIT-00976	BALL COUPLING KIT	1				
18	192899 01	IDLE SHAFT W/ASSY	1				
19	192959 01	OUTER CLAMP RING (HALF)	4				
20							
21							
22	193117 04	ROTOR SECTION 4.2M (HOLE)	1				
23	BPG-00200	BODY PLUG	1				

**Shelbourne Reynolds Engineering Limited**

ASSY NUMBER: 196097 17				ASSY DESCRIPTION:STRIPPING ROTOR ASSY (L/H) 4.2m			
ITEM	PART NO	DESCRIPTION	QTY	ITEM	PART NO	DESCRIPTION	QTY
1	192892 01	OUTER HUB CASTING L.H.	1				
2	192892 02	OUTER HUB CASTING R.H.	1				
3	192892 03	INNER HUB CASTING	6				
4	192890 04	ROTOR SECTION 4.2M	8				
5	HSSG10204	SET SCREW	140				
6	191968 02	ELITE ELEMENT	56				
OR	193087 01	ELITE ELEMENT(SLOTTED)	56				
7	192291 01	ANTI WEAR STRIP CTR.	48				
OR	192291 07	S-TYPE STRIP CTR	48				
8	192291 02	ANTI WEAR STRIP END	8				
OR	192291 08	S-TYPE STRIP END	8				
9	192291 03	ANTI WEAR STRIP CTR END	8				
OR	192291 09	S-TYPE STRIP CTR END	8				
10	191865 01	CENTRE FINGER (LH)	8				
11	HSSF08174	SET SCREW	240				
12	192679 01	ANTI WRAP PLATE	8				
13	WSH-1034	PENNY WASHER	16				
14	SCW-5180	SELF TAP.SCREW	16				
15	193103 01	CENTRE SHAFT W/ASSY	1				
16	192897 01	DRIVE SHAFT W/ASSY	1				
17							
18							
19	192959 01	OUTER CLAMP RING (HALF)	4				
20							
21							

3.0 METRE R.H ROTOR ILLUSTRATED

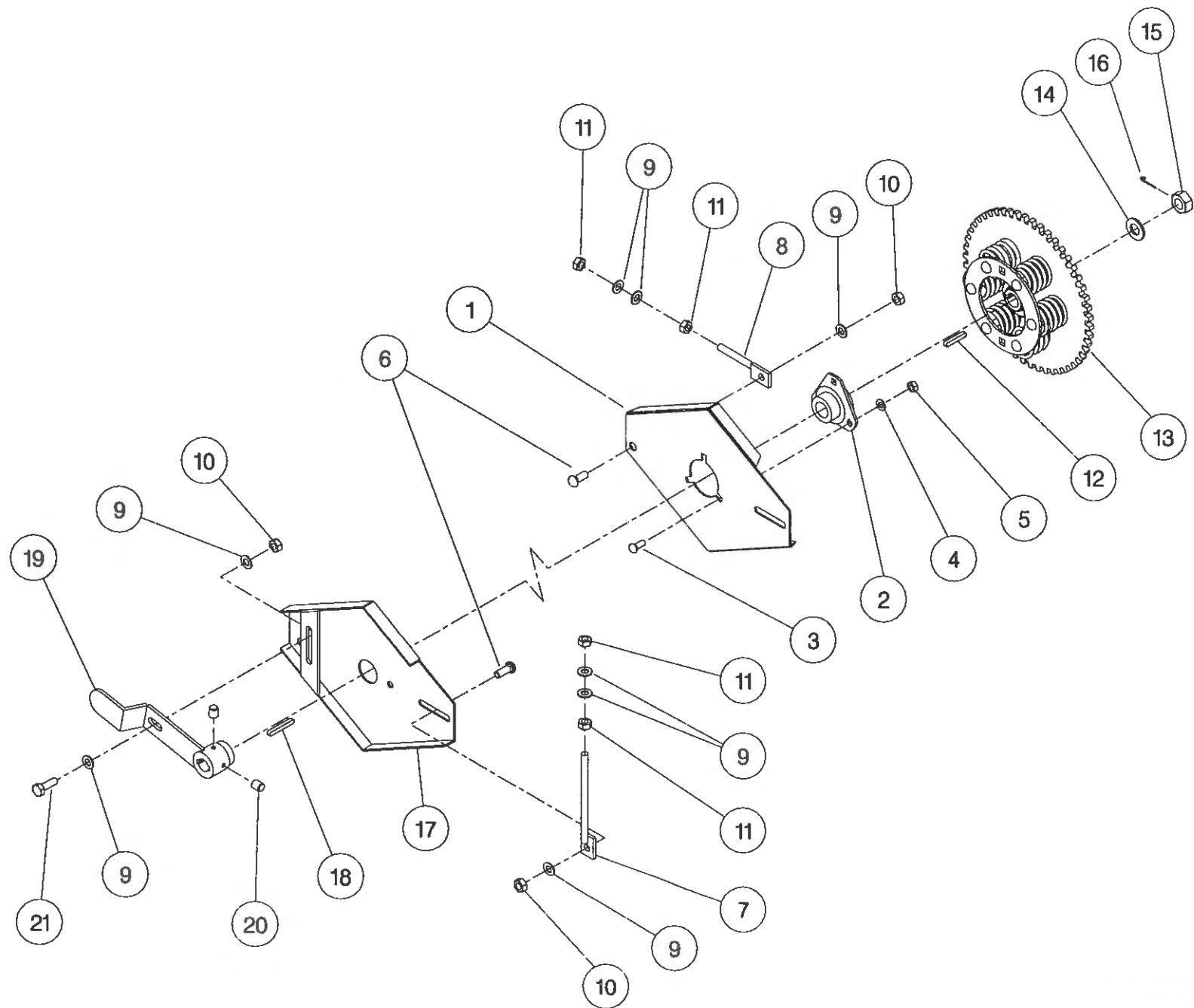


196097

**Shelbourne Reynolds Engineering Limited**

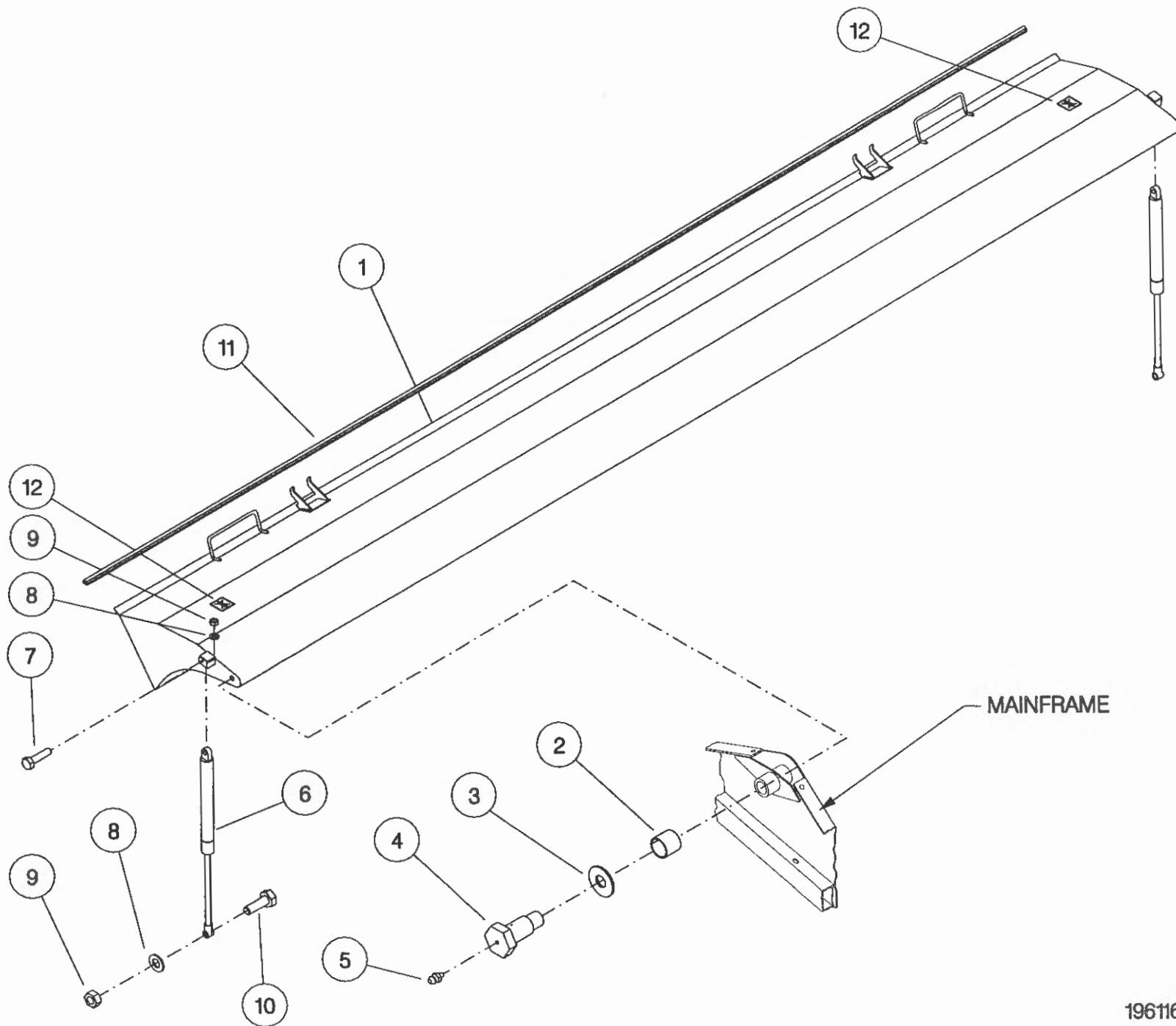
ASSY NUMBER: 196102 02				ASSY DESCRIPTION: AUGER MOUNTING/DRIVE KIT (CX) 1996			
ITEM	PART NO	DESCRIPTION	QTY	ITEM	PART NO	DESCRIPTION	QTY
1	200035 03	SUPPORT PLATE L.H.	1				
2	BRG-0240	BEARING	1				
3	BLT-3745	COACH BOLT	3				
4	WSH-0015	PLAIN WASHER	3				
5	NUT-0265	NYLOC NUT	3				
6	BLT-3790	COACH BOLT	4				
7	192636 06	VERTICAL ADJUSTER	2				
8	192636 01	HORIZONTAL ADJUSTER	2				
9	WSH-0018	PLAIN WASHER	14				
10	NUT-0269	NYLOC NUT	5				
11	NUT-0170	PLAIN NUT	8				
12	K0807050	KEY	1				
13	KIT-00109	AUGER SLIP CLUTCH (SEE PARTS LIST KIT-00109)	1				
14	WSH-0030	PLAIN WASHER	1				
15	NUT-0580	CASTLE NUT	1				
16	PIN-1150	SPLIT PIN	1				
17	200038 01	SUPPORT PLATE R.H.	1				
18	K0807060	KEY	1				
19	200120 03	ADJUSTER ASSY	1				
20	SCW-4535	GRUB SCREW	2				
21	HSS-0241	SET SCREW	1				





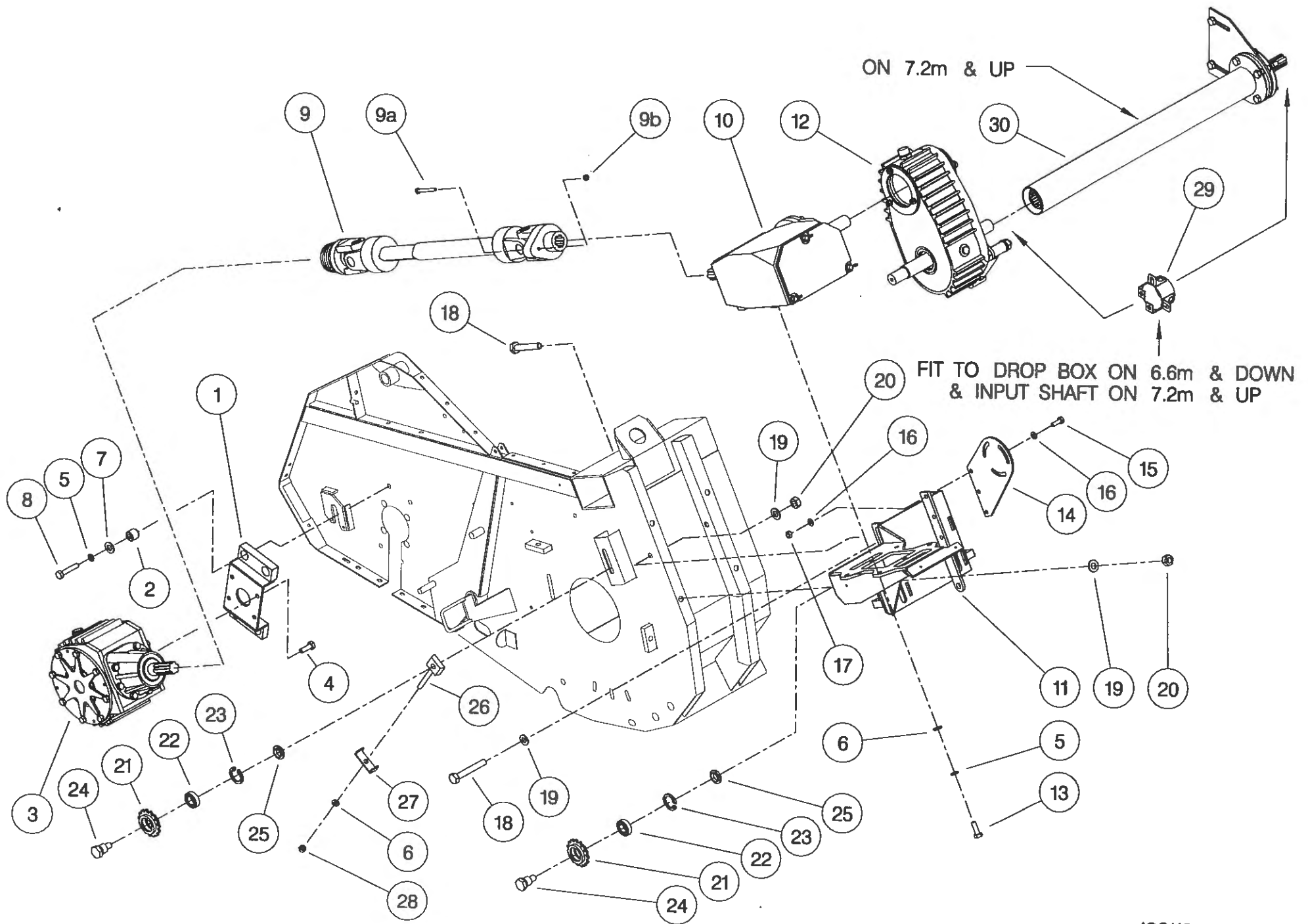
**Shelbourne Reynolds Engineering Limited**

ASSY NUMBER: 196116 14				ASSY DESCRIPTION: TOP DOOR COWL ASSY (CX84) 1997			
ITEM	PART NO	DESCRIPTION	QTY	ITEM	PART NO	DESCRIPTION	QTY
1	193253 01	COWL ASSY (CX84)	1				
2	BSH-3030	BUSH	2				
3	192813 01	LARGE WASHER	2				
4	192812 01	COWL PIN	2				
5	NIP-0001	GREASE ZERK	2				
6	GSTA14407	GAS STRUTT	2				
7	BLTA10410	BOLT	2				
8	WSH-0015	WASHER	4				
9	NUT-0265	NUT	4				
10	BLTA10290	BOLT	2				
11	EDS-11600	SEAL STRIP	8.4m				
12	192718 01	TRANSFER (NO STEP)	2				



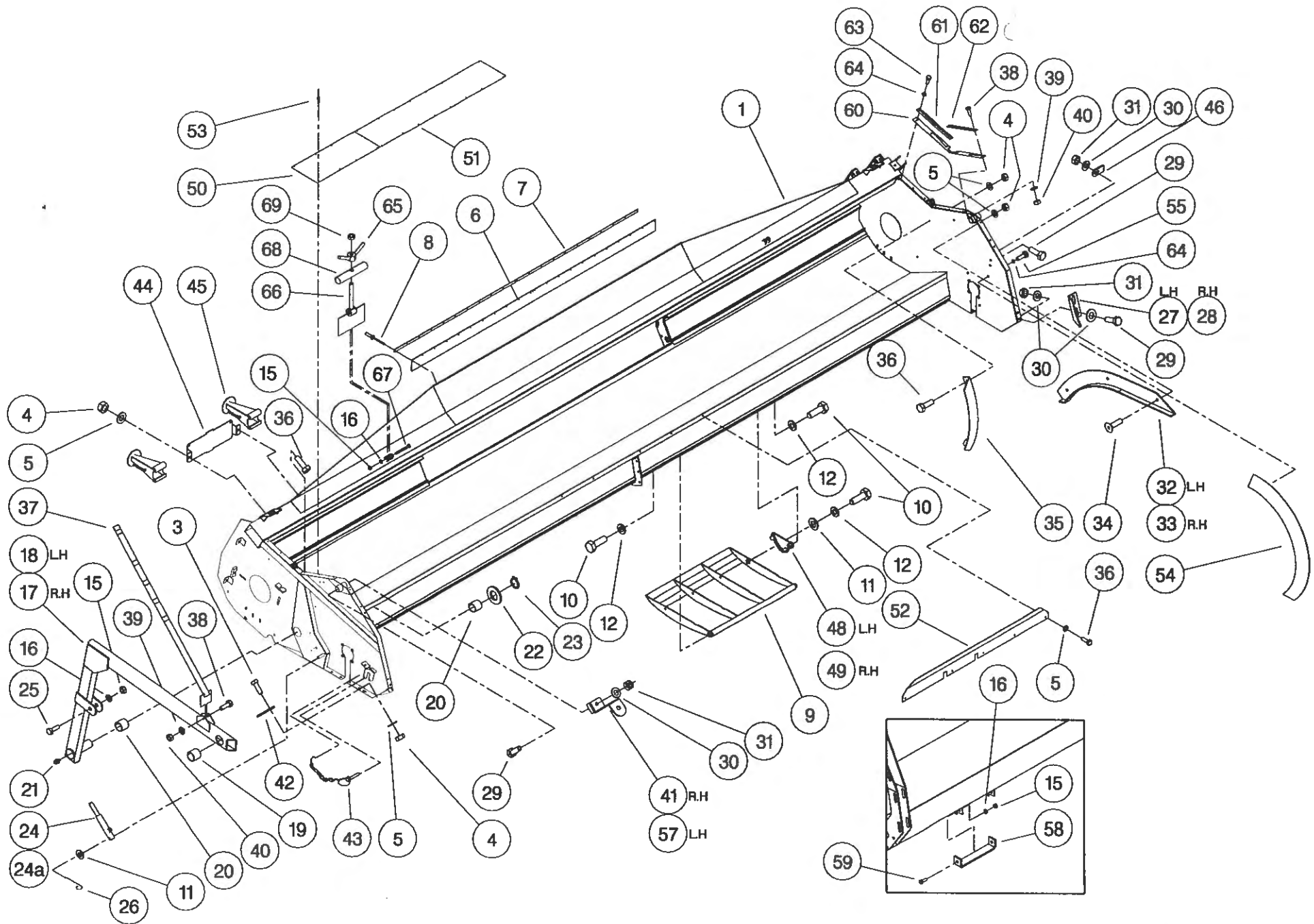
**Shelbourne Reynolds Engineering Limited**

ASSY NUMBER:		196119 04	ASSY DESCRIPTION: ROTOR/AUGER DRIVE 1997 (8.4M)				
ITEM	PART NO	DESCRIPTION	QTY	ITEM	PART NO	DESCRIPTION	QTY
1	191652 01	GEARBOX BRACKET	1	29	KIT-00525	PTO GUARD KIT	1
2	BSH-1530	BUSH	4	30	KIT-00412	DROPBOX INPUT SHAFT KIT	1
3	GEA-0095	BEVEL GEARBOX (SEE PARTS LIST GEA-0095)	1			(CX84 ONLY)	
4	HSSG12174	SET SCREW	4				
5	WSH-0065	SPRING WASHER	10				
6	WSH-0018	PLAIN WASHER	8				
7	190119 04	PLAIN WASHER	4				
8	BLTA12290	BOLT	4				
9	PTO-09010	POWER SHAFT	1				
9a	BLT-2158	SHEAR BOLT					
9b	NUT-0164	NUT					
10	GEA-0135	FIVE SPEED GEARBOX ASSY (SEE PARTS LIST GEA-0135)	1				
11	192091 01	GEARBOX BRACKET (ALUM./FINS)	1				
12	GEA-0101	DROPBOX ASSY (SEE PARTS LIST GEA-0101)	1				
13	HSS-0238	SET SCREW	6				
14	191680 01	DROP BOX SUPPORT PLATE	1				
15	HSS-0194	SET SCREW	3				
16	WSH-0015	PLAIN WASHER	6				
17	NUT-0265	NYLOC NUT	3				
18	BLT-2316	BOLT	4				
19	WSH-0024	PLAIN WASHER	6				
20	NUT-0271	NYLOC NUT	4				
21	131041 01	SPROCKET IDLER	2				
22	BRG-1995	BEARING	2				
23	CIR-0470	CIRCLIP	2				
24	190060 06	IDLER SPINDLE	2				
25	191040 01	IDLER SPACER	2				
26	191777 01	IDLER ADJ SCREW	1				
27	191774 01	PLATE	1				
28	NUT-0269	NUT	1				



**Shelbourne Reynolds Engineering Limited**

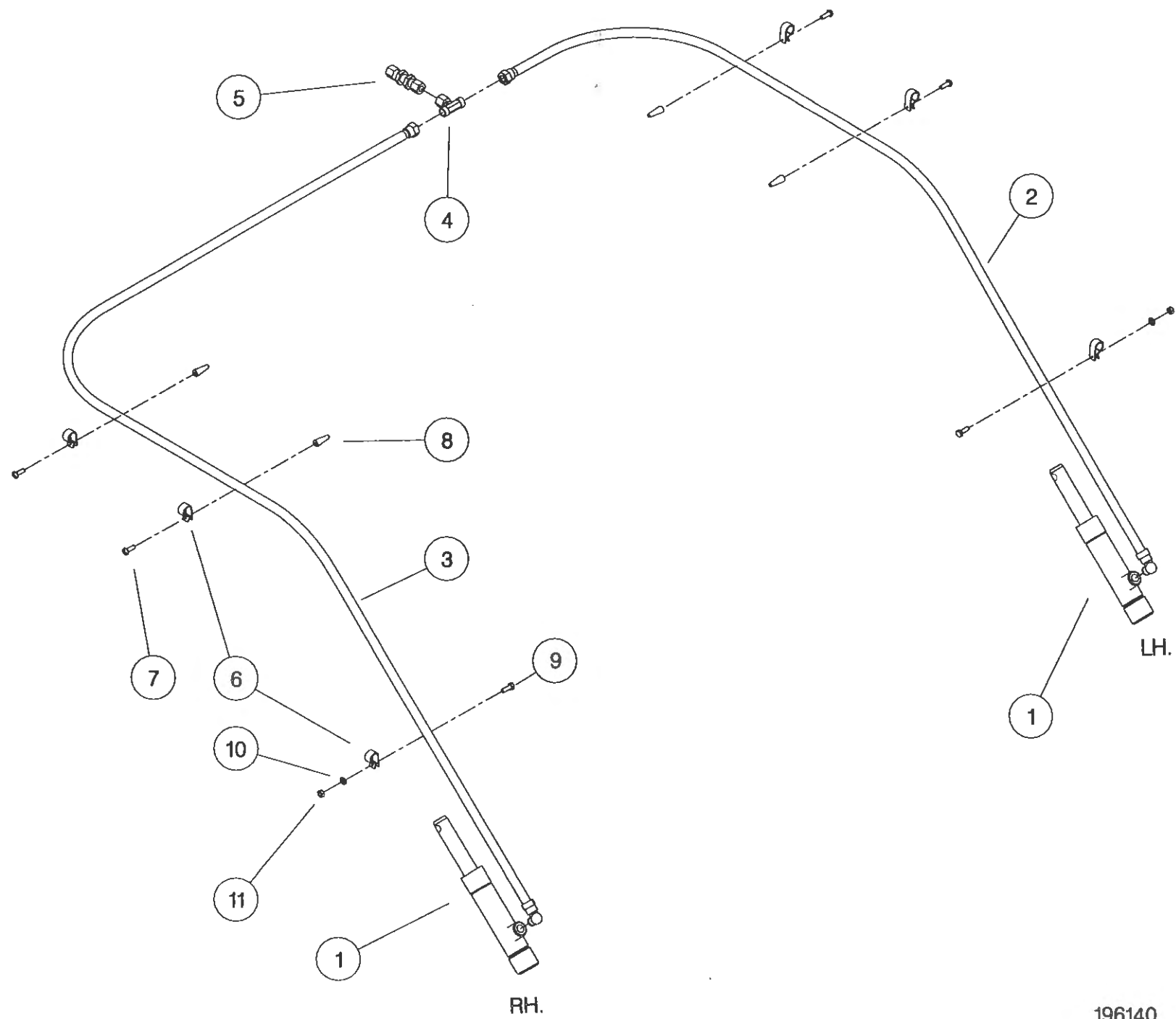
ASSY NUMBER: 196139 14				ASSY DESCRIPTION: FRAME & PARTS SUB (CX84-1998)			
ITEM	PART NO	DESCRIPTION	QTY	ITEM	PART NO	DESCRIPTION	QTY
1	193438 01	CX84 MAIN FRAME ASSY	1	38	HSS-0092	SETSCREW	1
2				39	WSH-0009	PLAIN WASHER	7
3	BLT-4710	COACH BOLT	2	40	NUT-0260	NYLOC NUT	7
4	NUT-0263	NUT	24	41	193480 01	SUPPORT BRACKET	1
5	WSH-0012	WASHER	34	42	192543 01	CROP DIVIDER ADJ. PLATE	2
6	191340 01	RUBBER SEAL	1	43	PIN-01790	LYNCH PIN & CHAIN	2
7	191339 01	CLAMP STRIP	2	44	193221 01	HEADER STAND BRACKET	1
8	POP-0006	POP RIVET	22	45	193222 01	HEADER FRONT STAND	2
9	193219 01	SKID	4	46	192550 01	NOSE ARM STOP PLATE	1
10	HSS-0316	SET SCREW	24	47			
11	WSH-0024	WASHER	10	48	192954 01	SKID ADJUSTER PLATE LH	4
12	WSH-0070	WASHER	24	49	192954 02	SKID ADJUSTER PLATE RH	4
13				50	192754 01	SLIP PLATE (SHORT)	2
14				51	192754 02	SLIP PLATE	6
15	NUT-0269	NUT	8	52	192755 01	SPILL STRIP	1
16	WSH-0018	WASHER	8	53	POP-0007	POP RIVET	112
17	191259 02	ADJ COWL SUPPORT ARM R.H	1	54	193363 01	ROTOR DEFLECTOR	2
18	191259 01	ADJ COWL SUPPORT ARM L.H	1	55	HSS-0084	SETSCREW	6
19	BSH-3030	BUSH	2	56			
20	BSH-3070	BUSH	4	57	193480 02	SUPPORT BRACKET LH	1
21	NIP-0001	GREASE ZERK	2	58	193214 01	STRAP	2
22	WSH-1547	WASHER	2	59	HSS-0238	SETCREW	4
23	CIR-1150	CIRCLIP	2	60	193235 01	RUBBER SEAL	2
24	193506 01	HYDRAULIC RAM	2	61	193232 01	SEAL CLAMP	2
24a	RMSK00030	SEAL KIT		62	193233 01	SEAL CLAMP	2
25	HSS-0260	SET SCREW	2	63	SCW-4960	BUTT.HD.SKT.SCREW	12
26	PIN-1150	SPLIT PIN	2	64	WSH-0056	WASHER	12
27	192193 01	ADJ COWL STOP L.H	1	65	193244 01	RETAINING NUT	2
28	192193 02	ADJ COWL STOP R.H	1	66	193248 01	RETAINING SCREW	2
29	HSS-0194	SET SCREW	7	67	BLTA12380	BOLT	2
30	WSH-0015	WASHER	11	68	193251 01	RETAINING BAR	2
31	NUT-0265	NUT	7	69	NUT-0170	PLAIN NUT	2
32	192442 01	RUNNER ASSY L.H	1				
33	192442 02	RUNNER ASSY R.H	1				
34	SCW-1735	SCREW	6				
35	192304 01	AUGER END DEFLECTOR	2				
36	HSS-0140	SET SCREW	16				
37	192494 01	INDICATOR ROD	1				



**Shelbourne Reynolds Engineering Limited**

ASSY NUMBER: 196140 14				ASSY DESCRIPTION: HYDRAULIC CIRCUIT SUB 8.4M			
ITEM	PART NO	DESCRIPTION	QTY	ITEM	PART NO	DESCRIPTION	QTY
1	REF	HYDRAULIC RAM	2				
2	HHBC40610	HYDRAULIC HOSE LH	1				
3	HHBC65610	HYDRAULIC HOSE RH	1				
4	HPPD07100	HYD.TEE FITTING	1				
5	FIT-0213	HYD.BULKHEAD FITT.	1				
6	CLP-01012	P CLIP	6				
7	SCW-5180	SELF TAP SCREW	4				
8	PFS-00500	PANEL FASTENER	4				
9	HSS-0086	SETSCREW	2				
10	WSH-0009	PLAIN WASHER	2				
11	NUT-0260	NYLOC NUT	2				



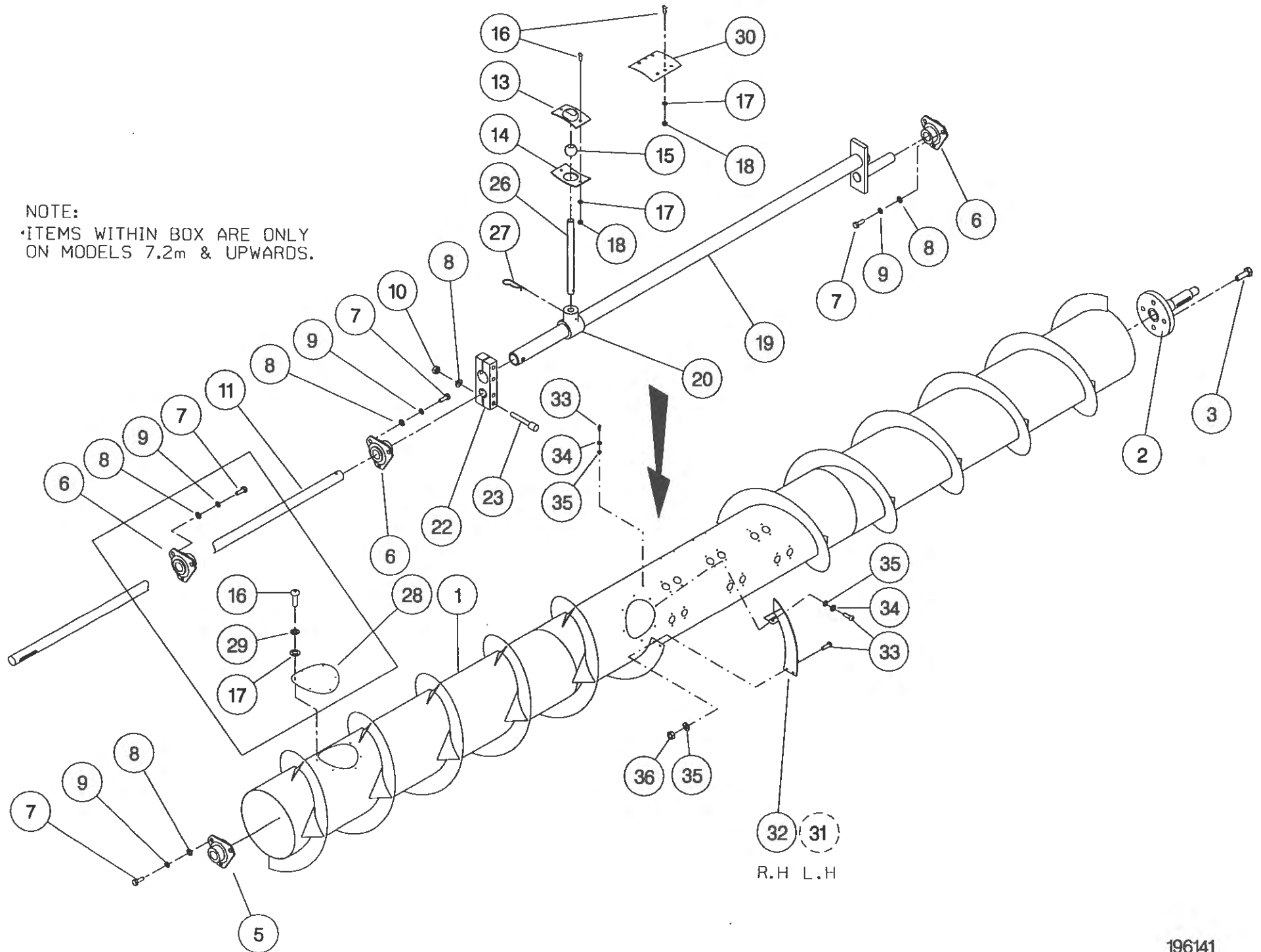


**Shelbourne Reynolds Engineering Limited**

ASSY NUMBER: 196141 14				ASSY DESCRIPTION: AUGER ASSY 8.4M (1998)			
ITEM	PART NO	DESCRIPTION	QTY	ITEM	PART NO	DESCRIPTION	QTY
1	193497 01	AUGER W.ASSY.	1	27	AUG-03000	HAIRPIN COTTER	
2	192011 01	AUGER DRIVE SHAFT	1			(16 FINGERS OPTION)	16
3	HSSF12204	SET SCREW	4	OR		(20 FINGERS OPTION)	20
4				OR		(24 FINGERS OPTION)	24
5	BRG-2020	BEARING	1	28	193203 01	COVER PLATE	3
6	BRG-0240	BEARING	3	29	WSH-0056	SPRING WASHER	18
7	HSS-0191	SET SCREW	12	30	190735 01	BLANKING PLATE	
8	WSH-0015	PLAIN WASHER	16			(16 FINGERS OPTION)	8
9	WSH-0061	SPRING WASHER	12	OR		(20 FINGERS OPTION)	4
10	NUT-0265	NYLOC NUT	4	OR		(24 FINGERS OPTION)	0
11	192363 01	AUGER SHAFT	1	31	192227 01	AUGER FLIGHT EXTENSION LH	1
12				32	192227 02	AUGER FLIGHT EXTENSION RH	1
13	AUG-01000	UPPER FINGER PL. (CONCAVE)		33	SCBA08172	BUT. SCKT HD SCREW	8
		(16 FINGERS OPTION)	16	34	WSH-0058	WASHER	4
OR		(20 FINGERS OPTION)	20	35	WSH-0012	WASHER	8
OR		(24 FINGERS OPTION)	24	36	NUT-0263	NUT	4
14	AUG-01500	LOWER FINGER PL. (CONVEX)					
		(16 FINGERS OPTION)	16				
OR		(20 FINGERS OPTION)	20				
OR		(24 FINGERS OPTION)	24				
15	AUG-02000	FINGER GUIDE (BALL)					
		(16 FINGERS OPTION)	16				
OR		(20 FINGERS OPTION)	20				
OR		(24 FINGERS OPTION)	24				
16	SCW-4960	BUTT.HD.SKT.SCREW	66				
17	WSH-0009	PLAIN WASHER	66				
18	NUT-0260	NYLOC NUT	48				
19	192368 01	AUGER CRANK	1				
20	AUG-02500	FINGER HOLDER	24				
21							
22	192364 01	AUGER CLAMP	1				
23	SCCA10412	CAP HD SKT SCREW	4				
24							
25							
26	192310 01	FINGER					
		(16 FINGERS OPTION)	16				
OR		(20 FINGERS OPTION)	20				
OR		(24 FINGERS OPTION)	24				

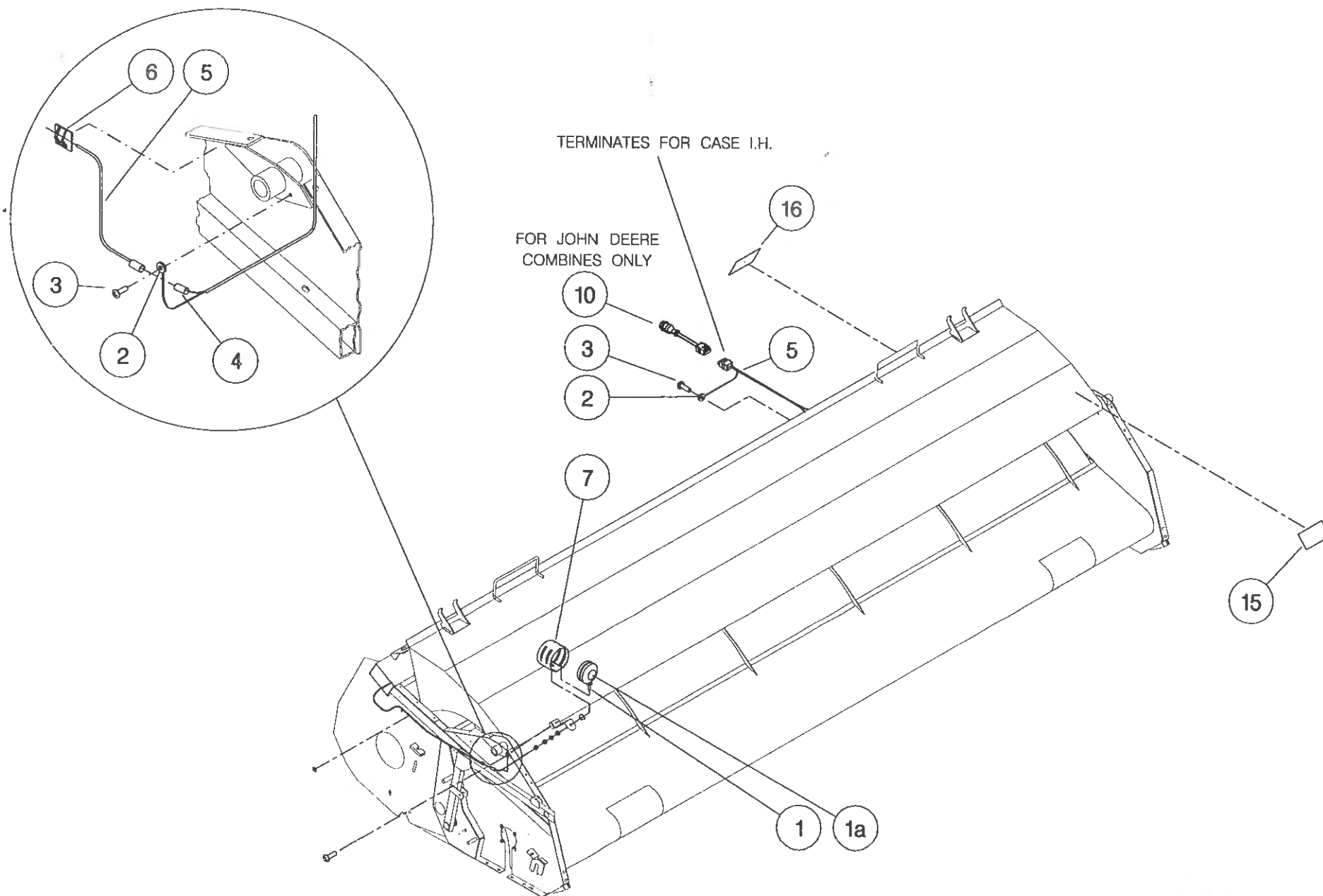
## NOTE:

ITEMS WITHIN BOX ARE ONLY  
ON MODELS 7.2m & UPWARDS.



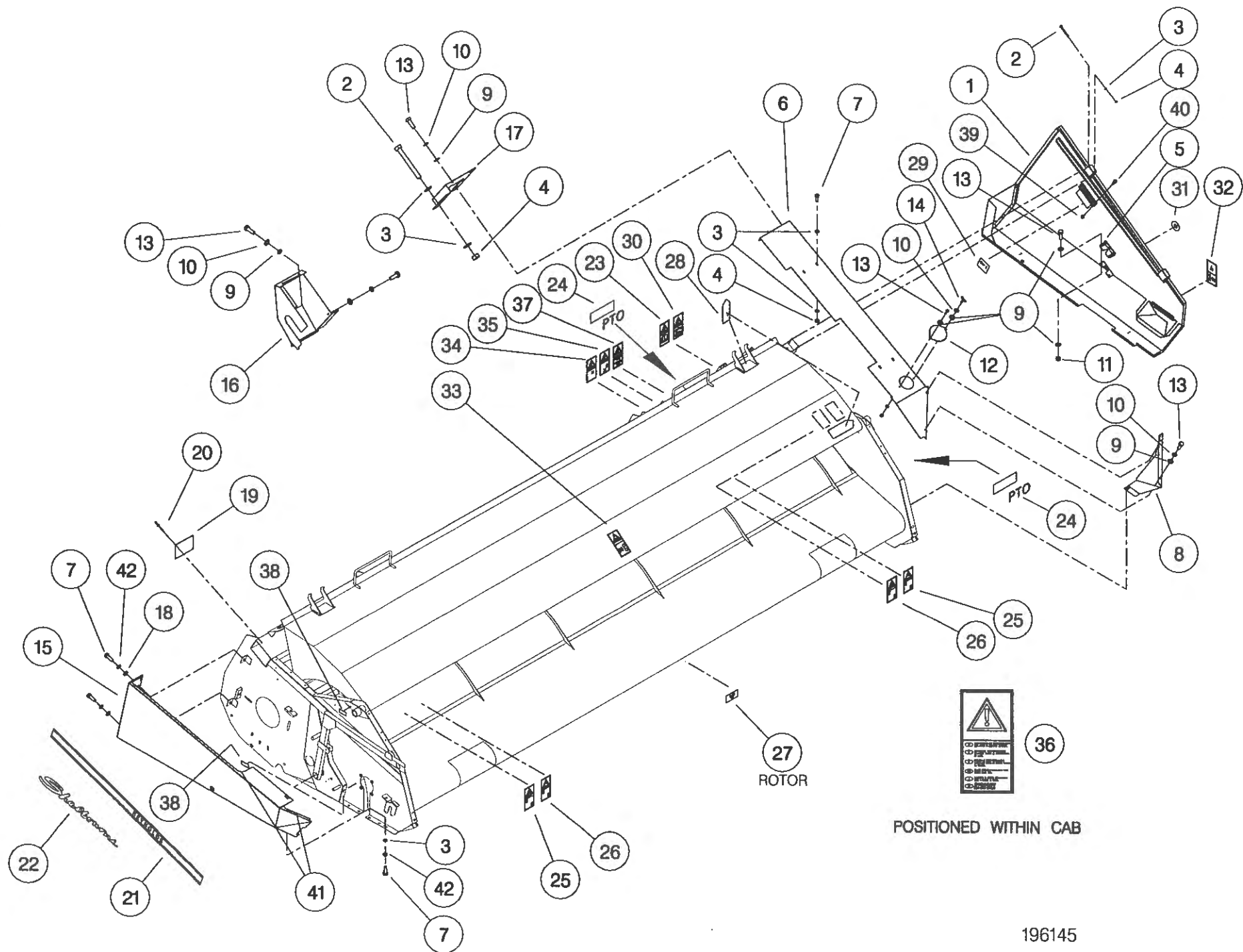
**Shelbourne Reynolds Engineering Limited**

ASSY NUMBER: 196143 14				ASSY DESCRIPTION: HEADER LIGHTS SUB 8.4M			
ITEM	PART NO	DESCRIPTION	QTY	ITEM	PART NO	DESCRIPTION	QTY
1	LMP-10501	INDICATOR LIGHT ASSY	2				
1a	BLB-0075	BULB	2				
2	ETM-00440	LOOP TERMINAL	2				
3	SCW-5180	SELF TAP SCREW	3				
4	ETM-00560	MALE BULLET TERM.	2				
5	193515 01	WIRE LOOM & PLUG ASSY	1				
6	CFC-00500	FIXING CLIP	6				
7	193567 01	INDICATOR GUARD	2				
8							
9							
10	193516 01	LOOM & PLUG ASSY (JD ONLY)	1				
11							
12							
13							
14							
15	TPE-00250	REFLECTIVE TAPE - AMBER	0.1				
15	TPE-00250	REFLECTIVE TAPE - AMBER	0.1				
16	TPE-00251	REFLECTIVE TAPE - RED	0.1				
16	TPE-00251	REFLECTIVE TAPE - RED	0.1				



**Shelbourne Reynolds Engineering Limited**

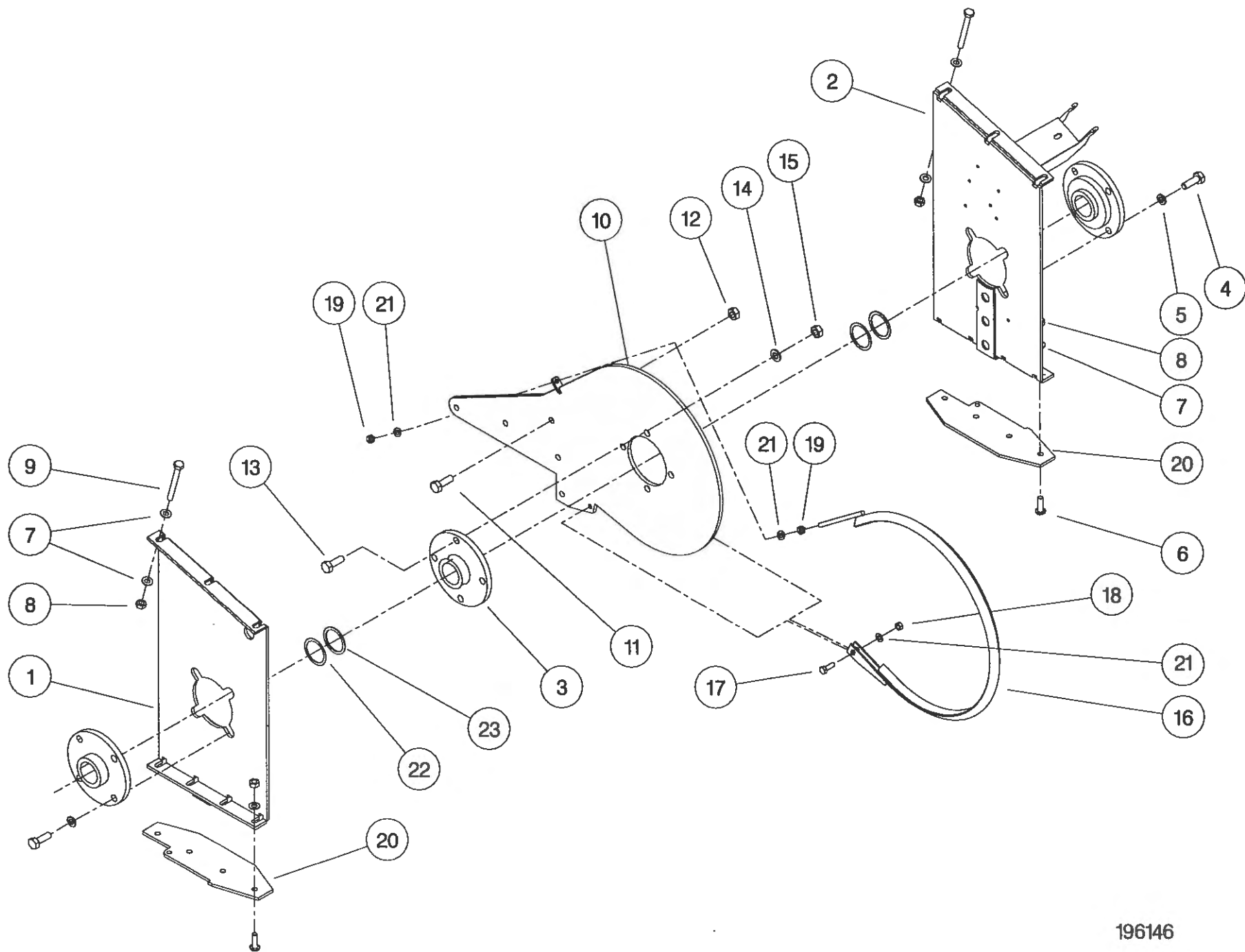
ASSY NUMBER: 196145 02				ASSY 'DESCRIPTION: CX EMBLEMS AND GUARDS SUB (1998)			
ITEM	PART NO	DESCRIPTION	QTY	ITEM	PART NO	DESCRIPTION	QTY
1	193252 01	L.H.GUARD	1	39	NUT-0164	NUT	10
2	BLTA08470	BOLT	3	40	BLTA08350	SHEARBOLT	10
3	WSH-0012	PLAIN WASHER	12	41	EDS-11400	EDGING STRIP	1.5
4	NUT-0263	NYLOC NUT	8	42	WSH-0058	WASHER	4
5	LTC-00040	SLAM LATCH	1				
6	193016 01	L.H. TOP COVER	1				
7	HSS-0140	SET SCREW	9				
8	192570 01	FRONT DEFLECTOR L.H.	1				
9	WSH-0009	PLAIN WASHER	10				
10	WSH-0056	SPRING WASHER	8				
11	NUT-0260	NYLOC NUT	3				
12	191355 01	COVER	1				
13	HSS-0084	SET SCREW	12				
14	SCW-4700	WING SCREW	1				
15	193478 01	R.H.GUARD	1				
16	192555 01	REAR DRIVE GUARD	1				
17	193009 01	REAR UPPER GUARD	1				
18	WSH-1038	PENNY WASHER	3				
19	191359 01	IDENTIFICATION PLATE	1				
20	POP-0006	POP RIVET	4				
21	191983 01	EMBLEM (STRIPES & REYNOLDS)	2				
22	191982 01	EMBLEM (SHELBOURNE)	2				
23	610257 01	EMBLEM (READ MANUAL)	1				
24	127075 12	EMBLEM (GREASE 10 HOURS)	2				
25	193388 01	EMBLEM (FLYING OBJECTS)	2				
26	193389 01	EMBLEM (KEEP AWAY)	2				
27	193395 01	EMBLEM (TENSILOCK)	4				
28	190702 04	EMBLEM (SLING POINT)	4				
29	192839 01	EMBLEM (SHEARBOLT PART No.)	1				
30	610250 01	EMBLEM (SAFETY MAINTENANCE)	1				
31	192953 01	EMBLEM (1/4 TURN)	1				
32	193392 01	EMBLEM (STOP ENG BEFORE...)	1				
33	193393 01	EMBLEM (STOP ENG BEFORE...)	1				
34	193390 01	EMBLEM (DONT HANG CHAIN)	1				
35	193391 01	EMBLEM (PTO GUARD)	1				
36	193394 01	EMBLEM (ENGAGE STRIP ROTOR)	1				
37	193387 01	EMBLEM (AUGER/ROTOR SPEED)	1				
38	127075 16	EMBLEM (GREASE 50 HOURS)	6				



**Shelbourne Reynolds Engineering Limited**

ASSY NUMBER: 196146 01				ASSY DESCRIPTION: CX RANGE RTR MTG SUB ASSY (1998)			
ITEM	PART NO	DESCRIPTION	QTY	ITEM	PART NO	DESCRIPTION	QTY
1	193477 01	ROTOR MTG PLATE R.H	1				
2	193015 01	ROTOR MTG PLATE L.H	1				
3	BRG-3275	BEARING	3				
4	HSS-0235	SETSCREW	8				
5	WSH-0065	WASHER	8				
6	SCW-0515	SCREW	8				
7	WSH-0015	WASHER	20				
8	NUT-0265	NUT	14				
9	BLTA10520	BOLT	6				
10	193225 01	DIVISION PLATE	1				
11	BLTA12290	BOLT5					
12	NUTA07120	AERO-TIGHT NUT	5				
13	HSS-0241	SETSCREW	4				
14	WSH-0018	WASHER	4				
15	NUT-0269	NUT	4				
16	192502 01	VEE STRIP ASSY	1				
17	HSS-0140	BOLT	1				
18	NUT-0263	NYLOC NUT	1				
19	NUT-0164	NUT PLAIN	2				
20	193220 01	DIVIDING PLATE	2				
21	WSH-0012	WASHER	3				
22	192876 01	SHIM (1mm THICK)					
23	192876 02	SHIM (2mm THICK)					

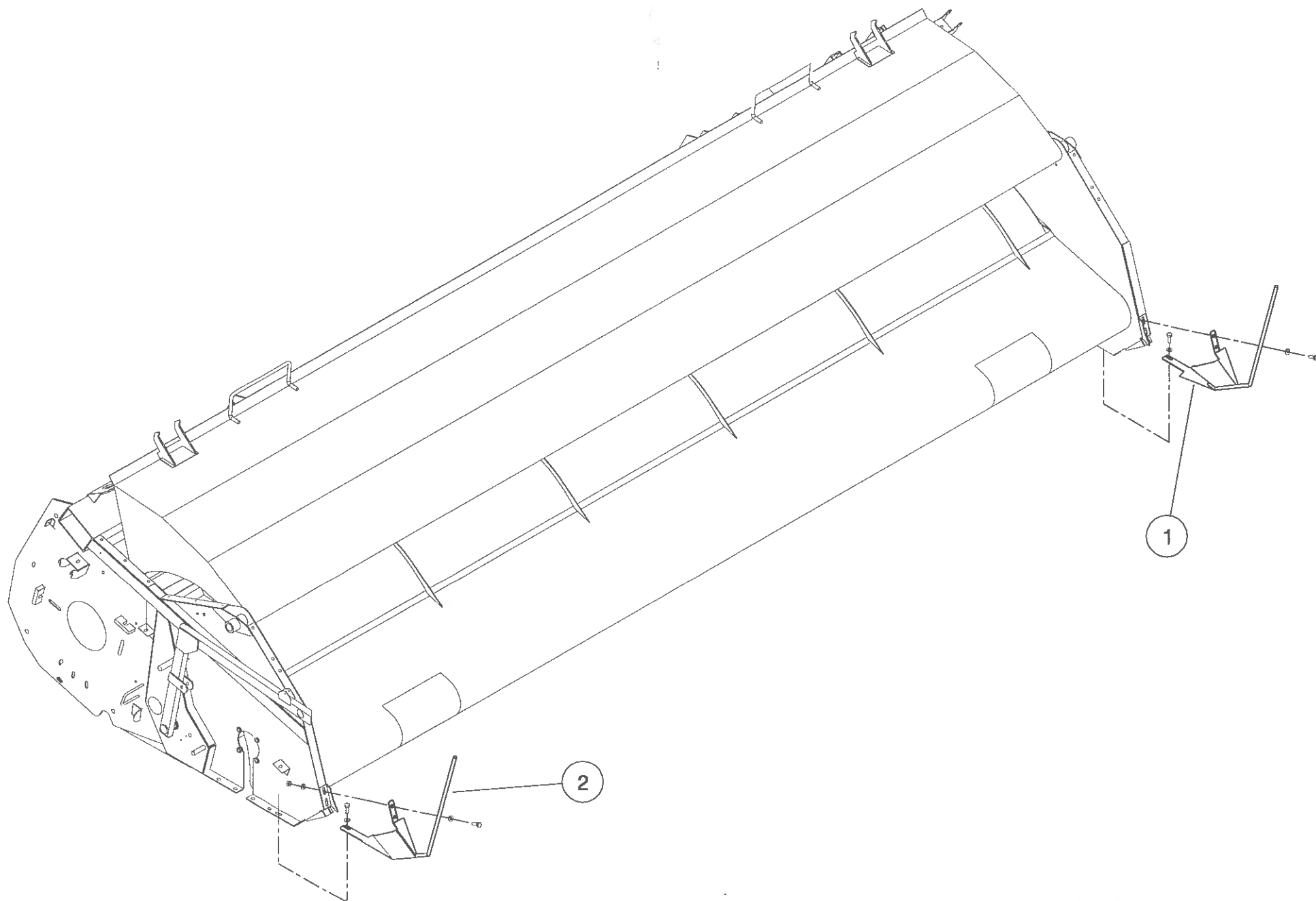




196146

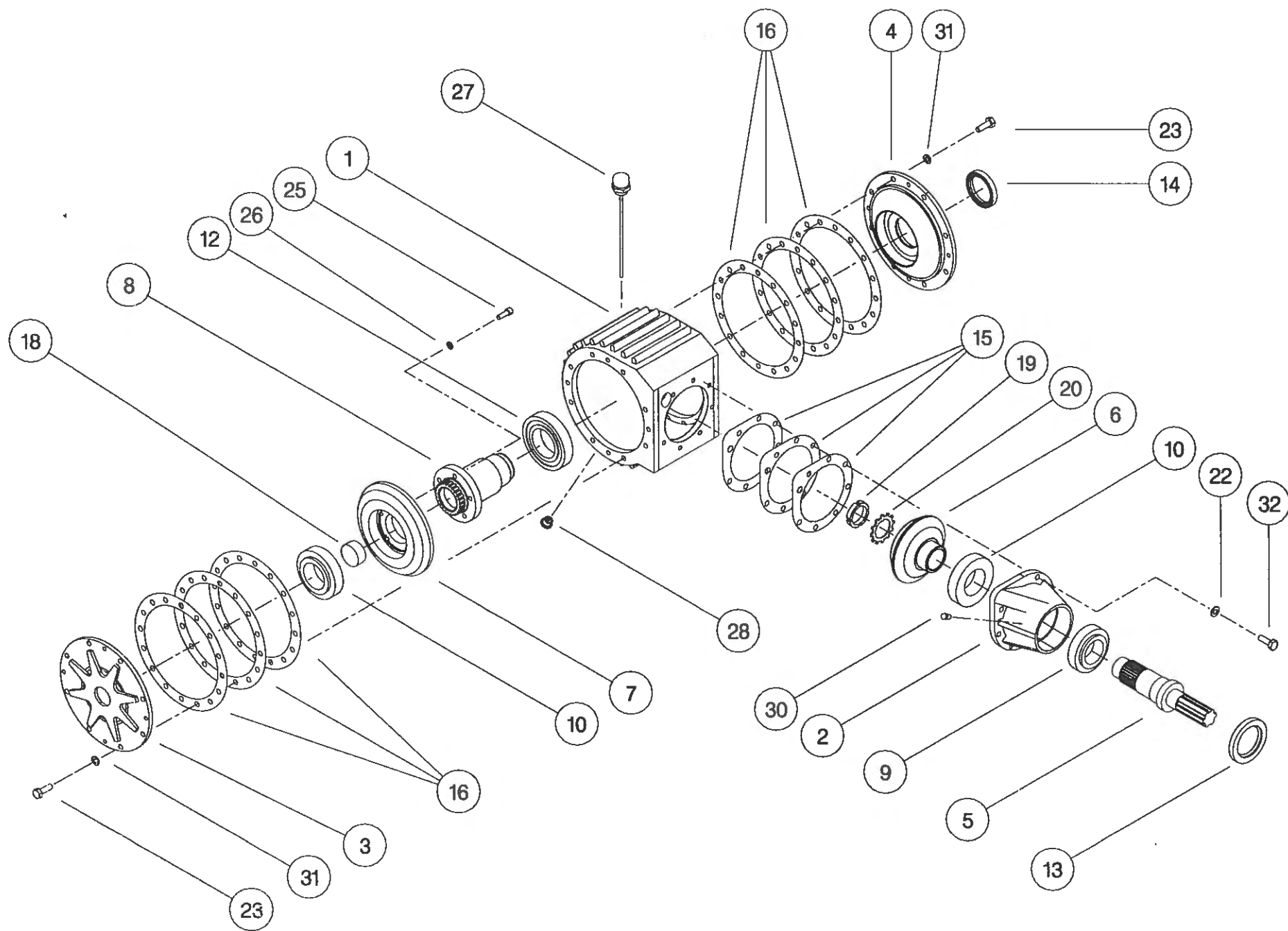
**Shelbourne Reynolds Engineering Limited**

ASSY NUMBER: 196147 01				ASSY DESCRIPTION: FIXED DIVIDER SUB (CX 1998)			
ITEM	PART NO	DESCRIPTION	QTY	ITEM	PART NO	DESCRIPTION	QTY
1	193523 01	FIXED DIVIDER LH	1				
2	193523 02	FIXED DIVIDER RH	1				



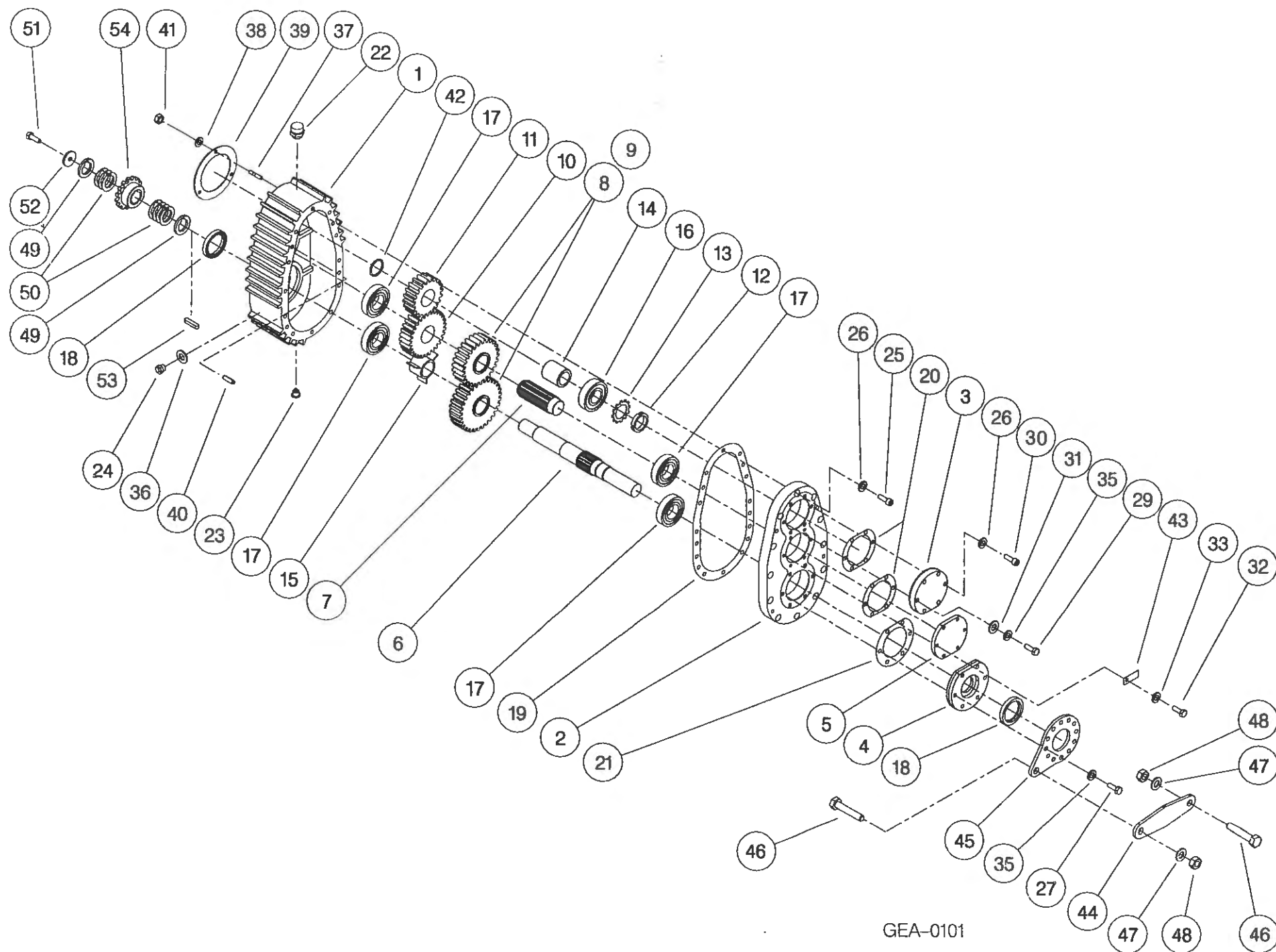
**Shelbourne Reynolds Engineering Limited**

ASSY NUMBER: GEA-0095				ASSY DESCRIPTION: BEVEL GEARBOX (1.5:1)			
ITEM	PART NO	DESCRIPTION	QTY	ITEM	PART NO	DESCRIPTION	QTY
1	191715 01	GEARBOX CASING	1				
2	191716 01	INPUT HOUSING	1				
3	191717 01	OUTSIDE END COVER	1				
4	191718 01	INSIDE END COVER	1				
5	191719 01	INPUT SHAFT (17T INVOLUTE)	1				
or	191819 01	INPUT SHAFT (28T INVOLUTE)	1				
6	191720 01	BEVEL GEAR 20T (17T INV)	1				
or	191798 01	BEVEL GEAR 20T (28T INV)	1				
7	191721 01	BEVEL GEAR 30T (26T INV)	1				
or	191799 01	BEVEL GEAR 30T (25T INV)	1				
8	191722 01	OUTPUT SHAFT (26T INVOLUTE)	1				
or	191800 01	OUTPUT SHAFT (25T INVOLUTE)	1				
9	BRG-7000	BEARING	1				
10	BRG-7020	BEARING	2				
11							
12	BRG-7040	BEARING	1				
13	SEA-0590	ROTARY SHAFT SEAL	1				
14	SEA-0600	ROTARY SHAFT SEAL	1				
15	191812	SHIM PACK (INPUT)	1				
16	191813	SHIM PACK (ENDS)	2				
17							
18	191735 01	SHAFT PLUG	1				
19	NUT-3010	LOCK RING	1				
20	WSH-6010	LOCK WASHER	1				
21							
22	WSH-1096	SHAKEPROOF WASHER	7				
23	HSS-1054	SET SCREW	23				
24							
25	SCW-0139	CAP HEAD SCREW	5				
26	WSH-0058	SPRING WASHER	5				
27	FIT-0254	BREATHER/DIP STICK	1				
28	FIT-0253	MAGNETIC DRAIN PLUG	1				
29							
30	FIT-0223	TAPER PLUG	1				
31	WSH-1145	SPRING WASHER	16				



**Shelbourne Reynolds Engineering Limited**

ASSY NUMBER: GEA-0101				ASSY DESCRIPTION: SHORT DROPBOX FOR RX & CX (1996)			
ITEM	PART NO	DESCRIPTION	QTY	ITEM	PART NO	DESCRIPTION	QTY
1	191723 01	GEARCASE	1	38	WSH-0012	PLAIN WASHER	3
2	191723 02	LID	1	39	191759 01	SEAL	1
3	191696 01	OUTPUT END CAP	1	40	191765 01	DOWL	2
4	191694 01	INPUT FLANGE	1	41	NUT-0263	NYLOC NUT	3
5	191693 01	END CAP	1	42	CIR-4000	SNAP RING CIRCLIP	1
6	191807 01	INPUT/AUGER OUTPUT SHAFT (28T INVOLUTE)	1	43	191928 01	IDENTIFICATION TAG	1
7	191801 01	INTERMED. SHAFT (28T INV)	1	44	193097 01	FIXED LINK	1
8	*	CHANGE GEAR (SEE DRIVE SUB)		45	191687 01	LINK BRACKET	1
9	*	CHANGE GEAR (SEE DRIVE SUB)		46	HSS-0316	SET SCREW	2
10	191803 01	SPUR GEAR 30T (28T INV)	1	47	WSH-0024	WASHER	2
11	191884 01	SPUR GEAR 20T (28T INV)	1	48	NUT-0271	NUT	2
12	NUT-3000	LOCK RING	1	49	191692 01	SPACER	2
13	WSH-6000	LOCK WASHER	1	50	191692 02	SHIM	7
14	191725 01	SPACER	1	51	HSSF10174	SET SCREW	1
15	191894 01	SPACER	1	52	190548 01	PLAIN WASHER	1
16	BRG-6600	BEARING	1	53	K1008045	KEY	1
17	BRG-5800	BEARING	4	54	*	AUGER SPROCKET (SEE DRIVE SUB)	
18	SEA-0610	ROTARY SHAFT SEAL	2				
19	191756 01	GASKET	1				
20	191757	SEAL PACK	2				
21	191758	SEAL PACK	1				
22	FIT-0255	BREATHER	1				
23	FIT-0253	MAGNETIC DRAIN PLUG1					
24	FIT-0251	LEVEL PLUG	1				
25	SCW-0196	CAP HEAD SCREW	12				
26	WSH-1301	SHAKEPROOF WASHER	15				
27	HSS-0202	SETSCREW	6				
28							
29	BLTA10290	BOLT	3				
30	SCW-0190	CAP HEAD SCREW	3				
31	WSH-0015	PLAIN WASHER	3				
32	HSS-0145	SET SCREW	6				
33	WSH-1300	SHAKEPROOF WASHER	6				
34							
35	WSH-0061	SPRING WASHER	9				
36	WSH-1010	DOWTY WASHER	1				
37	191737 01	STUD	3				



**Shelbourne Reynolds Engineering Limited**

ASSY NUMBER: GEA-0135      ASSY DESCRIPTION: 5 SPEED G.BOX ASSY ALUM/FINNED 1997 (WITH DROP BOX)

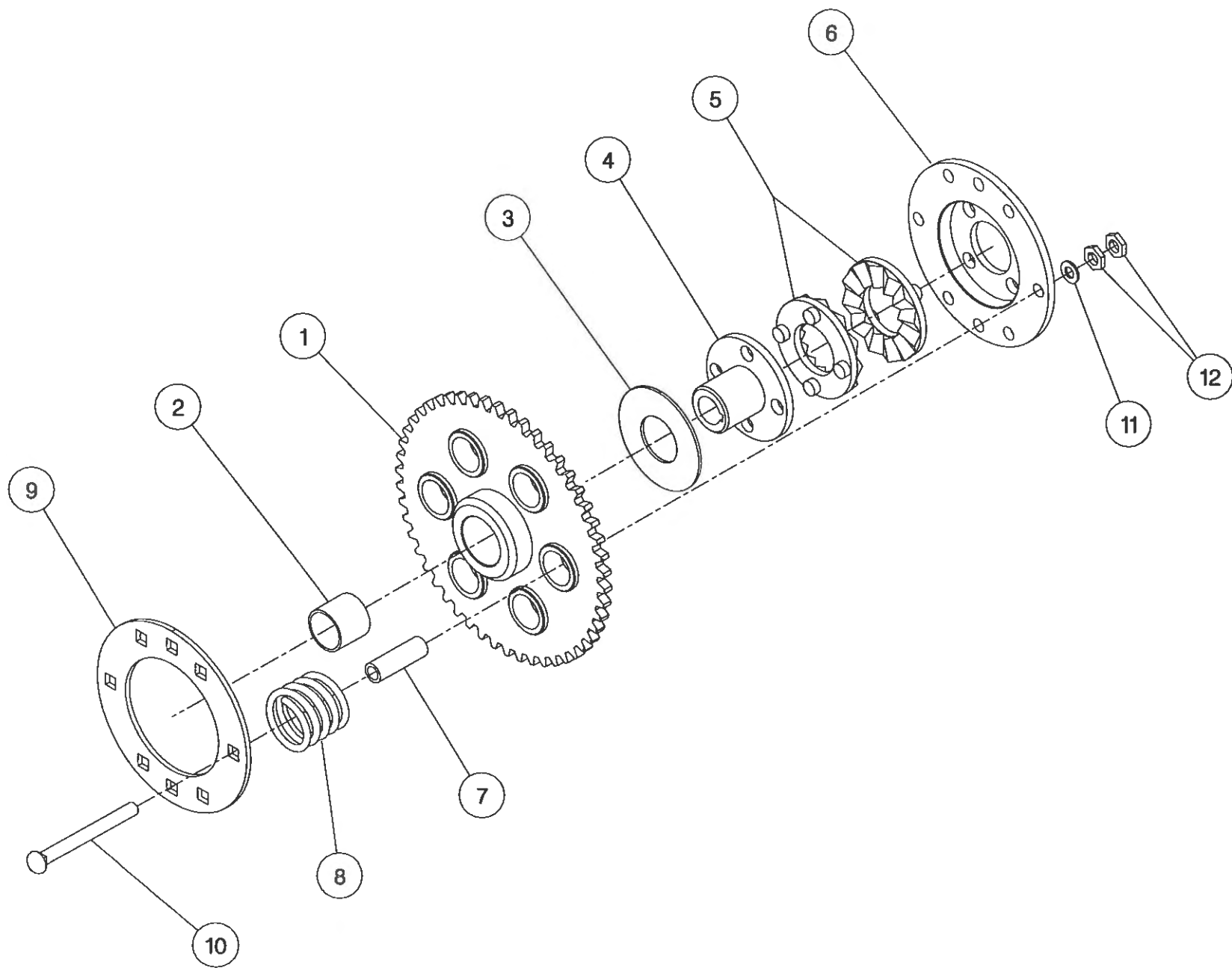
ITEM	PART NO	DESCRIPTION	QTY	ITEM	PART NO	DESCRIPTION	QTY
1	191821 01	GEARBOX CASING	1				
2	191829 01	INPUT SHAFT	1				
3	191825 01	SEAL HOUSING	1				
4	SEA-0550	ROTARY SHAFT SEAL	1				
5	BRG-6600	BEARING	1				
6	BRG-6601	BEARING	2				
7	CIR-3800	CIRCLIP	3				
8	CIR-2700	CIRCLIP	3				
9	191828 01	LAYSHAFT	1				
10	191823 01	BEVEL GEAR (15T)	1				
11	BRG-6800	BEARING	1				
12							
13	HSS-0194	SET SCREW	14				
14	WSH-0061	SPRING WASHER	14				
15	192924 01	REMOVABLE COVER	1				
16	ORA260000	'O' RING SEAL STRIP	0.7				
17	SCW-4760	WING SCREW	3				
18	WSH-1301	SHAKEPROOF WASHER	3				
19	FIT-0223	PLUG	1				
20	FIT-0218	BREATHER	1				
21							
22	191822 18	CHANGE GEAR (18T)	1				
23	191822 20	CHANGE GEAR (20T)	1				
24	191822 22	CHANGE GEAR (22T)	1				
25	191822 24	CHANGE GEAR (24T)	1				
26	191822 26	CHANGE GEAR (26T)	1				
27	191822 28	CHANGE GEAR (28T)	1				
28	191691 02	OUTPUT HOUSING (HOLES,1997)	1				
29	191885 01	OUTPUT SHAFT	1				
30	191824 01	BEVEL GEAR (18T)	1				
31	BRG-6000	BEARING	1				
32	BRG-5700	BEARING	1				
33	SEA-0565	ROTARY SHAFT SEAL	1				
34	191843 01	SLOTTED NUT	1				
35	PIN-1168	SPLIT PIN	1				
36	191830	GASKET SET	1				
37	191831	GASKET SET	1				





**Shelbourne Reynolds Engineering Limited**

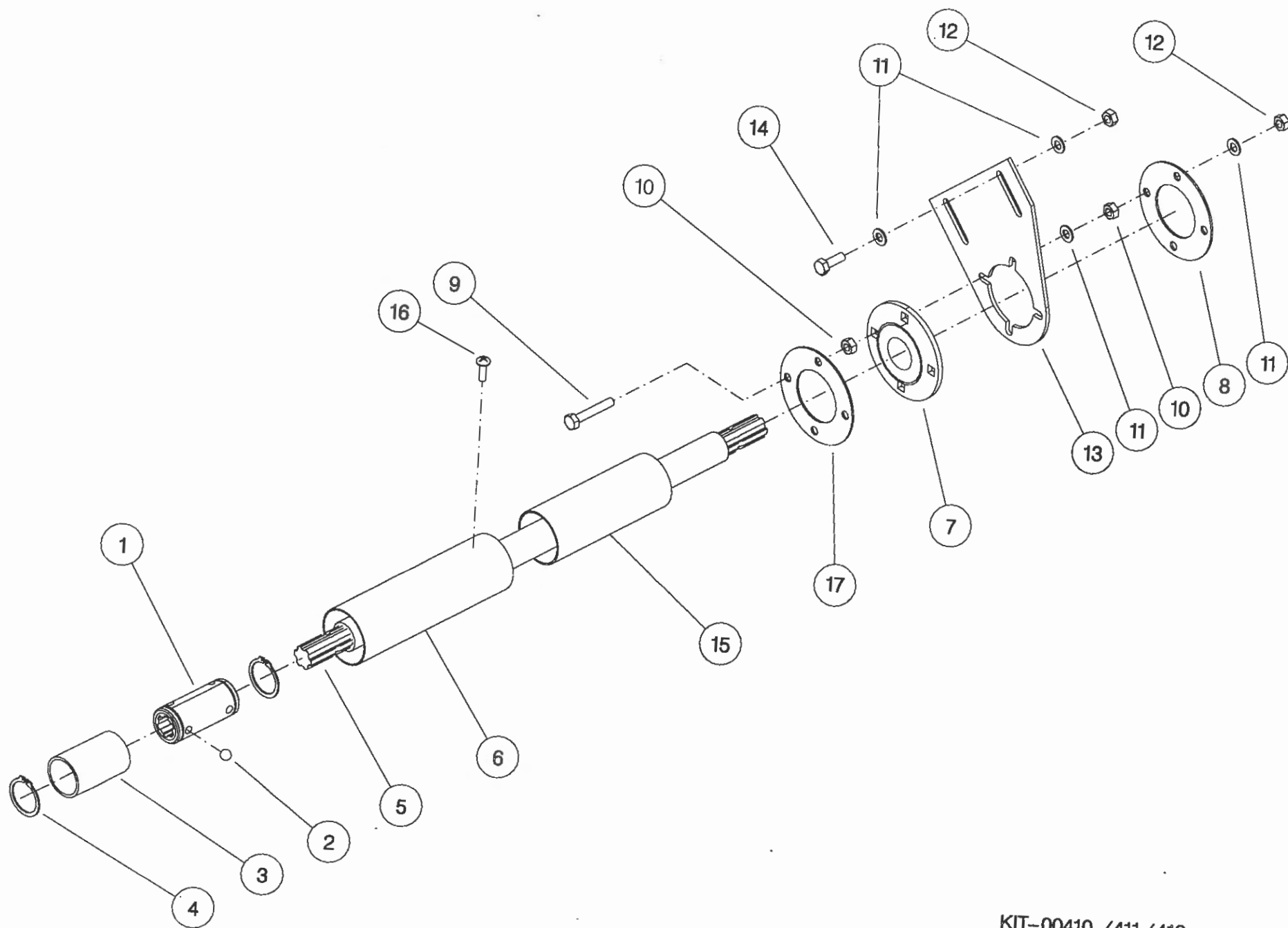
ASSY NUMBER: KIT-00109				ASSY DESCRIPTION:		AUGER DRIVE SPROCKET/CLUTCH ASSY	
ITEM	PART NO	DESCRIPTION	QTY	ITEM	PART NO	DESCRIPTION	QTY
1	192763 01	SPROCKET ASSY 50T	1				
2	BSH-3019	BUSH	1				
3	192008 01	THRUST WASHER	1				
4	192013 01	CLUTCH HUB	1				
5	131005	CLUTCH PLATE	2				
6	192014 01	DRIVE DISC	1				
7	131073 03	SPACER	6				
8	131063	SPRING	6				
9	192009 01	FIXING RING	1				
10	BLTF12563	COACH BOLT	6				
11	WSH-0018	PLAIN WASHER	6				
12	NUT-0370	HALF NUT	12				



KIT - 00109

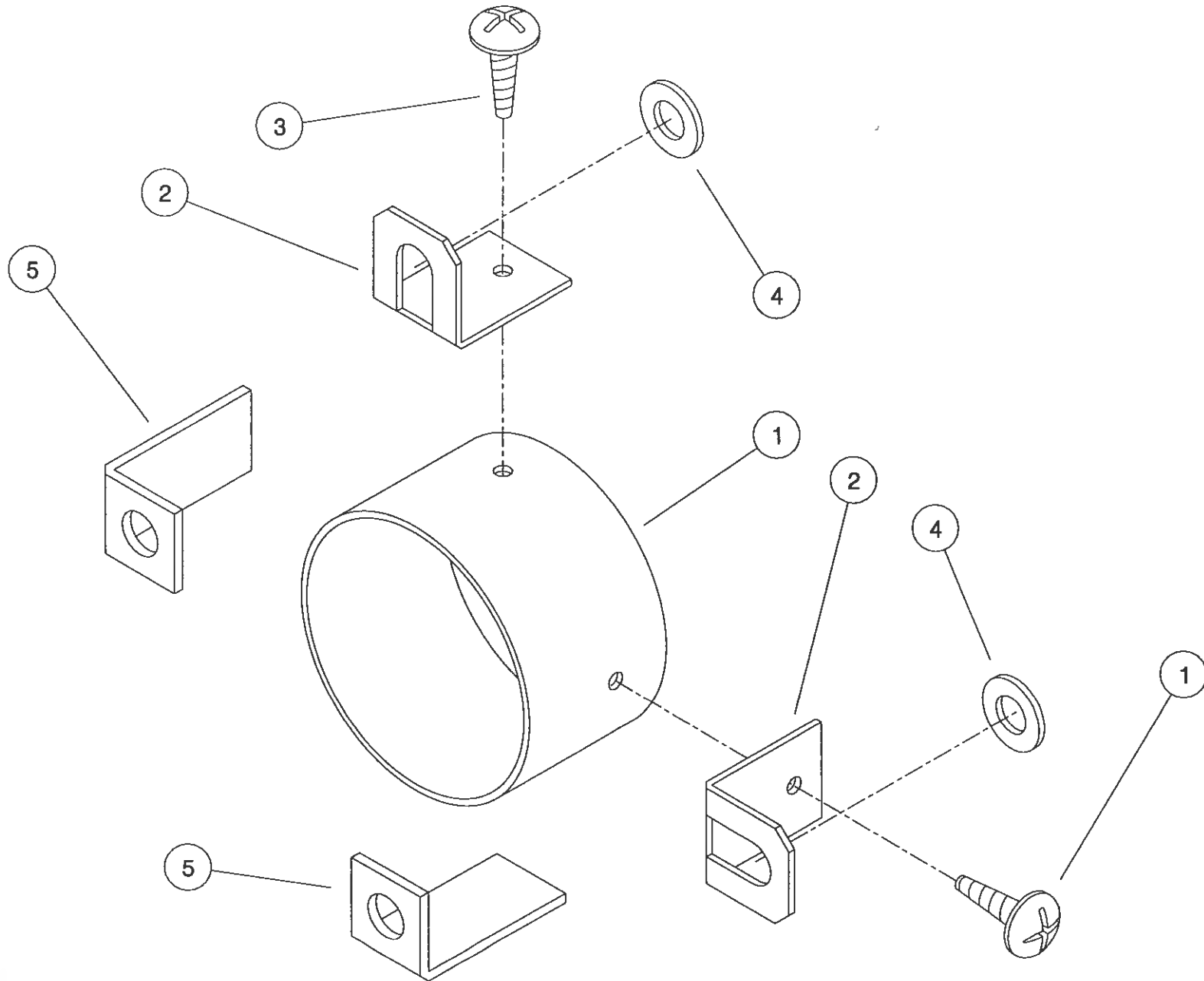
**Shelbourne Reynolds Engineering Limited**

ASSY NUMBER:		KIT-00412		ASSY DESCRIPTION: GEARBOX INPUT SHAFT SUB			
ITEM	PART NO	DESCRIPTION	QTY	ITEM	PART NO	DESCRIPTION	QTY
1	192979 01	COUPLING	1				
2	BRG-80120	RETAINING BALLS	6				
3	192980 01	RETAINING SLEEVE	1				
4	CIR-0055	CIRCLIP	2				
5	192982 03	INPUT SHAFT	1				
6	192985 07	INPUT SHAFT GUARD	1				
7	BRG-24500	BEARING	1				
8	192991 01	GUARD SUPPORT PLATE	1				
9	HSS-0275	SET SCREW	4				
10	NUT-0170	NUT	8				
11	WSH-0018	WASHER	12				
12	NUT-0269	NUT	6				
13	192993 01	SUPPORT PLATE	1				
14	HSS-0238	SETSCREW	2				
15	193557 01	INPUT SHAFT GUARD INNER	1				
16	SCW-5104	SELF TAP SCREW	1				
17	193556 01	GUARD SUPPORT PLATE	1				



## 44

ASSY NUMBER:		KIT-00525		ASSY DESCRIPTION: PTO END GUARD			
ITEM	PART NO	DESCRIPTION	QTY	ITEM	PART NO	DESCRIPTION	QTY
1	192985 06	GUARD TUBE	1				
2	192992 01	GUARD SECURING BRACKET	2				
3	SCW-5104	SCREW	2				
4	WSH-0015	WASHER	2				
5	191763 01	PTO BRACKET	2				



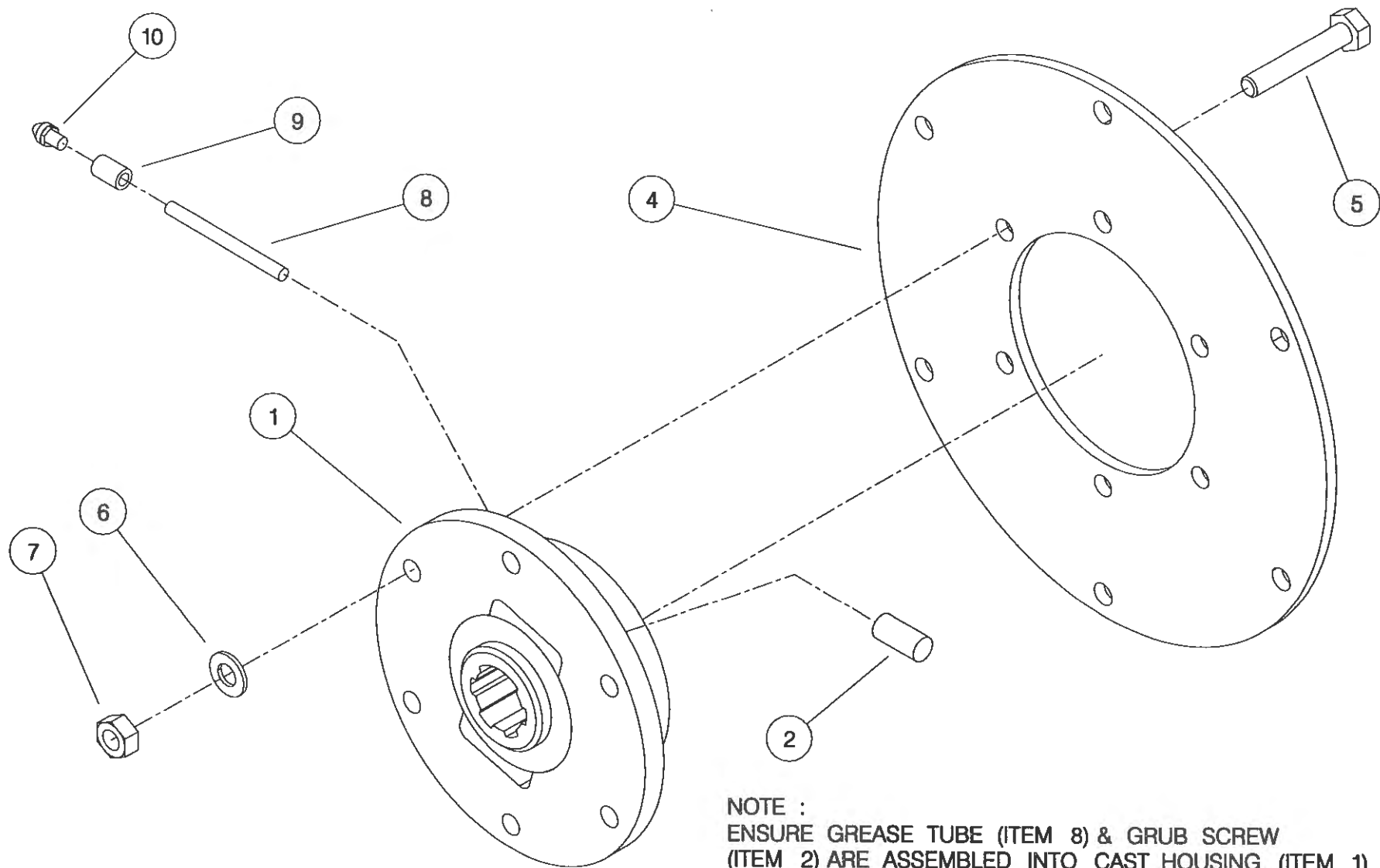
THIS KIT FIXES TO :  
R.X HEADERS - DIRECTLY ON TO DROP BOX ASSY.  
C.X HEADERS - ON TO REAR SHAFT SUPPORT BEARING PLATE.

KIT-00525

**Shelbourne Reynolds Engineering Limited**

ASSY NUMBER: KIT-00976				SUB ASSY DESCRIPTION: BALL JOINT COUPLING (CAST ROTOR)			
ITEM	PART NO	DESCRIPTION	QTY	ITEM	PART NO	DESCRIPTION	QTY
1	193114 01	SPLINED BALL	1				
2	SCW-4530	GRUB SCREW	1				
3							
4	193106 01	DRIVE RING PLATE	1				
5	HSS-0198	SETSCREW	6				
6	WSH-0015	WASHER	6				
7	NUT-0265	NUT	6				
8	193077 01	GREASE TUBE	1				
9	193078 01	GREASE TUBE ADAPTOR	1				
10	NIP-00600	GREASE NIPPLE	1				

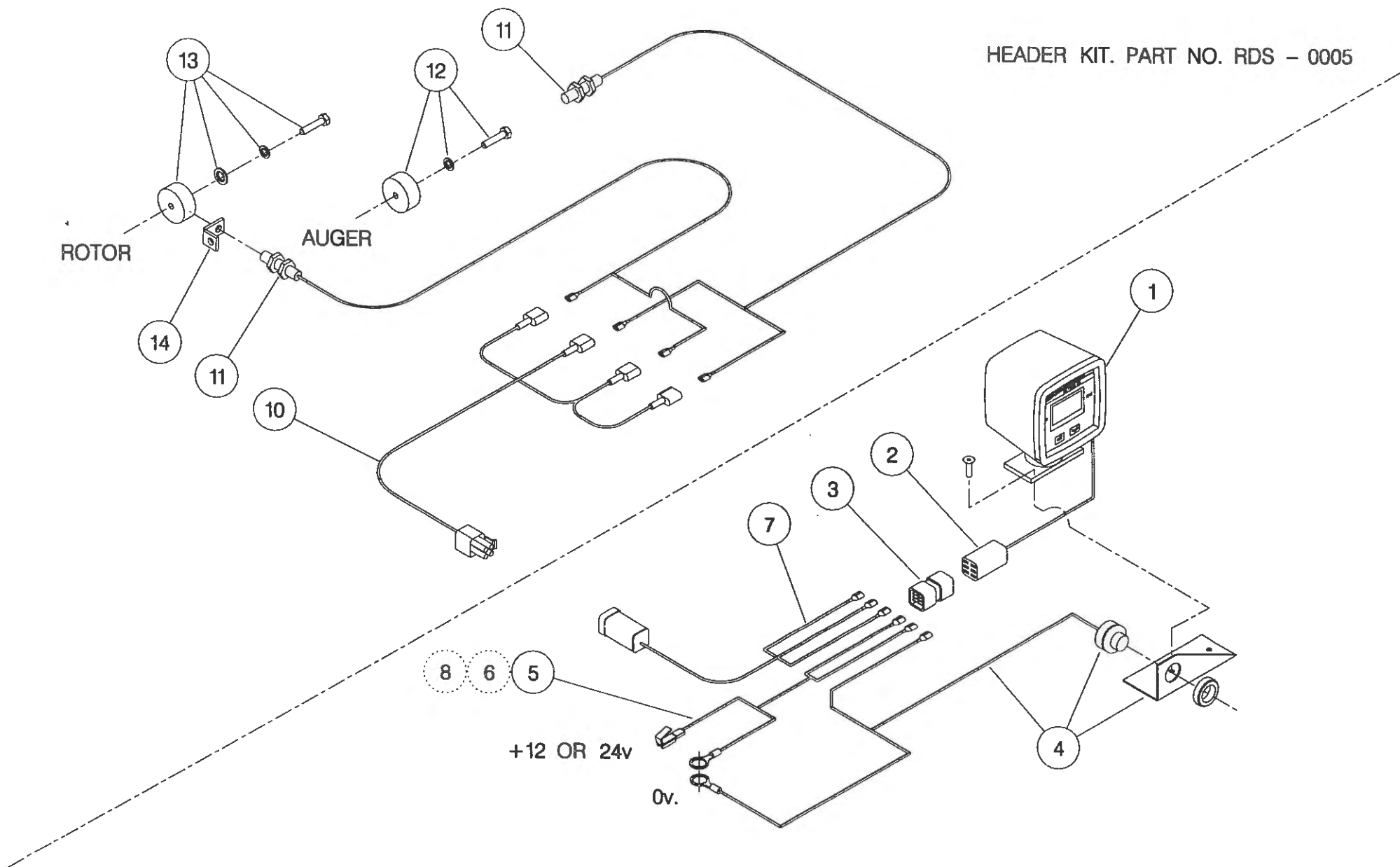




NOTE :  
ENSURE GREASE TUBE (ITEM 8) & GRUB SCREW  
(ITEM 2) ARE ASSEMBLED INTO CAST HOUSING (ITEM 1)  
THE ORIENTATION SHOWN IS FOR A R.H. ROTOR  
OPPOSITE ORIENTATION FOR L.H. ROTOR.

**Shelbourne Reynolds Engineering Limited**

ASSY NUMBER: RDS-0001/RDS-0005				ASSY DESCRIPTION: TACHO KIT			
ITEM	PART NO	DESCRIPTION	QTY	ITEM	PART NO	DESCRIPTION	QTY
1	RDS-0010	TACHO HEAD COMPLETE	1	13	RDS-0020	MAGNET CARRIER ,	1
2	RDS-0011	TACHO HEAD PLUG & ARMS	1			SET SCREW ,	1
3	RDS-0012	HARTING CONNECTOR &	1			PENNY WASHER &	1
		STICKER	1			SPRING WASHER	1
4	RDS-0013	AUDIBLE ALARM,	1	14	RDS-0021	ROTOR SENSOR BRACKET	1
		FIXING BRACKET &	1				
		SELF TAP.SCREWS	2				
5	RDS-0014	POWER CONNECTION LEAD	1				
6	FUS-0022	FUSE	1				
7	RDS-0015	COMBINE LEAD	1				
8	RDS-0016	24V-12V CONVERTER KIT (NOT INCLUDED IN RDS-0001)	1				
9							
10	RDS-0017	HEADER LEAD	1				
11	RDS-0018	SHAFT SENSOR	2				
12	RDS-0019	MAGNET ,	1				
		TAPTITE BOLT &	1				
		FIBRE WASHER	1				



HEADER KIT. PART NO. RDS - 0005

COMBINE KIT. PART NO. RDS - 0001

NOTE ;

ITEM 6 IS USED IF POWER SUPPLY IS NOT FUSED.

ITEM 8 IS USED IF POWER SUPPLY IS 24V, -VE EARTH. (NOT INCLUDED IN RDS - 0001).

ITEM 4 (ALARM ) IS BUILT INTO ITEM 1 (TACHO HEAD ) ON LATER MODELS.



# **NUMERIC PARTS LIST**

<b>PART No.</b>	<b>PAGE</b>	<b>PART No.</b>	<b>PAGE</b>	<b>PART No.</b>	<b>PAGE</b>
127075 12	28	191801 01	36	192494 01	20
127075 16	28	191803 01	36	192502 01	30
131005	40	191807 01	36	192533 01	8
131041 01	18	191812	34	192533 02	8
131063	40	191813	34	192537 01	8
131073 03	40	191819 01	34	192537 02	8
190060 06	18	191821 01	38	192543 01	20
190119 04	18	191822 18	38	192550 01	20
190119 05	4	191822 20	38	192555 01	28
190361 01	4	191822 22	38	192570 01	28
190548 01	36	191822 24	38	192636 01	14
190702 04	28	191822 26	38	192636 06	14
191040 01	18	191822 28	38	192679 01	11
191259 01	20	191823 01	38		12
191259 02	20	191824 01	38	192718 01	4
191339 01	20	191825 01	38		16
191340 01	20	191828 01	38	192735 10	4
191355 01	28	191829 01	38	192754 01	20
191359 01	28	191830	38	192754 02	20
191642 01	4	191831	38	192755 01	20
191652 01	18	191843 01	38	192763 01	40
191680 01	18	191862 01	8	192812 01	16
191687 01	36	191865 01	12	192813 01	16
191691 02	38	191865 02	11	192839 01	28
191692 01	36	191884 01	36	192876 01	30
191692 02	36	191885 01	38	192876 02	30
191693 01	36	191894 01	36	192890 04	11
191694 01	36	191928 01	36		12
191696 01	36	191981 01	4	192892 01	11
191715 01	34	191982 01	28		12
191716 01	34	191983 01	28	192892 02	11
191717 01	34	192008 01	40		12
191718 01	34	192009 01	40	192892 03	11
191723 01	36	192011 01	24		12
191723 02	36	192013 01	40	192897 01	12
191725 01	36	192014 01	40	192899 01	11
191735 01	34	192037 01	4	192924 01	38
191737 01	36	192038 01	4	192953 01	28
191756 01	36	192091 01	18	192954 01	20
191757	36	192193 01	20	192954 02	20
191758	36	192193 02	20	192959 01	11
191759 01	36	192227 01	24		12
191763 01	44	192227 02	24	192979 01	42
191765 01	36	192304 01	20	192980 01	42
191770 01	8	192363 01	24	192982 03	42
191774 01	18	192364 01	24	192985 06	44
191777 01	18	192368 01	24	192985 07	42
191798 01	34	192377 01	4	192991 01	42
191799 01	34	192442 01	20	192992 01	44
191800 01	34	192442 02	20	192993 01	42

# **NUMERIC PARTS LIST**

<b>PART No.</b>	<b>PAGE</b>	<b>PART No.</b>	<b>PAGE</b>	<b>PART No.</b>	<b>PAGE</b>
193009 01	28	193556 01	42	CIR-2700	38
193015 01	30	193557 01	42	CIR-3800	38
193016 01	28	193567 01	26	CIR-4000	36
193077 01	46	200035 03	14	CLP-01012	22
193078 01	46	200038 01	14	EDS-11400	28
193097 01	36	200120 03	14	EDS-11600	16
193103 01	12	610250 01	28	ETM-00440	26
193106 01	46	610257 01	28	ETM-00560	26
193114 01	46	AUG-02500	24	FIT-0213	22
193117 04	11	BLB-0075	26	FIT-0218	38
193118 01	11	BLT-2316	18	FIT-0223	34
	12	BLT-3745	14		38
193118 02	11	BLT-3790	14	FIT-0251	36
	12	BLT-4710	20	FIT-0253	34
193203 01	24	BLTA08350	28		36
193214 01	20	BLTA08470	28	FIT-0254	34
193219 01	20	BLTA10290	16	FIT-0255	36
193220 01	30		36	GEA-0095	18
193221 01	20	BLTA10410	16	GEA-0101	18
193222 01	20	BLTA10520	30	GEA-0135	18
193225 01	30	BLTA12290	18	GSTA14407	16
193232 01	20		30	HHBC40610	22
193233 01	20	BLTA12380	20	HHBC65610	22
193235 01	20	BLTF12563	40	HPPD07100	22
193244 01	20	BPG-00200	11	HSS-0084	20
193248 01	20	BRG-0240	14		28
193251 01	20		24	HSS-0086	22
193252 01	28	BRG-1995	18	HSS-0092	20
193253 01	16	BRG-2020	24	HSS-0140	4
193363 01	20	BRG-24500	42		20
193382 01	11	BRG-3275	30		28
	12	BRG-5700	38		30
193387 01	28	BRG-5800	36	HSS-0145	36
193388 01	28	BRG-6000	38	HSS-0155	8
193389 01	28	BRG-6600	36	HSS-0191	8
193390 01	28		38		24
193391 01	28	BRG-6601	38		34
193392 01	28	BRG-6800	38	HSS-0194	18
193393 01	28	BRG-7000	34		20
193395 01	28	BRG-7020	34		38
193438 01	20	BRG-7040	34	HSS-0198	46
193477 01	30	BRG-80120	42	HSS-0202	36
193478 01	28	BSH-1530	18	HSS-0235	30
193480 01	20	BSH-3030	16	HSS-0238	18
193480 02	20		20		20
193497 01	24	BSH-3070	20		42
193506 01	20	CFC-00500	26	HSS-0241	14
193515 01	26	CIR-0055	42		30
193523 01	32	CIR-0470	18	HSS-0260	20
193523 02	32	CIR-1150	20	HSS-0275	42

## NUMERIC PARTS LIST

<b>PART No.</b>	<b>PAGE</b>	<b>PART No.</b>	<b>PAGE</b>	<b>PART No.</b>	<b>PAGE</b>
HSS-0316	20	NUT-0580	14	WSH-0012	20
	36	NUT-3000	36		28
HSSF08174	11	NUT-3010	34		30
	12	NUTA07120	30	WSH-0015	8
HSSF10174	36	ORA260000	38		14
HSSF12204	24	PFS-00500	22		16
HSSG1020	11	PIN-01790	20		18
	12	PIN-1150	14		20
HSSG1217	18		20		24
K0807050	14	PIN-1168	38		30
K0807060	14	POP-0006	4		36
K1008045	36		20		44
KIT-00109	14		28		46
KIT-00412	18	POP-0007	20	WSH-0018	14
KIT-00525	18	PTO-09010	18		18
KIT-00976	11	SCBA08172	24		20
LMP-10501	26	SCCA10412	24		30
LTC-00040	28	SCW-0139	34		40
NIP-0001	16	SCW-0190	34		42
	20		36	WSH-0024	18
NIP-00600	46	SCW-0196	36		20
NUT-0164	28	SCW-0515	30		36
	30	SCW-1735	20	WSH-0030	14
NUT-0170	14	SCW-4530	46	WSH-0056	20
	42	SCW-4535	14		24
NUT-0260	20	SCW-4700	28		28
	22	SCW-4760	38	WSH-0058	4
	24	SCW-4960	20		8
	28		24		24
NUT-0263	20	SCW-5104	42		28
	24		44		34
	28	SCW-5180	11	WSH-0061	24
	30		12		34
	36		22		36
NUT-0265	8		26		38
	14	SEA-0550	38	WSH-0065	18
	16	SEA-0565	38		30
	18	SEA-0590	34	WSH-0070	20
	20	SEA-0600	34	WSH-1010	36
	24	SEA-0610	36	WSH-1034	11
	30	TPE-00250	26		12
	46		26	WSH-1038	28
NUT-0269	14	TPE-00251	26	WSH-1300	36
	18		26	WSH-1301	34
	20	WSH-0009	20		36
	30		22		38
	42		24	WSH-1547	20
NUT-0271	18		28	WSH-6000	36
	36	WSH-0012	24	WSH-6010	34
NUT-0370	40		36		

# **NUMERIC PARTS LIST**

<u>PART No.</u>	<u>PAGE</u>	<u>PART No.</u>	<u>PAGE</u>	<u>PART No.</u>	<u>PAGE</u>
HSS-0316 .....	20	NUT-0580 .....	14	WSH-0012 .....	20
.....	36	NUT-3000 .....	36	.....	28
HSSF08174 .....	11	NUT-3010 .....	34	.....	30
.....	12	NUTA07120 .....	30	WSH-0015 .....	8
HSSF10174 .....	36	ORA260000 .....	38	.....	14
HSSF12204 .....	24	PFS-00500 .....	22	.....	16
HSSG1020 .....	11	PIN-01790 .....	20	.....	18
.....	12	PIN-1150 .....	14	.....	20
HSSG1217 .....	18	.....	20	.....	24
K0807050 .....	14	PIN-1168 .....	38	.....	30
K0807060 .....	14	POP-0006 .....	4	.....	36
K1008045 .....	36	.....	20	.....	44
KIT-00109 .....	14	.....	28	.....	46
KIT-00412 .....	18	POP-0007 .....	20	WSH-0018 .....	14
KIT-00525 .....	18	PTO-09010 .....	18	.....	18
KIT-00976 .....	11	SCBA08172 .....	24	.....	20
LMP-10501 .....	26	SCCA10412 .....	24	.....	30
LTC-00040 .....	28	SCW-0139 .....	34	.....	40
NIP-0001 .....	16	SCW-0190 .....	34	.....	42
.....	20	.....	36	WSH-0024 .....	18
NIP-00600 .....	46	SCW-0196 .....	36	.....	20
NUT-0164 .....	28	SCW-0515 .....	30	.....	36
.....	30	SCW-1735 .....	20	WSH-0030 .....	14
NUT-0170 .....	14	SCW-4530 .....	46	WSH-0056 .....	20
.....	42	SCW-4535 .....	14	.....	24
NUT-0260 .....	20	SCW-4700 .....	28	.....	28
.....	22	SCW-4760 .....	38	WSH-0058 .....	4
.....	24	SCW-4960 .....	20	.....	8
.....	28	.....	24	.....	24
NUT-0263 .....	20	SCW-5104 .....	42	.....	28
.....	24	.....	44	.....	34
.....	28	SCW-5180 .....	11	WSH-0061 .....	24
.....	30	.....	12	.....	34
.....	36	.....	22	.....	36
NUT-0265 .....	8	.....	26	.....	38
.....	14	SEA-0550 .....	38	WSH-0065 .....	18
.....	16	SEA-0565 .....	38	.....	30
.....	18	SEA-0590 .....	34	WSH-0070 .....	20
.....	20	SEA-0600 .....	34	WSH-1010 .....	36
.....	24	SEA-0610 .....	36	WSH-1034 .....	11
.....	30	TPE-00250 .....	26	.....	12
.....	46	.....	26	WSH-1038 .....	28
NUT-0269 .....	14	TPE-00251 .....	26	WSH-1300 .....	36
.....	18	.....	26	WSH-1301 .....	34
.....	20	WSH-0009 .....	20	.....	36
.....	30	.....	22	.....	38
.....	42	.....	24	WSH-1547 .....	20
NUT-0271 .....	18	.....	28	WSH-6000 .....	36
.....	36	WSH-0012 .....	24	WSH-6010 .....	34
NUT-0370 .....	40	.....	36		