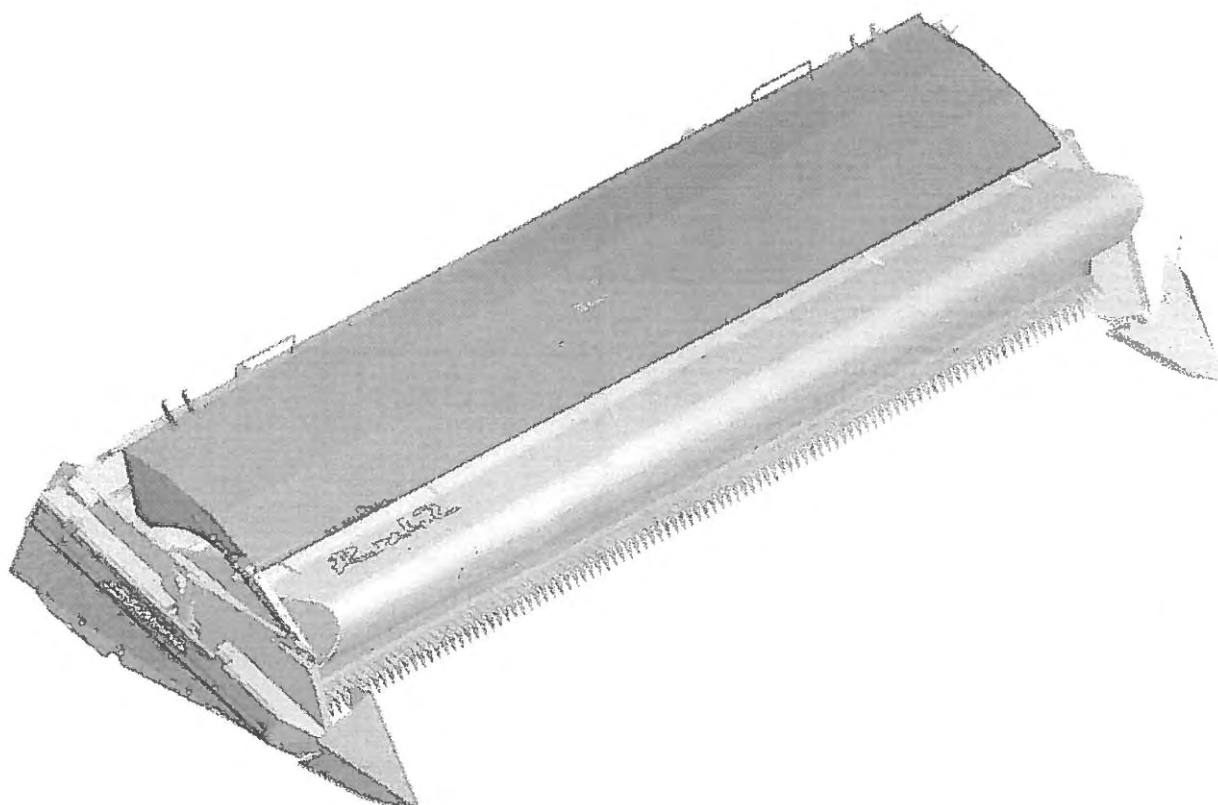


RX42 Shelbourne Header (1998)

PARTS MANUAL



Shelbourne Reynolds Engineering Ltd

Stanton

Bury St Edmunds

Suffolk IP31 2AR

England

Telephone: 01359 250415

(Stores direct 01359 251231)

Fax. No: 01359 250464

(Stores direct 01359 252031)

SHELBOURNE HEADER PARTS MANUAL

Your *Shelbourne* Header is designed to fit many different types of combine.

For this reason the machine number index is broken down into sections for identification. Your serial and machine numbers are listed below:

SHELBOURNE HEADER SERIAL NUMBER _____

SHELBOURNE HEADER MACHINE NUMBER _____

ADAPTOR PLATE ASSEMBLY _____

DRIVE KIT _____

HYDRAULIC FITTING KIT _____

OTHER KIT OPTIONS _____

This manual contains all parts common to the *Shelbourne* Header and is used in conjunction with the combine fittings manual, which contains the adaptor plate, and drive kit parts and fitting, and any other options available.

MACHINE IDENTIFICATION

The *Shelbourne* Header machine identification number is engraved on a plate on the top right hand corner of the header.

The adaptor plate has a plate on the top right hand corner also with the adaptor plate assembly number engraved on it.

The drive kit can be identified by description, and use of the drive kit identification number marked above.

ORDERING SPARE PARTS

To ensure that you order the correct part from your SRE dealer please use the following procedure.

ALWAYS QUOTE THE MACHINE AND SERIAL NUMBERS WHEN ORDERING.

Refer to the front of this parts list book (machine assemblies), decide if the part you want is on:

Shelbourne Head
Adaptor Kit
Drive Kit

If your part is on the Adaptor Kit, identify by matching the part number from the adaptor plate with that in the top left hand corner of the parts lists. You will find the appropriate drawing accompanying the parts list.

If the part you require is on the drive kit, ensure that you have the parts listing for the correct combine model and width. Then progress through to the next drawing following that list, for indication of that part.

If the part you require is on the *Shelbourne* Head assembly, identify the appropriate assembly by matching the part number from the *Shelbourne* Head with the page with the same number marked on the top left hand side.

Use the following sub assembly numbers and descriptions to find the area of the machine that your part is required, i.e. you need a part which is fitted to the auger, your part will be in the auger assembly parts list.

Having decided which sub-assembly your part should be under, use the number beside that sub-assembly description which will begin with 1960-- -- to find the parts listing of the sub-assembly further on in the manual. The number will be printed in the top left hand corner, the sub-assemblies are in numerical order.

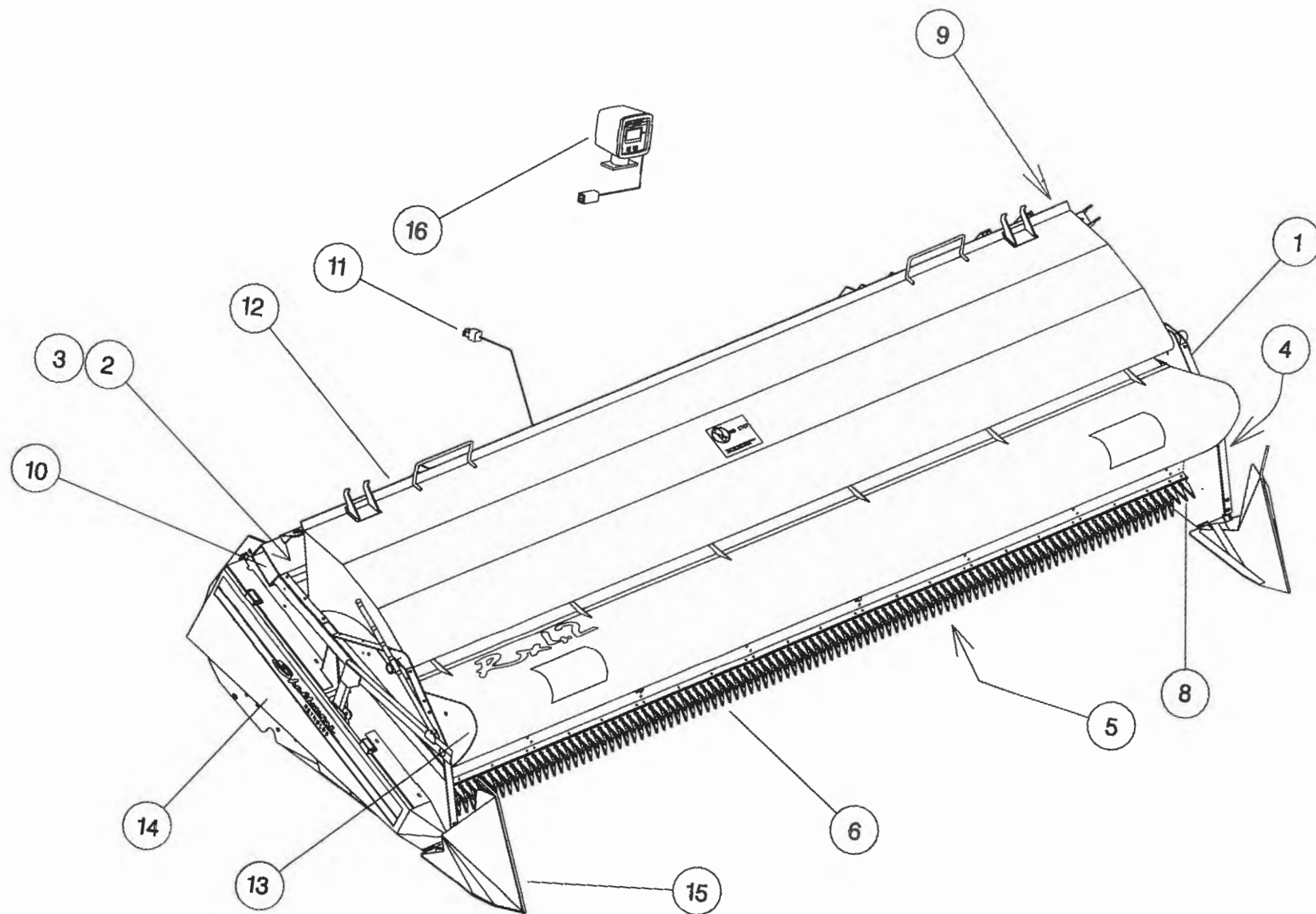
Having found the correct parts list, you will find the corresponding drawing by processing through the manual to the next drawing.

The drawings indicate the components by item numbers which you will find are repeated in the left hand side of your parts listing, and therefore referring to the correct part.

If the item within the sub-assembly is a further collection of parts (i.e. a KIT within a sub assembly) then the parts listing for this will be found just after the 1960-- -- sub-assemblies. These smaller assemblies will be in alphabetical and numerical order.

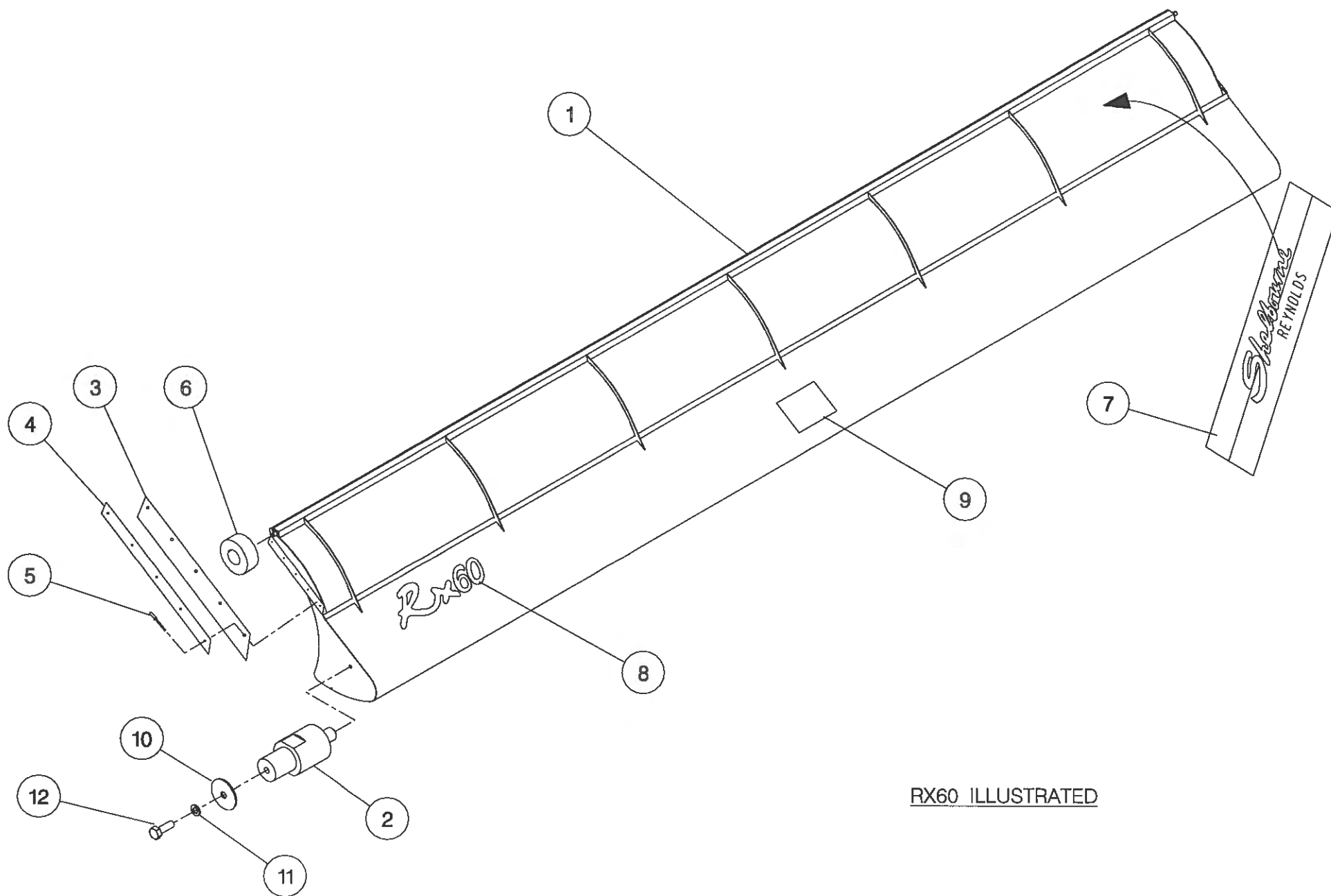
Shelbourne Reynolds Engineering Limited

ASSY NUMBER: 196544 07				ASSY DESCRIPTION: RX42 SHAKERPAN SHELBOURNE HEADER (1998)			
ITEM	PART NO	DESCRIPTION	QTY	ITEM	PART NO	DESCRIPTION	QTY
1	196150 07	FRAME & PARTS	1				
2	196125 07	AUGER ASSY	1				
3	196102 05	AUGER MTG SUB	1				
4	196067 02	DRIVE COMPONENTS	1				
5	196126 07	SHAKERPAN SUB	1				
6	196133 07	STRIPPING ROTOR ASSY	1				
7							
8	196149 01	ROTOR MTG SUB	1				
9	196134 01	ROTOR/AUGER DRIVE SUB	1				
10	196140 07	HYDRAULICS	1				
11	RDS-0005	HEADER MONITORING KIT	1				
12	196127 07	HOOD SUB ASSY	1				
13	196053 07	ADJ CROP DEFLECTOR SUB	1				
14	196145 03	EMBLEMS & GUARDS	1				
15	196132 01	SHORT DIVIDER SUB	1				
OR	196078 01	TORPEDO DIVIDER SUB	1				
16	RDS-0001	COMBINE MONITOR KIT	1				



Shelbourne Reynolds Engineering Limited

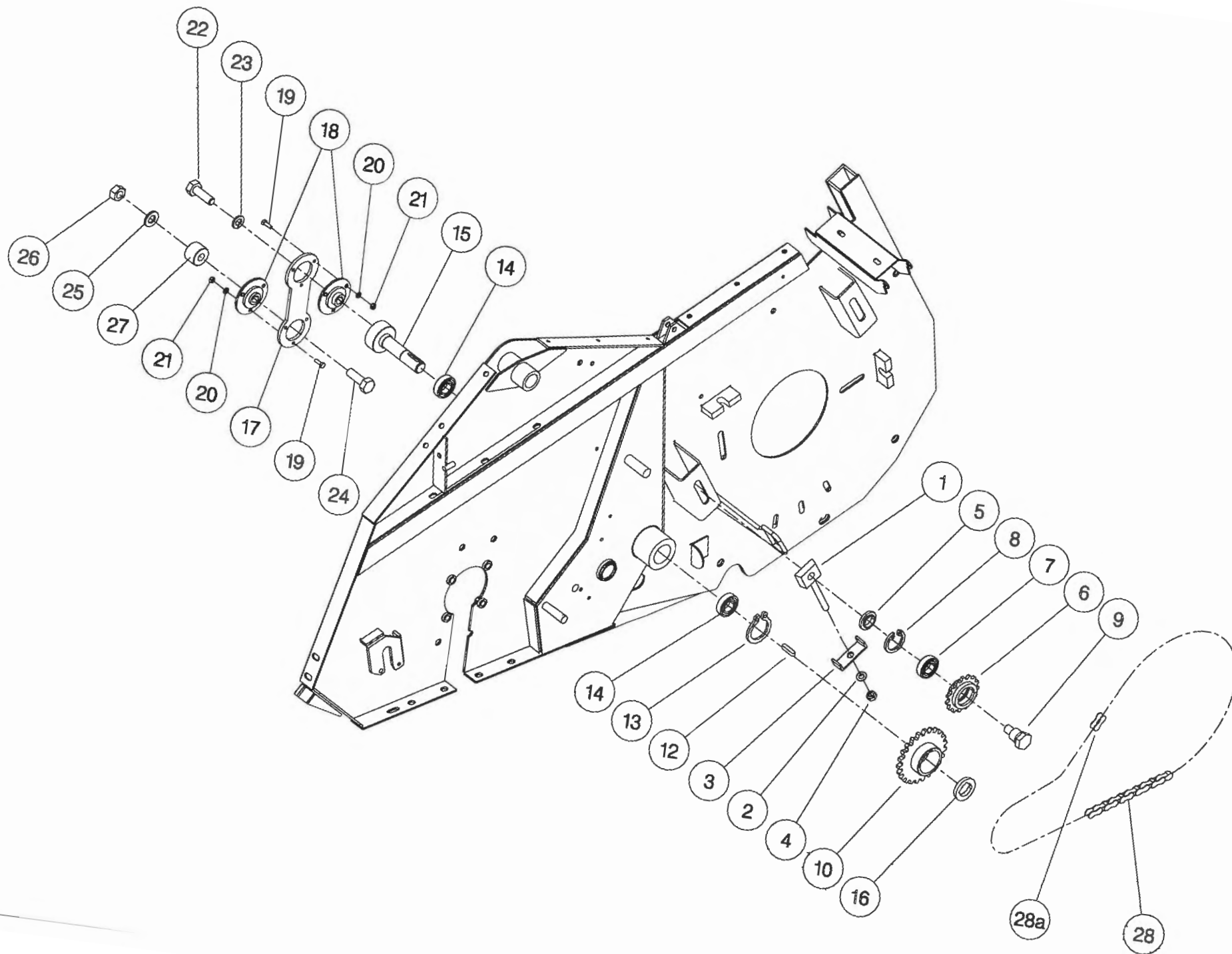
ASSY NUMBER: 196053 07				ASSY DESCRIPTION: ADJ.CROP DEFLECTOR SUB ASSY (RX42)			
ITEM	PART NO	DESCRIPTION	QTY	ITEM	PART NO	DESCRIPTION	QTY
1	193325 01	ADJ.CROP DEFLECTOR (4.2M)	1				
2	190361 01	PIVOT BUSH	2				
3	192037 01	RUBBER SEAL	2				
4	192038 01	CLAMP STRIP	2				
5	POP-0006	POP RIVET	10				
6	191642 01	ROLLER	2				
7	191981 01	EMBLEM (SHEL.REYNOLDS)	1				
8	192524 10	EMBLEM (RX42)	1				
9	192718 01	TRANSFER (NO STEP)	1				
10	190119 05	PLAIN WASHER	2				
11	WSH-0058	WASHER	2				
12	HSS-0140	SETSCREW	2				



PX60 ILLUSTRATED

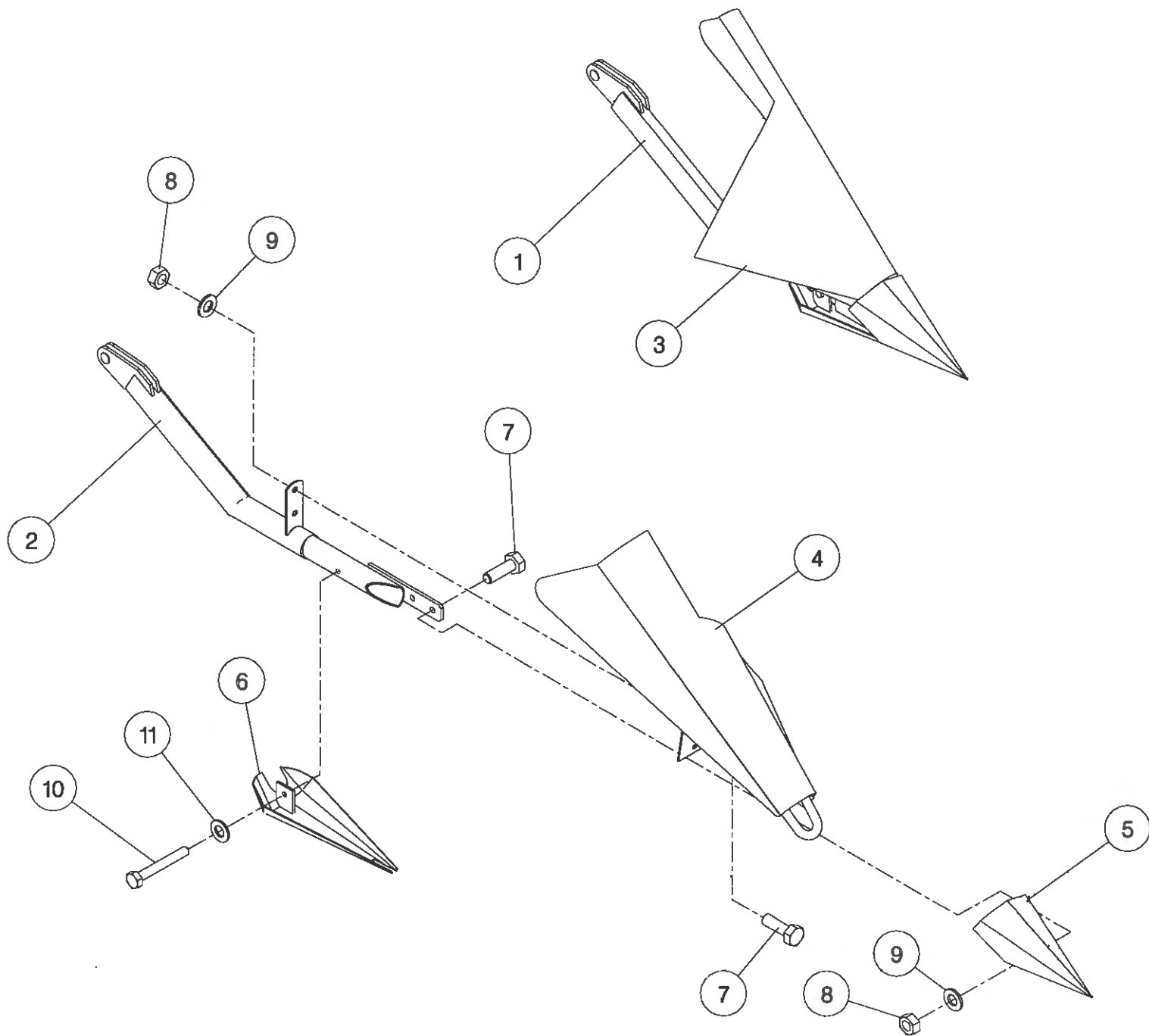
Shelbourne Reynolds Engineering Limited

ASSY NUMBER: 196067 02				ASSY DESCRIPTION:		DRIVE PARTS SHAKERPAN STD	
ITEM	PART NO	DESCRIPTION	QTY	ITEM	PART NO	DESCRIPTION	QTY
1	191777 01	IDLER ADJ SCREW	1				
2	WSH-0018	WASHER	1				
3	191774 01	PLATE	1				
4	NUT-0269	NUT	1				
5	191040 01	SPACER	1				
6	131014 01	SPROCKET IDLER	1				
7	BRG-1995	BEARING	1				
8	CIR-0470	CIRCLIP	1				
9	190060 06	IDLER SPINDLE	1				
10	192258 01	PAN DRIVE SPROCKET 25T	1				
11							
12	K0807035	KEY	1				
13	CIR-1125	CIRCLIP	1				
14	BRG-1994	BEARING	2				
15	192263 01	PAN DRIVE SHAFT	1				
16	BSHZ02553	LOCKING BUSH	1				
17	192265 01	PITMAN	1				
18	BRG-22500	BEARING	2				
19	HSS-0086	SETSCREW	6				
20	WSH-0009	FLAT WASHER	6				
21	NUT-0260	NUT	6				
22	HSS-0318	SETSCREW	1				
23	WSH-0070	SPRING WASHER	1				
24	BLT-2316	BOLT	1				
25	WSH-0024	FLAT WASHER	1				
26	NUT-0271	NUT	1				
27	192344 01	SPACER	1				
28	CHN-01682	CHAIN + JOINER	1				
28a	CHN-01600	CHAIN JOINER LINK	1				



Shelbourne Reynolds Engineering Limited

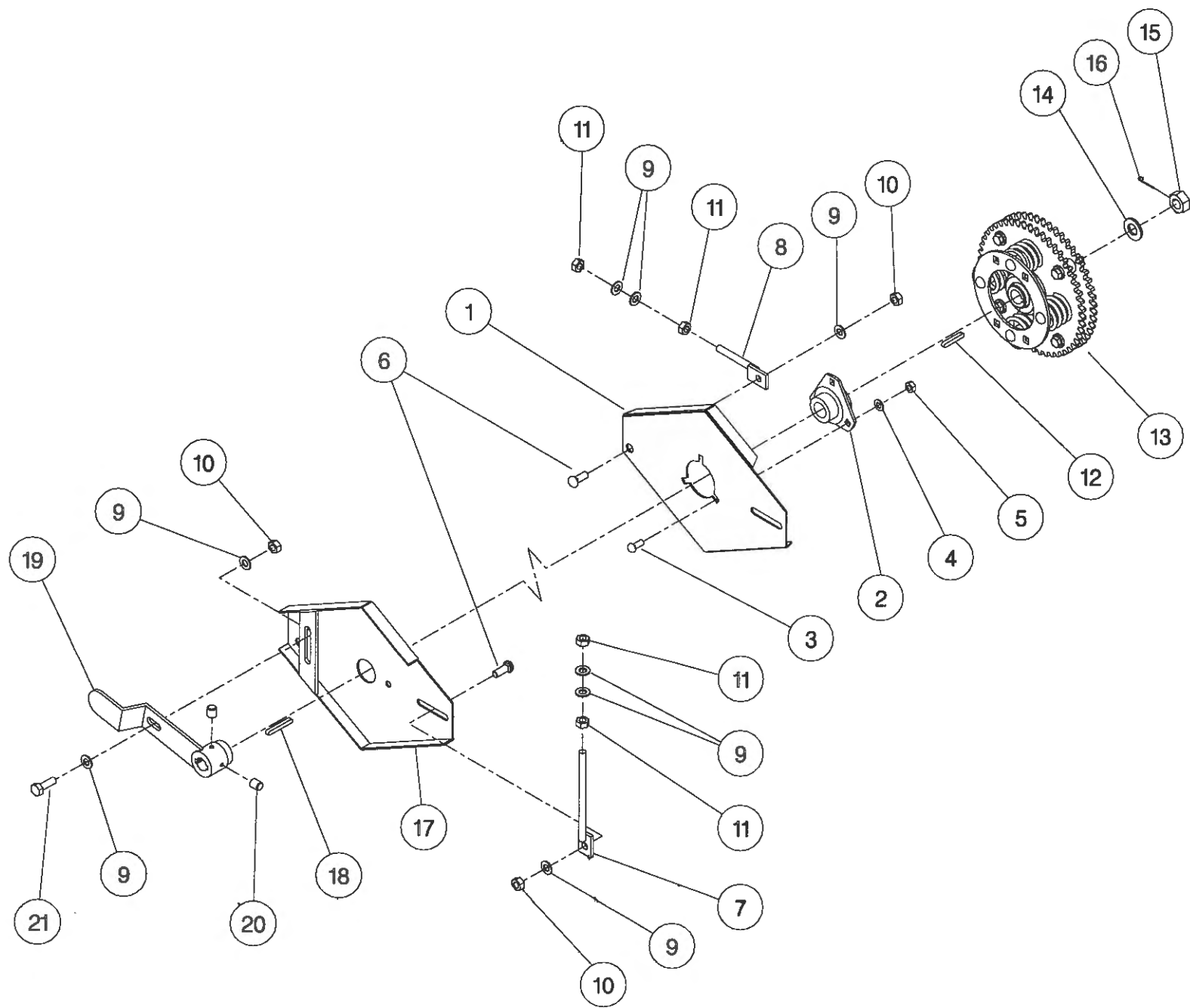
ASSY NUMBER: 196078 01				ASSY DESCRIPTION: TORPEDO DIVIDERS FOR RX & CX MACHINES			
ITEM	PART NO	DESCRIPTION	QTY	ITEM	PART NO	DESCRIPTION	QTY
1	192533 01	DIVIDER ARM LH	1				
2	192533 02	DIVIDER ARM RH	1				
3	192537 01	DIVIDING PLATE LH	1				
4	192537 02	DIVIDING PLATE RH	1				
5	191770 01	NOSE CONE	2				
6	191862 01	SHOE	2				
7	HSS-0191	SETSCREW	8				
8	NUT-0265	NUT	8				
9	WSH-0015	WASHER	8				
10	HSS-0155	BOLT	2				
11	WSH-0058	WASHER	2				



196078

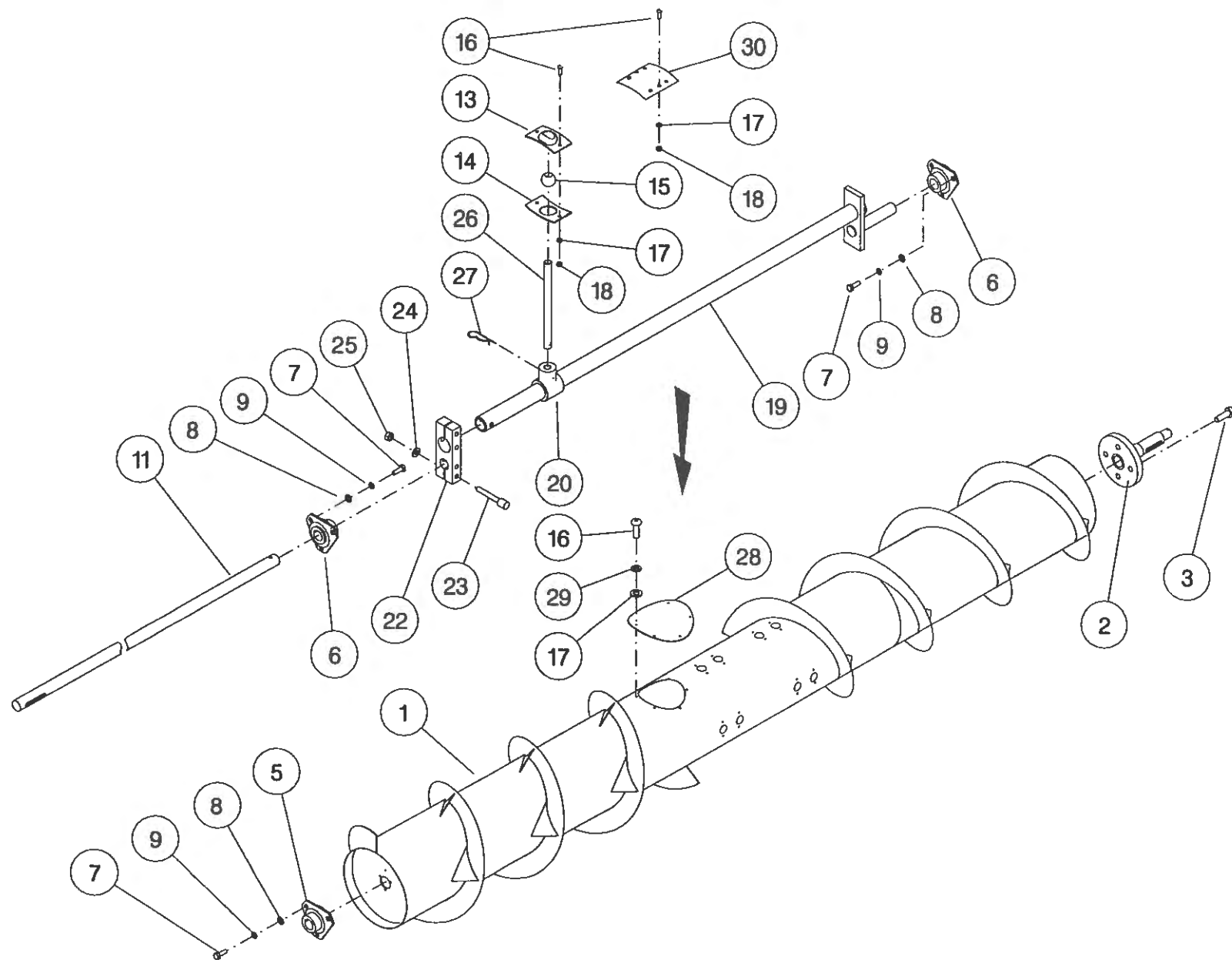
Shelbourne Reynolds Engineering Limited

ASSY NUMBER: 196102 05				ASSY DESCRIPTION: AUGER MOUNTING/DRIVE KIT (RX4.2) 1997			
ITEM	PART NO	DESCRIPTION	QTY	ITEM	PART NO	DESCRIPTION	QTY
1	200035 03	SUPPORT PLATE L.H.	1				
2	BRG-0240	BEARING	1				
3	BLT-3745	COACH BOLT	3				
4	WSH-0015	PLAIN WASHER	3				
5	NUT-0265	NYLOC NUT	3				
6	BLT-3790	COACH BOLT	4				
7	192636 06	VERTICAL ADJUSTER	2				
8	192636 01	HORIZONTAL ADJUSTER	2				
9	WSH-0018	PLAIN WASHER	14				
10	NUT-0269	NYLOC NUT	5				
11	NUT-0170	PLAIN NUT	8				
12	K0807050	KEY	1				
13	KIT-00116	AUGER SLIP CLUTCH (SEE PARTS LIST KIT-00116)	1				
14	WSH-0030	PLAIN WASHER	1				
15	NUT-0580	CASTLE NUT	1				
16	PIN-1150	SPLIT PIN	1				
17	200038 01	SUPPORT PLATE R.H.	1				
18	K0807060	KEY	1				
19	200120 02	ADJUSTER ASSY	1				
20	SCW-4535	GRUB SCREW	2				
21	HSS-0241	SET SCREW	1				



Shelbourne Reynolds Engineering Limited

ASSY NUMBER: 196125 07				ASSY DESCRIPTION: AUGER ASSY 4.2M (RET.FIN/LARGE DIA.)			
ITEM	PART NO	DESCRIPTION	QTY	ITEM	PART NO	DESCRIPTION	QTY
1	193320 01	AUGER W.ASSY.	1				
2	192011 01	AUGER DRIVE SHAFT	1				
3	HSSF12204	SET SCREW	4				
4							
5	BRG-0218	BEARING	1				
6	BRG-7080	BEARING	2				
7	HSS-0140	SET SCREW	9				
8	WSH-0012	PLAIN WASHER	9				
9	WSH-0058	SPRING WASHER	9				
10							
11	192223 04	AUGER SHAFT	1				
12							
13	AUG-01000	UPPER FINGER PL. (CONCAVE)	16				
14	AUG-01500	LOWER FINGER PL. (CONVEX)	16				
15	AUG-02000	FINGER GUIDE (BALL)	16				
16	SCW-4960	BUTT.HD.SKT.SCREW	44				
17	WSH-0009	PLAIN WASHER	44				
18	NUT-0260	NYLOC NUT	32				
19	192311 05	AUGER CRANK	1				
20	AUG-02500	FINGER HOLDER	16				
21							
22	192307 01	AUGER CLAMP	1				
23	SCCA10412	CAP HD SKT SCREW	4				
24	WSH-0015	PLAIN WASHER	4				
25	NUT-0265	NYLOC NUT	4				
26	192310 01	FINGER (16mm DIA.)	16				
27	AUG-03000	HAIRPIN COTTER	16				
28	193203 01	COVER PLATE	2				
29	WSH-0056	SPRING WASHER	12				
30	190735 01	BLANKING PLATE					

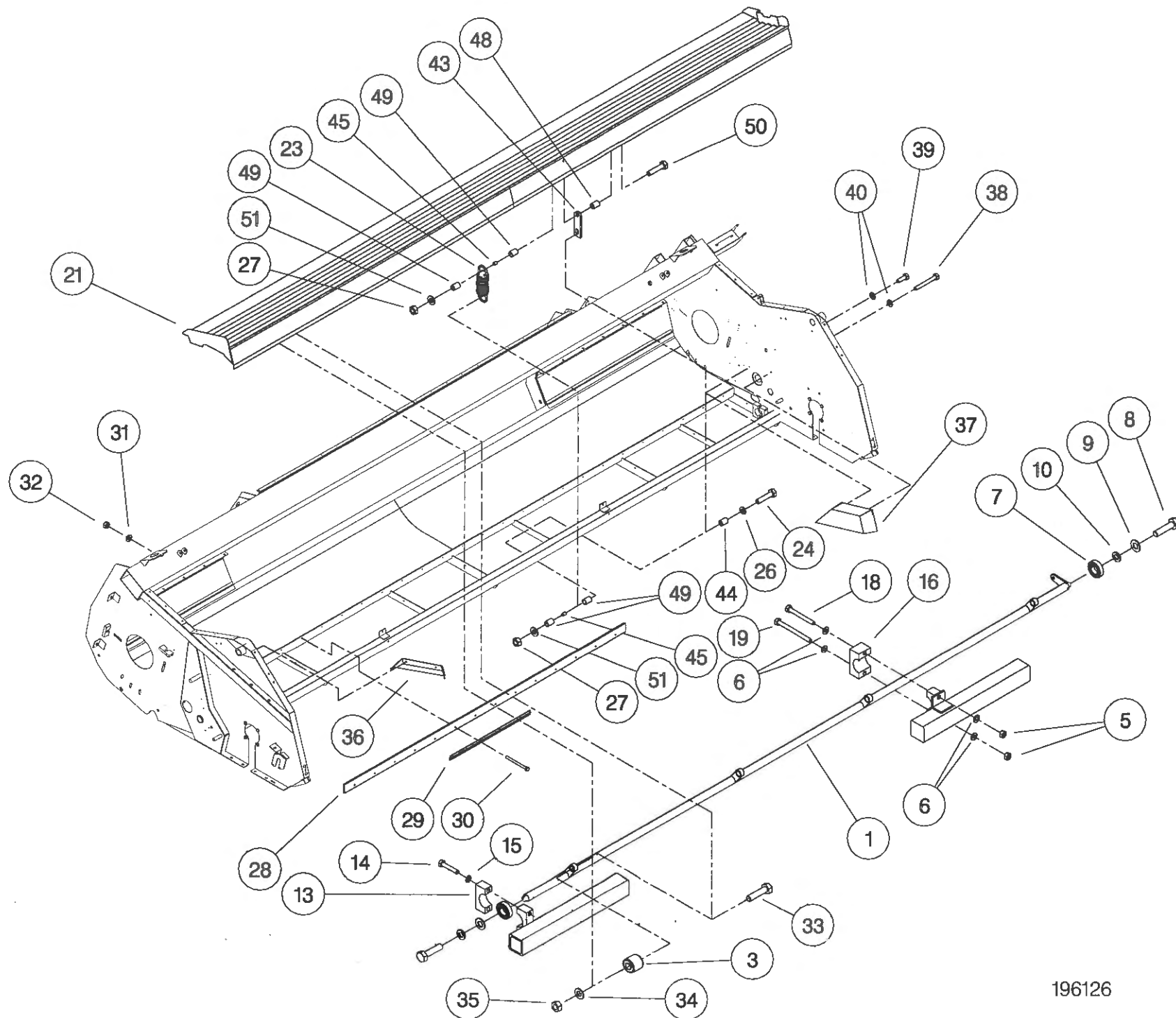


Shelbourne Reynolds Engineering Limited

ASSY NUMBER: 196126 07				ASSY DESCRIPTION: SHAKER PAN SUB RX42			
ITEM	PART NO	DESCRIPTION	QTY	ITEM	PART NO	DESCRIPTION	QTY
1	193321 01	TORSION TUBE (4.2M)	1				
2							
3	BSH-1530	RUBBER BUSH INSERT	4				
4							
5	NUT-0265	NYLOC NUT	4				
6	WSH-0015	FLAT WASHER	8				
7	BRG-1995	BEARING	2				
8	HSS-0315	SET SCREW	2				
9	WSH-0070	SPRING WASHER	2				
10	WSH-0024	PLAIN WASHER	2				
11							
12							
13	192264 02	CLAMP BLOCK TOP	2				
14	BLTA10350	BOLT	4				
15	WSH-0061	SPRING WASHER	4				
16	192266 01	PIVOT BLOCK (PAIR)	2				
17							
18	BLTA10530	BOLT	2				
19	HSSA10680	SETSCREW	2				
20							
21	193322 01	SHAKER PAN ASSY (4.2M)	1				
22							
23	SPGA32221	SPRING	4				
24	BLTA08500	BOLT	4				
25							
26	WSH-0012	WASHER	4				
27	NUT-0263	NUT	8				
28	193324 01	SEAL STRIP	2				
29	192273 01	CLAMP STRIP	7				
30	BLTA06470	BOLT	28				
31	WSH-0009	FLAT WASHER	28				
32	NUT-0260	NYLOC NUT	28				
33	HSS-0265	SET SCREW	4				
34	WSH-0018	PLAIN WASHER	4				
35	NUT-0269	NYLOC NUT	4				
36	192355 01	END DEFLECTOR R.H.	1				
37	192354 01	END DEFLECTOR L.H.	1				

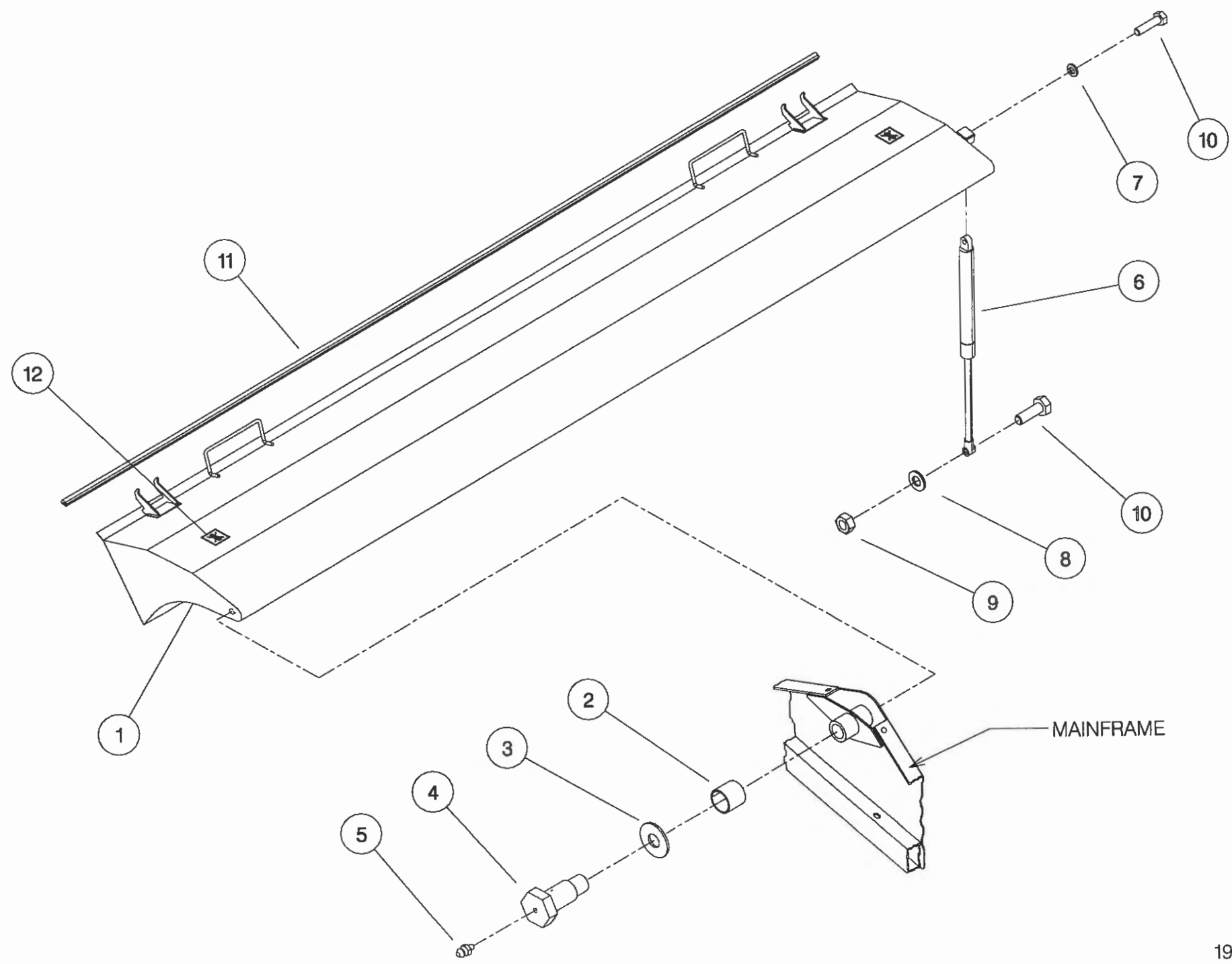
Shelbourne Reynolds Engineering Limited

ASSY NUMBER: 196126 07 CONTINUED				ASSY DESCRIPTION: SHAKER PAN SUB RX42			
ITEM	PART NO	DESCRIPTION	QTY	ITEM	PART NO	DESCRIPTION	QTY
38	BLTA06320	BOLT	2				
39	HSS-0084	SET SCREW	2				
40	WSH-0056	SPRING WASHER	4				
41							
42							
43	192969 01	RETAINER	4				
44	192970 01	TUBE	4				
45	PSP-01201	PLASTIC SPACER	8				
46							
47							
48	192970 02	TUBE	4				
49	PSP-01800	PLASTIC SPACER	16				
50	BLTA08530	BOLT	4				
51	WSH-1038	PENNY WASHER	8				



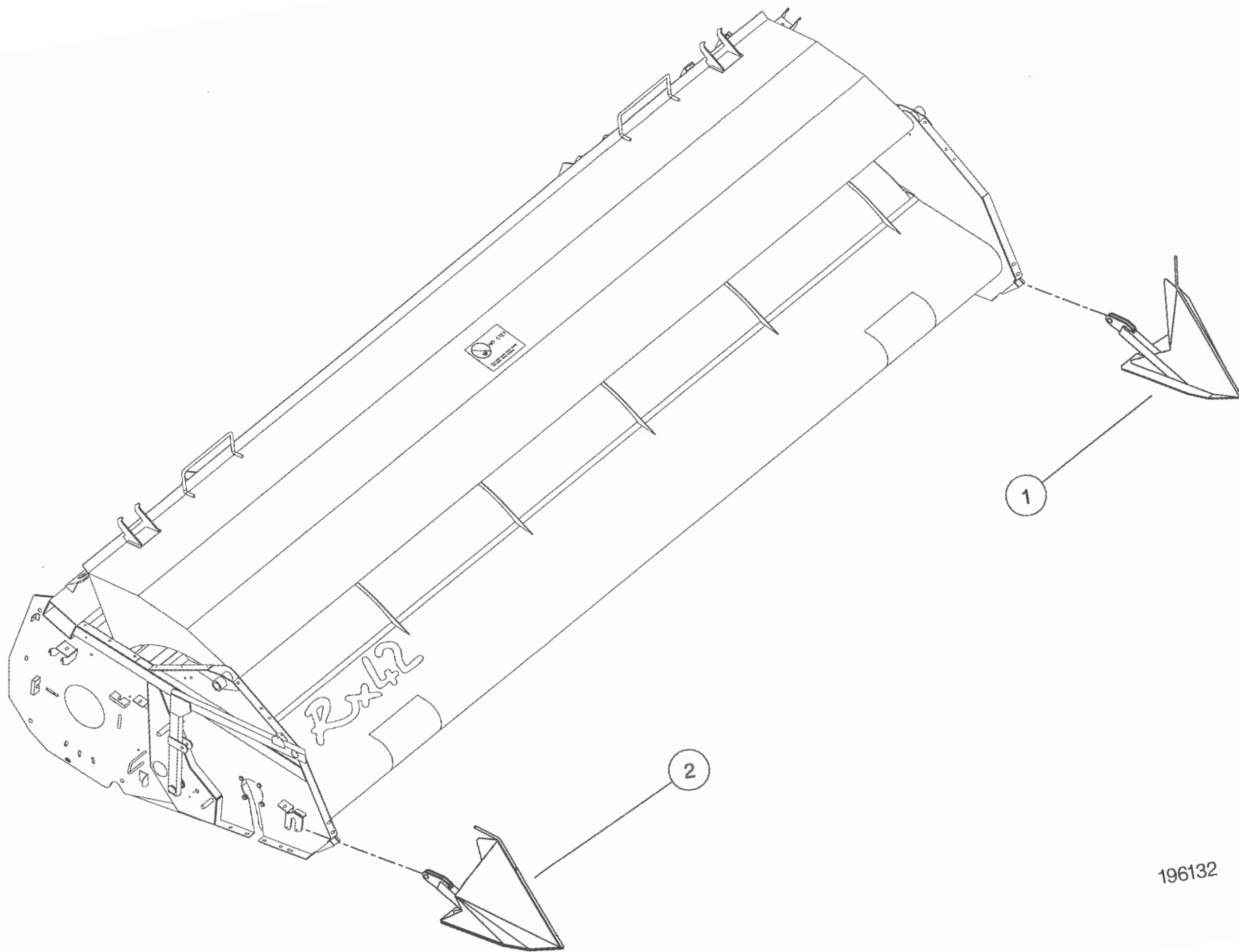
Shelbourne Reynolds Engineering Limited

ASSY NUMBER: 196127 07				ASSY DESCRIPTION: TOP DOOR COWL ASSY (RX42)			
ITEM	PART NO	DESCRIPTION	QTY	ITEM	PART NO	DESCRIPTION	QTY
1	193323 01	COWL ASSY (RX42)	1				
2	BSH-3030	BUSH	2				
3	192813 01	LARGE WASHER	2				
4	192812 01	COWL PIN	2				
5	NIP-0001	GREASE ZERK	2				
6	GSTA14407	GAS STRUTT	1				
7	WSH-0061	WASHER	1				
8	WSH-0015	WASHER	1				
9	NUT-0265	NUT	1				
10	BLTA10290	BOLT	2				
11	EDS-11600	SEAL STRIP	4.2m				
12	192718 01	TRANSFER (NO STEP)	2				



22

ASSY NUMBER: 196132 01				ASSY DESCRIPTION: SHORT DIVIDERS SUB (RX & CX)			
ITEM	PART NO	DESCRIPTION	QTY	ITEM	PART NO	DESCRIPTION	QTY
1	193348 01	SHORT DIVIDER LH	1				
2	193348 02	SHORT DIVIDER RH	1				

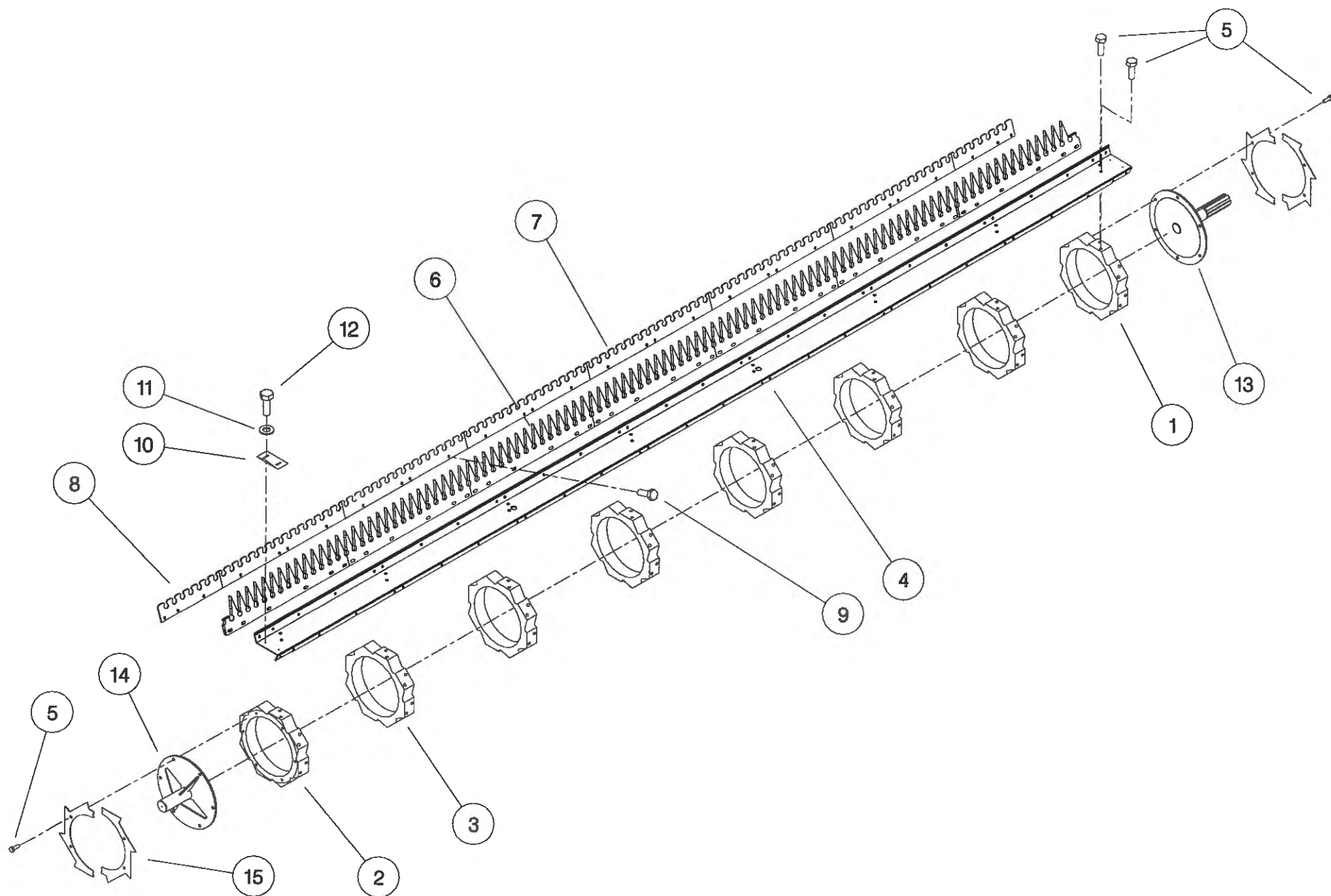


196132

Shelbourne Reynolds Engineering Limited

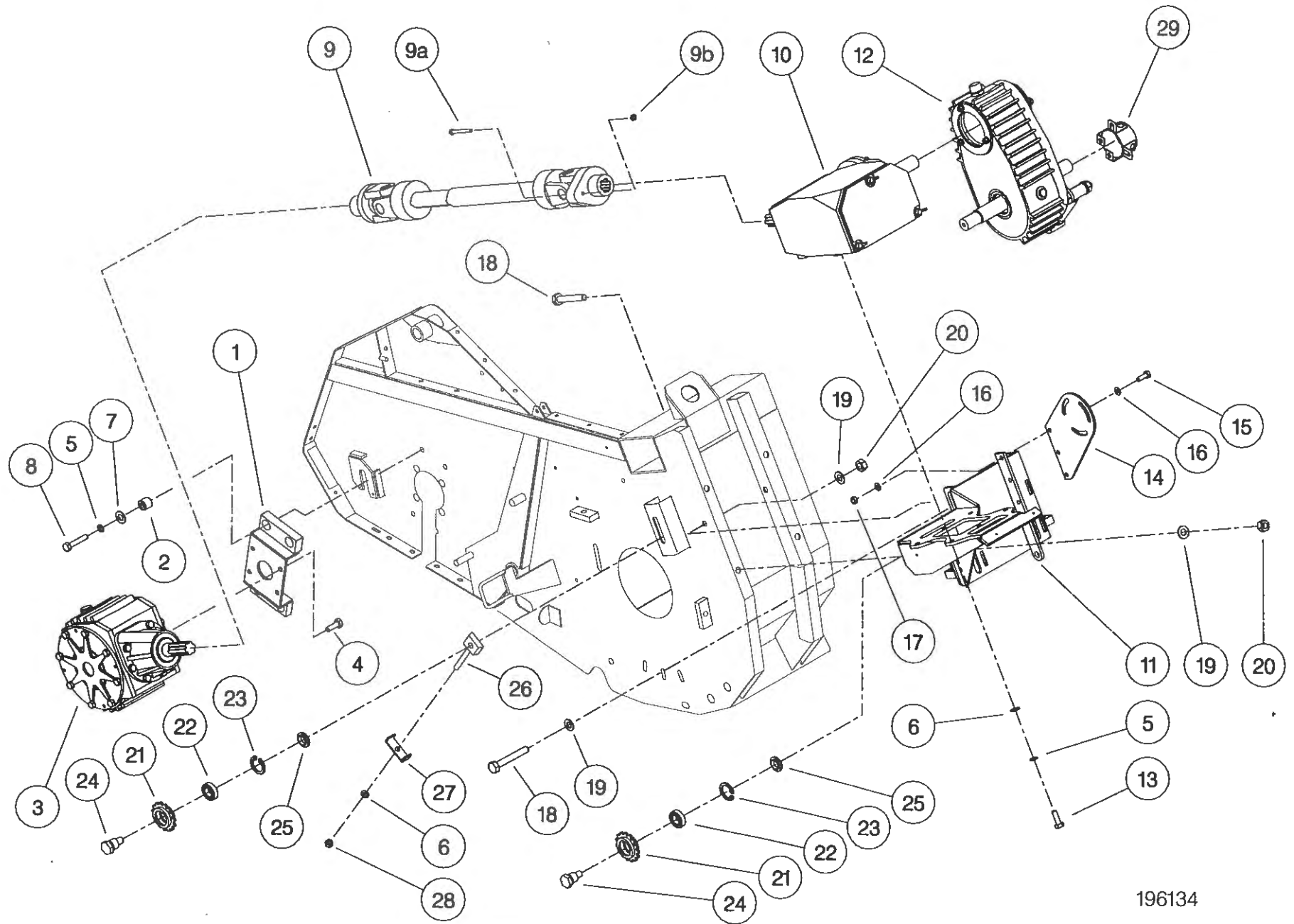
ASSY NUMBER: 196133 07 ASSY DESCRIPTION:STRIPPING ROTOR ASSY 4.2m

ITEM	PART NO	DESCRIPTION	QTY	ITEM	PART NO	DESCRIPTION	QTY
1	192892 01	OUTER HUB CASTING L.H.	1				
2	192892 02	OUTER HUB CASTING R.H.	1				
3	192892 03	INNER HUB CASTING	6				
4	192890 04	ROTOR SECTION 4.2M	8				
5	HSSG10204	SET SCREW	140				
6	191968 02	ELITE ELEMENT	56				
OR	193087 01	ELITE ELEMENT(SLOTTED)	56				
7	192291 01	ANTI WEAR STRIP CTR.	48				
OR	192291 07	S-TYPE STRIP CTR	48				
8	192291 02	ANTI WEAR STRIP END	16				
OR	192291 08	S-TYPE STRIP END	16				
9	HSSF08174	SET SCREW	240				
10	192679 01	ANTI WRAP PLATE	16				
11	WSH-1034	PENNY WASHER	32				
12	SCW-5180	SELF TAP.SCREW	32				
13	192897 01	DRIVE SHAFT W/ASSY	1				
14	192899 01	IDLE SHAFT W/ASSY	1				
15	192959 01	OUTER CLAMP RING (HALF)	4				



Shelbourne Reynolds Engineering Limited

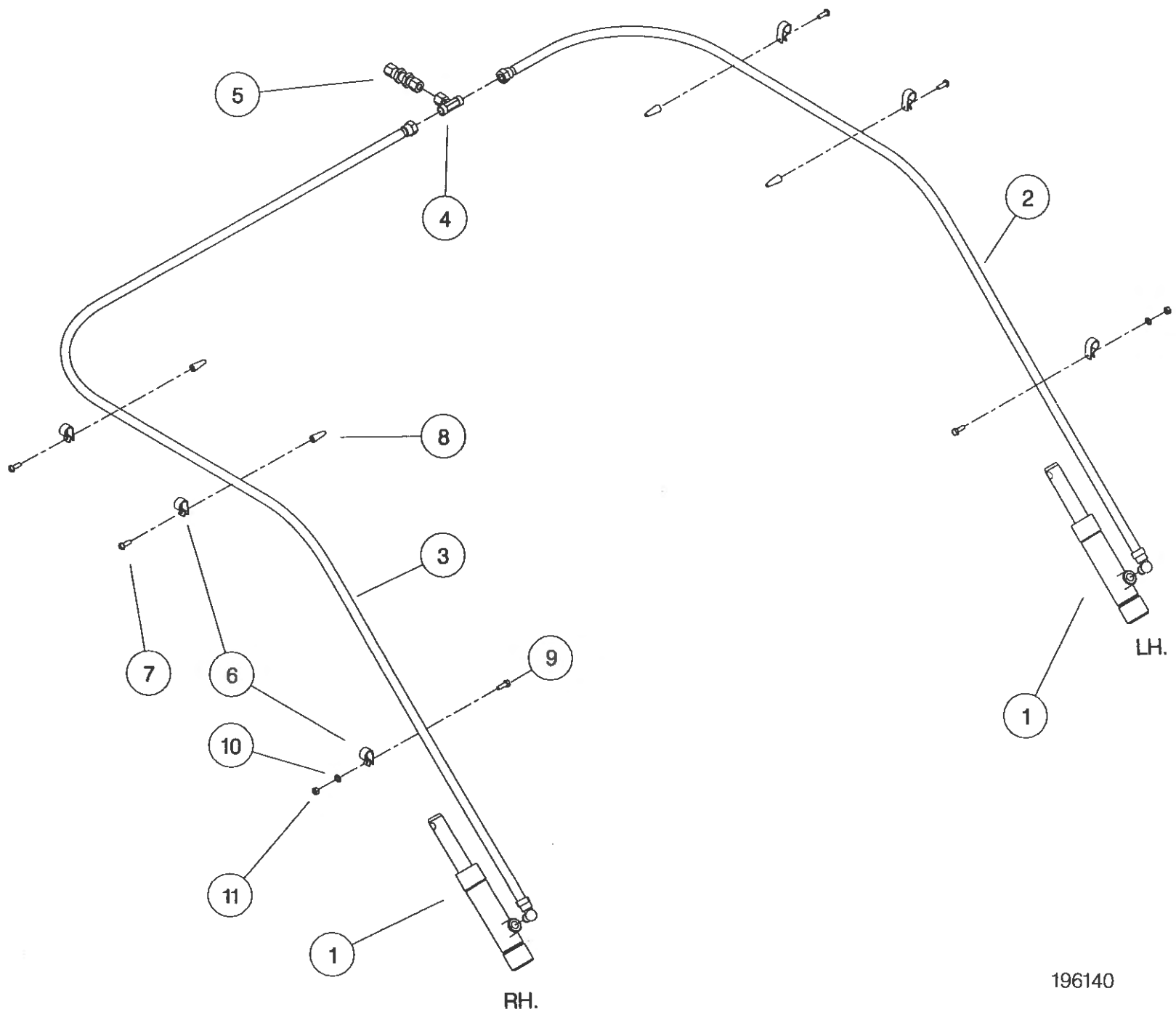
ASSY NUMBER: 196134 01				ASSY DESCRIPTION: ROTOR/AUGER DRIVE 1997 (4.2M)			
ITEM	PART NO	DESCRIPTION	QTY	ITEM	PART NO	DESCRIPTION	QTY
1	191652 01	GEARBOX BRACKET	1				
2	BSH-1530	BUSH	4				
3	GEA-0095	BEVEL GEARBOX (SEE PARTS LIST GEA-0095)	1				
4	HSSG12174	SET SCREW	4				
5	WSH-0065	SPRING WASHER	10				
6	WSH-0018	PLAIN WASHER	7				
7	190119 04	PLAIN WASHER	4				
8	BLTA12290	BOLT	4				
9	PTO-09011	POWER SHAFT	1				
9a	BLTA07320	SHEAR BOLT					
9b	NUT-0162	NUT					
10	GEA-0135	FIVE SPEED GEARBOX ASSY (SEE PARTS LIST GEA-0135)	1				
11	192091 01	GEARBOX BRACKET (ALUM./FINS)	1				
12	GEA-0101	DROPBOX ASSY (SEE PARTS LIST GEA-0101)	1				
13	HSS-0238	SET SCREW	6				
14	191680 01	DROP BOX SUPPORT PLATE	1				
15	HSS-0194	SET SCREW	3				
16	WSH-0015	PLAIN WASHER	6				
17	NUT-0265	NYLOC NUT	3				
18	HSS-0330	SETSCREW	4				
19	WSH-0024	PLAIN WASHER	6				
20	NUT-0271	NYLOC NUT	4				
21	131014 01	SPROCKET IDLER	2				
22	BRG-1995	BEARING	2				
23	CIR-0470	CIRCLIP	2				
24	190060 06	IDLER SPINDLE	2				
25	191040 01	IDLER SPACER	2				
26	191777 01	IDLER ADJ SCREW	1				
27	191774 01	PLATE	1				
28	NUT-0269	NUT	1				
29	KIT-00525	PTO GUARD KIT	1				



196134

Shelbourne Reynolds Engineering Limited

ASSY NUMBER: 196140 07				ASSY DESCRIPTION: HYDRAULIC CIRCUIT SUB 4.2M			
ITEM	PART NO	DESCRIPTION	QTY	ITEM	PART NO	DESCRIPTION	QTY
1	REF	HYDRAULIC RAM	2				
2	HHBC19610	HYDRAULIC HOSE LH	1				
3	HHBC44610	HYDRAULIC HOSE RH	1				
4	HPPD07100	HYD.TEE FITTING	1				
5	FIT-0213	HYD.BULKHEAD FITT.	1				
6	CLP-01012	P CLIP	6				
7	SCW-5180	SELF TAP SCREW	4				
8	PFS-00500	PANEL FASTENER	4				
9	HSS-0086	SETSCREW	2				
10	WSH-0009	PLAIN WASHER	2				
11	NUT-0260	NYLOC NUT	2				



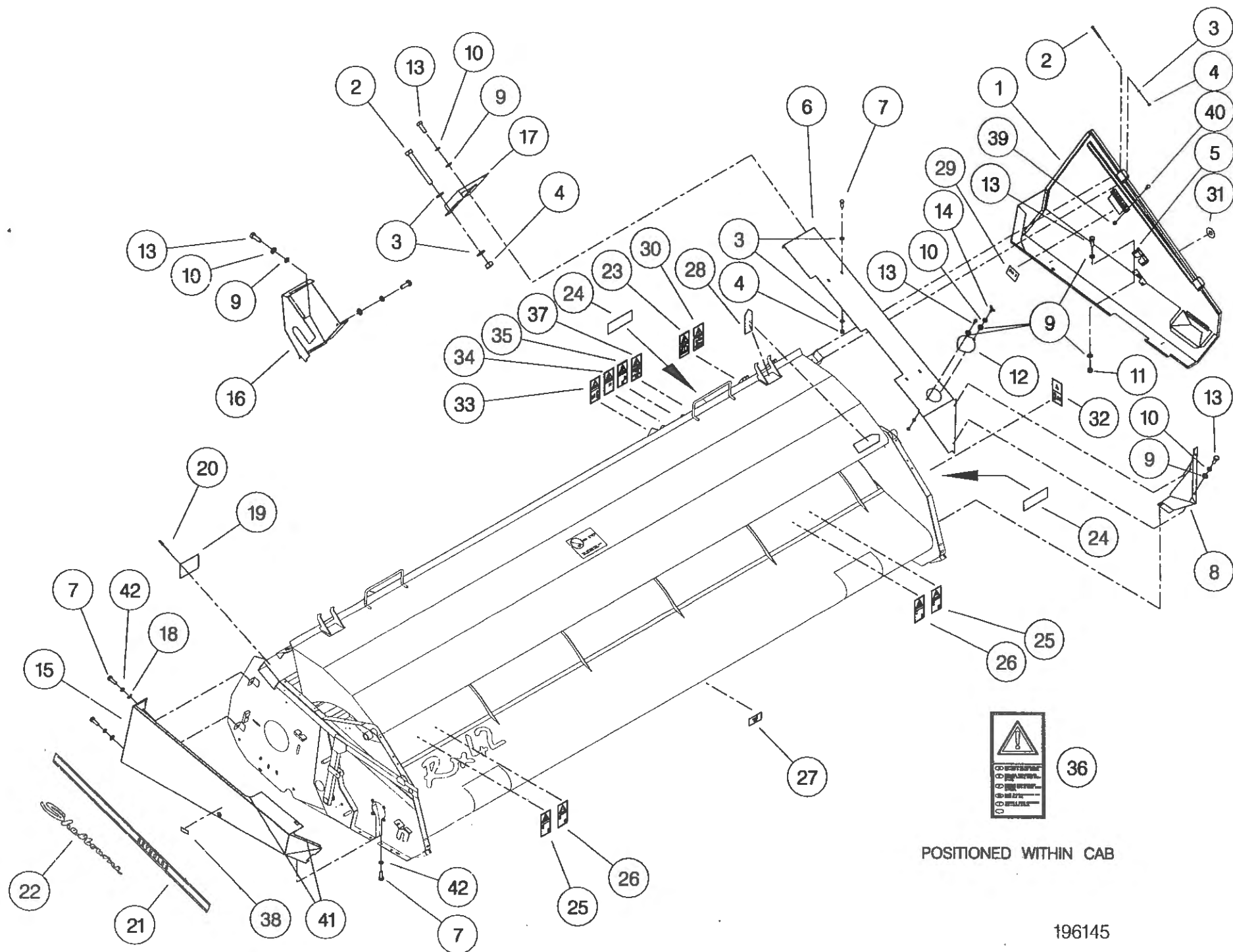
196140

Shelbourne Reynolds Engineering Limited

ASSY NUMBER: 196145 03				ASSY DESCRIPTION: RX48,RX42 EMBLEMS AND GUARDS SUB(1998)			
ITEM	PART NO	DESCRIPTION	QTY	ITEM	PART NO	DESCRIPTION	QTY
1	193338 01	L.H.GUARD	1				
2	BLTA08470	BOLT	3				
3	WSH-0012	PLAIN WASHER	12				
4	NUT-0263	NYLOC NUT	8				
5	LTC-00040	SLAM LATCH	1				
6	193297 01	L.H. TOP COVER	1				
7	HSS-0140	SET SCREW	9				
8	192570 01	FRONT DEFLECTOR L.H.	1				
9	WSH-0009	PLAIN WASHER	10				
10	WSH-0056	SPRING WASHER	8				
11	NUT-0260	NYLOC NUT	3				
12	191355 01	COVER	1				
13	HSS-0084	SET SCREW	12				
14	SCW-4700	WING SCREW	1				
15	193478 01	R.H.GUARD	1				
16	192555 01	REAR DRIVE GUARD	1				
17	193346 01	REAR UPPER GUARD	1				
18	WSH-1038	PENNY WASHER	3				
19	191359 01	IDENTIFICATION PLATE	1				
20	POP-0006	POP RIVET	4				
21	191983 01	EMBLEM (STRIPES & REYNOLDS)	2				
22	191982 01	EMBLEM (SHELBOURNE)	2				
23	610257 01	EMBLEM (READ MANUAL)	1				
24	127075 12	EMBLEM (GREASE 10 HOURS)	2				
25	193388 01	EMBLEM (FLYING OBJECTS)	2				
26	193389 01	EMBLEM (KEEP AWAY)	2				
27	193395 01	EMBLEM (TENSILOCK)	4				
28	190702 04	EMBLEM (SLING POINT)	4				
29	191940 01	EMBLEM (SHEARBOLT PART No.)	1				
30	610250 01	EMBLEM (SAFETY MAINTENANCE)	1				
31	192953 01	EMBLEM (1/4 TURN)	1				
32	193392 01	EMBLEM (STOP ENG BEFORE...)	1				
33	193393 01	EMBLEM (STOP ENG BEFORE...)	1				
34	193390 01	EMBLEM (DONT HANG CHAIN)	1				
35	193391 01	EMBLEM (PTO GUARD)	1				
36	193394 01	EMBLEM (ENGAGE STRIP ROTOR)	1				
37	193387 01	EMBLEM (AUGER/ROTOR SPEED)	1				
38	127075 16	EMBLEM (GREASE 50 HOURS)	6				

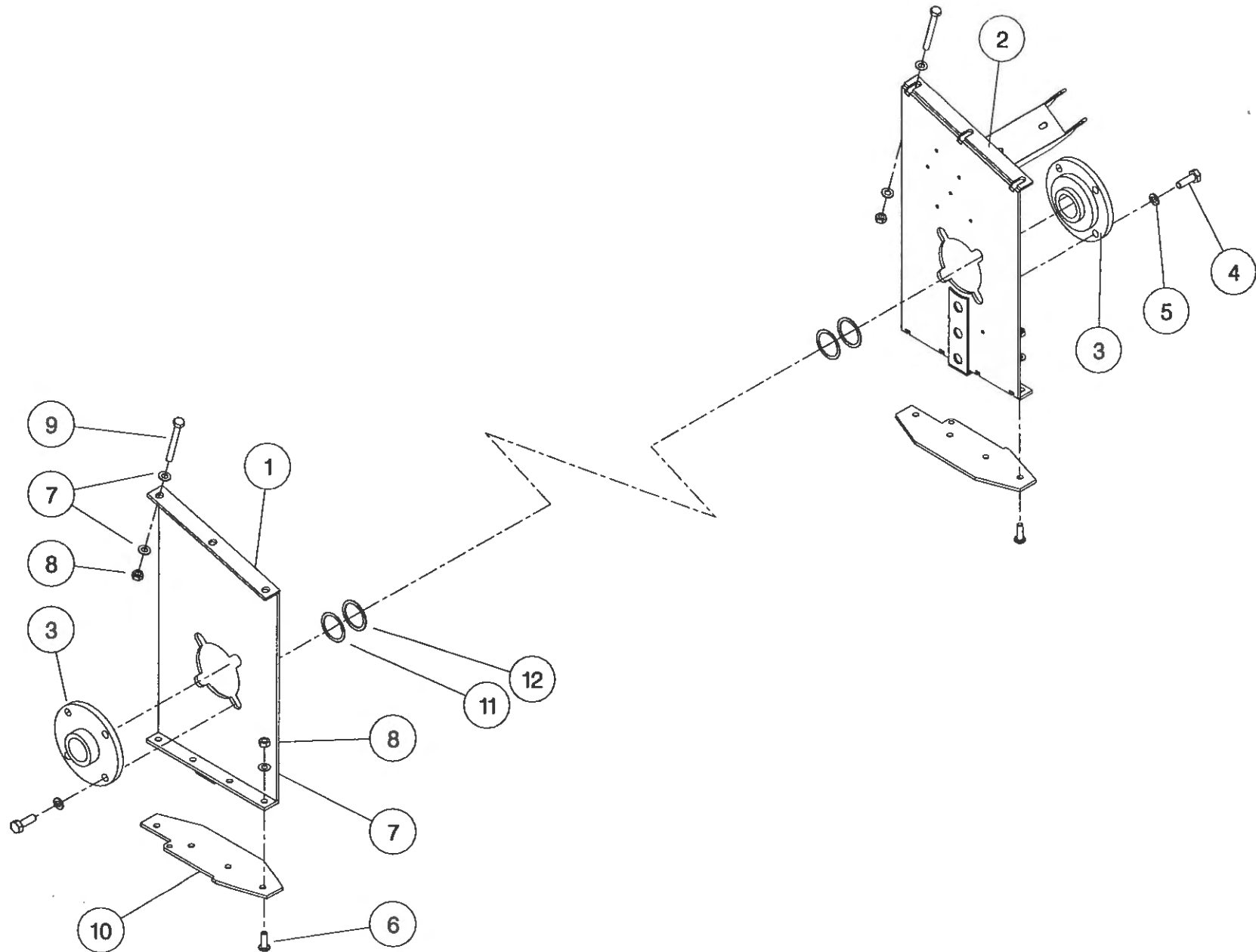
Shelbourne Reynolds Engineering Limited

ASSY NUMBER: 196145 03 CONTINUED				ASSY DESCRIPTION: RX48,RX42 EMBLEMS AND GUARDS SUB(1998)			
ITEM	PART NO	DESCRIPTION	QTY	ITEM	PART NO	DESCRIPTION	QTY
39	NUT-0162	NUT	10				
40	BLTA07320	SHEARBOLT	10				
41	EDS-11400	EDGING STRIP	1.5				
42	WSH-0058	WASHER	4				



Shelbourne Reynolds Engineering Limited

ASSY NUMBER: 196149 01				ASSY DESCRIPTION: RX ROTOR MTG SUB			
ITEM	PART NO	DESCRIPTION	QTY	ITEM	PART NO	DESCRIPTION	QTY
1	193504 01	ROTOR MTG PLATE R.H	1				
2	193295 01	ROTOR MTG PLATE L.H	1				
3	BRG-3275	BEARING	2				
4	HSS-0238	SETSCREW	8				
5	WSH-0065	WASHER	8				
6	SCW-0515	SCREW	8				
7	WSH-0015	WASHER	20				
8	NUT-0265	NUT	14				
9	BLTA10520	BOLT	6				
10	193220 01	DIVIDING PLATE	2				
11	192876 01	SHIM (1mm THICK)					
12	192876 02	SHIM (2mm THICK)					



Shelbourne Reynolds Engineering Limited

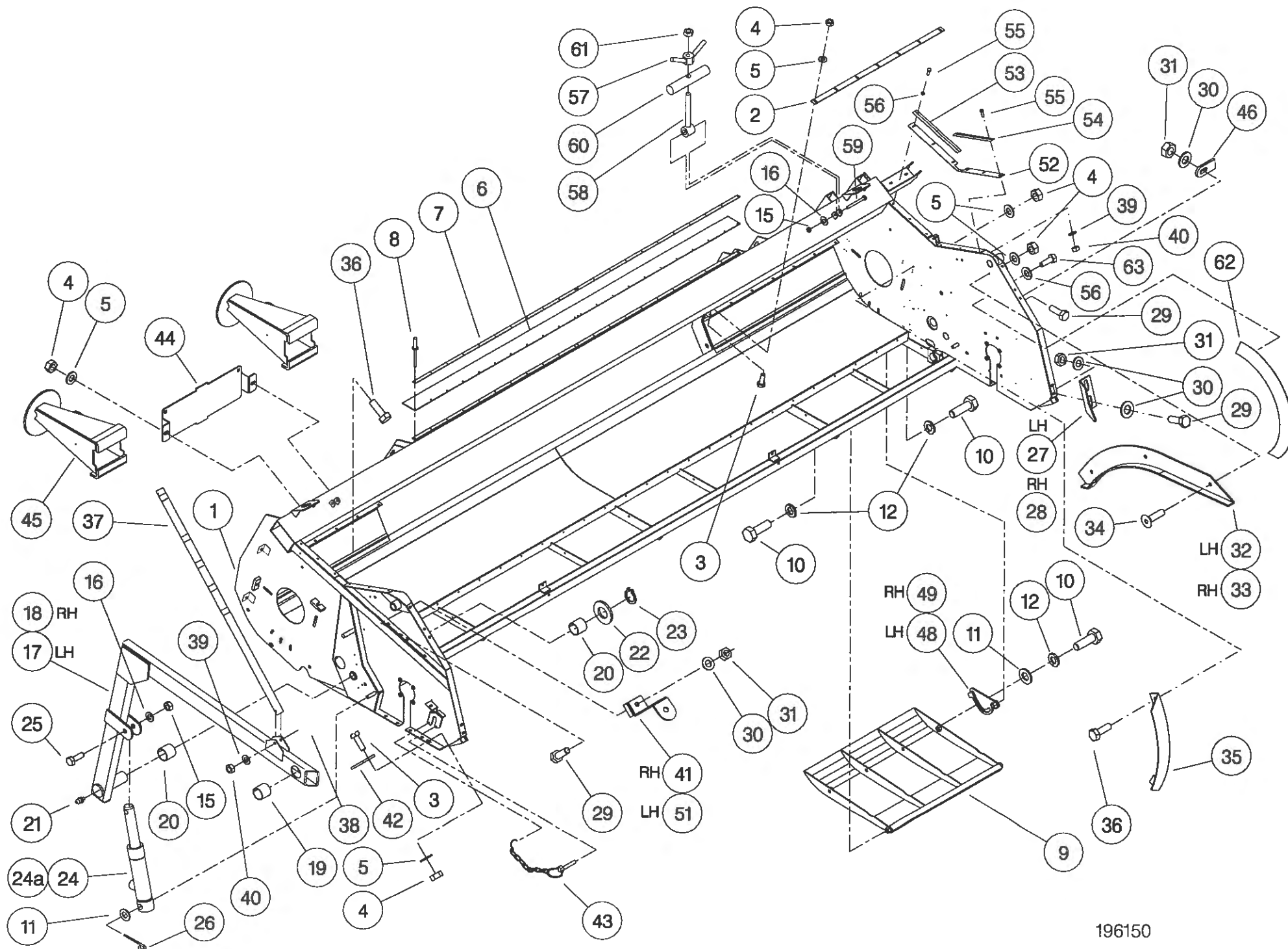
ASSY NUMBER: 196150 07 ASSY DESCRIPTION: FRAME & PARTS SUB (RX42-1998)

ITEM	PART NO	DESCRIPTION	QTY	ITEM	PART NO	DESCRIPTION	QTY
1	193537 01	RX42 MAIN FRAME ASSY	1				
2	193344 02	STRIPPER PLATE	2				
3	BLT-4710	COACH BOLT	16				
4	NUT-0263	NUT	28				
5	WSH-0012	WASHER	28				
6	191340 01	RUBBER SEAL	1				
7	191339 01	CLAMP STRIP	2				
8	POP-0006	POP RIVET	22				
9	193219 01	SKID	2				
10	HSS-0316	SET SCREW	12				
11	WSH-0024	WASHER	6				
12	WSH-0070	WASHER	12				
13							
14							
15	NUT-0269	NUT	4				
16	WSH-0018	WASHER	4				
17	191259 02	ADJ COWL SUPPORT ARM R.H	1				
18	191259 01	ADJ COWL SUPPORT ARM L.H	1				
19	BSH-3030	BUSH	2				
20	BSH-3070	BUSH	4				
21	NIP-0001	GREASE ZERK	2				
22	WSH-1547	WASHER	2				
23	CIR-1150	CIRCLIP	2				
24	193506 01	HYDRAULIC RAM	2				
24a	RMSK00030	SEAL KIT					
25	HSS-0260	SET SCREW	2				
26	PIN-1150	SPLIT PIN	2				
27	192193 01	ADJ COWL STOP L.H	1				
28	192193 02	ADJ COWL STOP R.H	1				
29	HSS-0194	SET SCREW	7				
30	WSH-0015	WASHER	11				
31	NUT-0265	NUT	7				
32	192055 01	RUNNER ASSY L.H	1				
33	192055 02	RUNNER ASSY R.H	1				
34	SCW-1735	SCREW	6				
35	192304 01	AUGER END DEFLECTOR	2				
36	HSS-0140	SET SCREW	6				
37	192494 01	INDICATOR ROD	1				

Shelbourne Reynolds Engineering Limited

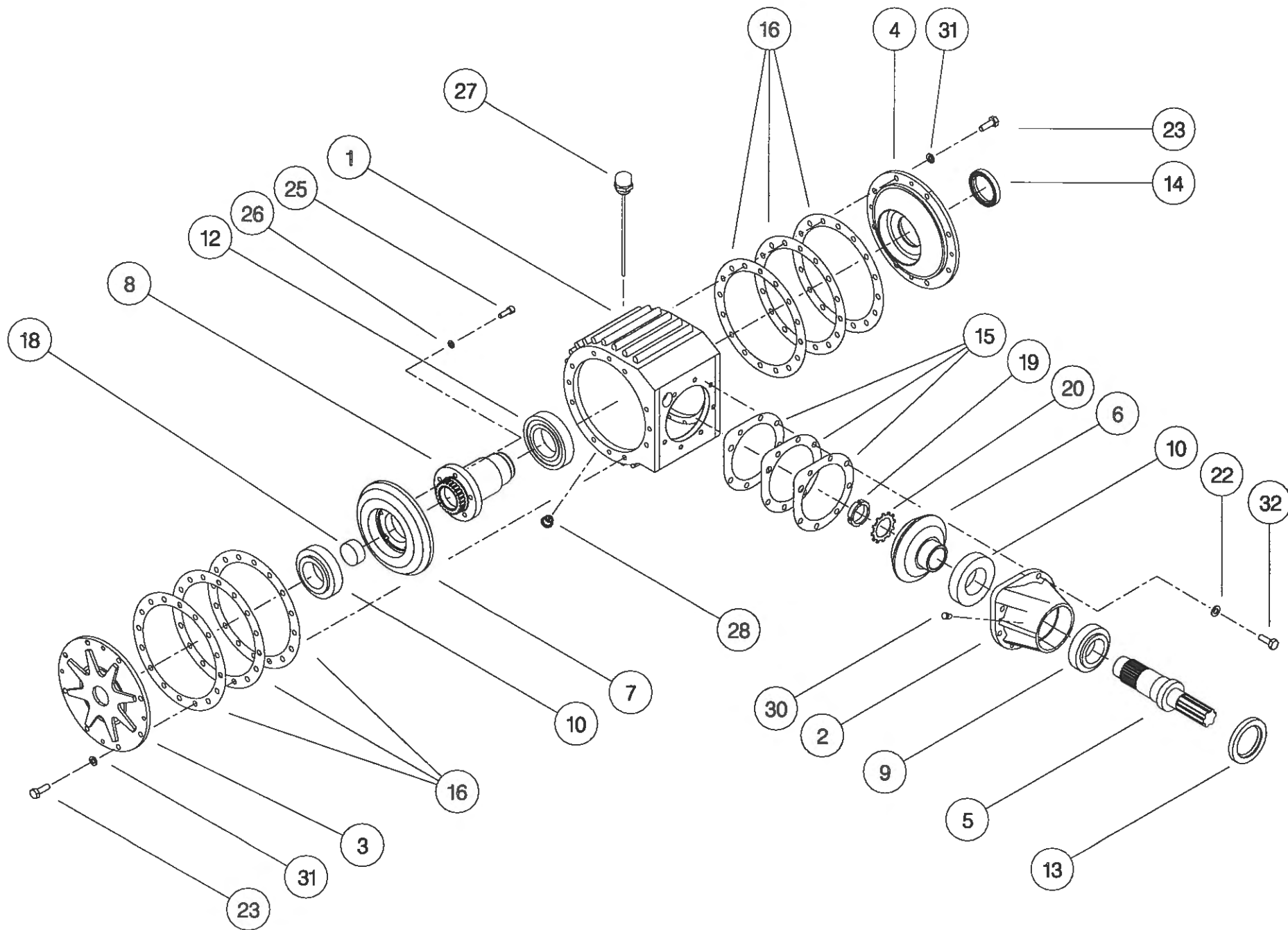
ASSY NUMBER: 196150 07 CONTINUED ASSY DESCRIPTION: FRAME & PARTS SUB (RX42-1998)

ITEM	PART NO	DESCRIPTION	QTY	ITEM	PART NO	DESCRIPTION	QTY
38	HSS-0092	SETSCREW	1				
39	WSH-0009	PLAIN WASHER	7				
40	NUT-0260	NYLOC NUT	7				
41	193480 01	SUPPORT BRACKET RH	1				
42	192543 01	CROP DIVIDER ADJ.PLATE	2				
43	PIN-01790	LYNCH PIN & CHAIN	2				
44	193221 01	HEADER STAND BRACKET	1				
45	193222 01	HEADER FRONT STAND	2				
46	192550 01	NOSE ARM STOP PLATE	1				
47							
48	192954 01	SKID ADJUSTER PLATE L.H	2				
49	192954 02	SKID ADJUSTER PLATE R.H	2				
50							
51	193480 02	SUPPORT BRACKET LH	1				
52	193231 01	RUBBER SEAL	2				
53	193229 01	SEAL CLAMP	2				
54	193230 01	SEAL CLAMP	2				
55	SCW-4960	BUTT.HD.SKT SCREW	12				
56	WSH-0056	SPRING WASHER	12				
57	193244 01	RETAINING NUT	2				
58	193248 01	RETAINING SCREW	2				
59	BLTA12380	BOLT	2				
60	193251 01	RETAINING BAR	2				
61	NUT-0170	PLAIN NUT	2				
62	193363 01	ROTOR DEFLECTOR	2				
63	HSS-0084	SETSCREW	6				



Shelbourne Reynolds Engineering Limited

ASSY NUMBER: GEA-0095				ASSY DESCRIPTION: BEVEL GEARBOX (1.5:1)			
ITEM	PART NO	DESCRIPTION	QTY	ITEM	PART NO	DESCRIPTION	QTY
1	191715 01	GEARBOX CASING	1				
2	191716 01	INPUT HOUSING	1				
3	191717 01	OUTSIDE END COVER	1				
4	191718 01	INSIDE END COVER	1				
5	191819 01	INPUT SHAFT (28T INVOLUTE)	1				
6	191798 01	BEVEL GEAR 20T (28T INV)	1				
7	191799 01	BEVEL GEAR 30T (25T INV)	1				
8	191800 01	OUTPUT SHAFT (25T INVOLUTE)	1				
9	BRG-7000	BEARING	1				
10	BRG-7020	BEARING	2				
11							
12	BRG-7040	BEARING	1				
13	SEA-0590	ROTARY SHAFT SEAL	1				
14	SEA-0600	ROTARY SHAFT SEAL	1				
15	191812	SHIM PACK (INPUT)	1				
16	191813	SHIM PACK (ENDS)	2				
17							
18	191735 01	SHAFT PLUG	1				
19	NUT-3010	LOCK RING	1				
20	WSH-6010	LOCK WASHER	1				
21							
22	WSH-1301	SHAKEPROOF WASHER	7				
23	HSS-0191	SET SCREW	16				
24							
25	SCW-0139	CAP HEAD SCREW	5				
26	WSH-0058	SPRING WASHER	5				
27	FIT-0254	BREATHER/DIP STICK	1				
28	FIT-0253	MAGNETIC DRAIN PLUG	1				
29							
30	FIT-0223	TAPER PLUG	1				
31	WSH-0061	SPRING WASHER	16				
32	SCW-0190	CAP SOC.HEAD SCREW	7				



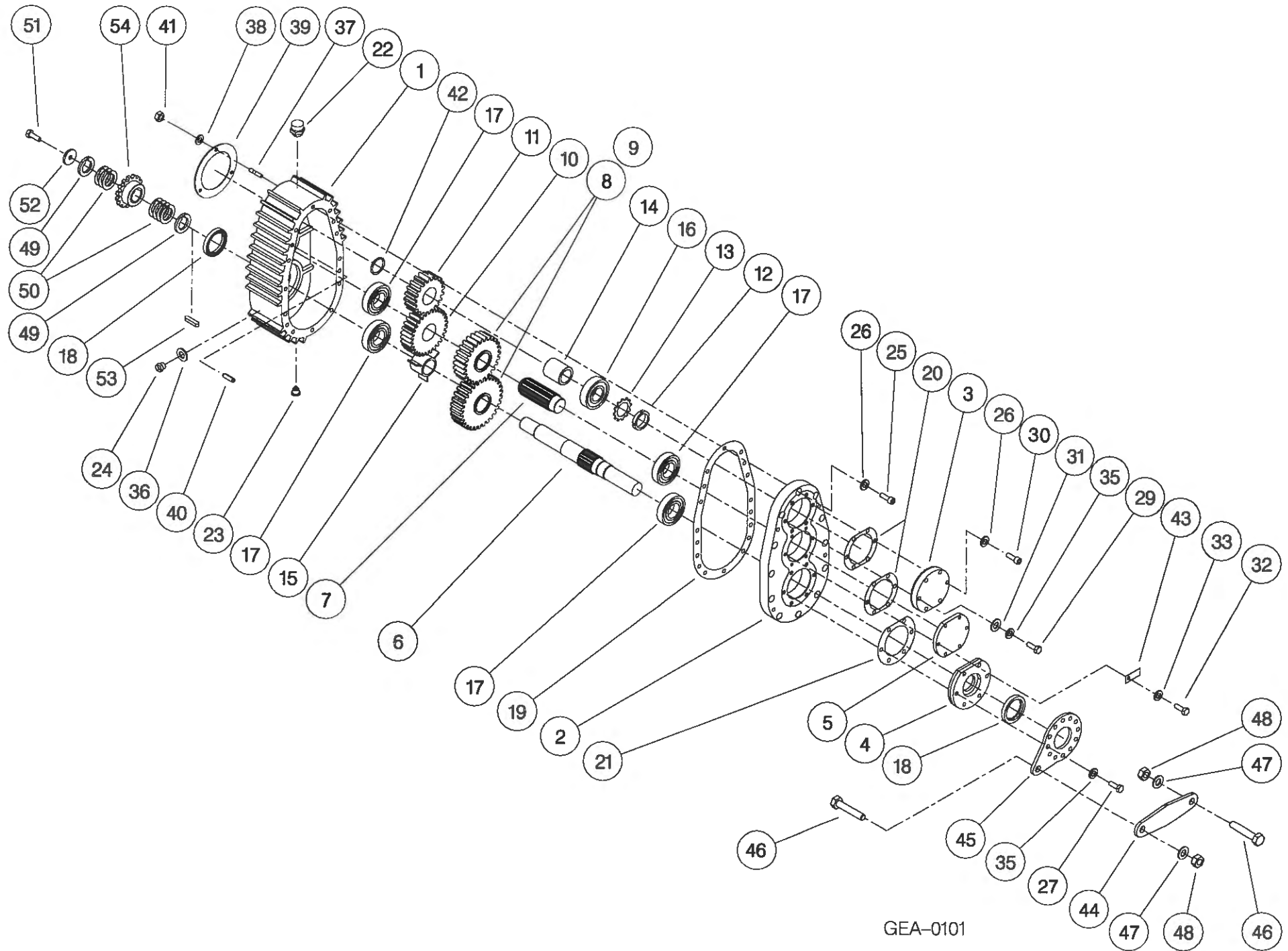
GEA-0095

Shelbourne Reynolds Engineering Limited

ASSY NUMBER:		ASSY DESCRIPTION: SHORT DROPBOX FOR RX & CX (1996)					
ITEM	PART NO	DESCRIPTION	QTY	ITEM	PART NO	DESCRIPTION	QTY
1	191723 01	GEARCASE	1				
2	191723 02	LID	1				
3	191696 01	OUTPUT END CAP	1				
4	191694 01	INPUT FLANGE	1				
5	191693 01	END CAP	1				
6	191807 01	INPUT/AUGER OUTPUT SHAFT (28T INVOLUTE)	1				
7	191801 01	INTERMED. SHAFT (28T INV)	1				
8	*	CHANGE GEAR (SEE DRIVE SUB)					
9	*	CHANGE GEAR (SEE DRIVE SUB)					
10	191803 01	SPUR GEAR 30T (28T INV)	1				
11	191884 01	SPUR GEAR 20T (28T INV)	1				
12	NUT-3000	LOCK RING	1				
13	WSH-6000	LOCK WASHER	1				
14	191725 01	SPACER	1				
15	191894 01	SPACER	1				
16	BRG-6600	BEARING	1				
17	BRG-5800	BEARING	4				
18	SEA-0610	ROTARY SHAFT SEAL	2				
19	191756 01	GASKET	1				
20	191757	SEAL PACK	2				
21	191758	SEAL PACK	1				
22	FIT-0255	BREATHER	1				
23	FIT-0253	MAGNETIC DRAIN PLUG	1				
24	FIT-0251	LEVEL PLUG	1				
25	SCW-0196	CAP HEAD SCREW	12				
26	WSH-1301	SHAKEPROOF WASHER	15				
27	HSS-0202	SETSCREW	6				
28							
29	BLTA10290	BOLT	3				
30	SCW-0190	CAP HEAD SCREW	3				
31	WSH-0015	PLAIN WASHER	3				
32	HSS-0145	SET SCREW	6				
33	WSH-1300	SHAKEPROOF WASHER	6				
34							
35	WSH-0061	SPRING WASHER	9				
36	WSH-1010	DOWTY WASHER	1				
37	191737 01	STUD	3				

Shelbourne Reynolds Engineering Limited

ASSY NUMBER: GEA-0101 CONTINUED				ASSY DESCRIPTION: SHORT DROPBOX FOR RX & CX (1996)			
ITEM	PART NO	DESCRIPTION	QTY	ITEM	PART NO	DESCRIPTION	QTY
38	WSH-0012	PLAIN WASHER	3				
39	191759 01	SEAL	1				
40	191765 01	DOWL	2				
41	NUT-0263	NYLOC NUT	3				
42	CIR-4000	SNAP RING CIRCLIP	1				
43	191928 01	IDENTIFICATION TAG	1				
44	193097 01	FIXED LINK	1				
45	191687 01	LINK BRACKET	1				
46	HSS-0316	SET SCREW	2				
47	WSH-0024	WASHER	2				
48	NUT-0271	NUT	2				
49	191692 01	SPACER	2				
50	191692 02	SHIM	7				
51	HSSF10174	SET SCREW	1				
52	190548 01	PLAIN WASHER	1				
53	K1008045	KEY	1				
54	*	AUGER SPROCKET (SEE DRIVE SUB)					

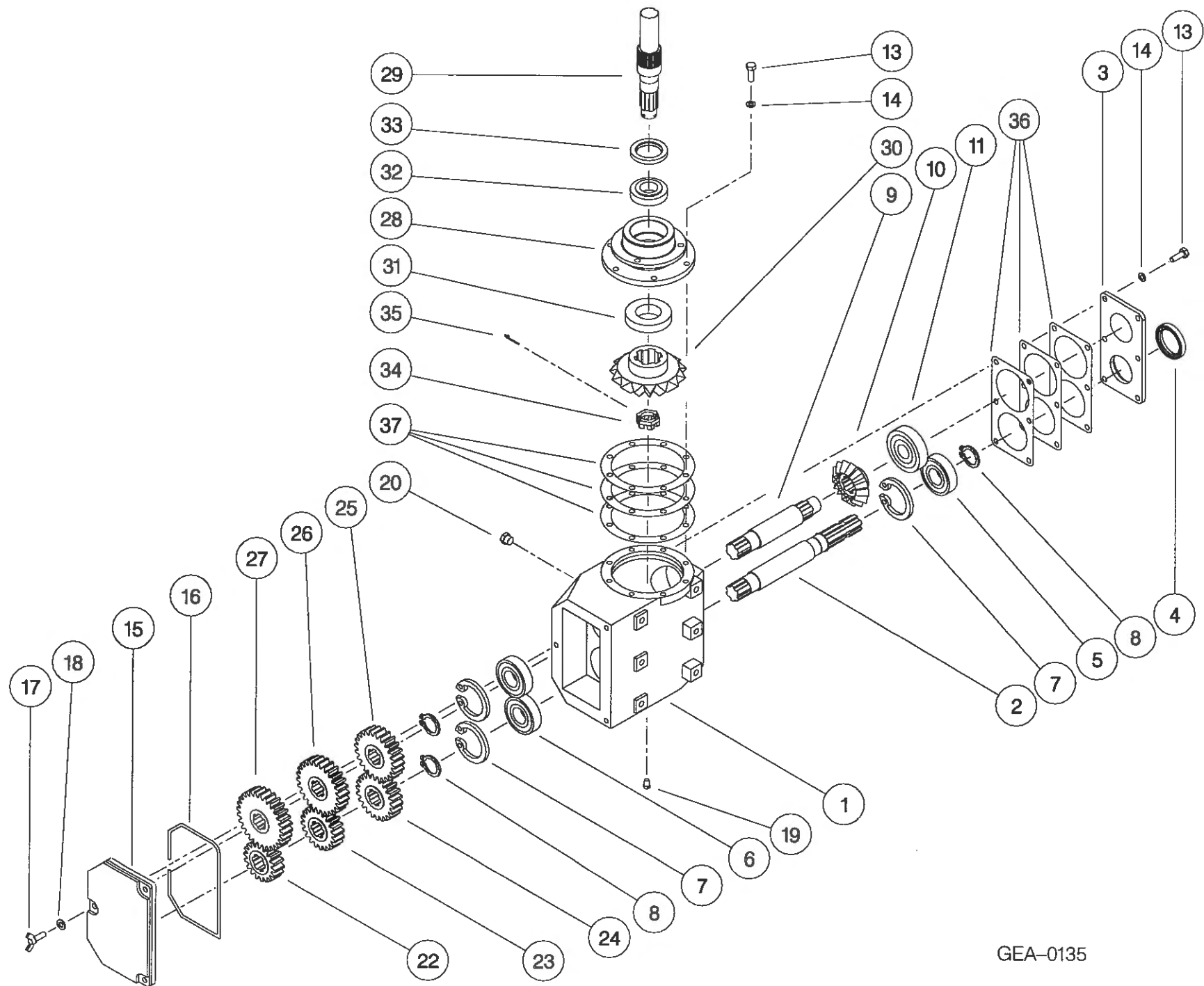


GEA-0101

Shelbourne Reynolds Engineering Limited

ASSY NUMBER: GEA-0135 ASSY DESCRIPTION: 5 SPEED G.BOX ASSY ALUM/FINNED 1997 (WITH DROP BOX)

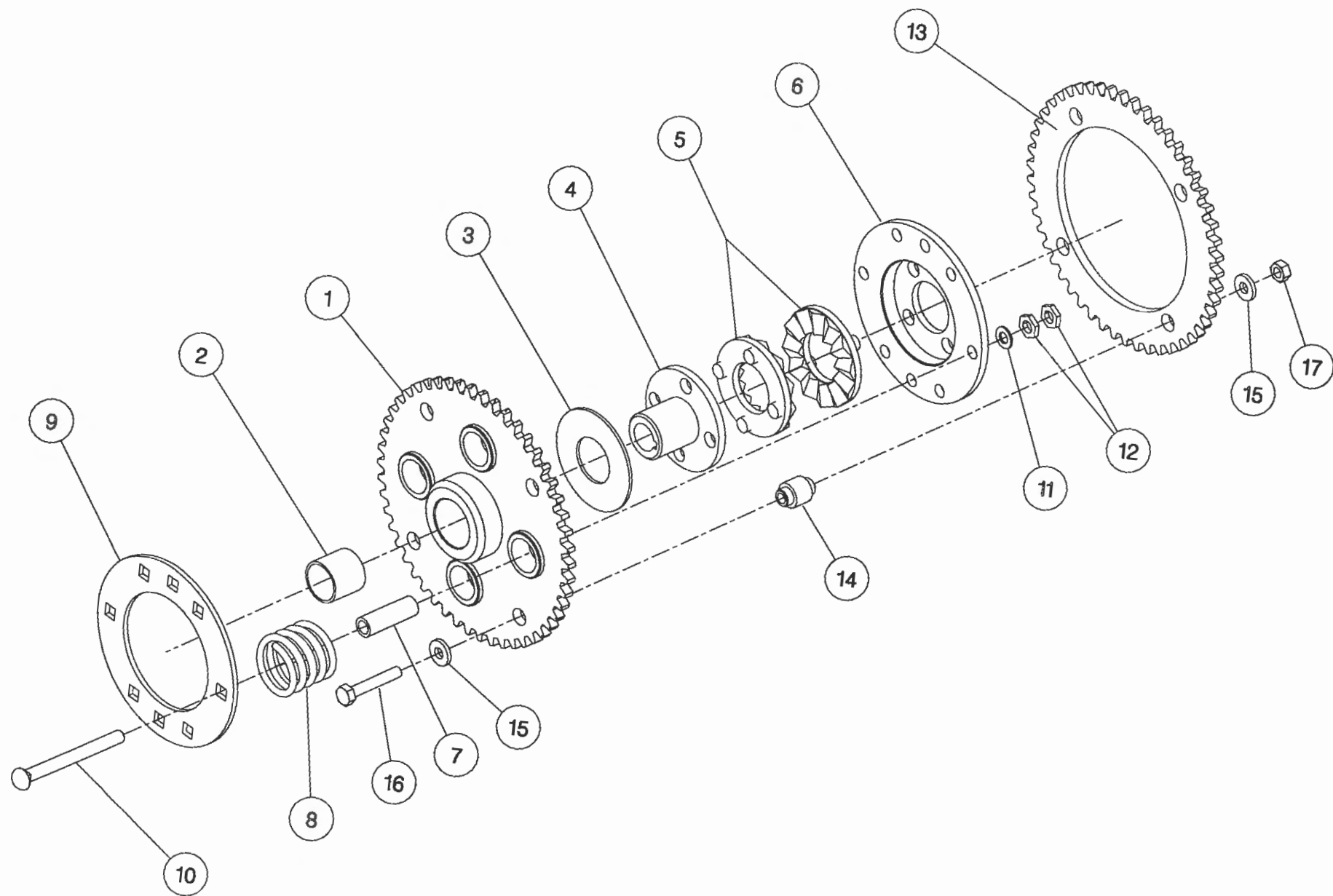
ITEM	PART NO	DESCRIPTION	QTY	ITEM	PART NO	DESCRIPTION	QTY
1	191821 01	GEARBOX CASING	1				
2	191829 01	INPUT SHAFT	1				
3	191825 01	SEAL HOUSING	1				
4	SEA-0550	ROTARY SHAFT SEAL	1				
5	BRG-6600	BEARING	1				
6	BRG-6601	BEARING	2				
7	CIR-3800	CIRCLIP	3				
8	CIR-2700	CIRCLIP	3				
9	191828 01	LAYSHAFT	1				
10	191823 01	BEVEL GEAR (15T)	1				
11	BRG-6800	BEARING	1				
12							
13	HSS-0194	SET SCREW	14				
14	WSH-0061	SPRING WASHER	14				
15	192924 01	REMOVABLE COVER	1				
16	ORA260000	'O' RING SEAL STRIP	0.7				
17	SCW-4760	WING SCREW	3				
18	WSH-1301	SHAKEPROOF WASHER	3				
19	FIT-0223	PLUG	1				
20	FIT-0218	BREATHER	1				
21							
22	191822 18	CHANGE GEAR (18T)	1				
23	191822 20	CHANGE GEAR (20T)	1				
24	191822 22	CHANGE GEAR (22T)	1				
25	191822 24	CHANGE GEAR (24T)	1				
26	191822 26	CHANGE GEAR (26T)	1				
27	191822 28	CHANGE GEAR (28T)	1				
28	191691 02	OUTPUT HOUSING (HOLES,1997)	1				
29	191885 01	OUTPUT SHAFT	1				
30	191824 01	BEVEL GEAR (18T)	1				
31	BRG-6000	BEARING	1				
32	BRG-5700	BEARING	1				
33	SEA-0565	ROTARY SHAFT SEAL	1				
34	191843 01	SLOTTED NUT	1				
35	PIN-1168	SPLIT PIN	1				
36	191830	GASKET SET	1				
37	191831	GASKET SET	1				



GEA-0135

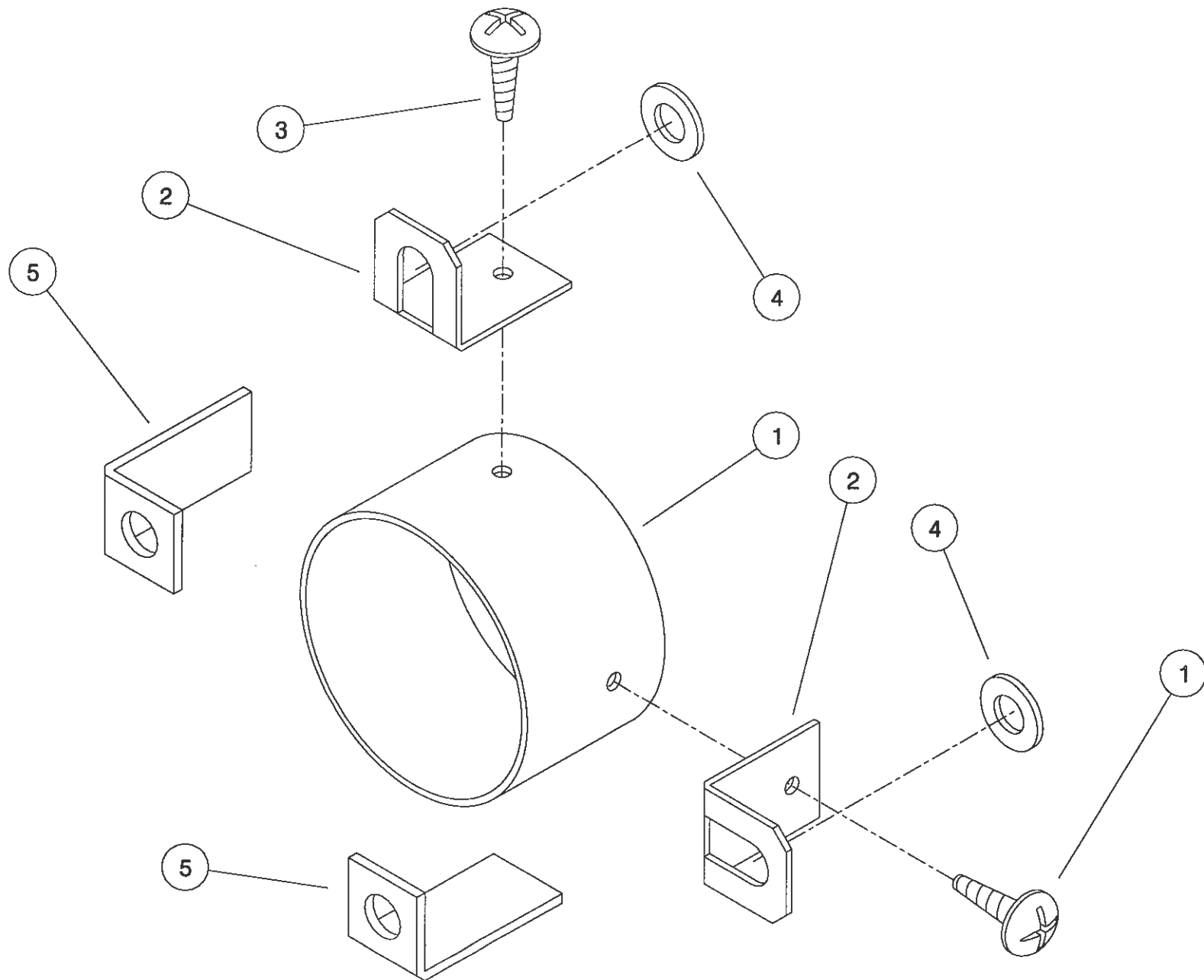
Shelbourne Reynolds Engineering Limited

ASSY NUMBER:		KIT-00116		ASSY DESCRIPTION:		AUGER DRIVE SPROCKET/CLUTCH ASSY	
ITEM	PART NO	DESCRIPTION	QTY	ITEM	PART NO	DESCRIPTION	QTY
1	192018 01	SPROCKET ASSY 50T	1				
2	BSH-3019	BUSH	1				
3	192008 01	THRUST WASHER	1				
4	192013 01	CLUTCH HUB	1				
5	131005	CLUTCH PLATE	2				
6	192014 01	DRIVE DISC	1				
7	131073 02	SPACER	4				
8	131063	SPRING	4				
9	192009 01	FIXING RING	1				
10	BLTF12563	COACH BOLT	4				
11	WSH-0018	PLAIN WASHER	4				
12	NUT-0370	HALF NUT	8				
13	192254 01	SPROCKET 50T	1				
14	192253 02	SPACER	4				
15	190119 11	WASHER	8				
16	BLTA10440	BOLT	4				
17	NUT-0265	NYLOC NUT	4				



Shelbourne Reynolds Engineering Limited

ASSY NUMBER:		KIT-00525		ASSY DESCRIPTION: PTO END GUARD			
ITEM	PART NO	DESCRIPTION	QTY	ITEM	PART NO	DESCRIPTION	QTY
1	192985 06	GUARD TUBE	1				
2	192992 01	GUARD SECURING BRACKET	2				
3	SCW-5104	SCREW	2				
4	WSH-0015	WASHER	2				
5	191763 01	PTO BRACKET	2				



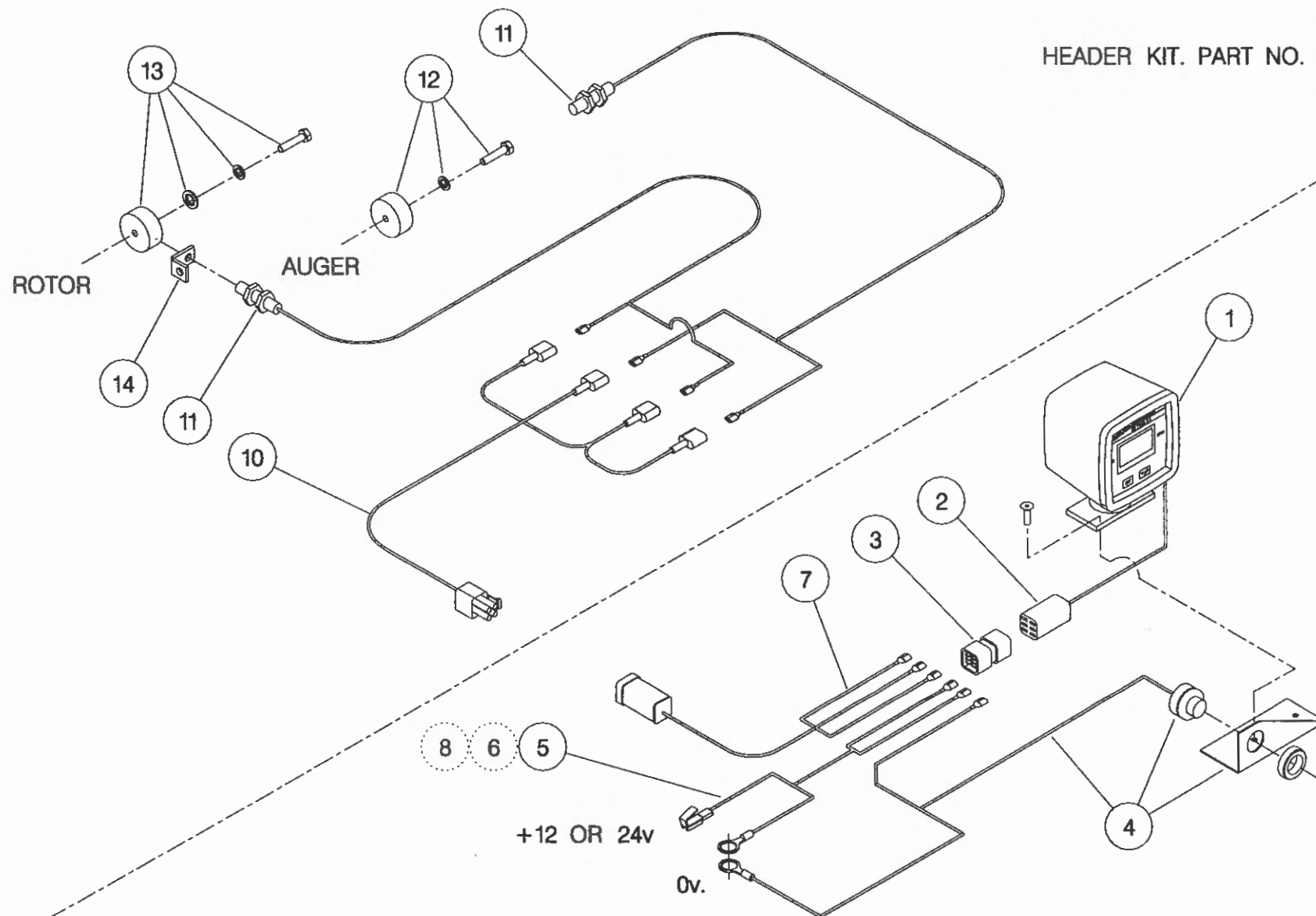
THIS KIT FIXES TO :
 R.X HEADERS - DIRECTLY ON TO DROP BOX ASSY.
 C.X HEADERS - ON TO REAR SHAFT SUPPORT BEARING PLATE.

KIT-00525

Shelbourne Reynolds Engineering Limited

ASSY NUMBER: RDS-0001/RDS-0005				ASSY DESCRIPTION: TACHO KIT			
ITEM	PART NO	DESCRIPTION	QTY	ITEM	PART NO	DESCRIPTION	QTY
1	RDS-0010	TACHO HEAD COMPLETE	1	13	RDS-0020	MAGNET CARRIER ,	1
2	RDS-0011	TACHO HEAD PLUG & ARMS	1			SET SCREW ,	1
3	RDS-0012	HARTING CONNECTOR &	1			PENNY WASHER &	1
		STICKER	1			SPRING WASHER	1
4	RDS-0013	AUDIBLE ALARM,	1	14	RDS-0021	ROTOR SENSOR BRACKET	1
		FIXING BRACKET &	1				
		SELF TAP.SCREWS	2				
5	RDS-0014	POWER CONNECTION LEAD	1				
6	FUS-0022	FUSE	1				
7	RDS-0015	COMBINE LEAD	1				
8	RDS-0016	24V-12V CONVERTER KIT (NOT INCLUDED IN RDS-0001)	1				
9							
10	RDS-0017	HEADER LEAD	1				
11	RDS-0018	SHAFT SENSOR	2				
12	RDS-0019	MAGNET ,	1				
		TAPTITE BOLT &	1				
		FIBRE WASHER	1				

HEADER KIT. PART NO. RDS - 0005



COMBINE KIT. PART NO. RDS - 0001

NOTE ;

ITEM 6 IS USED IF POWER SUPPLY IS NOT FUSED.

ITEM 8 IS USED IF POWER SUPPLY IS 24V, -VE EARTH. (NOT INCLUDED IN RDS - 0001).

ITEM 4 (ALARM) IS BUILT INTO ITEM 1 (TACHO HEAD) ON LATER MODELS.

NUMERIC PARTS LIST

PART No.	PAGE	PART No.	PAGE	PART No.	PAGE
127075 12	31	191774 01	8	192253 02	48
127075 16	31	191777 01	8	192254 01	48
131005	48		26	192258 01	8
131014 01	8	191798 01	40	192263 01	8
	26	191799 01	40	192265 01	8
131063	48	191800 01	40	192266 01	17
131073 02	48	191801 01	43	192273 01	17
190060 06	8	191803 01	43	192304 01	37
	26	191807 01	43	192307 01	14
190119 04	26	191812	40	192310 01	14
190119 05	6	191813	40	192311 05	14
190119 11	48	191819 01	40	192344 01	8
190361 01	6	191821 01	46	192354 01	17
190548 01	43	191822 18	46	192355 01	17
190702 04	31	191822 20	46	192494 01	37
191040 01	8	191822 22	46	192524 10	6
	26	191822 24	46	192533 01	10
191259 01	37	191822 26	46	192533 02	10
191259 02	37	191822 28	46	192537 01	10
191339 01	37	191823 01	46	192537 02	10
191340 01	37	191824 01	46	192543 01	37
191355 01	31	191825 01	46	192550 01	37
191359 01	31	191828 01	46	192555 01	31
191642 01	6	191829 01	46	192570 01	31
191652 01	26	191830	46	192636 01	12
191680 01	26	191831	46	192636 06	12
191687 01	43	191843 01	46	192679 01	24
191691 02	46	191862 01	10	192718 01	6
191692 01	43	191884 01	43		20
191692 02	43	191885 01	46	192812 01	20
191693 01	43	191894 01	43	192813 01	20
191694 01	43	191928 01	43	192876 01	34
191696 01	43	191940 01	31	192876 02	34
191715 01	40	191981 01	6	192890 04	24
191716 01	40	191982 01	31	192892 01	24
191717 01	40	191983 01	31	192892 02	24
191718 01	40	192008 01	48	192892 03	24
191723 01	43	192009 01	48	192897 01	24
191723 02	43	192011 01	14	192899 01	24
191725 01	43	192013 01	48	192924 01	46
191735 01	40	192014 01	48	192953 01	31
191737 01	43	192018 01	48	192954 01	37
191756 01	43	192037 01	6	192954 02	37
191757	43	192038 01	6	192959 01	24
191758	43	192055 01	37	192969 01	17
191759 01	43	192055 02	37	192970 01	17
191763 01	50	192091 01	26	192970 02	17
191765 01	43	192193 01	37	192985 06	50
191770 01	10	192193 02	37	192992 01	50
191774 01	26	192223 04	14	193097 01	43

NUMERIC PARTS LIST

PART No.	PAGE	PART No.	PAGE	PART No.	PAGE
193118 01	24	AUG-03000	14	CIR-2700	46
193118 02	24	BLT-2316	8	CIR-3800	46
193203 01	14	BLT-3745	12	CIR-4000	43
193219 01	37	BLT-3790	12	CLP-01012	28
193220 01	34	BLT-4710	37	EDS-11400	31
193221 01	37	BLTA06320	17	EDS-11600	20
193222 01	37	BLTA06470	17	FIT-0213	28
193229 01	37	BLTA07320	31	FIT-0218	46
193230 01	37	BLTA08470	31	FIT-0223	40
193231 01	37	BLTA08500	17		46
193244 01	37	BLTA08530	17	FIT-0251	43
193248 01	37	BLTA10290	20	FIT-0253	40
193251 01	37		43		43
193295 01	34	BLTA10350	17	FIT-0254	40
193297 01	31	BLTA10440	48	FIT-0255	43
193320 01	14	BLTA10520	34	GEA-0095	26
193321 01	17	BLTA10530	17	GEA-0101	26
193322 01	17	BLTA12290	26	GEA-0135	26
193323 01	20	BLTA12380	37	GSTA14407	20
193324 01	17	BLTF12563	48	HHBC19610	28
193325 01	6	BRG-0218	14	HHBC44610	28
193338 01	31	BRG-0240	12	HPPD07100	28
193344 02	37	BRG-1994	8	HSS-0084	17
193346 01	31	BRG-1995	8		31
193348 01	22		17		37
193348 02	22		26	HSS-0086	8
193363 01	37	BRG-22500	8		28
193387 01	31	BRG-3275	34	HSS-0092	37
193388 01	31	BRG-5700	46	HSS-0140	6
193389 01	31	BRG-5800	43		14
193390 01	31	BRG-6000	46		31
193391 01	31	BRG-6600	43		37
193392 01	31		46	HSS-0145	43
193393 01	31	BRG-6601	46	HSS-0155	10
193395 01	31	BRG-6800	46	HSS-0191	10
193478 01	31	BRG-7000	40		40
193480 01	37	BRG-7020	40	HSS-0194	26
193480 02	37	BRG-7040	40		37
193504 01	34	BRG-7080	14		46
193506 01	37	BSH-1530	17	HSS-0202	43
193537 01	37		26	HSS-0238	26
200035 03	12	BSH-3030	20		34
200038 01	12		37	HSS-0241	12
200120 02	12	BSH-3070	37	HSS-0260	37
610250 01	31	BSHZ02553	8	HSS-0265	17
610257 01	31	CHN-01682	8	HSS-0315	17
AUG-01000	14	CIR-0470	8	HSS-0316	37
AUG-01500	14		26		43
AUG-02000	14	CIR-1125	8	HSS-0318	8
AUG-02500	14	CIR-1150	37	HSS-0330	26

NUMERIC PARTS LIST

PART No.	PAGE
HSSA10680	17
HSSF08174	24
HSSF10174	43
HSSF12204	14
HSSG1020	24
HSSG1217	26
K0807035	8
K0807050	12
K0807060	12
K1008045	43
KIT-00116	12
KIT-00525	26
LTC-00040	31
NIP-0001	20
.....	37
NUT-0162	31
NUT-0170	12
.....	37
NUT-0260	8
.....	14
.....	17
.....	28
.....	31
.....	37
NUT-0263	17
.....	31
.....	37
.....	43
NUT-0265	10
.....	12
.....	14
.....	17
.....	20
.....	26
.....	34
.....	37
.....	48
NUT-0269	8
.....	12
.....	17
.....	26
.....	37
NUT-0271	8
.....	26
.....	43
NUT-0370	48
NUT-0580	12
NUT-3000	43
NUT-3010	40
ORA260000	46

PART No.	PAGE
PFS-00500	28
PIN-01790	37
PIN-1150	12
.....	37
PIN-1168	46
POP-0006	6
.....	31
.....	37
PSP-01201	17
PSP-01800	17
PTO-09011	26
SCCA10412	14
SCW-0139	40
SCW-0190	40
.....	43
SCW-0196	43
SCW-0515	34
SCW-1735	37
SCW-4535	12
SCW-4700	31
SCW-4760	46
SCW-4960	14
.....	37
SCW-5104	50
SCW-5180	24
.....	28
SEA-0550	46
SEA-0565	46
SEA-0590	40
SEA-0600	40
SEA-0610	43
SPGA32221	17
WSH-0009	8
.....	14
.....	17
.....	28
.....	31
.....	37
WSH-0012	14
.....	17
.....	31
.....	37
.....	43
WSH-0015	10
.....	17
.....	20
.....	26
.....	34
.....	43
.....	50

PART No.	PAGE
WSH-0015	12
.....	14
.....	37
WSH-0018	8
.....	12
.....	17
.....	26
.....	37
.....	48
WSH-0024	8
.....	17
.....	26
.....	37
.....	43
WSH-0030	12
WSH-0056	14
.....	17
.....	31
.....	37
WSH-0058	6
.....	10
.....	14
.....	31
.....	40
WSH-0061	17
.....	20
.....	40
.....	43
.....	46
WSH-0065	26
.....	34
WSH-0070	8
.....	17
.....	37
WSH-1010	43
WSH-1034	24
WSH-1038	17
.....	31
WSH-1300	43
WSH-1301	40
.....	43
.....	46
WSH-1547	37
WSH-6000	43
WSH-6010	40

