

# *RX60 Shelbourne Header* (1999-AUS.)

## PARTS MANUAL



**Shelbourne Reynolds Engineering Ltd**

**Stanton**

**Bury St Edmunds**

**Suffolk IP31 2AR**

**England**

**Telephone: 01359 250415**

**Fax. No: 01359 250464**

**(Stores direct 01359 251231)**

**(Stores direct 01359 252031)**



## **SHELBOURNE HEADER PARTS MANUAL**

Your *Shelbourne* Header is designed to fit many different types of combine.

For this reason the machine number index is broken down into sections for identification. Your serial and machine numbers are listed below:

SHELBOURNE HEADER SERIAL NUMBER \_\_\_\_\_

SHELBOURNE HEADER MACHINE NUMBER \_\_\_\_\_

ADAPTOR PLATE ASSEMBLY \_\_\_\_\_

DRIVE KIT \_\_\_\_\_

HYDRAULIC FITTING KIT \_\_\_\_\_

OTHER KIT OPTIONS \_\_\_\_\_

\_\_\_\_\_

\_\_\_\_\_

This manual contains all parts common to the *Shelbourne* Header and is used in conjunction with the combine fittings manual, which contains the adaptor plate, and drive kit parts and fitting, and any other options available.

### **MACHINE IDENTIFICATION**

The *Shelbourne* Header machine identification number is engraved on a plate on the top right hand corner of the header.

The adaptor plate has a plate on the top right hand corner also with the adaptor plate assembly number engraved on it.

The drive kit can be identified by description, and use of the drive kit identification number marked above.

## ORDERING SPARE PARTS

To ensure that you order the correct part from your SRE dealer please use the following procedure.

### ALWAYS QUOTE THE MACHINE AND SERIAL NUMBERS WHEN ORDERING.

Refer to the front of this parts list book (machine assemblies), decide if the part you want is on:

*Shelbourne* Head  
Adaptor Kit  
Drive Kit

If your part is on the Adaptor Kit, identify by matching the part number from the adaptor plate with that in the top left hand corner of the parts lists. You will find the appropriate drawing accompanying the parts list.

If the part you require is on the drive kit, ensure that you have the parts listing for the correct combine model and width. Then progress through to the next drawing following that list, for indication of that part.

If the part you require is on the *Shelbourne* Head assembly, identify the appropriate assembly by matching the part number from the *Shelbourne* Head with the page with the same number marked on the top left hand side.

Use the following sub assembly numbers and descriptions to find the area of the machine that your part is required, i.e. you need a part which is fitted to the auger, your part will be in the auger assembly parts list.

Having decided which sub-assembly your part should be under, use the number beside that sub-assembly description which will begin with 1960-- -- to find the parts listing of the sub-assembly further on in the manual. The number will be printed in the top left hand corner, the sub-assemblies are in numerical order.

Having found the correct parts list, you will find the corresponding drawing by processing through the manual to the next drawing.

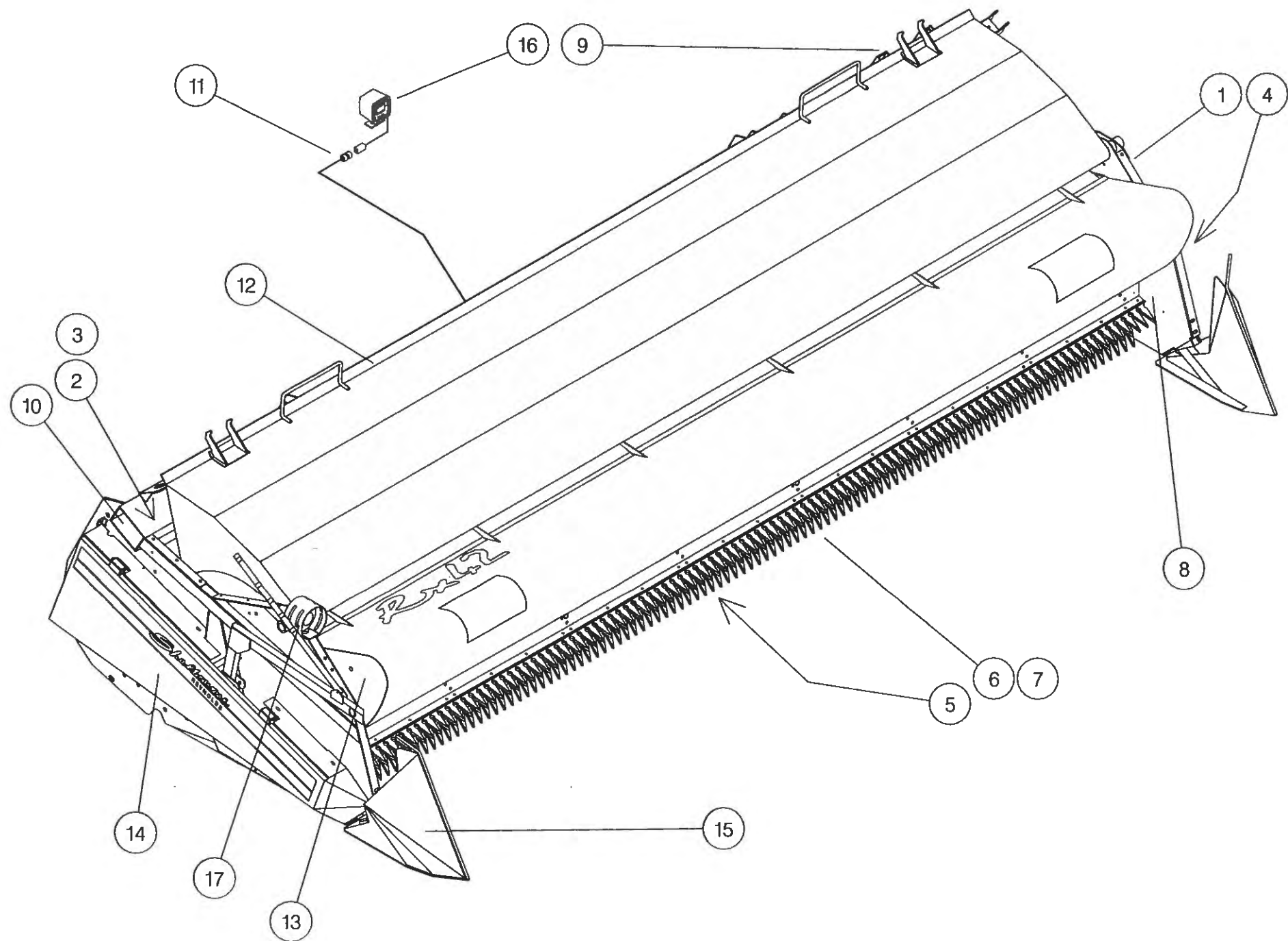
The drawings indicate the components by item numbers which you will find are repeated in the left hand side of your parts listing, and therefore referring to the correct part.

If the item within the sub-assembly is a further collection of parts (i.e. a KIT within a sub assembly) then the parts listing for this will be found just after the 1960-- -- sub-assemblies. These smaller assemblies will be in alphabetical and numerical order.



**Shelbourne Reynolds Engineering Limited**

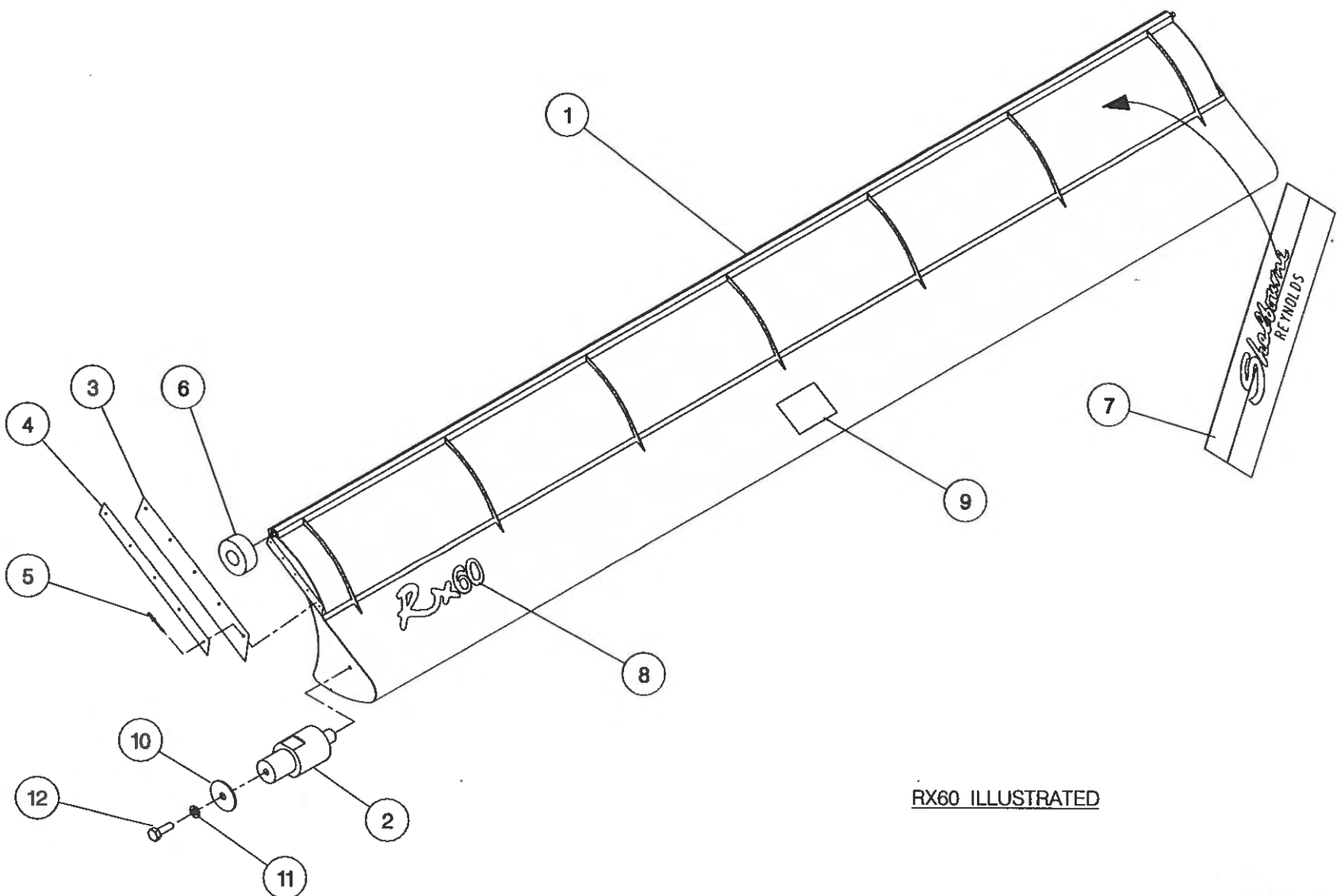
ASSY NUMBER: 196551 10				ASSY DESCRIPTION: RX60 SHAKERPAN SHELBOURNE HEADER (1999)			
ITEM	PART NO	DESCRIPTION	QTY	ITEM	PART NO	DESCRIPTION	QTY
1	196142 30	FRAME & PARTS	1				
2	196141 10	AUGER ASSY	1				
3	196102 04	AUGER MTG SUB	1				
4	196067 02	DRIVE COMPONENTS	1				
5	196123 10	SHAKERPAN SUB	1				
6	196097 10	STRIPPING ROTOR ASSY RH	1				
7	196097 11	STRIPPING ROTOR ASSY LH	1				
8	196144 01	ROTOR MTG SUB	1				
9	196119 01	ROTOR/AUGER DRIVE SUB	1				
10	196140 10	HYDRAULICS	1				
11	RDS-0005	HEADER MONITORING KIT	1				
12	196120 10	HOOD SUB ASSY	1				
13	196053 50	ADJ CROP DEFLECTOR SUB	1				
14	196145 01	EMBLEMS & GUARDS	1				
15	196078 01	TORPEDO DIVIDER SUB	1				
OR	196184 01	SHORT DIVIDER SUB	1				
16	RDS-0001	COMBINE MONITOR KIT	1				
17	196143 10	HEADER LIGHTS SUB	1				



**Shelbourne Reynolds Engineering Limited**

ASSY NUMBER:		196053 50	ASSY DESCRIPTION: ADJ.CROP DEFLECTOR SUB ASSY (RX60)				
ITEM	PART NO	DESCRIPTION	QTY	ITEM	PART NO	DESCRIPTION	QTY
1	191285 02	ADJ.CROP DEF(ST.STEEL-6.0M)	1				
2	190361 01	PIVOT BUSH	2				
3	192037 01	RUBBER SEAL	2				
4	192038 01	CLAMP STRIP	2				
5	POP-0006	POP RIVET	10				
6	191642 01	ROLLER	2				
7	191981 01	EMBLEM (SHEL.REYNOLDS)	1				
8	192524 07	EMBLEM (RX60)	1				
9	192718 01	TRANSFER (NO STEP)	1				
10	190119 05	PLAIN WASHER	2				
11	WSH-0058	WASHER	2				
12	HSS-0140	SETSCREW	2				

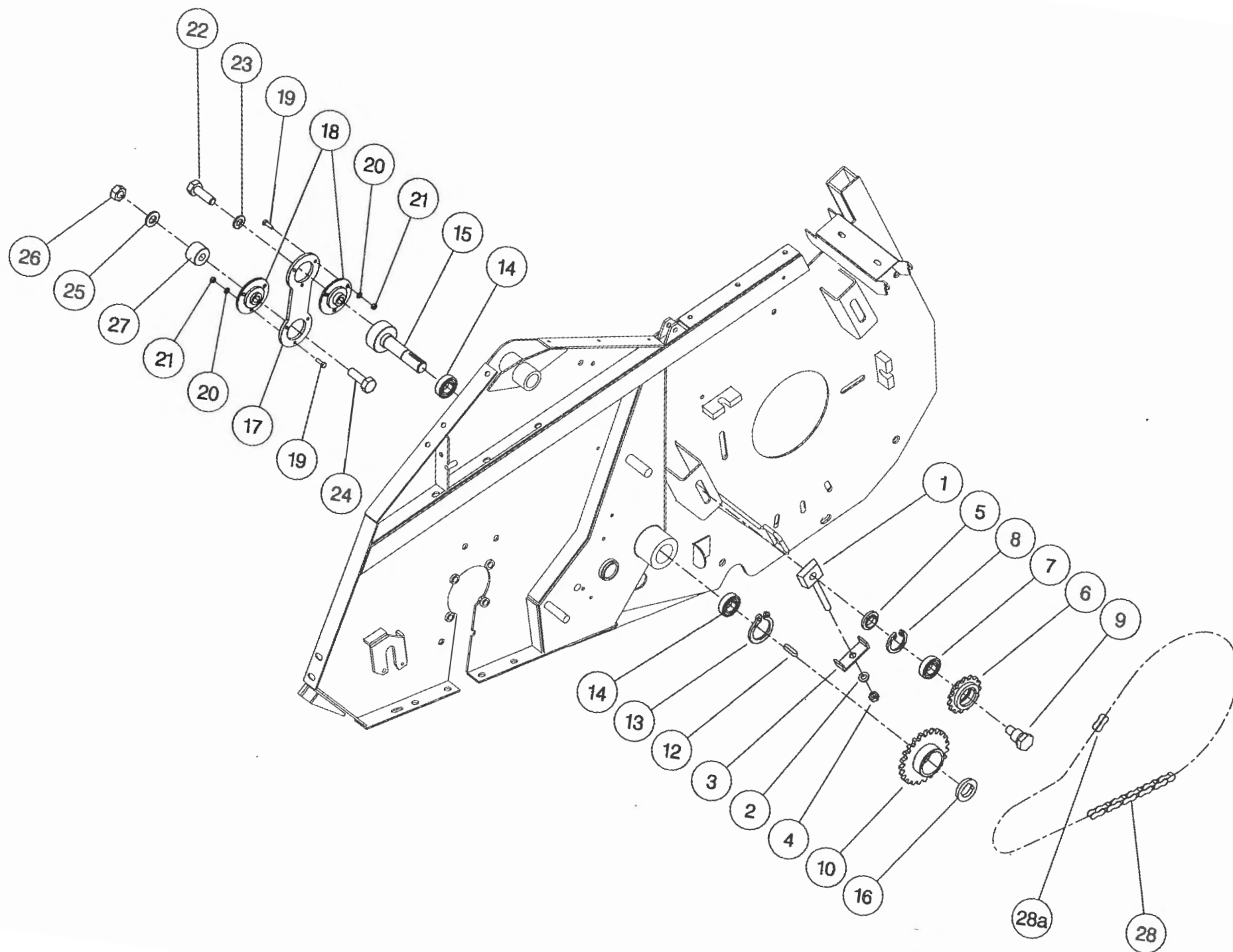




RX60 ILLUSTRATED

**Shelbourne Reynolds Engineering Limited**

ASSY NUMBER: 196067 02				ASSY DESCRIPTION:		DRIVE PARTS SHAKERPAN STD	
ITEM	PART NO	DESCRIPTION	QTY	ITEM	PART NO	DESCRIPTION	QTY
1	191777 01	IDLER ADJ SCREW	1				
2	WSH-0018	WASHER	1				
3	191774 01	PLATE	1				
4	NUT-0269	NUT	1				
5	191040 01	SPACER	1				
6	131014 01	SPROCKET IDLER	1				
7	BRG-1995	BEARING	1				
8	CIR-0470	CIRCLIP	1				
9	190060 06	IDLER SPINDLE	1				
10	192258 01	PAN DRIVE SPROCKET 25T	1				
11							
12	K0807035	KEY	1				
13	CIR-1125	CIRCLIP	1				
14	BRG-1994	BEARING	2				
15	192263 01	PAN DRIVE SHAFT	1				
16	BSHZ02553	LOCKING BUSH	1				
17	192265 01	PITMAN	1				
18	BRG-22500	BEARING	2				
19	HSS-0086	SETSCREW	6				
20	WSH-0009	FLAT WASHER	6				
21	NUT-0260	NUT	6				
22	HSS-0318	SETSCREW	1				
23	WSH-0070	SPRING WASHER	1				
24	BLT-2316	BOLT	1				
25	WSH-0024	FLAT WASHER	1				
26	NUT-0271	NUT	1				
27	192344 01	SPACER	1				
28	CHN-01682	CHAIN + JOINER	1				
28a	CHN-01600	CHAIN JOINER LINK	1				





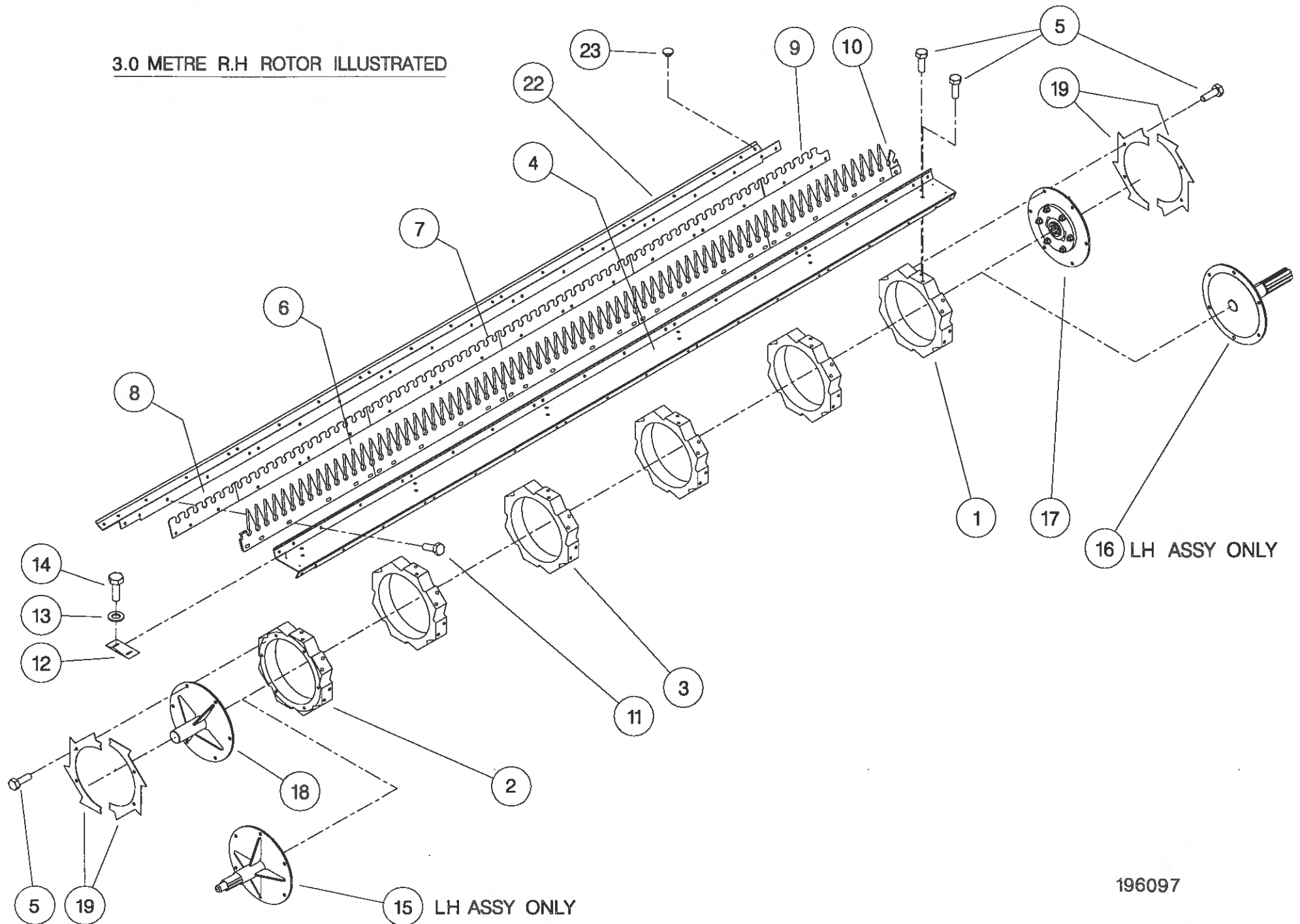
**Shelbourne Reynolds Engineering Limited**

ASSY NUMBER: 196097 10				ASSY DESCRIPTION:STRIPPING ROTOR ASSY (R/H) 3.0m			
ITEM	PART NO	DESCRIPTION	QTY	ITEM	PART NO	DESCRIPTION	QTY
1	192892 01	OUTER HUB CASTING L.H.	1				
2	192892 02	OUTER HUB CASTING R.H.	1				
3	192892 03	INNER HUB CASTING	4				
4	192890 02	ROTOR SECTION 3.0M	7				
5	HSSG10204	SET SCREW	108				
6	191968 02	ELITE ELEMENT	40				
OR	193087 01	ELITE ELEMENT(SLOTTED)	40				
7	192291 01	ANTI WEAR STRIP CTR.	32				
OR	192291 07	S-TYPE STRIP CTR	32				
8	192291 02	ANTI WEAR STRIP END	8				
OR	192291 08	S-TYPE STRIP END	8				
9	192291 03	ANTI WEAR STRIP CTR END	8				
OR	192291 09	S-TYPE STRIP CTR END	8				
10	191865 02	CENTRE FINGER RH (RICE)	8				
OR	194109 02	CENTRE FINGER RH (CEREALS)	8				
11	HSSF08174	SET SCREW	176				
12	192679 01	ANTI WRAP PLATE	8				
13	WSH-1034	PENNY WASHER	16				
14	SCW-5180	SELF TAP.SCREW	16				
15							
16							
17	KIT-00976	BALL COUPLING KIT	1				
18	192899 01	IDLE SHAFT W/ASSY	1				
19	192959 01	OUTER CLAMP RING (HALF)	4				
20							
21							
22	193117 02	ROTOR SECTION 3.0M (HOLE)	1				
23	BPG-0020	BODY PLUG	1				

**Shelbourne Reynolds Engineering Limited**

ASSY NUMBER: 196097 11				ASSY DESCRIPTION:STRIPPING ROTOR ASSY (L/H) 3.0m			
ITEM	PART NO	DESCRIPTION	QTY	ITEM	PART NO	DESCRIPTION	QTY
1	192892 01	OUTER HUB CASTING L.H.	1				
2	192892 02	OUTER HUB CASTING R.H.	1				
3	192892 03	INNER HUB CASTING	4				
4	192890 02	ROTOR SECTION 3.0M	8				
5	HSSG10204	SET SCREW	108				
6	191968 02	ELITE ELEMENT	40				
OR	193087 01	ELITE ELEMENT (SLOTTED)	40				
7	192291 01	ANTI WEAR STRIP CTR.	32				
OR	192291 07	S-TYPE STRIP CTR	32				
8	192291 02	ANTI WEAR STRIP END	8				
OR	192291 08	S-TYPE STRIP END	8				
9	192291 03	ANTI WEAR STRIP CTR END	8				
OR	192291 09	S-TYPE STRIP CTR END	8				
10	191865 01	CENTRE FINGER LH (RICE)	8				
OR	194109 01	CENTRE FINGER LH (CEREALS)	8				
11	HSSF08174	SET SCREW	176				
12	192679 01	ANTI WRAP PLATE	8				
13	WSH-1034	PENNY WASHER	16				
14	SCW-5180	SELF TAP.SCREW	16				
15	193103 01	CENTRE SHAFT W/ASSY	1				
16	192897 01	DRIVE SHAFT W/ASSY	1				
17							
18							
19	192959 01	OUTER CLAMP RING (HALF)	4				
20							
21							

# 3.0 METRE R.H ROTOR ILLUSTRATED



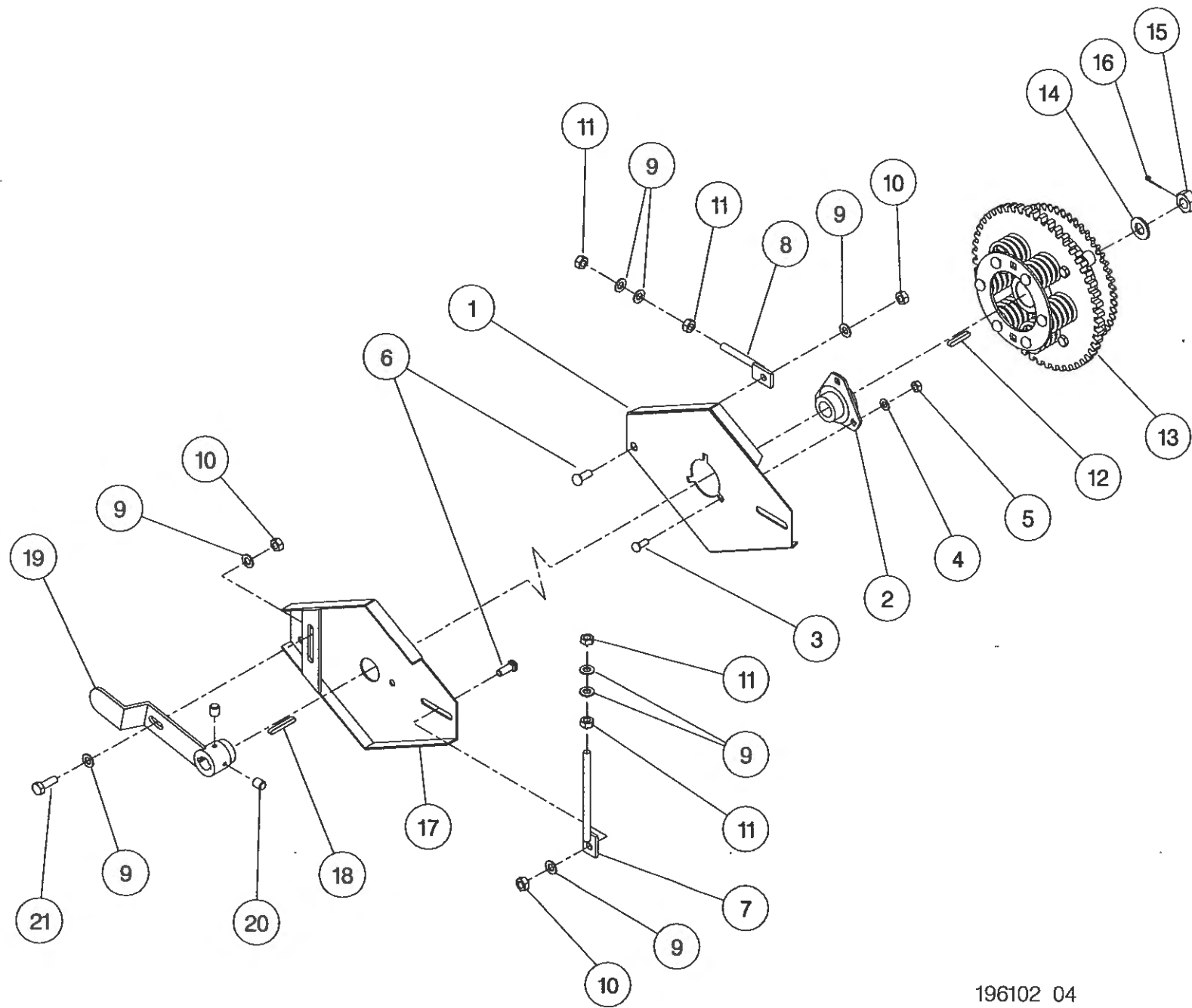
196097

**Shelbourne Reynolds Engineering Limited**

ASSY NUMBER: 196102 04      ASSY DESCRIPTION: AUGER MOUNTING/DRIVE KIT (RX) 1996

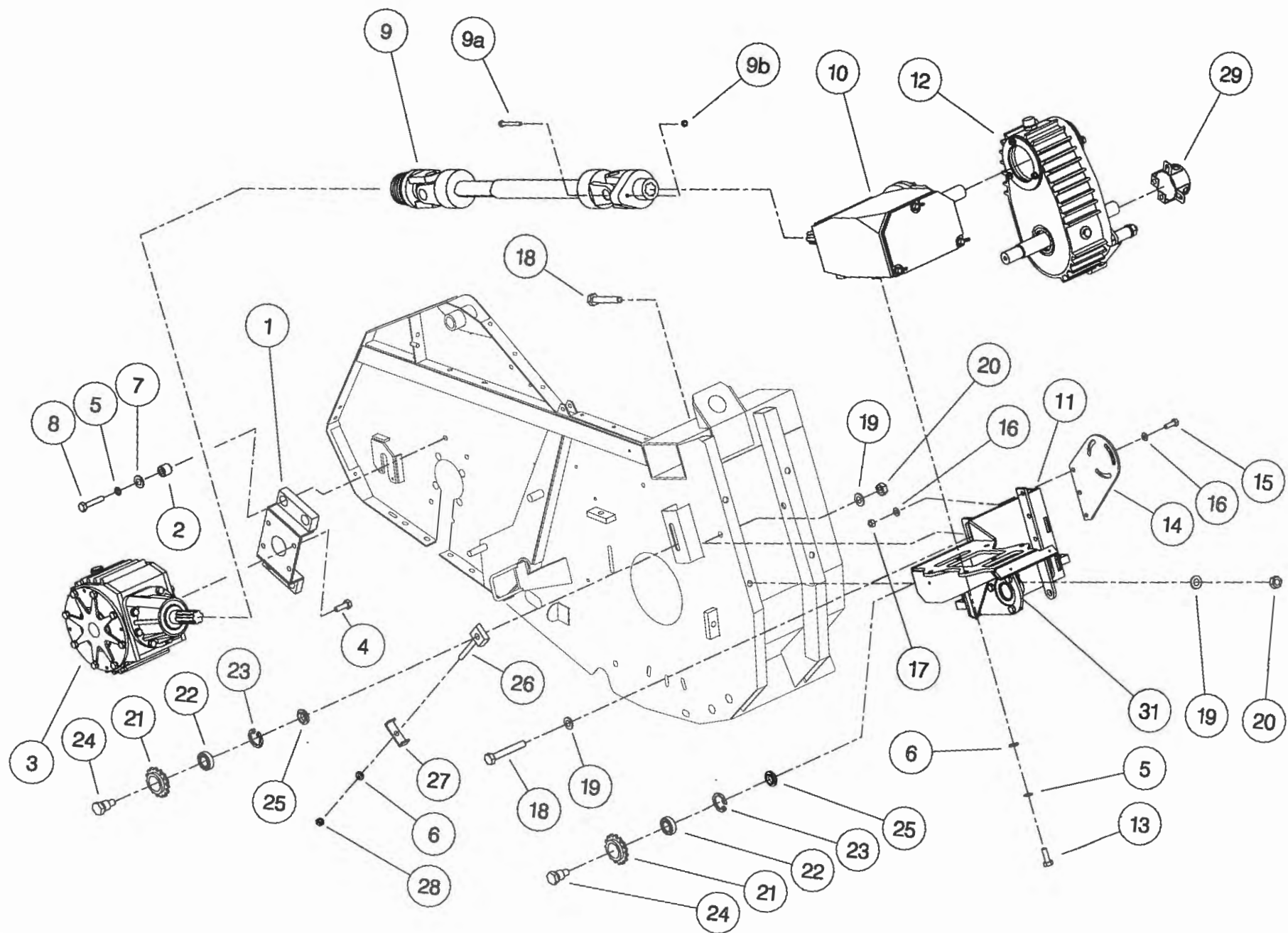
ITEM	PART NO	DESCRIPTION	QTY	ITEM	PART NO	DESCRIPTION	QTY
1	200035 03	SUPPORT PLATE L.H.	1				
2	BRG-0240	BEARING	1				
3	BLT-3745	COACH BOLT	3				
4	WSH-0015	PLAIN WASHER	3				
5	NUT-0265	NYLOC NUT	3				
6	BLT-3790	COACH BOLT	4				
7	192636 06	VERTICAL ADJUSTER	2				
8	192636 01	HORIZONTAL ADJUSTER	2				
9	WSH-0018	PLAIN WASHER	14				
10	NUT-0269	NYLOC NUT	5				
11	NUT-0170	PLAIN NUT	8				
12	K0807050	KEY	1				
13	KIT-00115	AUGER SLIP CLUTCH (SEE PARTS LIST KIT-00115)	1				
14	WSH-0030	PLAIN WASHER	1				
15	NUT-0580	CASTLE NUT	1				
16	PIN-1150	SPLIT PIN	1				
17	200038 01	SUPPORT PLATE R.H.	1				
18	K0807060	KEY	1				
19	200120 03	ADJUSTER ASSY	1				
20	SCW-4535	GRUB SCREW	2				
21	HSS-0241	SET SCREW	1				





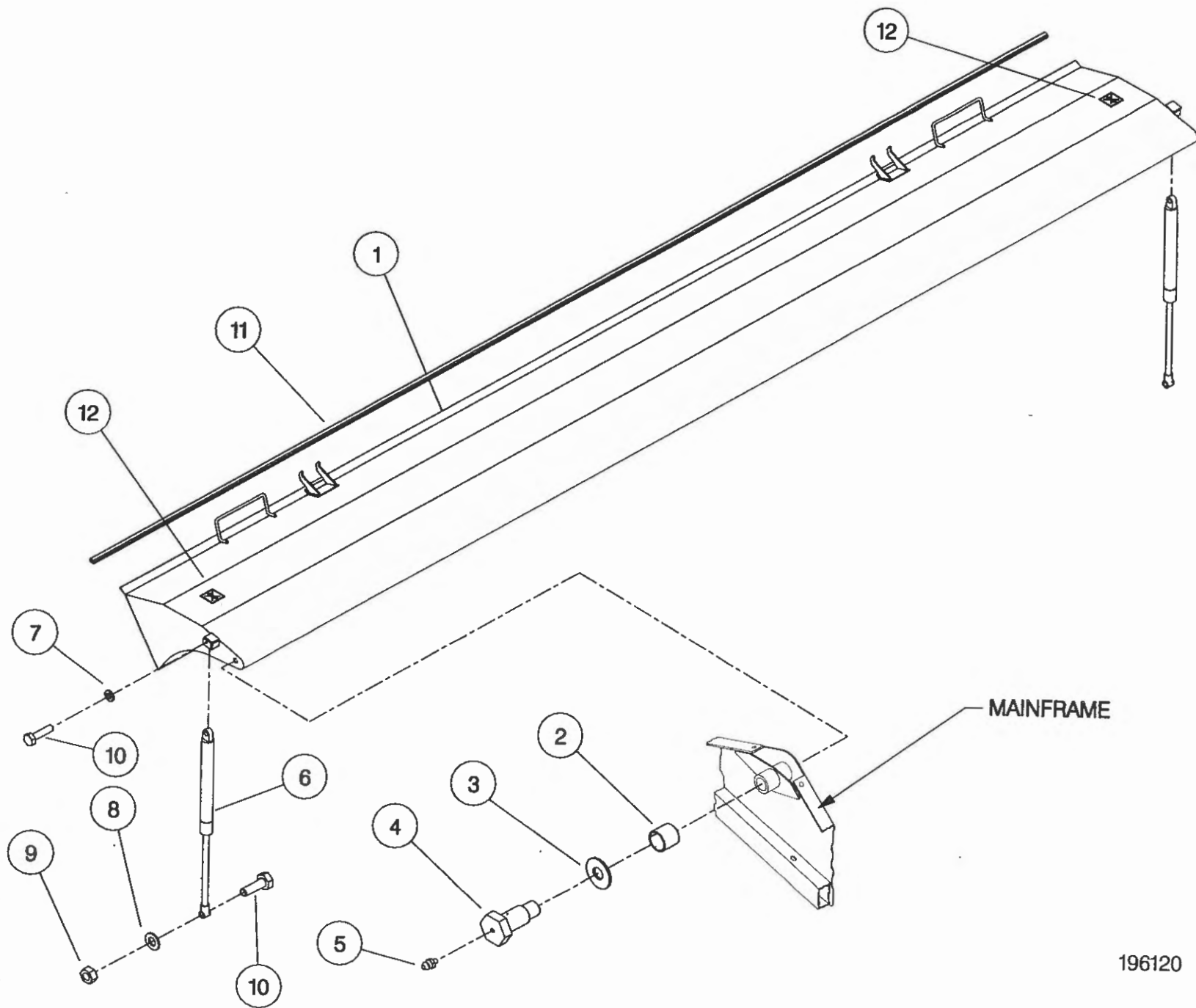
**Shelbourne Reynolds Engineering Limited**

ASSY NUMBER: 196119 01				ASSY DESCRIPTION: ROTOR/AUGER DRIVE 1997 (5.4 - 6.6M)			
ITEM	PART NO	DESCRIPTION	QTY	ITEM	PART NO	DESCRIPTION	QTY
1	191652 01	GEARBOX BRACKET	1	29	KIT-00525	PTO GUARD KIT	1
2	BSH-1530	BUSH	4	30			
3	GEA-0095	BEVEL GEARBOX (SEE PARTS LIST GEA-0095)	1	31	KIT-01219	INPUT SHAFT SUPPORT KIT	1
4	HSSG12174	SET SCREW	4				
5	WSH-0065	SPRING WASHER	10				
6	WSH-0018	PLAIN WASHER	8				
7	190119 04	PLAIN WASHER	4				
8	BLTA12290	BOLT	4				
9	PTO-09010	POWER SHAFT	1				
9a	BLT-2158	SHEAR BOLT					
9b	NUT-0164	NUT					
10	GEA-0135	FIVE SPEED GEARBOX ASSY (SEE PARTS LIST GEA-0135)	1				
11	192091 01	GEARBOX BRACKET (ALUM./FINS)	1				
12	GEA-0101	DROPBOX ASSY (SEE PARTS LIST GEA-0101)	1				
13	HSS-0238	SET SCREW	6				
14	191680 01	DROP BOX SUPPORT PLATE	1				
15	HSS-0194	SET SCREW	3				
16	WSH-0015	PLAIN WASHER	6				
17	NUT-0265	NYLOC NUT	3				
18	BLT-2316	BOLT	4				
19	WSH-0024	PLAIN WASHER	6				
20	NUT-0271	NYLOC NUT	4				
21	131041 01	SPROCKET IDLER (3/4" PITCH)	2				
22	BRG-1995	BEARING	2				
23	CIR-0470	CIRCLIP	2				
24	190060 06	IDLER SPINDLE	2				
25	191040 01	IDLER SPACER	2				
26	191777 01	IDLER ADJ SCREW	1				
27	191774 01	PLATE	1				
28	NUT-0269	NUT	1				



**Shelbourne Reynolds Engineering Limited**

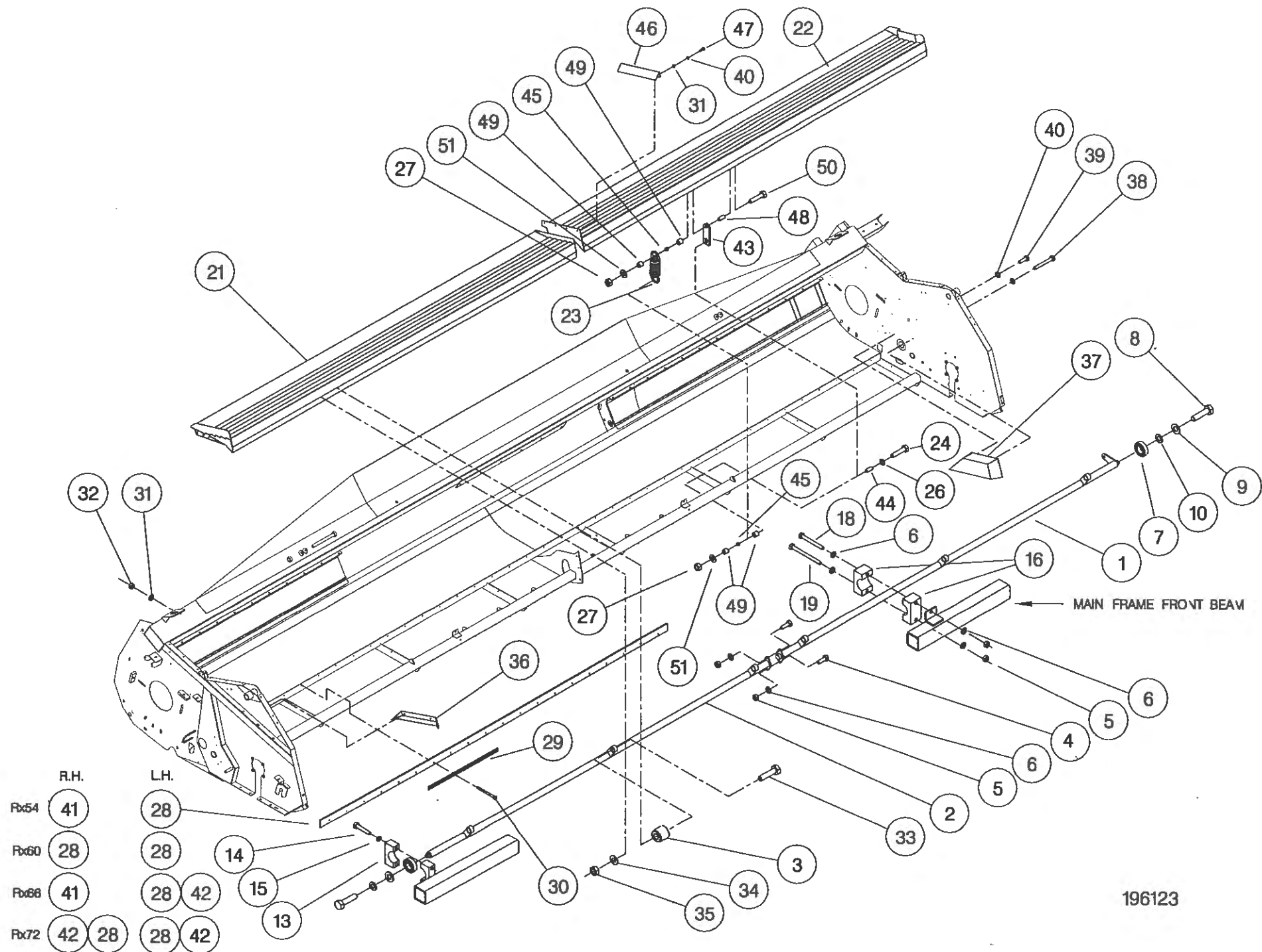
ASSY NUMBER: 196120 10				ASSY DESCRIPTION: TOP DOOR COWL ASSY (RX60) 1997			
ITEM	PART NO	DESCRIPTION	QTY	ITEM	PART NO	DESCRIPTION	QTY
1	193287 01	COWL ASSY (RX60)	1				
2	BSH-3030	BUSH	2				
3	192813 01	LARGE WASHER	2				
4	192812 01	COWL PIN	2				
5	NIP-0001	GREASE ZERK	2				
6	GSTA14405	GAS STRUTT	2				
7	WSH-0061	WASHER	2				
8	WSH-0015	WASHER	2				
9	NUT-0265	NUT	2				
10	BLTA10290	BOLT	4				
11	EDS-11600	SEAL STRIP	6.0m				
12	192718 01	TRANSFER (NO STEP)	2				



196120

**Shelbourne Reynolds Engineering Limited**

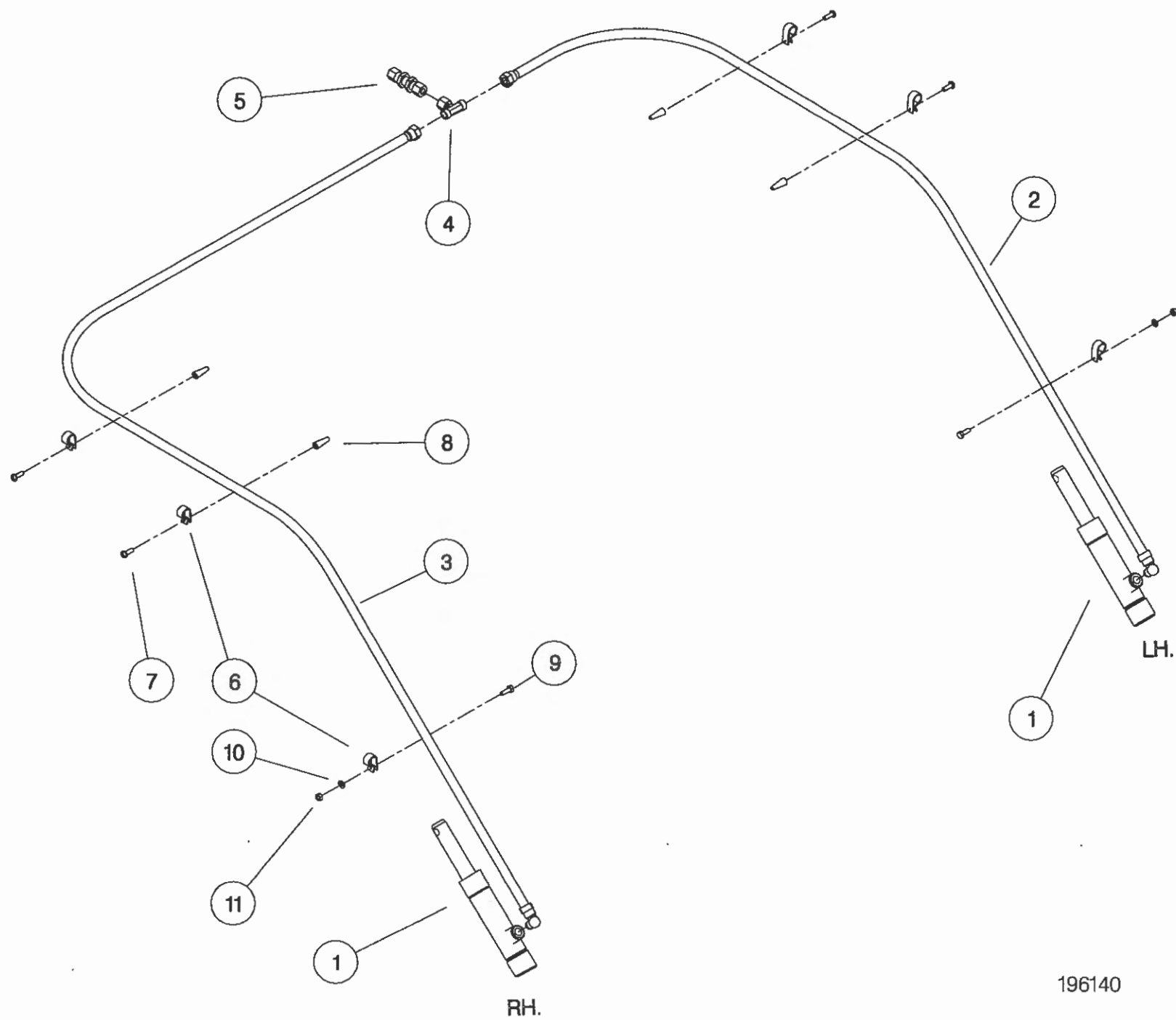
ASSY NUMBER: 196123 10				ASSY DESCRIPTION: SHAKER PAN SUB (RX60 - 1997)			
ITEM	PART NO	DESCRIPTION	QTY	ITEM	PART NO	DESCRIPTION	QTY
1	192287 01	TORSION TUBE L.H (3.0M)	1	38	BLT-2090	BOLT	2
2	192289 01	TORSION TUBE R.H (3.0M)	1	39	HSS-0084	SET SCREW	2
3	BSH-1530	RUBBER BUSH INSERT	6	40	WSH-0056	SPRING WASHER	8
				41			
4	HSS-0191	SETSCREW	2	42			
5	NUT-0265	NYLOC NUT	10	43	192969 01	RETAINER	6
6	WSH-0015	FLAT WASHER	14	44	192970 01	TUBE	6
7	BRG-1995	BEARING	2	45	PSP-01201	PLASTIC SPACER	12
8	HSS-0315	SET SCREW	2	46	193293 01	COVER PLATE	1
9	WSH-0070	SPRING WASHER	2	47	HSS-0084	SET SCREW	4
10	WSH-0024	PLAIN WASHER	2	48	192970 02	TUBE	6
11				49	PSP-01800	PLASTIC SPACER	24
12				50	BLTA08530	BOLT	6
13	192264 02	CLAMP BLOCK TOP	2	51	WSH-1038	PENNY WASHER	12
14	BLT-2197	BOLT	4				
15	WSH-0061	SPRING WASHER	4				
16	192266 01	PIVOT BLOCK (PAIR)	4				
17							
18	BLT-2209	BOLT	4				
19	HSSA10680	SETSCREW	4				
20							
21	193312 01	SHAKER PAN ASSY R.H (3.0M)	1				
22	193311 01	SHAKER PAN ASSY L.H (3.0M)	1				
23	SPGA32221	SPRING	6				
24	BLTA08500	BOLT	6				
25							
26	WSH-0012	WASHER	12				
27	NUT-0263	NUT	12				
28	192274 01	SEAL STRIP	2				
29	192273 01	CLAMP STRIP	10				
30	BLT-2110	BOLT	40				
31	WSH-0009	FLAT WASHER	44				
32	NUT-0260	NYLOC NUT	40				
33	HSS-0265	SET SCREW	6				
34	WSH-0018	PLAIN WASHER	6				
35	NUT-0269	NYLOC NUT	6				
36	192355 01	END DEFLECTOR R.H.	1				
37	192354 01	END DEFLECTOR L.H.	1				



Shelbourne Reynolds Engineering Limited

ASSY NUMBER: 196140 10				ASSY DESCRIPTION: HYDRAULIC CIRCUIT SUB 6.0M			
ITEM	PART NO	DESCRIPTION	QTY	ITEM	PART NO	DESCRIPTION	QTY
1	REF	HYDRAULIC RAM	2				
2	HHBC28610	HYDRAULIC HOSE LH	1				
3	HHBC53610	HYDRAULIC HOSE RH	1				
4	HPPD07100	HYD.TEE FITTING	1				
5	FIT-0213	HYD.BULKHEAD FITT.	1				
6	CLP-01012	P CLIP	6				
7	SCW-5180	SELF TAP SCREW	4				
8	PFS-00500	PANEL FASTENER	4				
9	HSS-0086	SETSCREW	2				
10	WSH-0009	PLAIN WASHER	2				
11	NUT-0260	NYLOC NUT	2				

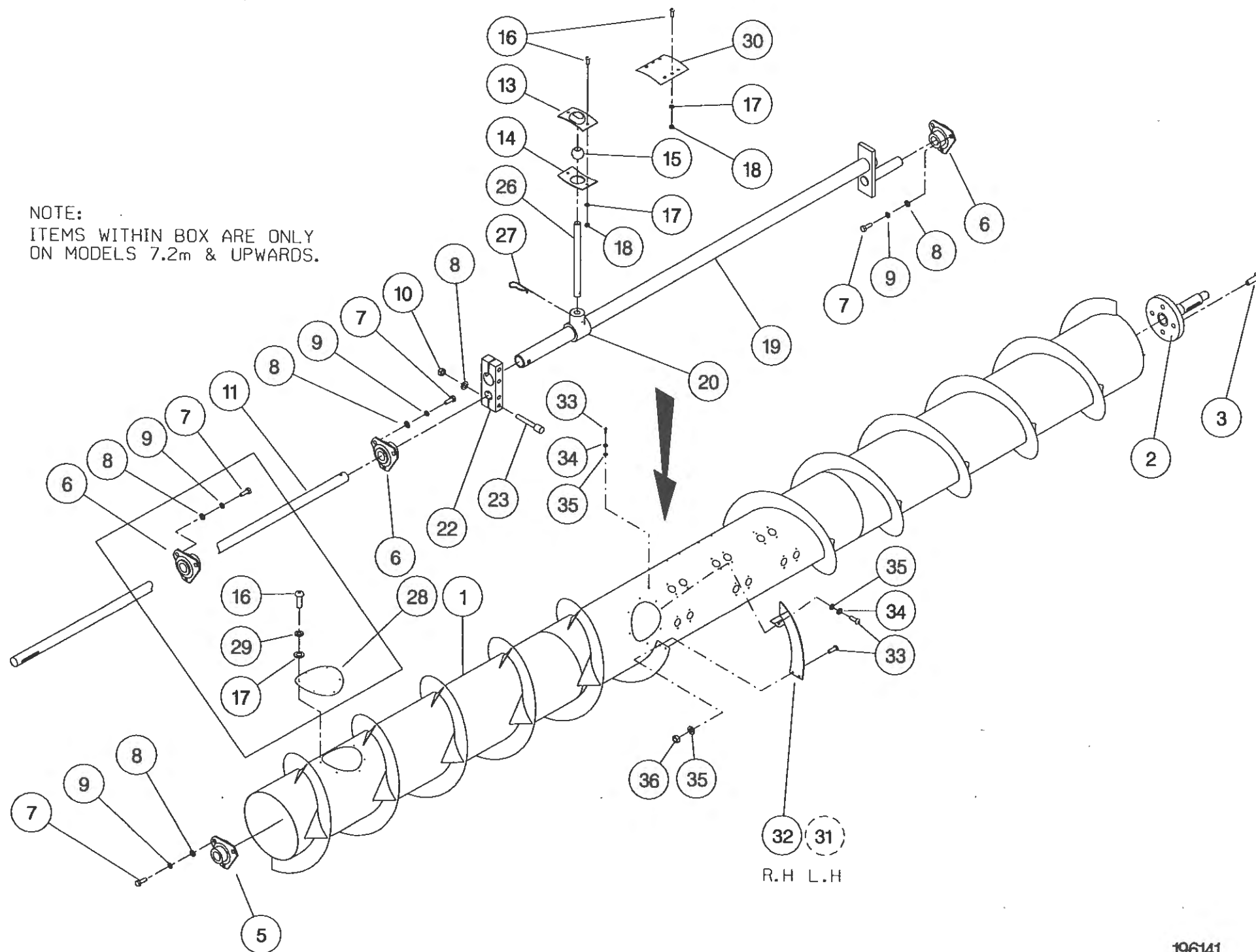




**Shelbourne Reynolds Engineering Limited**

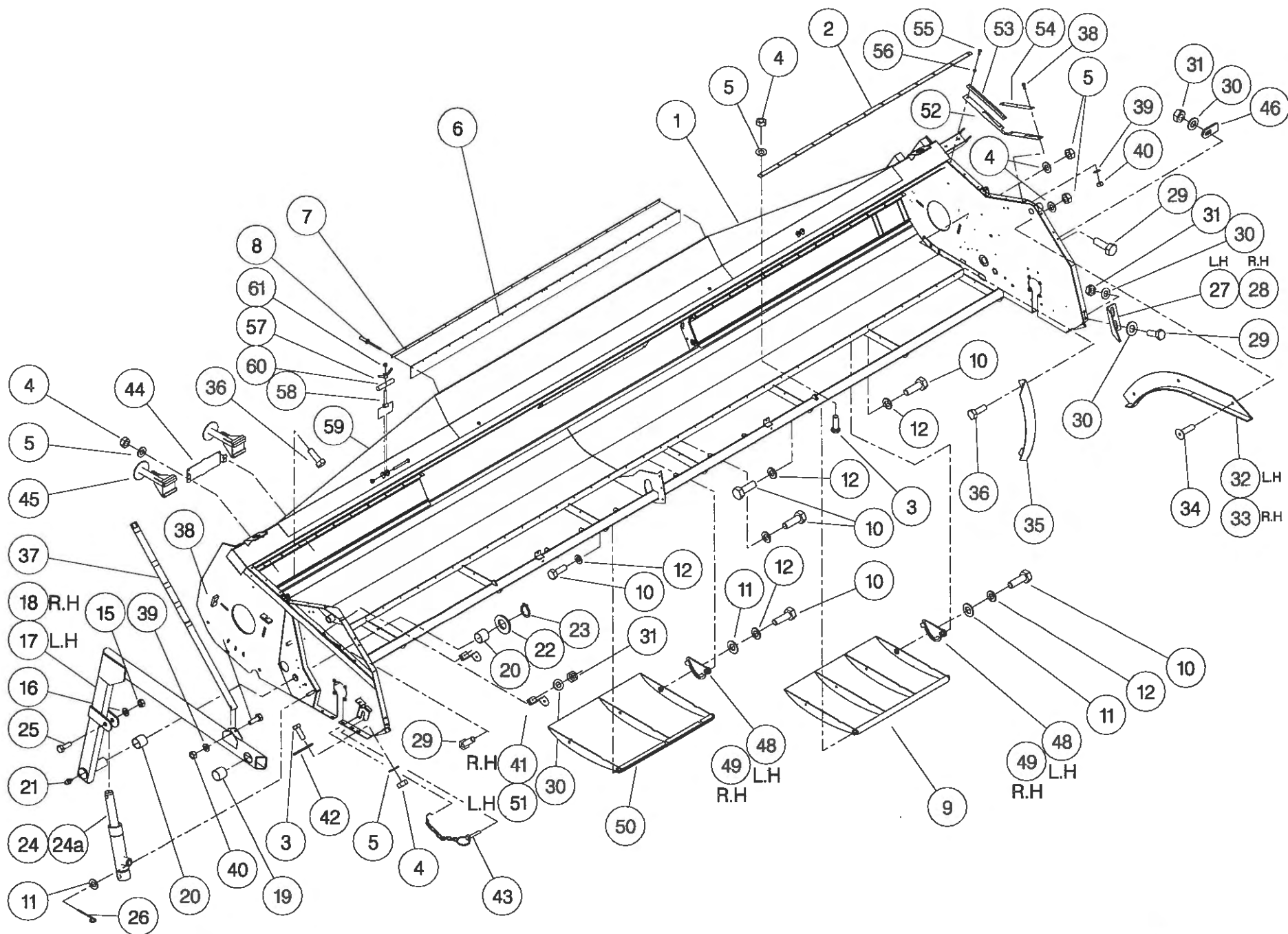
ASSY NUMBER: 196141 10				ASSY DESCRIPTION: AUGER ASSY 6.0M (1998)			
ITEM	PART NO	DESCRIPTION	QTY	ITEM	PART NO	DESCRIPTION	QTY
1	193451 01	AUGER W.ASSY.	1	OR		(24 FINGERS OPTION)	24
2	192011 01	AUGER DRIVE SHAFT	1	27	AUG-03000	HAIRPIN COTTER	
3	HSSF12204	SET SCREW	4			(16 FINGERS OPTION)	16
4				OR		(20 FINGERS OPTION)	20
5	BRG-2020	BEARING	1	OR		(24 FINGERS OPTION)	24
6	BRG-0240	BEARING	2	28	193203 01	COVER PLATE	2
7	HSS-0191	SET SCREW	9	29	WSH-0056	SPRING WASHER	12
8	WSH-0015	PLAIN WASHER	13	30	190735 01	BLANKING PLATE	
9	WSH-0061	SPRING WASHER	9			(16 FINGERS OPTION)	8
10	NUT-0265	NYLOC NUT	4	OR		(20 FINGERS OPTION)	4
11	192363 05	AUGER SHAFT	1	OR		(24 FINGERS OPTION)	0
12				31	192227 01	AUGER FLIGHT EXTENSION LH	1
13	AUG-01000	UPPER FINGER PL. (CONCAVE)		32	192227 02	AUGER FLIGHT EXTENSION RH	1
		(16 FINGERS OPTION)	16	33	SCBA08172	BUT. SCKT HD SCREW	8
OR		(20 FINGERS OPTION)	20	34	WSH-0058	WASHER	4
OR		(24 FINGERS OPTION)	24	35	WSH-0012	WASHER	8
14	AUG-01500	LOWER FINGER PL. (CONVEX)		36	NUT-0263	NUT	4
		(16 FINGERS OPTION)	16				
OR		(20 FINGERS OPTION)	20				
OR		(24 FINGERS OPTION)	24				
15	AUG-02000	FINGER GUIDE (BALL)					
		(16 FINGERS OPTION)	16				
OR		(20 FINGERS OPTION)	20				
OR		(24 FINGERS OPTION)	24				
16	SCW-4960	BUTT.HD.SKT.SCREW	48				
17	WSH-0009	PLAIN WASHER	60				
18	NUT-0260	NYLOC NUT	48				
19	192368 01	AUGER CRANK	1				
20	AUG-02500	FINGER HOLDER	24				
21	SCW-4959	BUTT.HD.SKT.SCREW	12				
22	192364 01	AUGER CLAMP	1				
23	SCCA10412	CAP HD SKT SCREW	4				
24							
25							
26	192310 01	FINGER (16mm DIA. CEREALS)					
26	192310 02	FINGER (16mm DIA. RICE)					
		(16 FINGERS OPTION)	16				
OR		(20 FINGERS OPTION)	20				

NOTE:  
ITEMS WITHIN BOX ARE ONLY  
ON MODELS 7.2m & UPWARDS.



**Shelbourne Reynolds Engineering Limited**

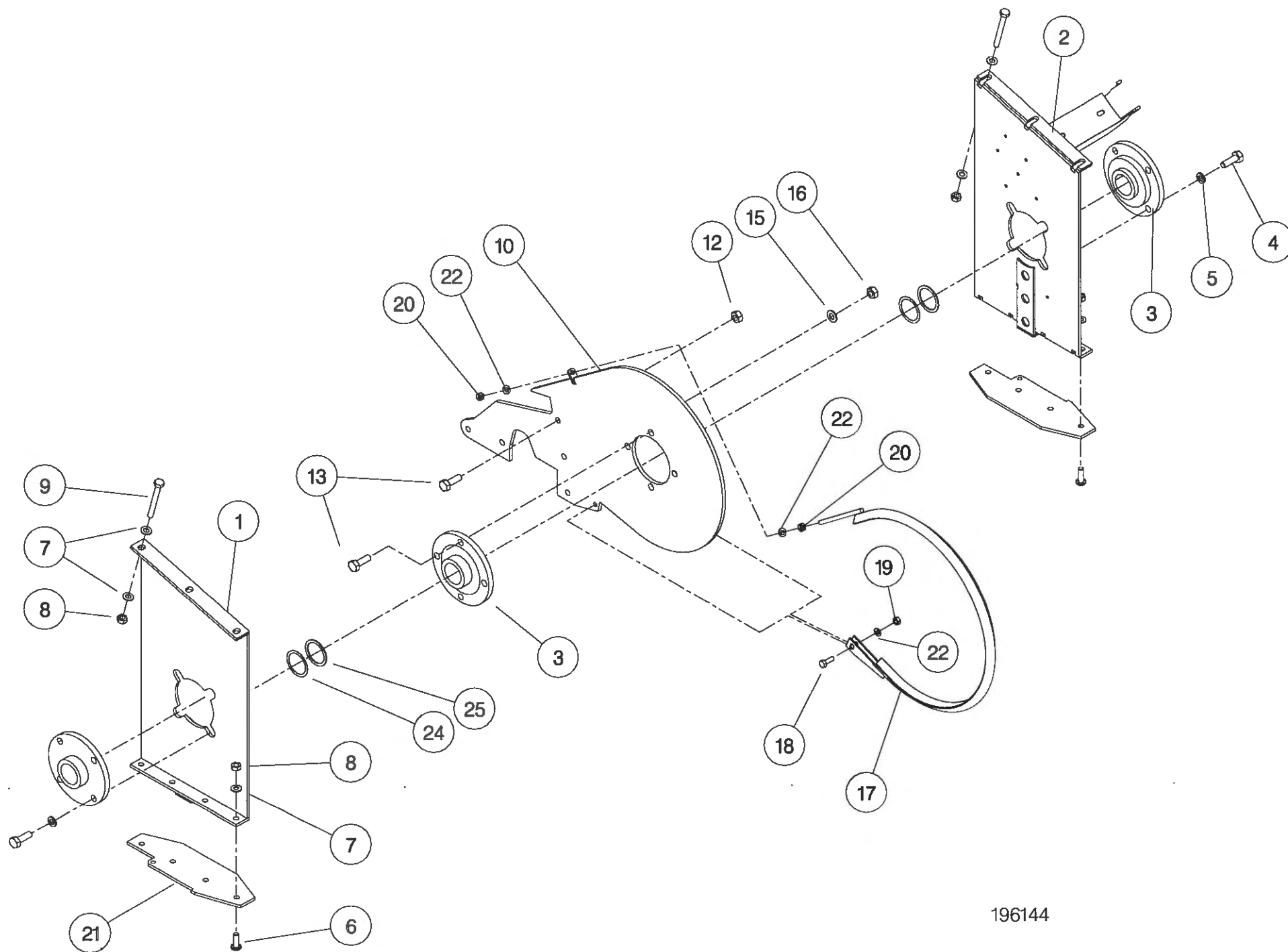
ASSY NUMBER: 196142 30				ASSY DESCRIPTION: FRAME & PARTS SUB (RX60-1999)			
ITEM	PART NO	DESCRIPTION	QTY	ITEM	PART NO	DESCRIPTION	QTY
1	194057 01	RX60 MAIN FRAME ASSY (ST.ST)	1	38	HSS-0092	SETSCREW	1
2	191034 12	STRIPPER PLATE	2	39	WSH-0009	PLAIN WASHER	7
3	BLT-4710	COACH BOLT	28	40	NUT-0260	NYLOC NUT	7
4	NUT-0263	NUT	40	41	193480 01	SUPPORT BRACKET	1
5	WSH-0012	WASHER	40	42	192543 01	CROP DIVIDER ADJ.PLATE	2
6	191340 01	RUBBER SEAL	1	43	PIN-01790	LYNCH PIN & CHAIN	2
7	191339 01	CLAMP STRIP	2	44	193221 01	HEADER STAND BRACKET	1
8	POP-0006	POP RIVET	22	45	193222 01	HEADER FRONT STAND	2
9	193219 01	SKID	2	46	192550 01	NOSE ARM STOP PLATE	1
10	HSS-0316	SET SCREW	18	47			
11	WSH-0024	WASHER	8	48	192954 01	SKID ADJUSTER PLATE L.H	3
12	WSH-0070	WASHER	18	49	192954 02	SKID ADJUSTER PLATE R.H	3
13	NUT-0260	NUT	6	50	193218 01	SKID (CTR.)	1
14				51	193480 02	SUPPORT BRACKET LH	1
15	NUT-0269	NUT	4	52	193231 01	RUBBER SEAL	2
16	WSH-0018	WASHER	4	53	193229 01	SEAL CLAMP	2
17	191259 02	ADJ COWL SUPPORT ARM R.H	1	54	193230 01	SEAL CLAMP	2
18	191259 01	ADJ COWL SUPPORT ARM L.H	1	55	SCW-4960	BUTT.HD.SKT.SCREW	12
19	BSH-3030	BUSH	2	56	WSH-0056	SPRING WASHER	12
20	BSH-3070	BUSH	4	57	193244 01	RETAINING NUT	2
21	NIP-0001	GREASE ZERK	2	58	193248 01	RETAINING SCREW	2
22	WSH-1547	WASHER	2	59	BLTA12380	BOLT	2
23	CIR-1150	CIRCLIP	2	60	193251 01	RETAINING BAR	2
24	193506 01	HYDRAULIC RAM	2	61	NUT-0170	PLAIN NUT	2
24a	RMSK00030	SEAL KIT		62	193363 01	ROTOR DEFLECTOR	2
25	HSS-0260	SET SCREW	4	63	HSS-0084	SETSCREW	6
26	PIN-1150	SPLIT PIN	2	64			
27	192193 01	ADJ COWL STOP L.H	1				
28	192193 02	ADJ COWL STOP R.H	1				
29	HSS-0194	SET SCREW	7				
30	WSH-0015	WASHER	11				
31	NUT-0265	NUT	7				
32	192055 01	RUNNER ASSY L.H	1				
33	192055 02	RUNNER ASSY R.H	1				
34	SCW-1735	SCREW	6				
35	192304 01	AUGER END DEFLECTOR	2				
36	HSS-0140	SET SCREW	6				
37	192494 01	INDICATOR ROD	1				



**Shelbourne Reynolds Engineering Limited**

ASSY NUMBER: 196144 01      ASSY DESCRIPTION: RX ROTOR MTG SUB (1998)

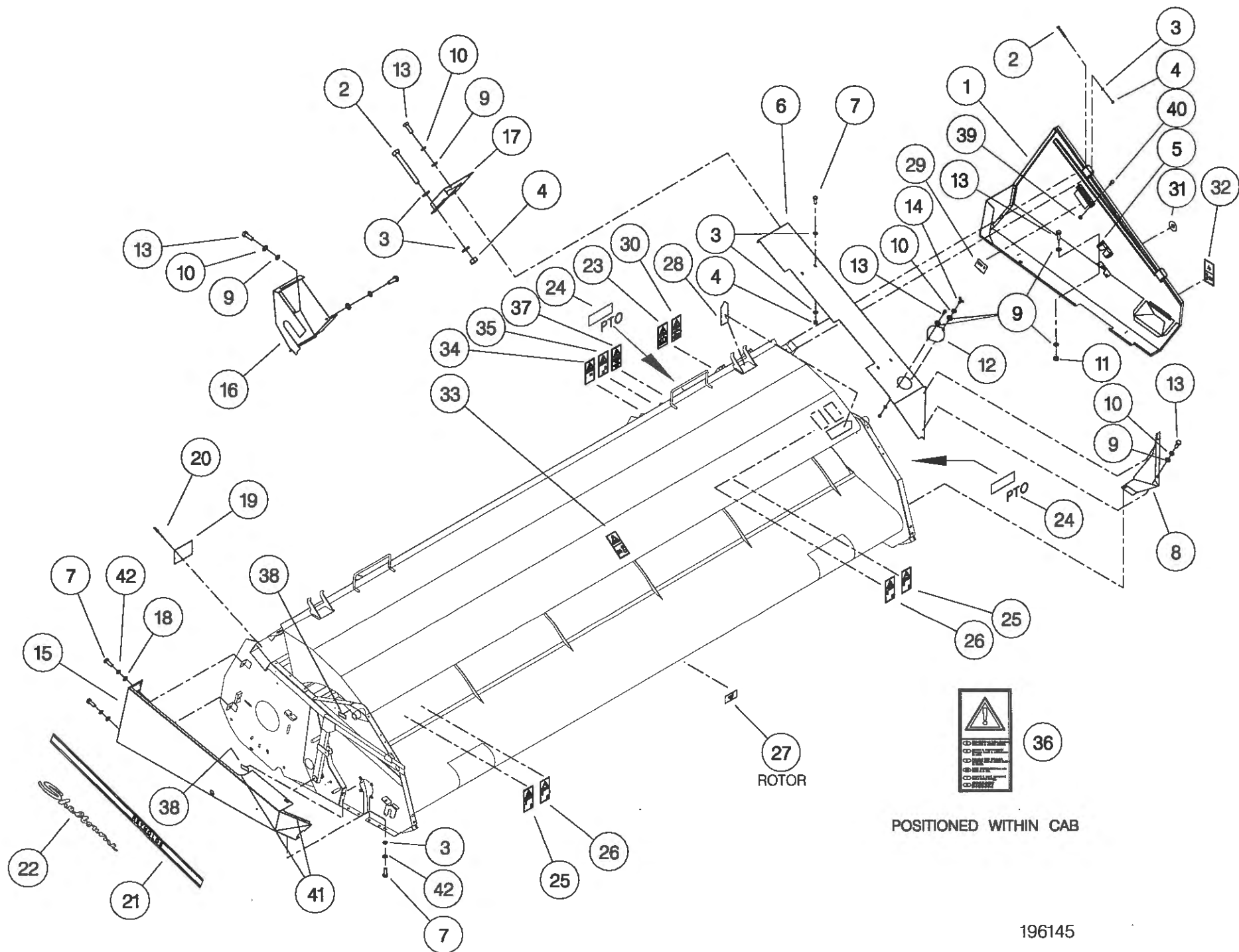
ITEM	PART NO	DESCRIPTION	QTY	ITEM	PART NO	DESCRIPTION	QTY
1	193504 01	ROTOR MTG PLATE R.H	1				
2	193295 01	ROTOR MTG PLATE L.H	1				
3	BRG-3275	BEARING	3				
4	HSS-0235	SETSCREW	8				
5	WSH-0065	WASHER	8				
6	SCW-0515	SCREW	8				
7	WSH-0015	WASHER	20				
8	NUT-0265	NUT	14				
9	BLTA10520	BOLT	6				
10	193291 01	DIVISION PLATE	1				
11							
12	NUTA07120	AERO-TIGHT NUT	5				
13	HSS-0241	SETSCREW	9				
14							
15	WSH-0018	WASHER	4				
16	NUT-0269	NUT	4				
17	192502 01	VEE STRIP ASSY	1				
18	HSS-0140	BOLT	1				
19	NUT-0263	NYLOC NUT	1				
20	NUT-0164	NUT PLAIN	2				
21	193220 01	DIVIDING PLATE	2				
22	WSH-0012	WASHER	3				
23							
24	192876 01	SHIM (1mm THICK)					
25	192876 02	SHIM (2mm THICK)					



**Shelbourne Reynolds Engineering Limited**

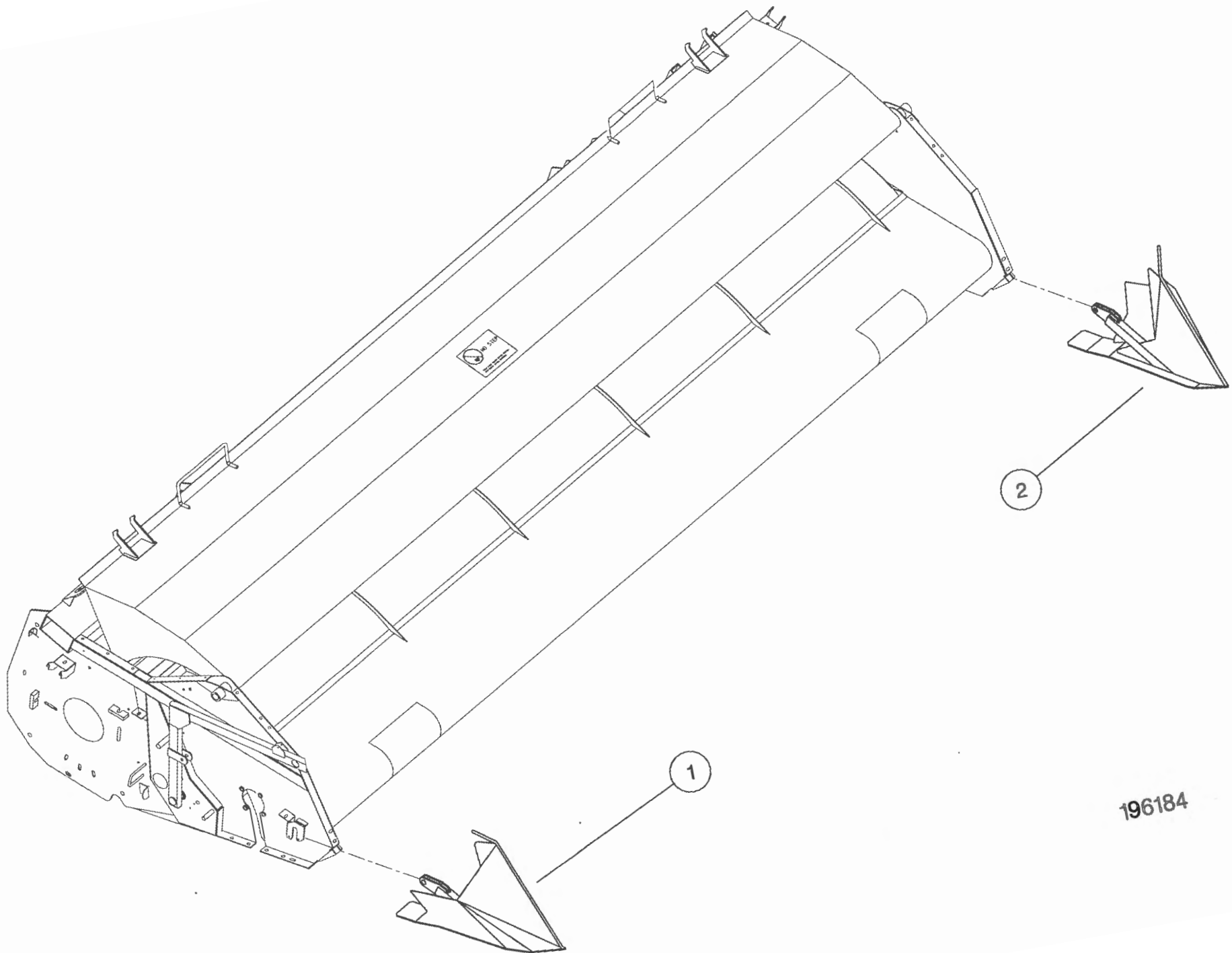
ASSY NUMBER: 196145 01				ASSY DESCRIPTION: RX EMBLEMS AND GUARDS SUB (1998)			
ITEM	PART NO	DESCRIPTION	QTY	ITEM	PART NO	DESCRIPTION	QTY
1	193299 01	L.H.GUARD	1	39	NUT-0164	NUT	10
2	BLTA08470	BOLT	3	40	BLTA08350	SHEARBOLT	10
3	WSH-0012	PLAIN WASHER	12	41	EDS-11400	EDGING STRIP	1.5
4	NUT-0263	NYLOC NUT	8	42	WSH-0058	WASHER	4
5	LTC-00040	SLAM LATCH	1				
6	193297 01	L.H. TOP COVER	1				
7	HSS-0140	SET SCREW	9				
8	192570 01	FRONT DEFLECTOR L.H.	1				
9	WSH-0009	PLAIN WASHER	10				
10	WSH-0056	SPRING WASHER	8				
11	NUT-0260	NYLOC NUT	3				
12	191355 01	COVER	1				
13	HSS-0084	SET SCREW	12				
14	SCW-4700	WING SCREW	1				
15	193478 01	R.H.GUARD	1				
16	192555 01	REAR DRIVE GUARD	1				
17	193009 01	REAR UPPER GUARD	1				
18	WSH-1038	PENNY WASHER	3				
19	191359 01	IDENTIFICATION PLATE	1				
20	POP-0006	POP RIVET	4				
21	191983 01	EMBLEM (STRIPES & REYNOLDS)	2				
22	191982 01	EMBLEM (SHELBOURNE)	2				
23	610257 01	EMBLEM (READ MANUAL)	1				
24	127075 12	EMBLEM (GREASE 10 HOURS)	2				
25	193388 01	EMBLEM (FLYING OBJECTS)	2				
26	193389 01	EMBLEM (KEEP AWAY)	2				
27	193395 01	EMBLEM (TENSILOCK)	4				
28	190702 04	EMBLEM (SLING POINT)	4				
29	192839 01	EMBLEM (SHEARBOLT PART No.)	1				
30	610250 01	EMBLEM (SAFETY MAINTENANCE)	1				
31	192953 01	EMBLEM (1/4 TURN)	1				
32	193392 01	EMBLEM (STOP ENG BEFORE...)	1				
33	193393 01	EMBLEM (STOP ENG BEFORE...)	1				
34	193390 01	EMBLEM (DONT HANG CHAIN)	1				
35	193391 01	EMBLEM (PTO GUARD)	1				
36	193394 01	EMBLEM (ENGAGE STRIP ROTOR)	1				
37	193387 01	EMBLEM (AUGER/ROTOR SPEED)	1				
38	127075 16	EMBLEM (GREASE 50 HOURS)	6				





**Shelbourne Reynolds Engineering Limited**

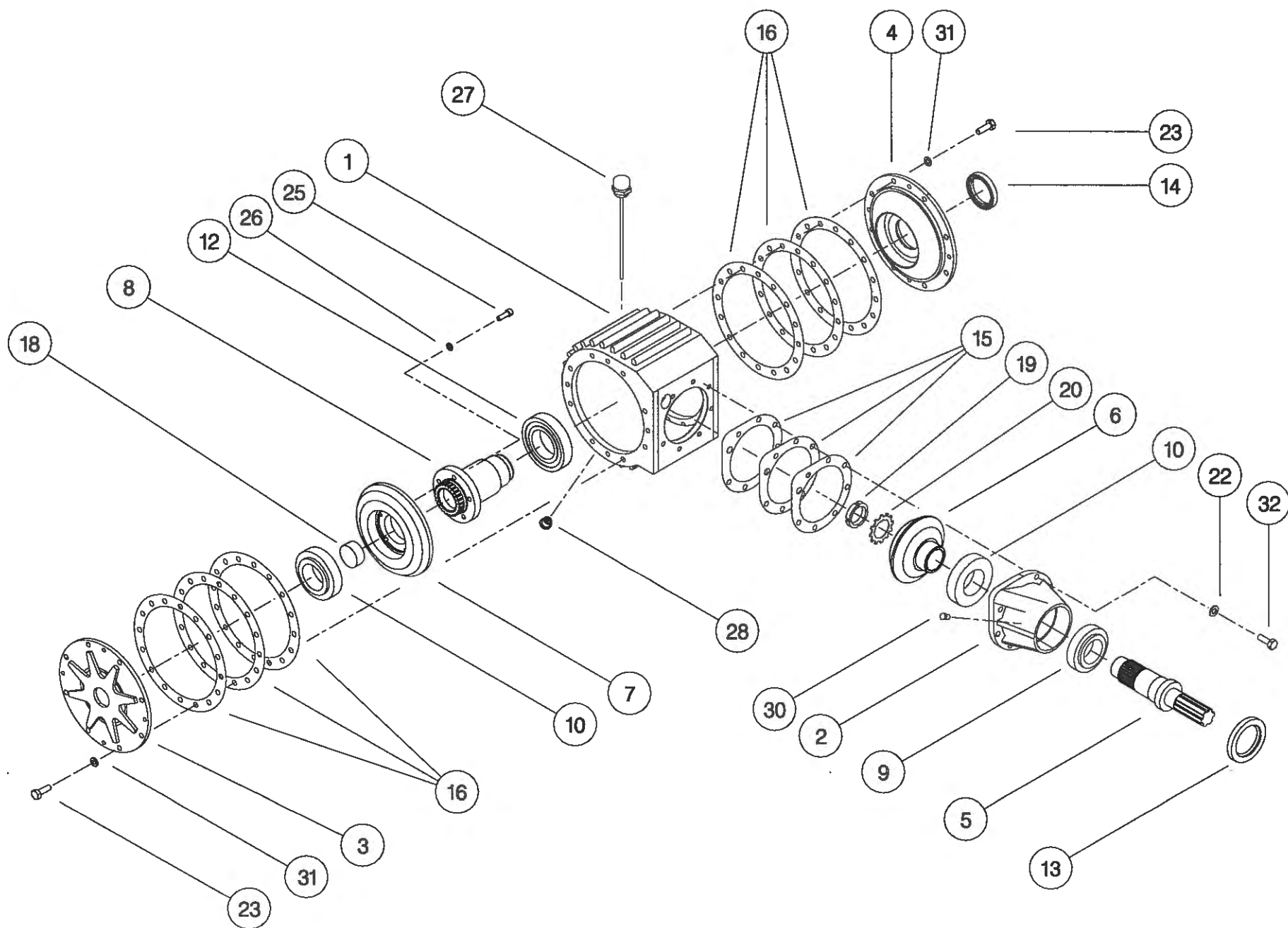
ASSY NUMBER: 196184 01				ASSY DESCRIPTION: SHORT DIVIDERS SUB (1999)			
ITEM	PART NO	DESCRIPTION	QTY	ITEM	PART NO	DESCRIPTION	QTY
1	194074 01	SHORT DIVIDER RH	1				
2	194075 01	SHORT DIVIDER LH	1				



196184

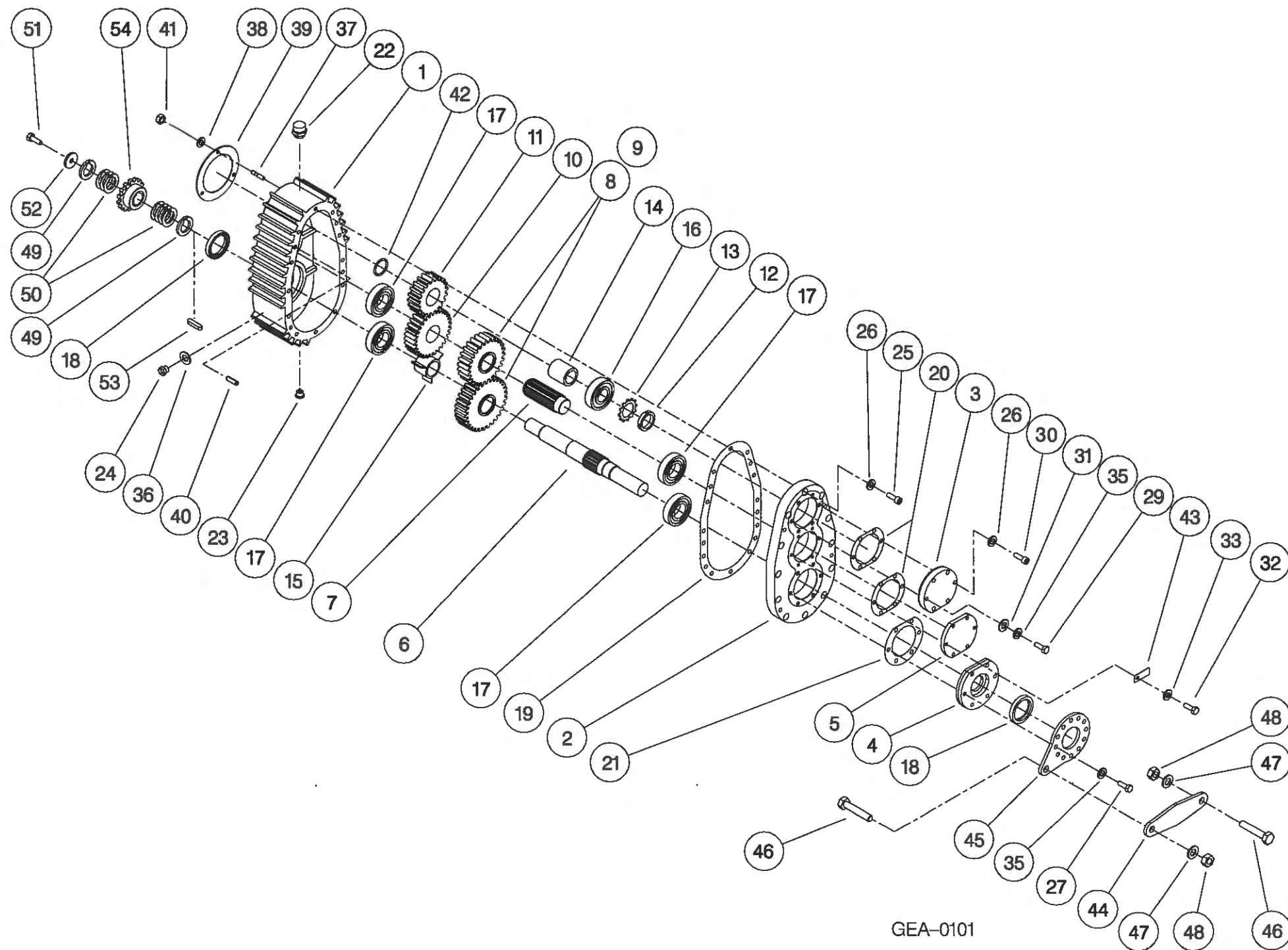
**Shelbourne Reynolds Engineering Limited**

ASSY NUMBER: GEA-0095				ASSY DESCRIPTION: BEVEL GEARBOX (1.5:1)			
ITEM	PART NO	DESCRIPTION	QTY	ITEM	PART NO	DESCRIPTION	QTY
1	191715 01	GEARBOX CASING	1				
2	191716 01	INPUT HOUSING	1				
3	191717 01	OUTSIDE END COVER	1				
4	191718 01	INSIDE END COVER	1				
5	191719 01	INPUT SHAFT (17T INVOLUTE)	1				
or	191819 01	INPUT SHAFT (28T INVOLUTE)	1				
6	191720 01	BEVEL GEAR 20T (17T INV)	1				
or	191798 01	BEVEL GEAR 20T (28T INV)	1				
7	191721 01	BEVEL GEAR 30T (26T INV)	1				
or	191799 01	BEVEL GEAR 30T (25T INV)	1				
8	191722 01	OUTPUT SHAFT (26T INVOLUTE)	1				
or	191800 01	OUTPUT SHAFT (25T INVOLUTE)	1				
9	BRG-7000	BEARING	1				
10	BRG-7020	BEARING	2				
11							
12	BRG-7040	BEARING	1				
13	SEA-0590	ROTARY SHAFT SEAL	1				
14	SEA-0600	ROTARY SHAFT SEAL	1				
15	191812	SHIM PACK (INPUT)	1				
16	191813	SHIM PACK (ENDS)	2				
17							
18	191735 01	SHAFT PLUG	1				
19	NUT-3010	LOCK RING	1				
20	WSH-6010	LOCK WASHER	1				
21							
22	WSH-1096	SHAKEPROOF WASHER	7				
23	HSS-1054	SET SCREW	23				
24							
25	SCW-0139	CAP HEAD SCREW	5				
26	WSH-0058	SPRING WASHER	5				
27	FIT-0254	BREATHING/DIP STICK	1				
28	FIT-0253	MAGNETIC DRAIN PLUG	1				
29							
30	FIT-0223	TAPER PLUG	1				
31	WSH-1145	SPRING WASHER	16				



**Shelbourne Reynolds Engineering Limited**

ASSY NUMBER: GEA-0101				ASSY DESCRIPTION: SHORT DROPBOX FOR RX & CX (1996)			
ITEM	PART NO	DESCRIPTION	QTY	ITEM	PART NO	DESCRIPTION	QTY
1	191723 01	GEARCASE	1	38	WSH-0012	PLAIN WASHER	5
2	191723 02	LID	1	39	191759 01	SEAL	1
3	191696 01	OUTPUT END CAP	1	40	191765 01	DOWL	2
4	191694 01	INPUT FLANGE	1	41	NUT-0263	NYLOC NUT	5
5	191693 01	END CAP	1	42	CIR-4000	SNAP RING CIRCLIP	1
6	191807 01	INPUT/AUGER OUTPUT SHAFT (28T INVOLUTE)	1	43	191928 01	IDENTIFICATION TAG	1
7	191801 01	INTERMED. SHAFT (28T INV)	1	44	193097 01	FIXED LINK	1
8	*	CHANGE GEAR (SEE DRIVE SUB)		45	191687 01	LINK BRACKET	1
9	*	CHANGE GEAR (SEE DRIVE SUB)		46	HSS-0316	SET SCREW	2
10	191803 01	SPUR GEAR 30T (28T INV)	1	47	WSH-0024	WASHER	2
11	191884 01	SPUR GEAR 20T (28T INV)	1	48	NUT-0271	NUT	2
12	NUT-3000	LOCK RING	1	49	191692 01	SPACER	2
13	WSH-6000	LOCK WASHER	1	50	191692 02	SHIM	7
14	191725 01	SPACER	1	51	HSSF10174	SET SCREW	1
15	191894 01	SPACER	1	52	190548 01	PLAIN WASHER	1
16	BRG-6600	BEARING	1	53	K1008045	KEY	1
17	BRG-5800	BEARING	4	54	*	AUGER SPROCKET (SEE DRIVE SUB)	
18	SEA-0610	ROTARY SHAFT SEAL	2				
19	191756 01	GASKET	1				
20	191757	SEAL PACK	2				
21	191758	SEAL PACK	1				
22	FIT-0255	BREATHER	1				
23	FIT-0253	MAGNETIC DRAIN PLUG1					
24	FITD00005	SIGHT GLASS/SEAL	1				
25	SCW-0196	CAP HEAD SCREW	12				
26	WSH-1301	SHAKEPROOF WASHER	15				
27	HSS-0202	SETSCREW	6				
28							
29	BLTA10290	BOLT	3				
30	SCW-0190	CAP HEAD SCREW	3				
31	WSH-0015	PLAIN WASHER	3				
32	HSS-0145	SET SCREW	6				
33	WSH-1300	SHAKEPROOF WASHER	6				
34							
35	WSH-0061	SPRING WASHER	9				
36							
37	191737 01	STUD	5				

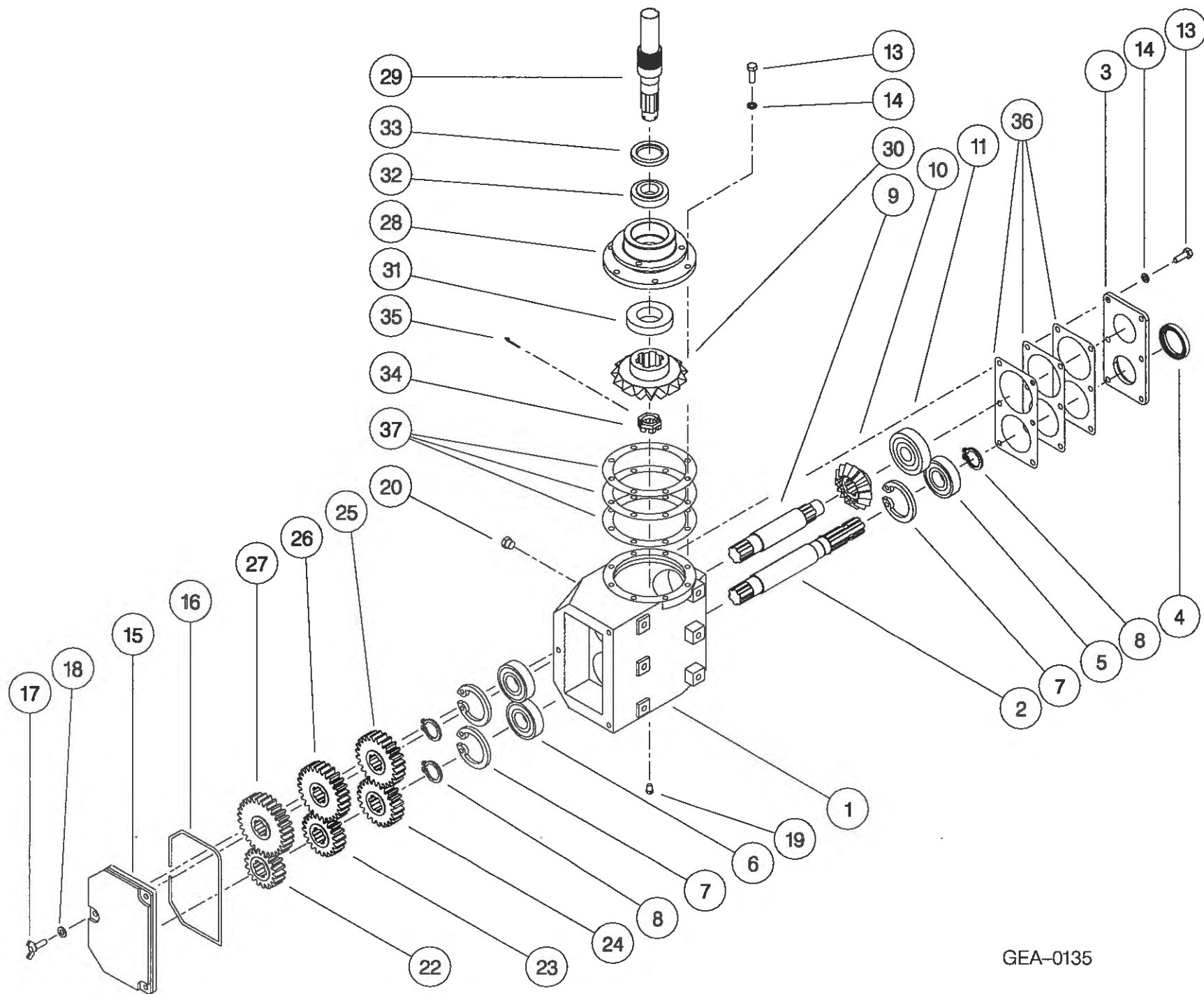


**Shelbourne Reynolds Engineering Limited**

ASSY NUMBER: GEA-0135      ASSY DESCRIPTION: 5 SPEED G.BOX ASSY ALUM/FINNED 1997 (WITH DROP BOX)

ITEM	PART NO	DESCRIPTION	QTY	ITEM	PART NO	DESCRIPTION	QTY
1	191821 01	GEARBOX CASING	1				
2	191829 01	INPUT SHAFT	1				
3	191825 01	SEAL HOUSING	1				
4	SEA-0550	ROTARY SHAFT SEAL	1				
5	BRG-6600	BEARING	1				
6	BRG-6601	BEARING	2				
7	CIR-3800	CIRCLIP	3				
8	CIR-2700	CIRCLIP	3				
9	191828 01	LAYSHAFT	1				
10	191823 01	BEVEL GEAR (15T)	1				
11	BRG-6800	BEARING	1				
12							
13	HSS-0194	SET SCREW	14				
14	WSH-0061	SPRING WASHER	14				
15	192924 01	REMOVABLE COVER	1				
16	ORA260000	'O' RING SEAL STRIP	0.7				
17	SCW-4760	WING SCREW	3				
18	WSH-1301	SHAKEPROOF WASHER	3				
19	FIT-0223	PLUG	1				
20	FIT-0218	BREATHER	1				
21							
22	191822 18	CHANGE GEAR (18T)	1				
23	191822 20	CHANGE GEAR (20T)	1				
24	191822 22	CHANGE GEAR (22T)	1				
25	191822 24	CHANGE GEAR (24T)	1				
26	191822 26	CHANGE GEAR (26T)	1				
27	191822 28	CHANGE GEAR (28T)	1				
28	191691 02	OUTPUT HOUSING (HOLES, 1997)	1				
29	191885 01	OUTPUT SHAFT	1				
30	191824 01	BEVEL GEAR (18T)	1				
31	BRG-6000	BEARING	1				
32	BRG-5700	BEARING	1				
33	SEA-0565	ROTARY SHAFT SEAL	1				
34	191843 01	SLOTTED NUT	1				
35	PIN-1168	SPLIT PIN	1				
36	191830	GASKET SET	1				
37	191831	GASKET SET	1				

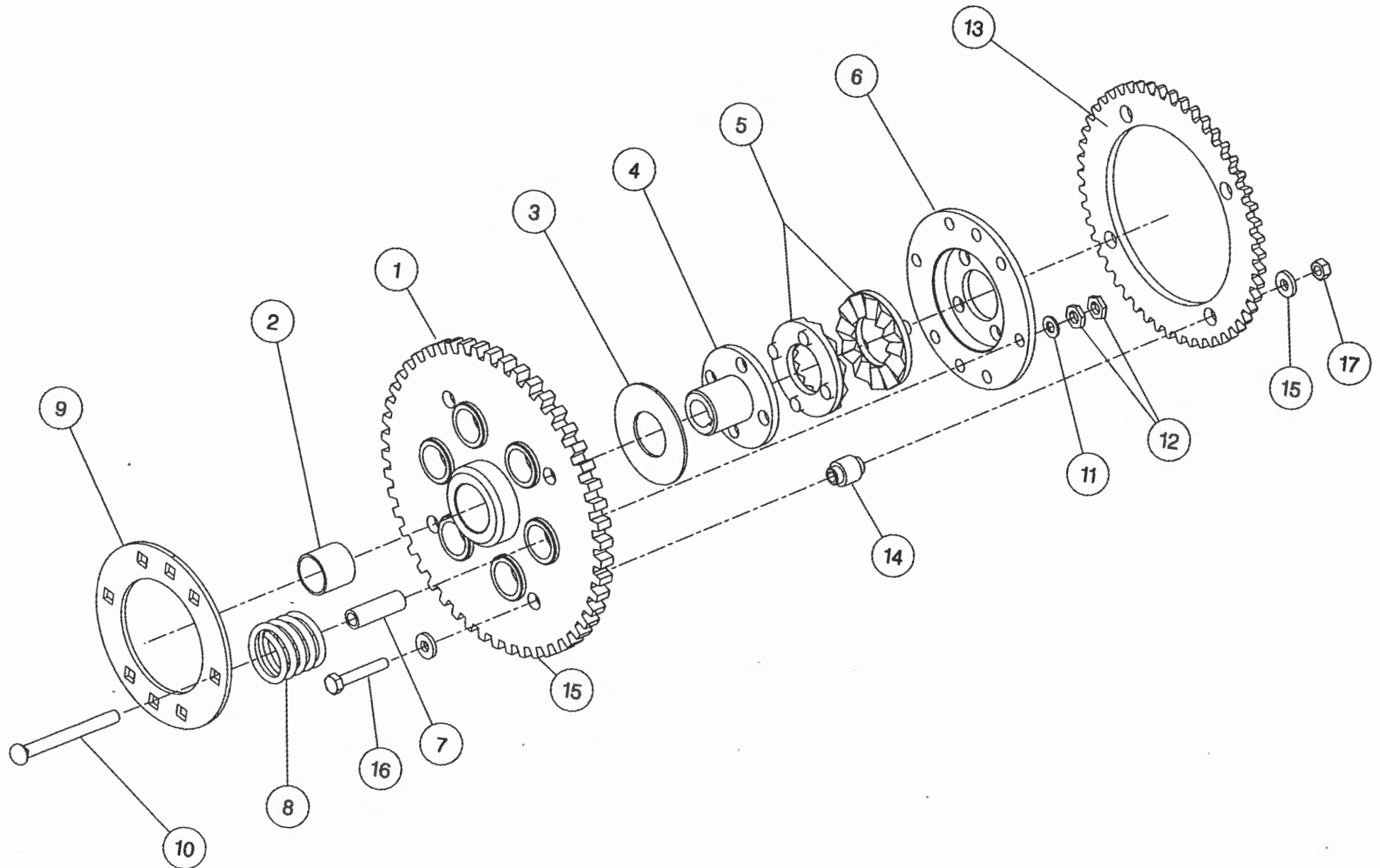




GEA-0135

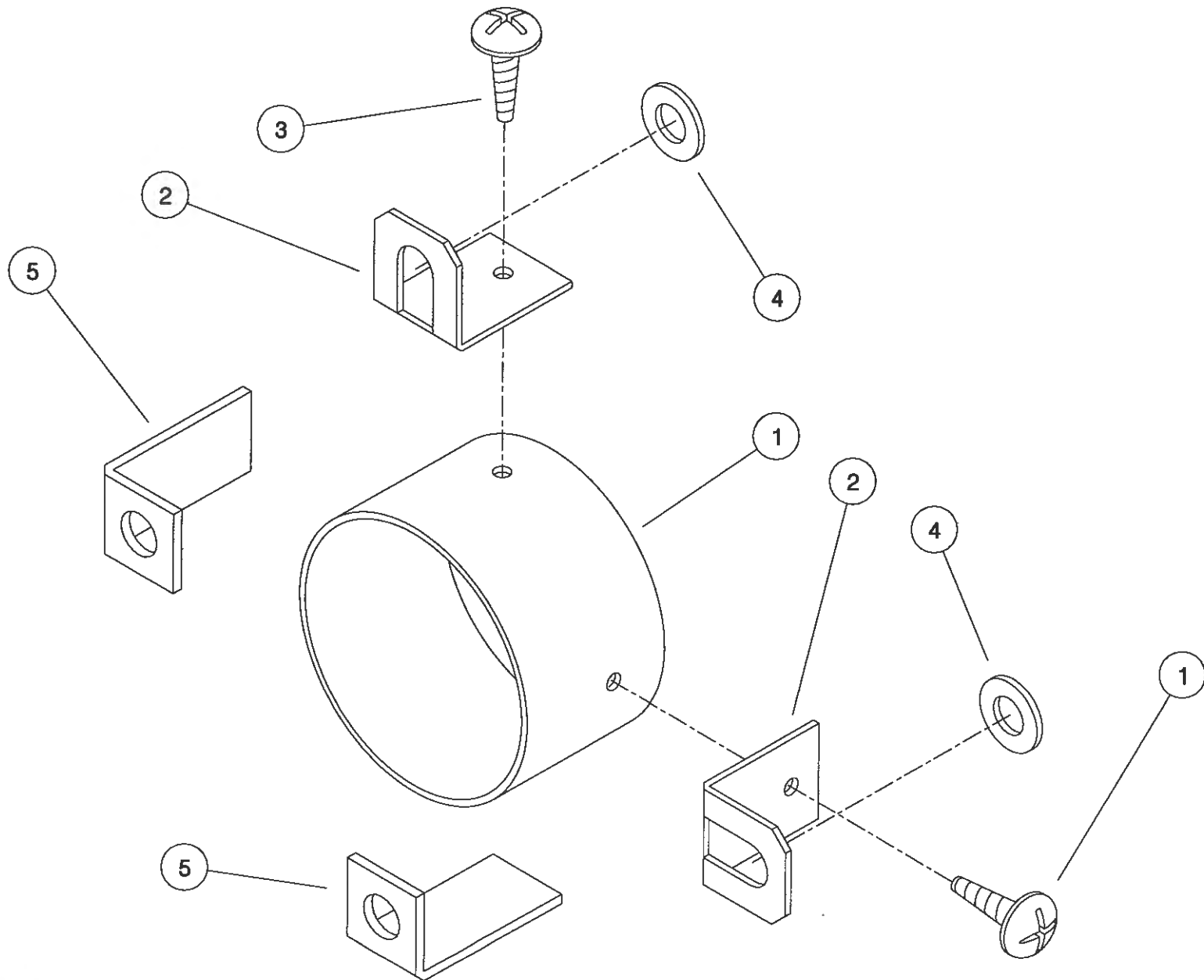
**Shelbourne Reynolds Engineering Limited**

ASSY NUMBER:		KIT-00115		ASSY DESCRIPTION:		AUGER DRIVE SPROCKET/CLUTCH ASSY	
ITEM	PART NO	DESCRIPTION	QTY	ITEM	PART NO	DESCRIPTION	QTY
1	192763 05	SPROCKET ASSY 50T	1				
2	BSH-3019	BUSH	1				
3	192008 01	THRUST WASHER	1				
4	192013 01	CLUTCH HUB	1				
5	131005	CLUTCH PLATE	2				
6	192014 01	DRIVE DISC	1				
7	131073 04	SPACER (1999 ONWARDS-62mm)	6				
OR	131073 03	SPACER (PRE 1999-67mm) 6	6				
8	131063	SPRING	6				
9	192009 01	FIXING RING	1				
10	BLTF12570	COACH BOLT	6				
11	WSH-0018	PLAIN WASHER	6				
12	NUT-0170	PLAIN NUT	12				
13	192254 01	SPROCKET 50T	1				
14	192253 02	SPACER	4				
15	190119 11	WASHER	8				
16	BLTA10440	BOLT	4				
17	NUT-0265	NYLOC NUT	4				



## 42

ASSY NUMBER:		KIT-00525		ASSY DESCRIPTION: PTO END GUARD			
ITEM	PART NO	DESCRIPTION	QTY	ITEM	PART NO	DESCRIPTION	QTY
1	192985 06	GUARD TUBE	1				
2	192992 01	GUARD SECURING BRACKET	2				
3	SCW-5104	SCREW	2				
4	WSH-0015	WASHER	2				
5	191763 01	PTO BRACKET	2				

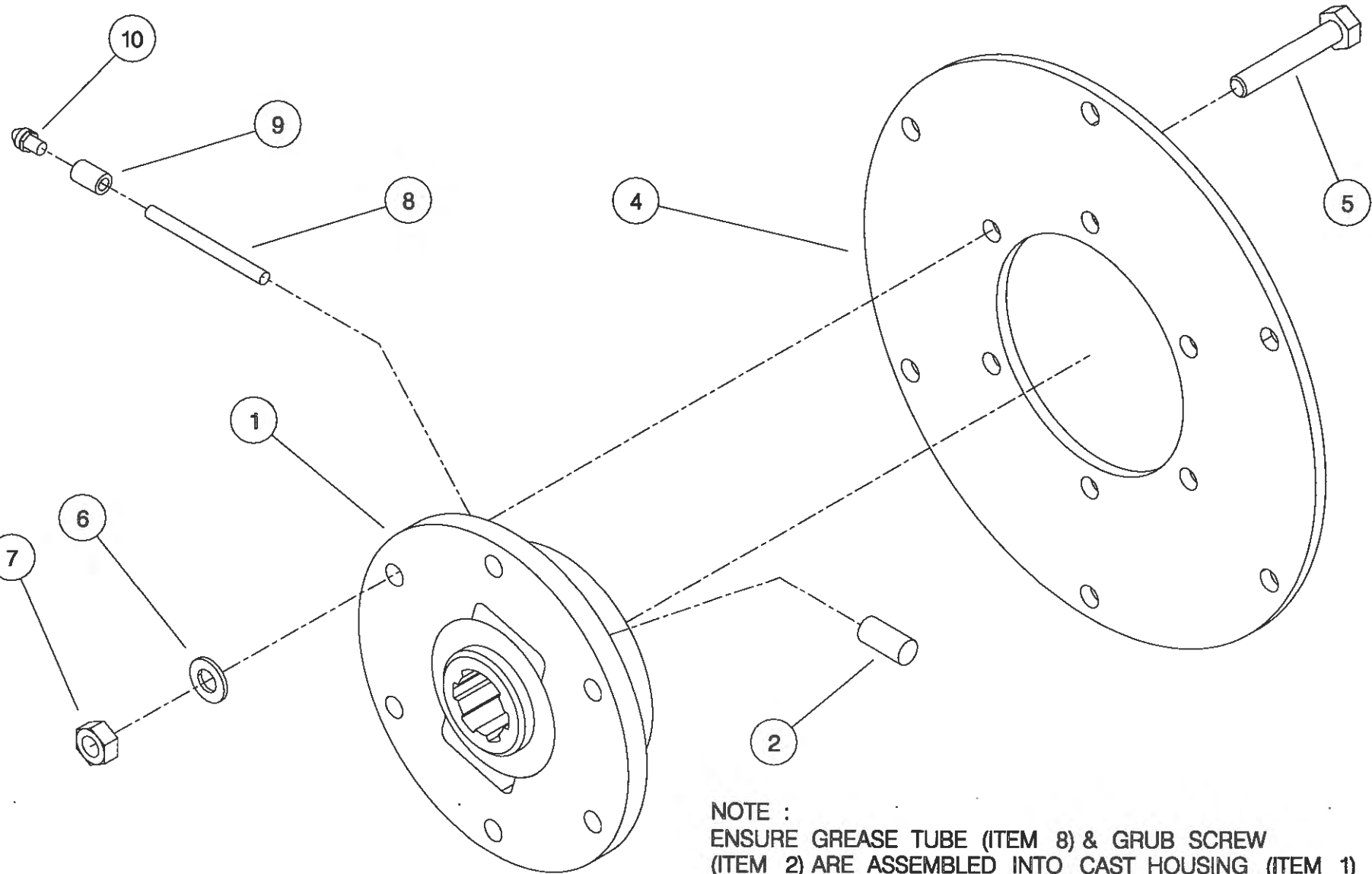


THIS KIT FIXES TO :  
R.X HEADERS - DIRECTLY ON TO DROP BOX ASSY.  
C.X HEADERS - ON TO REAR SHAFT SUPPORT BEARING PLATE.

KIT-00525

## 44

ASSY NUMBER:		KIT-00976		SUB ASSY DESCRIPTION: BALL JOINT COUPLING (CAST ROTOR)			
ITEM	PART NO	DESCRIPTION	QTY	ITEM	PART NO	DESCRIPTION	QTY
1	193114 01	SPLINED BALL	1				
2	SCW-4530	GRUB SCREW	1				
3							
4	193106 01	DRIVE RING PLATE	1				
5	HSS-0198	SETSCREW	6				
6	WSH-0015	WASHER	6				
7	NUT-0265	NUT	6				
8	193077 01	GREASE TUBE	1				
9	193078 01	GREASE TUBE ADAPTOR	1				
10	NIP-00600	GREASE NIPPLE	1				



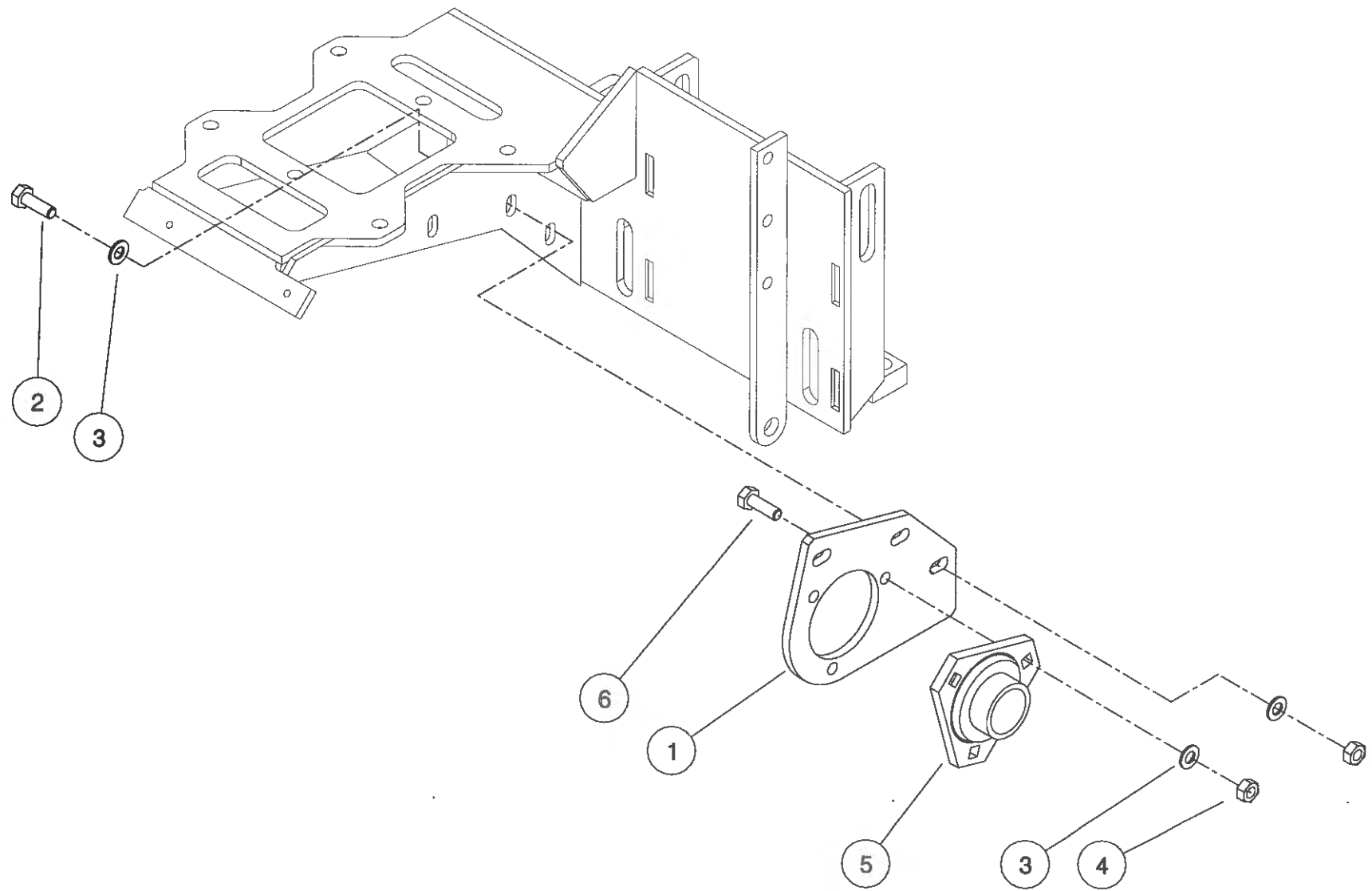
NOTE :  
 ENSURE GREASE TUBE (ITEM 8) & GRUB SCREW  
 (ITEM 2) ARE ASSEMBLED INTO CAST HOUSING (ITEM 1)  
 THE ORIENTATION SHOWN IS FOR A R.H. ROTOR  
 OPPOSITE ORIENTATION FOR L.H. ROTOR.

KIT - 00976

## 46

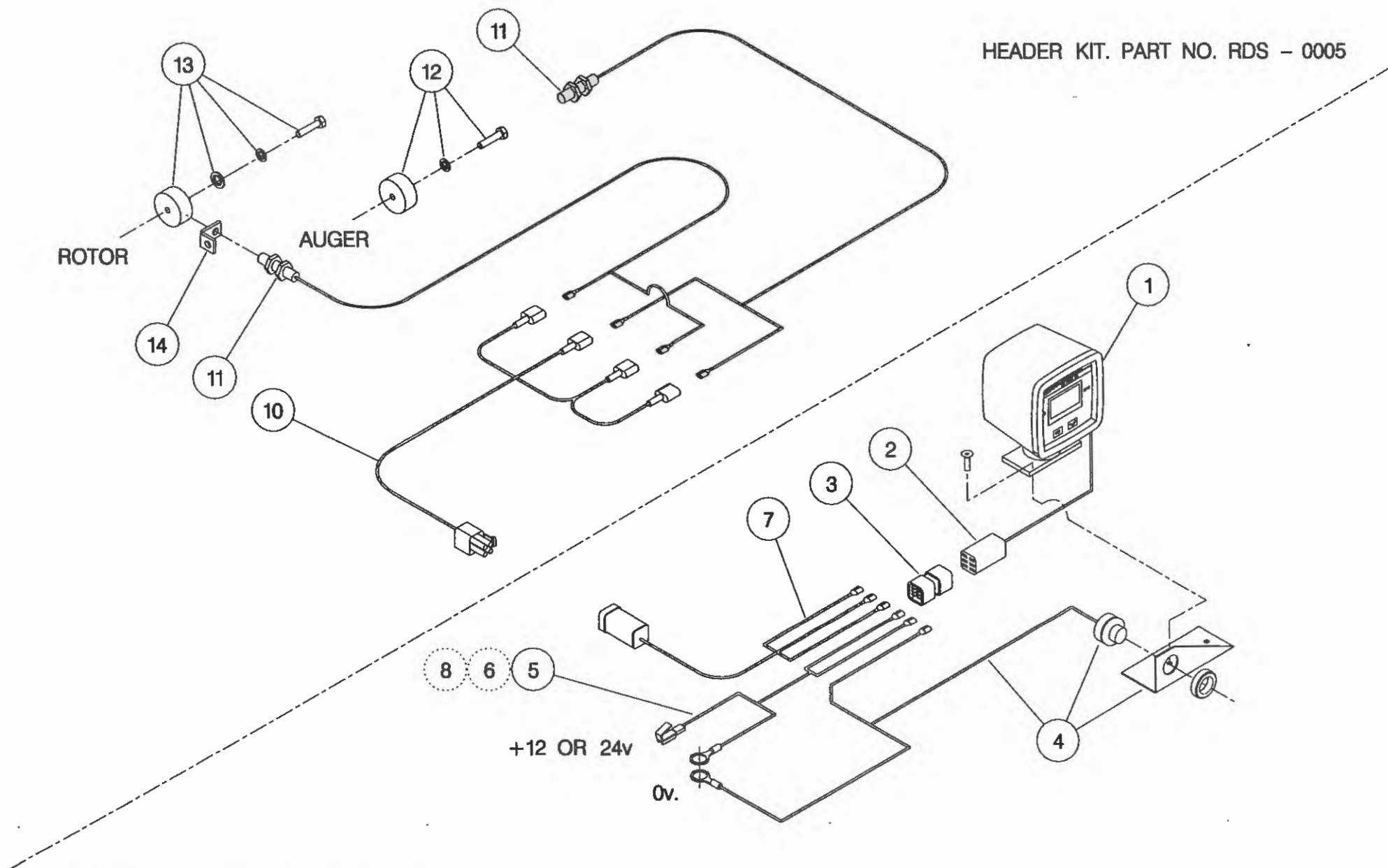
ASSY NUMBER:		KIT-01219		SUB ASSY DESCRIPTION:		INPUT SHAFT SUPPORT KIT (AUSTRALIA)	
ITEM	PART NO	DESCRIPTION	QTY	ITEM	PART NO	DESCRIPTION	QTY
1	194044 01	BEARING SUPPORT PLATE	1				
2	HSS-0198	SETSCREW	3				
3	WSH-0015	PLAIN WASHER	9				
4	NUT-0265	NYLOC NUT	6				
5	BRG-3220	BEARING	1				
6	HSS-0194	SETSCREW	3				





**Shelbourne Reynolds Engineering Limited**

ASSY NUMBER: RDS-0001/RDS-0005				ASSY DESCRIPTION: TACHO KIT			
ITEM	PART NO	DESCRIPTION	QTY	ITEM	PART NO	DESCRIPTION	QTY
1	RDS-0010	TACHO HEAD COMPLETE	1	13	RDS-0020	MAGNET CARRIER ,	1
2	RDS-0011	TACHO HEAD PLUG & ARMS	1			SET SCREW ,	1
3	RDS-0012	HARTING CONNECTOR &	1			PENNY WASHER &	1
		STICKER	1			SPRING WASHER	1
4	RDS-0013	AUDIBLE ALARM,	1	14	RDS-0021	ROTOR SENSOR BRACKET	1
		FIXING BRACKET &	1				
		SELF TAP.SCREWS	2				
5	RDS-0014	POWER CONNECTION LEAD	1				
6	FUS-0022	FUSE	1				
7	RDS-0015	COMBINE LEAD	1				
8	RDS-0016	24V-12V CONVERTER KIT (NOT INCLUDED IN RDS-0001)	1				
9							
10	RDS-0017	HEADER LEAD	1				
11	RDS-0018	SHAFT SENSOR	2				
12	RDS-0019	MAGNET ,	1				
		TAPTITE BOLT &	1				
		FIBRE WASHER	1				



COMBINE KIT. PART NO. RDS - 0001

HEADER KIT. PART NO. RDS - 0005

NOTE :

ITEM 6 IS USED IF POWER SUPPLY IS NOT FUSED.

ITEM 8 IS USED IF POWER SUPPLY IS 24V, -VE EARTH. (NOT INCLUDED IN RDS - 0001).

ITEM 4 (ALARM ) IS BUILT INTO ITEM 1 (TACHO HEAD ) ON LATER MODELS.



# **NUMERIC PARTS LIST**

<b>PART No.</b>	<b>PAGE</b>	<b>PART No.</b>	<b>PAGE</b>	<b>PART No.</b>	<b>PAGE</b>
127075 12	30	191774 01	8	192254 01	40
127075 16	30		16	192258 01	8
131005	40	191777 01	8	192263 01	8
131014 01	8		16	192265 01	8
131041 01	16	191798 01	34	192266 01	20
131063	40	191799 01	34	192273 01	20
131073 04	40	191800 01	34	192274 01	20
190060 06	8	191801 01	36	192287 01	20
	16	191803 01	36	192289 01	20
190119 04	16	191807 01	36	192304 01	26
190119 05	6	191812	34	192344 01	8
190119 11	40	191813	34	192354 01	20
190361 01	6	191819 01	34	192355 01	20
190548 01	36	191821 01	38	192363 05	24
190702 04	30	191822 18	38	192364 01	24
191034 12	26	191822 20	38	192368 01	24
191040 01	8	191822 22	38	192494 01	26
	16	191822 24	38	192502 01	28
191259 01	26	191822 26	38	192524 07	6
191259 02	26	191822 28	38	192543 01	26
191285 02	6	191823 01	38	192550 01	26
191339 01	26	191824 01	38	192555 01	30
191340 01	26	191825 01	38	192570 01	30
191355 01	30	191828 01	38	192636 01	14
191359 01	30	191829 01	38	192636 06	14
191642 01	6	191830	38	192679 01	11
191652 01	16	191831	38		12
191680 01	16	191843 01	38	192718 01	6
191687 01	36	191884 01	36		18
191691 02	38	191885 01	38	192763 05	40
191692 01	36	191894 01	36	192812 01	18
191692 02	36	191928 01	36	192813 01	18
191693 01	36	191981 01	6	192839 01	30
191694 01	36	191982 01	30	192876 01	28
191696 01	36	191983 01	30	192876 02	28
191715 01	34	192008 01	40	192890 02	11
191716 01	34	192009 01	40		12
191717 01	34	192011 01	24	192892 01	11
191718 01	34	192013 01	40		12
191723 01	36	192014 01	40	192892 02	11
191723 02	36	192037 01	6		12
191725 01	36	192038 01	6	192892 03	11
191735 01	34	192055 01	26		12
191737 01	36	192055 02	26	192897 01	12
191756 01	36	192091 01	16	192899 01	11
191757	36	192193 01	26	192924 01	38
191758	36	192193 02	26	192953 01	30
191759 01	36	192227 01	24	192954 01	26
191763 01	42	192227 02	24	192954 02	26
191765 01	36	192253 02	40	192959 01	12

# **NUMERIC PARTS LIST**

<b>PART No.</b>	<b>PAGE</b>	<b>PART No.</b>	<b>PAGE</b>	<b>PART No.</b>	<b>PAGE</b>
192959 01	11	193478 01	30	BRG-6600	36
192969 01	20	193480 01	26		38
192970 01	20	193480 02	26	BRG-6601	38
192970 02	20	193504 01	28	BRG-6800	38
192985 06	42	193506 01	26	BRG-7000	34
192992 01	42	193838 02	6	BRG-7020	34
193009 01	30	194044 01	46	BRG-7040	34
193077 01	44	194057 01	26	BSH-1530	16
193078 01	44	194074 01	32		20
193097 01	36	194075 01	32	BSH-3030	18
193103 01	12	200035 03	14		26
193106 01	44	200038 01	14	BSH-3070	26
193114 01	44	200120 03	14	BSHZ02553	8
193117 02	11	610250 01	30	CHN-01682	8
193118 01	11	610257 01	30	CIR-0470	8
	12	AUG-02500	24		16
193118 02	11	BLT-2316	8	CIR-1125	8
	12		16	CIR-1150	26
193203 01	24	BLT-3745	14	CIR-2700	38
193218 01	26	BLT-3790	14	CIR-3800	38
193219 01	26	BLT-4710	26	CIR-4000	36
193220 01	28	BLTA06320	20	CLP-01012	22
193221 01	26	BLTA06470	20	EDS-11400	30
193222 01	26	BLTA08350	30	EDS-11600	18
193229 01	26	BLTA08470	30	FIT-0213	22
193230 01	26	BLTA08500	20	FIT-0218	38
193231 01	26	BLTA08530	20	FIT-0223	34
193244 01	26	BLTA10290	18		38
193248 01	26		36	FIT-0253	34
193251 01	26	BLTA10350	20		36
193287 01	18	BLTA10440	40	FIT-0254	34
193291 01	28	BLTA10520	28	FIT-0255	36
193293 01	20	BLTA10530	20	FITD00005	36
193295 01	28	BLTA12290	16	GEA-0095	16
193297 01	30	BLTA12380	26	GEA-0101	16
193299 01	30	BLTF12570	40	GEA-0135	16
193311 01	20	BPG-00200	11	GSTA14405	18
193312 01	20	BRG-0240	14	HHBC28610	22
193363 01	26		24	HHBC53610	22
193382 01	11	BRG-1994	8	HPPD07100	22
	12	BRG-1995	8	HSS-0084	20
193387 01	30		16		20
193388 01	30		20		26
193389 01	30	BRG-2020	24		30
193390 01	30	BRG-22500	8	HSS-0086	8
193391 01	30	BRG-3220	46		22
193392 01	30	BRG-3275	28	HSS-0092	26
193393 01	30	BRG-5700	38	HSS-0140	26
193395 01	30	BRG-5800	36		28
193451 01	24	BRG-6000	38		30

# **NUMERIC PARTS LIST**

<u>PART No.</u>	<u>PAGE</u>	<u>PART No.</u>	<u>PAGE</u>	<u>PART No.</u>	<u>PAGE</u>
HSS-0140	6	NUT-0260	8	SCW-0515	28
HSS-0145	36		22	SCW-1735	26
HSS-0191	20		24	SCW-4530	44
	24	NUT-0263	20	SCW-4535	14
	34		24	SCW-4700	30
HSS-0194	16		26	SCW-4760	38
	26		28	SCW-4959	24
	38		30	SCW-4960	24
	46		36		26
HSS-0198	44	NUT-0265	14	SCW-5104	42
	46		16	SCW-5180	11
HSS-0202	36		18		12
HSS-0235	28		20		22
HSS-0238	16		24	SEA-0550	38
HSS-0241	14		26	SEA-0565	38
	28		28	SEA-0590	34
HSS-0260	26		40	SEA-0600	34
HSS-0265	20		44	SEA-0610	36
HSS-0315	20		46	SPGA32221	20
HSS-0316	26	NUT-0269	8	TEXT	36
	36		14		36
HSS-0318	8		16		36
HSSA10680	20		20	WSH-0009	8
HSSF08174	11		26		20
	12		28		22
HSSF10174	36	NUT-0271	8		24
HSSF12204	24		16		26
HSSG10204	11		36		30
	12	NUT-0580	14	WSH-0012	20
HSSG12174	16	NUT-3000	36		24
K0807035	8	NUT-3010	34		26
K0807050	14	NUTA07120	28		28
K0807060	14	ORA260000	38		30
K1008045	36	PFS-00500	22		36
KIT-00115	14	PIN-01790	26	WSH-0015	14
KIT-00525	16	PIN-1150	14		16
KIT-00976	11		26		18
LTC-00040	30	PIN-1168	38		20
NIP-0001	18	POP-0006	6		24
	26		26		26
NIP-00600	44		30		28
NUT-0164	28	PSP-01201	20		36
	30	PSP-01800	20		42
NUT-0170	14	PTO-09010	16		44
	26	SCBA08172	24		46
	40	SCCA10412	24	WSH-0018	8
NUT-0260	20	SCW-0139	34		16
	26	SCW-0190	34		20
	26		36		26
	30	SCW-0196	36		40

## NUMERIC PARTS LIST

<u>PART No.</u>	<u>PAGE</u>	<u>PART No.</u>	<u>PAGE</u>	<u>PART No.</u>	<u>PAGE</u>
WSH-0018	14				
	28				
WSH-0024	8				
	16				
	20				
	26				
	36				
WSH-0030	14				
WSH-0056	20				
	24				
	26				
	30				
WSH-0058	6				
	24				
	30				
	34				
WSH-0061	18				
	20				
	24				
	34				
	36				
	38				
WSH-0065	16				
	28				
WSH-0070	8				
	20				
	26				
WSH-1034	11				
	12				
WSH-1038	30				
WSH-1300	36				
WSH-1301	34				
	36				
	38				
WSH-1547	26				
WSH-6000	36				
WSH-6010	34				