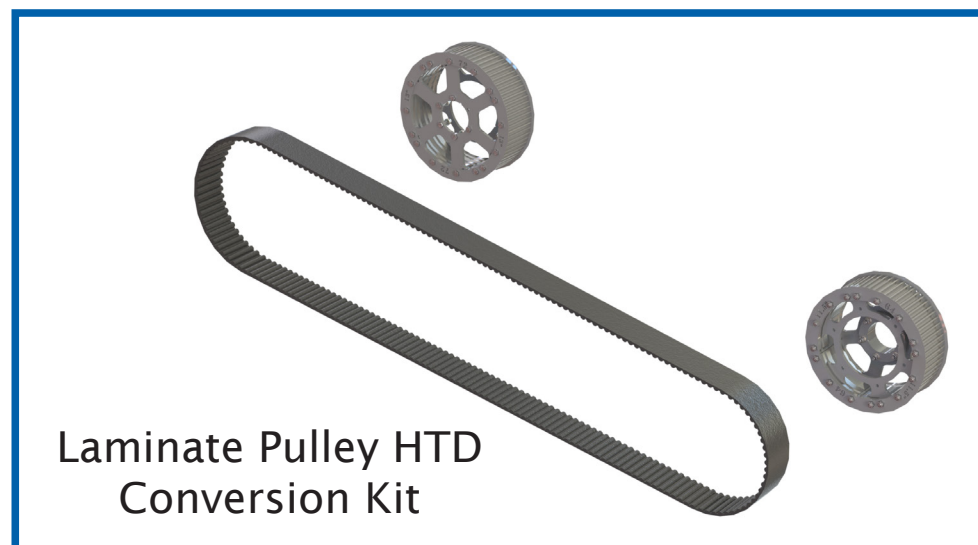


## Variable Speed To HTD Conversion Kit Options For 2005 To 2017 CVS / RVS Headers With No Rotor Gearbox

Issue	Date	Changes
1	22/05/2025	Technical parts bulletin created

**Convert an existing variable speed drive CVS or RVS  
to a high torque drive (HTD) fixed drive.**



- **Reduced servicing**
- **Fewer moving parts**
- **Transmits more power to the rotor**
- **Different kits for different combines**
- **Use variable speed feeder house to change header speed**

Remove the variable speed pulleys and belt and replace them with one of these conversion kits.  
Stripping rotor speeds can be adjusted by altering your combine feeder house speed or  
by swapping variations of pulley sizes.

Note - some cutting and drilling of the frame is required.

ASSY NUMBER: KIT-01488				ASSY DESCRIPTION: CASE IH HTD LAMINATE CONVERSION KIT FOR CASE IH FLAGSHIP MODELS ONLY			
ITEM	PART NO	DESCRIPTION	QTY	ITEM	PART NO	DESCRIPTION	QTY
1							
2	292864 01	64T HTD LAMINATE PULLEY ASSY	2				
3							
4	KIT-01486	CVS LAMAINATE PULLEY CONV' KIT	1				
5							
6							
7							
8							
9							
10							
11							
12							
13							
14							
15							
16							
17							
18							
19							
20							
21							
22							
23							
24							
25							
26							
27							
28							
29							
30							
31							
32							
33							
34							
35	KIT-01487	CVS LAMINATE PULLEY GUARD KIT	1				
36							
37	KIT-19095	SPARE LAMINATE PULLEY MTG KIT	NOT INC				
38							
39							

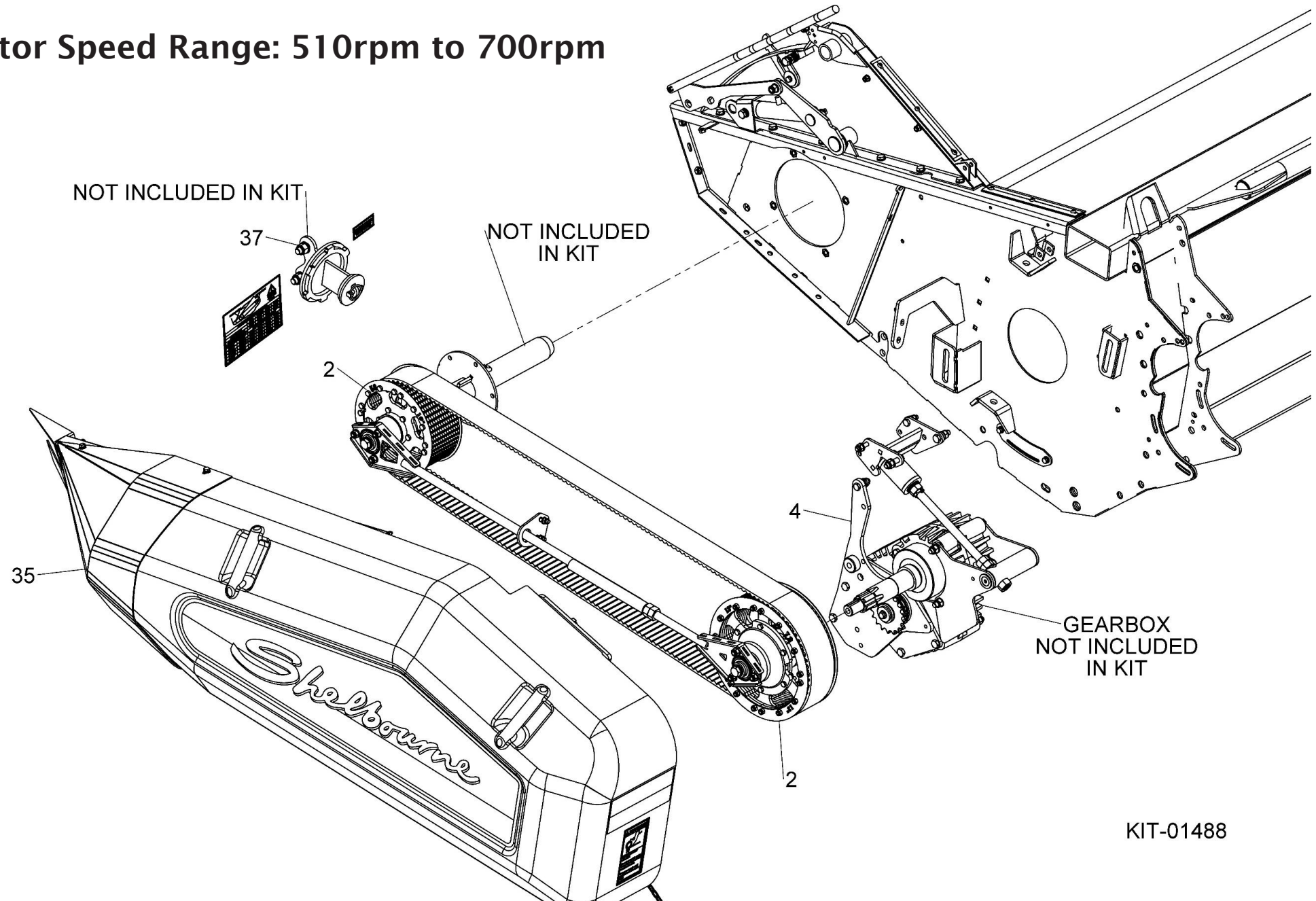
**DO NOT RUN AUGER OVER 200rpm**

64T PULLEY FITTED TO GEARBOX  
64T PULLEY FITTED TO ROTOR  
ROTOR SPEED RANGE = 510-700rpm

FOR ALTERNATIVE ROTOR SPEEDS  
ORDER  
56T PULLEY, PART No 293125 01  
OR  
72T PULLEY, PART No 292872 01

**ITEM 37 NOT INCLUDED  
ONLY REQUIRED IF ADDITIONAL  
PULLEY SUPPLIED**

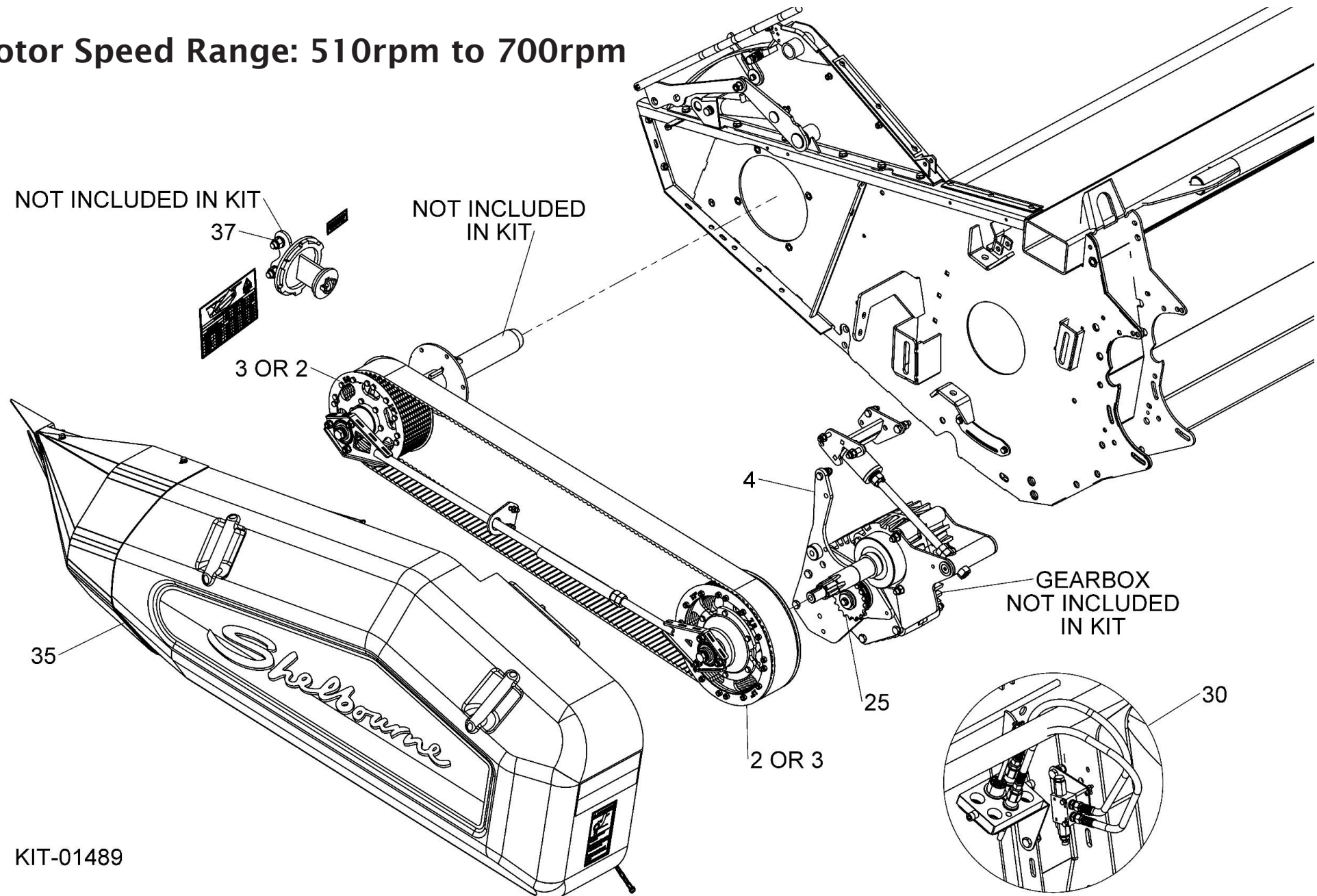
- Rotor Speed Range: 510rpm to 700rpm



KIT-01488

ASSY NUMBER: KIT-01489				ASSY DESCRIPTION: JOHN DEERE HTD LAMINATE CONVERSION KIT FOR 60, 70, S600 & S700 SERIES (NOT X9)			
ITEM	PART NO	DESCRIPTION	QTY	ITEM	PART NO	DESCRIPTION	QTY
1							
2	292864 01	64T HTD LAMINATE PULLEY ASSY	1				
3	292872 01	72T HTD LAMINATE PULLEY ASSY	1				
4	KIT-01486	CVS LAMAINATE PULLEY CONV' KIT	1				
5							
6							
7							
8						<b>DO NOT RUN AUGER OVER 200rpm</b>	
9							
10						64T PULLEY FITTED TO GEARBOX	
11						72T PULLEY FITTED TO ROTOR	
12						ROTOR SPEED RANGE = 510-700rpm	
13							
14							
15						64T PULLEY FITTED TO ROTOR	
16						ROTOR SPEED RANGE = 650-880rpm	
17							
18						FOR SLOWER ROTOR SPEEDS ORDER	
19						56T PULLEY, PART No 293125 01	
20							
21							
22							
23							
24							
25	192768 16	AUGER SPROCKET (15 TEETH)	1				
26							
27							
28							
29							
30	KIT-01733	JD MULTI COUPLER KIT	1				
31							
32							
33							
34							
35	KIT-01487	CVS LAMINATE PULLEY GUARD KIT	1				
36							
37	KIT-19095	SPARE LAMINATE PULLEY MTG KIT	NOT INC			<b>ITEM 37 NOT INCLUDED</b>	
38						<b>ONLY REQUIRED IF ADDITIONAL</b>	
39						<b>PULLEY SUPPLIED</b>	

- **Rotor Speed Range: 510rpm to 700rpm**

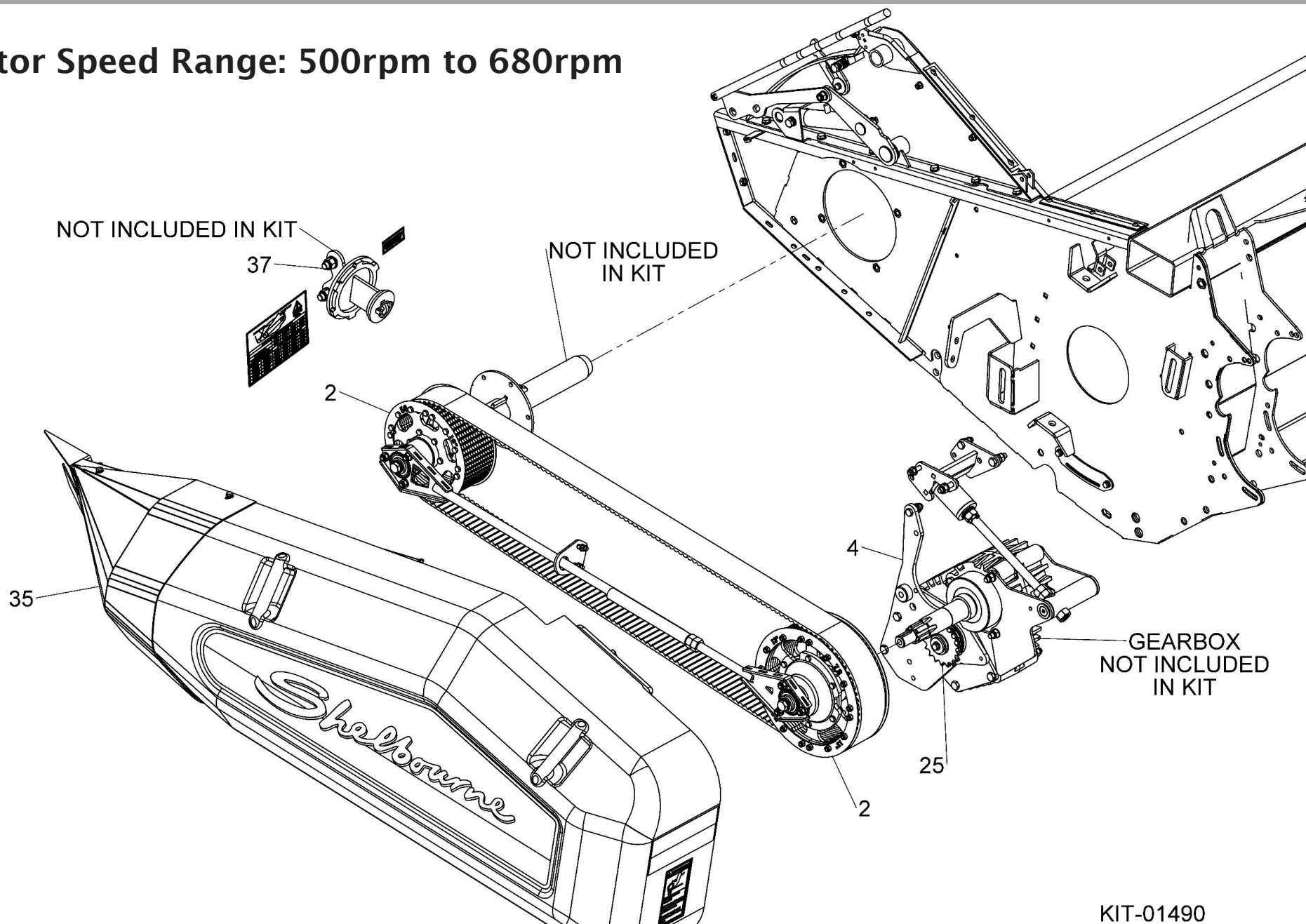


KIT-01489

ASSY NUMBER: KIT-01490				ASSY DESCRIPTION: CLAAS HTD LAMINATE CONVERSION KIT			
ITEM	PART NO	DESCRIPTION	QTY	ITEM	PART NO	DESCRIPTION	QTY
1							
2	292864 01	64T HTD LAMINATE PULLEY ASSY	2				
3							
4	KIT-01486	CVS LAMAINATE PULLEY CONV' KIT	1				
5							
6							
7							
8						<b>DO NOT RUN AUGER OVER 200rpm</b>	
9							
10						64T PULLEY FITTED TO GEARBOX	
11						64T PULLEY FITTED TO ROTOR	
12						ROTOR SPEED RANGE = 500-680rpm	
13							
14						FOR ALTERNATIVE ROTOR SPEEDS	
15						ORDER	
16						56T PULLEY, PART No 293125 01	
17						OR	
18						72T PULLEY, PART No 292872 01	
19							
20							
21							
22							
23							
24							
25	192768 08	AUGER SPROCKET (13 TEETH)	1				
26	CHN-01910A	CHAIN HALF LINK	1				
27							
28							
29							
30							
31							
32							
33							
34							
35	KIT-01487	CVS LAMINATE PULLEY GUARD KIT	1				
36							
37	KIT-19095	SPARE LAMINATE PULLEY MTG KIT	NOT INC			<b>ITEM 37 NOT INCLUDED</b>	
38						<b>ONLY REQUIRED IF ADDITIONAL</b>	
39						<b>PULLEY SUPPLIED</b>	



- Rotor Speed Range: 500rpm to 680rpm



KIT-01490

ASSY NUMBER: KIT-01491				ASSY DESCRIPTION: AGCO HTD LAMINATE CONVERSION KIT (NOT FOR IDEAL COMBINE)			
ITEM	PART NO	DESCRIPTION	QTY	ITEM	PART NO	DESCRIPTION	QTY
1	293125 01	56T HTD LAMINATE PULLEY ASSY	1				
2							
3	292872 01	72T HTD LAMINATE PULLEY ASSY	1				
4	KIT-01486	CVS LAMAINATE PULLEY CONV' KIT	1				
5							
6							
7							
8							
9							
10							
11							
12							
13							
14							
15							
16							
17							
18							
19							
20							
21							
22							
23							
24							
25	192768 20	AUGER SPROCKET (12 TEETH)	1				
26							
27							
28							
29							
30	KIT-01736	AGCO MULTI COUPLER KIT	1				
31							
32							
33							
34							
35	KIT-01487	CVS LAMINATE PULLEY GUARD KIT	1				
36							
37	KIT-19095	SPARE LAMINATE PULLEY MTG KIT	NOT INC				
38							
39							

**DO NOT RUN AUGER OVER 200rpm**

56T PULLEY FITTED TO GEARBOX  
72T PULLEY FITTED TO ROTOR  
ROTOR SPEED RANGE = 500-680rpm

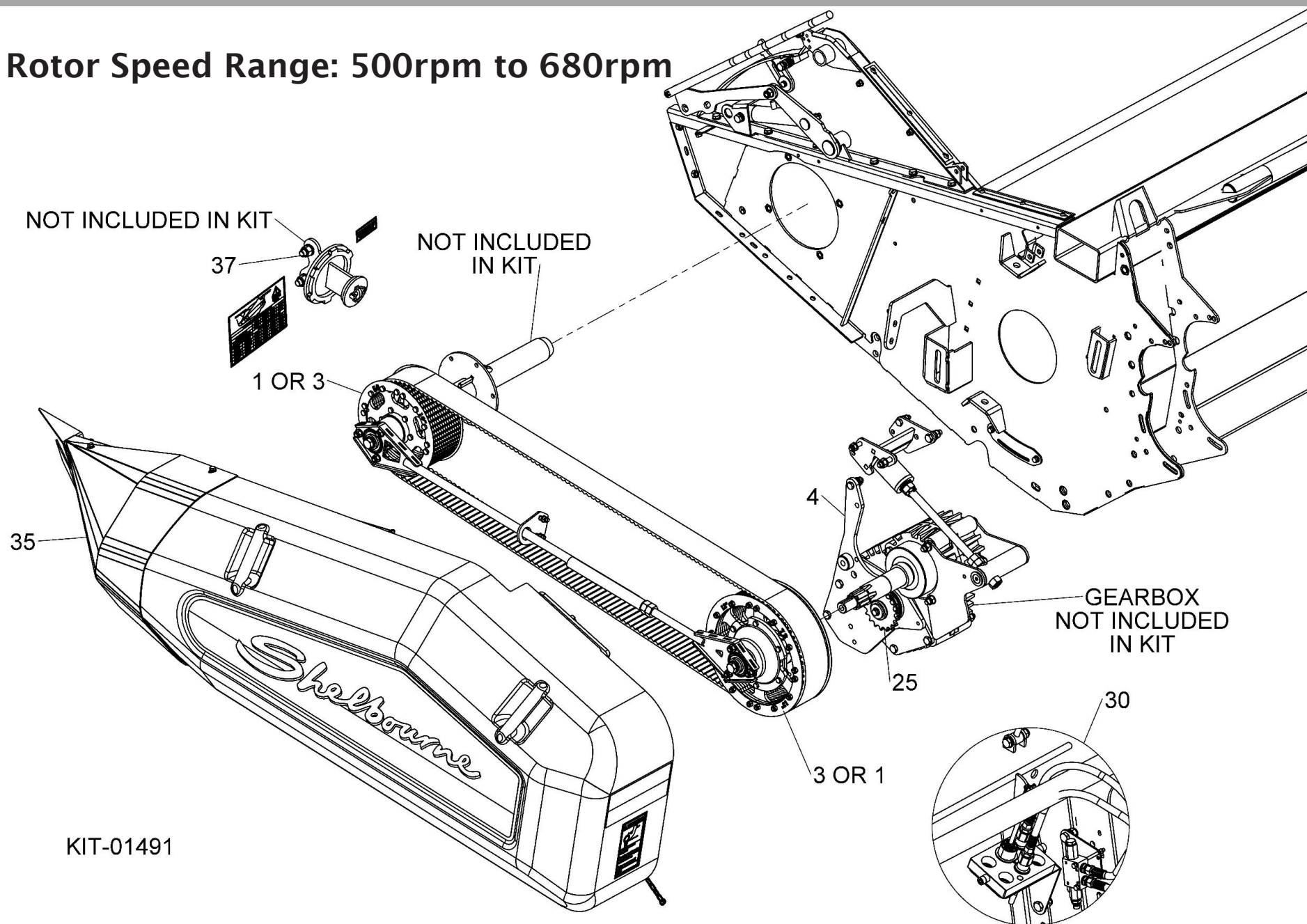
72T PULLEY FITTED TO GEARBOX  
56T PULLEY FITTED TO ROTOR  
ROTOR SPEED RANGE = 830-1000rpm

FOR ALTERNATIVE ROTOR SPEEDS  
ORDER  
64T PULLEY, PART No 292864 01

**ITEM 37 NOT INCLUDED  
ONLY REQUIRED IF ADDITIONAL  
PULLEY SUPPLIED**

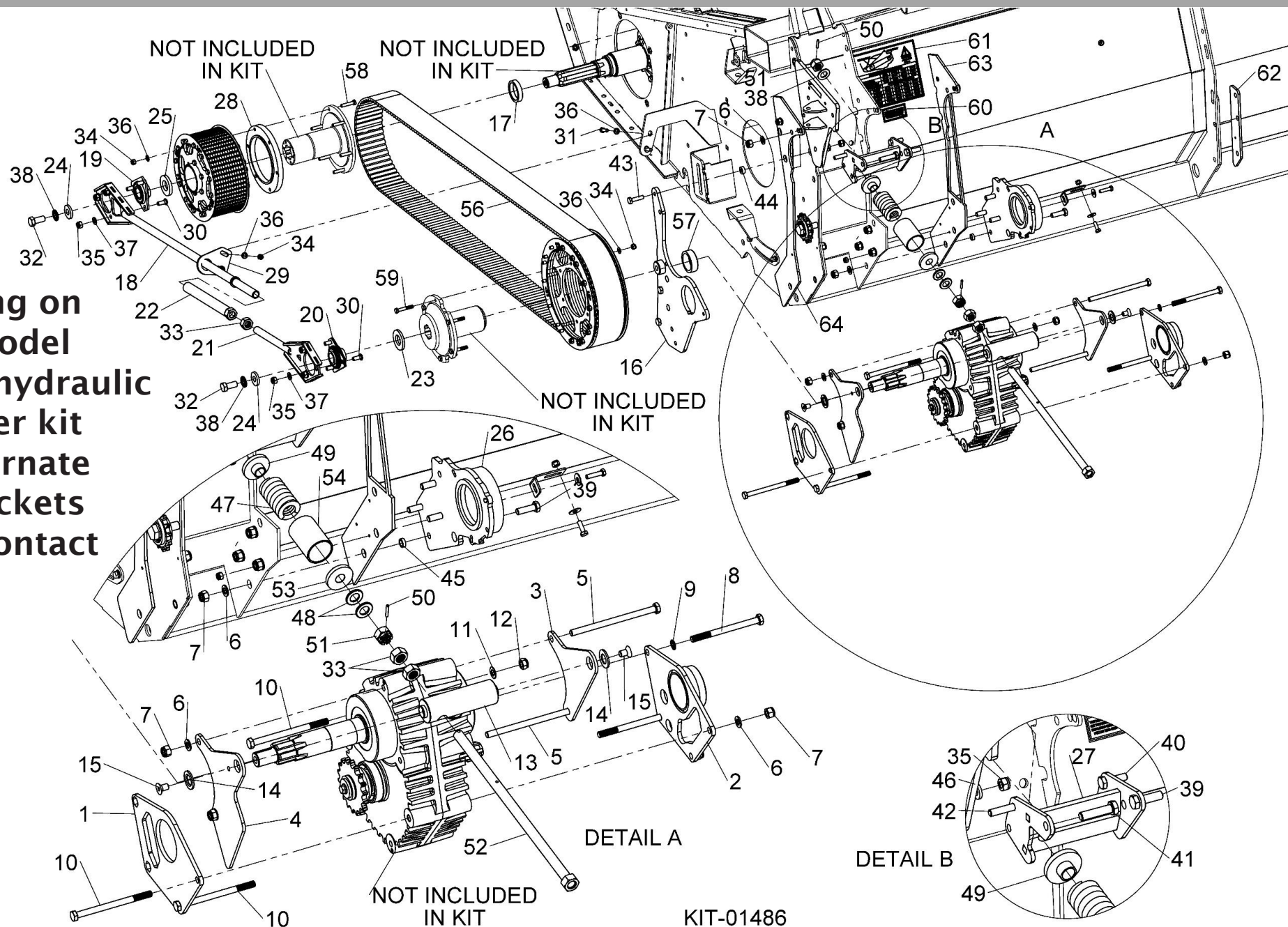


- Rotor Speed Range: 500rpm to 680rpm



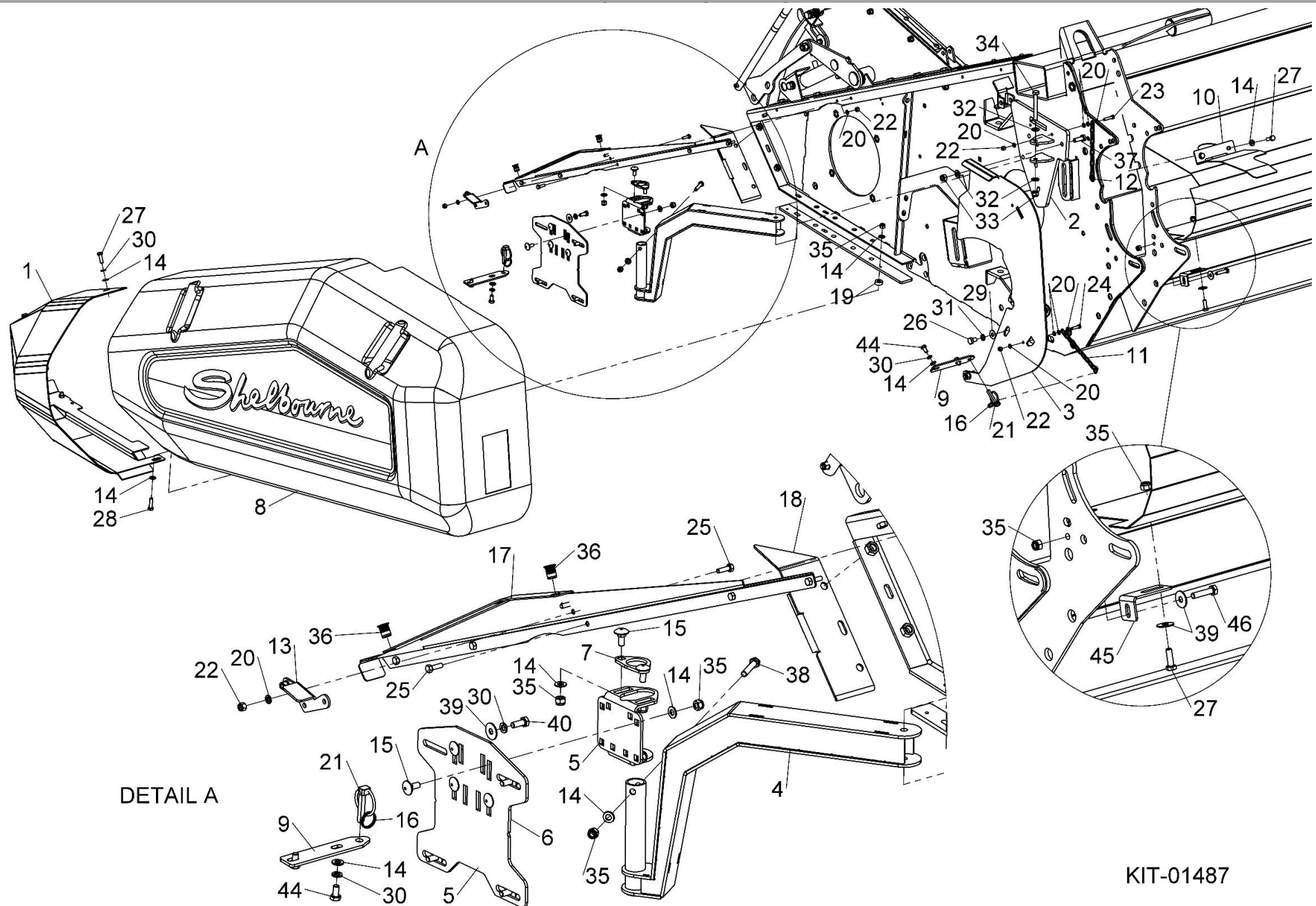
ASSY NUMBER: KIT-01486				ASSY DESCRIPTION: CVS LAMINATE PULLEY RETROFIT PARTS			
ITEM	PART NO	DESCRIPTION	QTY	ITEM	PART NO	DESCRIPTION	QTY
1	198021 01	G/BOX MOUNT SIDE PLT W/A	1	41	HSS-0260	SET SCREW	1
2	293558 01	GEARBOX MOUNTING SIDE PLATE	1	42	BLTA10290	HEX.HEAD BOLT	1
3	198025 01	G/BOX ADJ REAR MOUNT PLT	1	43	HSS-0202	SET SCREW	1
4	198026 01	G/BOX ADJ FRONT MOUNT PLT	1	44	190548 71	WASHER	1
5	BLTA12810	HEX HEAD BOLT	2	45	292600 21	WASHER	3
6	WSH-0018	PLAIN WASHER	12	46	292600 10	WASHER	1
7	NUT-0269	NYLOC NUT	12	47	SPGE02530	DIE SPRING	1
8	BLT-2276	HEX.HEAD BOLT	2	48	WSH-0030	PLAIN WASHER	3
9	WSHA20121	SHAKEPROOF WASHER	2	49	199738 01	SPRING BOSS	1
10	BLTA12750	HEX HEAD BOLT	3	50	PIN-1620	ROLL PIN	2
11	WSH-0019	PLAIN WASHER	1	51	NUT-0580	CASTLE NUT	2
12	NUT-0270	NYLOC NUT	1	52	198029 01	GEARBOX ADJUSTER ROD	1
13	198023 01	GEARBOX ADJUSTER	1	53	199737 01	SPRING BOSS	1
14	198024 01	G/BOX ADJ CSK WASHER	2	54	199736 01	SPRING SETTING TUBE	1
15	SCW-1930	CSK SKT HD SCREW	2	56	BEL-55350	SYNCHRO BELT	1
16	293844 01	GEARBOX SUPPORT PLT W/A	1	57	292586 01	SPACER	1
17	197487 01	SPACER	1	58	BLTA08324	HEX.HEAD BOLT	6
18	198236 01	TIE BAR W/A	1	59	BLTA08264	HEX HD BOLT	6
19	BRG-23000	BEARING	1	60	293189 01	DRIVE CHANGED DECAL	1
20	BRG-0240	BEARING	1	61	293182 01	SPEED SELECTION DECAL	1
21	198232 01	TIE ROD END W/A	1	62	293012 01	DRILLING TEMPLATE	1
22	198235 01	TIE ROD ADJUSTER W/A	1	63	290331 01	CUT & DRILL TEMPLATE	1
23	190548 36	WASHER	1	64	290332 01	CUT & DRILL TEMPLATE	1
24	198800 48	WASHER	2				
25	292600 23	WASHER	1				
26	293842 01	GEARBOX PIVOT PLATE W/A	1				
27	293848 01	ADJUSTER BRACKET W/A	1				
28	292865 01	HTD CONVERSION ALIGNMENT RING	1				
29	293721 01	TIE ROD PLATE	1				
30	BLT-3745	COACHBOLT	6				
31	HSS-0150	SET SCREW	2				
32	HSS-0315	SET SCREW	2				
33	NUT-0185	PLAIN HEX NUT	3				
34	NUT-0263	NYLOC NUT	14				
35	NUT-0265	NYLOC NUT	9				
36	WSH-0012	PLAIN WASHER	16				
37	WSH-0015	PLAIN WASHER	8				
38	WSHA30161	LOCK WASHER	2				
39	HSS-0250	SET SCREW	7				
40	HSS-0198	SET SCREW	1				

- Depending on combine model additional hydraulic multicoupler kit and/or alternate auger sprockets required, contact Shelbourne Reynolds.

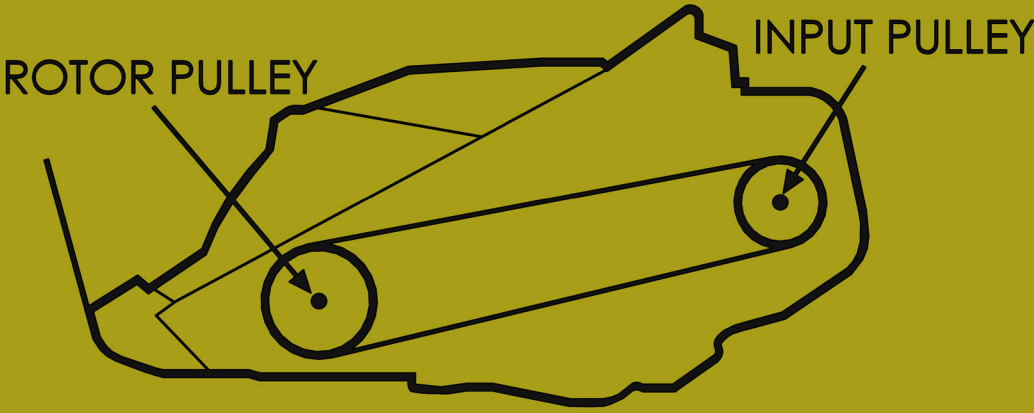


ASSY NUMBER: KIT-01487				ASSY DESCRIPTION: CVS LAMINATE PULLEY GUARD KIT			
ITEM	PART NO	DESCRIPTION	QTY	ITEM	PART NO	DESCRIPTION	QTY
1	290494 01	CORNER GUARD W/A	1	41	TPE-00250	REFLECTIVE TAPE - YELLOW	0.23
2	293722 01	PIVOT W/A	1	42	TPE-00251	REFLECTIVE TAPE - RED	0.23
3	290496 01	GUARD MOUNTING PLATE	1	43	291993 01	DRILLING TEMPLATE	1
4	199998 01	ARM W/A	1	44	HSS-0135	SET SCREW	4
5	290118 01	PIVOT BRACKET	1	45	199603 01	SMALL BRACKET	1
6	290119 01	MOUNTING PLATE	1	46	HSS-0152	SET SCREW	1
7	290540 01	CLAMP BRACKET	1				
8	KIT-01480	DRIVE END PLASTIC GUARD KIT	1				
9	290539 01	LOCATING PLATE	2				
10	198288 01	GEARBOX COVER PLT	1				
11	CHN-0145	CHAIN	0.17				
12	CHN-0145	CHAIN	0.17				
13	290880 01	GUARD SUPPORT	1				
14	WSH-0012	PLAIN WASHER	20				
15	BLT-4710	COACH BOLT	6				
16	CHA-30022	SPLIT KEYRING	2				
17	290514 01	GUARD MOUNTING PLATE	1				
18	293030 01	DIVIDER DEFLECTOR	1				
19	190548 23	WASHER	1				
20	WSH-0009	PLAIN WASHER	15				
21	PIN-01950	LYNCH PIN	2				
22	NUT-0260	NYLOC NUT	9				
23	HSS-0092	SET SCREW	1				
24	HSS-0088	SET SCREW	1				
25	HSS-0086	SET SCREW	7				
26	HSS-0185	SETSCREW	1				
27	HSS-0145	SETSCREW	7				
28	HSS-0150	SET SCREW	1				
29	WSHA10101	PENNY WASHER	1				
30	WSH-0058	SPRING WASHER	11				
31	WSH-0061	SPRING WASHER	1				
32	WSH-0015	PLAIN WASHER	4				
33	NUT-0265	NYLOC NUT	3				
34	BLTA10500	HEX.HEAD BOLT	1				
35	NUT-0263	NYLOC NUT	12				
36	NUTA13080	NUTSERT	2				
37	HSS-0194	SET SCREW	2				
38	HSS-0155	SET SCREW	1				
39	WSH-1038	PENNY WASHER	6				
40	HSS-0140	SETSCREW	4				





KIT-01487



DO NOT RUN  
AUGER OVER  
200 rpm

SPEED SELECTION CHART LAMINATE PULLEYS

		JOHN DEERE	CASE IH	AGCO	CLAAS
COMBINE DRIVE SHAFT SPEED (rpm)		500-680	500-670	630-850	540-740
AUGER SPEED RANGE (rpm)		150-200	150-200	150-200	140-190
ROTOR PULLEY	INPUT PULLEY	APPROXIMATE ROTOR SPEED (rpm)			
Ø 13"/72T	Ø 10"/56T	450-610	400-530	500-680	390-530
Ø 13"/72T	Ø 11.5"/64T	510-700	460-610	570-780	440-600
Ø 11.5"/64T	Ø 11.5"/64T	580-790	510-690	650-870	500-680
Ø 11.5"/64T	Ø 13"/72T	650-880	580-770	730-980	560-760
Ø 10"/56T	Ø 13"/72T	740-1000	660-890	830-1000	630-870

293182 01