

# Shelbourne

REYNOLDS

MAN-13200

## 120, 200 & 320 MODELS OPERATORS AND PARTS MANUAL



# CUBICLE BEDDER

Shelbourne Reynolds Engineering Ltd  
Stanton  
Bury St Edmunds  
Suffolk  
IP31 2AR  
England

Telephone: 01359 250415  
Fax: 01359 250464

Stores Direct : 01359 251231  
Stores Direct: 01359 252031

Issue 6 05/10/2023

[www.shelbourne.com](http://www.shelbourne.com)





# EC DECLARATION OF CONFORMITY

MANUFACTURERS ADDRESS :

SHELBOURNE REYNOLDS ENGINEERING LTD.  
SHEPHERDS GROVE INDUSTRIAL ESTATE,  
STANTON,  
BURY ST. EDMUNDS,  
SUFFOLK.  
IP31 2AR  
ENGLAND.

MACHINE SPECIFICATION :

MAKE :

**Cubbicle Bedder**

MODEL :

SERIAL NO.:

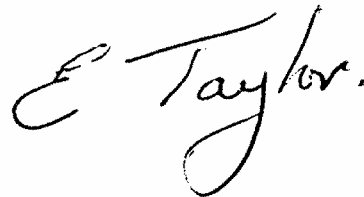
DIRECTIVES COMPLIED WITH :

MACHINERY DIRECTIVE 98/37/EC

APPLIED HARMONISED STANDARDS :

BS EN 292 PART1 & 2 : 1991  
BS EN 294 : 1992  
BS EN 349 : 1993

SHELBOURNE REYNOLDS SIGNATORY :



ERIC TAYLOR  
OPERATIONS DIRECTOR

PLACE :

**Stanton, England.**

DATE :



# **PARTS AND OPERATORS MANUAL**

## **CONTENTS**

<b>Section 1</b>	<b>INTRODUCTION</b>
1.1	Foreword
1.2	Improvements and changes
1.3	Service Parts
1.4	Machine Identification
1.5	Warranty
<b>Section 2</b>	<b>SAFETY PROCEDURES</b>
2.1	Accident prevention
2.2	Before starting the machine
2.3	The machine in use
2.4	Leaving the machine
2.5	Servicing the Cubicle Bedder
2.6	Machine attachment
<b>Section 3</b>	<b>SPECIFICATION AND DESCRIPTION</b>
3.1	Description
3.2	Intended use
3.3	Technical Specification
<b>Section 4</b>	<b>TRANSPORTATION</b>
<b>Section 5</b>	<b>PREPARATION FOR USE</b>
5.1	Checks
5.2	Attaching to tractor / handler
5.3	Removal from tractor / handler
<b>Section 6</b>	<b>OPERATION</b>
6.1	Metering plates
6.2	Side plates
6.3	Agitator tines
6.4	Loading the machine
6.5	Discharging the bedding material
6.6	Discharge rates
6.7	Spread distance and pattern
<b>Section 7</b>	<b>MAINTENANCE</b>
7.1	Lubrication
7.2	Belt tension
7.3	Storage
<b>Section 8</b>	<b>PARTS LISTINGS</b>

## SECTION 1

## INTRODUCTION

### 1.1 FOREWORD

This manual will assist the operator to set, operate and service the Shelbourne Reynolds Cubicle Bedder to produce safe and efficient operation. It should be read carefully before putting the machine to work. Later sections illustrate and list all relevant spare parts. This manual should be used in conjunction with the tractor / handler manufacturers manual.



### 1.2 IMPROVEMENTS AND CHANGES

Shelbourne Reynolds Engineering are continually improving their products to meet the farmers needs and therefore reserve the right to make improvements and changes when practical to do so, without incurring any obligation to make changes and additions to equipment which has been sold previously.



### 1.3 SERVICE PARTS

Use guaranteed and genuine Shelbourne Reynolds Engineering service parts on Shelbourne Reynolds machinery to ensure maximum life and best performance. These are available through your Shelbourne Reynolds Engineering dealer.

When ordering service parts always quote the model, serial number and machine number.

## 1.4 MACHINE IDENTIFICATION

The serial and machine numbers of the Cubicle Bedder are printed on a plate located on the front of the tub.

	
YEAR <input type="text"/>	WEIGHT TOTAL <input type="text" value="Kg"/>
FOR SPARES QUOTE BOTH	
MC No. <input type="text"/>	SERIAL No. <input type="text"/>
	SHELBOURNE REYNOLDS ENGINEERING LTD STANTON, SUFFOLK. IP31 2AR. ENGLAND

## 1.5 SHELBOURNE REYNOLDS ENGINEERING LTD - WARRANTY TERMS AND CONDITIONS TO THE PURCHASER

### GENERAL

1. This warranty will become available to you when you have paid for the equipment and returned, duly completed, the delivery and warranty registration forms. It will expire on the anniversary of purchase from the dealer. After that date Shelbourne Reynolds will have no further liability under this warranty to you except in respect of claims already notified. This warranty is not transferable and is available only to the original purchaser from our dealer. In the case of purchasers having leasing or similar arrangements the first user shall be deemed the original purchaser and you shall be deemed to have paid for the equipment.

### USE AND MAINTENANCE

2. To maintain the benefit of the warranty throughout the twelve month period you must have the machine serviced in accordance with our recommendations and use the machine properly. If on inspection the machine appears to have been either misused, overloaded, improperly operated, neglected, not properly maintained, altered or repaired without our consent this will invalidate the warranty. We shall have no further liability under it to you at all. (If you require any guidance as to use you should contact the dealer.)
3. Our liability under this warranty is dependent upon your making the equipment and facilities available, for inspection and testing.
4. In this warranty the expression, "defective product" means any part of the equipment you have purchased which shows evidence of a defect in the materials, design (due regard being given for the state of the art at the time we designed it) or Shelbourne Reynolds' workmanship. Wearing parts, such as belting, are excluded.

Parts not manufactured by Shelbourne Reynolds, for example tyres and alternators, are also excluded.

## **OUR OBLIGATIONS**

5. If you discover a defective product you should contact the dealer from whom your machine was purchased. The dealer will notify us of your claim. Our obligation will then be to either replace, or if we consider it appropriate, repair the defective product. Alternatively, we may arrange for our dealer to carry out this work. **YOU MUST NOTIFY THE DEALER OF THE DEFECT WITHIN SEVEN DAYS OF THE DAY ON WHICH IT IS DISCOVERED AND YOU MUST NOT USE THE EQUIPMENT AFTER DISCOVERY. FAILURE TO OBSERVE EITHER OF THESE OBLIGATIONS WILL INVALIDATE THE WARRANTY AS IS APPLIES TO THAT DEFECT.** Any defective products replaced must be returned to SRE for inspection.

## **NO ADMISSION**

6. On occasions we may, to preserve goodwill, replace parts even though they are not in our opinion defective. Accordingly, our agreeing to repair or replace a part cannot in any circumstance be deemed an admission that it was defective.

## **LIMITATIONS**

7. This warranty shall not apply to products made up in accordance with customer originated designs.
8. No warranty, condition or other term implied by statute or common law as to the merchantability or fitness for a particular purpose, is intended or given by this warranty. All such warranties which may apply between Shelbourne Reynolds and yourself are excluded to the fullest extent permitted by law.
9. In any case, except in respect of death or personal injury caused by our negligence, we shall not be liable to you by reason of any representation or implied warranty, condition or other term, or any duty at, law or under the express terms of any contract, for the consequential loss or damage (whether for loss or profit or otherwise and including delay in harvesting, loss of crops, expense incurred for labour, additional or substitute material, rental whatsoever and whether caused by our negligence, the negligence or our employees or agents or otherwise) which arises out of or in connection with the use of the goods by you.
10. Time of repair is not of the essence.
11. No person or persons are authorised to alter, modify or enlarge this warranty on behalf of Shelbourne Reynolds.
12. Shelbourne Reynolds shall not be liable for any failure to comply with any part of the warranty where such failure is due to circumstances beyond their reasonable control, including difficulty in obtaining materials or replacement parts.

## **CALL OUT CHARGES**

13. Shelbourne Reynolds and all dealers reserve the right to make a reasonable charge for call outs made at your request which do not turn out to relate to defective products.

## **YOUR STATUTORY RIGHTS ARE UNAFFECTED.**





## SECTION 2

## SAFETY PROCEDURES

### 2.1 ACCIDENT PREVENTION

The following safety instructions are applicable for all chapters of this manual.

Careful heed must be paid not only to the safety instructions contained in this operating manual, but also to the accident prevention regulations governing the operation of agricultural machinery.

Accident programmes can only prevent accidents with the co-operation of the persons responsible for the operation of the equipment.

For safety of yourself and others, operate equipment with care and do not take unnecessary risks which could cause an accident.

The tractor or prime mover manufacturer's operators manual safety precautions should be adhered to along with the following additional safety precautions listed when using a Cubicle Bedder

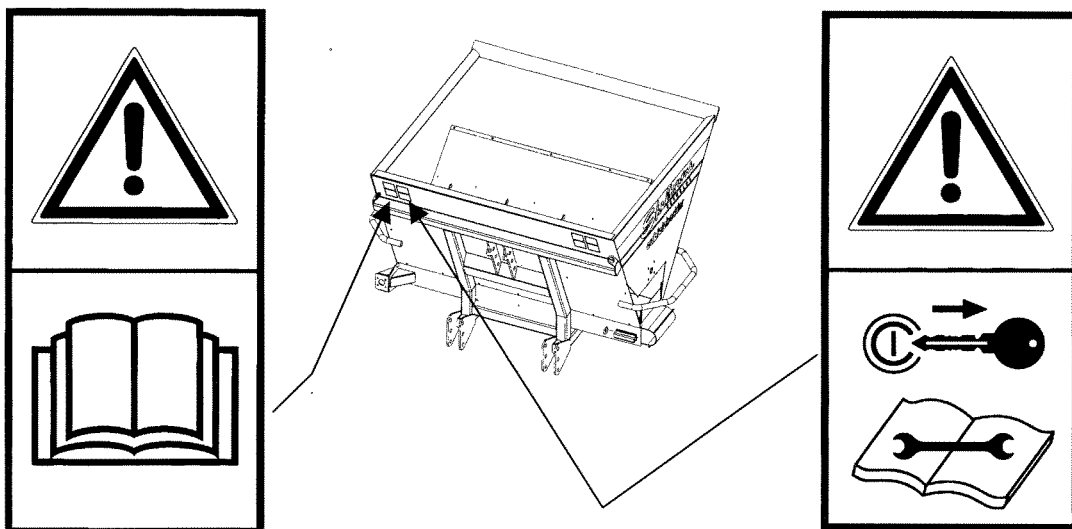
#### CAUTION



In addition to the following list, this symbol will appear throughout this manual whenever your safety is involved.

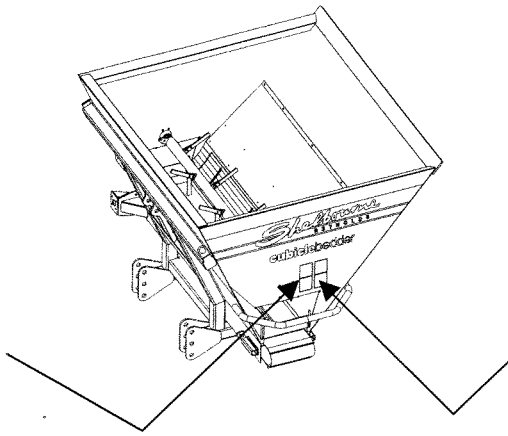
#### DANGER SYMBOLS

On the machine - the following symbols appear on the machine and are for your safety and the safety of other people. Ensure that you identify each symbol and understand it's warning.



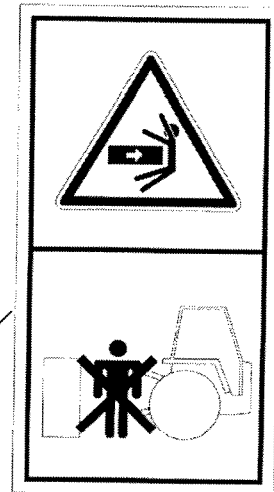
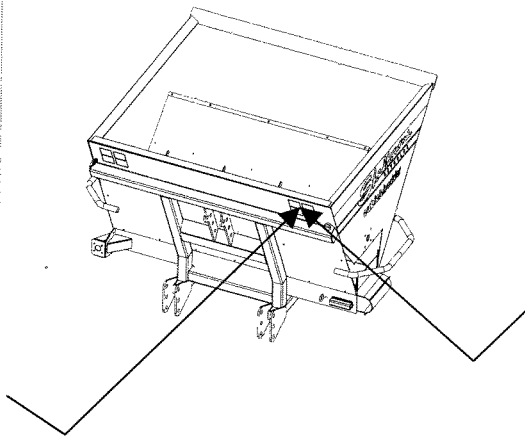
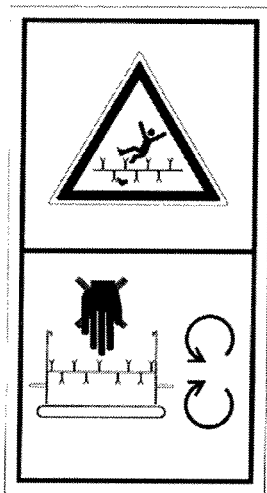
Carefully read the operating manual before handling the machine.

Stop the engine and remove the key from the tractor / handler before carrying out any work on the machine.



Thrown or flying objects. Keep a safe distance from Cubicle Bedder when machine is working

Risk of hand entanglement in conveyor. Keep a safe distance from Cubicle Bedder when machine is working.



Risk of entanglement in agitator. Do not reach into Cubicle Bedder tub whilst engine is running on tractor/handler

Risk of crushing of torso. Do not stand between Cubicle Bedder and tractor/handler



## GENERAL SAFETY

Please read all safety instructions contained in this operating manual with the utmost care and also observe all warning signs attached to the Cubicle Bedder. These warning signs must be kept in a legible condition and must be replaced if missing or damaged. This is especially the case when whole sections are replaced when making repairs. Warning signs are available from your dealer or importer.

Follow these instructions to prevent accidents. These instructions must also be made available to all other users. You are advised to refrain from any working methods which may be hazardous.

## PROPER USE

**Shelbourne Reynolds Cubicle Bedders** are based on state-of-the-art technology and are manufactured in accordance with recognised safety requirements. Nevertheless the use of the Cubicle Bedder does not preclude the risk of injury to the user or third parties and / or the risk of damage to the Cubicle Bedder itself or to other materials or items of equipment.

Always make sure that the **Shelbourne Reynolds Cubicle Bedder** is in a technically perfect condition and that it is used properly and for its intended purpose and entirely in accordance with the instructions given in this manual. Any malfunctions or defects which might affect the safe operation of the Cubicle Bedder must be immediately eliminated.

The **Shelbourne Reynolds Cubicle Bedder** must be used, maintained and repaired only by persons who are familiar with its working and have been made fully conversant with the risks involved.

OEM replacement parts and accessories from Shelbourne Reynolds have been specially designed for use with the **Shelbourne Reynolds Cubicle Bedder**. Any replacement parts and accessories not supplied by Shelbourne Reynolds have not been tested and approved by us. The installation and/or the use of non-Shelbourne Reynolds products may under certain circumstances have a negative influence on the given design features of your machine and may therefore adversely affect its safe and reliable operation and your safety. Shelbourne Reynolds cannot therefore be held liable for damage or injury caused by the use of non-OEM replacement parts or accessories.

The **Shelbourne Reynolds Cubicle Bedder** is intended for use on typical farms and to be employed in distributing bedding material. Any uses other than those for which the Cubicle Bedder is intended, such as transportation, will automatically exempt Shelbourne Reynolds or the supplier from its/his liability in respect of ensuing damage. Such cases of improper use will therefore be entirely at the user's own risk.

All relevant accident prevention regulations, as well as other generally acknowledged health and safety regulations and road traffic regulations must be strictly observed.

Improper use also comprises failure to observe the instructions given in this operating manual and the manufacturer's maintenance and servicing requirements.



## OPERATIONAL SAFETY

The **Shelbourne Reynolds Cubicle Bedder** must not be put into operation until the user has been given proper initial instructions either by the dealer or by one of Shelbourne Reynolds' representatives or employees.

The **Shelbourne Reynolds Cubicle Bedder** may be used only if all safety devices, e.g. detachable guards, are fitted and in proper working order.

Nuts and bolts should be checked at regular intervals and tightened if necessary.

In the event of a malfunction, immediately cease operation and secure the **Shelbourne Reynolds Cubicle Bedder** in its stationary position. Malfunctions must be eliminated immediately.

### No liability for consequential damage

Even though your **Shelbourne Reynolds Cubicle Bedder** has been manufactured with the utmost care and you are using it properly, fluctuations in performance may still occur.

It is the duty of the operator / user to ensure that foreign objects, e.g. stones, metal objects etc. are not allowed to enter the Cubicle Bedder. Failure to observe this may result in damage to the machine and / or injury to the operator / user

Any claims for damages not directly incurred by the **Shelbourne Reynolds Cubicle Bedder** cannot be accepted. By the same token, Shelbourne Reynolds cannot be held liable for any consequential damage resulting from incorrect use of the Cubicle Bedder.



## ROAD SAFETY

Road traffic regulations must be observed when taking the **Shelbourne Reynolds Cubicle Bedder** on roads, paths and other public places. The Cubicle Bedder must be in a road-worthy condition.

Observe the maximum permissible width for road transport and fit all necessary warning signs and guards.

Fully secure guards and covers so that they cannot cause injury or damage to other users of the public place.

### When coupling the Shelbourne Reynolds Cubicle Bedder to the tractor / handler.

The work of coupling and uncoupling of the Cubicle Bedder involves a high risk of injury. Follow the procedure described further through this manual for Cubicle Bedder attachment and detachment. See Section 5.2

Check that the combined weight of the Cubicle Bedder and the heaviest load of bedding material does not exceed the manufacturers recommended safe loading of axle, wheels and tyres.

Ensure that the machine is parked on even level ground.  
Slowly drive the tractor / handler towards the Cubicle Bedder – always ensure that there are no other persons in the vicinity of the machine and tractor / handler.  
Connect the Cubicle Bedder to the tractor linkage using only the method recommended in the tractor's operator manual.  
Connect the Cubicle Bedder to the handler using manufacturer approved bracket in the manner recommended in the handler operators manual.  
If Brackets are to be welded to the Loader Frame it is absolutely vital that the welding is carried out by a Professional Welder.

### **When using the hydraulic system**

Do not connect the hydraulic hoses to the tractor / handler hydraulic system until you have made sure that the system is at zero pressure on both the tractor / handler and the Cubicle Bedder.

The hydraulic system generates extremely high pressures. All piping, hoses and connections must therefore be checked regularly for leakage and visible external damage. Use proper and thorough means of searching for leakage and repair all damage immediately. Spurting hydraulic oil can cause injuries and fires. Seek medical advice immediately in the event of injury.



### **PRECAUTIONS**

#### **2.2 BEFORE STARTING THE MACHINE**

1. Read the manual thoroughly.
2. Check that all guards are properly secured.
3. Ensure that no person is working on or inside the machine.
4. Check that all observers are clear of the machine. Warn bystanders by sounding the horn several times.

#### **2.3 THE MACHINE IN USE**

5. Do not permit anyone other than the operator to ride on the tractor / handler.
6. Always stop the engine, remove the key and apply handbrake before removing or opening any guards or clearing a blockage.
7. Do not go under the Cubicle Bedder unless it is securely blocked
8. NEVER go near the machine whilst the conveyor is running.
9. Always replace all guards after making any adjustments or lubricating the machine. Replace or repair any damaged or missing guards immediately.
10. Do not work around the machine in loose clothing that might get caught in moving parts.
11. Keep hands away from moving parts.
12. Keep children away from and off the machine at all times.

## **2.4 LEAVING THE MACHINE**

13. Park the machine on reasonably level ground.
14. Apply the parking brake.
15. Lower the Cubicle Bedder to the ground.
16. Stop the engine and remove ignition key.

## **2.5 SERVICING THE CUBICLE BEDDER**

17. Ensure that the Cubicle Bedder is on the ground or if in the raised position, that it is securely blocked
18. Stop engine, remove the key and apply handbrake before performing any adjustments or lubrication and before opening or removing any guard.
19. Always re-install all safety guards on completion of servicing.

## **2.6 MACHINE ATTACHMENT**

20. Follow the procedure described further through this manual for Cubicle Bedder attachment and detachment. See Section 5.2/5.3

## SECTION 3

## SPECIFICATION & DESCRIPTION

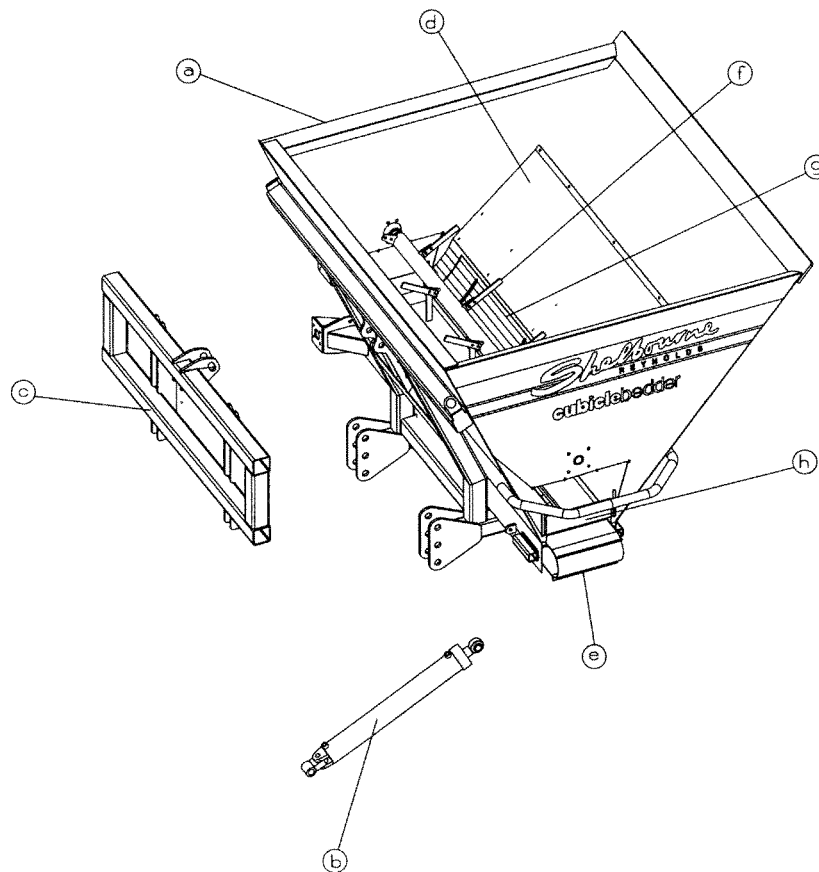
### 3.1 DESCRIPTION

The machine consists of a tub (a) which is used to hold the bedding material. The tub is fitted to the tractor / handler and can either be loaded manually or used to scoop up bulk material if fitted with a hydraulic top link (b) or loader frame (c).

Bolted inside the tub are fill in sheets (d) which alter the internal shape of the tub

Positioned underneath the tub is a conveyor (e) which is driven by a hydraulic motor and is used to discharge the bedding material to either the left or right hand side of the machine. A horizontal rotating agitator (f) is used to loosen the bedding material in the tub ensuring that the material flows through the metering plates onto the conveyor.

The metering plates (g) consist of two adjustable slides which fit inside the tub and regulate the amount of material which flows onto the belt by adjusting the gap between them. On the side of the tub are two adjustable side plates (h) under which the conveyor passes.

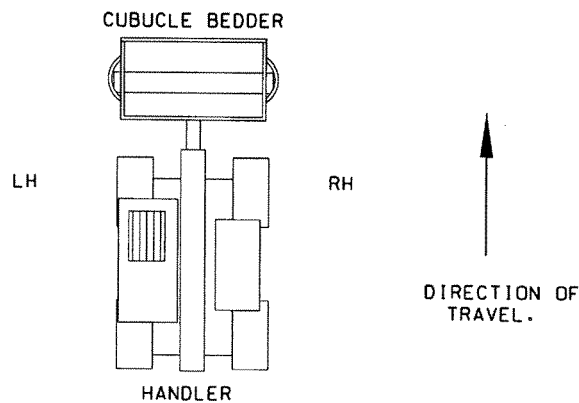


The machine can either be fitted to the three point linkage of the machine using a standard top link where by it must be loaded manually or from an overhead hopper. Alternatively a hydraulic top link can be supplied which alters the angle of the tub allowing it scoop bedding material from a bulk heap on the floor.

A loader frame can also be supplied onto which the correct brackets can be fitted this allows the Cubicle Bedder to be fitted to a front end loader or handler



Right and left of the machine is termed in the manual as viewed from the drivers seat with the Cubicle Bedder fitted to the front of a handler.

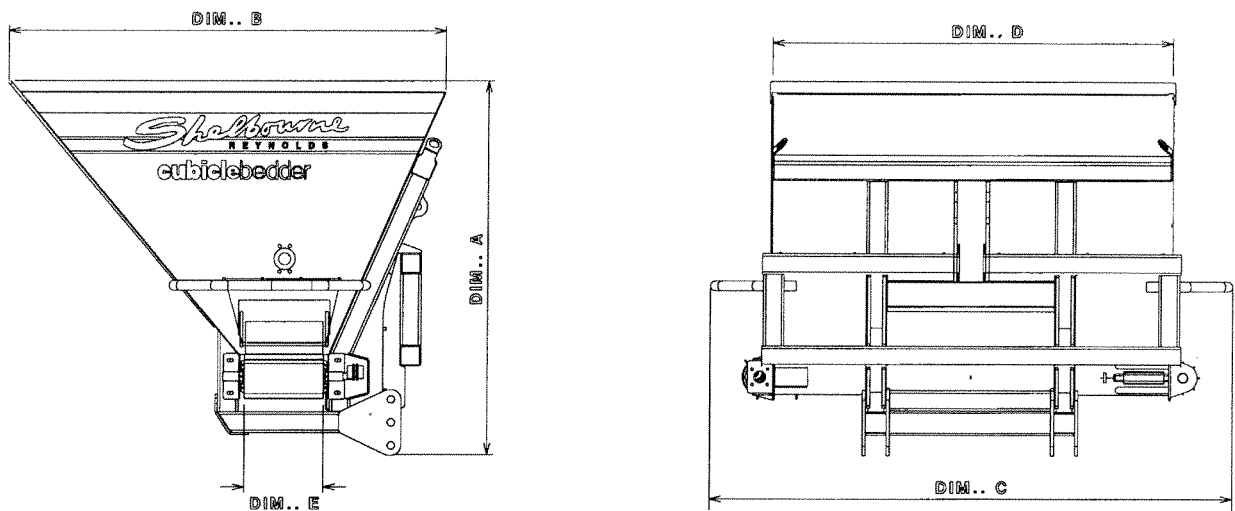


### 3.2 INTENDED USE

The Cubicle Bedder is intended to be used on typical farms for transporting and discharging suitable animal bedding materials into the animal bedding area, usually cubicle beds.

### 3.3 TECHNICAL SPECIFICATION

Sizes and weights are as follows : (all dimensions and weights are approximate)



	<b>120</b>	<b>200</b>	<b>320</b>
<b>Machine Capacity</b>	1.40m <sup>3</sup>	1.70m <sup>3</sup>	2.20m <sup>3</sup>
<b>Overall Height (A)</b>	1422mm	1422mm	1574mm
<b>Overall Depth (B)</b>	1670mm	1670mm	1864mm
<b>Overall Width (C)</b>	1996mm	2300mm	2300mm
<b>Tub Width (D)</b>	1524mm	1830mm	1830mm
<b>Width of Discharge Belt (E)</b>	0.3m	0.3m	0.3m
<b>Tractor Size</b>	Min 50hp	Min 50hp	Min 50hp
<b>Min Hydraulic Flow *</b>	30-35 litres/min	30-35 litres/min	30-35 litres/min
<b>Min Hydraulic Pressure</b>	125 bar	125 bar	125 bar
<b>Weight</b>	495kg	550kg	600kg

\* - Lower flow rates can be used with changes to machine, please consult Shelbourne Reynolds

## **SECTION 4**

### **TRANSPORTATION**

To prevent damage to the Cubicle Bedder the machine should only be moved by one of the following methods:

Attaching to a tractor

Attaching to handler or front end loader

Using a suitable support pallet

By slinging the tub using the four designated sling points for overhead lifting.



## **SECTION 5**

## **PREPARATION FOR USE**

### **5.1 CHECKS**

All assembly work and pre delivery checks should have been undertaken by your dealer. As a precaution, before using check:

- 1 There are no foreign objects in the tub
- 2 There are suitable auxiliary hydraulic outlets on your tractor or loader
- 3 The correct manufacturer approved brackets have been fitted in a suitable manner to the loader frame (if fitted)

### **5.2 ATTACHMENT TO THE TRACTOR / HANDLER**

The machine is provided with provision for it to be carried on the three-point linkage when using a standard top link or hydraulic top link. Alternatively the Cubicle Bedder can be fitted to a Handler when a loader frame is specified.

#### **STANDARD TOP LINK**

Reverse the tractor slowly to the machine and connect the lower links. Adjust the top link length to enable it to be attached to the machine.

Set the machine at the desired working height and adjust the top link to such a position that the conveyor is parallel with the ground.

Adjust the check chains so that there is no sideways sway and the machine sits centrally to the tractor.

There are multiple hole positions for both the lower and top links which enable the machine to be fitted to most tractors, ensure the correct hole positions are chosen to suit the tractor being used.

Once the machine has been attached and the linkage adjusted, the two hoses for the conveyor and agitator drive must be connected to the tractor auxiliary hydraulic outlet. This requires one double acting service with a minimum flow of 30-35 litres/min at 125 bar pressure.

#### **HYDRAULIC TOP LINK**

When using the hydraulic top link option reverse the tractor to the machine in the usual manner and attach the lower links to the lowest set of holes on the Cubicle Bedder.

Attach the hydraulic top link to the tractor, the bolted clevis end fits onto the tractor.

Connect the cylinder hydraulic pipes into the tractor auxiliary outlet, ideally this requires a second double acting service. Extend the cylinder to locate the swivel ball end close to the top link position hole on the machine. Adjust the swivel end accordingly to allow the top link pin to be fitted, fit the top link pin and spacers and adjust the locking collar up to the cylinder rod. Ensure that the swivel end is not unwound too far and at least 50 mm of thread is still within the cylinder.

Retract the hydraulic top link and set the machine at the required working height and ensure the conveyor is parallel with the ground.

Adjust the check chains so that there is no sideways sway and the machine sits centrally to the tractor.

Again there are multiple holes positions for both the lower and top links, carefully select the correct hole position to enable the machine to be levelled. Now extend the hydraulic cylinder until the tub blade touches the ground to enable bedding material to be scooped up. The linkage position holes may need to be changed to allow the machine to work correctly.

Once the machine has been attached and the linkage adjusted the two hoses for the conveyor and agitator drive must be connected to the tractor auxiliary hydraulic outlet.

## **LOADER FRAME**

When fitting the Cubicle Bedder to a handler or front end loader, ensure that manufacturer approved brackets have been correctly fitted to the loader frame.

Attach the loader frame to the three point linkage on the Cubicle Bedder, slowly drive the tractor or handler towards the Cubicle Bedder and engage and lock the brackets, lift the machine to the desired working height and ensure the conveyor is parallel with the ground.

Connect the conveyor and agitator drive to the loader auxiliary hydraulic outlet.

## **5.3 REMOVAL FROM THE TRACTOR / HANDLER**

### **STANDARD TOP LINK**

Select a firm level site to park the machine. Lower the machine to the ground and adjust the top link so that the machine is flat on the ground and there is no pressure on the top link.

Disconnect the conveyor and agitator hoses from the tractor, replacing the dust caps. Disconnect the top link from the Cubicle Bedder and then remove the lower link pins.

Drive the tractor away from the Cubicle Bedder and replace the pins correctly.

### **HYDRAULIC TOP LINK**

Select a firm level site to park the machine. Extend the top link cylinder so that the tub blade is touching the ground and the machine is sitting level on the ground taking the pressure off of the top link.

Disconnect the conveyor and agitator hoses from the tractor, replacing the dust caps. Disconnect the hydraulic top link hoses from the tractor and remove the pins from both the tractor and machine end allowing the hydraulic top link to be removed altogether. Remove the lower link pins.

Drive the tractor away from the Cubicle Bedder and replace the pins correctly.

## **LOADER FRAME**

Select a firm level site to park the machine. Remove conveyor and agitator hose from the loader and replace dust caps. Lower the Cubicle Bedder to the ground and disconnect the machine from the loader as stated in its Operators manual.

Drive away from the Cubicle Bedder leaving the loader frame attached to the machine.





**NEVER USE THE CUBICLE BEDDER UNLESS ALL GUARDS ARE SECURLY FITTED.**

### 6.1 METERING PLATES

Before filling the machine with bedding material the metering plate must be adjusted to provide a suitable gap in order to obtain the desired discharge rate. The two plates fit inside the tub and can be moved by slackening three bolts on each using a 17mm spanner. The size of the gap will determine the rate at which the material flows to the belt and will vary for different forms of material. The ideal gap will be established through fine tuning however the table below acts as a starting guide.

BEDDING MATERIAL	GAP BETWEEN METERING PLATES
FINE SAWDUST	20-40mm
COARSE SAWDUST	30-60mm
WOOD SHAVINGS	50-150mm
LONG MATERIAL/CHOPPED STRAW	150-300mm
SAND (120 MODEL ONLY)	50-75mm

### 6.2 SIDE PLATES

Before filling the machine with bedding material ensure the two adjustable side plates are fully raised and secured using the wing nuts. These plates affect the spread pattern of the bedding material, it is best to have these in the up most raised position to start with and adjust accordingly to achieve the desired spread pattern.

### 6.3 AGITATOR TINES

The machine is fitted as standard with a full set of cranked agitator tines, these may need adjusting or removing depending on the bedding product to be used

The standard factory set up will work well in light fine products but some tines may need removing or shortening in longer more course products, the table below acts as a guide.

BEDDING MATERIAL	TINE CONFIGURATION
FINE SAWDUST	FULL SET OF PAIRED CRANKED TINES
COARSE SAWDUST	FULL SET OF PAIRED CRANKED TINES
WOOD SHAVINGS	FULL SET OF PAIRED CRANKED TINES
LONG MATERIAL CHOPPED STRAW	REPLACE PAIRED CRANK WITH SHORT SINGLE TINES (Pt No. 260045 03). REDUCE TINE NUMBERS IF DRIVE THEN STALLS
SAND (120 MODEL ONLY)	REMOVE END TINES AND CHANGE SOME PAIRS TO SINGLE TINES IF DRIVE STALLS



## 6.4 LOADING THE MACHINE

Before loading the machine activate the auxiliary hydraulic supply which controls the conveyor and agitator to ensure that all components are turning correctly and freely. Activating the auxiliary control in the other direction will change the direction of travel of both the conveyor and agitator. Familiarise yourself with the controls.

Machines that are fitted with a standard top link can only be filled manually or by an overhead hopper, in either case fill the machine with bedding material until the tub is full.



**\* Note when filling with sand, (120 Model Only) only half fill the tub \***

Machines fitted with a hydraulic top link or fitted to a loader or handler can be filled from a bulk pile of bedding material on the ground.

First lower the machine to the ground and extend the hydraulic top link or crowd the loader forwards until the tub blade is touching the ground, the machine may need to be lifted during this process to allow it to pivot.

Push the Cubicle Bedder into the pile until the tub is full.

Retract the hydraulic cylinder or crowd the loader back until the conveyor is parallel with the ground, the machine may need to be lowered during this process to allow it to pivot.

Raise the machine to a suitable height for transport, keep the machine as low to the ground as practically possible to improve the stability during transport.

## 6.5 DISCHARGING THE BEDDING MATERIAL

Once you are ready to unload, adjust the machine height to get the desired discharge distance and ensure the conveyor is parallel to the ground.

Activate the tractor / handler auxiliary hydraulic service to commence the discharge. Both the conveyor and agitator will work together.

On start up of the conveyor and agitator, drive forwards allowing bedding material to be discharged.

## 6.6 DISCHARGE RATE

The discharge rate is governed by a number of factors, the adjustment of the metering plates, as mentioned in section 6.1, the forward speed of the tractor / handler and the oil flow rate to the conveyor and agitator. These three factors need to be adjusted to obtain the desired discharge rate for the bedding material being used.

## 6.7 SPREAD DISTANCE AND PATTERN

The distance which bedding material can be thrown is dependant on the speed at which the conveyor runs and the height at which the machine is set. Adjust these factors until the desired spread distance is achieved.

The spread pattern is affected by the forward speed and the position of the of the adjustable side plates. Lowering the side plates will cause them to spread the bedding material over the width of the belt. Adjust the forward speed and side plates to achieve the desired spread pattern.



## SECTION 7

## MAINTENANCE AND STORAGE

The Cubicle Bedder is designed to be a low maintenance machine. The only required maintenance is regular lubrication and belt tensioning.



**NEVER CARRY OUT ANY ADJUSTMENTS OR MAINTENANCE WHEN THE TRACTOR OR LOADER ENGINE IS RUNNING**

### 7.1 LUBRICATION

Each machine has five greasable bearings. Lubricate all five bearings before using the machine for the first time and every 20 hours of use thereafter.

### 7.2 BELT TENSIONING

If the belt becomes loose or is rubbing against one side of the tub, using a 19mm spanner follow the steps below:

- 1 With the belt stationary tighten the belt by moving the adjusters an equal amount out from the machine
- 2 Start the tractor / handler and run the belt with no load to its full speed
- 3 If the belt begins to track to one side of the roller, stop the conveyor and switch of the tractor and adjust the bearing that the belt is tracking towards.
- 4 Start the tractor / handler and run the conveyor.
- 5 Repeat steps 3 and 4 until the belt is riding true to the pulley.
- 6 Once the belt is centred reverse the direction of travel of the conveyor. If the belt again runs off centre split the difference of run out between the two directions of travel.

### 7.3 STORAGE

- 1 Clean the machine thoroughly
- 2 Apply a rust inhibitor or oil to shiny tub surfaces, shafts, chains, sprockets, bearings and motors
- 3 Grease all bearings
- 4 Run machine to circulate grease and remove any water
- 5 Slacken off belt tensioners
- 6 Store under cover



**SECTION 8:**

**PARTS LISTING**

**CUBICLE BEDDER PARTS MANUAL**

Machine Identification

The Cubicle Bedder machine and serial identification numbers are printed on a plate located on the front of the tub.

Record serial, machine and any kit option numbers in the space below ;

CUBICLE BEDDER SERIAL NUMBER \_\_\_\_\_

CUBICLE BEDDER MACHINE NUMBER \_\_\_\_\_

OTHER KIT OPTIONS \_\_\_\_\_

\_\_\_\_\_

\_\_\_\_\_

Ordering Spare Parts

To ensure that you order the correct part from your SRE dealer please use the following procedure.

**ALWAYS QUOTE THE MACHINE AND SERIAL NUMBERS WHEN ORDERING.**

Refer to the first page of this parts list section (machine assemblies), listing all the sub assemblies.

The appropriate assemblies part number (in the top left corner) will match the machine number from the Cubicle Bedder identification plate.

Use the following sub assembly numbers and descriptions to find the area of the machine that your part is required, i.e. if you need a part which is fitted to the agitator, your part will be in the agitator assembly parts list.

Having decided which sub-assembly your part should be under, use the number beside that sub-assembly description, (which will begin with 2690\_\_ \_\_), to find the parts listing of the sub-assembly further on in the manual. The number will be printed in the top left hand corner, the sub-assemblies are in numerical order.

Having found the correct parts list, you will find the corresponding drawing by either looking at the facing page or progressing through the manual to the next drawing.

The drawings indicate the components by item numbers which you will find are repeated in the left hand side of your parts listing, and therefore referring to the correct part.



# List Of Kit Numbers

269901 01	Cubicle Bedder 120	34
269901 02	Cubicle Bedder 200	36
269901 03	Cubicle Bedder 320	38
269001 01	Tub Sub Assembly 120	40
269001 02	Tub Sub Assembly 200	42
269001 03	Tub Sub Assembly 320	44
269002 01	Agitator Assembly 120	46
269002 02	Agitator Assembly 200 & 320	48
269003 01	Tub Sheets 120	50
269003 02	Tub Sheets 200 & 320	52
KIT-26001	Handler Frame Kit	54
KIT-26002	Hydraulic Top Link Cylinder Kit	56
KIT-26003	A-Frame Kit	58

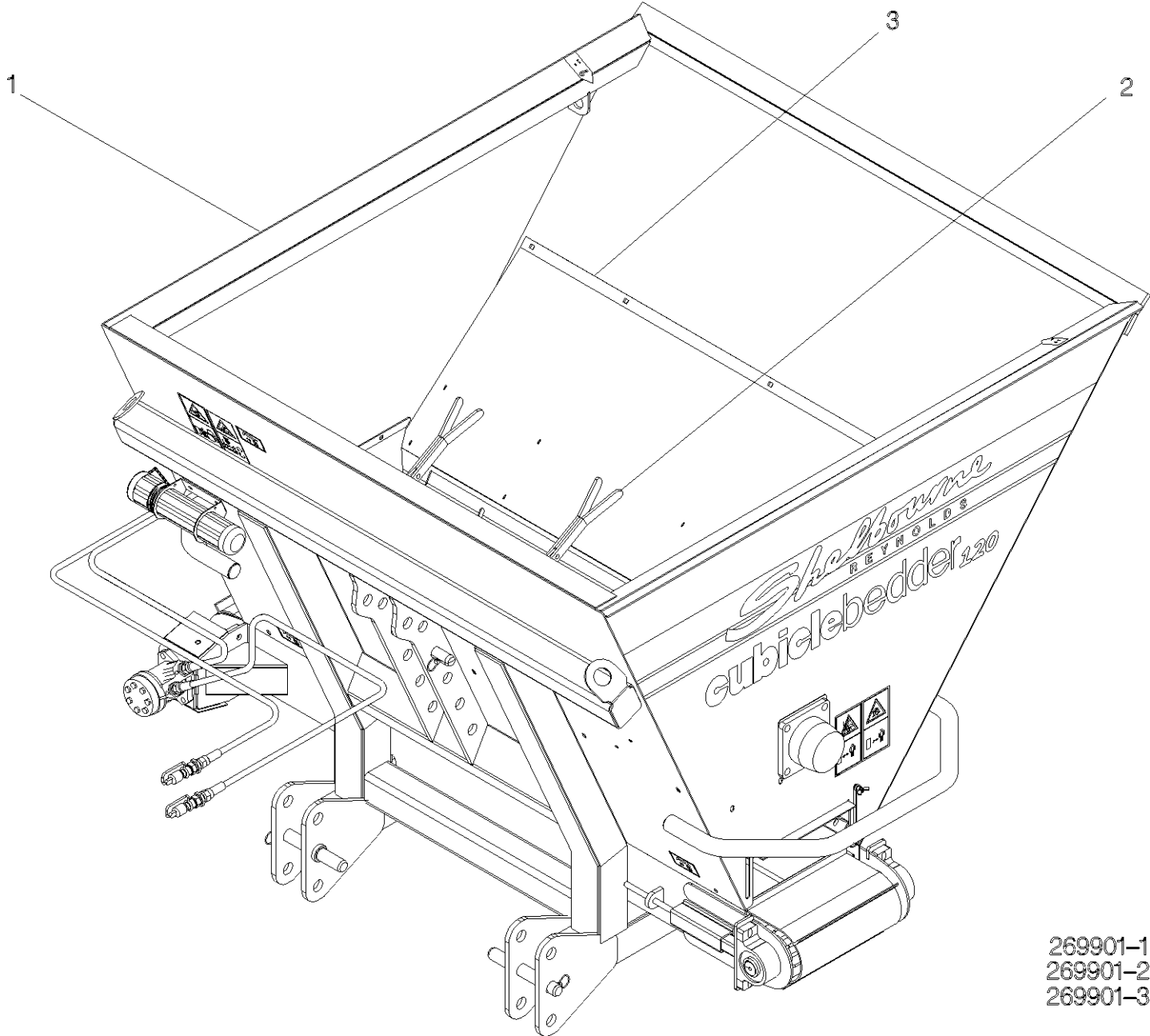




# Shelbourne Reynolds Engineering Limited

ASSY NUMBER: 269901 01				ASSY DESCRIPTION: CUBICLE BEDDER 120			
ITEM	PART NO	DESCRIPTION	QTY	ITEM	PART NO	DESCRIPTION	QTY
1	269001 01	TUB SUB ASSY 120	1				
2	269002 01	AGITATOR ASSY 120	1				
3	269003 01	TUB SHEETS 120	1				

Shelbourne Reynolds Engineering Limited

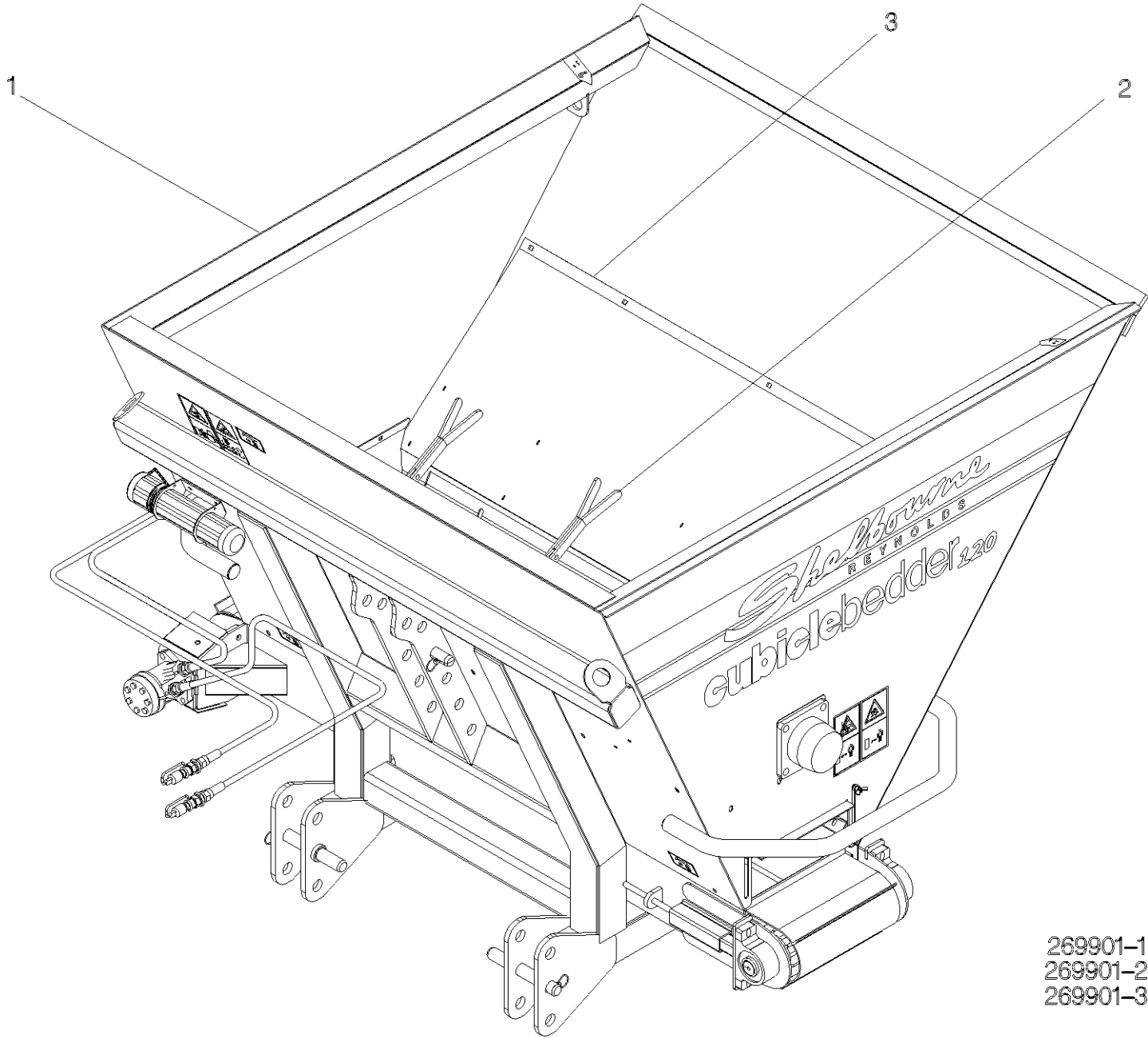


269901-1  
269901-2  
269901-3

## Shelbourne Reynolds Engineering Limited

ASSY NUMBER: 269901 02				ASSY DESCRIPTION: CUBICLE BEDDER 200			
ITEM	PART NO	DESCRIPTION	QTY	ITEM	PART NO	DESCRIPTION	QTY
1	269001 02	TUB SUB ASSY 200	1				
2	269002 02	AGITATOR ASSY 200 & 320	1				
3	269003 02	TUB SHEETS 200 & 320	1				

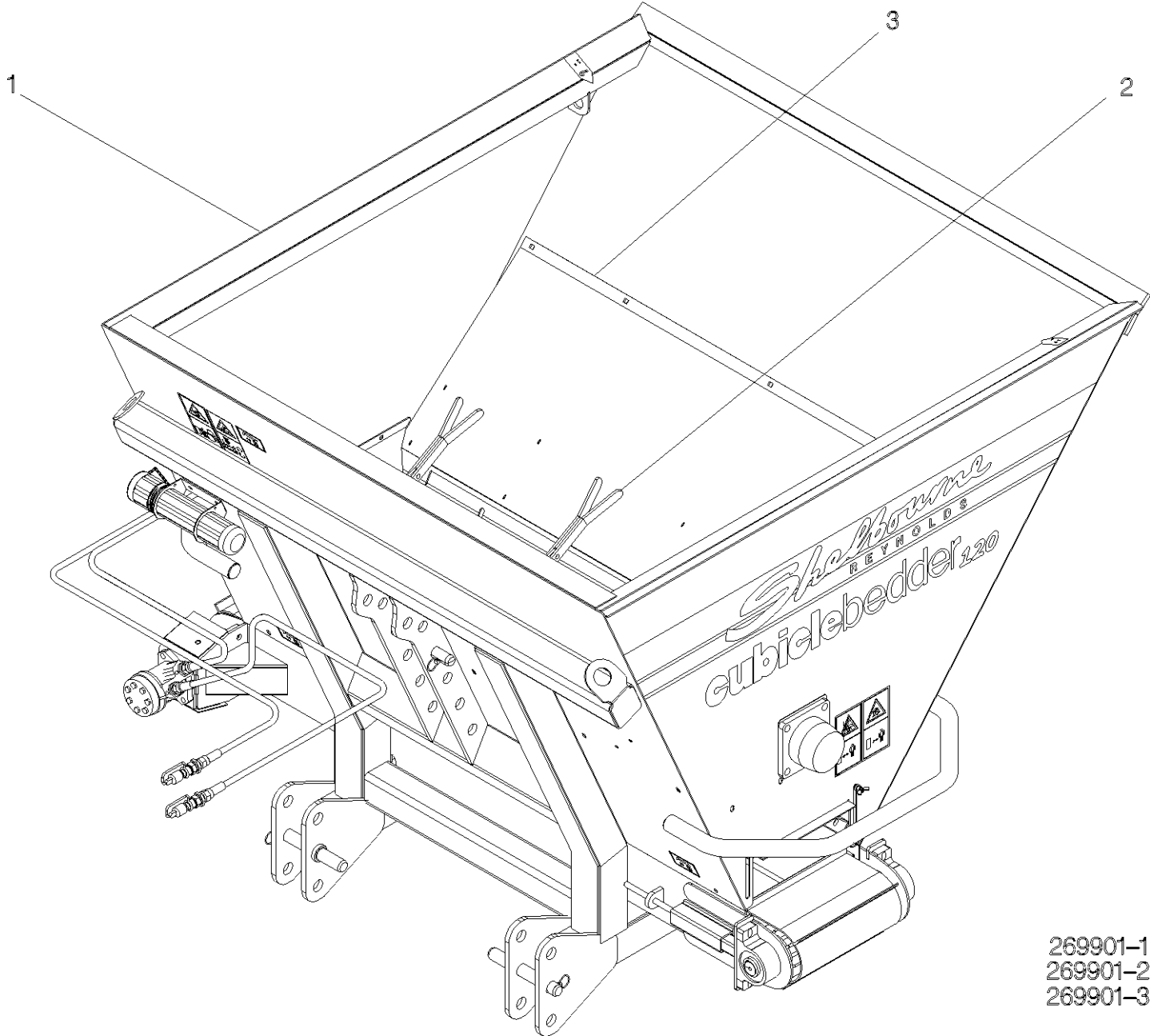
Shelbourne Reynolds Engineering Limited



## Shelbourne Reynolds Engineering Limited

ASSY NUMBER: 269901 03				ASSY DESCRIPTION: CUBICLE BEDDER 320			
ITEM	PART NO	DESCRIPTION	QTY	ITEM	PART NO	DESCRIPTION	QTY
1	269001 03	TUB SUB ASSY 320	1				
2	269002 02	AGITATOR ASSY 200 & 320	1				
3	269003 02	TUB SHEETS 200 & 320	1				

Shelbourne Reynolds Engineering Limited



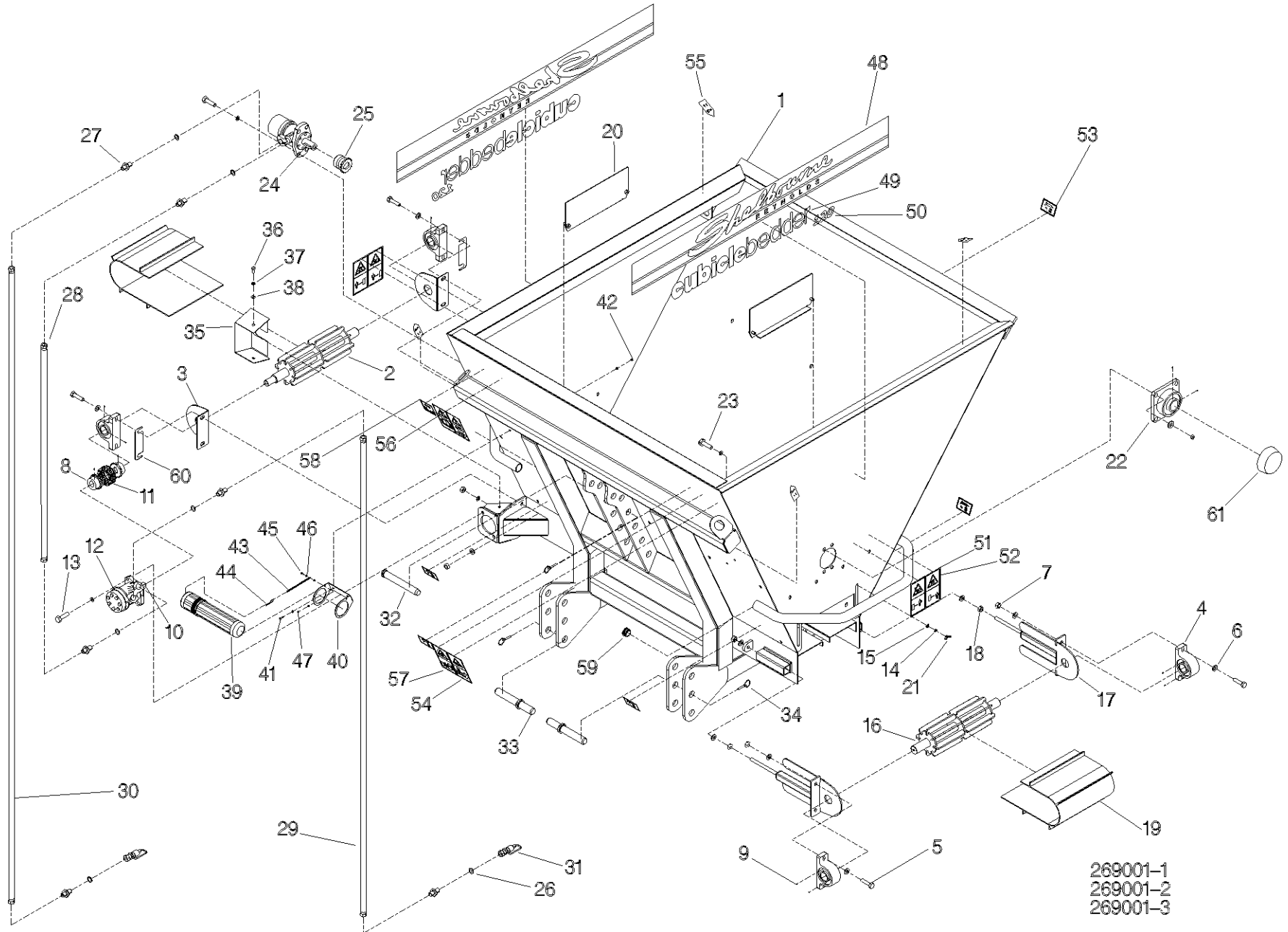
269901-1  
269901-2  
269901-3

## Shelbourne Reynolds Engineering Limited

ASSY NUMBER: 269001 01				ASSY DESCRIPTION: TUB SUB ASSY 120			
ITEM	PART NO	DESCRIPTION	QTY	ITEM	PART NO	DESCRIPTION	QTY
1	260004 01	TUB W/A CB120	1	33	260069 01	LOWER LINK PIN CAT II	2
2	260025 01	CONVEYOR DRIVE ROLLER	1	34	20539001	LYNCH PIN	3
3	260035 01	GUARD PLATE	2	35	260054 01	COUPLING GUARD	1
4	BRG-23555	BEARING	4	36	HSS-0140	BOLT	2
5	HSS-0260	SETSCREW	8	37	WSH-0058	SPRING WASHER	2
6	WSH-0018	PLAIN WASHER	40	38	WSH-0012	PLAIN WASHER FORM A	6
7	NUT-0269	NUT	18	39	WDA-00025	CANNISTER FOR MANUALS	1
8	260030 03	SPROCKET 25 ID KEYWAY	2	40	194364 01	CANNISTER BRACKET	1
9	SCW-4530	GRUBSCREW	6	41	HSS-0145	BOLT	2
10	K0807032	KEY PARALLEL	1	42	NUT-0263	NYLOC NUT	2
11	CHN-01380	CHAIN 1/2" PITCH DUPLEX	2	43	CHN-0145	BLACK JAPANNED	0.17
11A	CHN-01300	JOINER (SPARES)		44	CLP-00103	R CLIP	1
12	MOTH04001	HYDRAULIC CONVEYOR	1	45	HSS-0086	SET SCREW	1
OR	MOTH03500	MOTOR CONVEYOR		46	WSH-0009	PLAIN WASHER FORM A	2
OR	MOTH02500	MOTOR CONVEYOR		47	NUT-0260	NYLOC NUT	1
12A	HMS-	SEAL KIT SPARES		48	191981 01	LOGO SHELBOURNE REYNOLDS	2
12B	K0807032	KEY (SPARES)		49	260058 01	TRANSFER-CUBICLEBEDDE	2
13	BLTA12290	HEX.HEAD BOLT	2	50	260059 01	TRANSFER - 120	2
14	WSH-0061	SPRING WASHER	4	51	260061 01	TRANSFER-SAFE DISTANC	2
15	WSH-0015	PLAIN WASHER	4	52	260062 01	TRANSFER-HAND ENTANGL	2
16	260025 02	CONVEYOR IDLER ROLLER	1	53	127075 16	50 HRS GREASE TRANF	5
17	260036 01	ADJUSTER/ BEARING MTG	2	54	260063 01	TRANSFER-DO NOT ENTER	1
18	NUT-0170	PLAIN NUT PLATED	4	55	190702 04	SLING POINT TRANSFER	4
19	260048 01	CONV.BELT-120	1	56	TNF-0011	TRANSFER BLOCK	1
19A	260048 03	JOINING PIN (SPARES)		57	260060 01	TRANSFER-STAY CLEAR	1
20	260040 01	SIDE DOOR (ADJUSTABLE)	2	58	800212 01	TRANSFER-CHECK CHAIN	1
21	NUT-0210	WINGNUT	4	59	PTF-00134	PLASTIC CAP INSERT	4
22	BRG-23545	BEARING	1	60	260067 01	BEARING SHIM	A/R
23	HSS-0250	SET SCREW	8	61	BRG-93600	SELF LUBE PROTECTOR CAP	4
24	MOTH38941	MOTOR, AGITATOR	1				
24A	HMS-	SEAL KIT (SPARES)					
24B	K1008045	KEY (SPARES)					
25	260108 01	MOTOR SPROCKET	1				
26	WSH-1015	DOWTY WASHER 1/2"	6				
27	HMA-0067	ADAPTOR MALE/MALE	6				
28	HHAF08105	HYDRAULIC HOSE ASSY	1				
29	HHAF18305	HYDRAULIC HOSE ASSY	1				
30	HHAF24405	HYDRAULIC HOSE ASSY	1				
31	COU-0162	QUICK RELEASE COUPLING	2				
32	800198 02	TOP LINK PIN CATII	1				



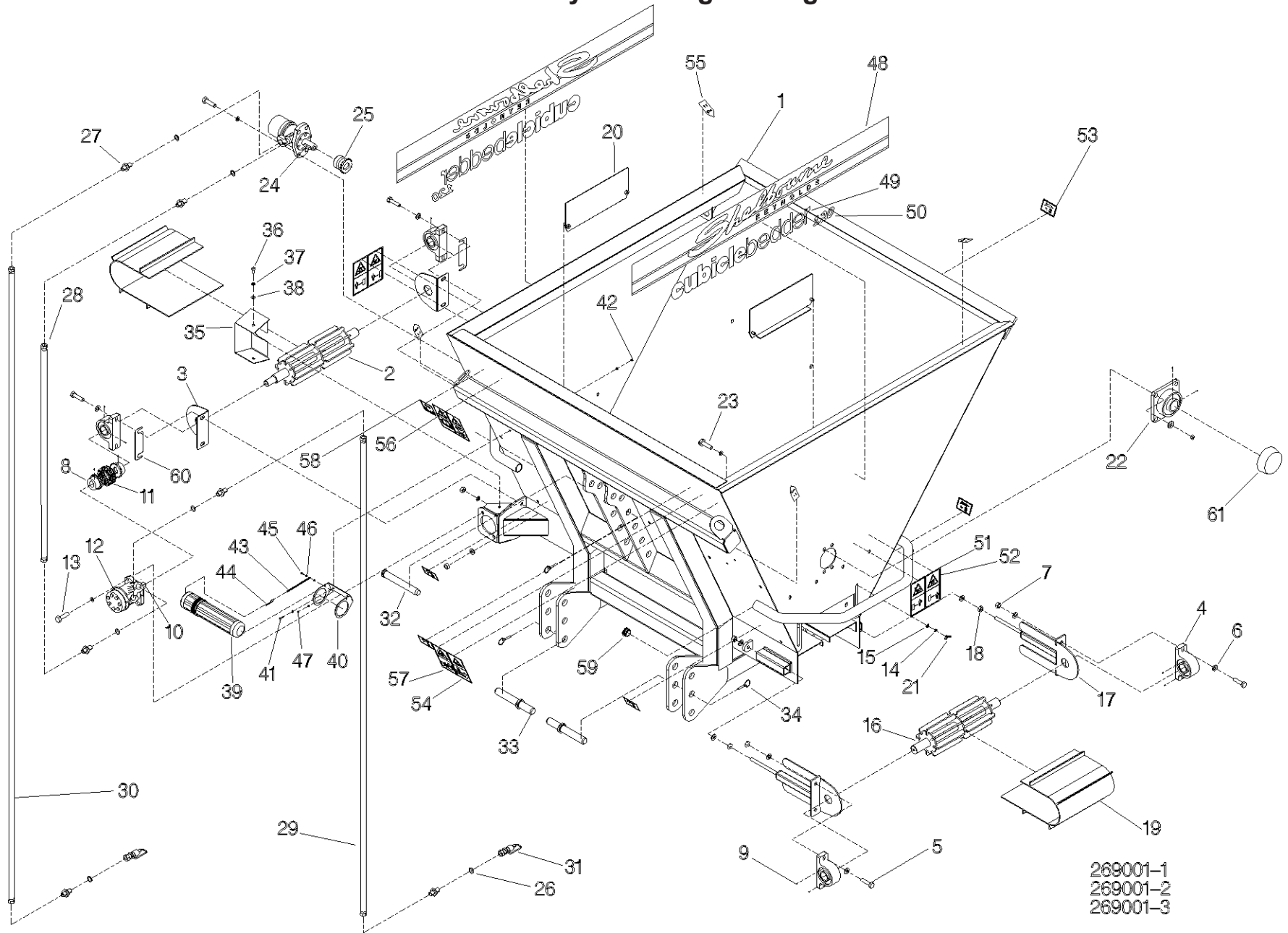
# Shelbourne Reynolds Engineering Limited



## Shelbourne Reynolds Engineering Limited

ASSY NUMBER: 269001 02				ASSY DESCRIPTION: TUB SUB ASSY 200			
ITEM	PART NO	DESCRIPTION	QTY	ITEM	PART NO	DESCRIPTION	QTY
1	260004 02	TUB W/A CB200	1	33	260069 01	LOWER LINK PIN CAT II	2
2	260025 01	CONVEYOR DRIVE ROLLER	1	34	20539001	LYNCH PIN	3
3	260035 01	GUARD PLATE	2	35	260054 01	COUPLING GUARD	1
4	BRG-23555	BEARING	4	36	HSS-0140	BOLT	2
5	HSS-0260	SETSCREW	8	37	WSH-0058	SPRING WASHER	2
6	WSH-0018	PLAIN WASHER	40	38	WSH-0012	PLAIN WASHER FORM A	6
7	NUT-0269	NUT	18	39	WDA-00025	CANNISTER FOR MANUALS	1
8	260030 03	SPROCKET 25 ID KEYWAY	2	40	194364 01	CANNISTER BRACKET	1
9	SCW-4530	GRUBSCREW	6	41	HSS-0145	BOLT	2
10	K0807032	KEY PARALLEL	1	42	NUT-0263	NYLOC NUT	2
11	CHN-01380	CHAIN 1/2" PITCH DUPLEX	2	43	CHN-0145	BLACK JAPPANED	0.17
11A	CHN-01300	JOINER (SPARES)		44	CLP-00103	R CLIP	1
12	MOTH04001	HYDRAULIC MOTOR	1	45	HSS-0086	SET SCREW	1
OR	MOTH03200	MOTOR CONVEYOR		46	WSH-0009	PLAIN WASHER FORM A	2
OR	MOTH02500	MOTOR CONVEYOR		47	NUT-0260	NYLOC NUT	1
12A	HMS-	SEAL KIT SPARES		48	191981 01	LOGO SHELBOURNE REYNOLDS	2
12B	K0807032	KEY (SPARES)		49	260058 01	TRANSFER-CUBICLEBEDDE	2
13	BLTA12290	HEX.HEAD BOLT	2	50	260059 02	TRANSFER - 200	2
14	WSH-0061	SPRING WASHER	4	51	260061 01	TRANSFER-SAFE DISTANC	2
15	WSH-0015	PLAIN WASHER	4	52	260062 01	TRANSFER-HAND ENTANGL	2
16	260025 02	CONVEYOR IDLER ROLLER	1	53	127075 16	50 HRS GREASE TRANF	5
17	260036 01	ADJUSTER/ BEARING MTG	2	54	260063 01	TRANSFER-DO NOT ENTER	1
18	NUT-0170	PLAIN NUT PLATED	4	55	190702 04	SLING POINT TRANSFER	4
19	260048 02	CONV.BELT-200 & 320	1	56	TNF-0011	TRANSFER BLOCK	1
19A	260048 03	JOINING PIN (SPARES)		57	260060 01	TRANSFER-STAY CLEAR	1
20	260040 01	SIDE DOOR (ADJUSTABLE)	2	58	800212 01	TRANSFER-CHECK CHAIN	1
21	NUT-0210	WINGNUT	4	59	PTF-00134	PLASTIC CAP INSERT	4
22	BRG-23545	BEARING	1	60	260067 01	BEARING SHIM	A/R
23	HSS-0250	SET SCREW	8	61	BRG-93600	SELF LUBE PROTECTOR CAP	4
24	MOTH38941	HYDRAULIC MOTOR	1				
24A	HMS-	SEAL KIT (SPARES)					
24B	K1008045	KEY (SPARES)					
25	260108 01	MOTOR SPROCKET	1				
26	WSH-1015	DOWTY WASHER 1/2"	6				
27	HMA-0067	ADAPTOR MALE/MALE	6				
28	HHAF08105	HYDRAULIC HOSE ASSY	1				
29	HHAF18305	HYDRAULIC HOSE ASSY	1				
30	HHAF24405	HYDRAULIC HOSE ASSY	1				
31	COU-0162	QUICK RELEASE COUPLING	2				
32	800198 02	TOP LINK PIN CATII	1				

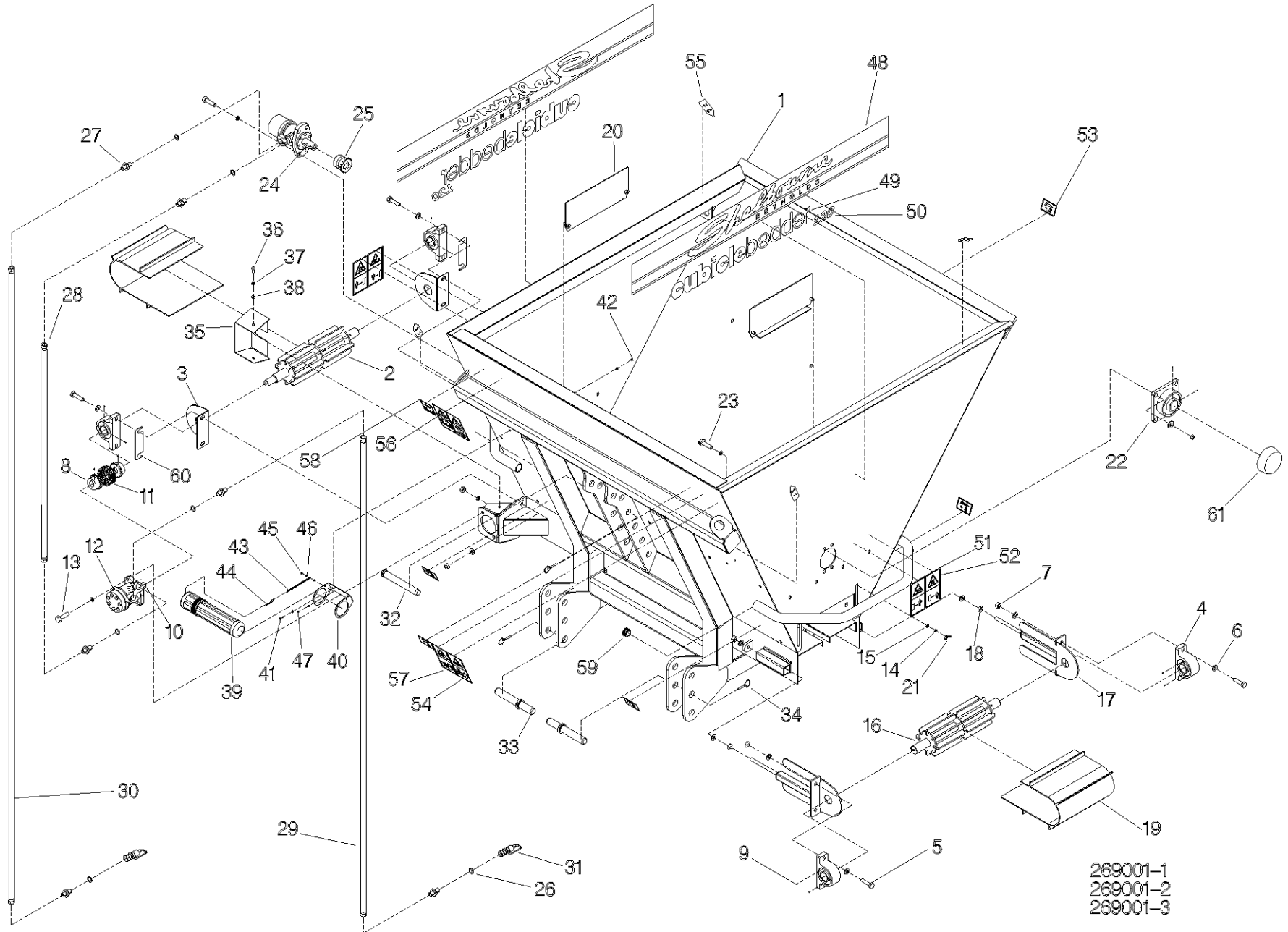
# Shelbourne Reynolds Engineering Limited



## Shelbourne Reynolds Engineering Limited

ASSY NUMBER: 269001 03				ASSY DESCRIPTION: TUB SUB ASSY 320			
ITEM	PART NO	DESCRIPTION	QTY	ITEM	PART NO	DESCRIPTION	QTY
1	260004 03	TUB W/A CB320	1	33	260069 01	LOWER LINK PIN CAT II	2
2	260025 01	CONVEYOR DRIVE ROLLER	1	34	20539001	LYNCH PIN	3
3	260035 01	GUARD PLATE	2	35	260054 01	COUPLING GUARD	1
4	BRG-23555	BEARING	4	36	HSS-0140	BOLT	2
5	HSS-0260	SETSCREW	8	37	WSH-0058	SPRING WASHER	2
6	WSH-0018	PLAIN WASHER	40	38	WSH-0012	PLAIN WASHER FORM A	6
7	NUT-0269	NUT	18	39	WDA-00025	CANNISTER FOR MANUALS	1
8	260030 03	SPROCKET 25 ID KEYWAY	2	40	194364 01	CANNISTER BRACKET	1
9	SCW-4530	GRUBSCREW	6	41	HSS-0145	BOLT	2
10	K0807032	KEY PARALLEL	1	42	NUT-0263	NYLOC NUT	2
11	CHN-01380	CHAIN 1/2" PITCH DUPLEX	2	43	CHN-0145	BLACK JAPANED	0.17
11A	CHN-01300	JOINER (SPARES)		44	CLP-00103	R CLIP	1
12	MOTH04001	HYDRAULIC MOTOR	1	45	HSS-0086	SET SCREW	1
OR	MOTH03200	MOTOR CONVEYOR		46	WSH-0009	PLAIN WASHER FORM A	2
OR	MOTH02500	MOTOR CONVEYOR		47	NUT-0260	NYLOC NUT	1
12A	HMS-	SEAL KIT SPARES		48	191981 01	LOGO SHELBOURNE REYNOLDS	2
12B	K0807032	KEY (SPARES)		49	260058 01	TRANSFER-CUBICLEBEDDE	2
13	BLTA12290	HEX.HEAD BOLT	2	50	260059 03	TRANSFER - 320	2
14	WSH-0061	SPRING WASHER	4	51	260061 01	TRANSFER-SAFE DISTANC	2
15	WSH-0015	PLAIN WASHER	4	52	260062 01	TRANSFER-HAND ENTANGL	2
16	260025 02	CONVEYOR IDLER ROLLER	1	53	127075 16	50 HRS GREASE TRANF	5
17	260036 01	ADJUSTER/ BEARING MTG	2	54	260063 01	TRANSFER-DO NOT ENTER	1
18	NUT-0170	PLAIN NUT PLATED	4	55	190702 04	SLING POINT TRANSFER	4
19	260048 02	CONV.BELT-200 & 320	1	56	TNF-0011	TRANSFER BLOCK	1
19A	260048 03	JOINING PIN (SPARES)		57	260060 01	TRANSFER-STAY CLEAR	1
20	260040 01	SIDE DOOR (ADJUSTABLE)	2	58	800212 01	TRANSFER-CHECK CHAIN	1
21	NUT-0210	WINGNUT	4	59	PTF-00134	PLASTIC CAP INSERT	4
22	BRG-23545	BEARING	1	60	260067 01	BEARING SHIM	A/R
23	HSS-0250	SET SCREW	8	61	BRG-93600	SELF LUBE PROTECTOR CAP	4
24	MOTH38941	HYDRAULIC MOTOR	1				
24A	HMS-	SEAL KIT (SPARES)					
24B	K1008045	KEY (SPARES)					
25	260108 01	MOTOR SPROCKET	1				
26	WSH-1015	DOWTY WASHER 1/2"	6				
27	HMA-0067	ADAPTOR MALE/MALE	6				
28	HHAF08105	HYDRAULIC HOSE ASSY	1				
29	HHAF18305	HYDRAULIC HOSE ASSY	1				
30	HHAF24405	HYDRAULIC HOSE ASSY	1				
31	COU-0162	QUICK RELEASE COUPLING	2				
32	800198 02	TOP LINK PIN CATII	1				

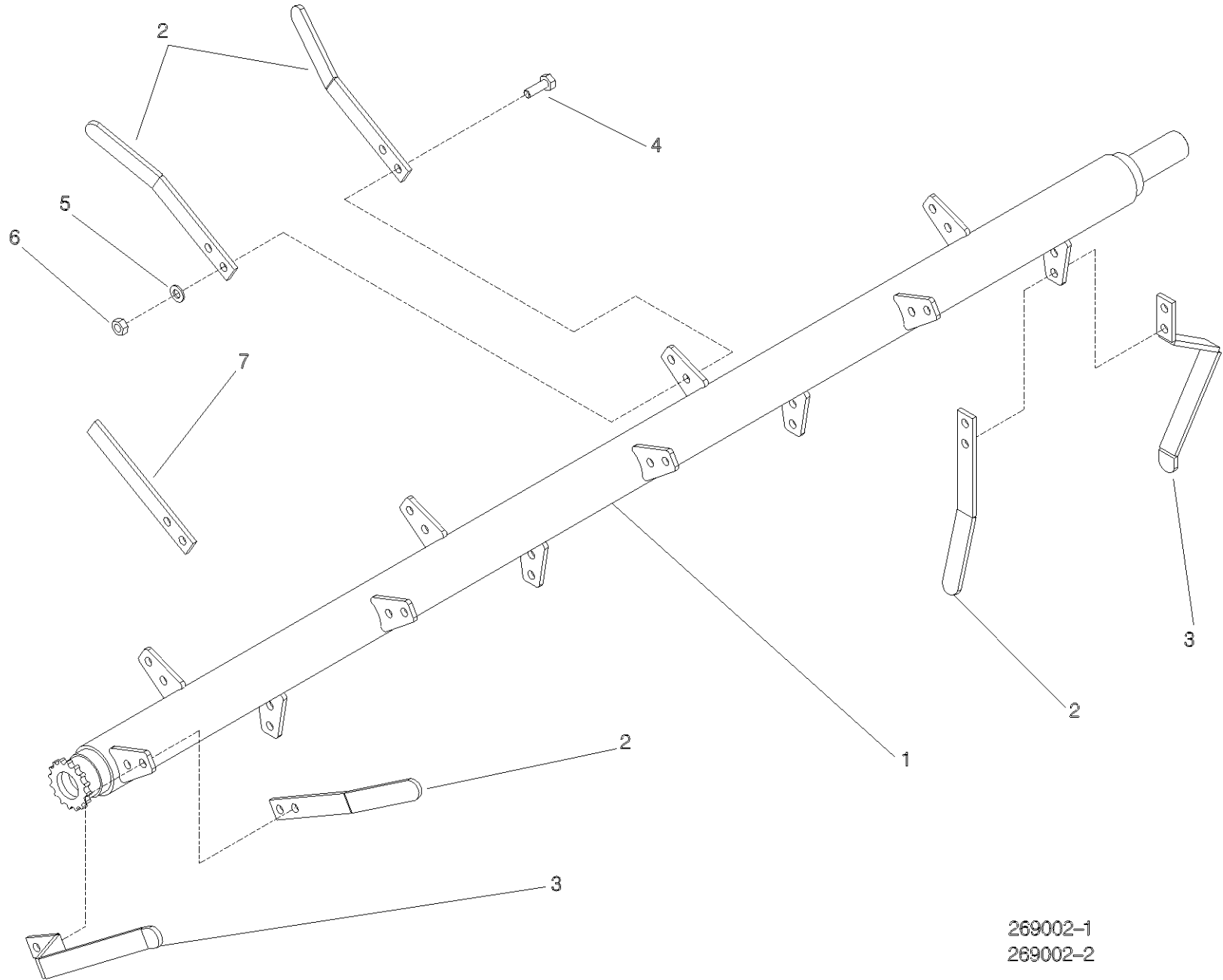
# Shelbourne Reynolds Engineering Limited



## Shelbourne Reynolds Engineering Limited

ASSY NUMBER: 269002 01				ASSY DESCRIPTION: AGITATOR ASSY 120			
ITEM	PART NO	DESCRIPTION	QTY	ITEM	PART NO	DESCRIPTION	QTY
1	260028 01	AGITATOR SHAFT W/A	1				
2	260045 01	TINE - AGITATOR STD	18				
3	260045 02	TINE - AGITATOR END	2				
4	HSS-0198	BOLT	20				
5	WSH-0015	PLAIN WASHER	20				
6	NUT-0265	NYLOC NUT	20				
7	260045 03	TINE - AGITATOR SHORT	10				

# Shelbourne Reynolds Engineering Limited



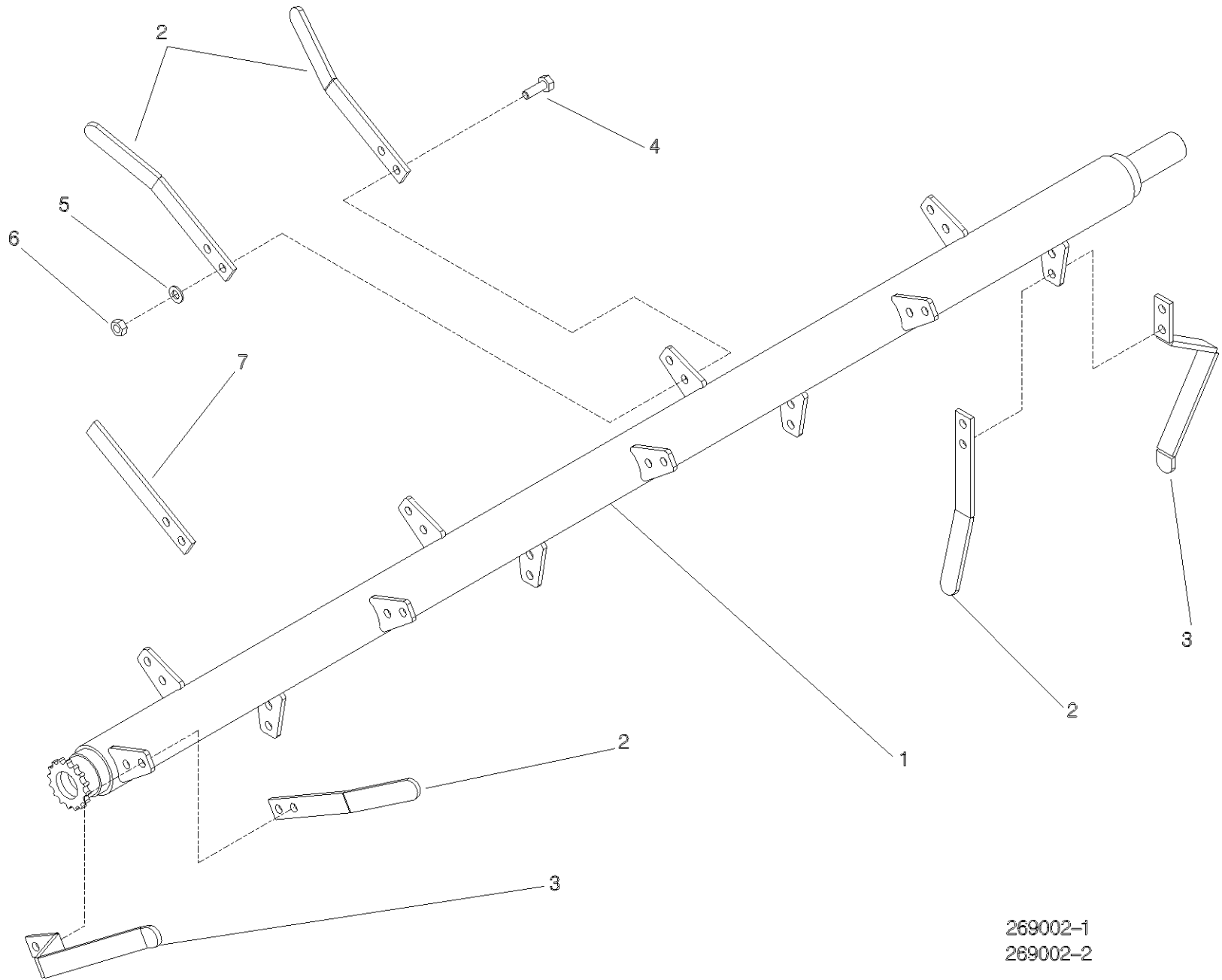
269002-1  
269002-2

## Shelbourne Reynolds Engineering Limited

ASSY NUMBER: 269002 02				ASSY DESCRIPTION: AGITATOR ASSY 200 & 320			
ITEM	PART NO	DESCRIPTION	QTY	ITEM	PART NO	DESCRIPTION	QTY
1	260028 02	AGITATOR SHAFT W/A	1				
2	260045 01	TINE - AGITATOR STD	22				
3	260045 02	TINE - AGITATOR END	2				
4	HSS-0198	BOLT	24				
5	WSH-0015	PLAIN WASHER	24				
6	NUT-0265	NYLOC NUT	24				
7	260045 03	TINE - AGITATOR SHORT	12				



# Shelbourne Reynolds Engineering Limited

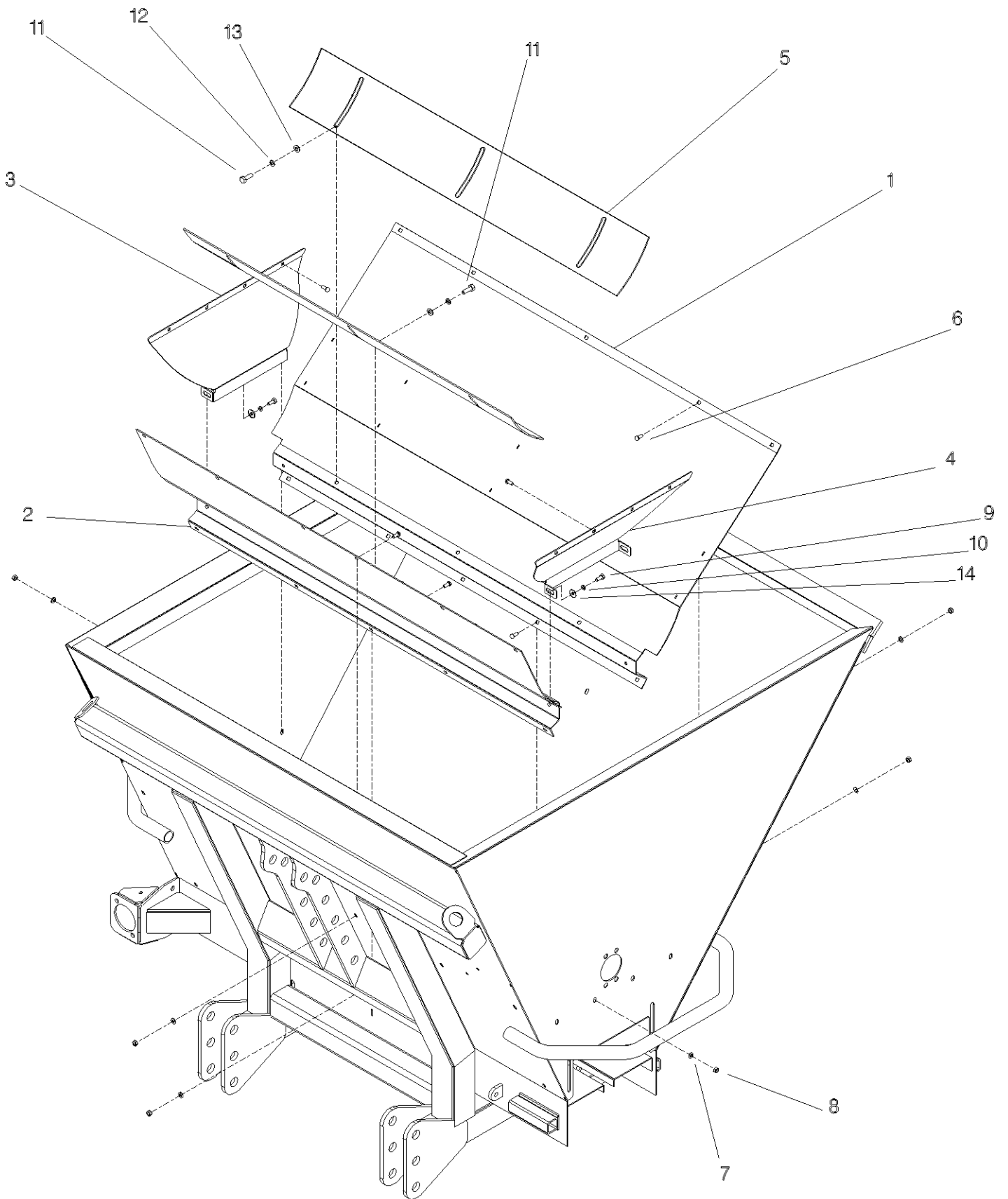


269002-1  
269002-2

## Shelbourne Reynolds Engineering Limited

ASSY NUMBER: 269003 01				ASSY DESCRIPTION: TUB SHEETS 120			
ITEM	PART NO	DESCRIPTION	QTY	ITEM	PART NO	DESCRIPTION	QTY
1	260031 01	FILLER PANEL FRNT 60"	1				
2	260032 01	FILLER PANEL REAR 60"	1				
3	260034 01	FILLER PANEL LH SIDE	1				
4	260034 02	FILLER PANEL RH SIDE	1				
5	260047 01	PANEL - INNER 60"	2				
6	BLT-4710	COACH BOLT	29				
7	WSH-0012	PLAIN WASHER FORM A	29				
8	NUT-0263	NYLOC NUT	29				
9	HSS-0140	BOLT	4				
10	WSH-0058	SPRING WASHER	4				
11	HSS-0198	BOLT	6				
12	WSH-0061	SPRING WASHER	6				
13	WSH-0015	PLAIN WASHER	6				
14	WSH-1038	PENNY WASHER	4				

# Shelbourne Reynolds Engineering Limited

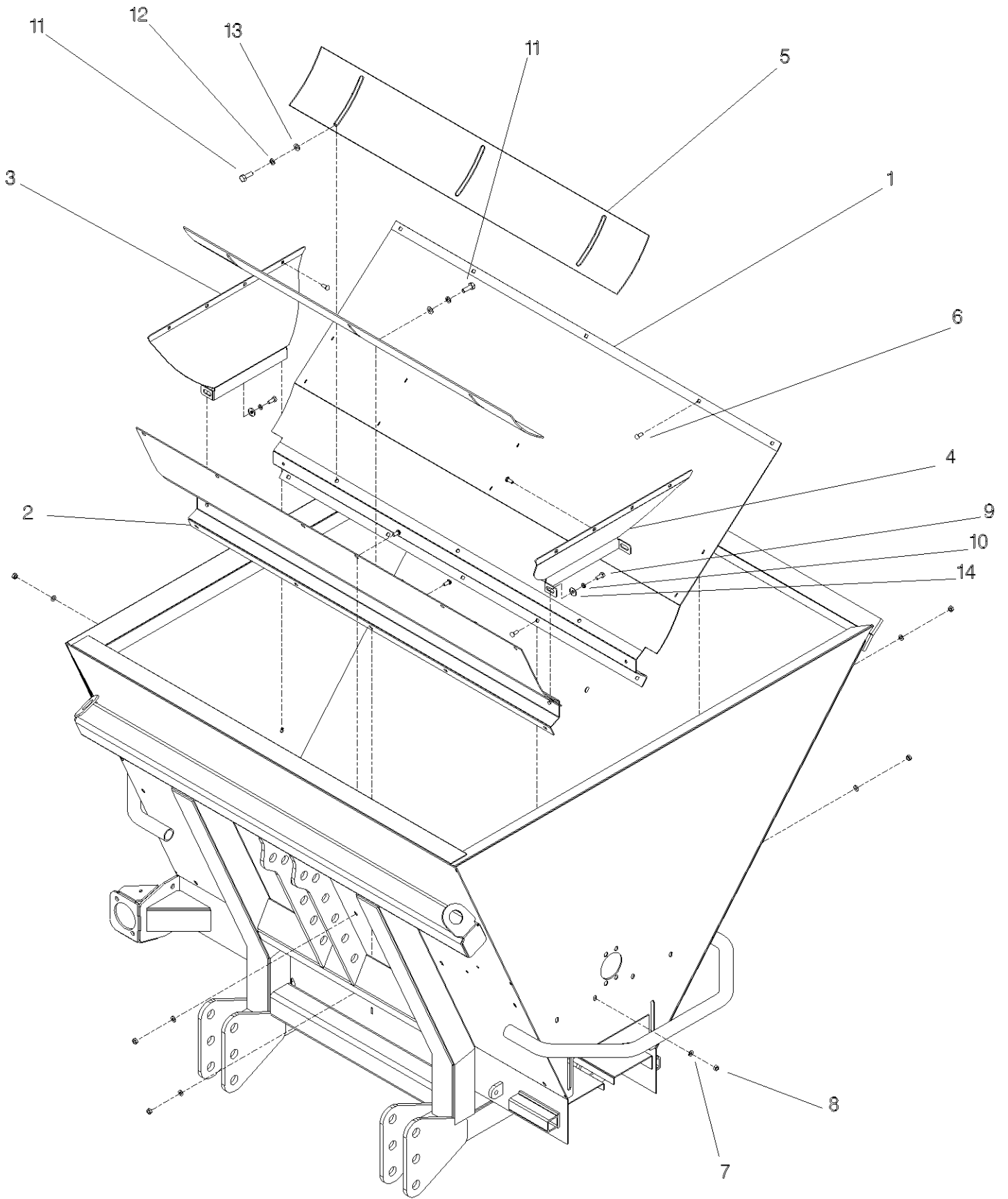


269003 01  
269003 02

## Shelbourne Reynolds Engineering Limited

SSY NUMBER: 269003 02				ASSY DESCRIPTION: TUB SHEETS 200 & 320			
ITEM	PART NO	DESCRIPTION	QTY	ITEM	PART NO	DESCRIPTION	QTY
1	260031 02	FILLER PANEL FRNT 72"	1				
2	260032 02	FILLER PANEL REAR 72"	1				
3	260034 01	FILLER PANEL LH SIDE	1				
4	260034 02	FILLER PANEL RH SIDE	1				
5	260047 02	PANEL - INNER 72"	2				
6	BLT-4710	COACH BOLT	33				
7	WSH-0012	PLAIN WASHER FORM A	33				
8	NUT-0263	NYLOC NUT	33				
9	HSS-0140	BOLT	4				
10	WSH-0058	SPRING WASHER	4				
11	HSS-0198	BOLT	6				
12	WSH-0061	SPRING WASHER	6				
13	WSH-0015	PLAIN WASHER	6				
14	WSH-1038	PENNY WASHER	4				

# Shelbourne Reynolds Engineering Limited

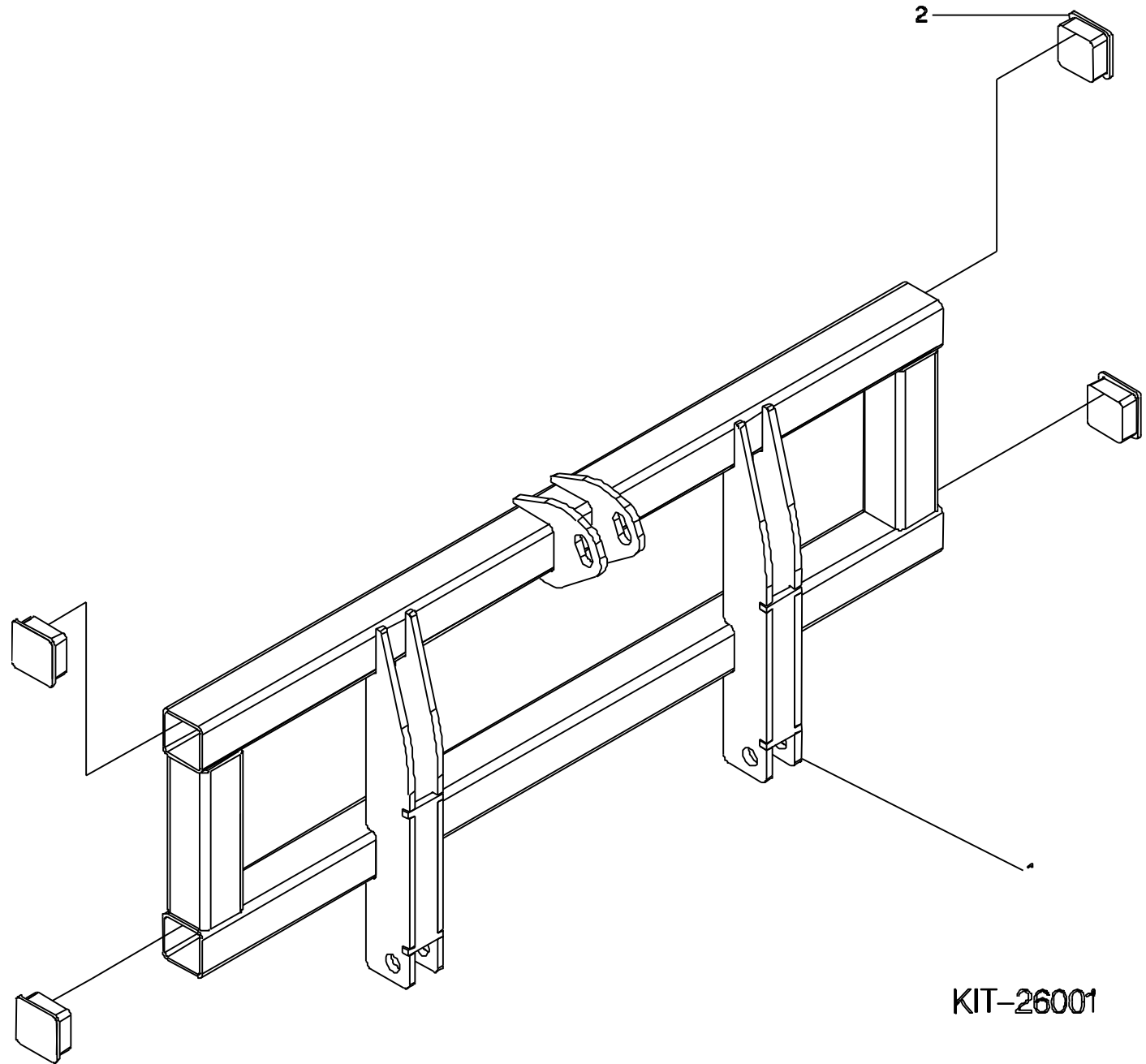


269003 01  
269003 02

# Shelbourne Reynolds Engineering Limited

ASSY NUMBER: KIT-26001				ASSY DESCRIPTION: HANDLER FRAME KIT			
ITEM	PART NO	DESCRIPTION	QTY	ITEM	PART NO	DESCRIPTION	QTY
1	260041 01	TELEHANDLER FRAME W/A	1				
2	21709004	END CAP 80 X 80	4				

# Shelbourne Reynolds Engineering Limited



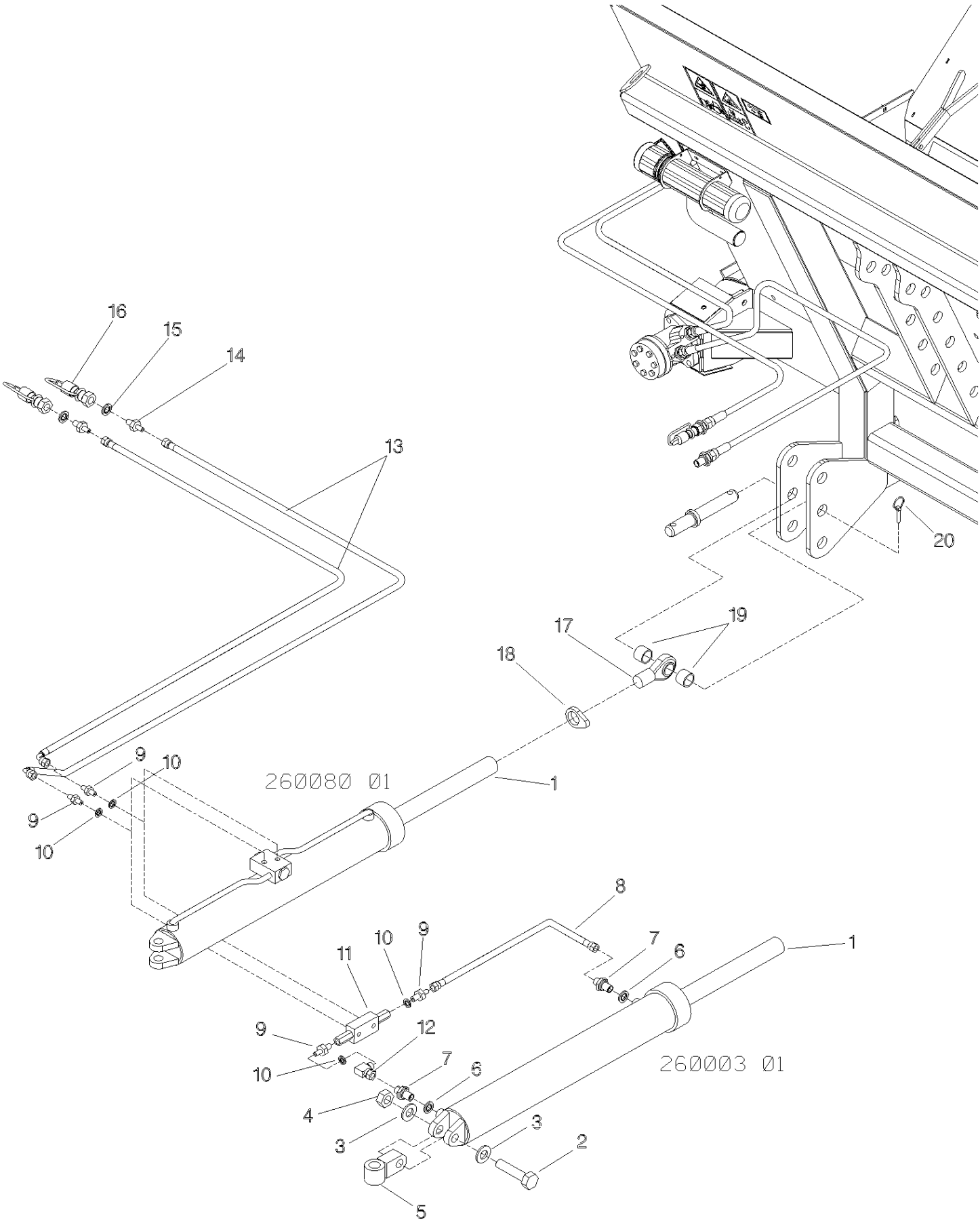
KIT-26001

## Shelbourne Reynolds Engineering Limited

ASSY NUMBER: KIT-26002				ASSY DESCRIPTION: HYD.TOP LINK CYLIND.KIT			
ITEM	PART NO	DESCRIPTION	QTY	ITEM	PART NO	DESCRIPTION	QTY
1	260080 01	TOP LINK CYLINDER (WELDED PO BLOCK & PIPES)	1				
OR	260003 01	TOP LINK CYLINDER (USES LOOSE PO BLOCK)	1				
1A	RMSK00300	SEAL KIT (SPARES)					
2	BLT-2370	BOLT	1				
3	WSH-0030	PLAIN WASHER	2				
4	NUTA02200	NYLOC NUT	1				
5	260002 03	CLEVIS W/A (29mm ID)	1				
6	WSH-1010	BONDED SEAL (ITEM 1 - 260003 01 ONLY)	2				
7	HMA-0057	ADAPTOR (ITEM 1 - 260003 01 ONLY)	2				
8	HHCE03705	HOSE (ITEM 1 - 260003 01 ONLY)	1				
9	FIT-0025	1/4"BSP X 3/8"BSP (ITEM 1 - 260080 01 ONLY)	2				
OR	WSH-1005	DOWTY WASHER 1/4" (ITEM 1 - 260003 01 ONLY)	4				
13	HHBE10005	HYDRAULIC HOSE ASSY (ITEM 1 - 260080 01 ONLY)	2				
OR	HMA-0065	ADAPTOR MALE/MALE (ITEM 1 - 260003 01 ONLY)	4				
11	HVB-27000	PILOT CHECK VALVE (ITEM 1 - 260003 01 ONLY)	1				
12	HAKAA0505	ELBOW ADAPTOR (ITEM 1 - 260003 01 ONLY)	1				
13	HHBE10005	HOSE	2				
14	HMA-0065	ADAPTOR	2				
15	WSH-1015	BONDED SEAL	2				
16	COU-0162	QRC c/w COVER	2				
17	ADL-15550	THREADED TOP LINK END	1				
18	ADL-05510	LOCKING COLLAR	1				
19	240359 01	TOP LINK SPACER	2				
20	20539001	LYNCH PIN	2				



Shelbourne Reynolds Engineering Limited

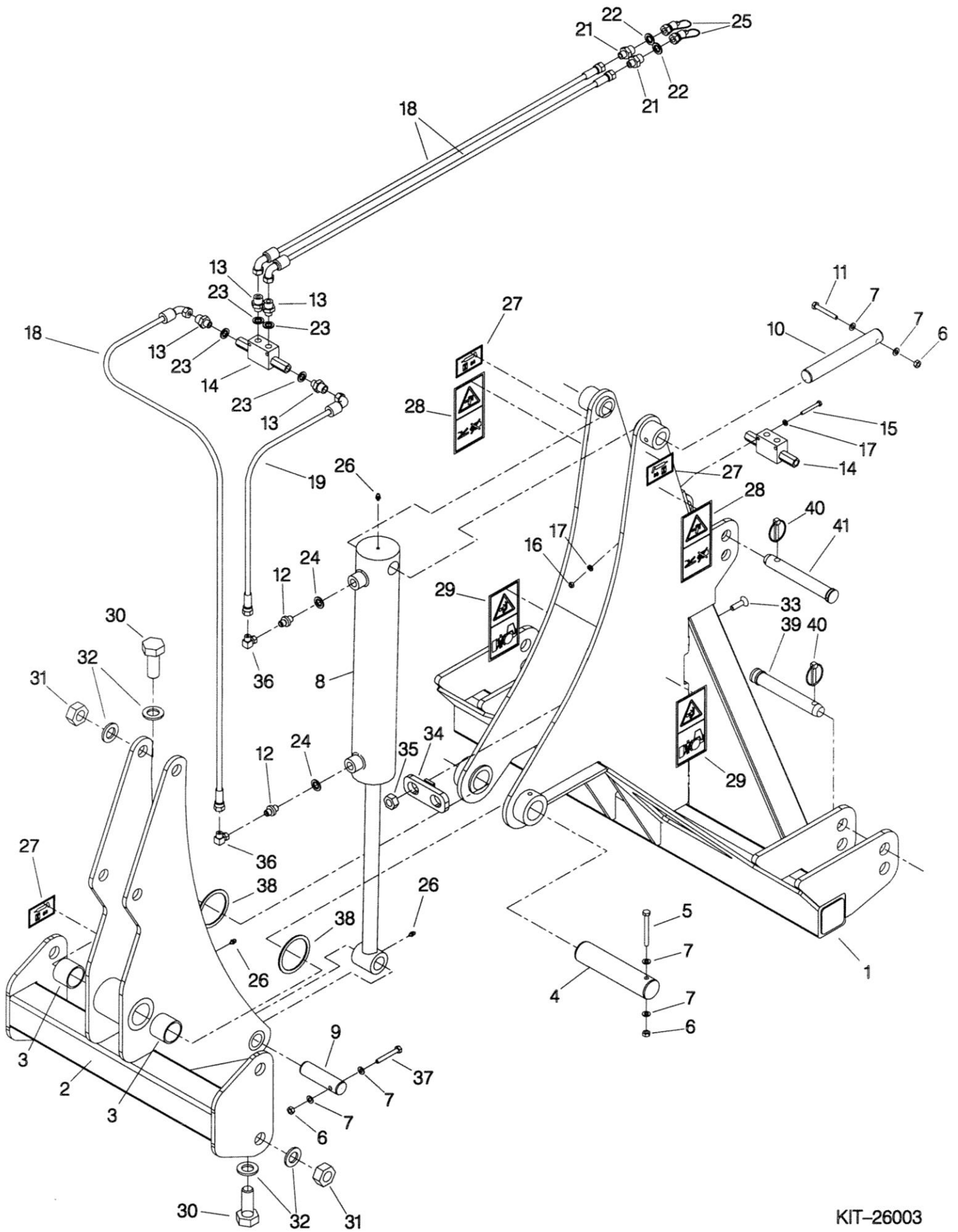


KIT-26002

## Shelbourne Reynolds Engineering Limited

ASSY NUMBER: KIT-26003				ASSY DESCRIPTION: A-FRAME KIT			
ITEM	PART NO	DESCRIPTION	QTY	ITEM	PART NO	DESCRIPTION	QTY
1	260093 01	MAIN A-FRAME W/A	1	40	20539001	LYNCH PIN	3
2	260085 01	A-FRAME LINKAGE W/A	1	41	800198 03	PIN CAT 2 TOP LINK PIN	1
3	BSHA04562	BUSH	2				
4	260095 01	PIN	1				
5	BLTA08500	BOLT	1				
6	NUT-0263	NUT	3				
7	WSH-0012	WASHER	6				
8	RAM-0011	HYDRAULIC CYLINER	1				
8A		SEAL KIT (SPARES)					
9	260096 01	PIN	1				
10	260096 02	PIN	1				
11	BLTA08380	BOLT	1				
12	HMA-0057	ADAPTER	2				
13	FIT-0025	ADAPTER	4				
14	HVB-27000	PILOT CHECK VALVE	1				
15	BLTA06320	BOLT	2				
16	NUT-0260	NUT	2				
17	WSH-0009	WASHER	4				
18	HHBE10005	HOSE	3				
19	HHBE05505	HOSE	1				
20							
21	HMA-0065	ADAPTER	2				
22	WSH-1015	BONDED SEAL	2				
23	WSH-1005	BONDED SEAL	4				
24	WSH-1010	BONDED SEAL	2				
25	COU-0162	QRC C/W COVER	2				
26	NIP-00600	GREASE NIPPLE	3				
27	127075 16	TRANSFER	3				
28	800215 01	TRANSFER	2				
29	260060 01	TRANSFER	2				
30	HSSA24380	BOLT	8				
31	NUT-0275	NUT	8				
32	WSH-0036	WASHER	16				
33	SCW-1965	SCREW	2				
34	260098 01	HITCH LATCH PLATE	1				
35	20901019	HITCH CAM	2				
36	HALAA0505	ELBOWMALE/FEMALE	2				
37	SCW-0150	CAP HEAD SCREW	1				
38	590652 02	SHIMS	2				
39	21728223	PIM	2				

# Shelbourne Reynolds Engineering Limited



KIT-26003